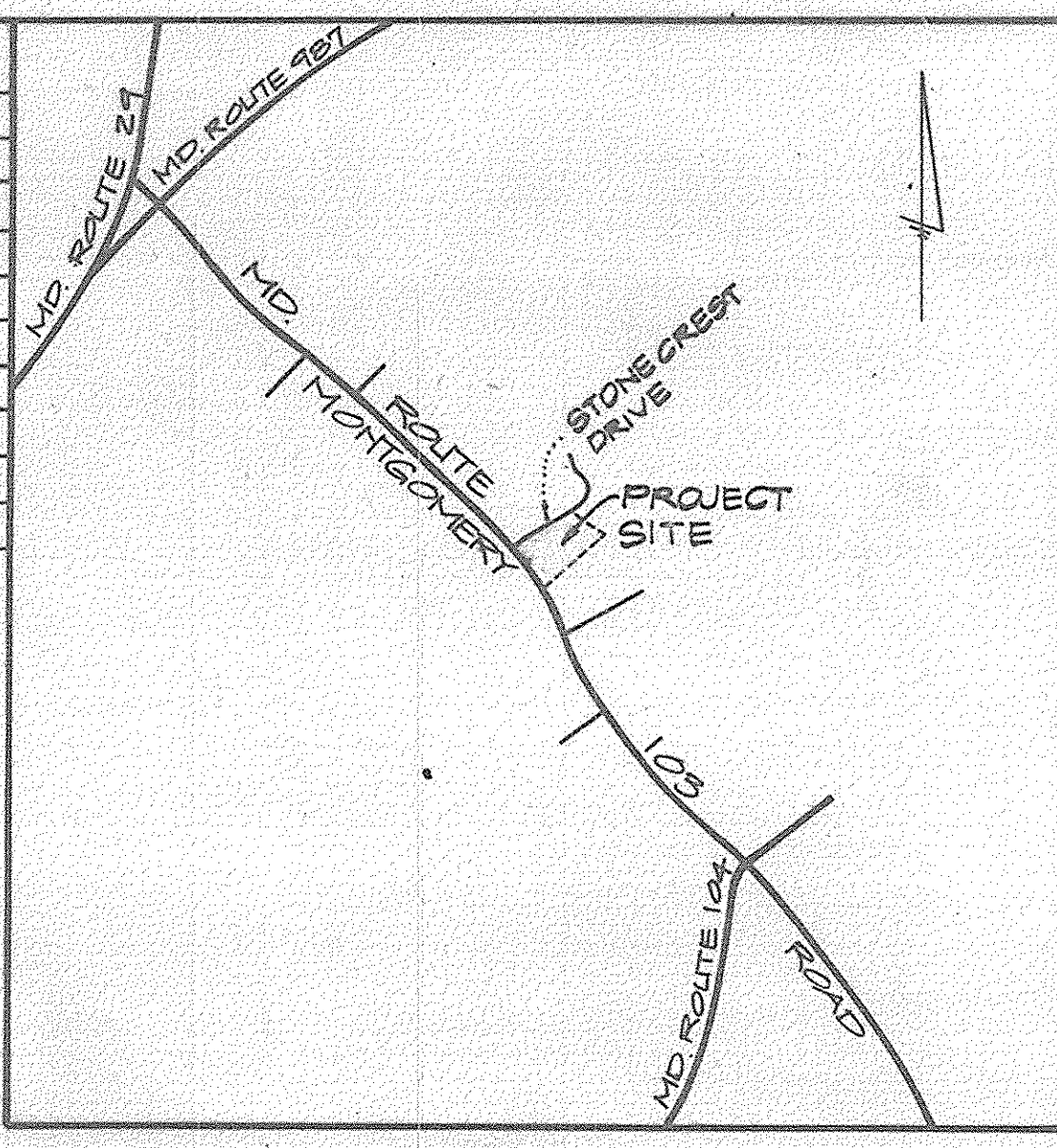


COORDINATE TABLE		
NO.	NORTH	EAST
1	514465.01	854706.09
2	514472.05	854805.61
3	514588.18	854974.78
4	514680.32	855222.67
5	514741.42	855295.37
6	514866.71	855404.01
7	514965.78	855751.04
8	515064.97	855111.40
9	514425.73	854797.77



VICINITY MAP
SCALE: 1"=2000'

SITE ANALYSIS

- ZONING: R-20 (PER AUGUST 2, 1985 COMPREHENSIVE ZONING PLAN)
- NO. OF PROPOSED LOTS: 17 LOTS PLUS 2 PARCELS TO BE DEDICATED FOR STORM WATER MANAGEMENT & OPEN SPACE
- PUBLIC WATER AND PUBLIC SEWER TO BE UTILIZED.
- TOPOGRAPHY SHOWN IS BASED ON ACTUAL FIELD SURVEY PERFORMED JULY, 1986. SURVEYS ARE BASED ON MARYLAND STATE GRID DATUM. HOWARD COUNTY CONTROL: *3043001 N 516540.548 E 853656.506 *3043002 N 519531.102 E 852655.010
- CONTOUR INTERVAL AT 1 FOOT
- OPEN SPACE FEE WILL BE PAID FOR LOTS NO. 9, 10 & 11 @ \$200.00/EACH = \$700.00.
- TABULATION TABLE

LOT SIZE AND MANDATORY OPEN SPACE PROVISIONS: RE: SECTION 100D.2 (R-20 DISTRICT) ZONING REGULATIONS.

LOT SIZE (SQ. FT.)	NO. OF LOTS	AREA OF LOTS (AC)	MANDATORY OPEN SPACE PROVISIONS IN PERCENT	AREA OF OPEN SPACE IN ACRES
20,000 OR LARGER	3	1.435	SUBDIVISION REGULATIONS	OPEN SPACE FEE TO BE PAID
18,000-19,999	3	1.2451	10%	0.125
16,000-17,999	6	2.994	20%	0.599
14,000-15,999	3	1.047	30%	0.314
TOTALS	17	6.785		1.038

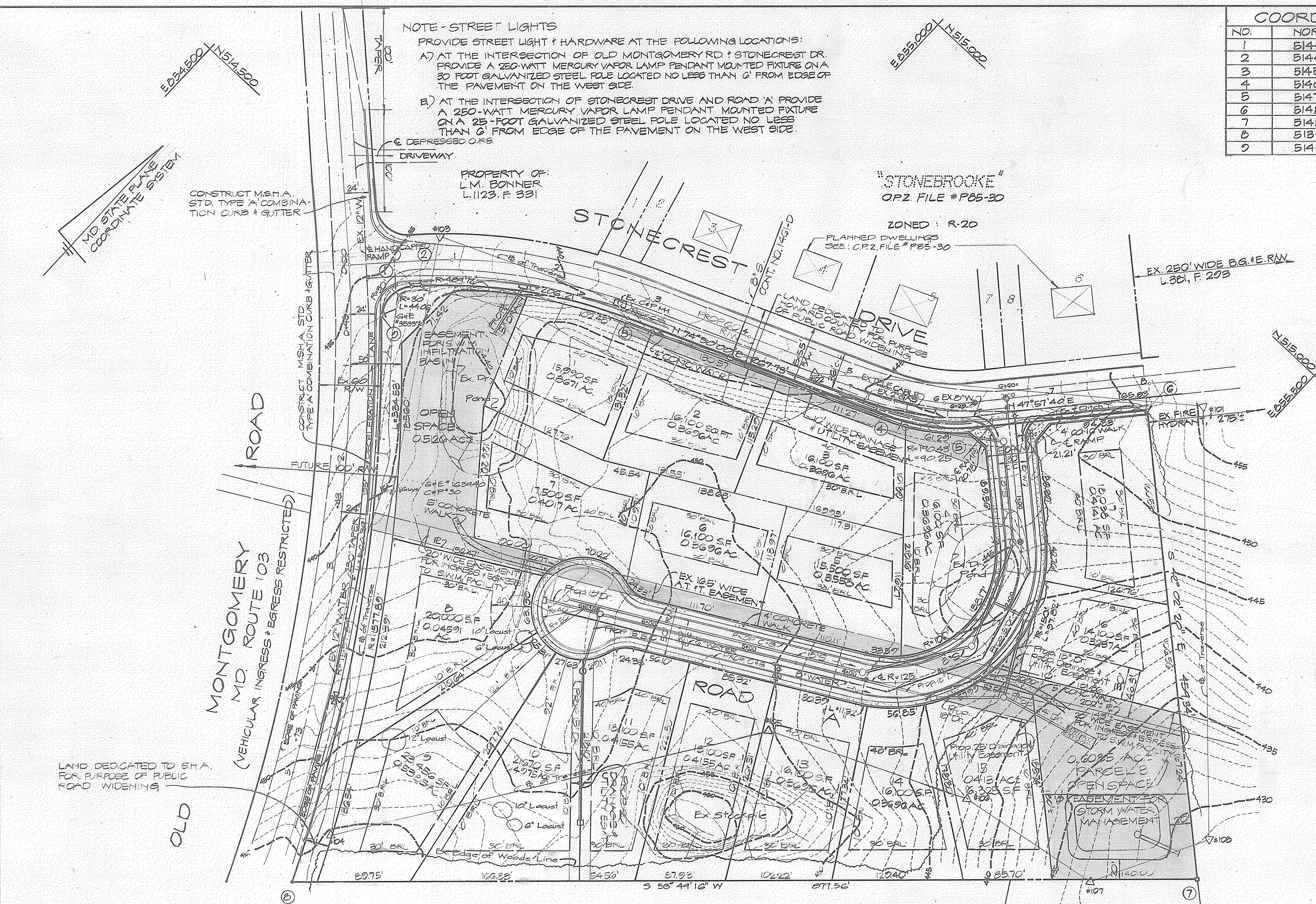
- TOTAL OPEN SPACE PROVIDED 1.104
- TOTAL AREA OF PARCEL 747 = 9.20 AC
- TOTAL AREA OF VEHICULAR R/W = 1.56 AC
- SEDIMENT AND EROSION CONTROL MEASURES WILL BE PROVIDED WITH THE SUBMISSION OF SITE DEVELOPMENT & ROAD CONSTRUCTION PLANS.
- SEE OFFICE OF PLANNING AND ZONING FILE NO. 5-86-53.
- SEE LIBER 1087 FOLIO 482.
- LANDSCAPING MEASURES WILL BE PROVIDED WITH THE SUBMISSION OF A LANDSCAPE PLAN.

PRELIMINARY PLAN FOR STONEBROOKE TWO (FORMERLY ELMER D. JOHNSON PROPERTY)

2ND ELECTION DISTRICT HOWARD COUNTY, MD
TAX MAP 31 PARCEL 747
SCALE: 1" = 50' DATE: SEPT. 15, 1986
DRAWN BY: E.A.B. CHECKED BY: D.E.H.

REV. DATE: FEB. 14, 1987 SHEET 1 OF 1

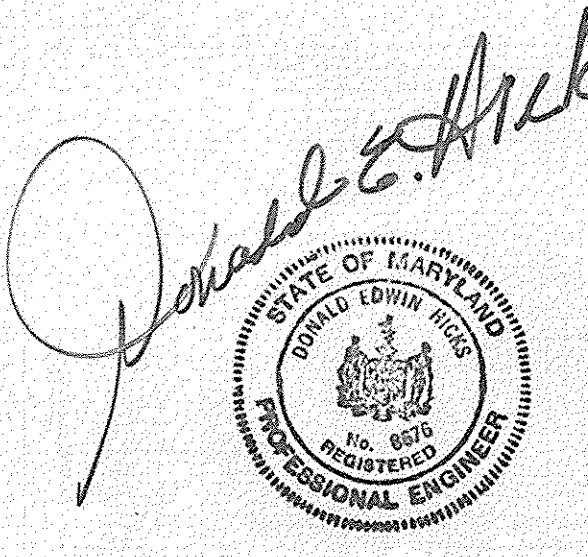
NOTE - STREET LIGHTS
PROVIDE STREET LIGHT & HARDWARE AT THE FOLLOWING LOCATIONS:
A) AT THE INTERSECTION OF OLD MONTGOMERY RD & STONECREST DR. PROVIDE A 250-WATT MERCURY VAPOR LAMP PENDANT MOUNTED FIXTURE ON A 30 FOOT GALVANIZED STEEL POLE LOCATED NO LESS THAN 6' FROM EDGE OF THE PAVEMENT ON THE WEST SIDE.
B) AT THE INTERSECTION OF STONECREST DRIVE AND ROAD 'A' PROVIDE A 250-WATT MERCURY VAPOR LAMP PENDANT MOUNTED FIXTURE ON A 25-FOOT GALVANIZED STEEL POLE LOCATED NO LESS THAN 6' FROM EDGE OF THE PAVEMENT ON THE WEST SIDE.



PROPERTY OF: L.M. BONNER L.1123, F. 391
PROPERTY OF: H.S. CELGIN L.724, F. 306
PROPERTY OF: WILLIAM O. FILBERT L.279, F. 502

TENTATIVELY APPROVED ON **FEB. 6, 1987**
DATE
OFFICE OF PLANNING AND ZONING OF
HOWARD COUNTY
Thomas J. Haney 2-17-87
PLANNING DIRECTOR DATE

HICKS ENGINEERING COMPANY, INC.
200 EAST JOPPA ROAD - SUITE 402
TOWSON, MARYLAND 21204
(301) 494-0001



OWNER / DEVELOPER
ELMER DONALD JOHNSON
4442 STONECREST DRIVE
ELLCOTT CITY, MD. 21043
TELEPHONE: (301) 465-5624