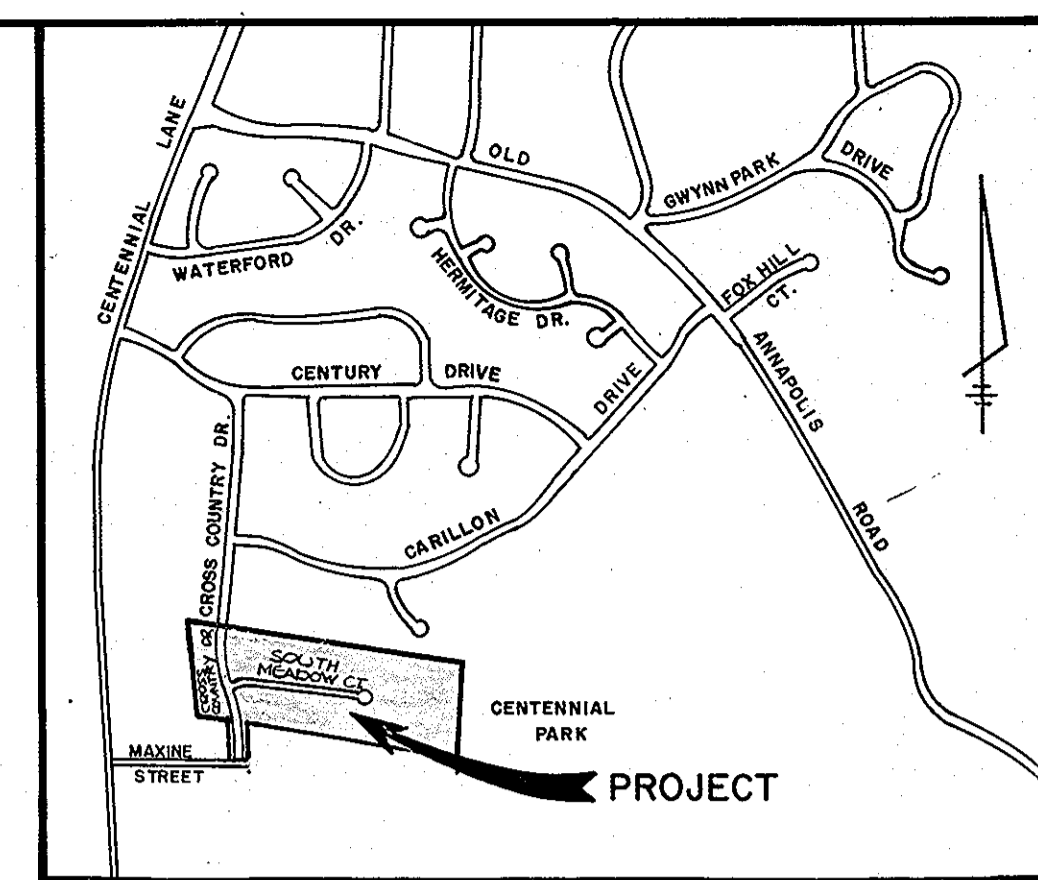
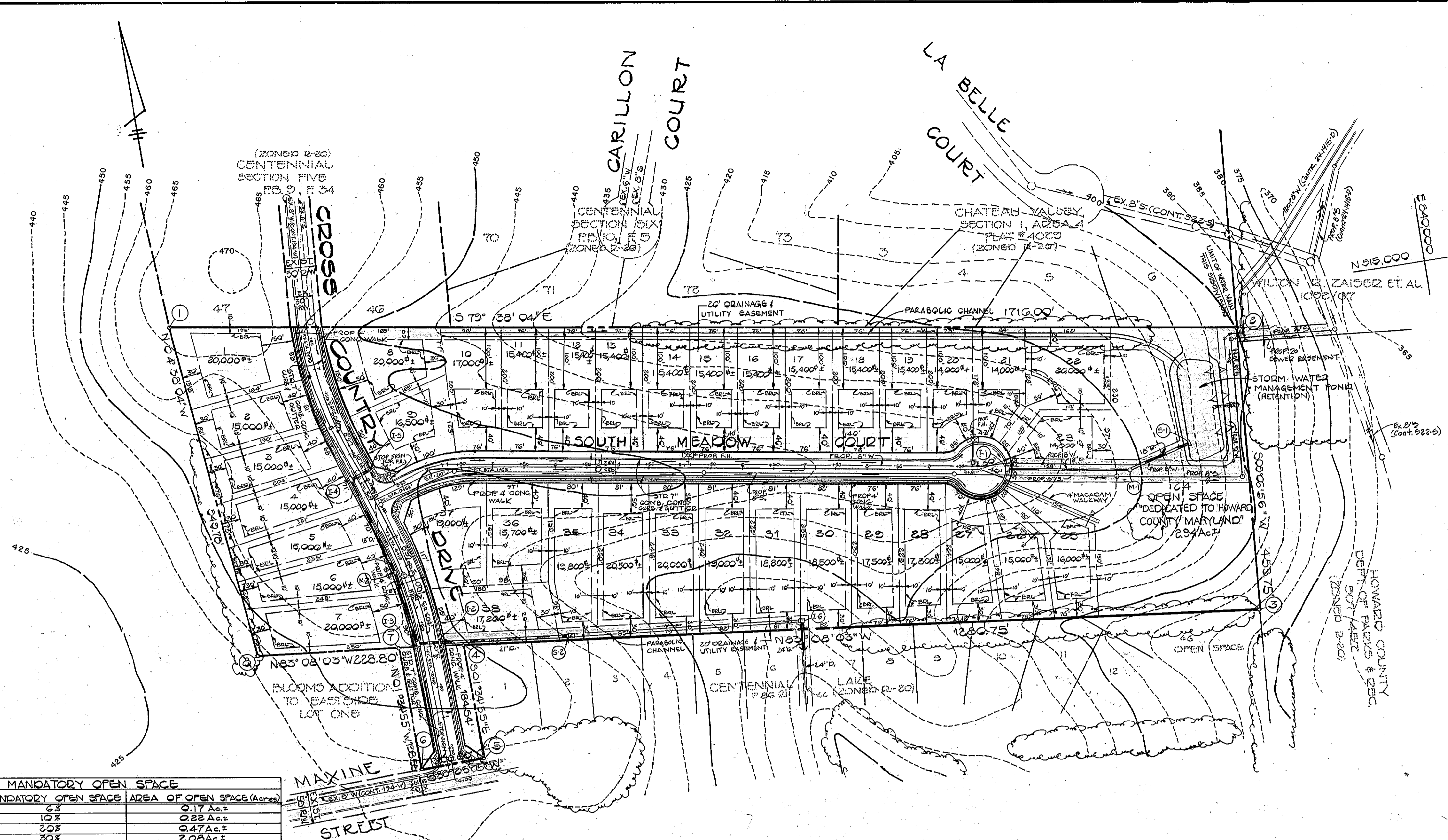


COORDINATES		
NO.	NORTH	EAST
1	85227.27	83804.75
2	84219.21	83970.28
3	84488.28	83968.22
4	84641.39	83826.65
5	84456.32	83831.75
6	84454.16	83829.79
7	84652.63	83826.31
8	84679.99	83809.15



VICINITY MAP
SCALE: 1"=1200'

- GENERAL NOTES**
- 1) PROPERTY ZONED R-20 AS PER 8-2-85 COMPREHENSIVE ZONING PLAN.
 - 2) TOTAL AREA OF LOTS - 14.20 Ac.±
 - 3) TOTAL AREA OF ROADS - 2.00 Ac.±
 - 4) TOTAL AREA OF OPEN SPACE - 2.24 Ac.±
 - 5) TOTAL AREA OF PROPERTY - 19.14 Ac.±
 - 6) TOTAL NUMBER OF BUILDABLE LOTS - 37
 - 7) PUBLIC WATER AND SEWER SYSTEMS WILL BE USED.
 - 8) B.R.L. DENOTES BUILDING RESTRICTION LINE.
 - 9) FOR FLAG OR PIPE STEM LOTS, REFUSE COLLECTION, SNOW REMOVAL AND ROAD MAINTENANCE TO BE PROVIDED AT THE JUNCTION OF FLAG OR PIPE STEM AND THE ROAD D/W AND NOT ONTO THE FLAG OR PIPE STEM DRIVEWAY.
 - 10) AN INFILTRATION POND WILL BE USED AS A METHOD OF STORM WATER RETENTION ON LOT 24. THIS METHOD OF RETENTION IS RECOMMENDED BY HERBST & ASSOCIATES GEOTECHNICAL ENGINEERS.

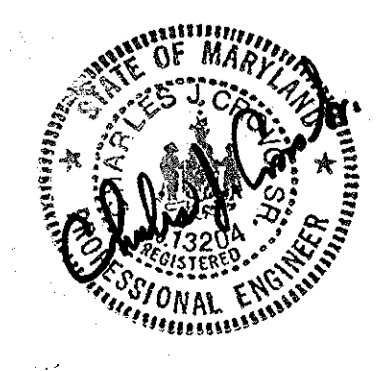
LOT SIZE AND MANDATORY OPEN SPACE				
LOT SIZE(SQ. FT.)	NO. OF LOTS	AREA OF LOTS	MANDATORY OPEN SPACE	AREA OF OPEN SPACE (Acres)
20,000 OR GREATER	6	2.77 Ac.±	6%	0.17 Ac.±
18,000 - 19,999	5	2.18 Ac.±	10%	0.22 Ac.±
16,000 - 17,999	6	2.35 Ac.±	20%	0.47 Ac.±
14,000 - 15,999	20	6.92 Ac.±	30%	2.08 Ac.±
TOTALS	37	14.20 Ac.±	---	2.94 Ac.±

1) TOTAL OPEN SPACE PROVIDED = 2.24 Ac.±

DENSITY TABULATION								
OPEN SPACE REQUIRED	OPEN SPACE PROVIDED	GROSS AREA	FLOOD PLAIN STEEP SLOPES	NET AREA	NO. OF DWELLING UNITS ALLOWED	FLOOD PLAIN LOT ADJUSTMENT	TOTAL NO. OF DWELLING UNITS PROPOSED	DENSITY PER ACRE
2.24 Ac.±	2.24 Ac.±	19.14 Ac.±	----	19.14 Ac.±	38.28	----	37	1.93

FISHER, COLLINS, AND CARTER, INC.
CIVIL ENGINEERS AND LAND SURVEYORS
8388 COURT AVENUE
ELICOTT CITY, MARYLAND 21043

OWNED & DEVELOPED
CHATEAU BUILDERS
8100 WOODBURN GLEN COURT
ELICOTT CITY, MARYLAND 21043



TENTATIVELY APPROVED ON Feb. 18, 1986
DATE
OFFICE OF PLANNING AND ZONING OF
HOWARD COUNTY
James L. Harris
PLANNING DIRECTOR
DATE 2-25-86

PRELIMINARY PLAN
THE WILLOWS
SECTION 2
TAX MAP #30 PART OF PARCEL 213
2ND ELECTION DISTRICT HOWARD COUNTY, MARYLAND
SCALE: 1"=100' NOVEMBER 11, 1985
S 86-12