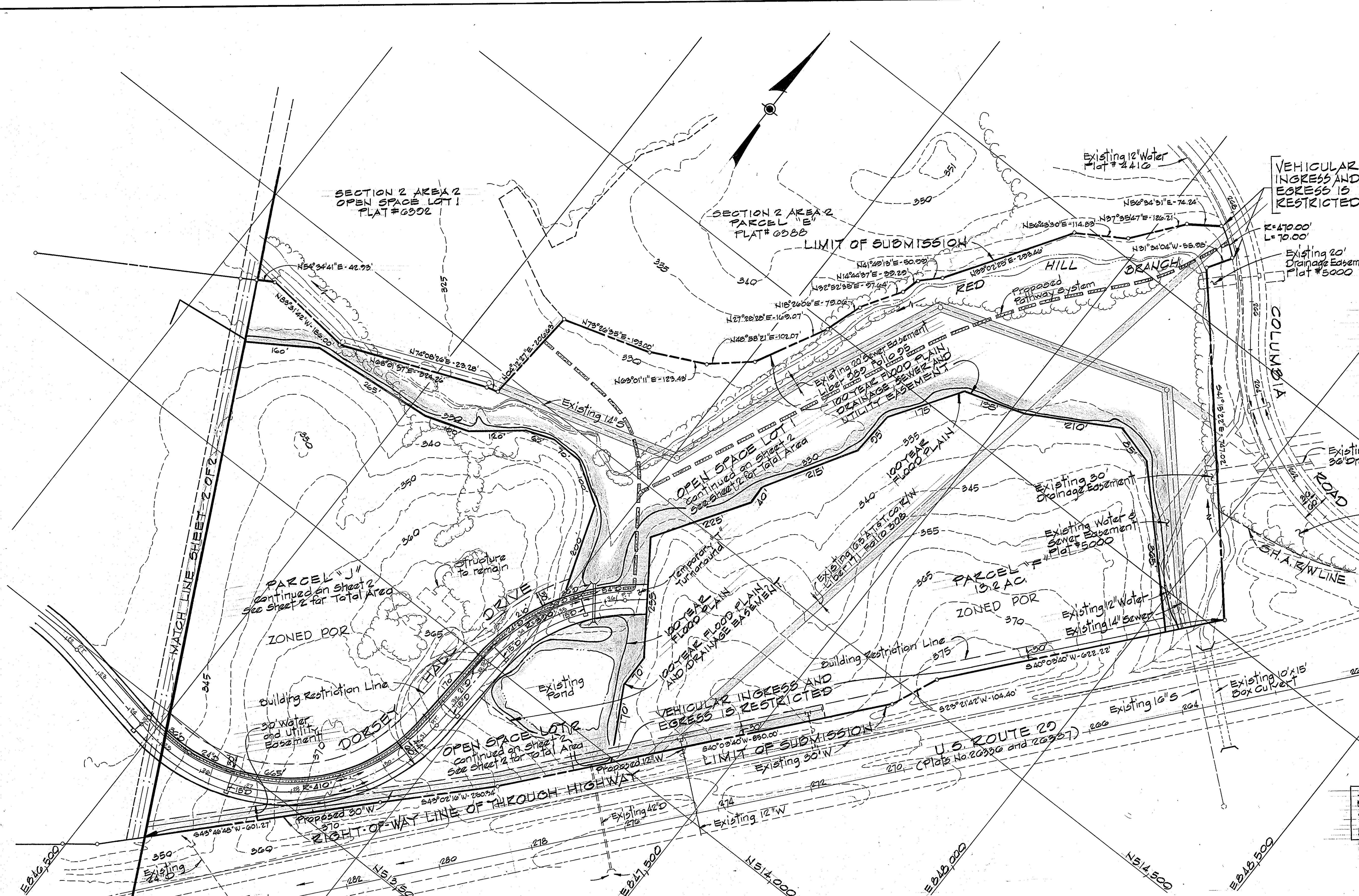


VICINITY MAP
Scale: 1" = 2,000'

LEGEND

- Proposed Headwalls
- Proposed Inlets
- Proposed Manholes
- Rip Rap (20' Minimum)
- Proposed Pipes
- Proposed Concrete Sidewalks
- Major Open Space Pathway System to be constructed by Others
- 100 Year Flood Plain Elevation 330.5



TENTATIVELY APPROVED ON **JAN 27 1986**

OFFICE OF PLANNING AND ZONING OF
HOWARD COUNTY
[Signature]
PLANNING DIRECTOR DATE

SPECIAL NOTE:
POR districts shown hereon were approved under Planning Board Case #184 in accordance with Zoning Regulation 113-E-3.

SPECIAL NOTES

1. 100 year flood plain and drainage easements to be dedicated to the county.
2. The 100 year flood level shown hereon is based upon information provided by Century Engineering Inc. see Little Patuxent River Hydrology Model sheets 220-41, 220-42, 230-42, 231-41 and 231-42.

GENERAL NOTES

1. This plan subject to V.P. 78-80, see office of Planning and Zoning file 578-22 and P84-27.
2. Existing zoning is RA-15, POR and SC.
3. Topography taken from aerial topo, prepared by Aero Service Corporation - 1968.
4. Public water and sewer systems to be made available and utilized.
5. All building restriction lines shall be in accordance with Howard County Zoning Regulations.
6. Erosion and sediment control to be shown on subsequent Final Plans, grading plans and Site Development Plans.

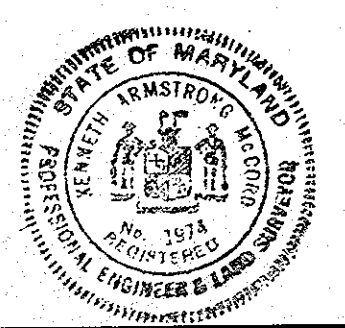
TABULATION OF LAND USE

NO.	DATE	DESCRIPTION OF REVISION
1	2/19/86	As per Planning, D.P.W. and S.C.S. Cammen's
2		
3		
4		
5		
6		
7		

Category	Area (Ac±)	Total
1. Total Number of Lots and Parcels		7
Residential Parcels	1	
POR Parcels	3	
SC Parcels	1	
Open Space Lots	2	
2. Total Area		117.0 Ac±
Residential Parcel	23.3 Ac±	
POR Parcels	46.3 Ac±	
SC Parcel	10.0 Ac±	
Open Space Lots	23.4 Ac±	
Roadway	13.4 Ac±	
Public Utility	0.6 Ac±	

NOTE:
This plan subject to V.P. 86-36

WHITMAN, REQUARDT AND ASSOCIATES
ENGINEERS
2315 ST. PAUL STREET
BALTIMORE, MARYLAND 21218
[Signature]
KENNETH A. McCORD P.E. NO. 1974



DORSEY HALL
SECTION 2 AREA 3
PRELIMINARY PLAN
2ND ELECTION DISTRICT OF HOWARD COUNTY, MD
OWNER AND DEVELOPER
COLUMBIA INDUSTRIAL DEVELOPMENT CORP
COLUMBIA, MARYLAND
Date: 12/4/85 SHEET 1 OF 2 Scale: 1" = 100'

