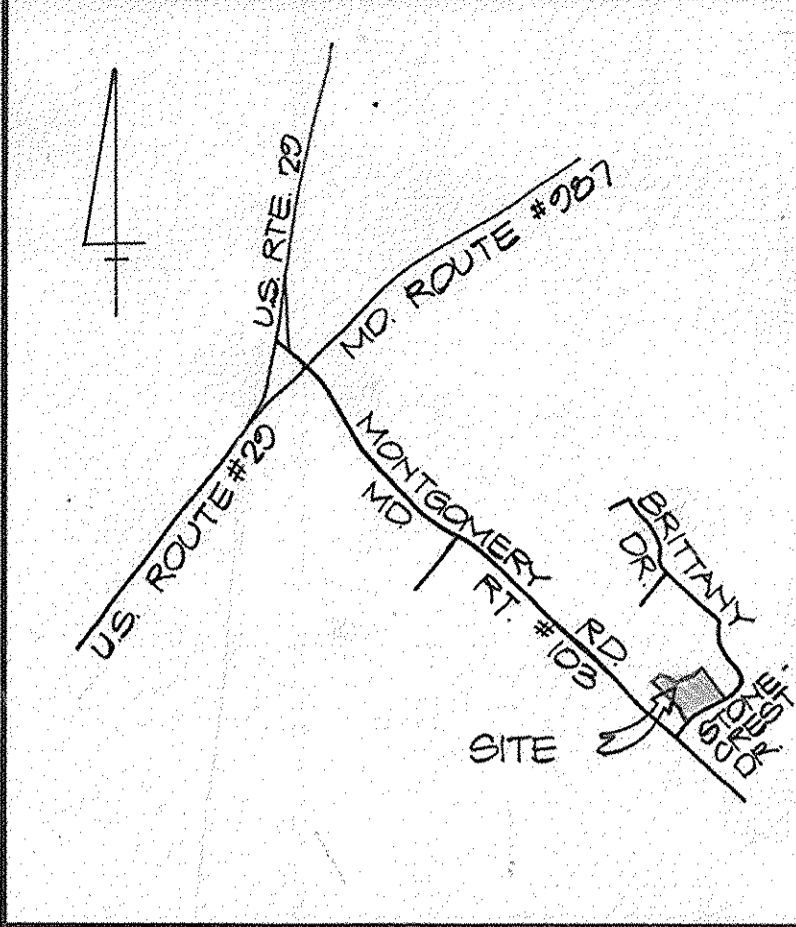
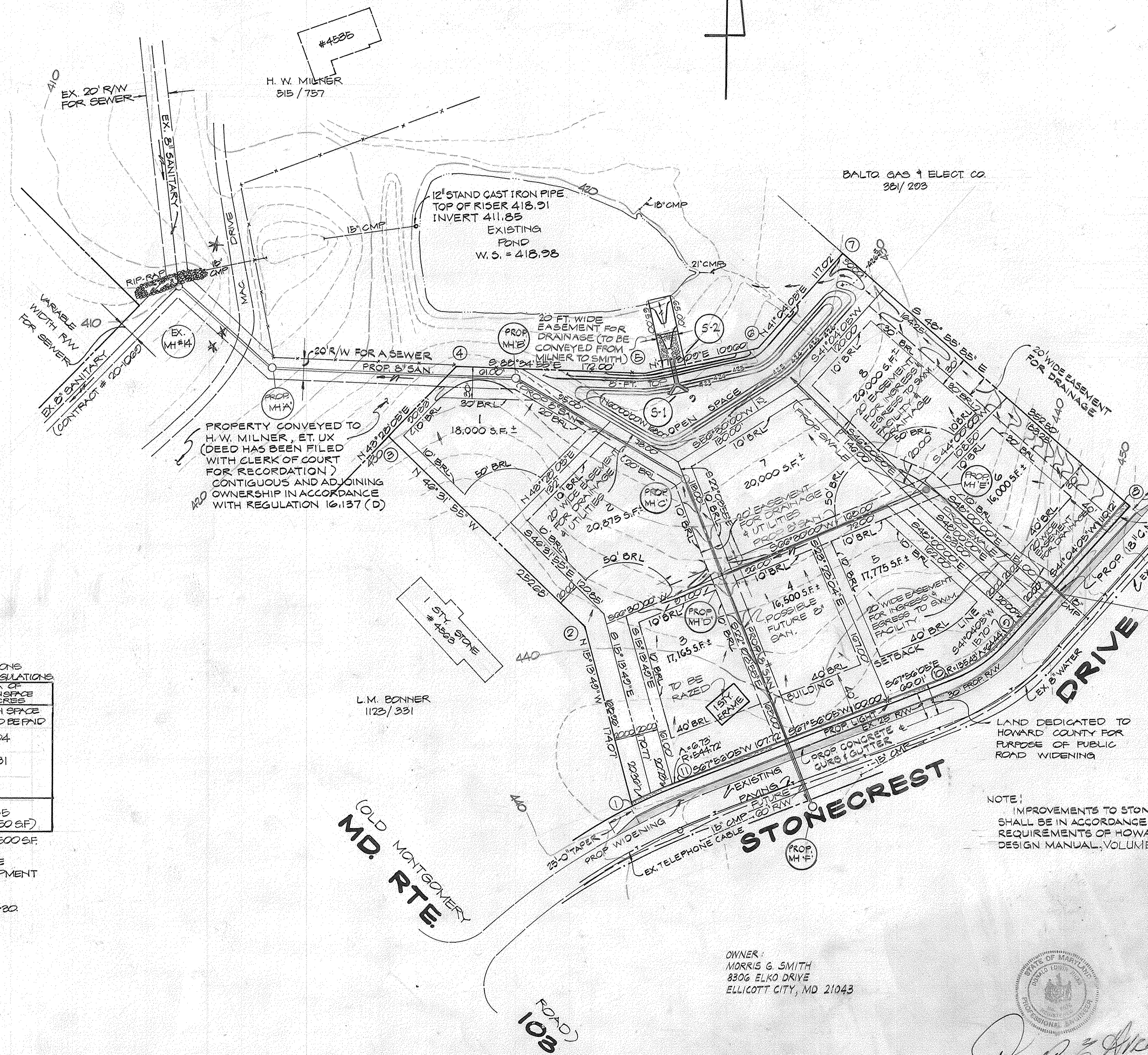


COORDINATES		
PT.	NORTH	EAST
1	514,619.99	854,911.47
2	514,783.02	854,867.09
3	514,956.85	854,889.70
4	515,022.41	854,745.85
5	515,015.15	854,917.80
6	515,042.39	855,024.68
7	515,130.62	855,101.55
8	514,902.33	855,363.54
9	514,777.30	855,254.60
10	514,740.22	855,202.62
11	514,632.65	854,954.50



VICINITY MAP
SCALE 1"=2000'



TABULATION OF LOT AREAS

LOT NO.	AREA (SF) ±	STEM (SF) ±	TOTAL (SF) ±
1	18,000±	5,860±	23,860±
2	20,875±	3,140±	24,015±
3	17,165±	-	17,165±
4	16,500±	-	16,500±
5	17,775±	-	17,775±
6	16,000±	-	16,000±
7	20,000±	3,140±	23,140±
8	20,000±	2,900±	22,900±
9	18,500±	-	18,500±
TOTAL	164,815±	15,040±	179,855±

SITE ANALYSIS

- ZONING: R-20
- NO. OF PROPOSED LOTS: 9
- TABULATION:
 - LOTS: 179,855 SQ. FT. OR 4.123 ACRES
 - RIGHT OF WAY: 2,784 SQ. FT. OR 0.063 ACRES
 - TOTAL: 182,639 SQ. FT. OR 4.187 ACRES
- SOILS MAP: N# 20
- PUBLIC WATER AND PUBLIC SEWER TO BE UTILIZED.
- TOPOGRAPHY SHOWN IS FROM ACTUAL FIELD SURVEY IN AUGUST, 1984 BY N.T.T. ASSOCIATES.
- CONTOUR INTERVAL - 2 FEET.
- OPEN SPACE FEE WILL BE PAID, FOR 3 LOTS, AS FOLLOWS: LOT NO. 2, 7 AND 8.

TABULATION TABLE

LOT SIZE AND MANDATORY OPEN SPACE PROVISIONS
RE: SECTION 100D.2 (R-20 DISTRICT) ZONING REGULATIONS

LOT SIZE (SQ. FT.)	NO. OF LOTS	AREA OF LOTS (AC)	MANDATORY OPEN SPACE PROVISIONS	AREA OF OPEN SPACE IN ACRES
20,000 OR LARGER	3	1.40±	SUBD. REQ.	OPEN SPACE FEE TO BE PAID
18,000-19,999	1	0.41	10%	0.04
16,000-17,999	4	1.55	20%	0.31
14,000-15,999	-	-	30%	-
TOTALS	8	3.36 (146,360 SF)		0.35 (15,250 SF)

TOTAL OPEN SPACE PROVIDED - LOT NO. 9 18,500 SF

- SEDIMENT AND EROSION CONTROL MEASURES TO BE PROVIDED WITH THE SUBMISSION OF SITE DEVELOPMENT AND ROAD CONSTRUCTION PLANS.
- SEE OFFICE OF PLANNING AND ZONING FILE NO. P&Z-32

HICKS ENGINEERING COMPANY INC.
CIVIL ENGINEERS, SURVEYORS & PLANNERS
232 COCKEYSVILLE ROAD
HUNT VALLEY, MARYLAND, 21030
TEL (301) 628-8066

TENTATIVELY APPROVED ON Dec. 3, 1985
OFFICE OF PLANNING AND ZONING OF HOWARD COUNTY
Amor Bandel
PLANNING DIRECTOR
Reilly

PRELIMINARY PLAN FOR
STONEBROOKE

2ND ELECTION DISTRICT HOWARD COUNTY, MD.
TAX MAP #31 PARCEL #21
SCALE 1"=50' DATE 3-30-85
DRAWN BY: T.A.W. CHECKED BY: DEH
REV. 12/12/85 SHEET 1 OF 1

James G. Hicks

OWNER:
MORRIS G. SMITH
8306 ELKO DRIVE
ELLCOTT CITY, MD 21043

