

LOT SIZE (S.F.)	NO.	AREA (AC.)	OPEN SPACE REQUIREMENT	OPEN SPACE REQ. (AC.)
12,000+ PLUS	6	1,927	8%	0.154
10,800-11,999	6	1,535	10%	0.154
9,600-10,799	11	2,565	20%	0.513
8,400-9,599	42	8,480	30%	2.544
TOTALS	65	14,447		3.365
TOTAL AREA NOT DEVELOPED				8.580 AC.
FLOOD PLAIN				2.932 AC.
AREA WITH SLOPES 25% OR GREATER				2.932 AC.
OPEN SPACE PROVIDED $(8,580 - 2,932) \div (5)(2.932)$				7.114 AC.
OPEN SPACE REQUIRED (FROM TOTAL ABOVE)				3.365 AC.

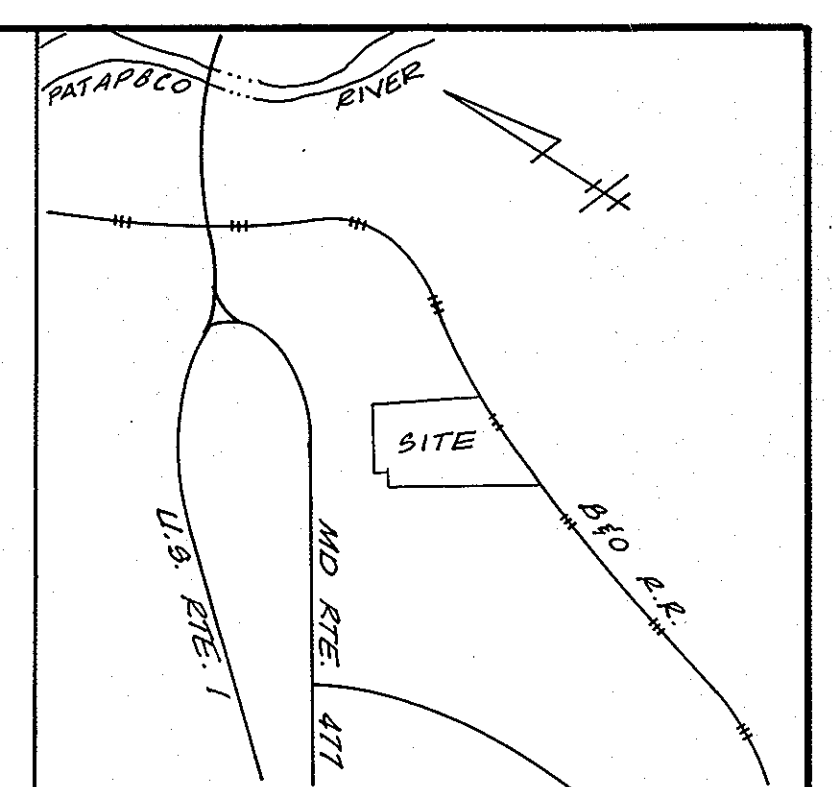
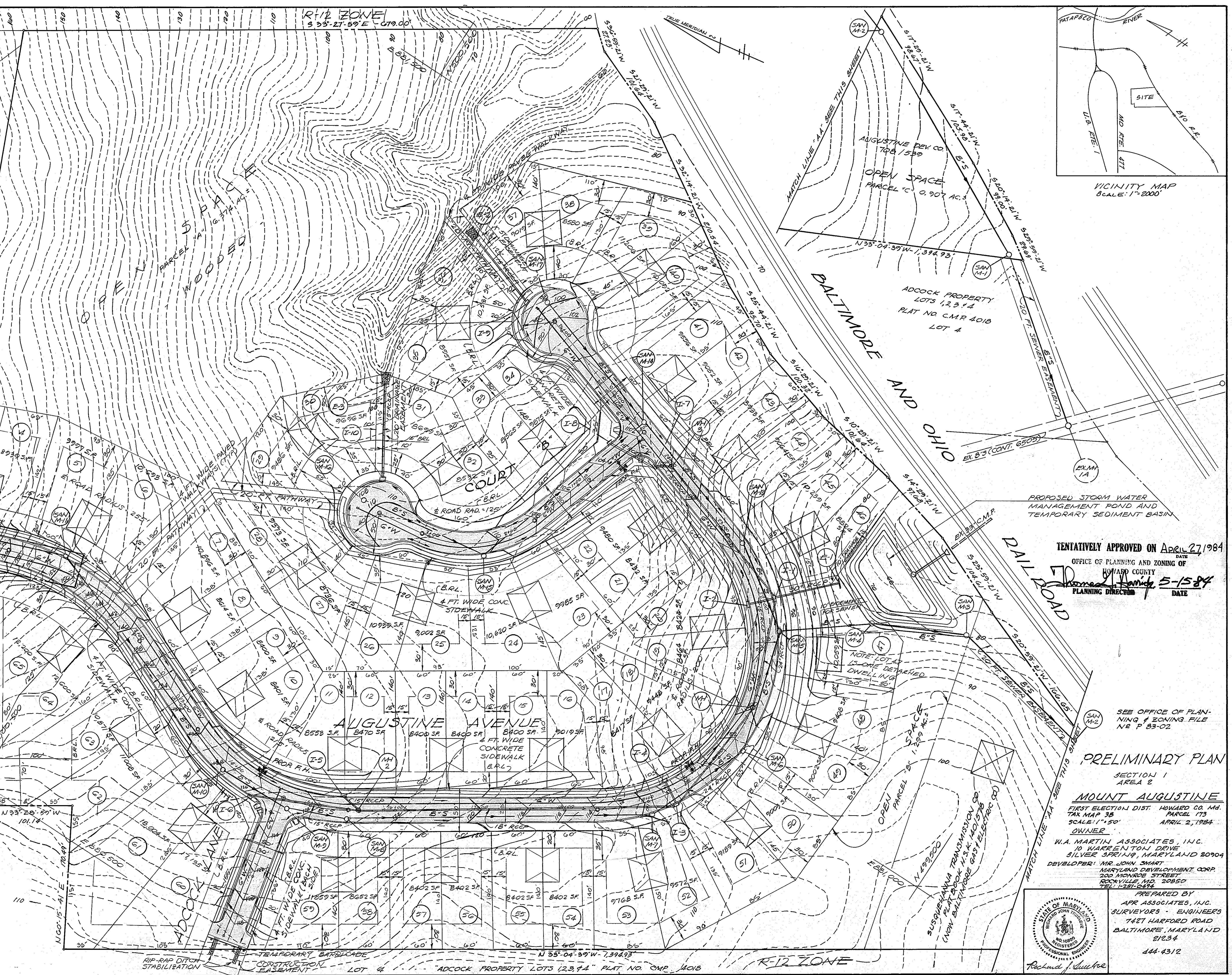
ELK FOREST COURT
 R-12 ZONE

MOUNT AUGUSTINE SECTION ONE AREA ONE
 PLAT BOOK 29/100

JOHN H. SHAB'S RESIDENTIAL FARM
 PLAT BOOK W.W.L. 93/937

- LEGEND**
- EXISTING CONTOURS
 - - - PROPOSED CONTOURS
 - ▨ PROPOSED PAVING W/ 7 INCH STD. CONC. CURB & GUTTER AND 4 FT. WIDE CONC. WALK
 - ▧ PROPOSED STORM DRAIN
 - ▩ PROPOSED WATER MAIN & FIRE HYDRANT
 - PROPOSED SANITARY SEWER
 - HOUSE LOCATION - 20' x 40' SEMI-DETACHED TYPICAL, 20' x 32' MINIMUM (LOT 31/32)
- NOTE: HOUSE LOCATION, SIZE, AND TYPE ARE FOR ILLUSTRATION ONLY. SIDE YARD SETBACKS ARE SHOWN FOR SEMI-DETACHED HOUSES.

- GENERAL NOTES**
1. TOTAL AREA OF SUBMISSION - - - 25.827 AC.
 2. ZONE - - - R-12
 3. MINIMUM LOT SIZE - - - 8400 S.F.
 4. PUBLIC SEWER & WATER (PATAPSCO I.T.P. NO. 17 FOR 52 LOTS ONLY)
 5. APPROVED SKETCH PLAN - - - S 82-10
 6. SEE ABOVE TABLE FOR OPEN SPACE REQUIREMENT CALCULATION.
 7. TRANSMISSION LINE R/W AREA - - 1,227 AC.
 8. ROADWAY AREA - - - 1,573 AC.
 9. LOT AREA - - - 14,447 AC.
 10. OPEN SPACE AREA - - - 8,580 AC.
 11. TOTAL NUMBER OF LOTS - - - 65



TENTATIVELY APPROVED ON April 27, 1984
 OFFICE OF PLANNING AND ZONING OF HOWARD COUNTY
 Planning Director: *Richard J. Switzer* DATE: 5-15-84

PRELIMINARY PLAN
 SECTION 1
 AREA 2
MOUNT AUGUSTINE
 FIRST ELECTION DIST. HOWARD CO. MD.
 TAX MAP 38 PARCEL 173
 SCALE: 1" = 50' APRIL 2, 1984
 OWNER:
 W.A. MARTIN ASSOCIATES, INC.
 10 WARRENTON DRIVE
 SILVER SPRING, MARYLAND 20904
 DEVELOPER: MR. JOHN SMART
 MARYLAND DEVELOPMENT CORP.
 200 MONROE STREET
 ROCKVILLE, MD 20850
 TEL: 1-281-0492

PREPARED BY
 APR ASSOCIATES, INC.
 SURVEYORS - ENGINEERS
 7427 HARFORD ROAD
 BALTIMORE, MARYLAND
 21234
 444-4312