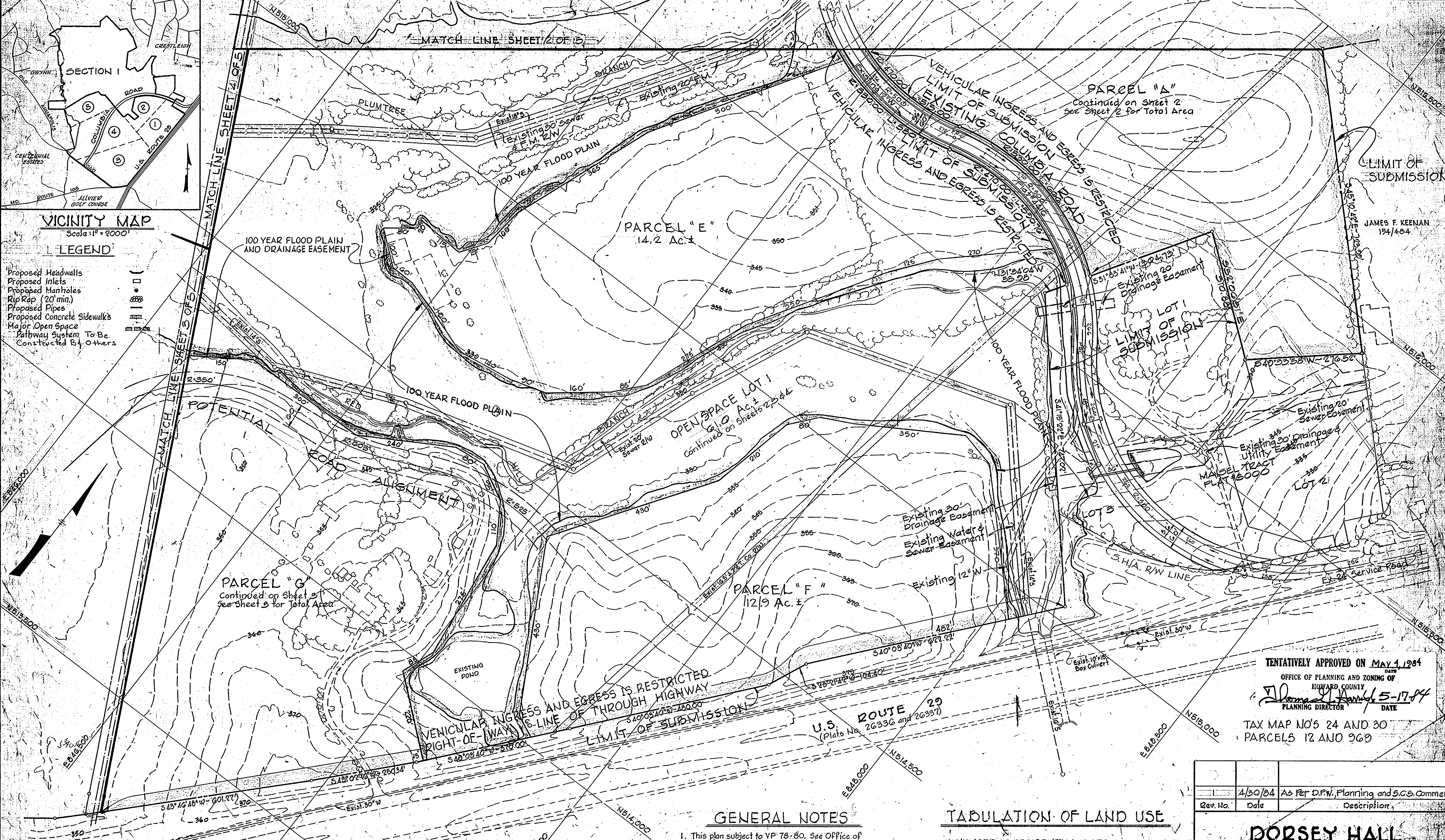


MATCH LINE SHEET 2 OF 5



VICINITY MAP  
Scale 1" = 2000'

LEGEND

- Proposed Headwalls
- Proposed Inlets
- Proposed Manholes
- Rip Rap (20' min.)
- Proposed Pipes
- Proposed Concrete Sidewalks
- Major Open Space
- Pathway System To Be Constructed By Others

100 YEAR FLOOD PLAIN AND DRAINAGE EASEMENT

PARCEL "E"  
14.2 Ac. ±

OPEN SPACE LOT 1  
2.10 Ac. ±

PARCEL "F"  
12.9 Ac. ±

PARCEL "G"  
Continued on Sheet 3  
See Sheet 3 for Total Area

TENTATIVELY APPROVED ON MAY 4, 1984

OFFICE OF PLANNING AND ZONING OF  
HOWARD COUNTY  
*James J. Dandy*  
PLANNING DIRECTOR  
DATE 5-17-84

TAX MAP NO'S 24 AND 30  
PARCELS 12 AND 969

GENERAL NOTES

1. This plan subject to VP 78-80. See Office of Planning and Zoning File 5-78-20, P-79-07
2. Existing Zoning is R-20.
3. Topography taken from aerial top, prepared by Aero Service Corporation 1960.
4. Public Water and Sewer Systems to be made available and utilized.
5. All building restriction lines shall be in accordance with Howard County Zoning Regulations and VP-78-70.
6. All streets are 30' wide except as noted.
7. The lots or parcels shown on these plans are subject to the supplemental subdivision construction change spotted by section 20.511A of the Howard County Code and the Executive Order 88-707.

TABULATION OF LAND USE

1. NUMBER OF RESIDENTIAL LOTS	0
2. NUMBER OF OPEN SPACE LOTS	3
3. NUMBER OF PARCELS	9
4. OPEN SPACE	115.2 Ac.
5. ROADWAY	15.3 Ac.
6. RESIDENTIAL LOTS	0.0 Ac.
7. PARCELS	230.9 Ac.
TOTAL	361.4 Acres

SPECIAL NOTE

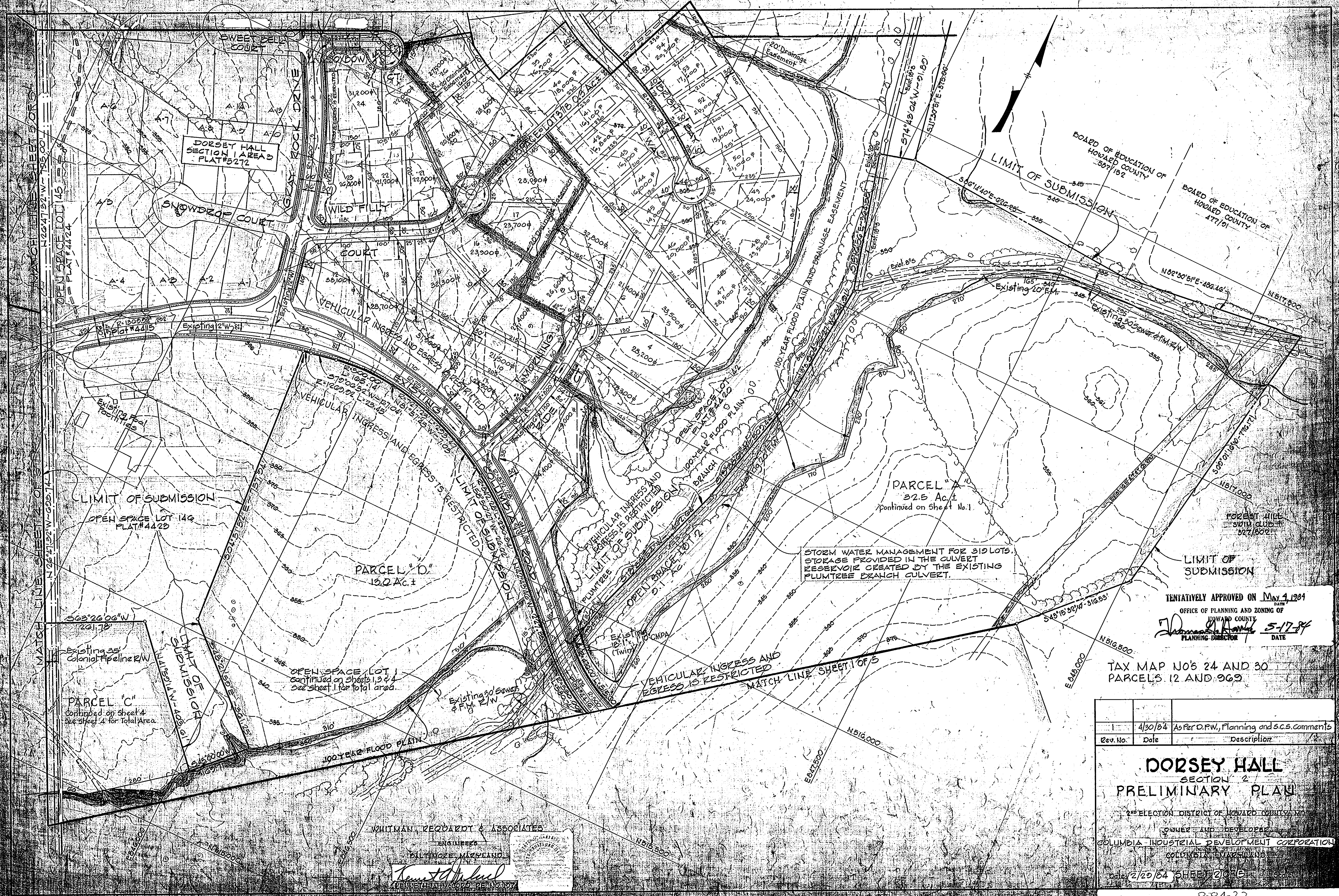
1. 100 year flood plain and drainage easements to be dedicated to the county.
2. The 100 year flood level shown hereon is based upon information provided by Century Engineering Inc. See Little Patuxent River Hydrology Model sheets 229-41, 229-42, 230-42, 231-41, and 231-42.
3. The major open space system shown hereon is schematic only and subject to final design by the Columbia Association, and may, but is not required to contain future pathways.
4. All existing structures shown hereon will be evaluated during development to determine their removal or restoration.

WHITMAN, REQUARDY & ASSOCIATES

ENGINEERS  
BALTIMORE, MARYLAND  
*Robert J. Whitman*  
WALTER A. McCOMB, PEIN 10774

**DORSEY HALL**  
SECTION 2  
**PRELIMINARY PLAN**  
2ND ELECTION DISTRICT OF HOWARD COUNTY, MD  
OWNER AND DEVELOPER  
COLUMBIA INDUSTRIAL DEVELOPMENT CORPORATION  
DATE 2/27/84 SHEET 11 OF 15





TENTATIVELY APPROVED ON May 1, 1984  
 DATE  
 OFFICE OF PLANNING AND ZONING OF  
 HOWARD COUNTY  
*James R. Roney* 5-17-84  
 PLANNING DIRECTOR DATE

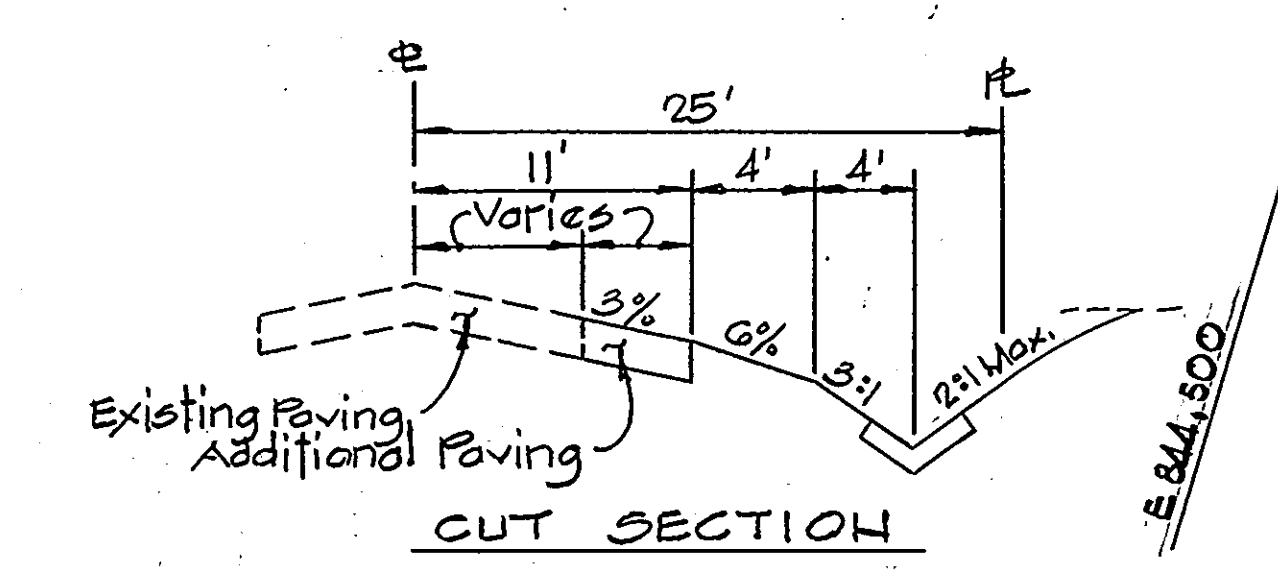
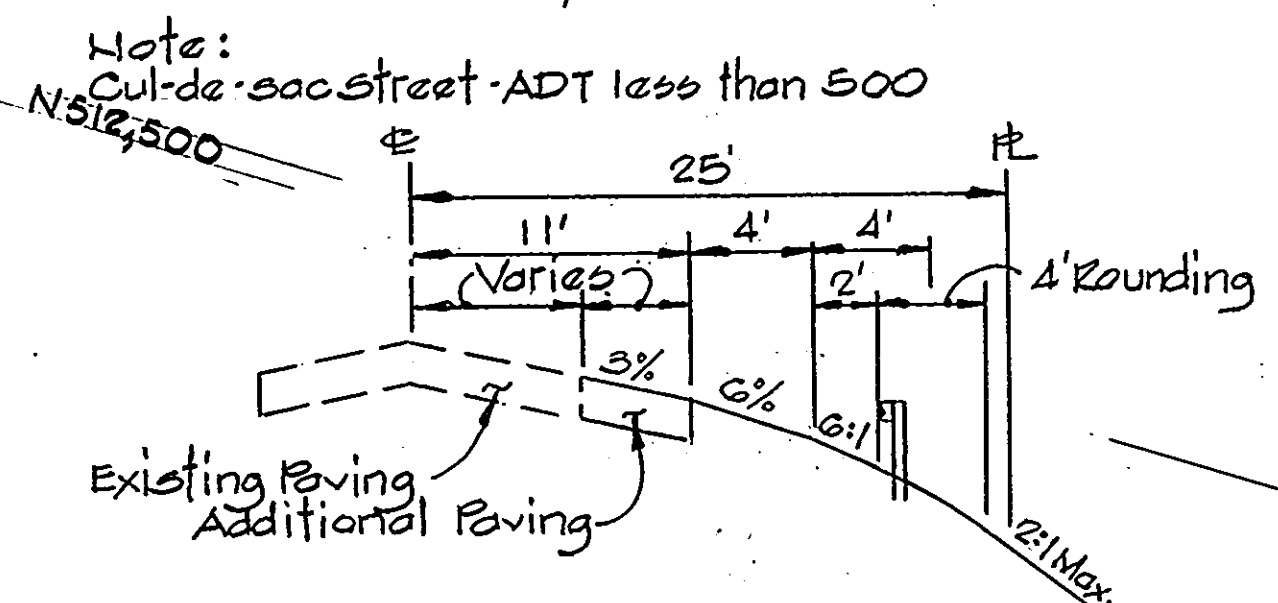
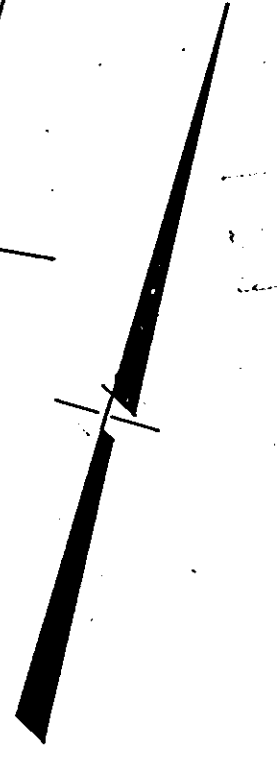
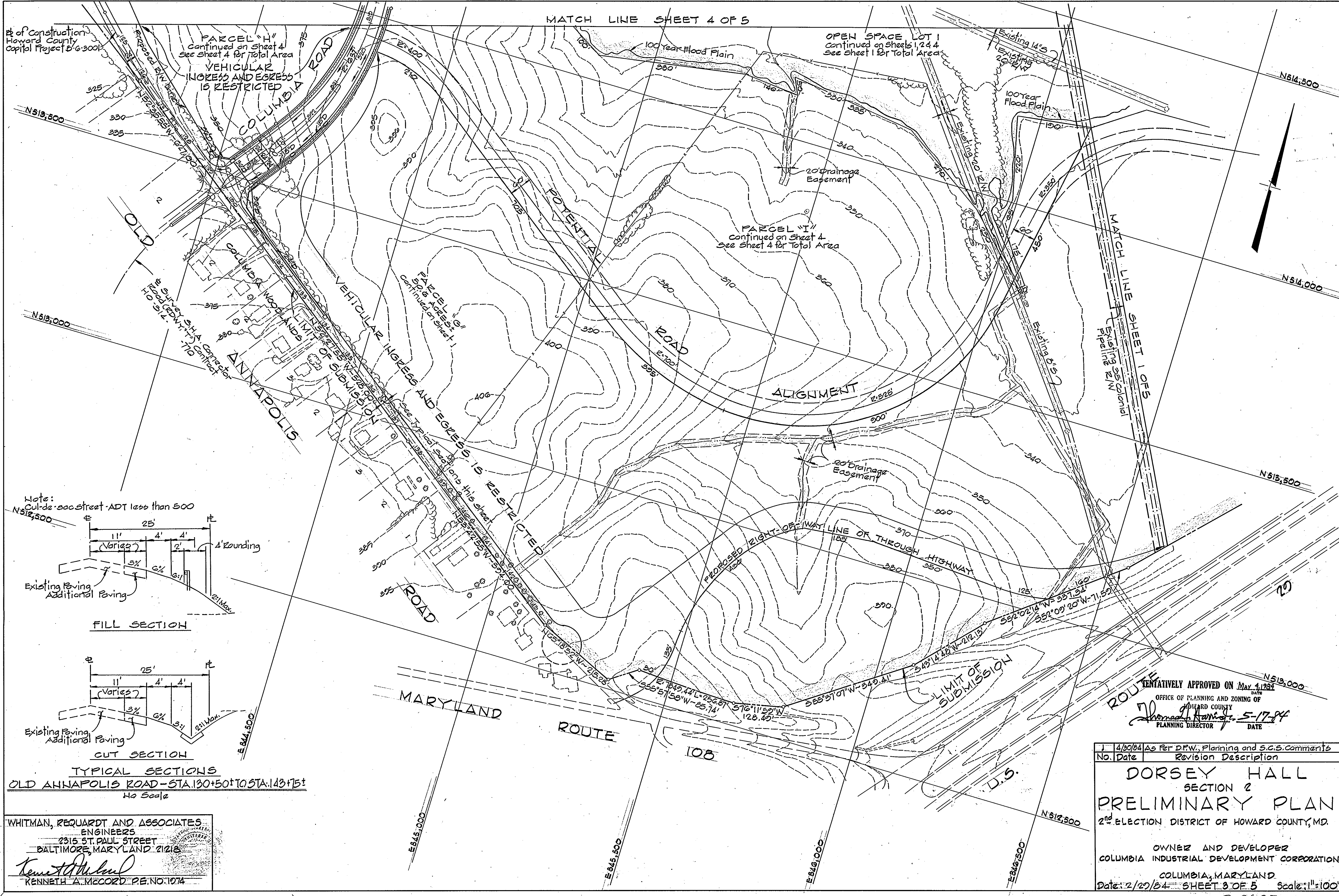
TAX MAP NO'S 24 AND 30  
 PARCELS 12 AND 969

Rev. No.	Date	Description
1	4/30/84	As Per D.P.W., Planning and S.C.S. comments

**DORSEY HALL**  
 SECTION 2  
 PRELIMINARY PLAN  
 2<sup>ND</sup> ELECTION DISTRICT OF HOWARD COUNTY, MD.  
 OWNER AND DEVELOPER  
 COLUMBIA INDUSTRIAL DEVELOPMENT CORPORATION  
 COLUMBIA, MARYLAND  
 DATE: 2/29/84 SHEET 20 OF 21

WHITMAN, REQUARDT & ASSOCIATES  
 ENGINEERS  
 BALTIMORE, MARYLAND  
*Robert J. Whitman*  
 REGISTERED PROFESSIONAL ENGINEER  
 STATE OF MARYLAND  
 LICENSE NO. 10208





TYPICAL SECTIONS  
 OLD ANNAPOLIS ROAD - STA. 130+50 TO STA. 143+75  
 No Scale

WHITMAN, REQUARDT AND ASSOCIATES  
 ENGINEERS  
 2315 ST. PAUL STREET  
 BALTIMORE, MARYLAND 21218  
 Kenneth A. McCord  
 KENNETH A. MCCORD P.E. NO. 1074

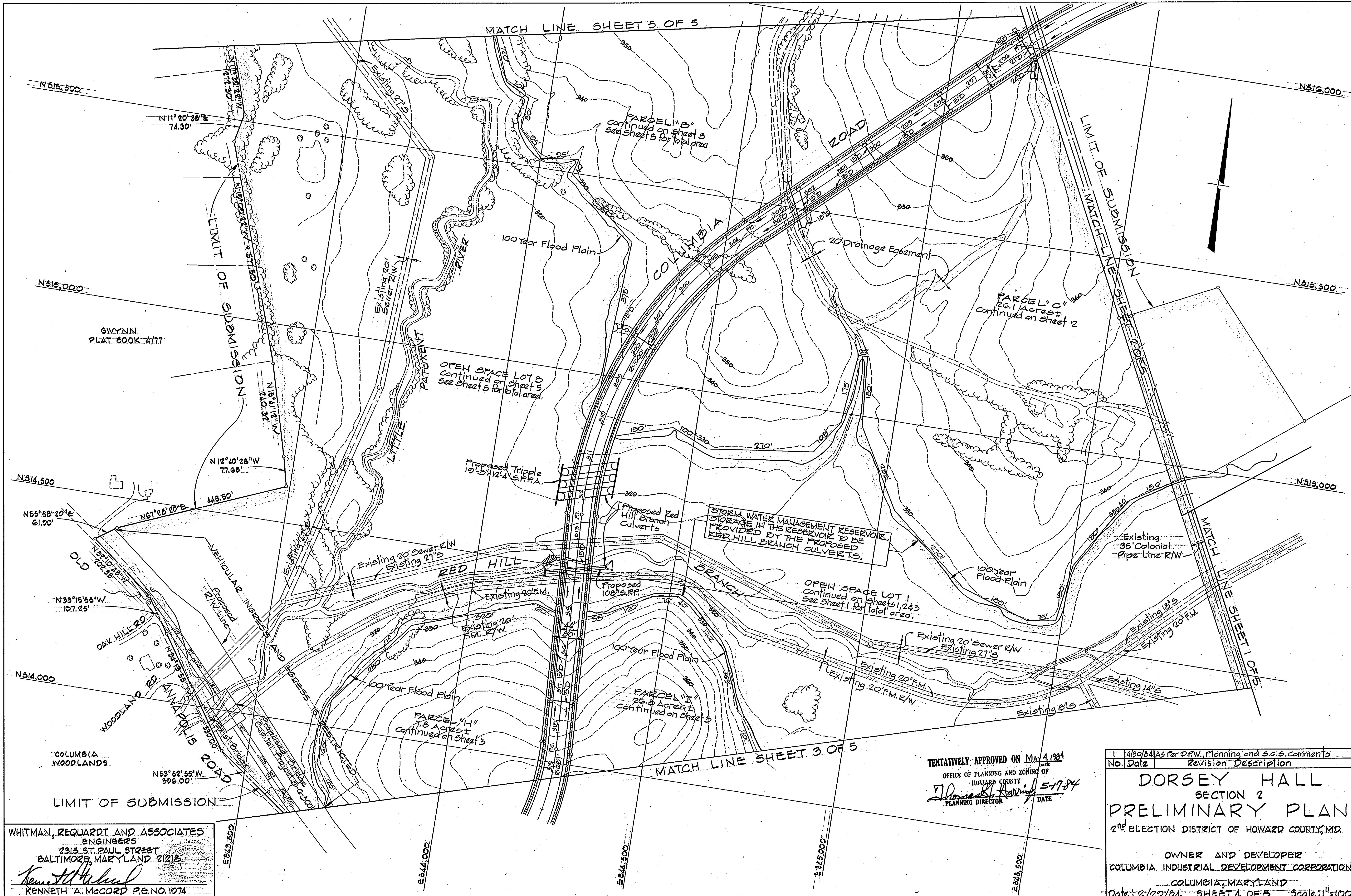
TENTATIVELY APPROVED ON May 4, 1984  
 DATE  
 OFFICE OF PLANNING AND ZONING OF  
 HOWARD COUNTY  
 James A. Hamner, 5-17-84  
 PLANNING DIRECTOR DATE

No.	Date	Revision Description
1	4/29/84	As Per D.P.W., Planning and S.C.S. Comments

**DORSEY HALL**  
 SECTION 2  
**PRELIMINARY PLAN**  
 2<sup>ND</sup> ELECTION DISTRICT OF HOWARD COUNTY, MD.

OWNER AND DEVELOPER  
 COLUMBIA INDUSTRIAL DEVELOPMENT CORPORATION  
 COLUMBIA, MARYLAND  
 Date: 2/29/84 SHEET 3 OF 5 Scale: 1"=100'





WHITMAN, REQUARDT AND ASSOCIATES  
 ENGINEERS  
 2315 ST. PAUL STREET  
 BALTIMORE, MARYLAND 21218  
*Kenneth A. McCord*  
 KENNETH A. MCCORD P.E. NO. 1074

TENTATIVELY APPROVED ON May 4, 1984  
 OFFICE OF PLANNING AND ZONING OF  
 HOWARD COUNTY  
*Thomas J. Harris* 5-17-84  
 PLANNING DIRECTOR DATE

No.	Date	Revision	Description
1	4/30/84	As Per	D.P.W., Planning and S.C.S. Comments

**DORSEY HALL**  
 SECTION 2  
**PRELIMINARY PLAN**  
 2<sup>ND</sup> ELECTION DISTRICT OF HOWARD COUNTY, MD.

OWNER AND DEVELOPER  
 COLUMBIA INDUSTRIAL DEVELOPMENT CORPORATION  
 COLUMBIA, MARYLAND

Date: 2/20/84 SHEET 4 OF 5 Scale: 1"=100'



DEVELOPMENT  
INVESTMENT CORP.  
388/631

DORSEY HALL  
SECTION 1 AREAS  
PLATS 4870 THRU 4880

DORSEY HALL  
SECTION 1 AREAS  
PLAT 4424

100 YEAR FLOOD PLAIN  
AND DRAINAGE EASEMENT

OPEN SPACE LOT 422  
PLAT #4880

OPEN SPACE  
LOT 145  
PLAT #4424

LIMIT OF SUBMISSION  
S 71° 01' 14" W - 131.17'

PARCEL "B"  
47.0 ACRES  
Continued on sheet 4

OPEN SPACE LOTS  
45.7 ACRES  
Continued on sheet 4

MATCH LINE SHEET 4 OF 5

TENTATIVELY APPROVED ON MAY 1, 1984  
DATE  
OFFICE OF PLANNING AND ZONING OF  
HOWARD COUNTY  
*Thomas Harris* 5-17-84  
PLANNING DIRECTOR DATE

Rev. No.	Date	Description
1/30/84	As Per DPW, Planning and S.C.S. Comments	

### DORSEY HALL SECTION 1 PRELIMINARY PLAN

2<sup>ND</sup> ELECTION DISTRICT OF HOWARD COUNTY, MD  
COLUMBIA INDUSTRIAL DEVELOPMENT CORPORATION  
COLUMBIA, MARYLAND

TAX MAP NOS 24 AND 30  
PARCELS 12 AND 960

Date 2/20/84 SHEET 5 OF 6

WHITMAN, DEQUARDT & ASSOCIATES  
ENGINEERS  
BALTIMORE, MARYLAND