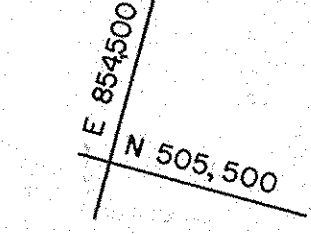


VICINITY MAP
SCALE: 1" = 1200'

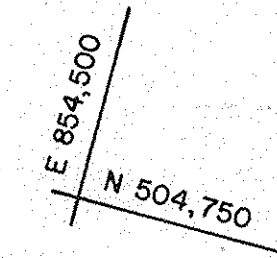
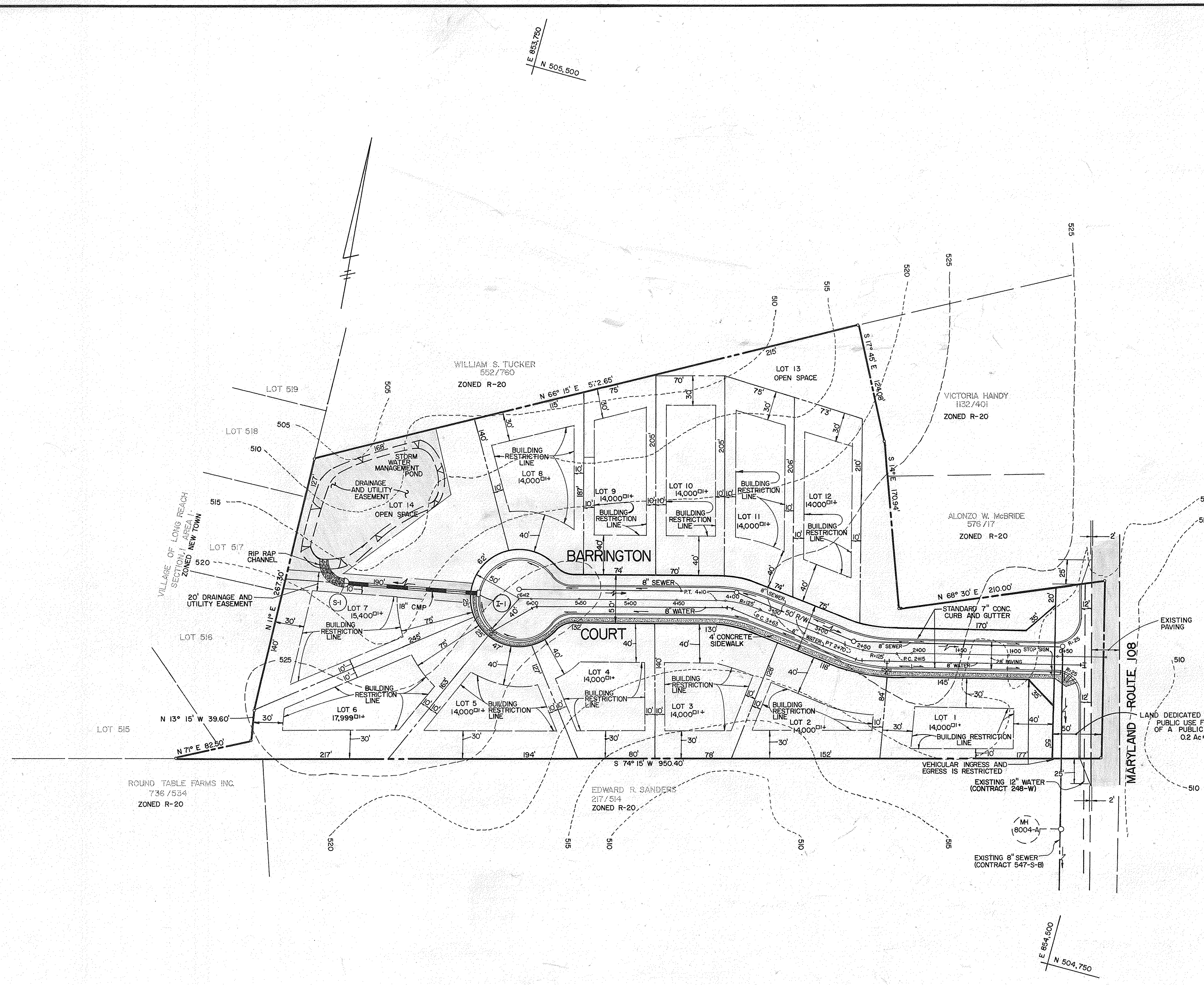
- GENERAL NOTES
- 1) SUBJECT PROPERTY ZONED R-20 PER OCTOBER 3, 1977 COMPREHENSIVE ZONING PLAN.
 - 2) PROPOSED NUMBER OF BUILDABLE LOTS 12
 - 3) TOTAL AREA OF LOTS 3.98 Ac*
 - 4) TOTAL AREA OF ROADWAYS TO BE DEDICATED TO HOWARD COUNTY 0.9 Ac*
 - 5) TOTAL AREA OF OPEN SPACE PROVIDED 1.15 Ac*
 - 6) TOTAL AREA OF OPEN SPACE REQUIRED 1.15 Ac*
 - 7) TOTAL AREA OF PROPERTY 6.00 Ac*
 - 8) PROPERTY IS LOCATED ON TAX MAP NO. 30 PARCEL 85
 - 9) PUBLIC WATER AND SEWER WILL BE USED WITHIN THIS DEVELOPMENT.
 - 10) PROPERTY IS LOCATED ON ZONING MAP NO. 30.



LOT SIZE AND MANDATORY OPEN SPACE PROVISIONS

LOT SIZE (SQ. FT.)	NUMBER OF LOTS	AREA OF LOTS (ACRES +)	MANDATORY OPEN SPACE REQUIRED	AREA OF OPEN SPACE (ACRES +)
16,000 TO 17,999	1	0.41	20%	0.08 Ac*
14,000 TO 15,999	11	3.57	30%	1.07 Ac*
TOTALS	12	3.98	-	1.15 Ac*

TOTAL OPEN SPACE PROVIDED 1.15 Ac.*



TENTATIVELY APPROVED ON JAN. 27, 1984
OFFICE OF PLANNING AND ZONING OF
HOWARD COUNTY
Thomas A. Howard 2-7-84
PLANNING DIRECTOR DATE



FISHER, COLLINS, AND CARTER, INC.
CONSULTING ENGINEERS AND LAND SURVEYORS
8386 COURT AVENUE
ELLICOTT CITY, MARYLAND 21043
TELEPHONE (301) 461-2855

OWNER AND DEVELOPER
ORRING DEVELOPMENT CORPORATION
SUITE 114 GORMAN PLAZA BUILDING
COLUMBIA, MARYLAND 21045

PRELIMINARY PLAN
BARRINGTON WOODS
SIXTH ELECTION DISTRICT
HOWARD COUNTY MARYLAND
TAX MAP 30 PARCEL 85
SCALE 1" = 50' JANUARY 6, 1984
S 84-10 P 84-19

P-84-19