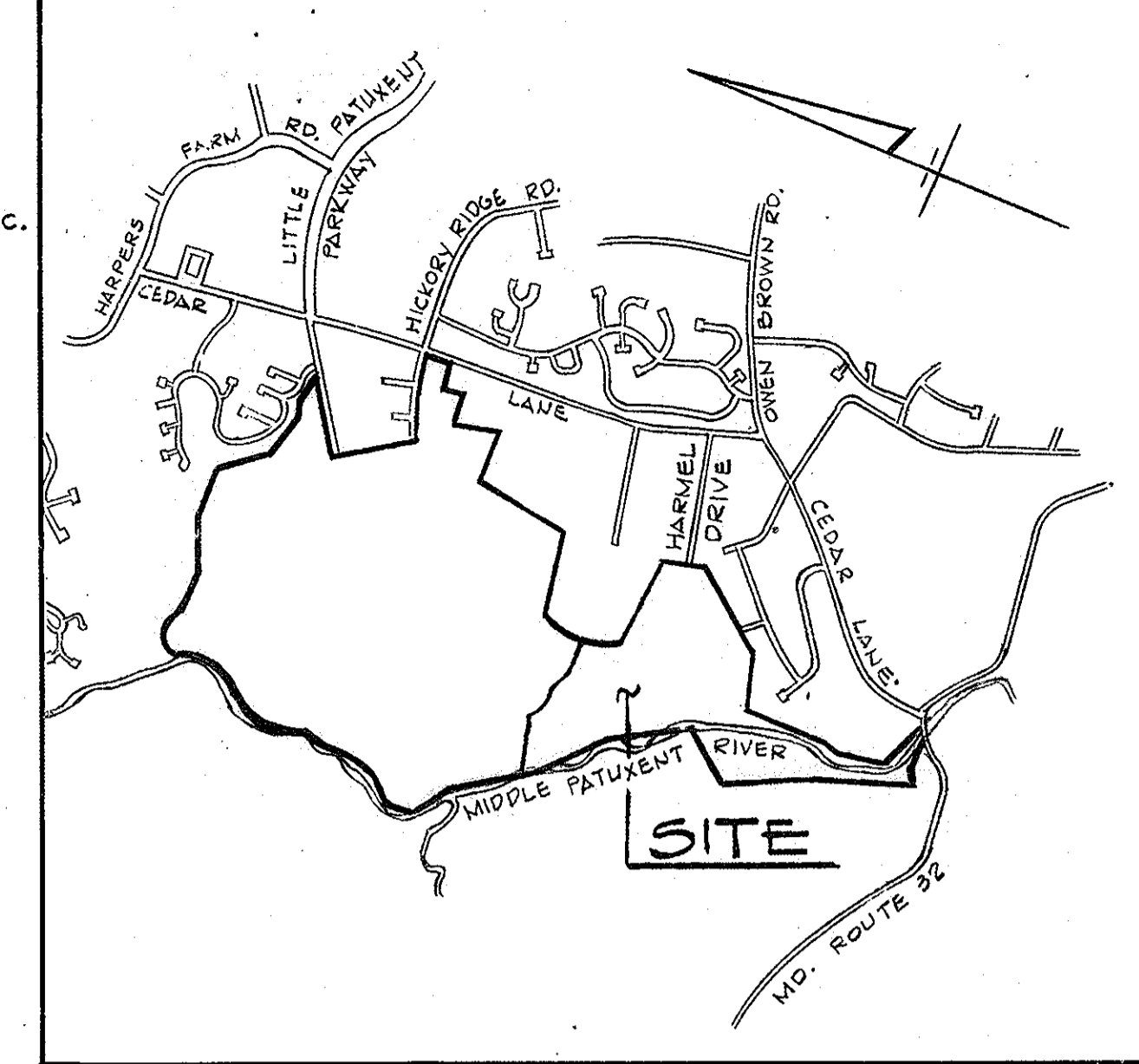


LOT AND AREA DATA

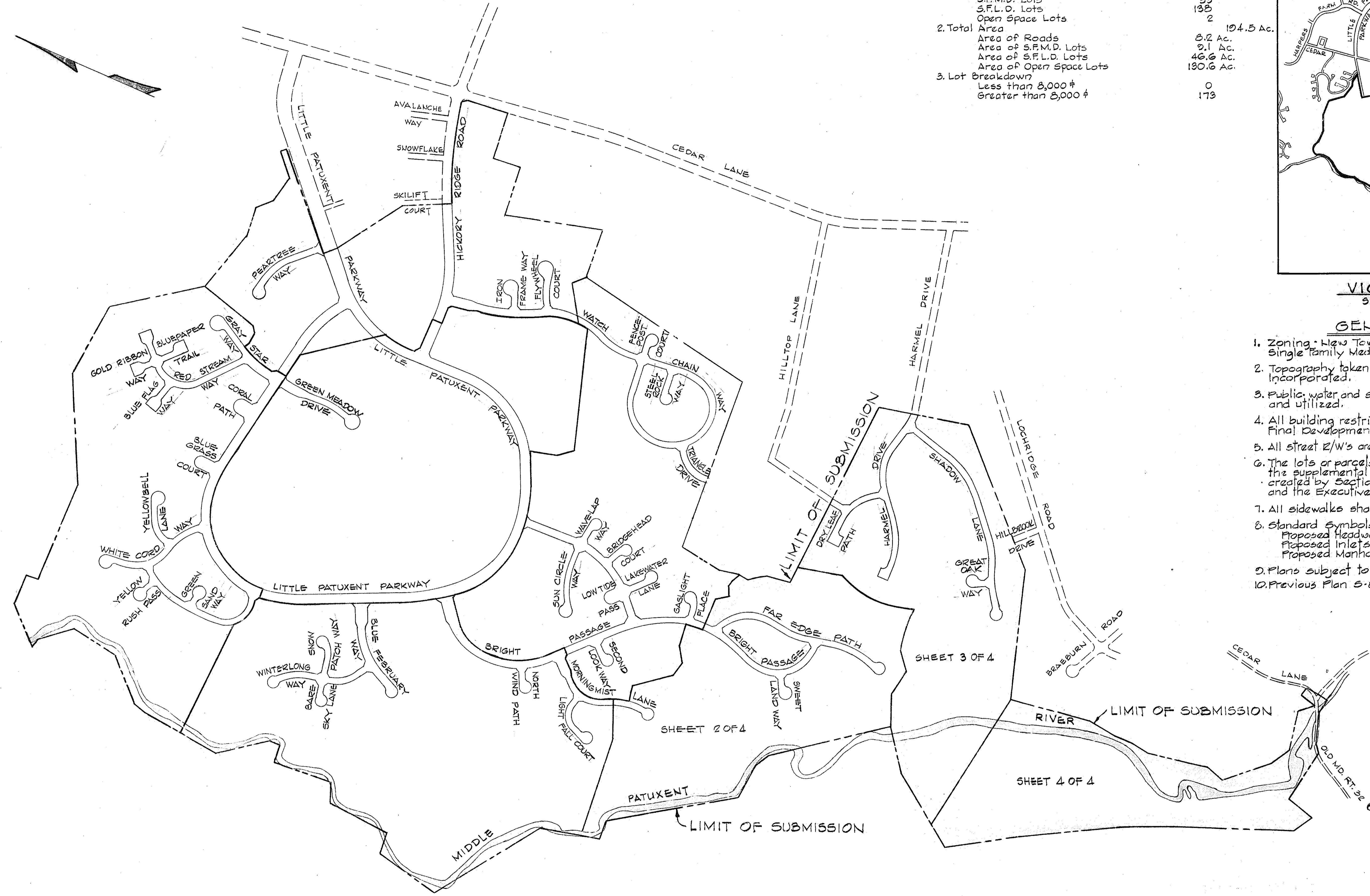
1. Total Number of Lots (including open space)	173
S.F.M.D. Lots	33
S.F.L.D. Lots	138
Open Space Lots	2
2. Total Area	104.5 Ac.
Area of Roads	3.2 Ac.
Area of S.F.M.D. Lots	2.1 Ac.
Area of S.F.L.D. Lots	46.6 Ac.
Area of Open Space Lots	130.6 Ac.
3. Lot Breakdown	
Less than 3,000 sq ft	0
Greater than 3,000 sq ft	173



VICINITY MAP
Scale: 1" = 2,000'

GENERAL NOTES

- Zoning: New Town (Single Family Low Density, Single Family Medium Density and Open Space).
- Topography taken from aerial topo prepared by Maps, Incorporated.
- Public water and sewer systems to be made available and utilized.
- All building restriction lines shall be in accordance with Final Development Plan Phase (B).
- All street R/W's are 50' wide except as noted.
- The lots or parcels shown on these plans are subject to the supplemental sewer in-aid-of-construction charge created by Section 20.311A of the Howard County Code, and the Executive Order No. 72-2.
- All sidewalks shall be 4' wide.
- Standard Symbols:
 Proposed Headwalls:
 Proposed Inlets:
 Proposed Manholes:
 Proposed Pipes:
 Proposed Concrete Sidewalks:
 Proposed Pathway System:
- Plans subject to V.P. 82-56 and V.P. 83-106.
- Previous Plan S-81-04 and Planning Board Case 130.



INDEX MAP
Scale: 1" = 400'

TENTATIVELY APPROVED ON May 31, 1983
DATE
OFFICE OF PLANNING AND ZONING OF
HOWARD COUNTY

PLANNING DIRECTOR 7-21-83
DATE

WHITMAN, REQUARDT AND ASSOCIATES
ENGINEERS
BALTIMORE, MARYLAND

KENNETH A. MCCORD PE No. 1074

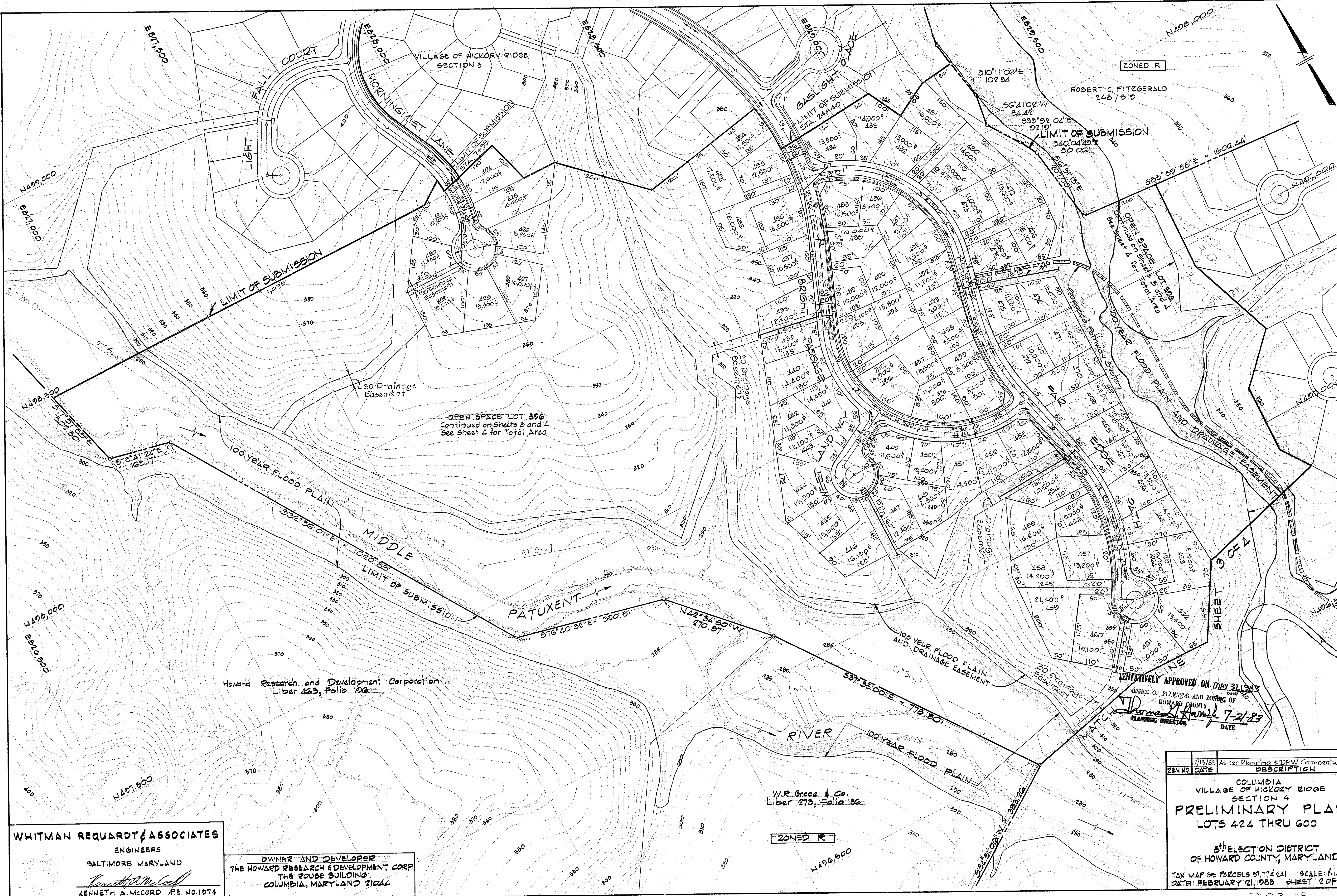
OWNER AND DEVELOPER
THE HOWARD RESEARCH & DEVELOPMENT CORP
THE ROUSE BUILDING
COLUMBIA, MARYLAND 21044

REV. NO.	DATE	DESCRIPTION
1	7/13/83	As per Planning & DPW Comments

COLUMBIA
VILLAGE OF HICKORY RIDGE
SECTION 4
PRELIMINARY PLAN
LOTS 424 THRU 600

5th ELECTION DISTRICT
OF HOWARD COUNTY, MARYLAND

TAX MAP 85 PARCELS 87, 77 & 241 SCALE AS SHOWN
DATE: FEBRUARY 21, 1983 SHEET 1 OF 4



WHITMAN REQUARDT & ASSOCIATES
 ENGINEERS
 BALTIMORE MARYLAND
Kenneth A. McCord
 KENNETH A. MCCORD P.E. NO. 1074

OWNER AND DEVELOPER
 THE HOWARD RESEARCH & DEVELOPMENT CORP.
 THE ROUSE BUILDING
 COLUMBIA, MARYLAND 21044

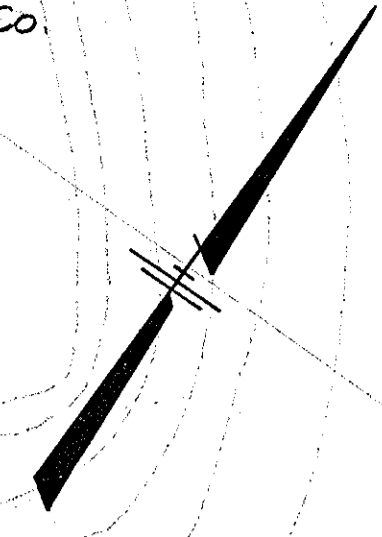
Howard Research and Development Corporation
 Liber 463, Folio 106

W.R. Grace & Co.
 Liber 273, Folio 186

TEMPORARILY APPROVED ON MAY 31, 1983
 OFFICE OF PLANNING AND ZONING OF
 HOWARD COUNTY
Thomas J. Hank 7-21-83
 PLANNING DIRECTOR DATE

REV. NO.	DATE	DESCRIPTION
1	7/13/83	As per Planning & DPW Comments
COLUMBIA VILLAGE OF HICKORY RIDGE SECTION 4 PRELIMINARY PLAN LOTS 424 THRU 600 5 TH ELECTION DISTRICT OF HOWARD COUNTY, MARYLAND TAX MAP 05 PARCELS 57, 77 & 241 SCALE: 1"=100' DATE: FEBRUARY 21, 1983 SHEET 2 OF 4		

W.R. Grace & Co.
273/186



LIMIT OF SUBMISSION

MATCH LINE

SHEET 2 OF 4

LIMIT OF SUBMISSION

MATCH LINE SHEET 4 OF 4

MIDDLE PATUXENT RIVER

OPEN SPACE LOT 500
Continued on Sheets 2 & 4
See Sheet 4 for Total Area

PROPOSED STORM WATER
MANAGEMENT POND
10 YEAR STORAGE
32.4 AC. FT.

Proposed Pathway System

OPEN SPACE LOT 520
Continued on Sheet 2 & 4
See Sheet 4 for Total Area

20' Drainage Easement

100 YEAR FLOOD PLAIN AND DRAINAGE EASEMENT

Braeburn Community Assn.
Liber 502, Folio 300

Giacomo Capello
Liber 385, Folio 021

Irving Boehm
Liber 365, Folio 635

Edmond T. Stridge
Liber 292, Folio 353

Robert R. Gastrock
Liber 424, Folio 11

Morris Range
Liber 457, Folio 660

Mari Miller
Liber 790, Folio 106

Albert M. Montagna
Liber 759, Folio 628

Donald E. Rindler
Liber 638, Folio 756

Edward C. Holwack
Liber 448, Folio 20

James W. Mitchell
Liber 812, Folio 103

David C. Martin
Liber 400, Folio 65

James A. McConnell
Liber 435, Folio 833

Joseph F. DeChabed
Liber 507, Folio 591

Dawitt M. Boyar
Liber 507, Folio 791
S28°47'58"E
91.86'

HEADING PROPERTY
Plat-C.M.R. No. 355

TENTATIVELY APPROVED ON (MAY 3) 1983

OFFICE OF PLANNING AND ZONING OF
HOWARD COUNTY
PLANNING DIRECTOR
DATE 7-21-83

OWNER AND DEVELOPER
THE HOWARD RESEARCH & DEVELOPMENT CORP.
THE ROUSE BUILDING
COLUMBIA, MARYLAND 21044

WHITMAN, REQUARDT & ASSOCIATES
ENGINEERS
BALTIMORE, MARYLAND

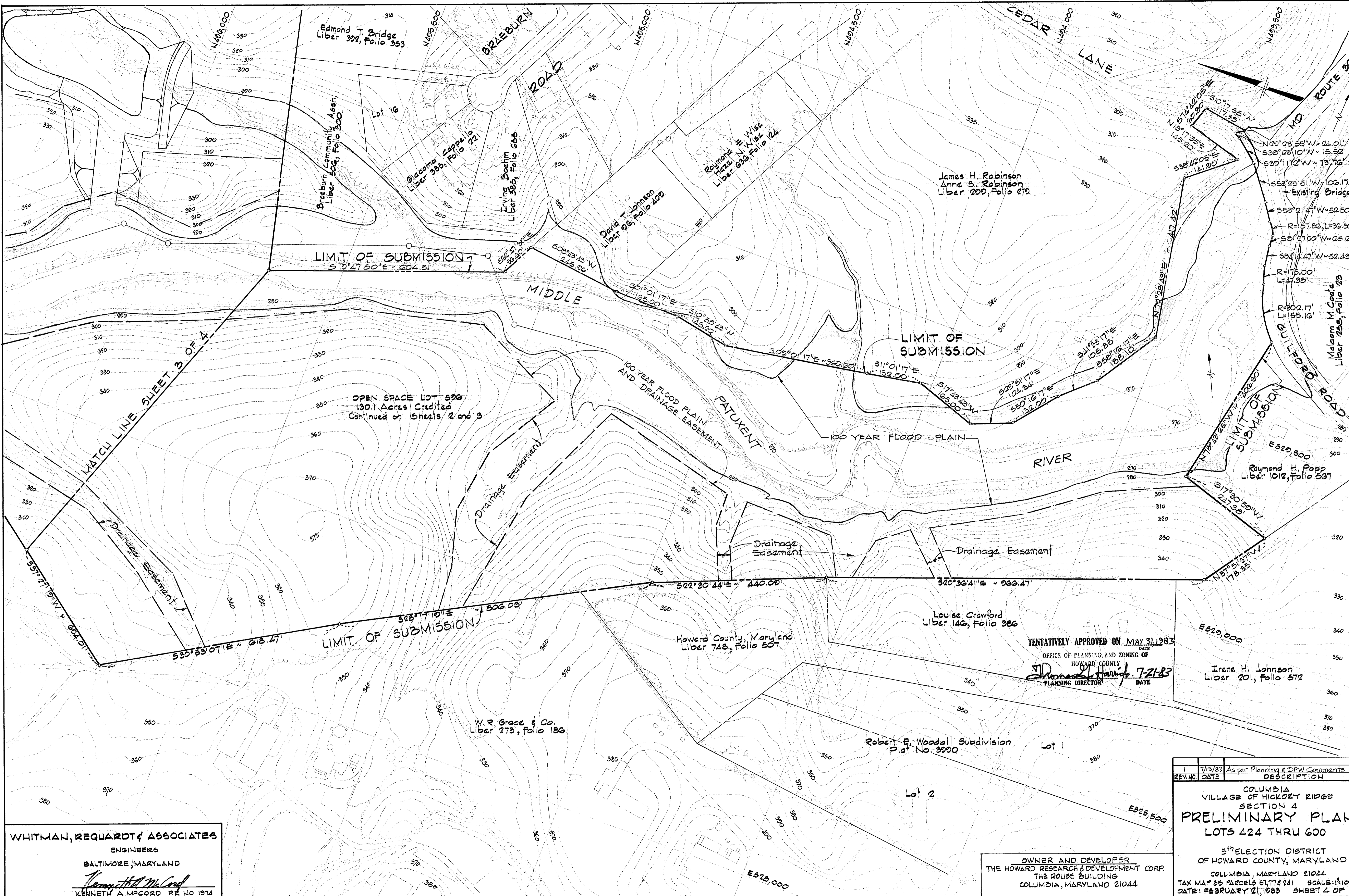
KENNETH A. McCORD P.E. NO. 1974

REV. NO.	DATE	DESCRIPTION
1	7/13/83	As per Planning & DPW Comments

COLUMBIA VILLAGE OF HICKORY RIDGE SECTION 4
PRELIMINARY PLAN
LOTS 424 THRU 600

5th ELECTION DISTRICT
OF HOWARD COUNTY, MARYLAND

TAX MAP 98 PARCELS 57, 174 241 SCALE: 1"=100'
DATE: FEBRUARY 21, 1983 SHEET 3 OF 4



WHITMAN, REQUARDT & ASSOCIATES
 ENGINEERS
 BALTIMORE, MARYLAND
Kenneth A. McCord
 KENNETH A. MCCORD P.E. NO. 1974

TENTATIVELY APPROVED ON **MAY 31, 1983**
 DATE
 OFFICE OF PLANNING AND ZONING OF
 HOWARD COUNTY
James S. Harris 7-21-83
 PLANNING DIRECTOR DATE

REV. NO.	DATE	DESCRIPTION
1	7/13/83	As per Planning & DPW Comments

COLUMBIA
 VILLAGE OF HICKORY RIDGE
 SECTION 4
PRELIMINARY PLAN
 LOTS 424 THRU 600
 5TH ELECTION DISTRICT
 OF HOWARD COUNTY, MARYLAND
 COLUMBIA, MARYLAND 21044
 TAX MAP 35 PARCELS 87, 77 & 241 SCALE: 1"=100'
 DATE: FEBRUARY 21, 1983 SHEET 4 OF 4

OWNER AND DEVELOPER
 THE HOWARD RESEARCH & DEVELOPMENT CORP.
 THE ROUSE BUILDING
 COLUMBIA, MARYLAND 21044