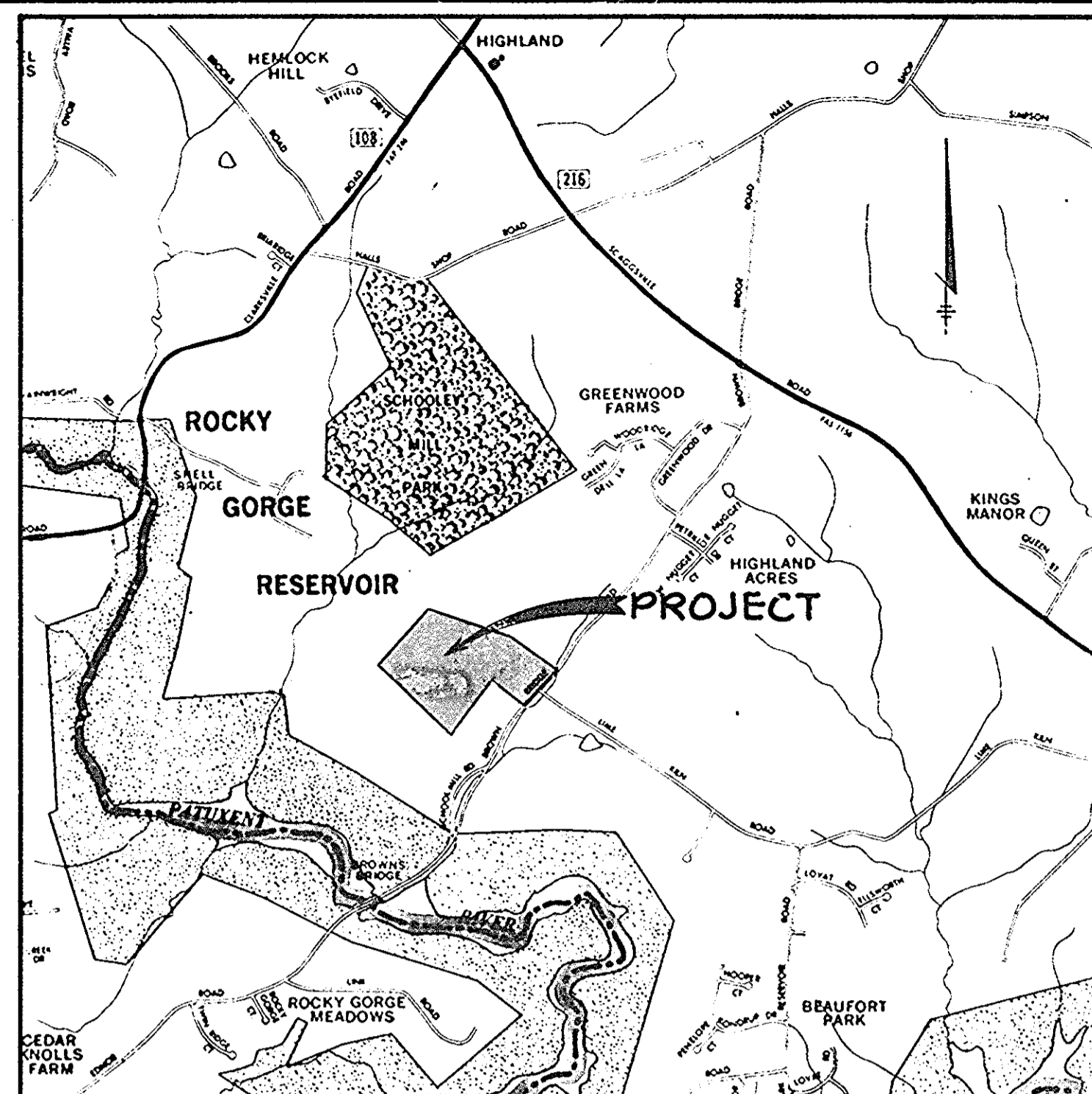
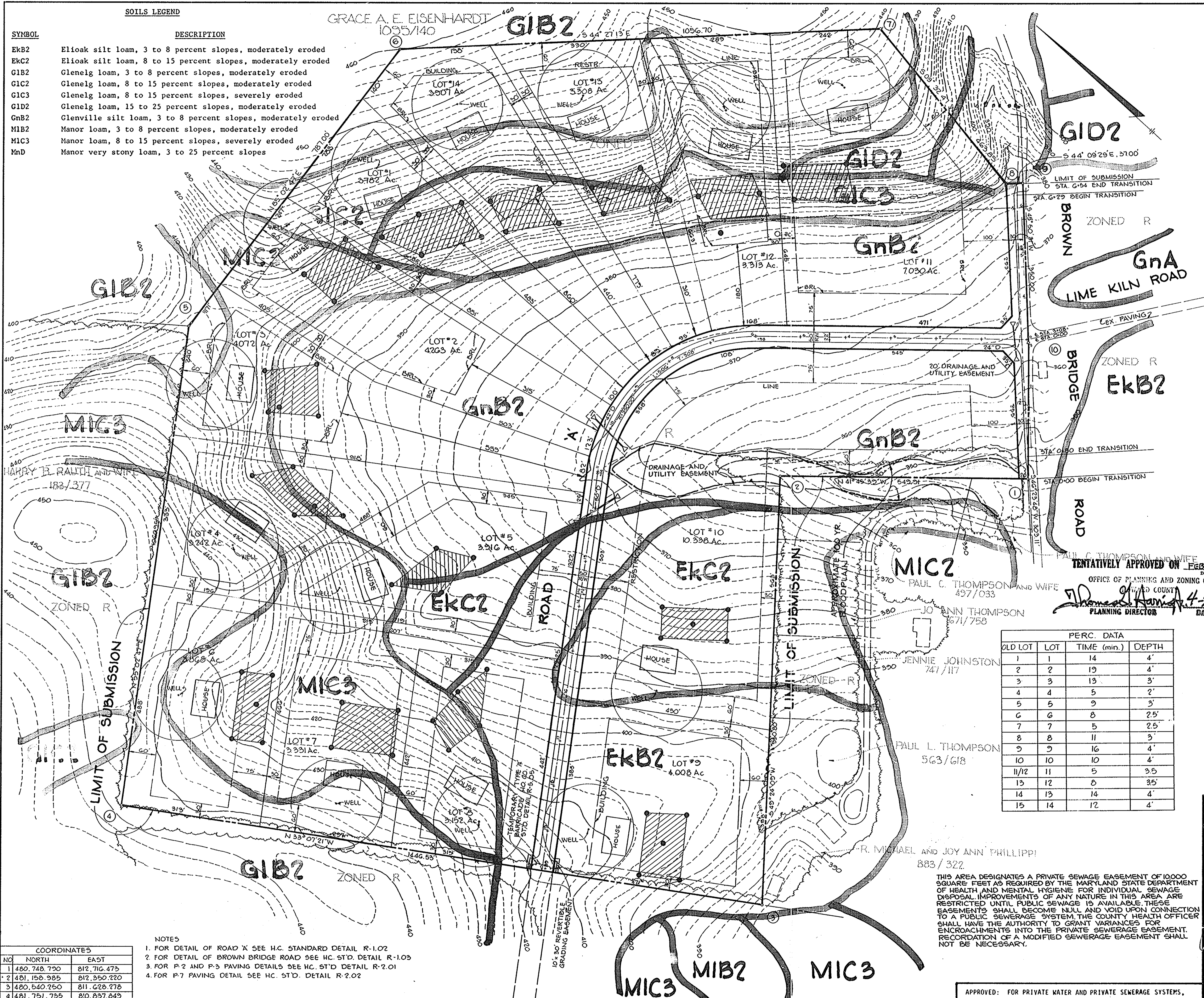


SOILS LEGEND

SYMBOL	DESCRIPTION
EkB2	Elioak silt loam, 3 to 8 percent slopes, moderately eroded
EKC2	Elioak silt loam, 8 to 15 percent slopes, moderately eroded
GIB2	Glenelg loam, 3 to 8 percent slopes, moderately eroded
GIC2	Glenelg loam, 8 to 15 percent slopes, moderately eroded
GIC3	Glenelg loam, 8 to 15 percent slopes, severely eroded
GID2	Glenelg loam, 15 to 25 percent slopes, moderately eroded
GnB2	Glenville silt loam, 3 to 8 percent slopes, moderately eroded
MIB2	Manor loam, 3 to 8 percent slopes, moderately eroded
MIC3	Manor loam, 8 to 15 percent slopes, severely eroded
MnD	Manor very stony loam, 3 to 25 percent slopes

GRACE A. E. EISENHARDT
1035/140



VICINITY MAP
SCALE: 1" = 2000'

SITE DATA

GROSS AREA	64.23 ACRES
FLOOD PLAIN	1.1 ACRES
STEEP SLOPES	0
SNMFA	0
NET AREA	63.13
NO. OF D.U. ALLOWED	21
FLOODPLAIN LOT ADJUSTMENT	0
TOTAL D.U. ALLOWED	21
TOTAL D.U. PROPOSED	14
DENSITY PER ACRE	0.2
OPEN SPACE	0
ROAD R.O.W.	2.7 ACRES

GENERAL NOTES

1. CONTOURS SHOWN HEREON ARE DERIVED FROM 1" = 200' COUNTY TOPOGRAPHY MAPS.
2. PRIVATE WATER AND SEWER SYSTEMS WILL BE PROVIDED IN ACCORDANCE WITH THE SPECIFICATIONS OF THE MARYLAND STATE DEPARTMENT OF HEALTH AND MENTAL HYGIENE.
3. SEDIMENT AND EROSION CONTROL DEVICES WILL BE PROVIDED IN ACCORDANCE WITH HOWARD SOIL CONSERVATION SERVICE REGULATIONS.
4. ● INDICATES LOCATION OF APPROVED PERC HOLES
5. SEE VARIANCE PETITION # VP-04-98

TENTATIVELY APPROVED ON FEB. 1, 1984
OFFICE OF PLANNING AND ZONING OF HOWARD COUNTY
PLANNING DIRECTOR

OLD LOT	LOT	PERC. DATA	
		TIME (min.)	DEPTH
1	1	14	4'
2	2	19	4'
3	3	13	3'
4	4	5	2'
5	5	9	3'
6	6	8	2.5'
7	7	5	2.5'
8	8	11	3'
9	9	16	4'
10	10	10	4'
11/12	11	5	3.5'
13	12	8	3.5'
14	13	14	4'
15	14	12	4'

- NOTES**
1. FOR DETAIL OF ROAD 'X' SEE H.C. STANDARD DETAIL R-1.02
 2. FOR DETAIL OF BROWN BRIDGE ROAD SEE H.C. STD. DETAIL R-1.03
 3. FOR P-2 AND P-3 PAVING DETAILS SEE H.C. STD. DETAIL R-2.01
 4. FOR P-7 PAVING DETAIL SEE H.C. STD. DETAIL R-2.02

COORDINATES

NO.	NORTH	EAST
1	480,748.790	812,716.473
2	481,158.985	812,350.220
3	480,540.250	811,628.778
4	481,751.725	810,837.845
5	482,355.967	811,707.421
6	482,441.197	812,430.176
7	481,686.305	813,230.219
8	481,228.202	813,161.286
9	481,201.657	813,187.062
10	480,957.833	812,353.565

THIS AREA DESIGNATES A PRIVATE SEWAGE EASEMENT OF 10,000 SQUARE FEET AS REQUIRED BY THE MARYLAND STATE DEPARTMENT OF HEALTH AND MENTAL HYGIENE FOR INDIVIDUAL SEWAGE DISPOSAL IMPROVEMENTS OF ANY NATURE IN THIS AREA ARE RESTRICTED UNTIL PUBLIC SEWAGE IS AVAILABLE. THESE EASEMENTS SHALL BECOME NULL AND VOID UPON CONNECTION TO A PUBLIC SEWAGE SYSTEM. THE COUNTY HEALTH OFFICER SHALL HAVE THE AUTHORITY TO GRANT VARIANCES FOR ENCROACHMENTS INTO THE PRIVATE SEWAGE EASEMENT. RECORDATION OF A MODIFIED SEWAGE EASEMENT SHALL NOT BE NECESSARY.

APPROVED: FOR PRIVATE WATER AND PRIVATE SEWAGE SYSTEMS,
HOWARD COUNTY HEALTH DEPARTMENT.

APPROVED: *James E. Green* 4-24-84
COUNTY HEALTH OFFICER DATE

PLAN
SCALE: 1" = 100'

NO.	DATE	REVISION

JAMES K. TRACY
REGISTERED PROFESSIONAL ENGINEER
RE. 9566

TRACY, SCHULTE & ASSOCIATES, INC.
planning - architecture - engineering
8450 Baltimore National Pike
Ellicott City, Maryland 21043
(301) 465-6105

OWNER: GRACE A. E. EISENHARDT JAMES DOLAN DAVID POLK & WARDWELL WEST 57th STREET NEW YORK, NEW YORK 10019	PROJECT: CHILDS PROPERTY SECTION ONE
DEVELOPER: SECURITY DEVELOPMENT CORP. 8450 BALTIMORE NATIONAL PIKE ELLICOTT CITY, MD. 21043	LOCATION: HOWARD COUNTY, MARYLAND 5th ELECTION DISTRICT TAX MAP 40 PARCEL 11G
PROJECT NO.: 0282 P	TITLE: PRELIMINARY PLAN AND SOILS MAP
DESIGNED BY: J.K.T.	SCALE: 1" = 100'
DATE: JANUARY 18, 1983	DRAWN BY: R.J.W.
	DRAWING: 1 OF 1