

SITE ANALYSIS:

- Zone: R-20
- Area Tabulation

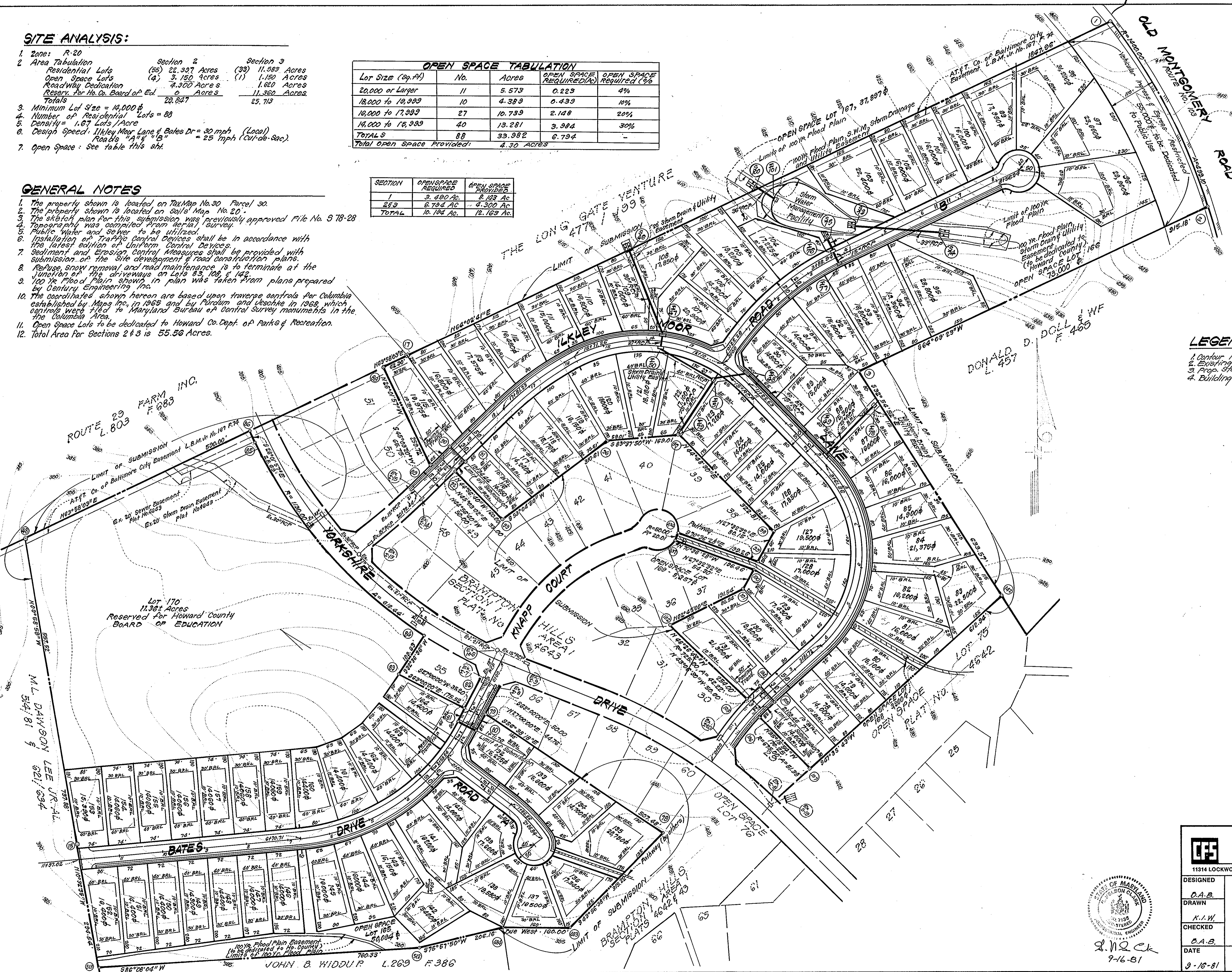
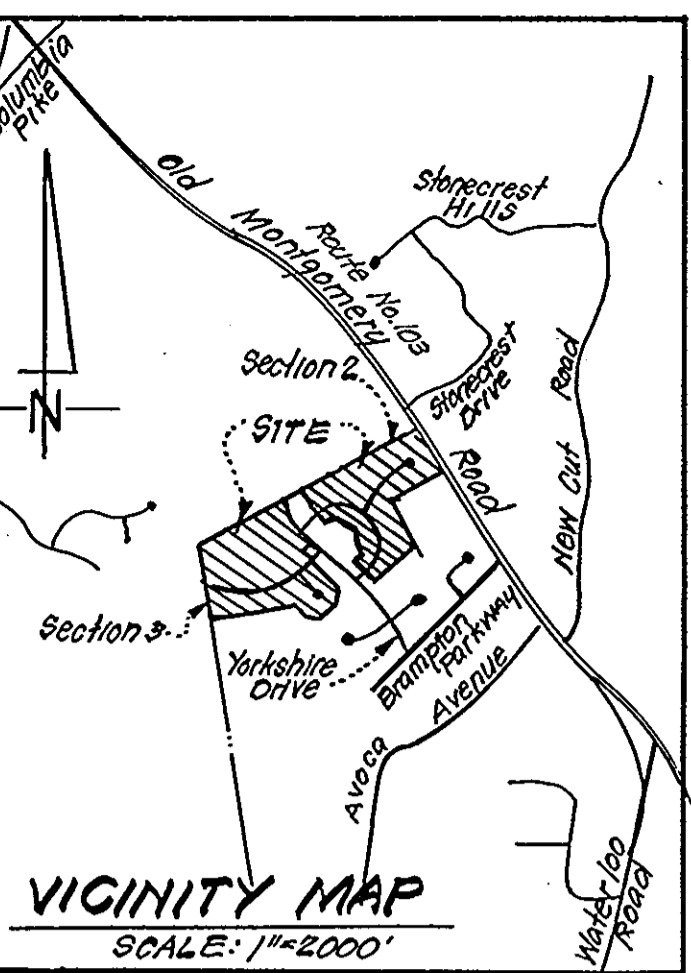
Section 1	Section 2	Section 3
Residential Lots (85) 22,327 Acres	(38) 11,583 Acres	(1) 1,150 Acres
Open Space Lots (4) 3,150 Acres		
Road/Utility Dedication 7,300 Acres		
Reserv. for Ho. Co. Board of Ed. 0 Acres	11,360 Acres	
Totals	20,847	25,713
- Minimum Lot Size = 14,000 sq ft
- Number of Residential Lots = 88
- Density = 1.67 Lots/Acre
- Design Speed: 11kley Moor Lane & Bates Dr = 30 mph (Local)
Roads "A" & "B" = 25 mph (Cul-de-Sac)
- Open Space: See table this sheet

Lot Size (sq. ft)	No.	Acres	OPEN SPACE REQUIRED (%)	OPEN SPACE REQUIRED (Ac)
20,000 or Larger	11	5.573	0.223	4%
18,000 to 19,999	10	4.389	0.439	10%
16,000 to 17,999	27	10.739	2.148	20%
14,000 to 15,999	40	13.281	3.394	30%
TOTALS	88	33.982	6.794	-
Total Open Space Provided:		4.30 Acres		

SECTION	OPENSAPCE REQUIRED	OPEN SPACE PROVIDED
1	3.400 Ac.	2.123 Ac.
2&3	6.784 Ac.	4.300 Ac.
TOTAL	10.184 Ac.	12.163 Ac.

GENERAL NOTES

- The property shown is located on Tax Map No. 30 Parcel 30.
- The property shown is located on soils Map No. 20.
- The sketch plan for this submission was previously approved File No. 3 78-28.
- Topography was compiled from aerial survey.
- Public Water and sewer to be utilized.
- Installation of Traffic Control Devices shall be in accordance with the latest edition of Uniform Control Devices.
- Sediment and Erosion Control Measures shall be provided with submission of the Site development & road construction plans.
- Refuse, snow removal and road maintenance is to terminate at the junction of the driveways on Lots 83, 108, & 142.
- 100 yr Flood Plain shown in plan was taken from plans prepared by Century Engineering Inc.
- The coordinates shown hereon are based upon traverse controls for Columbia established by Maps Inc. in 1965 and by Purdon and Vesohke in 1968, which controls were filed to Maryland Bureau of Control Survey monuments in the Columbia Area.
- Open Space Lots to be dedicated to Howard Co. Dept. of Parks & Recreation.
- Total Area for Sections 2 & 3 is 55.56 Acres.



LEGEND

- Contour Interval 5 FT
- Existing Contour
- Prop. Storm Drain
- Building Restriction Line 30' BRL

COORDINATE TABLE

No.	NORTH	EAST
1	514,275.29	854,895.01
2	513,837.68	855,123.50
3	513,438.75	854,305.81
4	512,458.43	853,523.44
5	513,438.85	853,176.32
6	513,205.91	853,190.91
7	512,251.96	853,337.44
8	513,216.57	853,372.76
9	513,193.26	853,342.41
10	513,080.01	853,262.44
11	513,266.53	853,710.77
12	513,235.34	853,378.74
13	513,056.32	854,106.23
14	512,985.26	854,069.17
15	512,967.50	854,069.91
16	512,919.35	854,034.80
17	512,831.66	853,864.52
18	512,656.64	854,044.60
19	512,686.37	854,678.56
20	512,649.87	854,176.73
21	512,613.36	854,178.53
22	512,493.58	854,197.53
23	512,906.88	854,650.14
24	513,061.42	853,881.21
25	513,092.73	853,874.59
26	512,336.96	853,848.75
27	512,616.03	853,424.30
28	512,576.19	853,464.58
29	512,538.85	853,560.02
30	512,630.22	853,376.01
31	512,709.90	853,219.62
32	512,802.25	853,278.70
33	513,258.18	852,872.30
34	513,283.96	852,859.73
35	513,025.18	852,322.59
36	512,298.31	852,457.50
37	512,110.00	853,690.00
38	512,110.00	853,470.00
39	512,050.00	853,270.00
40	512,008.74	852,511.40

TENTATIVELY APPROVED ON Oct 16, 1981

OFFICE OF PLANNING AND ZONING OF
HOWARD COUNTY
Thomas L. Hamilton 4-15-82
PLANNING DIRECTOR DATE

CLARK • FINEFROCK & SACKETT
ENGINEERS • PLANNERS • SURVEYORS
11314 LOCKWOOD DRIVE SILVER SPRING, MARYLAND 20904 (301) 593-3400

DESIGNED D.A.B.	PRELIMINARY PLAN LOTS 77-131 & 166-169 - SECTION 2 LOTS 132 THROUGH 170 - SECTION 3 BRAMPTON HILLS 2ND ELECTION DISTRICT HOWARD COUNTY, MARYLAND FOR: DELTA CORPORATION (OWNER) 10325 Lloyd Road Potomac, Maryland 20854	SCALE 1"=100'
DRAWN K.I.W.		DRAWING 10F1
CHECKED D.A.B.		JOB NO. 77-920
DATE 9-16-81		FILE NO. 77-920-F
SIGNED: <i>S. N. Clark</i> 9-16-81		

