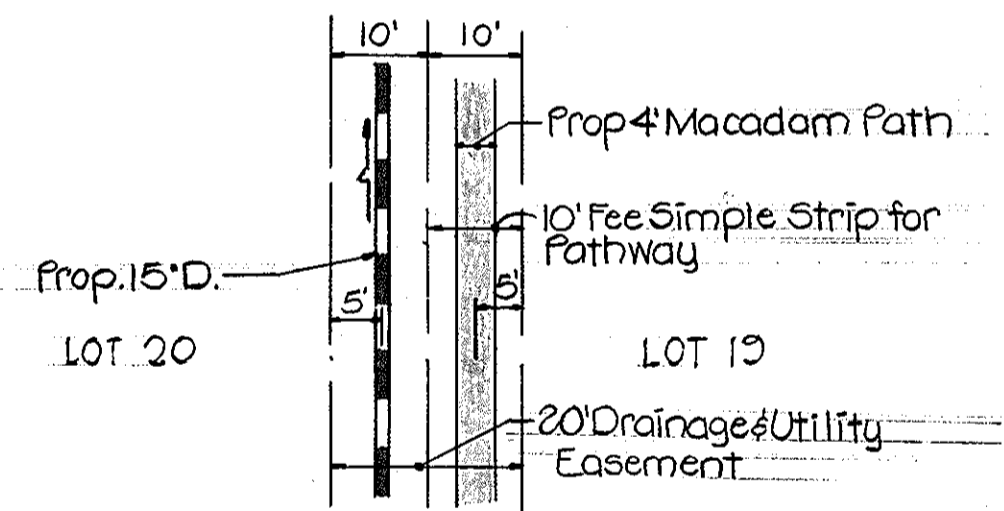
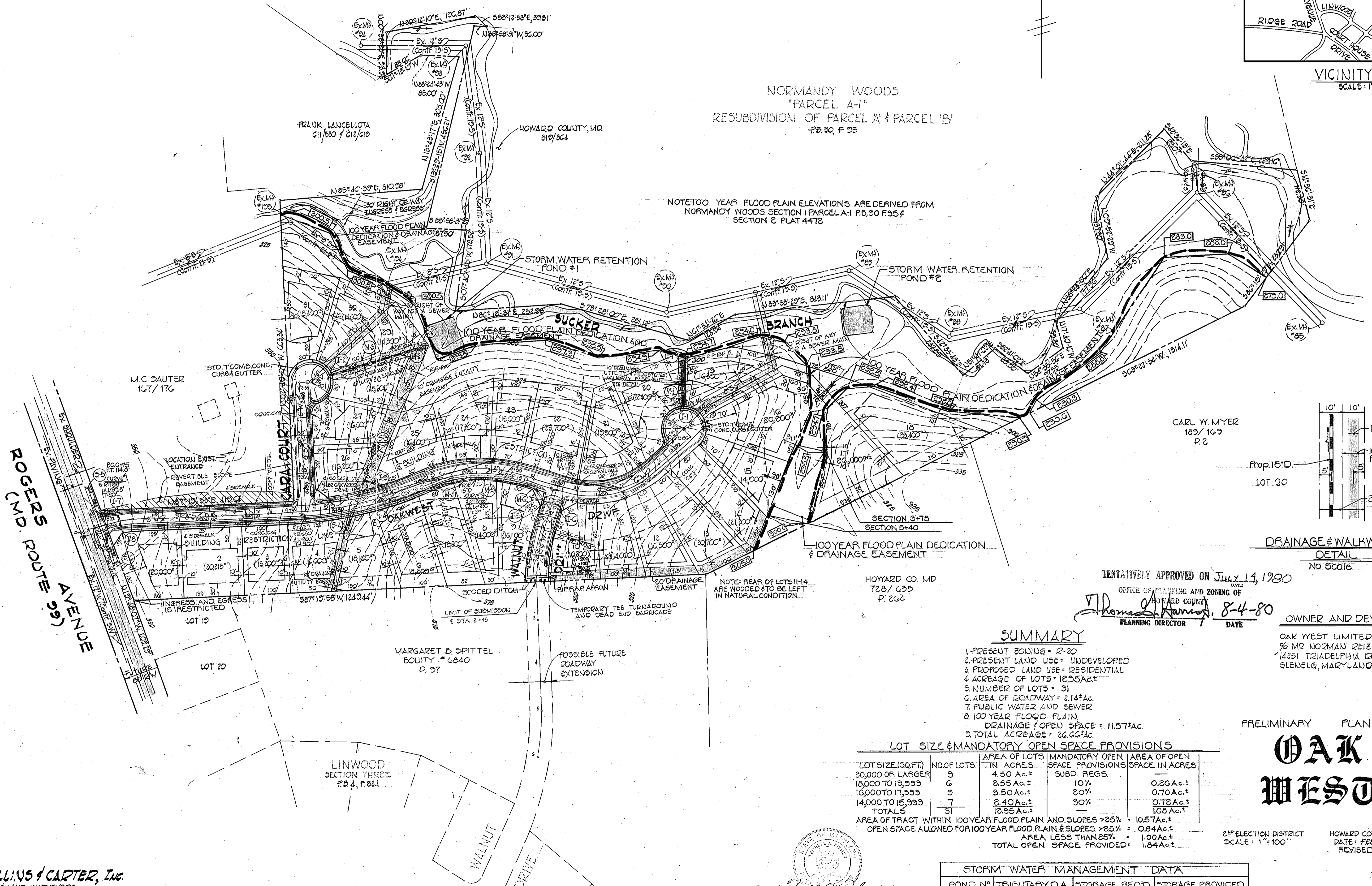


VICINITY MAP
SCALE: 1" = 800'

NORMANDY WOODS
"PARCEL A-1"
RESUBDIVISION OF PARCEL 'A' & PARCEL 'B'
P.B. 30, P. 35

NOTE: 100 YEAR FLOOD PLAIN ELEVATIONS ARE DERIVED FROM
NORMANDY WOODS SECTION 1 PARCEL A-1 P.B. 30 P. 35 &
SECTION 2 PLAT 4472



Drainage & Walkway Easement
DETAIL
No Scale

TENTATIVELY APPROVED ON July 14, 1980
DATE

OFFICE OF PLANNING AND ZONING OF
HOWARD COUNTY
PLANNING DIRECTOR
 Thomas A. Harris, 8-4-80
DATE

OWNER AND DEVELOPER

OAK WEST LIMITED PARTNERSHIP
% MR. NORMAN REIZEN
*14251 TRIADELPHIA ROAD
GLENELG, MARYLAND 21737

SUMMARY

1. PRESENT ZONING = R-20
2. PRESENT LAND USE = UNDEVELOPED
3. PROPOSED LAND USE = RESIDENTIAL
4. ACREAGE OF LOTS = 12.95 AC.
5. NUMBER OF LOTS = 31
6. AREA OF ROADWAY = 2.14 AC.
7. PUBLIC WATER AND SEWER
8. 100 YEAR FLOOD PLAIN DRAINAGE & OPEN SPACE = 11.57 AC.
9. TOTAL ACREAGE = 26.66 AC.

LOT SIZE & MANDATORY OPEN SPACE PROVISIONS

LOT SIZE (SQ. FT.)	NO. OF LOTS	AREA OF LOTS IN ACRES	MANDATORY OPEN SPACE PROVISIONS SUBD. REGS.	AREA OF OPEN SPACE IN ACRES
20,000 OR LARGER	9	4.50 AC.±	10%	0.20 AC.±
18,000 TO 19,999	6	2.55 AC.±	10%	0.20 AC.±
16,000 TO 17,999	9	3.50 AC.±	20%	0.70 AC.±
14,000 TO 15,999	7	2.40 AC.±	30%	0.72 AC.±
TOTALS	31	12.95 AC.±		1.68 AC.±

AREA OF TRACT WITHIN 100 YEAR FLOOD PLAIN AND SLOPES > 25% = 10.57 AC.±
OPEN SPACE ALLOWED FOR 100 YEAR FLOOD PLAIN & SLOPES > 25% = 0.84 AC.±
AREA LESS THAN 25% = 1.00 AC.±
TOTAL OPEN SPACE PROVIDED = 1.84 AC.±

PRELIMINARY PLAN

OAK WEST

2ND ELECTION DISTRICT
SCALE: 1" = 100'

HOWARD COUNTY, MARYLAND
DATE: FEBRUARY 20, 1979
REVISED MAY 21, 1980

STORM WATER MANAGEMENT DATA

POND NO.	TRIBUTARY D.A.	STORAGE REQ'D	STORAGE PROVIDED
1	8.7 AC.±	14,500 cu.ft.	14,500 cu.ft.
2	7.1 AC.±	11,850 cu.ft.	11,850 cu.ft.

FISHER, COLLINS & CARTER, Inc.
CIVIL ENGINEERS & LAND SURVEYORS
8338 COURT AVENUE
ELLICOTT CITY, MARYLAND 21043

TERRELL L. FISHER, P.E. #9757
2/29/80