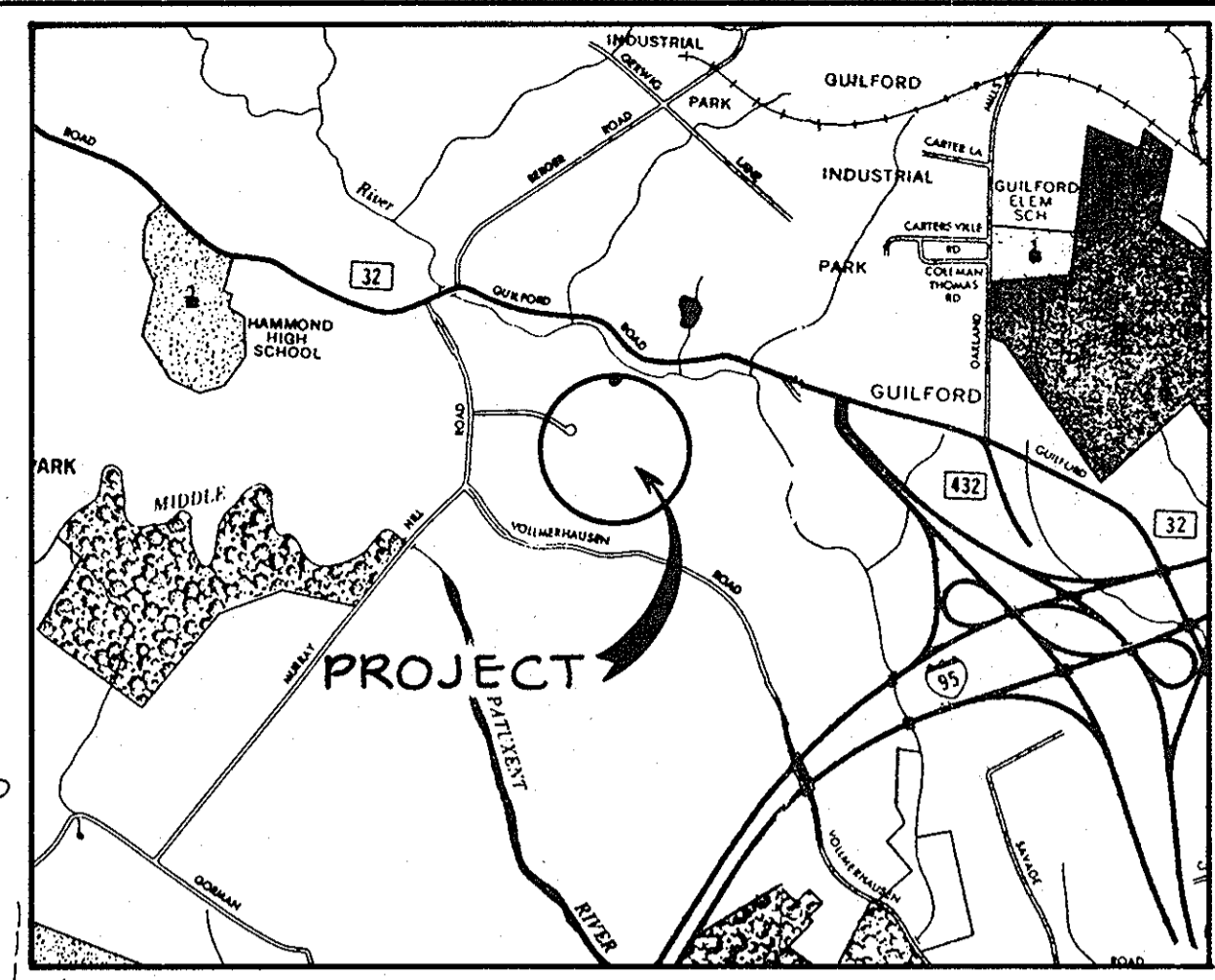


COORDINATES		
NO.	NORTH	EAST
1	484,394.00	844,092.76
64	484,071.10	843,427.48
66	484,321.99	843,427.48
67	483,904.60	844,092.76
68	484,095.00	844,250.00
69	484,625.90	844,315.00
70	484,810.00	844,129.99
71	484,525.00	843,659.00
72	484,419.43	843,447.88

NOTE:
STREET LIGHTS WILL BE PROVIDED IN THIS DEVELOPMENT IN ACCORDANCE WITH THE DESIGN MANUAL.

NOTE:
STORM WATER MANAGEMENT AND SEDIMENT CONTROL FOR THIS SITE PROVIDED IN EXISTING FACILITY (BUILT BY OTHERS) AS SHOWN ON THIS DRAWING.



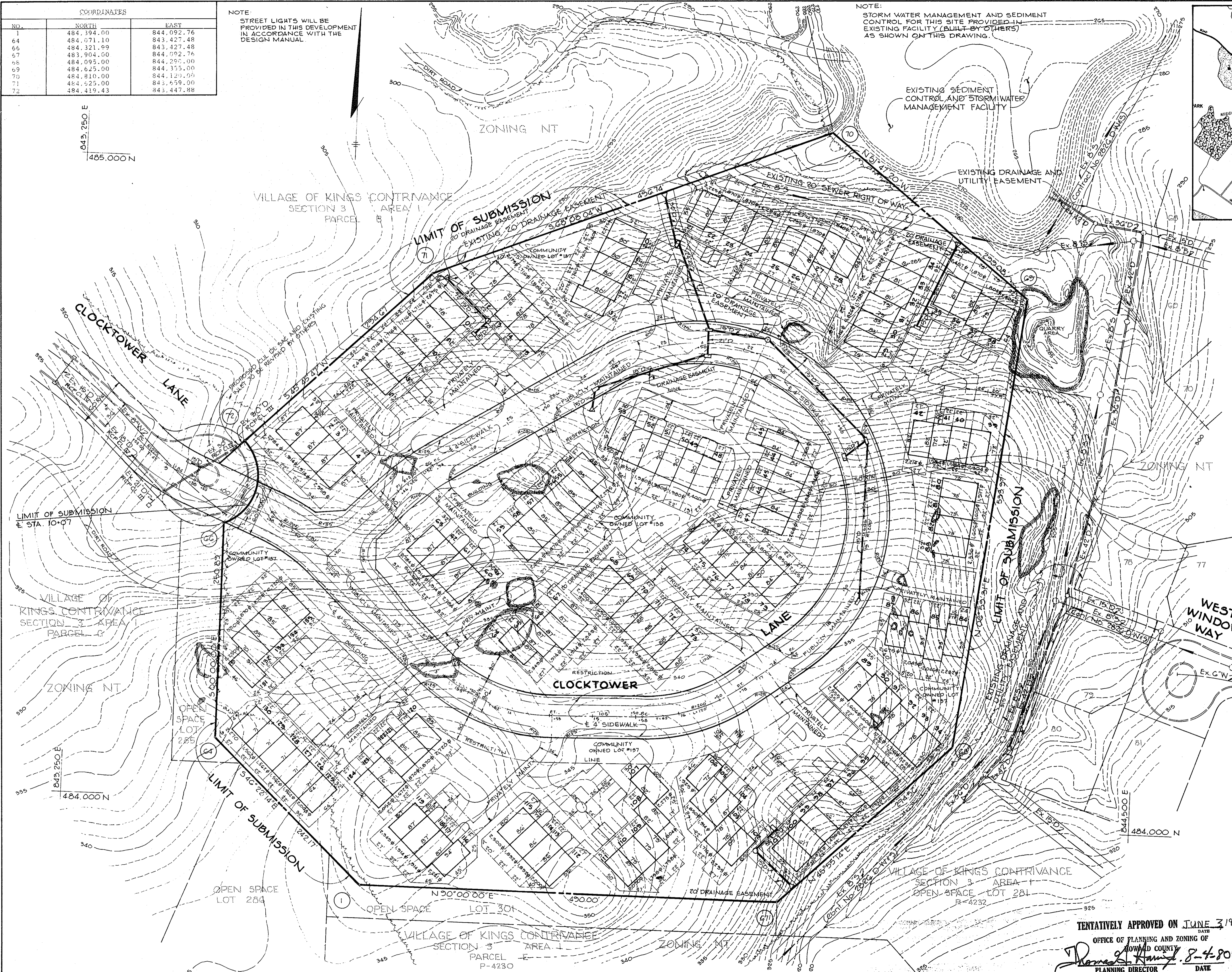
VICINITY MAP
Scale 1"=2000'

TABULATIONS	
ITEMS	TOTALS
NO. OF COMMUNITY OWNED LOTS	2
NO. OF RESIDENTIAL LOTS	134*
AREA OF RESIDENTIAL LOTS	6.160 AC.
AREA OF COMMUNITY OWNED LOTS	6.592 AC.
AREA OF PUBLIC ROADWAY	2.029 AC.
TOTAL OF SUBMISSION	14.721 AC.
PARKING SPACES REQUIRED	268
PARKING SPACES PROVIDED	271
ZONING	NH TOWN

* LOT NUMBER 80 HAS BEEN DELETED
FINAL PLATS WILL HAVE LOTS NUMBERED CONSECUTIVELY

NOTES:

- All lot numbers shown hereon are preceded by the letter 'D' and shall be so designated on the Final Plans and Plats.
- Minimum width in Community Owned Lots is 5 feet.
- Lines shown thusly are lot lines and shall be shown as continuous lines on the Final Plans and Plats.
- All roadways are provided with concrete curb and gutter, see Details Drawing No. 2 of 3.

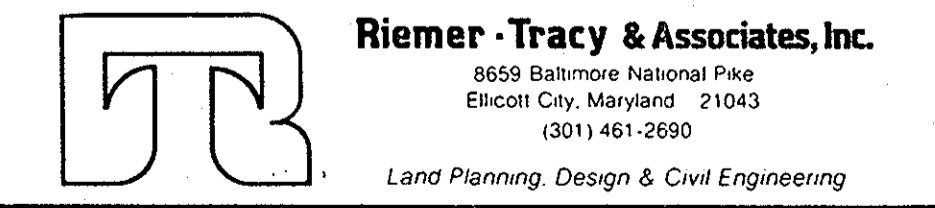


5-19-80	REVIS	AS PER H.C. COMMENTS DATED 4-7-80
9-27-80	REVIS	AS PER H.C. COMMENTS DATED 2-25-80
DATE	NO.	REVISION

OWNER/DEVELOPER
CHESAPEAKE HOMES INC.
7133 RUTHERFORD ROAD
BALTIMORE, MARYLAND 21207

PROJECT-VILLAGE OF KINGS CONTRIVANCE
SECTION 3, AREA 1
PARCEL D
AREA TAX MAP NO. 42
6TH ELECTION DISTRICT
HOWARD COUNTY, MARYLAND

TITLE: PRELIMINARY PLAN



1-23-80
DATE
DESIGNED BY: JKT
DRAWN BY: RJW
PROJECT NO: 1879
DATE: 1-23-80
SCALE: 1"=50'
DRAWING NO. 1 OF 1

TENTATIVELY APPROVED ON JUNE 3, 1980
OFFICE OF PLANNING AND ZONING OF
HOWARD COUNTY
DATE
PLANNING DIRECTOR

