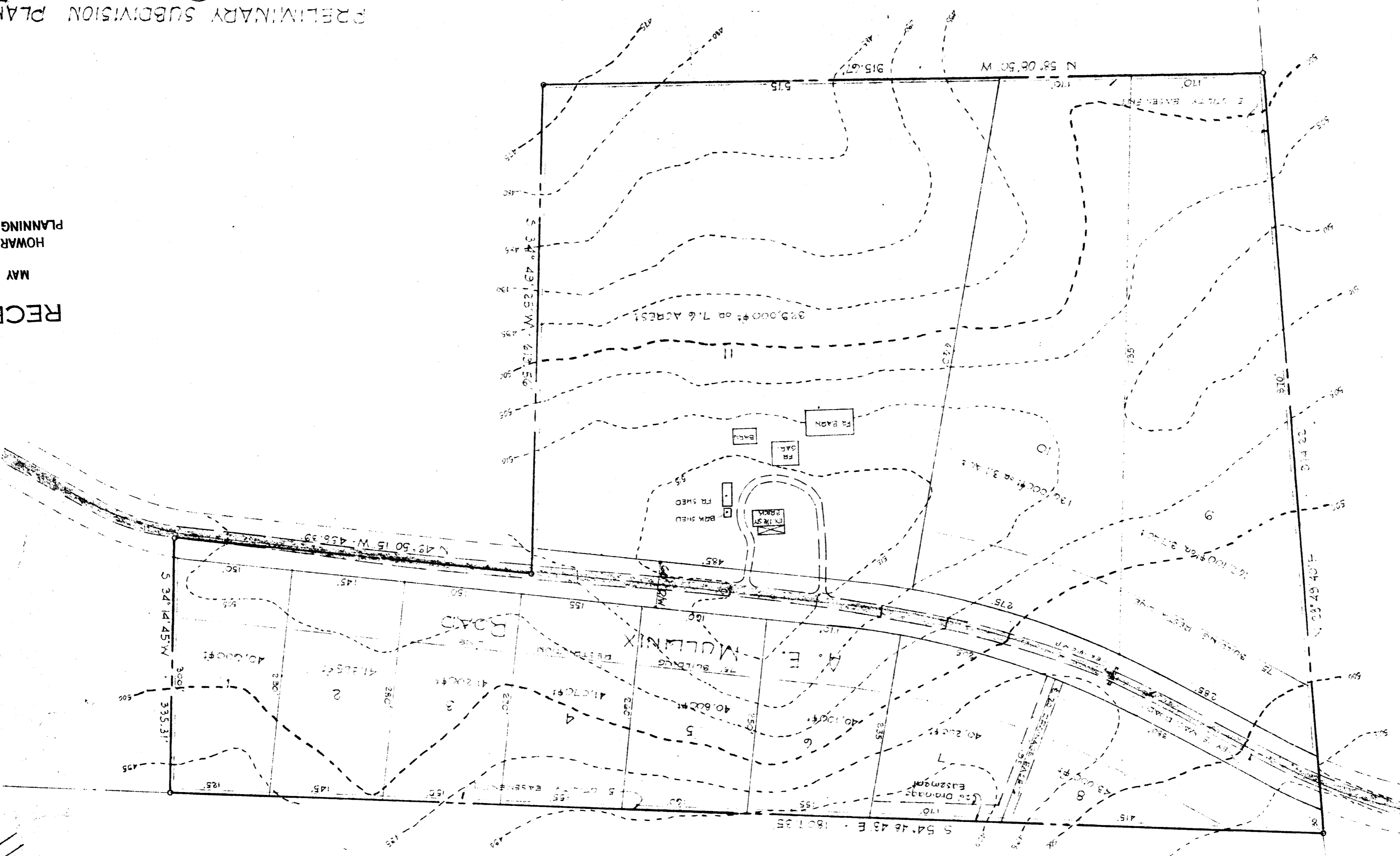
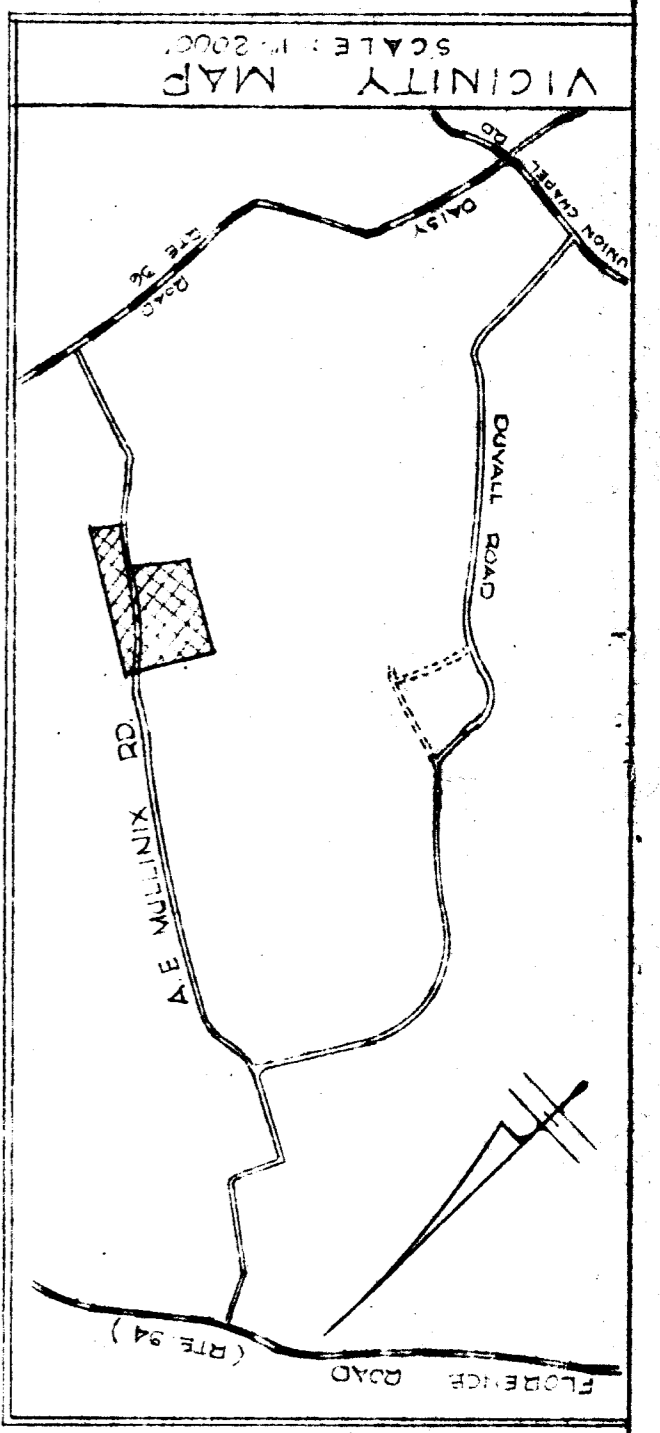


~~FSP. 177~~
256

GENERAL NOTES:
1. ZONED - R-40
2. TOTAL NO. LOTS - 11
3. TOTAL AREA SHOWN - 24.5 ACRES (SCALED)
4. CONTOURS SHOWN FROM ASSUMED DATUM

PRELIMINARY SUBDIVISION PLAN
ORAL G. BEE PROP.
4TH ELECTION DISTRICT - HOWARD COUNTY - MD.
APRIL 30, 1963
SCALE: 1"=100'

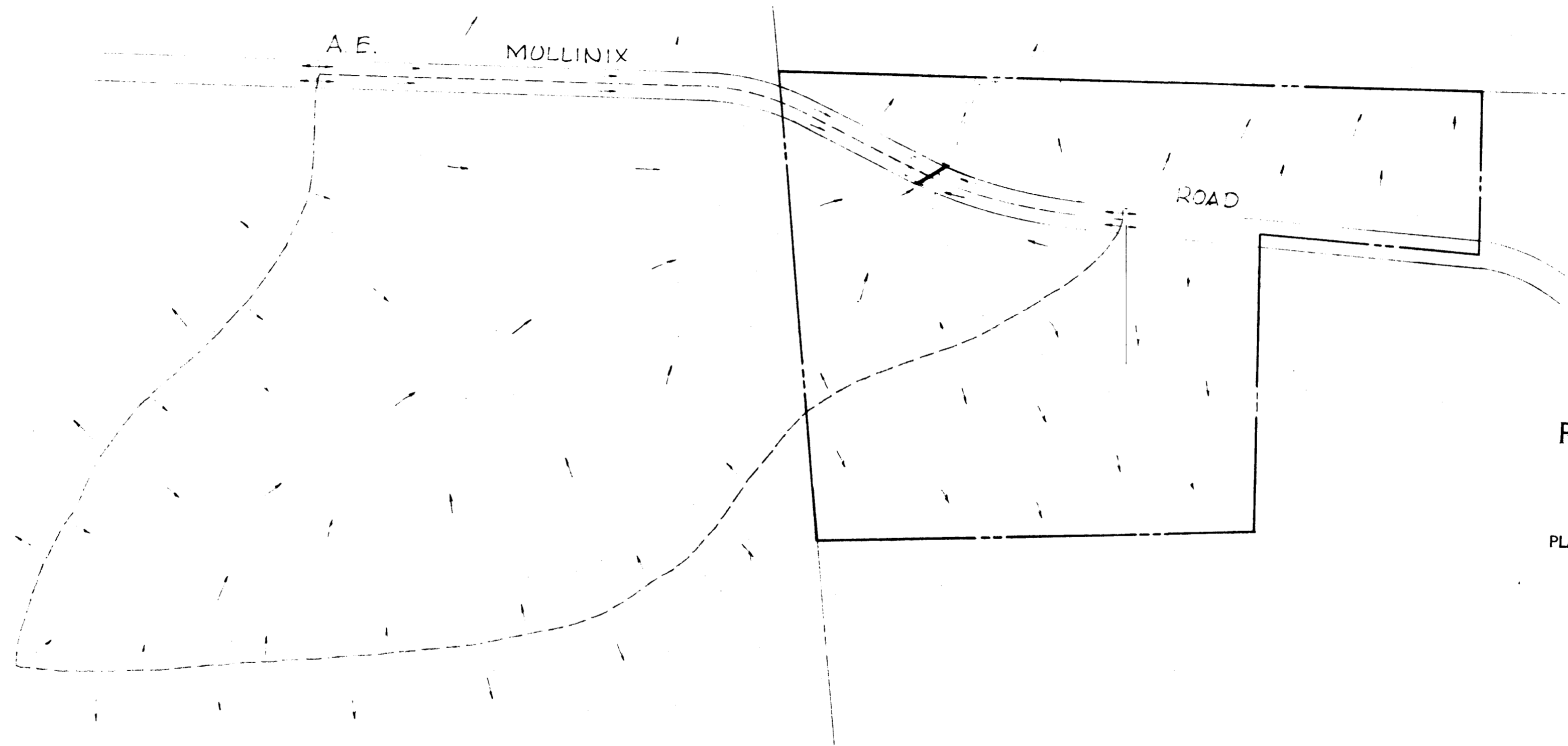
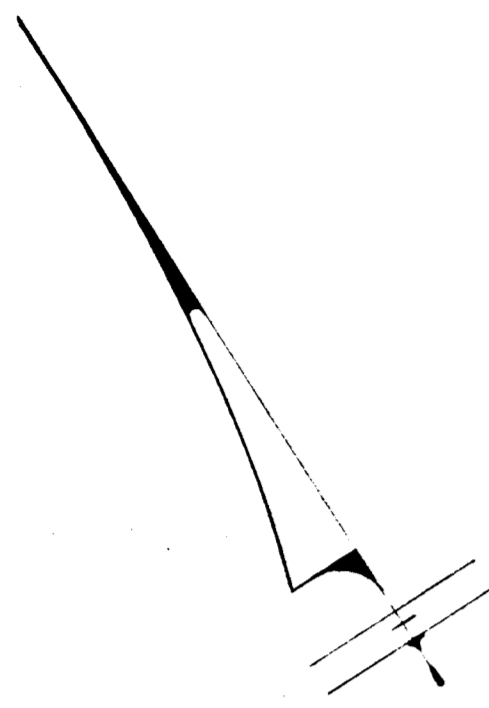
RECEIVED
MAY 8 1963
HOWARD COUNTY
PLANNING COMMISSION



F.S.P. 177

FSP. 2

Dr



RECEIVED
MAY 8 1963
HOWARD COUNTY
PLANNING COMMISSION

PREL. DRAINAGE AREA MAP
URAL G. BEE Prop.
4th. ELECTION DISTRICT • HOWARD COUNTY • MD.
MAY 8, 1963 SCALE: 1"=200'

PURDUM & JESCHKE
ENGINEERS
24 PARK AVENUE • ELLICOTT CITY • MD.

PS-055.3