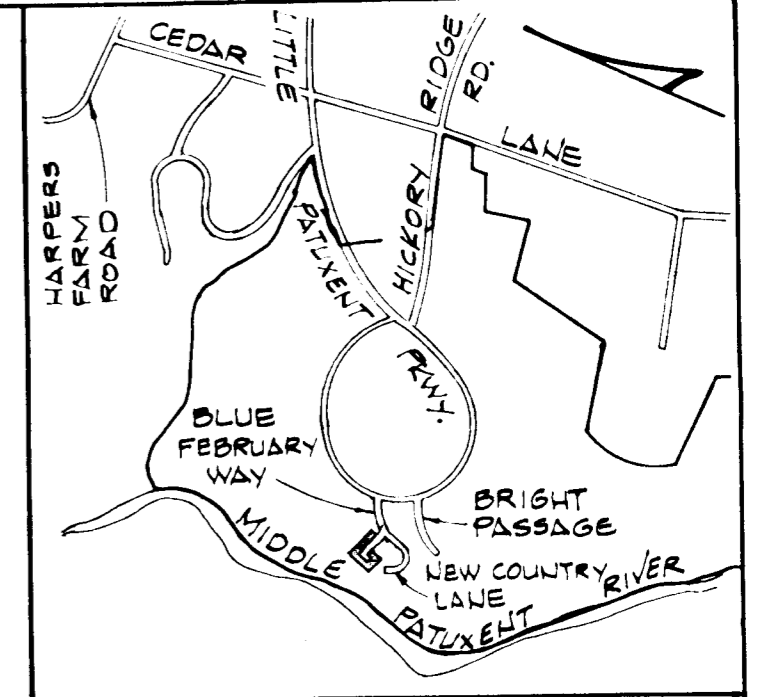
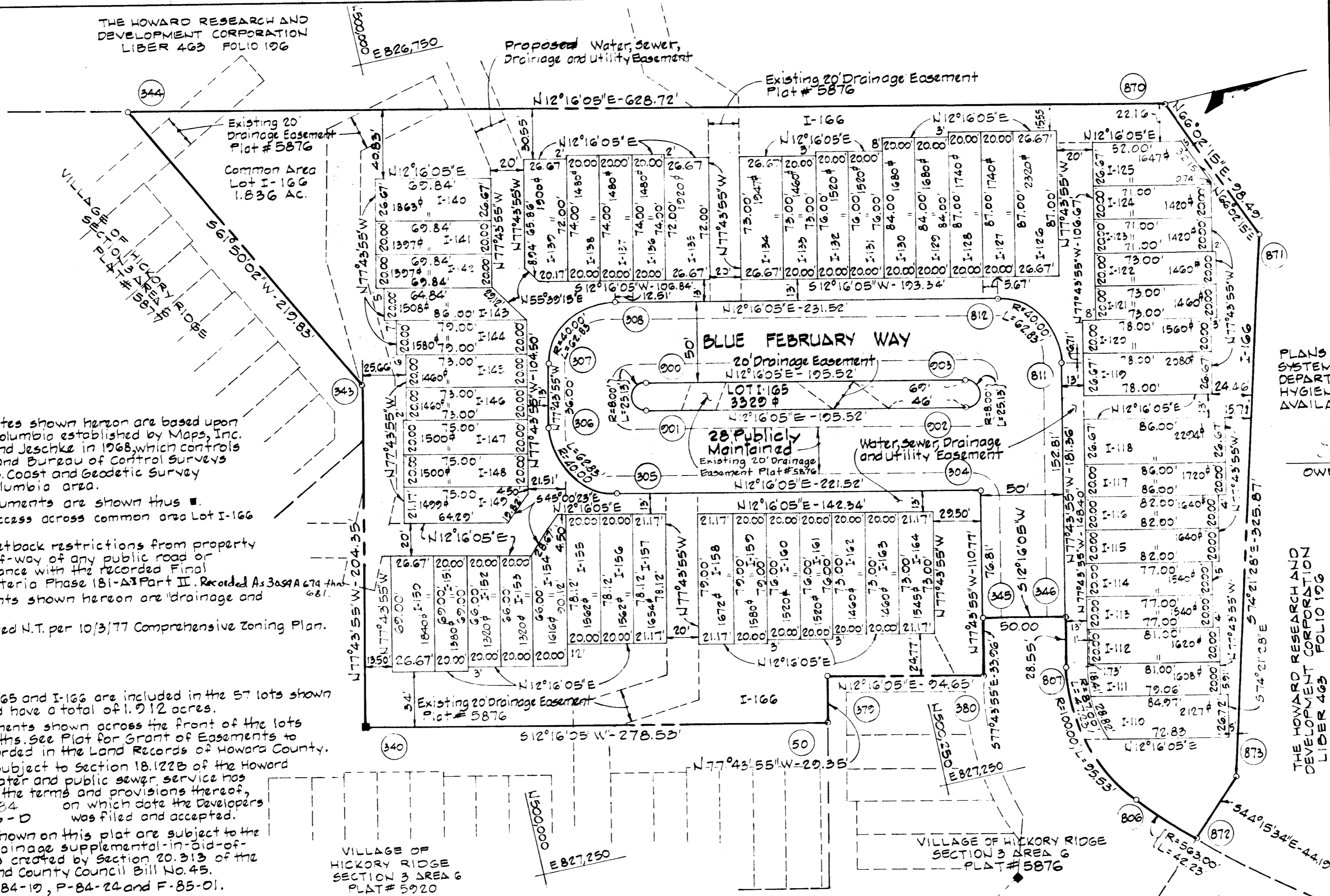


**LEGEND**

- I-5 - Lot Number
- 343 - Coordinate Number

THE HOWARD RESEARCH AND DEVELOPMENT CORPORATION  
LIBER 463 FOLIO 196



**VICINITY MAP**

Scale: 1" = 2,000'

PLANS FOR PUBLIC WATER AND PUBLIC SEWERAGE SYSTEMS HAVE BEEN APPROVED BY THE DEPARTMENT OF HEALTH AND MENTAL HYGIENE AND THESE FACILITIES WILL BE AVAILABLE TO ALL LOTS OFFERED FOR SALE.

OWNER: \_\_\_\_\_ DATE: 6-20-84

THE HOWARD RESEARCH AND DEVELOPMENT CORPORATION  
LIBER 463 FOLIO 196

**NOTES:**

- This plat and coordinates shown hereon are based upon traverse controls for Columbia established by Maps, Inc. in 1965 and Purdum and Jeschke in 1968, which controls were tied to the Maryland Bureau of Control Surveys monuments and to U.S. Coast and Geodetic Survey monuments in the Columbia area.
- 4'x4'x36" concrete monuments are shown thus ■.
- S.F.A. lots shall have access across common area Lot I-166 to public street.
- Minimum building setback restrictions from property lines and the right-of-way of any public road or street to be in accordance with the recorded Final Development Plan Criteria Phase (B)-A Part II. Recorded As 3059A 674 th. 681.
- The "drainage" easements shown hereon are "drainage and utility" easements.
- Subject property zoned N.T. per 10/3/77 Comprehensive Zoning Plan.
- Common area Lots I-165 and I-166 are included in the 57 lots shown in the tabulation and have a total of 1.012 acres.
- Water and sewer easements shown across the front of the lots are of varying widths. See Plat for Grant of Easements to Howard County recorded in the Land Records of Howard County.
- This subdivision is subject to Section 18.122B of the Howard County Code. Public water and public sewer service has been granted under the terms and provisions thereof, effective on 10-4-84 on which date the Developers Agreement 34-1266-D was filed and accepted.
- The lots or parcels shown on this plat are subject to the Middle Patuxent drainage supplemental-in-aid-of-construction charges created by Section 20.313 of the Howard County Code and County Council Bill No. 45.
- See OP#Z File Nos. S-84-10, P-84-24 and F-85-01.

\* See Note # 7

**TABULATION**

Total number of lots and parcels to be recorded.	57*
Total area of lots and parcels to be recorded.	3.951 Ac.
Total area of roadway to be recorded.	0.818 Ac.
Total area of subdivision to be recorded.	4.769 Ac.

**CURVE DATA**

NO.	RADIUS	Δ	ARC	TANGENT	CHORD	CRD. BRG.
305-306	40.00	90°00'00"	62.83	40.00	56.57	N 57°16'05"E
307-308	40.00	90°00'00"	62.83	40.00	56.57	S 32°43'55"E
806-807	100.00	54°43'58"	95.53	51.76	91.94	N 74°54'06"E
806-872	563.00	04°17'50"	42.23	21.12	42.22	S 45°22'48"W
811-872	40.00	90°00'00"	62.83	40.00	56.57	E 57°16'05"W

**COORDINATE SCHEDULE**

NO.	NORTH	EAST
50	500186.16	827107.07
304	500310.42	827082.26
305	500073.06	827033.19
306	500063.37	826987.60
307	500071.02	826952.42
308	500118.61	826921.83
340	499215.29	827132.88
343	499252.41	826940.21
344	499855.64	826746.41
345	500294.10	827157.31
346	500342.96	827167.94
379	500124.40	827170.39
380	500286.88	827190.30
806	500360.84	827284.59
807	500336.89	827195.83
811	500375.43	827018.62
812	500344.84	826971.03
870	500470.00	826880.00
871	500510.00	826970.00
872	500390.49	827314.64
873	500422.14	827283.80
900	500125.57	826974.52
901	500122.17	826990.15
902	500313.23	827031.70
903	500316.63	827016.06

APPROVED: FOR PUBLIC WATER AND PUBLIC SEWERAGE SYSTEMS IN CONFORMANCE WITH THE MASTER PLAN OF WATER AND SEWERAGE FOR HOWARD COUNTY.

*Joseph Boyles* 10-30-84  
COUNTY HEALTH OFFICER DATE

APPROVED: HOWARD COUNTY OFFICE OF PLANNING AND ZONING.

\_\_\_\_\_  
DIRECTOR DATE

APPROVED: FOR PUBLIC WATER AND PUBLIC SEWERAGE STORM DRAINAGE SYSTEMS AND PUBLIC ROADS HOWARD COUNTY DEPARTMENT OF PUBLIC WORKS.

\_\_\_\_\_  
DIRECTOR DATE

**OWNER'S CERTIFICATE**

WE, HOWARD HOMES BUILDING CO., INC., A MARYLAND CORPORATION BY LEE B. ROSENBERG, PRESIDENT, AND SEYMOUR FRAPHAEL VICE-PRESIDENT, OWNER OF THE PROPERTY SHOWN AND DESCRIBED HEREON. HEREBY ADOPT THIS PLAN OF SUBDIVISION AND IN THE CONSIDERATION OF THE APPROVAL OF THIS FINAL PLAT BY THE OFFICE OF PLANNING AND ZONING, ESTABLISH THE MINIMUM BUILDING RESTRICTION LINES AND GRANT UNTO HOWARD COUNTY MARYLAND, ITS SUCCESSORS AND ASSIGNS (1) THE RIGHT TO LAY, CONSTRUCT AND MAINTAIN SEWERS, DRAINS, WATER PIPES AND OTHER MUNICIPAL UTILITIES AND SERVICES. IN AND UNDER ALL ROADS AND STREET RIGHT-OF-WAYS AND THE SPECIFIC EASEMENT AREAS SHOWN HEREON; (2) THE RIGHT TO REQUIRE DEDICATION FOR PUBLIC USE THE BEDS OF THE STREETS AND/OR ROADS, AND FLOODPLAINS AND OPEN SPACE WHERE APPLICABLE AND FOR GOOD AND OTHER VALUABLE CONSIDERATION, HEREBY GRANT THE RIGHT AND OPTION TO HOWARD COUNTY TO ACQUIRE THE FEE SIMPLE TITLE TO THE BEDS OF THE STREETS AND/OR ROADS AND FLOODPLAINS, STORM DRAINAGE FACILITIES AND OPEN SPACE WHERE APPLICABLE; AND (3) THE RIGHT TO REQUIRE DEDICATION OF WATERWAYS AND DRAINAGE EASEMENTS FOR THE SPECIFIC PURPOSE OF THEIR CONSTRUCTION, REPAIR AND MAINTENANCE; AND (4) THAT NO BUILDING OR SIMILAR STRUCTURE OF ANY KIND SHALL BE ERRECTED ON OR OVER THE SAID EASEMENTS AND RIGHT-OF-WAYS.

WITNESS OUR HANDS THIS 20th DAY OF June 1984.

BY: \_\_\_\_\_ ATTEST: \_\_\_\_\_  
HOWARD HOMES BUILDING CO., INC. P.O. BOX 802, COLUMBIA, MARYLAND 21044

**SURVEYOR'S CERTIFICATE**

I HEREBY CERTIFY THAT THE FINAL PLAT SHOWN HEREON IS CORRECT: THAT IT IS A SUBDIVISION OF A PART OF THE LAND CONVEYED BY HOWARD RESEARCH AND DEVELOPMENT CORPORATION TO HOWARD HOMES BUILDING CO., INC. BY DEED DATED 7/27/84 RECORDED IN LIBER 1271 FOLIO 250 AND THAT ALL MONUMENTS ARE IN PLACE OR WILL BE IN PLACE PRIOR TO THE ACCEPTANCE OF THE STREETS IN THE SUBDIVISION BY HOWARD COUNTY, AS SHOWN IN ACCORDANCE WITH THE ANNOTATED CODE OF MARYLAND, AS AMENDED.

DATE: \_\_\_\_\_ REGISTERED LAND SURVEYOR NO. 1974

RECORDED AS PLAT **5993**

ON **11-2-84** AMONG THE

LAND RECORDS OF HOWARD COUNTY, MARYLAND

**COLUMBIA**  
VILLAGE OF HICKORY RIDGE  
SECTION 3 AREA 6  
LOTS I-110 THRU I-166  
A RESUBDIVISION OF LOT I-59

SHEET 1 OF 1 TAX MAP NO. 35  
5th ELECTION DISTRICT OF HOWARD COUNTY, MD.

SCALE: 1" = 50' DATE: March 6, 1984

42

F-85-01