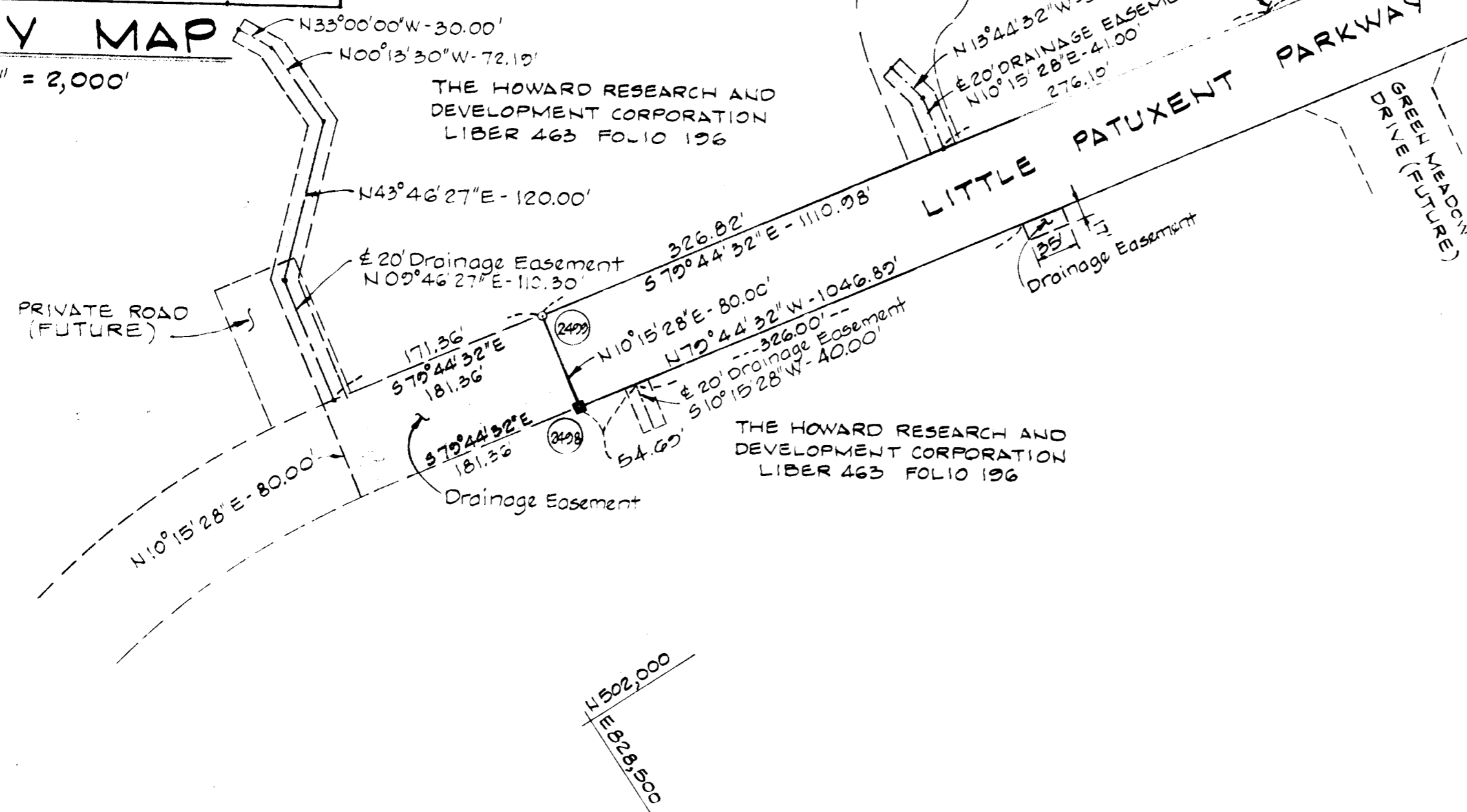


COORDINATES		
NO.	NORTH	EAST
52	501 874.65	830001.70
2498	502 217.16	828331.14
2499	502 295.88	828645.39
700	502 030.74	829661.30
860	501 929.49	829911.04
861	501 971.61	829831.81
881	501 957.12	830058.18
882	502 017.79	829957.97
883	502 029.87	829935.25
884	502 098.05	829738.62

VICINITY MAP

Scale: 1" = 2,000'



NOTES:

1. This plat and coordinates shown hereon are based upon traverse controls for Columbia established by Maps, Inc. in 1965 and Purdum and Jeschke in 1968, which controls were tied to the Maryland Bureau of Control Surveys monuments and to U.S. Coast and Geodetic Survey monuments in the Columbia area.
2. 4"x4"x3/8" concrete monuments are shown thus ■.
3. Subject property zoned New Town per 10/3/77 Comprehensive Plan.
4. This subdivision is not subject to Section 18.122B of the Howard County Code. No public water or public sewer service is needed for the road right-of-way in this subdivision.
5. The "drainage" easements shown hereon are "drainage and utility" easements.
6. Vehicular Ingress and Egress to Little Patuxent Parkway will be permitted only at points of access approved by the Howard County Office of Planning and Zoning.

CURVE DATA						
NO.	RADIUS	Δ	ARC	TANGENT	CHORD	CRD BRG.
884-883	674.98	17°44'12"	208.95	105.32	208.11	S70°52'42"E
700-861	585.31	17°44'11"	181.19	91.32	180.46	N70°52'27"W
882-881	1050.00	26°23'44"	117.20	58.66	117.14	S58°48'29"E
860-52	950.00	26°23'44"	106.04	53.08	105.99	N58°48'29"W

TABULATION

Total number of lots to be recorded 0
 Total area of lots to be recorded 0 Ac.
 Total area of roadway to be recorded 2.774Ac.
 Total area of subdivision to be recorded 2.774Ac.

APPROVED: HOWARD COUNTY HEALTH DEPARTMENT

Joseph M. Boyles 11-29-83
 COUNTY HEALTH OFFICER DATE

APPROVED: HOWARD COUNTY OFFICE OF PLANNING AND ZONING

William E. Williams 11-30-83
 DIRECTOR DATE

APPROVED: FOR STORM DRAINAGE SYSTEMS AND PUBLIC ROADS.
 HOWARD COUNTY DEPARTMENT OF PUBLIC WORKS

William E. Williams 11-31-83
 DIRECTOR DATE

OWNER'S CERTIFICATE

WE, THE HOWARD RESEARCH AND DEVELOPMENT CORPORATION, A MARYLAND CORPORATION BY WALTER E. WOODFORD, JR., VICE-PRESIDENT, AND JOHN HARRIS GURLEY, ASSISTANT SECRETARY, OWNER OF THE PROPERTY SHOWN AND DESCRIBED HEREON, HEREBY ADOPT THIS PLAN OF SUBDIVISION AND IN THE CONSIDERATION OF THE APPROVAL OF THIS FINAL PLAT BY THE OFFICE OF PLANNING AND ZONING, ESTABLISH THE MINIMUM BUILDING RESTRICTION LINES AND GRANT UNTO HOWARD COUNTY MARYLAND, ITS SUCCESSORS AND ASSIGNS (1) THE RIGHT TO LAY, CONSTRUCT AND MAINTAIN SEWERS, DRAINS, WATER PIPES AND OTHER MUNICIPAL UTILITIES AND SERVICES, IN AND UNDER ALL ROADS AND STREET RIGHT-OF-WAYS AND THE SPECIFIC EASEMENT AREAS SHOWN HEREON; (2) THE RIGHT TO REQUIRE DEDICATION FOR PUBLIC USE THE BEDS OF THE STREETS AND/OR ROADS, AND FLOODPLAINS AND OPEN SPACE WHERE THE FREE SIMPLE TITLE TO THE BEDS OF THE STREETS AND/OR ROADS AND FLOODPLAINS, STORM DRAINAGE FACILITIES AND OPEN SPACE WHERE APPLICABLE; AND (3) THE RIGHT TO REQUIRE DEDICATION OF WATERWAYS AND DRAINAGE EASEMENTS FOR THE SPECIFIC PURPOSE OF THEIR CONSTRUCTION, REPAIR AND MAINTENANCE; AND (4) THAT NO BUILDING OR SIMILAR STRUCTURE OF ANY KIND SHALL BE ERRECTED ON OR OVER THE SAID EASEMENTS AND RIGHT-OF-WAYS.

WITNESS OUR HANDS THIS June 27, 1983 DAY OF June 27, 1983 1983.

BY: *Walter E. Woodford, Jr.* ATTEST: *John Harris Gurley*
 HOWARD RESEARCH AND DEVELOPMENT CORPORATION 1075 LITTLE PATUXENT PARKWAY, COLUMBIA, MARYLAND 21046

SURVEYOR'S CERTIFICATE

I HEREBY CERTIFY THAT THE FINAL PLAT SHOWN HEREON IS CORRECT; THAT IT IS A SUBDIVISION OF A PART OF THE LAND CONVEYED BY CATILEEN AMES, TO THE HOWARD RESEARCH AND DEVELOPMENT CORPORATION BY DEED DATED DEC. 13, 1966 AND RECORDED IN LIBER 463 FOLIO 196 AND THAT ALL MONUMENTS ARE IN PLACE OR WILL BE IN PLACE PRIOR TO THE ACCEPTANCE OF THE STREETS IN THE SUBDIVISION BY HOWARD COUNTY, AS SHOWN IN ACCORDANCE WITH THE ANNOTATED CODE OF MARYLAND, AS AMENDED.

DATE: _____ REGISTERED LAND SURVEYOR NO. 1974

RECORDED AS PLAT 54-12
 ON 11-30-83 AMONG THE
 LAND RECORDS OF HOWARD COUNTY, MARYLAND

COLUMBIA
 VILLAGE OF HICKORY RIDGE
 SECTION 3 AREA 3

SHEET 1 OF 1 TAX MAP NO. 35
 5TH ELECTION DISTRICT OF HOWARD COUNTY, MO.
 SCALE: 1" = 100' DATE: September 22, 1983

#42