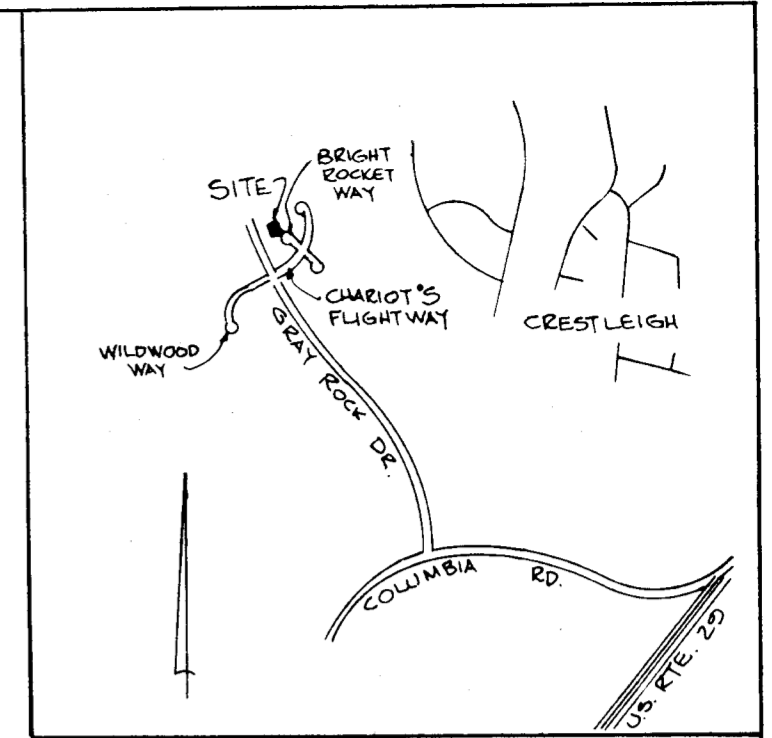


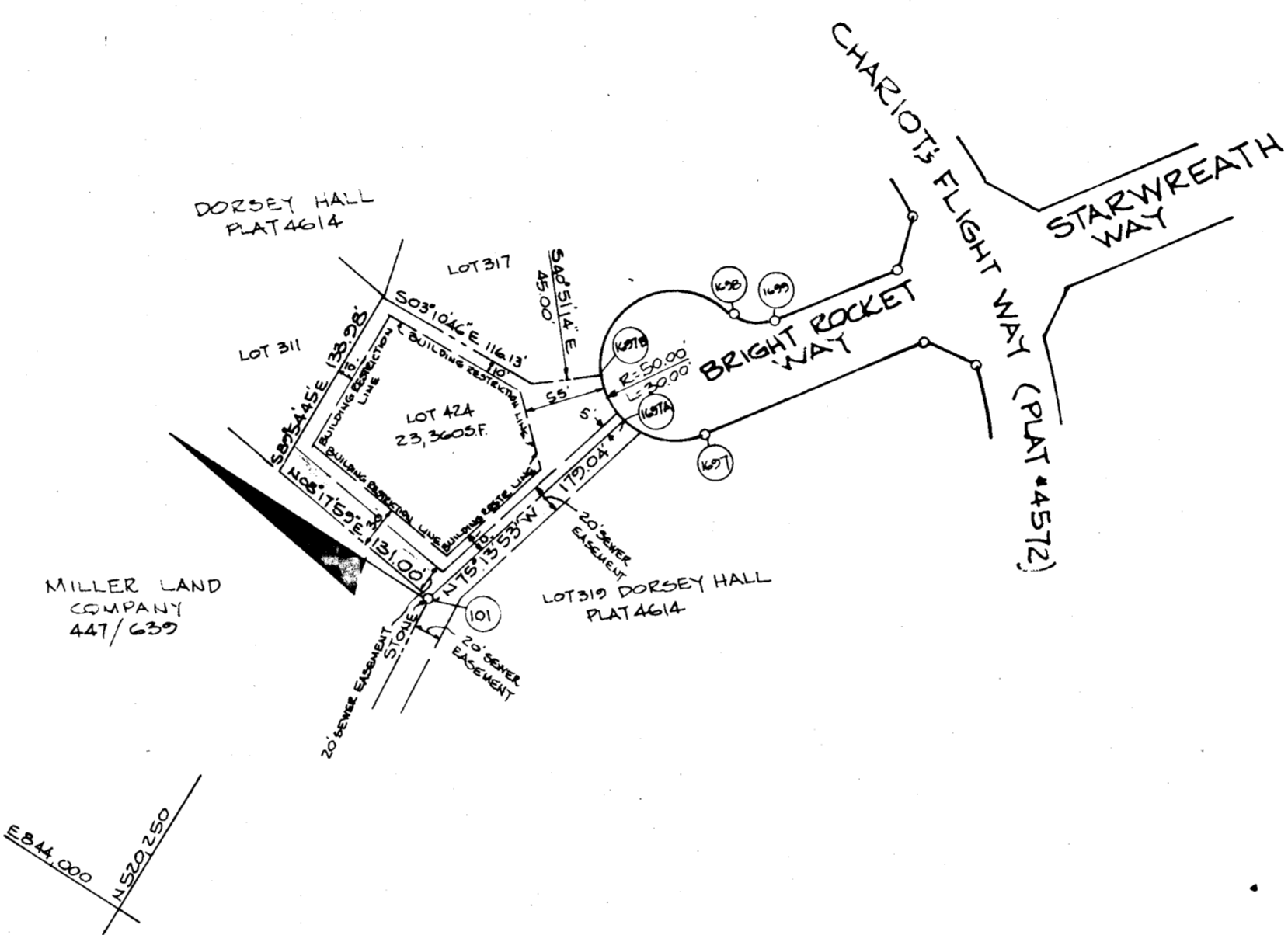
COORDINATES		
NO.	NORTH	EAST
101	520,183.72	844,283.07
1697	520,084.67	844,475.45
1698	520,111.44	844,552.58
1699	520,084.17	844,562.05

CURVE DATA						
NO.	RADIUS	Δ	ARC	TANG	CHORD	CRD. BEG.
1697A-1697B	50.00'	34°22'35"	30.00'	15.47'	29.55'	S31°57'25"W

NOTE:
THIS SUBDIVISION IS SUBJECT TO SECTION 18.122.B OF THE HOWARD COUNTY CODE. PUBLIC WATER AND PUBLIC SEWER SERVICE HAS BEEN GRANTED UNDER THE TERMS AND PROVISIONS THEREOF, EFFECTIVE MARCH 25, 1980 ON WHICH DATE THE DEVELOPERS AGREEMENT 2884D-W'S AND 2885D-W'S WAS FILED AND ACCEPTED.



VICINITY MAP
SCALE: 1" = 2000'



- NOTES:
- COORDINATES SHOWN ARE EXTENSIONS MADE FROM MARYLAND STATE PLANE COORDINATE SYSTEM BEARING REFER TO TRUE NORTH AND ARE BASED ON MARYLAND BUREAU OF CONTROL SURVEY POINT "COLUMBIA RES. 1966" N 512,095.04 E. 844,139.78
 - SEE PLAT # 4614
 - THE "DRAINAGE" EASEMENTS SHOWN HEREON ARE "DRAINAGE & UTILITY EASEMENTS"
 - THIS PROPERTY ZONED R-20 PER OCTOBER 3, 1977 COMPREHENSIVE ZONING PLAN.
 - THE PURPOSE OF THIS PLAT IS TO CHANGE RESTRICTION LINES AS SHOWN ONLY.

RECEIVED
BUREAU OF ENGINEERING

- LEGEND
- (101) COORDINATE NUMBER
 - BRL BUILDING RESTRICTION LINE
 - 4"x4"x36" CONCRETE MONUMENT

TABULATION

TOTAL NUMBER OF LOTS TO BE RECORDED	1
TOTAL AREA OF LOTS TO BE RECORDED	0.536 Act
TOTAL AREA OF ROADWAY TO BE RECORDED	0
TOTAL AREA OF SUBDIVISION TO BE RECORDED	0.536 Act

PLANS FOR PUBLIC WATER AND PUBLIC SEWERAGE SYSTEMS HAVE BEEN APPROVED BY THE DEPARTMENT OF HEALTH AND MENTAL HYGIENE, AND THESE FACILITIES WILL BE AVAILABLE TO ALL LOTS OFFERED FOR SALE.

SIGNED _____ DATE _____

THE LOTS OR PARCELS SHOWN ON THIS PLAT ARE SUBJECT TO THE SUPPLEMENTAL SEWER IN-AID - OF - CONSTRUCTION CHARGE CREATED BY SECTION 20-311A OF THE HOWARD COUNTY CODE, AND TO EXECUTIVE ORDER N. 72-9.

APPROVED: FOR PUBLIC WATER AND PUBLIC SEWERAGE SYSTEMS, IN CONFORMANCE WITH THE MASTER PLAN OF WATER AND SEWERAGE FOR HOWARD COUNTY.

Joseph Boyles 7-15-81
HOWARD COUNTY HEALTH OFFICER DATE

SURVEYOR'S CERTIFICATE

I HEREBY CERTIFY THAT THE FINAL PLAT SHOWN HEREON IS CORRECT, THAT IT IS A SUBDIVISION OF PART OF THE LANDS CONVEYED BY CONTEE SAND AND GRAVEL COMPANY, INC., TO COLUMBIA INDUSTRIAL DEVELOPMENT CORPORATION BY DEED OF TRUST DATED AUGUST 1, 1968 AND PART OF THE LANDS CONVEYED BY THE GUDELSKY COMPANY TO COLUMBIA INDUSTRIAL DEVELOPMENT CORPORATION BY DEED DATED AUGUST 1, 1968 AND RECORDED AMONG THE LAND RECORDS OF HOWARD COUNTY RESPECTIVELY IN LIBER 493 AT FOLIO 504 & LIBER 493 AT FOLIO 602, AND A PART OF THE LANDS CONVEYED BY CONTEE SAND AND GRAVEL COMPANY, INC. AND THE GUDELSKY COMPANY TO COLUMBIA INDUSTRIAL DEVELOPMENT CORPORATION, BY CONFIRMATORY DEED DATED MARCH 11, 1969 AND RECORDED AMONG THE LAND RECORDS OF HOWARD COUNTY IN LIBER 506 AT FOLIO 302, AND THAT ALL MONUMENTS ARE IN PLACE AS SHOWN IN ACCORDANCE WITH THE ANNOTATED CODE OF MARYLAND, AS AMENDED.

OWNER'S CERTIFICATE

WE, COLUMBIA INDUSTRIAL DEVELOPMENT CORPORATION, A MARYLAND CORPORATION BY WALTER E. WOODFORD, JR. AUTHORIZED AGENT AND FRANCIS R. HUNTER, JR., ASSISTANT SECRETARY, OWNERS OF THE PROPERTY SHOWN AND DESCRIBED HEREON HEREBY ADOPT THIS PLAN OF SUBDIVISION AND IN CONSIDERATION OF THE APPROVAL OF THIS FINAL PLAT BY THE OFFICE OF PLANNING AND ZONING, ESTABLISH THE MINIMUM BUILDING RESTRICTION LINES AND GRANT UNTO HOWARD COUNTY, MARYLAND, ITS SUCCESSORS AND ASSIGNS (1) THE RIGHT TO LAY, CONSTRUCT AND MAINTAIN SEWERS, DRAINS, WATER PIPES AND OTHER MUNICIPAL UTILITIES AND SERVICES, IN AND UNDER ALL ROADS AND STREET RIGHT-OF-WAYS AND THE SPECIFIC EASEMENT SHOWN HEREON; (2) THE RIGHT TO REQUIRE DEDICATION FOR PUBLIC USE THE BEDS OF THE STREETS AND/OR ROADS, AND FLOODPLAINS AND OPEN SPACE WHERE APPLICABLE AND FOR 5000' AND OTHER VALUABLE AND CONSIDERATION, HEREBY GRANT THE RIGHT AND OPTION TO HOWARD COUNTY TO ACQUIRE THE FEE SIMPLE TITLES TO THE BEDS OF THE STREETS AND/OR ROADS AND FLOODPLAINS, STORM DRAINAGE, FACILITIES AND OPEN SPACE, WHERE APPLICABLE; AND (3) THE RIGHT TO REQUIRE DEDICATION OF WATERWAYS AND DRAINAGE EASEMENTS FOR THE SPECIFIC PURPOSE OF THEIR CONSTRUCTION, REPAIR AND MAINTENANCE; AND (4) THAT NO BUILDING OR SIMILAR STRUCTURE OF ANY KIND SHALL BE ERRECTED ON OR OVER THE SAID EASEMENTS AND RIGHTS-OF-WAYS.

WITNESS OUR HANDS THIS 11th DAY OF JULY 1981.

RECORDED AS PLAT 4916 ON 7-17-81 AMONG THE LAND RECORDS OF HOWARD COUNTY, MARYLAND.

APPROVED: HOWARD COUNTY OFFICE OF PLANNING & ZONING.

Thomas J. Fleming 7-16-81
DIRECTOR DATE

DORSEY HALL LOT 424
A RESUBDIVISION OF LOT 318 SECTION 1 AREA 4
SHEET 1 OF 1
2ND ELECTION DISTRICT OF HOWARD COUNTY, MD.
SCALE: 1" = 100'
MAY 23, 1981
TAX MAP 24

APPROVED: FOR PUBLIC WATER AND PUBLIC SEWERAGE, STORMS DRAINAGE SYSTEMS AND PUBLIC ROADS.

HOWARD COUNTY DEPARTMENT OF PUBLIC WORKS

Walter Park 7-14-81
DIRECTOR DATE

Walter Park 5/27/1981
WALTER PARK
REG. PROF. L.S. #5530
DATE

BY: *Walter E. Woodford, Jr.* ATTEST: *Francis R. Hunter, Jr.*
COLUMBIA INDUSTRIAL DEVELOPMENT CORPORATION 10215 LITTLE PATUXENT PARKWAY COLUMBIA, MD. 21044

ENGINEERS:
HUDKINS ASSOCIATES, INC.
231 JOSEPH SQUARE
COLUMBIA, MARYLAND 21044