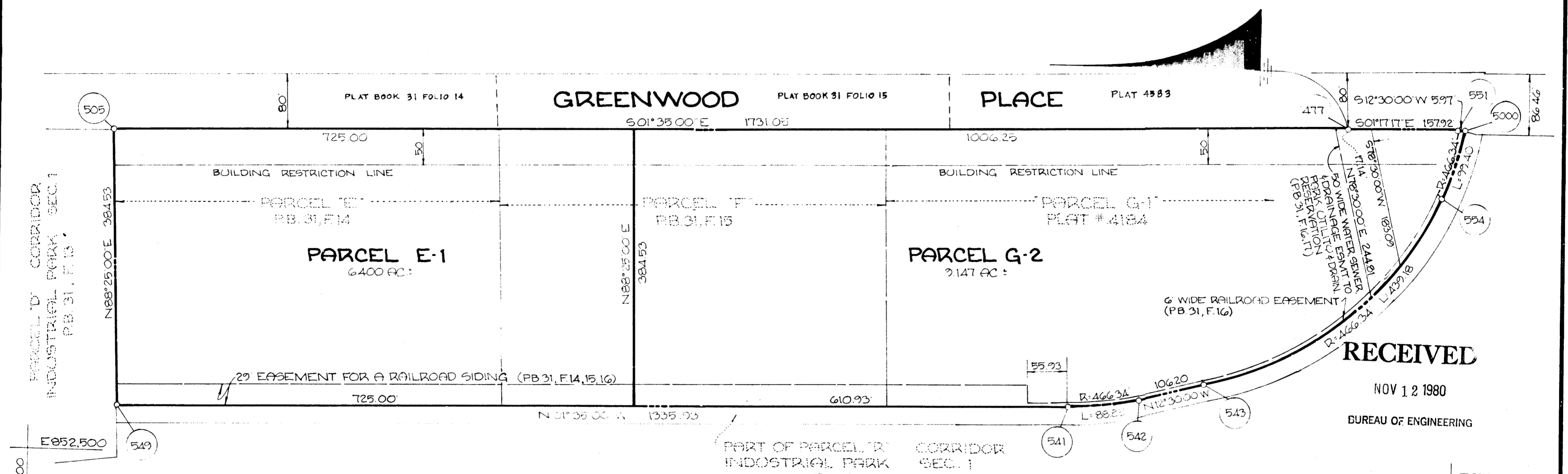
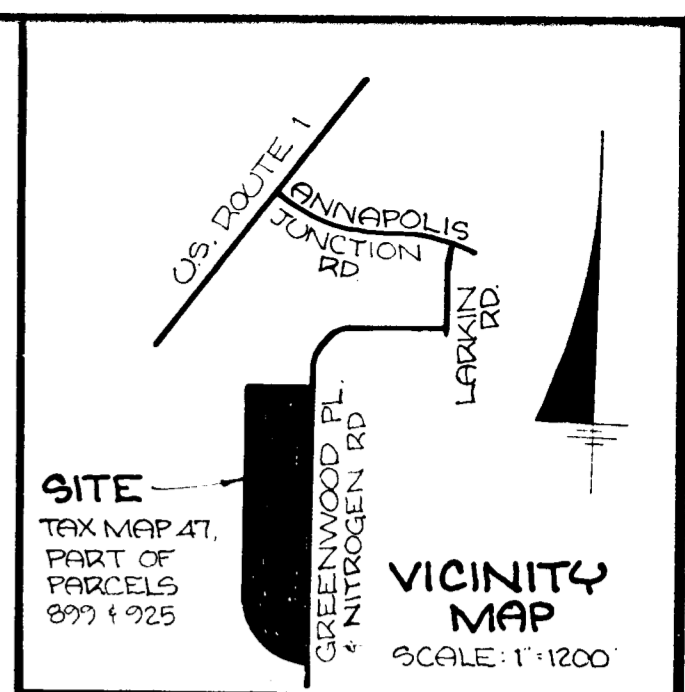


COORDINATES			CURVE DATA						
NO.	NORTH	EAST	FROM-TO	RADIUS	Δ	BEARING	TANGENT	CHORD	
505	473,391.20	852,213.72	5000-554	466.34	11°36'53"	99.43	29.21	N12°34'10" W 37.23	
477	471,669.81	852,721.55	554-543	466.34	53°57'34"	437.18	237.40	N39°28'47" W 423.13	
541	472,545.15	852,576.25	543-541	466.34	10°55'00"	89.85	44.52	N39°02'50" W 28.15	
542	471,957.10	852,601.13							
543	471,853.42	852,630.11							
549	473,380.57	852,557.34							
551	471,502.93	852,729.10							
554	471,526.82	852,879.14							
5000	471,497.10	852,793.20							

THIS PLAT & THE COORDINATES SHOWN HEREON ARE BASED UPON TRAVERSE CONTROLS ESTABLISHED BY RORDUM & TESCHKE IN FEB. 1973, WHICH WERE TIED TO MARYLAND BUREAU OF CONTROL SURVEY MONUMENTS.



NOTES:

- DENOTES 4" x 4" CONCRETE MONUMENT.
 - THE PARCELS SHOWN ON THIS PLAT ARE SUBJECT TO THE SUPPLEMENTAL SEWER IN-AID-OF CONSTRUCTION CHARGE CREATED BY SECTION 20.311A OF THE HOWARD COUNTY CODE, & TO EXECUTIVE ORDER NO. 72-9.
 - THE PURPOSE OF THIS PLAT IS TO RESUBDIVIDE PARCELS E & F, AS PREVIOUSLY RECORDED IN THE LAND RECORDS OF HOWARD COUNTY, IN PLAT BOOK 31, FOLIOS 14 & 15, RESPECTIVELY, AND PARCEL G-1, AS PREVIOUSLY RECORDED IN SAID LAND RECORDS IN PLAT NO 4184, & THEREBY ELIMINATE PARCEL F & CREATE PARCELS E-1 & G-2.
 - STORM WATER MANAGEMENT FACILITIES ARE REQUIRED AT THE SITE DEVELOPMENT STAGE. THESE FACILITIES ARE TO COMPLY WITH THE CRITERIA SET FORTH IN THE STORM WATER MANAGEMENT PROGRAM APPROVED FOR THIS SUBDIVISION BY THE HOWARD COUNTY DEPT. OF PUBLIC WORKS.
 - SUBJECT PROPERTY ZONED M-2 PER 10/3/77 COMPREHENSIVE ZONING PLAN.
- WATER & SEWER SERVICE FOR THESE LOTS WILL BE GRANTED UNDER THE PROVISIONS OF SECTION 18.122B OF THE HOWARD COUNTY CODE.

TABULATION

NO. OF PARCELS	2
AREA OF PARCELS	15.547 AC.
AREA OF ROADWAY	0
TOTAL AREA OF PLAT	15.547 AC.

APPROVED: FOR PUBLIC WATER & PUBLIC SEWERAGE. HOWARD COUNTY HEALTH DEPARTMENT.
Joseph J. G... 10-9-80
 COUNTY HEALTH OFFICER DATE

APPROVED: HOWARD COUNTY OFFICE OF PLANNING & ZONING.
Thomas L. H... 10-1-80
 DIRECTOR DATE

APPROVED: FOR STORM DRAINAGE SYSTEMS & PUBLIC ROADS, FOR PUBLIC WATER & PUBLIC SEWERAGE. HOWARD COUNTY DEPARTMENT OF PUBLIC WORKS.
Walter Park 8/25/80
 DIRECTOR DATE

SURVEYOR'S CERTIFICATE

I HEREBY CERTIFY THAT THE FINAL PLAT SHOWN HEREON IS CORRECT, THAT IT IS A SUBDIVISION OF PART OF LAND WHICH BY DEED DATED 4/29/74 & RECORDED AMONG THE LAND RECORDS OF HOWARD COUNTY, MD, IN LIBER 678, FOLIOS 749-757, WAS CONVEYED BY EPHRAIM WINEY, ET AL. ONTO THE COLUMBIA INDUSTRIAL DEVELOPMENT CORPORATION, & OF PART OF LAND WHICH BY DEED DATED 1/18/75 & RECORDED AMONG SAID LAND RECORDS IN LIBER 709, FOLIOS 421-425, WAS CONVEYED BY SAMUEL A. HEARN, ET AL. ONTO THE COLUMBIA INDUSTRIAL DEVELOPMENT CORPORATION, & THAT ALL MONUMENTS ARE IN PLACE AS SHOWN, IN ACCORDANCE WITH THE ANNOTATED CODE OF MARYLAND, AS AMENDED.

Walter Park 8/25/80
 WALTER PARK DATE
 PROFESSIONAL LAND SURVEYOR # 5539

DEDICATION FOR CORPORATION

WE, COLUMBIA INDUSTRIAL DEVELOPMENT CORPORATION, A MARYLAND CORPORATION, BY WALTER E. WOODFORD, JR., AUTHORIZED AGENT, & FRANCIS R. HUNTER, JR., ASSISTANT SECRETARY, OWNERS OF THE PROPERTY SHOWN & DESCRIBED HEREON, HEREBY ADOPT THIS PLAN OF SUBDIVISION, & IN CONSIDERATION OF THE APPROVAL OF THIS FINAL PLAT BY THE OFFICE OF PLANNING & ZONING, ESTABLISH THE MINIMUM BUILDING RESTRICTION LINES, ALL EASEMENTS & RIGHTS OF WAY AFFECTING THIS PROPERTY ARE INCLUDED IN THIS PLAN OF SUBDIVISION. WITNESS OUR HANDS THIS DAY OF AUGUST, 1980.

Walter E. Woodford Jr. 8/25/80 DATE
 WALTER E. WOODFORD, JR. AUTHORIZED AGENT
Francis R. Hunter Jr. DATE
 FRANCIS R. HUNTER, JR. ASSISTANT SECRETARY

RECORDED ON 10-17-80 AS PLAT NUMBER 4694 AMONG THE LAND RECORDS OF HOWARD COUNTY, MARYLAND.

FINAL PLAT
CORRIDOR INDUSTRIAL PARK SECTION 1
PARCELS E-1 & G-2
 A RESUBDIVISION OF PARCELS "E", "F", & "G-1"
 SHEET 1 OF 1
 6TH ELECTION DISTRICT HOWARD CO., MD
 SCALE: 1" = 100' AUGUST 25, 1980

SURVEYORS
 HODKINS ASSOCIATES, INC.
 231 JOSEPH SQUARE
 COLUMBIA, MD. 21044

RECEIVED
 NOV 12 1980
 BUREAU OF ENGINEERING

477

F-8124