

COORDINATES			CURVE DATA						
NO.	NORTH	EAST	NO.	RADIUS	Δ	LENGTH	TAN.	CHORD	L.C.B.
540	472311.61	852973.56							
541	472300.99	852589.18	541 to 542	466.34	10°55'00"	88.85	44.56	88.72	S07°02'30"E
541	472045.15	852596.25	543 to 554	466.34	53°57'34"	439.18	237.40	423.13	S39°28'47"E
542	471957.10	852607.13	554 to 5000	466.34	11°36'53"	99.40	49.87	99.23	S72°34'10"E
543	471853.42	852630.11							
546	471731.67	852648.54	520 to 559	466.34	27°47'45"	226.24	115.39	224.02	S77°41'07"E
545	471670.87	852593.32	559 to 636	466.34	33°27'36"	272.34	140.18	268.48	S47°03'26"E
544	471360.98	852536.81	567 to 523	490.34	02°33'46"	21.93	10.97	21.93	S89°41'53"W
543	470891.20	852551.17	566 to 555	490.34	38°13'25"	327.12	169.91	321.09	S46°07'18"E
542	470761.86	852604.74	475 to 551	65.00	104°05'02"	118.08	83.32	102.50	S50°27'18"W
541	470676.15	852715.44	8001 to 523	490.34	02°46'52"	23.80	11.90	23.80	N89°48'27"E
540	470656.16	852884.26							
557	470911.58	853377.00							
558	471052.19	853453.34							
559	471419.54	853430.88							
520	471467.32	853212.00							
523	471464.20	853098.95							
567	471464.08	853077.02							
636	471236.64	853627.42							
426	471035.04	853713.99							
12	470858.65	853598.86							
555	471509.11	852879.98							
554	471526.82	852899.14							
635	472225.64	852975.94							
525	472227.85	853055.90							
5000	471497.10	852993.80							
5001	471464.12	853075.15							
551	471502.93	852995.10							
552	471473.66	852988.60							
5004	470663.78	853082.14							
5005	470758.31	853081.32							

COORDINATES		
NO.	NORTH	EAST
637	470631.28	852995.96
475	471568.19	853074.14
556	470713.69	852995.24
477	471660.81	852991.55

PARCEL K
CORRIDOR INDUSTRIAL PARK
SECTION I
PLAT BOOK 31 FOLIO 16

N 472000
E 853100

EASEMENT FOR B & O RAILROAD
PLAT BOOK 31 FOLIO 18

GREENWOOD PLACE
PART 1 = 1.312 ACRES

PARCEL G-1
6.013 AC. ±

PARCEL G
PLAT BOOK 31 FOLIO 16

PARCEL G-1
6.013 AC. ±

PARCEL G
PLAT BOOK 31 FOLIO 16

PARCEL L-1
4.995 AC. ±

PARCEL L
PLAT BOOK 31 FOLIO 18

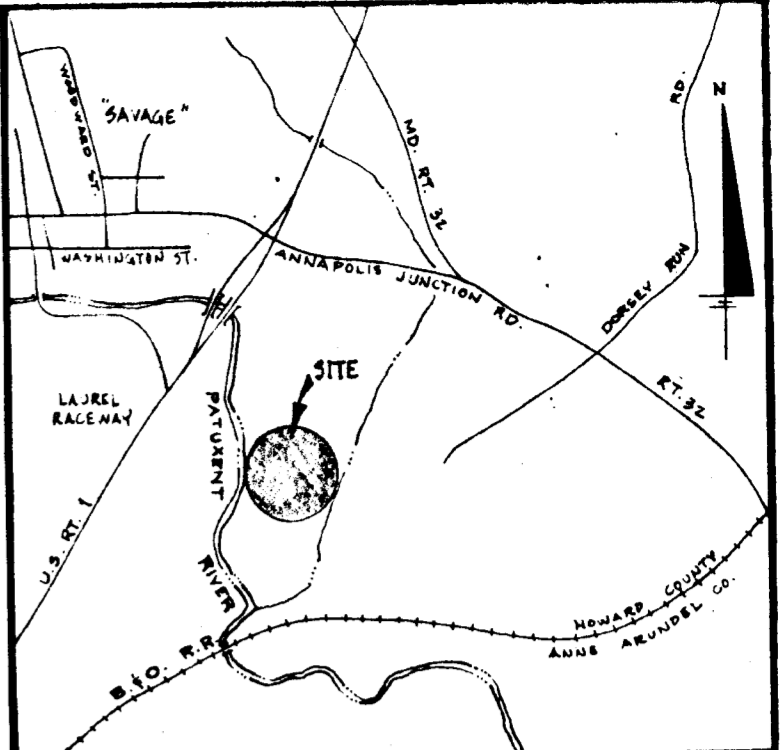
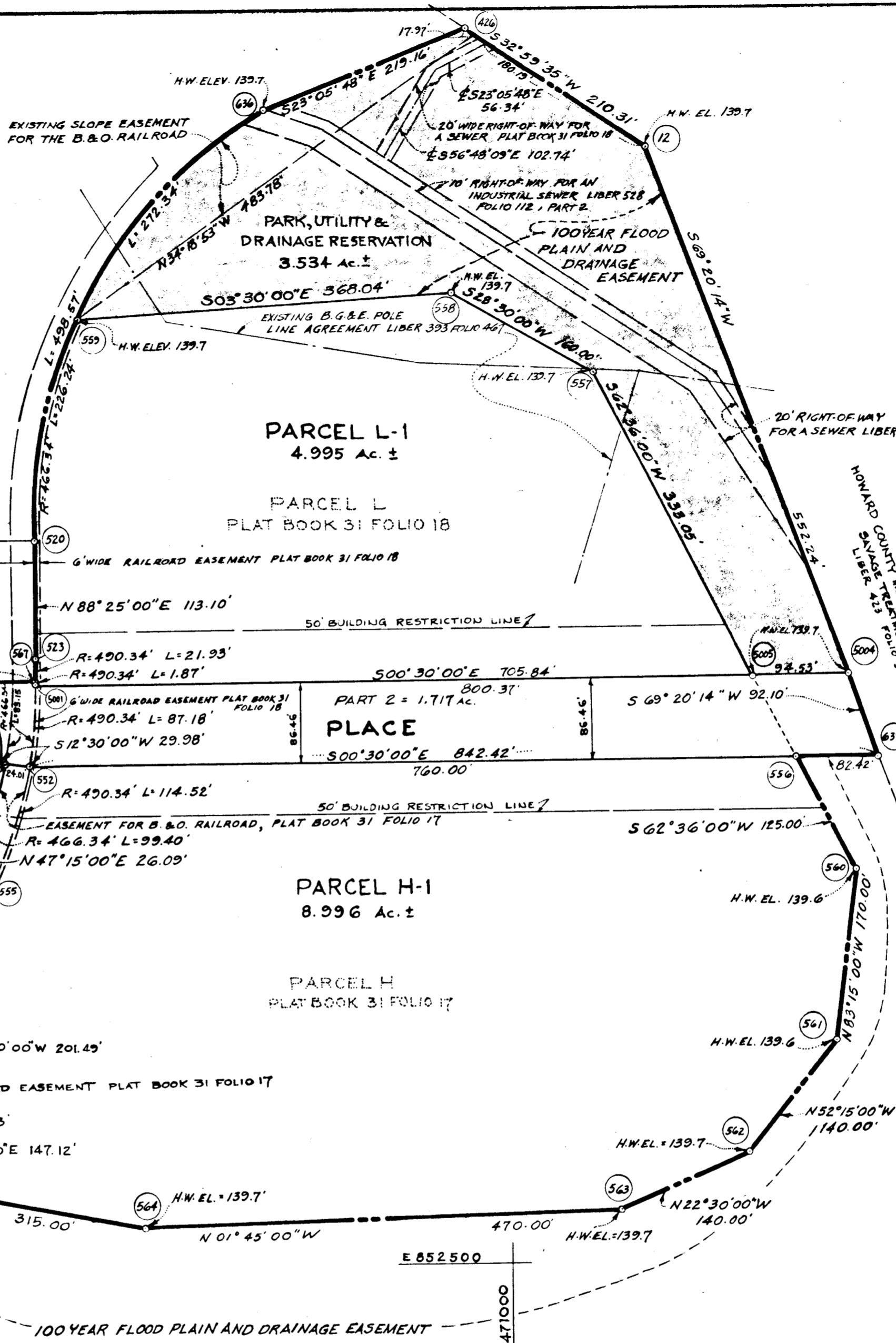
PLACE
PART 2 = 1.717 AC.

PARCEL H-1
8.996 AC. ±

PARCEL H
PLAT BOOK 31 FOLIO 17

TABULATIONS

TOTAL NUMBER OF PARCELS TO BE RECORDED: 4
TOTAL AREA OF PARCELS = 23.538 ACRES
TOTAL AREA OF ROADWAY = 3.029 ACRES
TOTAL AREA OF SUBDIVISION TO BE RECORDED: 26.567 ACRES



VICINITY MAP
SCALE: 1" = 2000'

NOTES:

- This plat and the coordinates shown hereon are based upon traverse controls established by Purdon & Jeschke in February, 1973 which controls were tied to Maryland Bureau of Control Survey Monuments.
- H. W. elev. = 139 - Denotes 100 year flood plain elevation.
- - Denotes 4" x 4" concrete monument.
- The lots or parcels shown on this plat are subject to the supplemental sewer-in-aid-of construction charge created by Section 20.311A of the Howard County Code, and to Executive Order No. 72-9.
- Storm water management facilities are required at the site development stage. These facilities are to comply with the criteria set forth in the storm water management program approved for this subdivision by the Howard County Department of Public Works.
- The declaration on public water restriction note that appeared on Sheet 1 of 9 and recorded among the Land Records of Howard County, Maryland on August 6, 1975 in Plat Book 31, Folio 12 is now void as per a "Rescission of Declaration" Agreement recorded among the land records of Howard County, Maryland on August 3, 1978 in Liber 895, Folio 623.
- The purpose of this plat is to correct certain curve data for the railroad easements as shown on plat 4184 recorded among the land records of Howard County, Maryland on December 21, 1978.

APPROVED: For public sewerage systems and public water systems, Howard County Health Department.
John M. Boyles 4-9-80
County Health Officer Date

APPROVED: Howard County Office of Planning and Zoning
James L. Harris 4-14-80
Director Date

APPROVED: For public water, public sewerage, storm drainage systems and public roads. Howard County Department of Public Works.
Walter F. Neumeier 3-27-80
Director Date

SURVEYOR'S CERTIFICATE
I hereby certify that the Final Plat hereon is correct, that it is a subdivision of part of the lands conveyed by Ephraim Winer, et al and Samuel A. Wearn, et al, to the Columbia Industrial Development Corporation by deeds dated April 29, 1974 and January 18, 1975, respectively, and recorded among the land records of Howard County, Maryland in Liber 678, Folios 749 thru and including 757 and Liber 709, Folios 421 thru and including 425; Columbia Industrial Development Corporation to Howard County, Maryland by deed dated November 13, 1979 and recorded among the land records of Howard County, Maryland in Liber 972, Folio 746; Columbia Industrial Development Corporation to John Hancock Mutual Life Insurance Company by deed dated December 28, 1978 and recorded among the land records of Howard County, Maryland in Liber 921, Folio 144; and that all monuments are in place as shown, in accordance with the annotated code of Maryland as amended.
H. Richard Wale
H. Richard Wale - Property Line Surveyor
Reg. No. 77
The Rose Company
Columbia, Maryland 21044

DEDICATION FOR CORPORATION
We, Columbia Industrial Development Corporation, a Maryland Corporation, by Walter E. Woodford, Jr., authorized agent, and Francis R. Hunter, Jr., Assistant Secretary; John Hancock Mutual Life Insurance Company, a Massachusetts Corporation, by Paul F. Hahesy, Assistant Treasurer, and James H. Young, Assistant Secretary; and Howard County, Maryland, by J. Hugh Nichols, County Executive, and William E. Eakle, County Administrator, owners of the property shown and described herein hereby adopt this plan of subdivision, and in consideration of the approval of this Final Plat by the Office of Planning & Zoning establish the minimum building restriction lines and grant unto Howard County, Maryland, its successors and assigns (1) the right to lay, construct, and maintain sewers, drains, water pipes and other municipal utilities and services in and under all roads and street right-of-way and the specific easements areas shown hereon; (2) dedicate to public use the beds of the streets and/or roads, exclusive of Part 2 of Greenwood Place, and flood plains and open space where applicable and for one dollar (\$1.00) consideration hereby grant the right and option to Howard County to acquire the fee simple title to the beds of the streets and the roads and flood plains and open space where applicable; (3) that no building or similar structure of any kind shall be erected on or over the said easements and rights-of-way; (4) it is further agreed that maintenance of all waterways, drainage easements and/or flood plains shown hereon are the responsibility of the owner, its successors and assigns, except as to the 50' easement area shown as crossing Parcels G-1 and H-1.
Witness our hands this 31st day of March 1979.
Columbia Industrial Development Corporation: *Walter E. Woodford, Jr.* Authorized Agent
Howard County: *J. Hugh Nichols* County Executive
John Hancock Mutual Life Insurance Co: *Paul F. Hahesy* Assistant Treasurer
James H. Young Assistant Secretary

RECORDED AS PLAT 4583
ON 4-15-80 AMONG THE LAND RECORDS
OF HOWARD COUNTY, MARYLAND:
**CORRIDOR INDUSTRIAL PARK
SECTION 1
PARCELS G-1, H-1, L-1, AND A
PORTION OF THE PARK, UTILITY,
AND DRAINAGE RESERVATION
A RESUBDIVISION OF PARCELS G, H, AND L, AND
A PORTION OF THE PARK, UTILITY AND
DRAINAGE RESERVATION.
SHEET 1 OF 1
6TH ELECTION DISTRICT OF HOWARD COUNTY, MD.
SCALE: 1" = 100' DATE: December 11, 1979**

#71