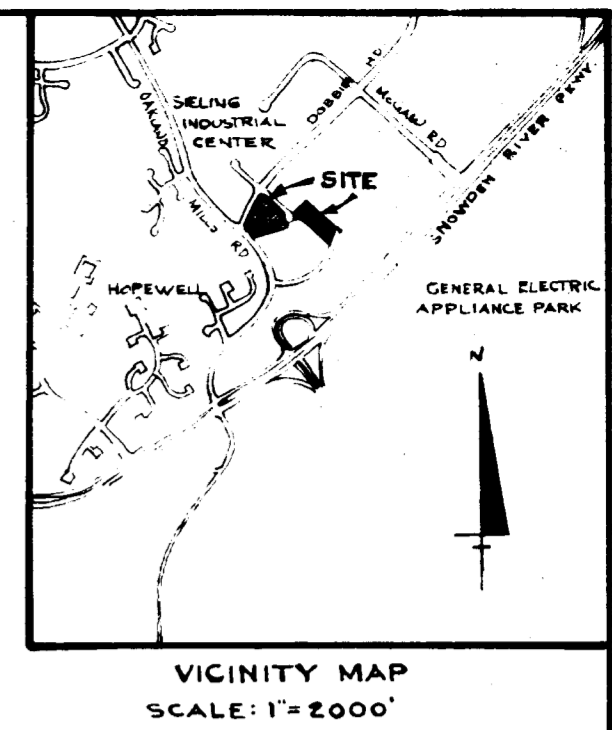
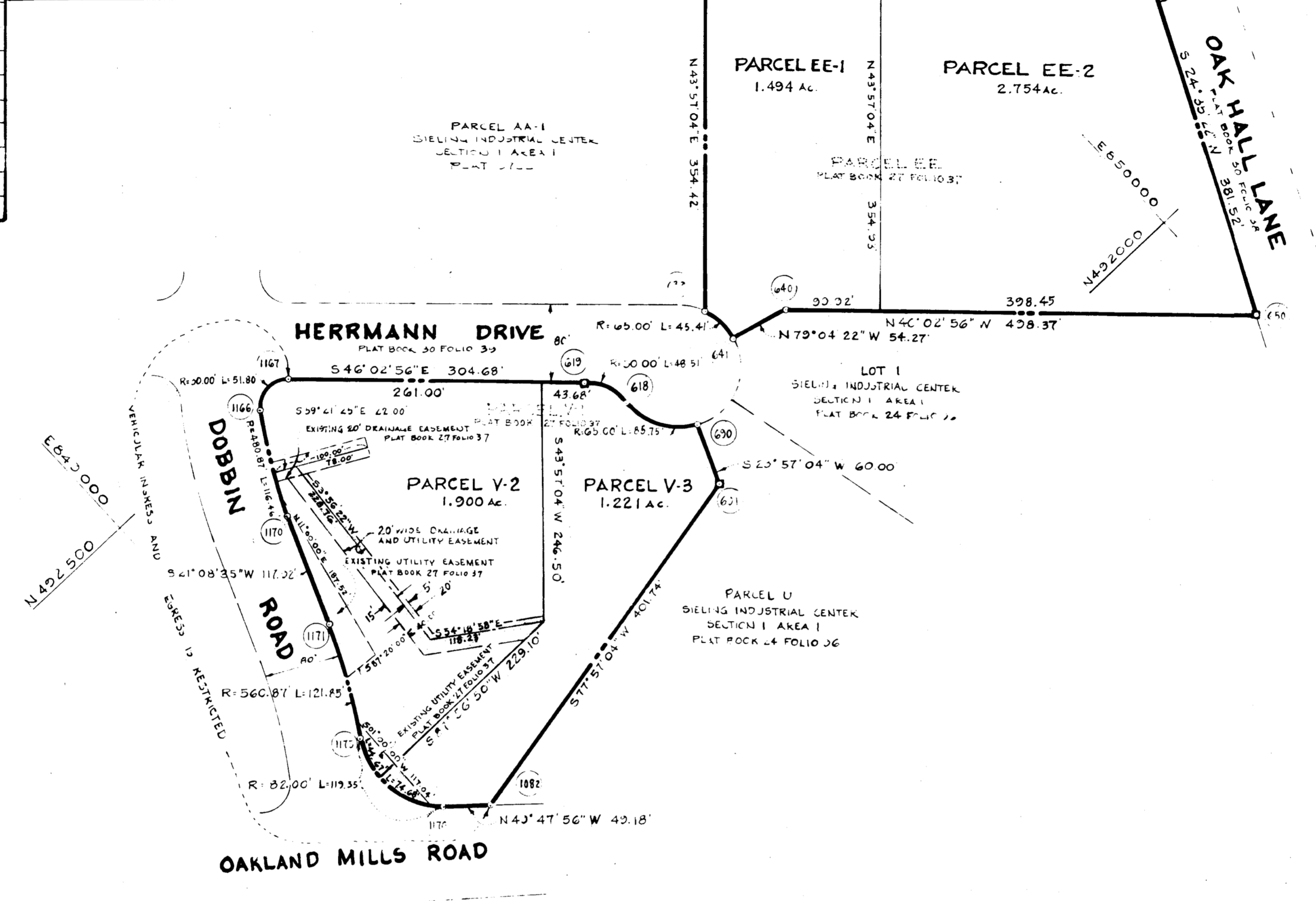


COORDINATES		
NO.	NORTH	EAST
638	402515.77	842834.55
650	401860.50	850007.27
640	402200.30	849648.88
641	402210.27	849505.60
633	402260.01	849588.57
600	402120.30	849505.30
601	402114.76	849481.03
618	402239.70	849427.67
610	402284.04	849453.07
1082	402030.30	849088.14
212	402207.42	850166.42
1166	402401.12	849188.32
1167	402495.50	849233.71
1170	402388.62	849133.64
1171	402278.64	849091.10
1175	402170.64	849035.20
1176	402062.64	849050.58

CURVE DATA							
NO.	RAD.	Δ	ARC	TAN.	CHD.	L.C.B.	
690-618	65.00	75°34'57"	85.75	50.40	73.66	S28°15'27"E	
618-610	50.00	55°34'57"	48.51	26.35	46.63	N18°15'27"W	
1167-1166	30.00	08°55'54"	51.80	35.08	45.60	S84°23'01"W	
1166-1170	480.87	13°52'35"	116.40	58.55	112.18	S28°04'53"W	
1171-1175	560.87	12°26'53"	121.85	61.17	121.31	S27°21'02"W	
1175-1176	82.00	83°23'24"	119.35	73.05	100.03	S08°06'14"E	
633-641	65.00	40°01'47"	45.41	23.68	44.43	N03°05'15"W	



- NOTES:
- 1) MINIMUM BUILDING SETBACK RESTRICTIONS FROM PROPERTY LINES AND THE RIGHT-OF-WAY OF ANY PUBLIC ROAD OR STREET TO BE IN ACCORDANCE WITH THE RECORDED FINAL DEVELOPMENT PLAN CRITERIA.
 - 2) ■ DENOTES 4"X4" CONCRETE MONUMENT.
 - 3) THE LOTS OR PARCELS SHOWN ON THIS PLAT ARE SUBJECT TO THE SUPPLEMENTAL SEWER IN-AID-OF-CONSTRUCTION CHARGE CREATED BY SECTION 20.311A OF HOWARD COUNTY CODE AND TO EXECUTIVE ORDER NO. 72-9.
 - 4) THIS PLAT AND THE COORDINATES SHOWN HEREON ARE BASED UPON TRAVERSE CONTROLS FOR COLUMBIA ESTABLISHED BY MAPS, INC. IN 1965 AND BY PURDM & JESCHKE IN 1968, WHICH CONTROLS WERE TIED TO MARYLAND BUREAU OF CONTROL SURVEYS MONUMENTS AND TO U.S. COAST & GEODETIC SURVEY MONUMENTS IN THE COLUMBIA AREA.
 - 5) THIS PLAT IS ZONED NEW TO UN PER 10-3-77 COMPREHENSIVE PLAN.

RECEIVED
 NOV 27 1979
 BUREAU OF ENGINEERING

THE PURPOSE OF THIS PLAT IS TO RESUBDIVIDE PARCELS EE-1 AS SHOWN ON PLAT RECORDED AMONG THE LAND RECORDS OF HOWARD COUNTY MARYLAND ON MAY 6, 1974 IN PLAT BOOK 27 FOLIO 37 INTO PARCELS V-2, V-3 AND EE-1 AND EE-2

#4449

TABULATIONS
 TOTAL NUMBER OF PARCELS TO BE RECORDED = 4
 TOTAL AREA OF PARCELS = 7.369 Ac.
 TOTAL AREA OF ROADWAY = 0
 TOTAL AREA OF SUBDIVISION TO BE RECORDED = 7.369 ACRES

APPROVED: For public sewerage systems and public water Systems; Howard County Health Department

[Signature] 11-19-77
 County Health Officer Date

APPROVED: Howard County Office of Planning & Zoning

 Director Date

APPROVED: For public water, public sewerage, storm drainage systems and public roads, Howard County Department of Public Works.

 Director Date

SURVEYORS CERTIFICATE
 I hereby certify that the Final Plat shown hereon is correct; that it is a subdivision of part of the lands conveyed by The Howard Research and Development Corporation to Columbia Industrial Development Corporation by deed dated March 7, 1974 and recorded among the land records of Howard County, Maryland in Liber 673 Folio 33; and by C. Aileen Aines to The Howard Research and Development Corporation by deed dated December 13, 1966 and recorded among the land records of Howard County, Maryland in Liber 463 Folio 19, and that all monuments are in place as shown in accordance with the Annotated Code of Maryland, as amended.

[Signature] 9-11-79
 H. Richard Moale
 Property Line Surveyor No. 77
 The Rouse Company
 Columbia, Maryland
 21044

DEDICATION FOR CORPORATION
 We, The Howard Research and Development Corporation, and Columbia Industrial Development Corporation, by Walter E. Woodford, Jr., Authorized Agent, and Francis E. Hunter, Jr., Assistant Secretary, owners of the property shown and described hereon, hereby adopt this plan of subdivision, and in consideration of the approval of this Final Plat by the Office of Planning and Zoning, establish the minimum building restriction lines and grant unto Howard County, Maryland its successors and assigns (1) the right to lay, construct and maintain sewers, drains, water pipes and other municipal utilities and services in and under all roads and street rights-of-way and the specific easements area, shown hereon; (2) dedicate to public use the beds of the streets and/or road and flood plains and open space where applicable and for one dollar (\$1.00) consideration hereby grant the right and option to Howard County to acquire the fee simple title to the beds of the streets and the roads and flood plains and open space where applicable; (3) that no building or similar structure of any kind shall be erected on or over the said easements and rights-of-way.

Witness our hands this 20 day of September, 1979.

[Signature]
 Authorized Agent

[Signature]
 Assistant Secretary

COLUMBIA
SIELING INDUSTRIAL CENTER
 SECTION I AREA I
PARCELS V-2, V-3, EE-1 AND EE-2
 A RESUBDIVISION OF PARCELS V-1 AND EE
 SHEET 1 OF 1
 6TH ELECTION DISTRICT OF HOWARD COUNTY, MD.
 SCALE: 1"=100' DATE: SEPTEMBER 11, 1979

#62