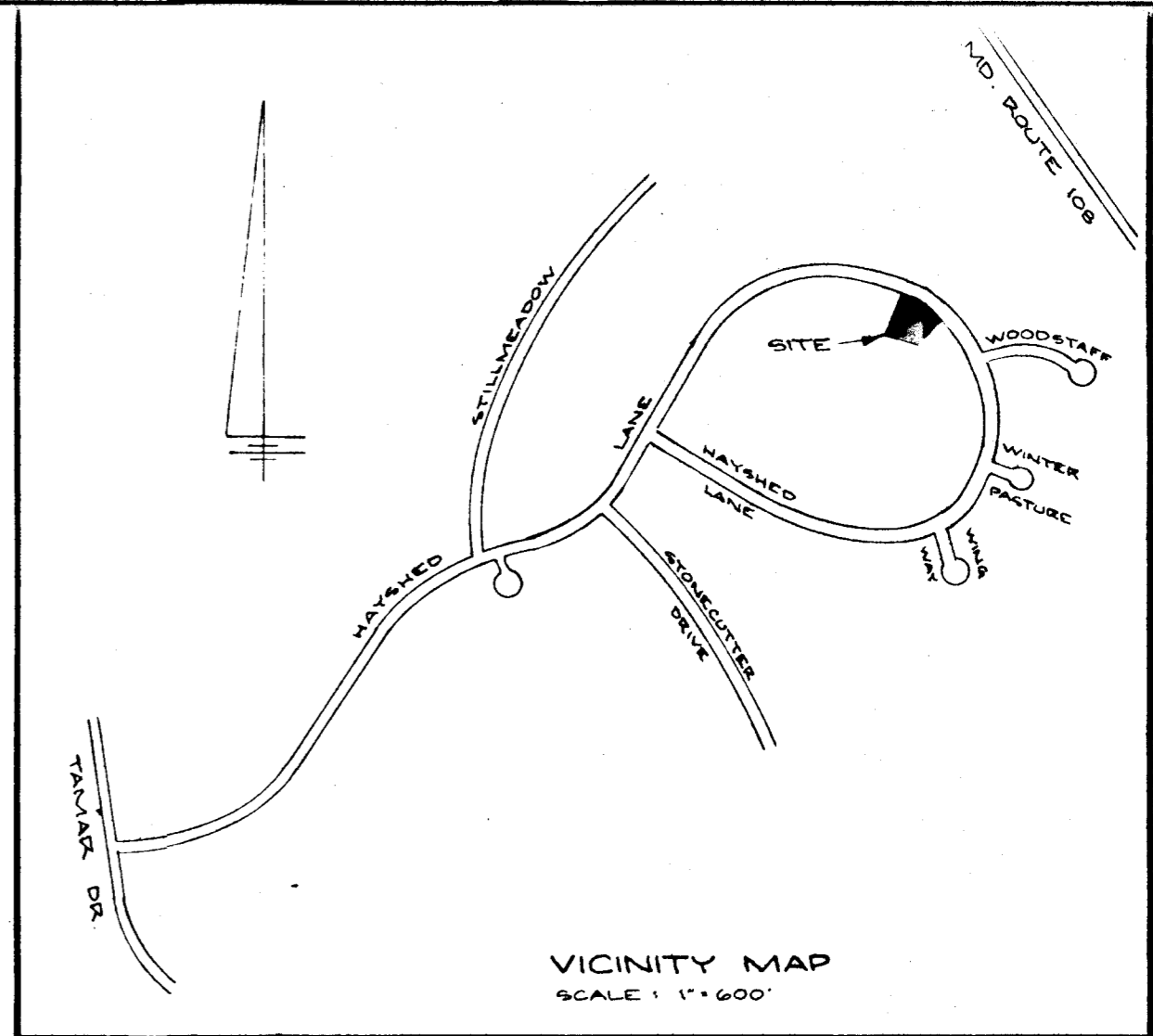
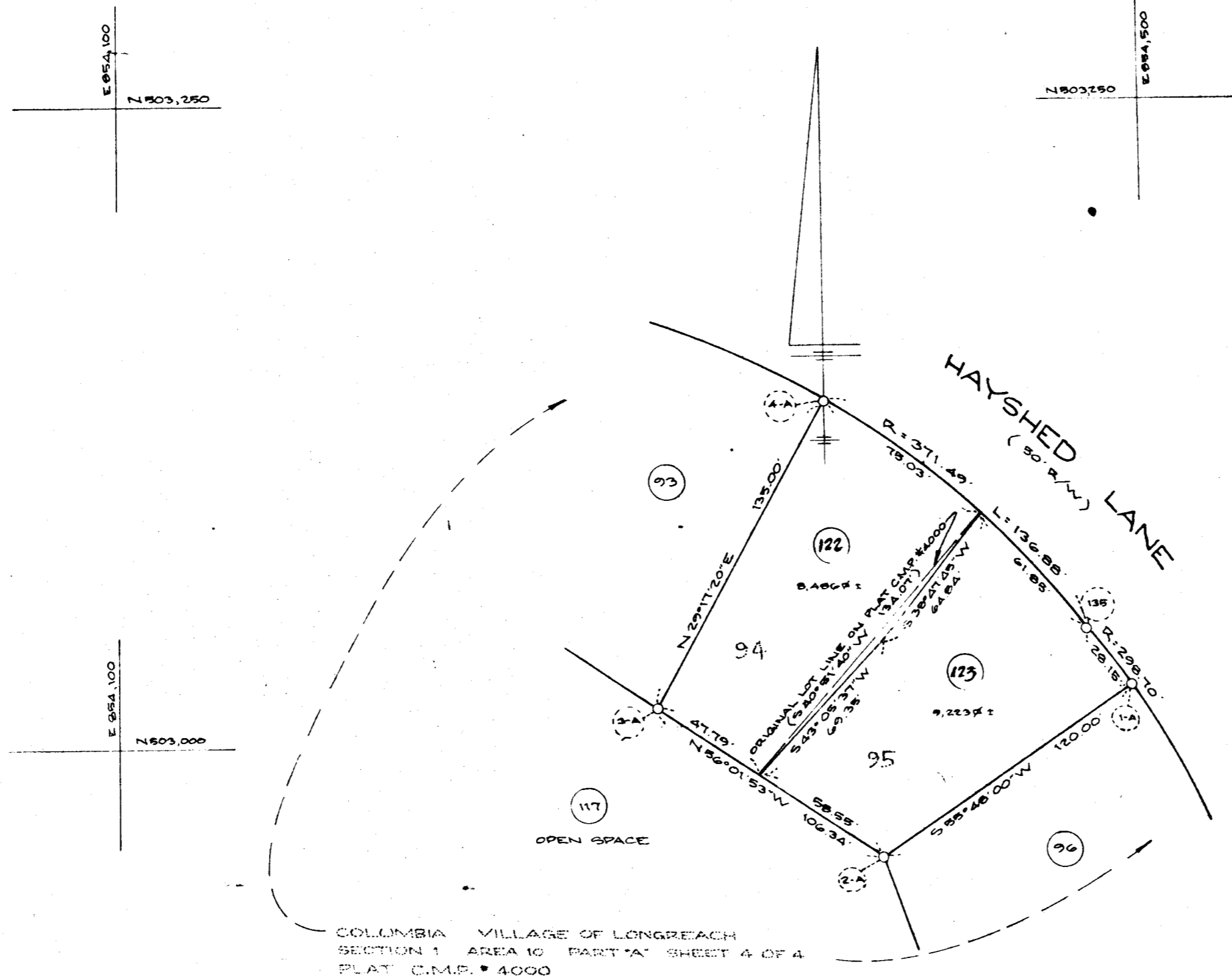


HOWARD COUNTY GRID SYSTEM		
COORDINATE VALUES		
NUMBER	NORTH	EAST
135	803,043.10	854,478.32
1-A	803,022.21	854,476.87
2-A	802,954.76	854,397.64
3-A	803,014.17	854,309.45
4-A	803,131.91	854,375.49

COORDINATES ARE BASED ON THE MARYLAND STATE PLANE COORDINATE SYSTEM. SEE PLAT # 4000



COLUMBIA VILLAGE OF LONGREACH
SECTION 1 AREA 10 PART "A" SHEET 4 OF 4
PLAT C.M.P. # 4000

TABULATION

TOTAL NUMBER OF LOTS	2
TOTAL AREA OF LOTS	17,709 ^{sq} = 0.4065 AC ±
TOTAL AREA OF ROADWAYS	0
TOTAL AREA OF SUBDIVISION	17,709 ^{sq} = 0.4065 AC ±

NOTE: THE PURPOSE OF THIS PLAT IS TO RESUBDIVIDE THE LOT LINE BETWEEN LOTS 94 & 95, COLUMBIA, VILLAGE OF LONGREACH, SECTION 1, AREA 10, PART "A", SHEET 4 OF 4, PLAT C.M.P. # 4000

APPROVED: FOR PUBLIC WATER & PUBLIC SEWERAGE SYSTEMS. HOWARD COUNTY HEALTH DEPARTMENT.
Joseph B. Ford MD 2-9-79
COUNTY HEALTH OFFICER DATE

SURVEYOR'S CERTIFICATE
I HEREBY CERTIFY THAT THE FINAL PLAT SHOWN HEREON IS CORRECT, THAT IT IS A SUBDIVISION OF PART OF THE LANDS CONVEYED BY HOWARD RESEARCH & DEVELOPMENT CORP. TO ETHAN D. GROSSMAN, ENGINEERS, INC., BY DEED DATED OCTOBER 6, 1978, & RECORDED AMONG THE LAND RECORDS OF HOWARD COUNTY IN LIBER 908, FOLIO 311, AND THAT ALL MONUMENTS ARE IN PLACE AS SHOWN IN ACCORDANCE WITH THE ANNOTATED CODE OF MARYLAND, AS AMENDED.

OWNER'S CERTIFICATE
I, ETHAN GROSSMAN, OWNER OF THE PROPERTY SHOWN & DESCRIBED HEREON, HEREBY ADOPT THIS PLAN OF SUBDIVISION, AND IN CONSIDERATION OF THE APPROVAL OF THIS PLAT BY THE OFFICE OF PLANNING & ZONING ESTABLISH THE MINIMUM BUILDING RESTRICTION LINES. ALL EASEMENTS AND RIGHTS-OF-WAY AFFECTING THIS PROPERTY ARE INCLUDED IN THIS PLAN OF SUBDIVISION. WITNESS MY HAND THIS THE 20TH DAY OF DECEMBER, 1978.

RECORDED AS PLAT NUMBER 4222
ON 2-22-79 AMONG THE LAND RECORDS OF HOWARD COUNTY, MARYLAND

APPROVED: HOWARD COUNTY OFFICE OF PLANNING & ZONING.
Diana L. Harris 2-21-79
DIRECTOR DATE

FINAL PLAT
COLUMBIA - VILLAGE OF LONGREACH
LOTS 122 & 123
RESUBDIVISION OF LOTS 94 & 95
SECT. 1, AREA 10,
6TH ELECTION DISTRICT
HOWARD COUNTY, MD.
DECEMBER 20, 1978 SCALE: 1" = 50'

APPROVED: FOR PUBLIC WATER & PUBLIC SEWERAGE, STORM DRAINAGE SYSTEMS, & PUBLIC ROADS. HOWARD COUNTY DEPARTMENT OF PUBLIC WORKS.
George F. Nemy 2/9/79
DIRECTOR DATE

Walter Park 12/19/78
WALTER PARK DATE
REG. L.S. # 5539

Ethan Grossman 12/20/78
ETHAN GROSSMAN, PRESIDENT DATE
ETHAN GROSSMAN, ENGINEERS, INC.

ENGINEER
HUDKINS ASSOCIATES, INC.
231 JOSEPH SQUARE
COLUMBIA, MARYLAND 21044

100