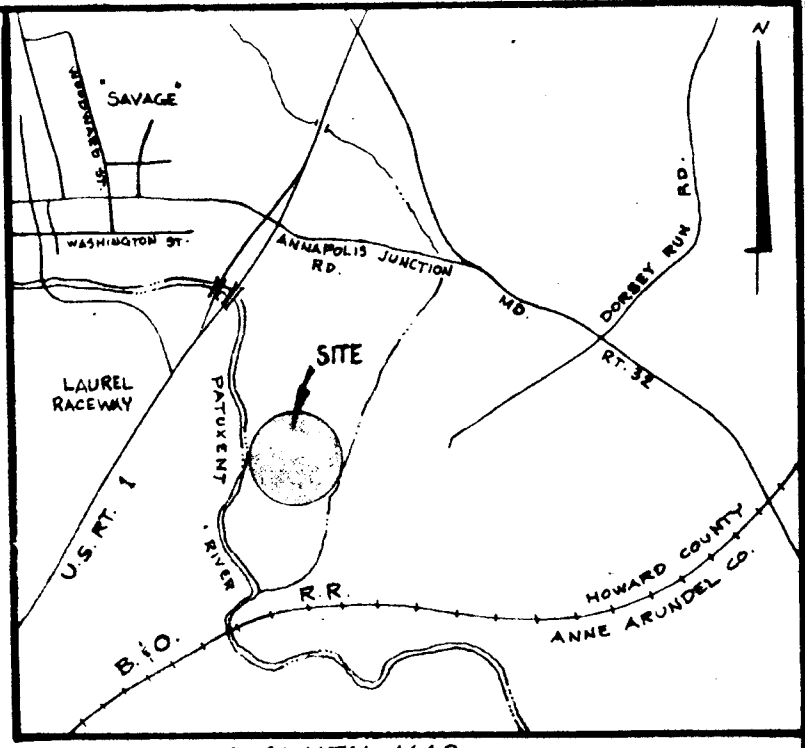
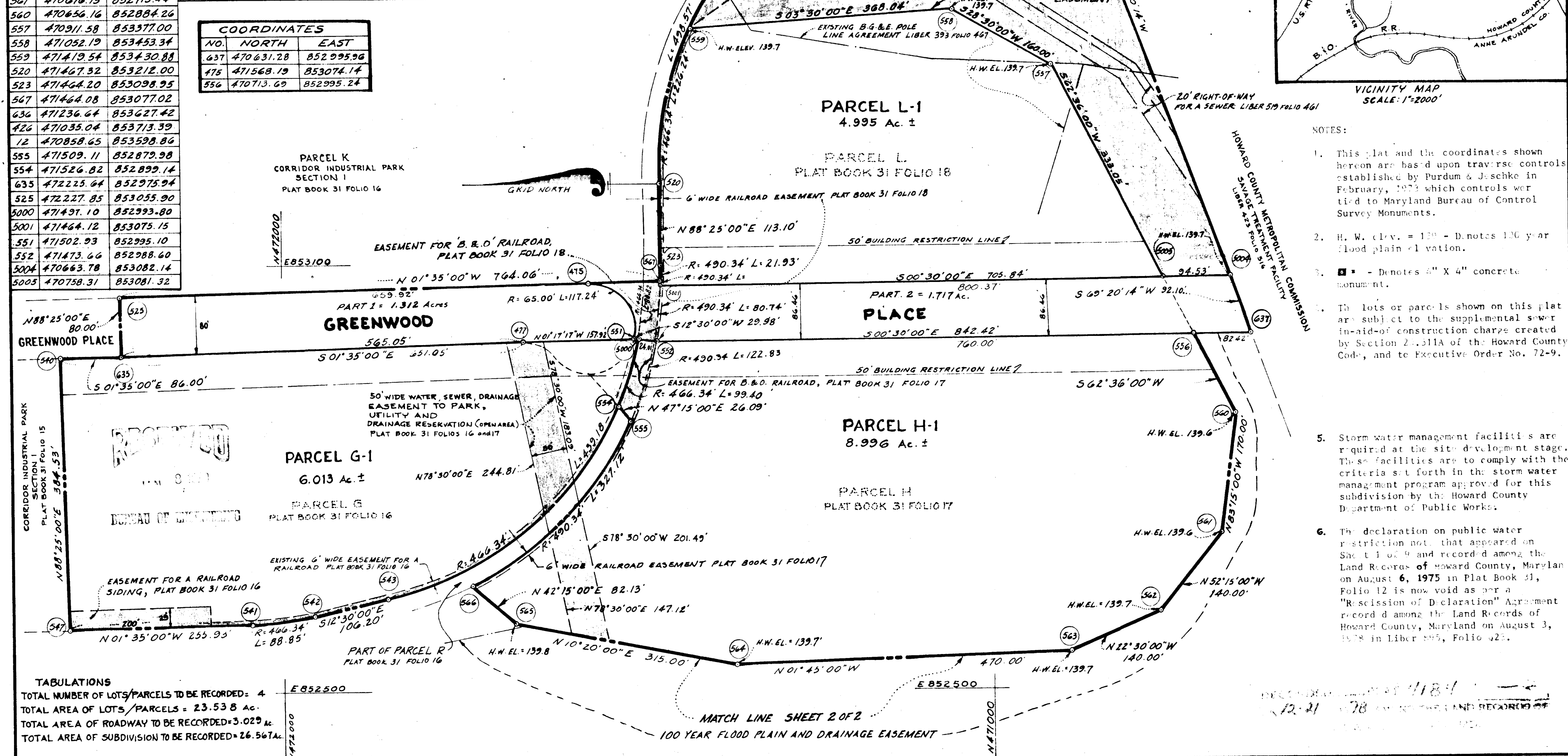


COORDINATES			CURVE DATA						
NO.	NORTH	EAST	NO.	RADIUS	Δ	L	TAN	CHORD	L.C.B.
540	472311.61	852973.56							
547	472300.99	852589.18	541 to 542	466.34	10°55'00"	88.85	44.56	88.72	507°02'30"E
541	472045.15	852596.25	543 to 554	466.34	53°57'34"	439.18	237.40	423.13	539°28'47"E
542	471957.10	852607.13	554 to 5000	466.34	11°36'53"	99.40	49.87	99.23	572°34'10"E
543	471853.42	852630.11	520 to 559	466.34	27°47'45"	226.24	115.39	224.02	577°41'07"E
566	471731.67	852648.54	559 to 636	466.34	33°27'36"	272.34	140.18	268.48	547°03'26"E
564	471560.98	852536.81	567 to 523	490.34	02°33'46"	21.93	10.97	21.93	589°41'53"W
563	470891.20	852551.17	566 to 555	490.34	38°13'25"	327.12	169.91	321.09	546°07'18"E
562	470761.86	852604.74	475 to 551	65.00	104°05'02"	118.08	83.32	102.50	550°27'18"W
561	470676.15	852715.44							
560	470656.16	852884.24							
557	470911.58	853377.00							
558	471052.19	853453.34							
559	471419.54	853430.88							
520	471467.32	853212.00							
523	471464.20	853098.95							
567	471464.08	853077.02							
636	471236.64	853627.42							
426	471035.04	853713.39							
12	470858.65	853598.86							
555	471509.11	852879.98							
554	471526.82	852899.14							
635	472225.64	852975.94							
525	472227.85	853055.90							
5000	471491.10	852993.80							
5001	471464.12	853075.15							
551	471502.93	852995.10							
552	471473.66	852988.60							
5004	470663.78	853082.14							
5005	470758.31	853081.32							

COORDINATES		
NO.	NORTH	EAST
637	470631.28	852995.96
475	471568.19	853074.14
556	470713.69	852995.24



- NOTES:
- This plat and the coordinates shown hereon are based upon traverse controls established by Purdum & Jeschke in February, 1973 which controls were tied to Maryland Bureau of Control Survey Monuments.
 - H. W. Elev. = 139.7 - D. notes 100 year flood plain elevation.
 - - Denotes 4" X 4" concrete monument.
 - The lots or parcels shown on this plat are subject to the supplemental sewer in-aid-of construction charge created by Section 2-311A of the Howard County Code, and to Executive Order No. 72-9.
 - Storm water management facilities are required at the site development stage. These facilities are to comply with the criteria set forth in the storm water management program approved for this subdivision by the Howard County Department of Public Works.
 - The declaration on public water restriction not that appeared on Sheet 1 of 9 and recorded among the Land Records of Howard County, Maryland on August 6, 1975 in Plat Book 31, Folio 12 is now void as per a "Rescission of Declaration" Agreement recorded among the Land Records of Howard County, Maryland on August 3, 1978 in Liber 295, Folio 425.

TABULATIONS
 TOTAL NUMBER OF LOTS/PARCELS TO BE RECORDED = 4
 TOTAL AREA OF LOTS/PARCELS = 23.538 AC.
 TOTAL AREA OF ROADWAY TO BE RECORDED = 3.029 AC.
 TOTAL AREA OF SUBDIVISION TO BE RECORDED = 26.567 AC.

APPROVED: For public sewerage systems and public water systems, Howard County Health Department.
[Signature] 12-19-78
 Date

APPROVED: Howard County Office of Planning and Zoning.
[Signature] 12-19-78
 Date

APPROVED: For public water, public sewerage, storm drainage systems and public roads, Howard County Department of Public Works.
[Signature] 12/15/78
 Date

SURVEYOR'S CERTIFICATE
 I hereby certify that the Final Plat hereon is correct, that it is a subdivision of part of lands conveyed by Ephraim Winer, et. al. and Samuel A. Hearn, et. al. to the Columbia Industrial Development Corporation by deeds dated April 29, 1974 and January 18, 1975, respectively, and recorded among the Land Records of Howard County, Maryland in Liber 678, Folios 749 thru and including 757 and Liber 709, Folios 421 thru and including 425; and that all monuments are in place as shown, in accordance with the annotated code of Maryland as amended.

[Signature]
 H. Richard Moore - Property Line Surveyor
 No. 77
 The Rouse Company
 Columbia, Maryland 21044

DEDICATED FOR CORPORATE USE
 We, Columbia Industrial Development Corporation, a Maryland Corporation, by Walter E. Woodford, Jr., authorized agent, and Francis R. Hunter, Jr., Assistant Secretary, owners of the property shown and described herein hereby adopt this plan of subdivision, and in consideration of the approval of this Final Plat by the Office of Planning & Zoning establish the minimum building restriction lines and grant unto Howard County, Maryland, its successors and assigns (1) the right to lay, construct, and maintain sewers, drains, water pipes and other municipal utilities and services in and under all roads and street right-of-way and the specific easements areas shown hereon; (2) dedicate to public use the beds of the streets and/or road, exclusive of Part 2 of Greenwood Place, and flood plains and open space where applicable and for one dollar (\$1.00) consideration hereby grant the right and option to Howard County to acquire the fee simple title to the beds of the streets and the roads and flood plains and open space where applicable; (3) that no building or similar structure of any kind shall be erected on or over the said easements and rights-of-way; (4) it is further agreed that maintenance of all waterways, drainage easements and/or flood plains shown hereon are the responsibility of the owner, its successors and assigns, except as to the 50' easement area shown as crossing Parcels G-1 and H-1.
 Witness our hands this 20th day of September, 1978.

[Signature] Authorized Agent
[Signature] Assistant Secretary

**CORRIDOR INDUSTRIAL PARK
 SECTION I
 PARCELS G-1, H-1, L-1, AND A
 PORTION OF THE PARK, UTILITY,
 AND DRAINAGE RESERVATION
 A RESUBDIVISION OF PARCELS G, H, AND L, AND
 A PORTION OF THE PARK, UTILITY AND
 DRAINAGE RESERVATION.
 SHEET 1 OF 1
 6TH ELECTION DISTRICT OF HOWARD COUNTY, MD.
 SCALE: 1"=100' DATE: August 24, 1978**

491

F-79-92