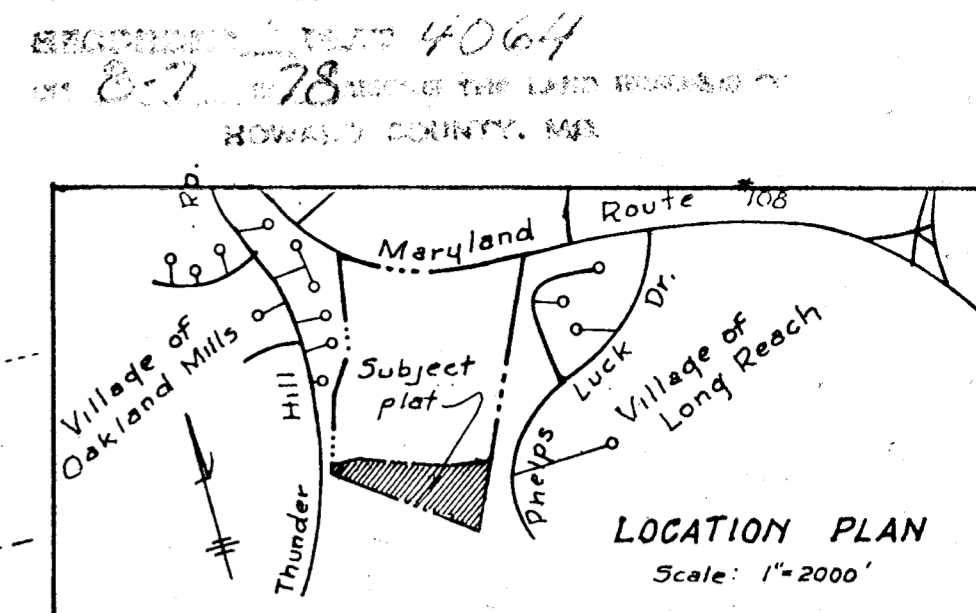


COORDINATES					
No.	North	East	No.	North	East
101	504788.58	849311.75	544	505955.23	848822.44
102	506049.48	847879.04	948	505777.30	848570.35
103	506255.71	847837.45	949	505749.18	848579.71
104	506272.11	847849.97	951	505670.73	848532.78
105	506269.51	847782.80	952	505680.89	848571.16
204	505148.38	849447.07	953	505536.00	848462.49
219	505688.99	849650.39	954	505628.00	848632.34
220	505788.63	849430.49	955	505671.19	848673.99
221	505604.51	849099.77	976	505284.94	849359.54
225	506342.48	847782.80	977	505420.70	849415.86
324	506271.91	848331.51	978	505420.58	849330.42
332	505814.14	848519.21	980	505371.25	849338.58
333	505801.47	848480.94	981	505302.55	849312.74
335	505715.11	848485.92	983	505307.00	849459.86
336	505745.61	848475.27	1270	505915.85	848809.68
337	505819.15	848458.61	1284	505187.40	849400.42
338	506059.54	848185.47	1285	505435.11	848832.37
340	506090.77	848168.90	1286	505157.73	849396.01
341	506034.47	848119.35	1305	505478.30	848874.02
343	506022.01	848152.44	1306	505421.61	848938.26
344	505781.62	848425.58	1308	505426.42	848974.23
345	505576.15	848416.86	1309	505453.79	848994.00
224	506302.42	847823.16	1310	505473.40	849006.68
1828	506399.74	848206.17	1312	505530.68	849001.47
			1313	505548.87	849087.55
			1314	505507.70	849075.39
531	506227.23	848469.46	1315	505424.50	849034.52
532	506155.88	848446.35	1316	505397.13	849014.74
533	506040.41	848592.50	1318	505361.48	849021.45
540	506012.24	848646.44	1319	505247.12	849269.75
			1321	505265.15	849301.19
			1322	505253.51	849349.82
			1324	505222.99	849369.52

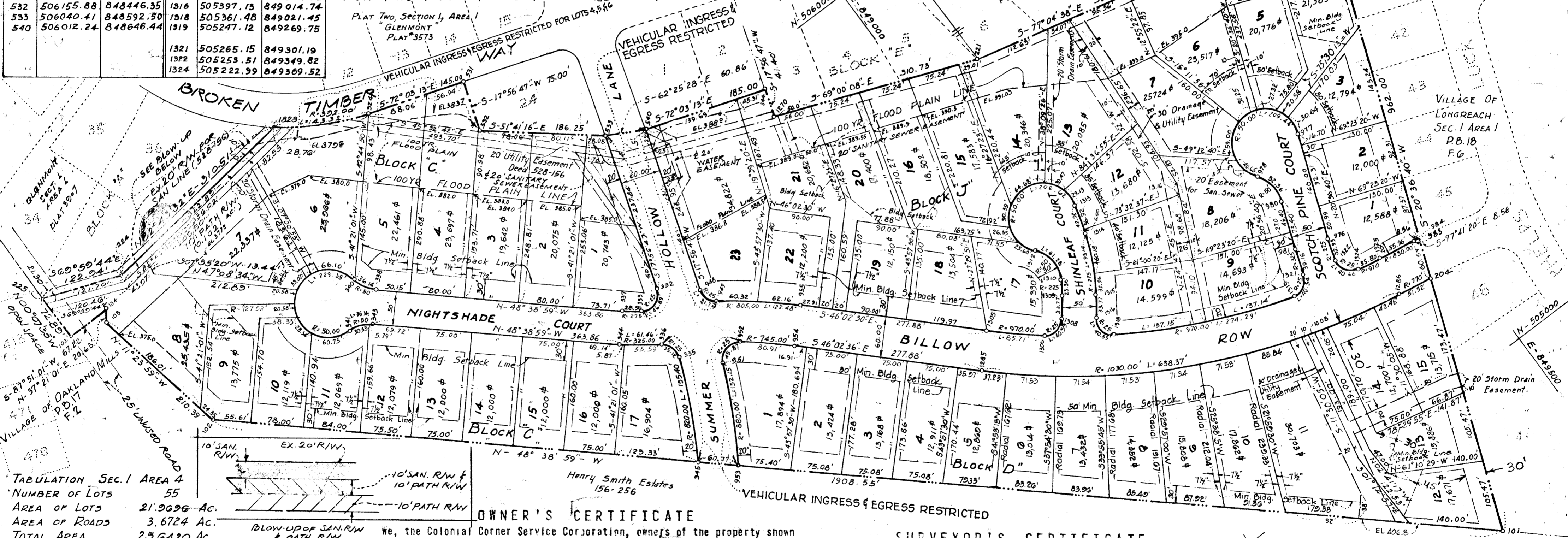
CURVE DATA									
From	To	Radius	Length	Δ	Tan.	Chd Brq & Distance			
324	1828	392.0'	143.32'	20°56'52"	72.47'	NG1°34'46"W/42.52'			
340	341	50.0'	229.35'	262°49'08"					
338	340	50.0'	36.14'	41°24'34"	18.90'	N-27°56'42"W 35.36'			
341	343	50.0'	36.14'	41°24'34"	18.90'	S-69°21'16"E 35.36'			
333	337	275.0'	28.50'	05°56'13"	14.26'	N-51°37'05"W 28.48'			
332	333	25.0'	46.89'	127°28'00"	34.07'	S-71°40'08"W 40.31'			
344	336	325.0'	55.59'	10°50'06"	30.82'	S-54°04'02"E 61.37'			
336	335	25.0'	35.12'	80°28'48"	21.16'	S-19°14'41"E 32.30'			
335	345	820.0'	155.40'	10°51'38"	77.93'	S-26°25'28"W 155.17'			
963	951	880.0'	152.15'	9°54'23"	76.27'	N-27°31'12"E 151.96'			
951	952	25.0'	45.87'	105°08'07"	32.66'	N-75°10'04"E 39.70'			
952	954	745.0'	80.91'	6°15'22"	40.50'	S-49°09'11"E 80.88'			
1285	1286	1030.0'	638.37'	35°30'38"	329.81'	S-63°47'49"E 628.20'			
1286	204	770.0'	51.92'	3°51'47"	25.97'	S-79°37'14"E 51.91'			
1305	1306	970.0'	85.71'	05°03'45"	42.88'	S-48°34'22"E 85.68'			
1306	1308	25.0'	40.59'	93°01'59"	26.36'	N-82°22'46"E 36.28'			
1309	1310	225.0'	23.36'	05°56'58"	11.69'	N-32°53'17"E 23.35'			
1310	1312	50.0'	61.28'	70°13'26"	35.16'	N-05°11'55"W 57.52'			
1312	1313	50.0'	206.62'	236°46'01"					
1314	1315	275.0'	93.14'	19°24'23"	47.02'	S-26°09'35"W 92.70'			
1316	1318	25.0'	40.59'	93°01'58"	26.36'	S-10°39'13"E 36.28'			
1318	1319	970.0'	274.29'	16°12'06"	138.07'	S-65°16'15"E 273.38'			
1319	1321	25.0'	40.54'	92°55'18"	26.31'	N-60°10'05"E 36.25'			
1321	981	325.0'	39.16'	06°54'17"	19.61'	N-17°09'32"E 39.14'			
980	978	50.0'	52.36'	60°00'00"	28.87'	S-9°23'20"E 50.00'			
978	977	50.0'	209.44'	240°00'00"					
976	1322	275.0'	32.93'	06°51'37"	16.48'	S-17°10'52"W 32.91'			
1322	1324	250.0'	40.66'	93°11'19"	26°43'	S-32°30'36"E 36.35'			
1324	1325	970.0'	35.80'	02°06'52"	17.90'	S-80°29'41"E 35.79'			
1325	983	830.0'	55.96'	03°51'47"	27.99'	S-79°37'14"E 55.95'			
948	949	25.0'	31.72'	72°42'20"	18.40'	S-18°24'22"E 29.64'			
949	955	805.0'	122.48'	8°43'03"	61.37'	S-50°24'01"E 122.36'			

COORDINATES
All Coordinates are based on the Maryland State Grid



The lots or parcels shown on this plat are subject to the supplemental sewer in-aid-of-construction charges created by Section 20.311.A of the Howard County Code and Executive Order No. 72-9.

NOTE: Maintenance of all storm drains and/or drainage easements shown hereon other than storm drain in road rights of way, are the responsibility of the property owner, its successors and assigns.



TABULATION SEC. 1 AREA 4
NUMBER OF LOTS 55
AREA OF LOTS 21.9696 AC.
AREA OF ROADS 3.6724 AC.
TOTAL AREA 25.6420 AC.

APPROVED: PUBLIC WATER AND PUBLIC SEWER, HOWARD CO., MD.
BY: *Ronald W. Broyles* 8-3-78
COUNTY HEALTH OFFICER DATE

APPROVED: HOWARD COUNTY OFFICE OF PLANNING AND ZONING
BY: *Richard E. Preudenberger* 8/3/78
DIRECTOR DATE

APPROVED: PUBLIC WATER, PUBLIC SEWER & STORM DRAINAGE SYSTEM & PUBLIC ROADS, HOWARD COUNTY DEPT. OF PUBLIC WORKS
BY: *Richard E. Preudenberger* 7/31/78
DIRECTOR DATE

OWNER'S CERTIFICATE
We, the Colonial Corner Service Corporation, owners of the property shown and described hereon adopt this plan of subdivision and the fee simple title to the beds of the streets and/or roads shown hereon;
and in consideration of the approval of this plat by the Howard County Office of Planning and Zoning, we, ourselves, our heirs, or assigns, do hereby give and grant unto Howard County, Maryland, the right and option to acquire for the consideration of One Dollar, the fee simple title to the beds of the streets and/or roads shown hereon, within the period of five years from the date of the recording of this plat among the Land Records of Howard County.
Witness our hands and seals, this day of *August* 1978
Robert E. Hecht, Sr., President
Colonial Corner Service Corporation
Fayette & St. Paul Sts., Balto. Md. 21207

SURVEYOR'S CERTIFICATE
I, Ronald W. Broyles, hereby certify that the Plan shown hereon is correct, that it is a part of the land which by Deed dated June 7, 1974 and recorded among the Land Records of Howard County, Maryland in Liber 685 Folio 562 was conveyed by H. A. Duncan & B. A. O'Neill to Colonial Corner Service Corporation. I further certify that the requirements of Section 3-108, Article 21 of the Annotated Code of Maryland (As Amended) as far as they relate to the making of this plat have been complied with.
Ronald W. Broyles 8/13/1978
Ronald W. Broyles, Reg. #3988 Date

PLAT # 4064
SECTION 1 AREA 4
GLENMONT
ELECTION DISTRICT #6 HOWARD COUNTY, MD.
SCALE 1"=100' DATE SEPT. 13, 1978