

COORDINATES			CURVE DATA							COORDINATES		
NO.	NORTH	EAST	NO.	RADIUS	Δ	ARC	TAN	CHORD	BEARING	NO.	NORTH	EAST
17	494931.44	841884.25	170-118	540.00	17°10'50"	161.92	81.57	161.32	N77°36'07"E	118	496713.41	841644.84
16	495150.36	841665.73	156-163	800.14	02°51'53"	40.00	20.01	40.00	N87°07'28"E	99	496803.90	841880.71
15	495180.40	841486.22	163-119	800.14	16°40'50"	232.95	117.30	232.12	N77°21'07"E	100	496710.54	841916.52
14	495515.06	841470.15	156-119	800.14	19°32'42"	272.95	137.81	271.63	S78°47'03"W	102	496684.58	841969.19
134	495546.17	841541.69	100-102	40.00	94°28'00"	65.94	43.23	58.73	S63°45'36"E	1000	496245.66	842014.72
156	496596.76	841491.22	102-103	1198.24	23°50'18"	498.53	252.93	494.95	S04°36'45"E	103	496191.23	842009.00
170	496678.78	841487.28	104-117	11534.16	04°35'04"	922.90	461.70	922.65	S05°00'60"W	104	495850.56	841965.33
			1000-103	1198.24	02°37'01"	64.73	27.37	54.73	S06°00'13"W	1001	496223.30	841549.21
										119	496649.60	841757.66
										163	496598.77	841531.17

NOTES:

- THIS PLAT AND THE COORDINATES SHOWN HEREON ARE BASED UPON TRAVERSE CONTROLS FOR COLUMBIA ESTABLISHED BY MAPS, INC. IN 1965 AND BY PURDUM AND JESCHKE IN 1968, WHICH CONTROLS WERE TIED TO MARYLAND BUREAU OF CONTROL SURVEY MONUMENTS AND TO U.S. COAST & GEODETIC SURVEY MONUMENTS IN THE COLUMBIA AREA.
- = DENOTES 4"X4" CONCRETE MONUMENT.
- MINIMUM BUILDING SETBACK RESTRICTIONS FROM PROPERTY LINES AND THE RIGHT-OF-WAY OF ANY PUBLIC ROAD OR STREET TO BE IN ACCORDANCE WITH THE RECORDED FINAL DEVELOPMENT PLAN CRITERIA PHASE 14D.
- THE LOTS OR PARCELS SHOWN ON THIS PLAT ARE SUBJECT TO THE SUPPLEMENTAL SEWER IN-AID-OF-CONSTRUCTION CHARGE CREATED BY SECTION 20.311A OF HOWARD COUNTY CODE AND TO EXECUTIVE ORDER NO. 72-9.

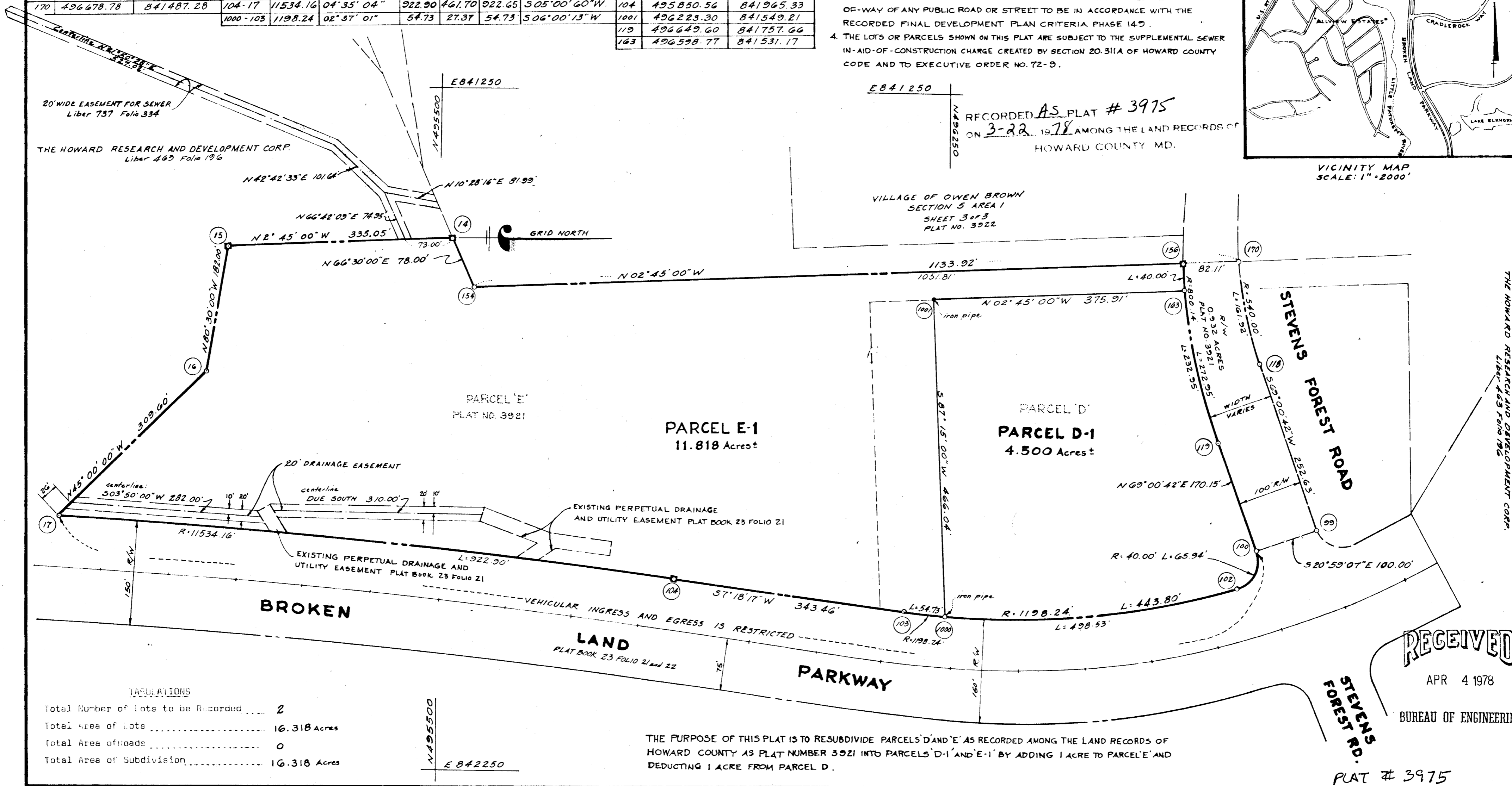
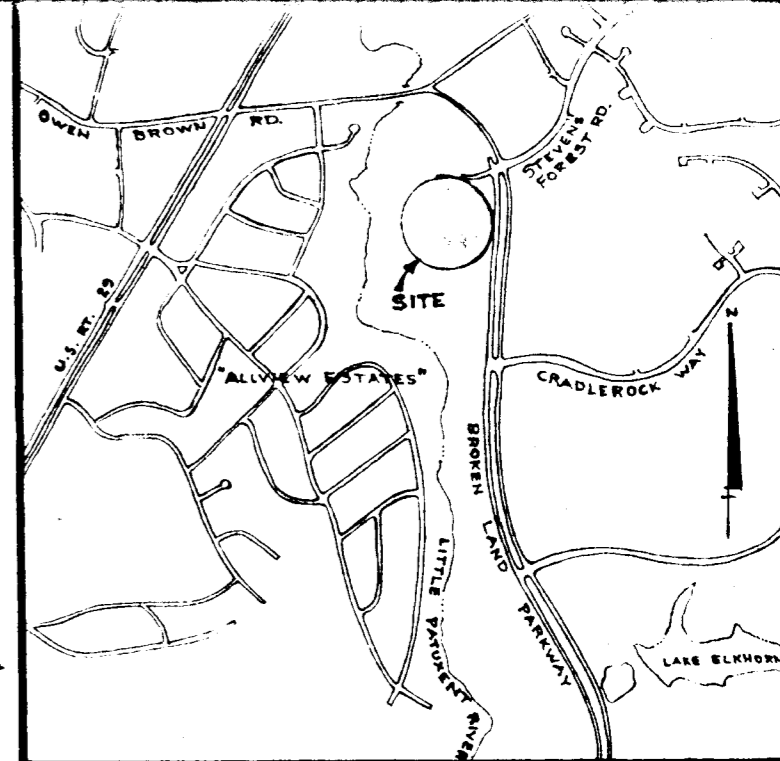


TABLE OF LOTS

Total Number of lots to be Recorded	2
Total Area of lots	16.318 Acres
Total Area of roads	0
Total Area of Subdivision	16.318 Acres

THE PURPOSE OF THIS PLAT IS TO RESUBDIVIDE PARCELS D AND E AS RECORDED AMONG THE LAND RECORDS OF HOWARD COUNTY AS PLAT NUMBER 3921 INTO PARCELS D-1 AND E-1 BY ADDING 1 ACRE TO PARCEL E AND DEDUCTING 1 ACRE FROM PARCEL D.

APPROVED for public sewerage systems, and public water systems, Howard County Health Department.
[Signature] 3-15-78
 Director

APPROVED for public water, public sewerage, storm drainage systems and public roads. Howard County Department of Public Works.
[Signature] 3-15-78
 Director

SURVEYOR'S CERTIFICATE
 I HEREBY CERTIFY THAT THE FINAL PLAT HEREON IS CORRECT; THAT IT IS A SUBDIVISION OF PART OF LANDS CONVEYED BY C. AILEEN AMES TO THE HOWARD RESEARCH AND DEVELOPMENT CORPORATION BY DEED DATED DECEMBER 13, 1966 AND RECORDED AMONG THE LAND RECORDS OF HOWARD COUNTY, MARYLAND IN LIBER 463, FOLIO 196, AND BY HOWARD RESEARCH AND DEVELOPMENT CORPORATION TO RELIABLE STORES CORPORATION BY DEED DATED DECEMBER 15, 1977 AND RECORDED AMONG THE LAND RECORDS OF HOWARD COUNTY, MARYLAND IN LIBER 869 FOLIO 711, AND THAT ALL MONUMENTS ARE IN PLACE AS SHOWN, IN ACCORDANCE WITH THE ANNOTATED CODE OF MARYLAND AS AMENDED.
[Signature] 3-23-78
 H. Richard Moale - PROPERTY LINE SURVEYOR No. 77
 THE ROUSE COMPANY
 COLUMBIA, MARYLAND 21044

DEDICATION FOR CORPORATIONS
 WE, THE HOWARD RESEARCH & DEVELOPMENT CORPORATION, A MARYLAND CORPORATION, BY WALTER E. WOODFORD, JR., AUTHORIZED AGENT AND FRANCIS R. HUNTER, JR., ASSISTANT SECRETARY, AND RELIABLE STORES CORPORATION, A DELAWARE CORPORATION, OWNERS OF THE PROPERTY SHOWN AND DESCRIBED HEREON HEREBY ADOPT THIS PLAN OF SUBDIVISION, AND IN CONSIDERATION OF THE APPROVAL OF THIS FINAL PLAT BY THE OFFICE OF PLANNING AND ZONING ESTABLISH THE MINIMUM BUILDING RESTRICTION LINES AND GRANT UNTO HOWARD COUNTY, MARYLAND, ITS SUCCESSORS AND ASSIGNS (1) THE RIGHT TO LAY, CONSTRUCT, AND MAINTAIN SEWERS, DRAINS, WATER PIPES AND OTHER MUNICIPAL UTILITIES AND SERVICES IN AND UNDER ALL ROADS AND STREET RIGHTS-OF-WAY AND THE SPECIFIC EASEMENTS AREAS SHOWN HEREON; (2) DEDICATE TO PUBLIC USE THE BEDS OF THE STREETS AND/OR ROAD AND FLOOD PLAINS AND OPEN SPACE WHERE APPLICABLE AND FOR ONE DOLLAR (\$1.00) CONSIDERATION HEREBY GRANT THE RIGHT AND OPTION TO HOWARD COUNTY TO ACQUIRE THE FEE SIMPLE TITLE TO THE BEDS OF THE STREETS AND THE ROADS AND FLOOD PLAINS AND OPEN SPACE WHERE APPLICABLE; (3) THAT NO BUILDING OR SIMILAR STRUCTURE OF ANY KIND SHALL BE ERRECTED ON OR OVER THE SAID EASEMENTS AND RIGHTS-OF-WAY; (4) IT IS FURTHER AGREED THAT MAINTENANCE OF ALL WATERWAYS, DRAINAGE EASEMENTS AND/OR FLOOD PLAINS SHOWN HEREON ARE THE RESPONSIBILITY OF THE PROPERTY OWNER, ITS SUCCESSORS AND ASSIGNS. WITNESS OUR HANDS THIS DAY OF 1978
 RELIABLE STORES CORPORATION:
[Signature]
 AUTHORIZED AGENT
 THE HOWARD RESEARCH & DEVELOPMENT CORPORATION:
[Signature]
 AUTHORIZED AGENT

COLUMBIA
 VILLAGE OF OWEN BROWN
 SECTION 5
 AREA 1
 PARCELS E-1 AND D-1
 A RESUBDIVISION OF PARCELS E AND D
 SHEET 1 OF 1
 6" ELECTION DISTRICT OF HOWARD COUNTY, MARYLAND
 SCALE: 1" = 100' DATE: Dec. 23, 1977