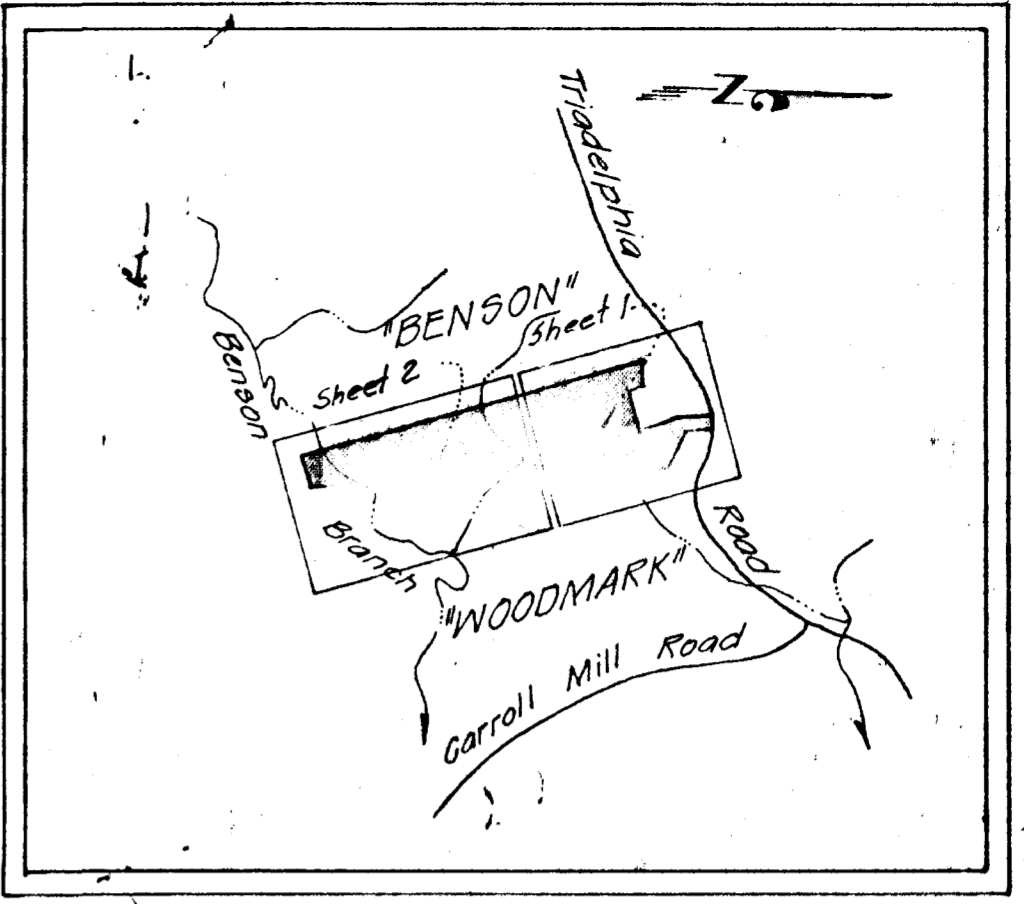
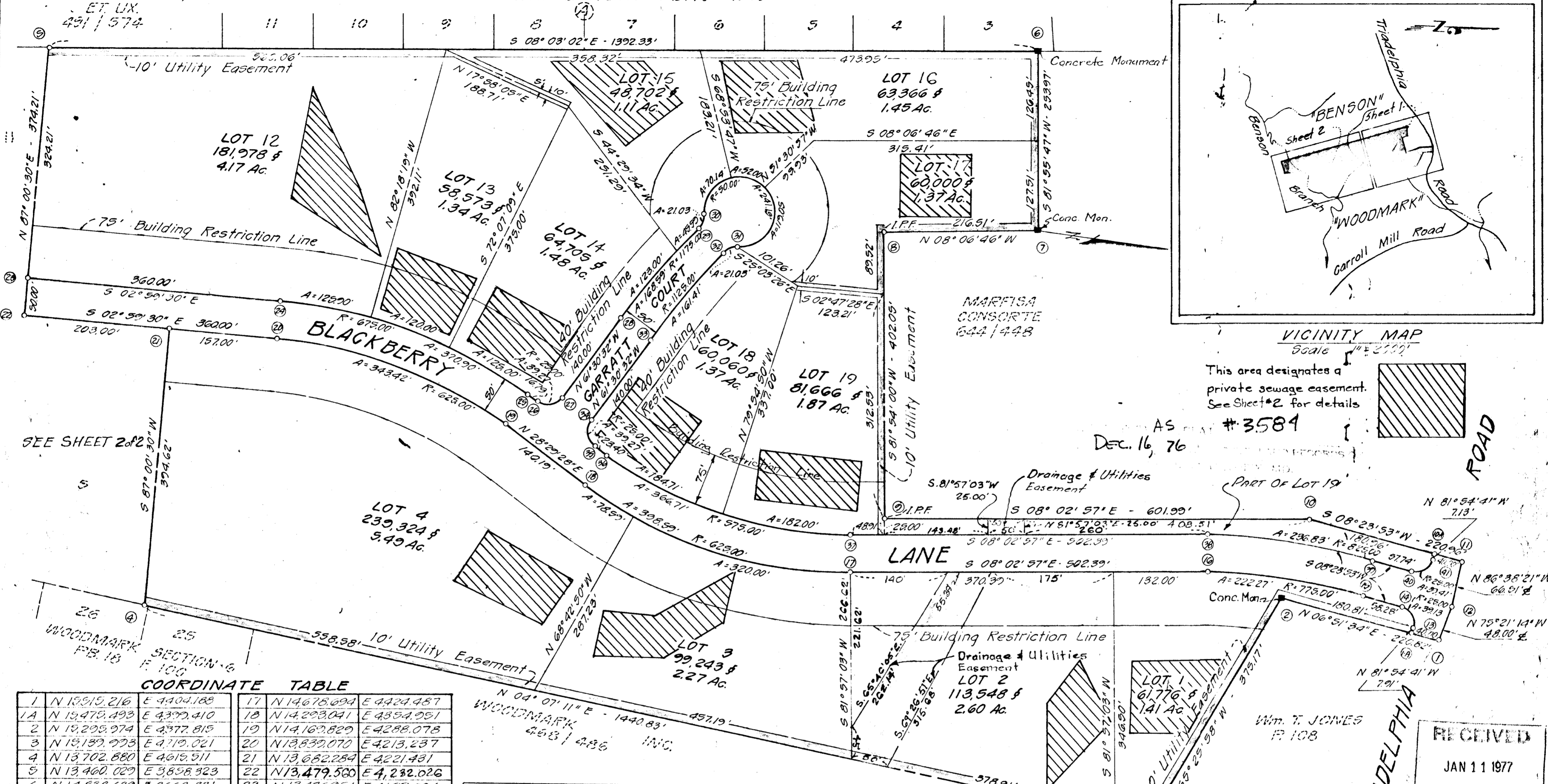


CARL G. HALL,
ET UX.
491 / 574

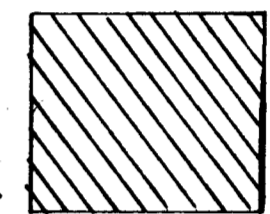
SECTION ONE BENSON PB. 18 179



VICINITY MAP
Scale 1" = 200'

This area designates a private sewage easement. See Sheet #2 for details.

AS #3584
DEC. 16, 76



ROAD

COORDINATE TABLE

1	N 13,919.216	E 4404.188	17	N 14,678.694	E 4424.487
1A	N 13,979.493	E 4399.410	18	N 14,293.041	E 4354.951
2	N 13,299.974	E 4377.815	19	N 14,169.820	E 4288.078
3	N 13,139.923	E 4179.021	20	N 13,839.070	E 4213.237
4	N 13,702.880	E 4619.511	21	N 13,682.284	E 4221.431
5	N 13,460.029	E 3858.323	22	N 13,479.560	E 4,232.026
6	N 14,838.639	E 3663.331	23	N 13,476.951	E 4182.094
7	N 14,874.294	E 3914.784	24	N 13,836.460	E 4163.309
8	N 14,659.952	E 3945.338	25	N 14,193.680	E 4244.133
9	N 14,716.602	E 4343.980	26	N 14,208.433	E 4252.140
10	N 13,312.661	E 4259.087	27	N 14,242.331	E 4242.094
10-A	N 13,491.680	E 4285.516	28	N 14,309.114	E 4119.049
11	N 13,931.252	E 4291.398	29	N 14,399.869	E 3977.148
12	N 13,927.393	E 4357.748	30	N 14,404.327	E 3957.228
13	N 13,476.607	E 4391.977	31	N 14,497.771	E 3997.081
14	N 13,499.507	E 4363.327	32	N 14,499.951	E 4007.037
15	N 13,397.846	E 4354.814	33	N 14,353.059	E 4142.900
16	N 13,176.139	E 4354.139	34	N 14,286.276	E 4269.949
			35	N 14,276.822	E 4299.843
			36	N 14,316.892	E 4311.007
			37	N 14,671.693	E 4374.979
			38	N 13,169.138	E 4304.632
			39	N 13,409.149	E 4305.351
			40	N 13,462.275	E 4313.784
			41	N 13,490.678	E 4292.970

NOTE: The origin of the coordinates shown hereon is assumed.

FOR CURVE DATA SEE SHEET 2

Maintenance of all storm drains and/or drainage easements shown hereon are the responsibility of the property owner, its successors and assigns.

AREA DATA

SHEET	TOTAL AREA	STREETS	AREA LOTS	NO LOTS	AREA OF PARK
1	29.089 AC	3.080 AC	26.009 AC	12	-
2	28.092 AC	0.705 AC	18.298 AC	7	9.090 AC
TOTAL	57.182 AC	3.785 AC	44.307 AC	19	9.090 AC

RECEIVED
JAN 11 1977
ENGINEERING
HOWARD COUNTY
DEPT. PUBLIC WORKS

SHEET 1 OF 2
SECTION 1
BRIAR HILL PLAT #3584

3 RD ELECTION DISTRICT
HOWARD COUNTY MARYLAND
SCALE 1" = 100' 18 FEB. 1975

APPROVED: For private water and private sewerage systems, Howard County Health Department.
Joyahn Boyles 12-10-76
County Health Officer Date

APPROVED: Howard County Office of Planning and Zoning.
[Signature] 12-13-76
Director Date

APPROVED: Howard County Dept. of Public Works for public storm drainage systems and public roads.
[Signature] 12-14-76
Director Date

OWNERS CERTIFICATE

We, The Briar Hill Corporation a Maryland Corporation by W. Riley Whorton, President, M. Lee Sutherland, Vice Pres, owners of the property shown and described hereon, hereby adopt this plan of subdivision, and in consideration of the approval of this Final Plat by the Office of Planning and Zoning, establish the minimum building restriction lines and dedicate the streets, alleys, walkways, and other easements, widening strips and right-of-ways, and open space where applicable, to public use. All easements, or rights-of-way affecting the property are included in this plan of subdivision.

Witness our hands this 12th day of March 1975.
W. Riley Whorton, Pres. M. Lee Sutherland, V.P.

SURVEYOR'S CERTIFICATE

I hereby certify that the Final Plat shown hereon is correct; that it is a subdivision of part of the lands conveyed by The Equitable Trust Company, Personal Representative of the Estate of George P. Garrett, to The Briar Hill Corporation deed dated 10 February 1975 and recorded in the Land Records of Howard County, in Liber 711, of Folio 121, and that all monuments are in place as shown, in accordance with the Annotated Code of Maryland, as amended.

4-8-75
J. [Signature]

ENGINEER - SURVEYOR
TOUPS & LOEDERMAN
1370 FIGGARD DRIVE
ROCKVILLE, MARYLAND
301-840-1300

OWNER - DEVELOPER
BRIAR HILL CORPORATION
3721 GELDING LANE
OLNEY, MARYLAND
301-714-0627

