

The Lots or Parcels shown on this plat are subject to the supplemental sewer in-kind of construction charge created by Section 10.311.A of the Howard County Code of Executive Order No. 72-5.

TOTAL TABULATION (PLATS 1&2)

TOTAL NUMBER OF LOTS	82
TOTAL AREA OF LOTS	28.35 ACRES
TOTAL AREA OF ROADS	7.65 ACRES
TOTAL AREA	36.00 ACRES

TABULATION PLAT 1

NUMBER OF LOTS	30
AREA OF LOTS	11.8165 ACRES
AREA OF ROADS	3.3512 ACRES
TOTAL AREA	15.1675 ACRES

SURVEYOR'S CERTIFICATE

I, Ronald W. Broyles, hereby certify that the Plan shown hereon is correct, that it is a part of the Land which by Deed dated June 7, 1974, and Recorded among the Land Records of Howard County, Maryland in Liber 685 Folio 562 was conveyed by H.A. Duncan & B.A. O'Neill to Colonial Corner Service Corporation. I further certify that the requirements of Section 3-108, Article 21 of the Annotated Code of Maryland (As Amended) as far as they relate to the making of this plat have been complied with.

Ronald W. Broyles
Ronald W. Broyles, Reg. #3989

Date

OWNER CERTIFICATE

We, the Colonial Corner Service Corporation, owners of the property shown and described hereon adopt this plan of subdivision and the fee simple title to the beds of the streets and/or roads shown hereon, including the land dedicated for the widening of Md. Route 108; and in consideration of the approval of this plat by the Howard County Office of Planning and Zoning, we, ourselves, our heirs, or assigns, do hereby give and grant unto Howard County, Maryland, the right and option to acquire for the consideration of One Dollar, the fee simple title to the beds of the streets and/or roads shown hereon, within the period of five years from the date of the recording of this plat among the Land Records of Howard County. Witness our hands and seals, this day of June 30, 1976.

Robert E. Hecht Sr., President
Colonial Corner Service Corporation
Fayette & St. Paul Sts. Baltimore, Md. 21202

6-30-76
Date

NOTE: Maintenance of all storm drains and/or drainage easements shown hereon, other than storm drains in road rights of way are the responsibility of the property owner, its successors and assigns.

COORDINATES

N#	North	East	N#	North	East
111	508350.64	848661.30	259	507384.64	848636.56
110	507297.39	848391.50	261	507405.70	848608.18
112	508379.43	848670.85	264	507336.54	848622.50
113	507954.21	848058.70	265	507257.17	848085.41
114	507894.20	848155.46	272	507200.07	848071.75
115	507784.35	848052.26	273	507554.19	848004.31
221	507707.27	848056.29	368	507258.48	848022.10
222	507673.87	848072.48	373	507141.14	848125.27
230	507610.53	848021.22	428	507588.15	848091.31
231	507627.72	848051.00	432	507434.23	848047.00
233	507720.01	848026.45	434	507387.18	848019.30
234	507702.20	848063.24	436	507233.47	848002.52
236	507627.88	848033.92	439	507039.88	848008.82
237	507658.30	848049.13	450	507035.15	848005.12
238	507748.30	848004.88	461	507186.85	848144.03
239	507772.07	848022.95	791	507504.54	848005.08
241	507804.87	848069.79	792	507522.70	848007.57
242	507754.07	848114.97	793	507549.70	848000.53
244	507738.21	848146.21	800	507711.02	848044.85
245	507714.43	848186.09	801	507889.27	848057.14
246	507810.38	848058.59	802	507851.51	848000.03
248	507950.81	848047.19	797	507631.55	848021.51
249	507918.33	848064.41	802	507848.84	848003.01
251	507854.01	848019.87	805	507844.06	848181.88
252	507871.83	848050.75	125	508321.94	848646.93
254	507967.20	848079.47			
255	507949.58	848058.59			
257	507271.01	848072.15			
258	507301.88	848044.93			

CURVE DATA

From	To	Radius	Length	Δ	Tan.	Chd Brg & Dist.
233	234	25.00'	39.89'	91°25'00"	25.63'	S68°00'24"W 35.79'
234	236	175.00'	72.24'	23°39'06"	36.64'	N54°27'33"W 71.73'
236	241	50.00'	36.14'	41°24'34"	18.90'	N21°55'43"W 35.34'
241	242	50.00'	36.14'	202°45'08"		
242	244	50.00'	36.14'	41°24'34"	18.90'	S63°20'17"E 35.36'
244	245	225.00'	59.36'	25°18'20"	50.52'	S55°17'14"E 58.58'
245	237	225.00'	37.00'	84°47'54"	32.89'	S25°32'38"E 39.71'
237	236	25.00'	103.00'	91°00'10"	9.01'	S16°21'20"W 18.03'
236	234	25.00'	39.27'	50°00'00"	25.00'	S60°15'15"W 35.96'
234	233	25.00'	36.14'	41°24'34"	18.90'	N63°26'28"W 35.36'
233	232	50.00'	229.35'	262°43'08"		
232	204	50.00'	36.14'	41°24'34"	18.90'	N85°08'58"E 35.36'
204	267	25.00'	39.27'	50°00'00"	25.00'	S29°08'45"E 35.36'
267	268	25.00'	39.27'	50°00'00"	25.00'	S60°15'15"W 35.36'
268	269	25.00'	39.27'	50°00'00"	25.00'	S29°08'45"E 35.36'
269	270	25.00'	39.27'	50°00'00"	25.00'	S60°15'15"W 35.36'
270	271	25.00'	39.27'	50°00'00"	25.00'	S29°08'45"E 35.36'
271	272	25.00'	39.27'	50°00'00"	25.00'	S60°15'15"W 35.36'
272	273	25.00'	39.27'	50°00'00"	25.00'	S29°08'45"E 35.36'
273	274	25.00'	39.27'	50°00'00"	25.00'	S60°15'15"W 35.36'
274	275	25.00'	39.27'	50°00'00"	25.00'	S29°08'45"E 35.36'
275	276	25.00'	39.27'	50°00'00"	25.00'	S60°15'15"W 35.36'
276	277	25.00'	39.27'	50°00'00"	25.00'	S29°08'45"E 35.36'
277	278	25.00'	39.27'	50°00'00"	25.00'	S60°15'15"W 35.36'
278	279	25.00'	39.27'	50°00'00"	25.00'	S29°08'45"E 35.36'
279	280	25.00'	39.27'	50°00'00"	25.00'	S60°15'15"W 35.36'
280	281	25.00'	39.27'	50°00'00"	25.00'	S29°08'45"E 35.36'
281	282	25.00'	39.27'	50°00'00"	25.00'	S60°15'15"W 35.36'
282	283	25.00'	39.27'	50°00'00"	25.00'	S29°08'45"E 35.36'
283	284	25.00'	39.27'	50°00'00"	25.00'	S60°15'15"W 35.36'
284	285	25.00'	39.27'	50°00'00"	25.00'	S29°08'45"E 35.36'
285	286	25.00'	39.27'	50°00'00"	25.00'	S60°15'15"W 35.36'
286	287	25.00'	39.27'	50°00'00"	25.00'	S29°08'45"E 35.36'
287	288	25.00'	39.27'	50°00'00"	25.00'	S60°15'15"W 35.36'
288	289	25.00'	39.27'	50°00'00"	25.00'	S29°08'45"E 35.36'
289	290	25.00'	39.27'	50°00'00"	25.00'	S60°15'15"W 35.36'

APPROVED: PUBLIC WATER AND PUBLIC SEWER HOWARD CO., MD.

BY: *Joseph M. Boyd* 11-17-76
COUNTY HEALTH OFFICER DATE

APPROVED: HOWARD COUNTY OFFICE OF PLANNING AND ZONING
BY: *Thomas J. Harris* 11-24-76
DIRECTOR DATE

APPROVED: PUBLIC WATER, PUBLIC SEWER & STORM DRAINAGE SYSTEM, & PUBLIC ROADS, HOWARD COUNTY DEPT. OF PUBLIC WORKS

BY: *P.J. Regan* 11-15-76
DIRECTOR DATE

Election District #6
Scale: 1"=100'

Howard County, Maryland
Aug. 1976

PLAT ONE, SECTION 1, AREA 1
Resubdivision of Winfield Sect. A
Plat Book 4 Folio 65

GLENMONT

REGISTRATION

SHEET 1 of 2

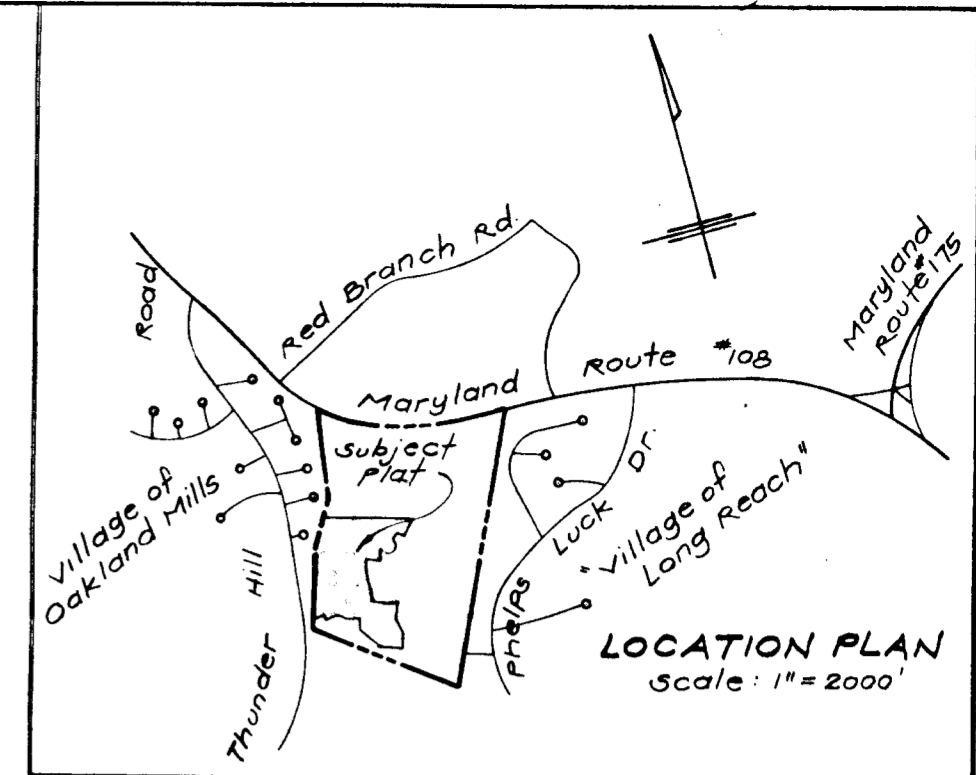
F-77-05

107652 TIC 3435-

Plot One Section 1 Area 1
GLENMONT

The lots or parcels shown on this plat are subject to the supplemental sewer in-aid-of-construction charges created by Section 20.311.A of the Howard Co. Code and Executive Order No. 72-5.

TABULATION PLAT 2
 NUMBER OF LOTS 52
 AREA OF LOTS 16.5345 ACRES
 AREA OF ROADS 4.2979 ACRES
 TOTAL AREA 20.8324 ACRES



SURVEYOR'S CERTIFICATE

I, Ronald W. Broyles, hereby certify that the Plan shown hereon is correct, that it is a part of the land which by Deed dated June 7, 1974 and recorded among the Land Records of Howard County, Maryland in Liber 685 Folio 562 was conveyed by H. A. Duncan & B.A. O'Neill to Colonial Corner Service Corporation. I further certify that the requirements of Section 3-108, Article 21 of the Annotated Code of Maryland (As Amended) as far as they relate to the making of this plat have been complied with.

Ronald W. Broyles
 Ronald W. Broyles, Reg. #3989 Date

OWNER'S CERTIFICATE

We, the Colonial Corner Service Corporation, owners of the property shown and described hereon adopt this plan of subdivision and the fee simple title to the lots of the streets and/or roads shown hereon, including the land dedicated for the widening of Md. Route 108; and in consideration of the approval of this plat by the Howard County Office of Planning and Zoning, we, ourselves, our heirs, or assigns, do hereby give and grant unto Howard County, Maryland, the right and option to acquire for the consideration of One Dollar, the fee simple title to the lots of the streets and/or roads shown hereon, within the period of five years from the date of the recording of this plat among the Land Records of Howard County. Witness our hands and seals, this day of June 30, 1976.

Robert E. Hecht, Sr.
 Robert E. Hecht, Sr., President
 Colonial Corner Service Corporation
 Fayette & St. Paul Sts., Balto, Md 21202

NOTE: Maintenance of all storm drains and/or drainage easements shown hereon, other than storm drain in road right of way, are the responsibility of the property owner, its successors and assigns.

RECORDED AS PLAT # 3573
 ON Dec 1 76

PLAT TWO, SECTION 1, AREA 1
 Resubdivision of Winfield Sect. A.
 Plat Book 4 Folio 65

GLENMONT

Election District #6
 Scale: 1"=100'

Howard County, Maryland
 Aug. 1976

APPROVED: PUBLIC WATER AND PUBLIC SEWER, HOWARD CO., MD.

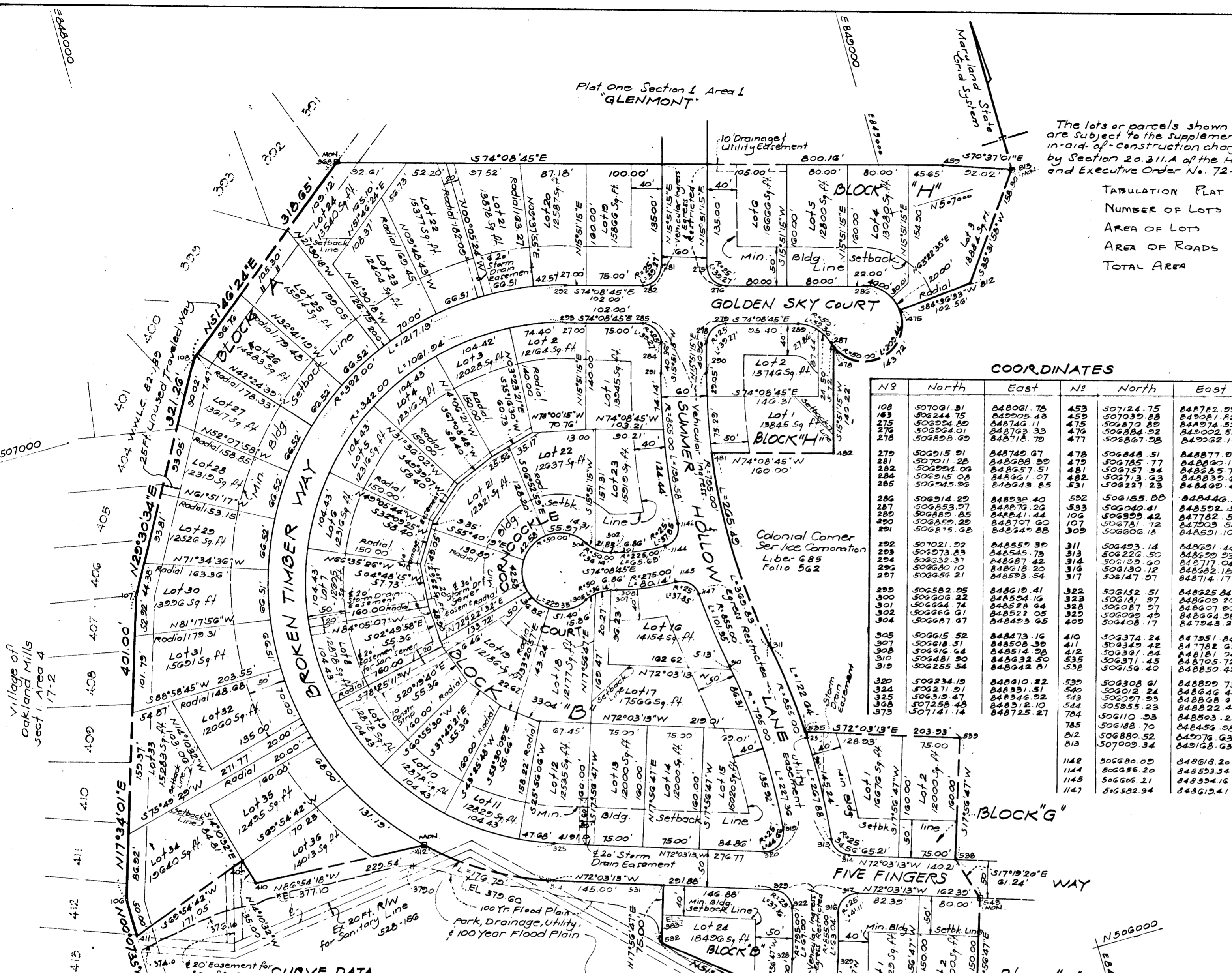
BY: *Joyella Broyles* 11-17-76
 COUNTY HEALTH OFFICER DATE

APPROVED: HOWARD COUNTY OFFICE OF PLANNING AND ZONING

BY: *Thomas A. Annis* 11-24-76
 DIRECTOR DATE

APPROVED: PUBLIC WATER, PUBLIC SEWER & STORM DRAINAGE SYSTEM & PUBLIC ROADS, HOWARD COUNTY DEPT. OF PUBLIC WORKS

BY: *P.J. Ragan* 11-15-76
 DIRECTOR DATE



COORDINATES

N#	North	East	N#	North	East
108	507021.31	848061.78	453	507124.75	848722.55
109	506244.75	848005.48	454	507030.88	849021.82
110	506524.89	848146.11	475	506870.85	848974.52
111	506824.01	848273.33	476	506884.52	849002.52
112	506858.69	848378.78	477	506867.28	849022.16
113					
114					
115					
116					
117					
118					
119					
120					
121					
122					
123					
124					
125					
126					
127					
128					
129					
130					
131					
132					
133					
134					
135					
136					
137					
138					
139					
140					
141					
142					
143					
144					
145					
146					
147					
148					
149					
150					
151					
152					
153					
154					
155					
156					
157					
158					
159					
160					
161					
162					
163					
164					
165					
166					
167					
168					
169					
170					
171					
172					
173					
174					
175					
176					
177					
178					
179					
180					
181					
182					
183					
184					
185					
186					
187					
188					
189					
190					
191					
192					
193					
194					
195					
196					
197					
198					
199					
200					
201					
202					
203					
204					
205					
206					
207					
208					
209					
210					
211					
212					
213					
214					
215					
216					
217					
218					
219					
220					
221					
222					
223					
224					
225					
226					
227					
228					
229					
230					
231					
232					
233					
234					
235					
236					
237					
238					
239					
240					
241					
242					
243					
244					
245					
246					
247					
248					
249					
250					
251					
252					
253					
254					
255					
256					
257					
258					
259					
260					
261					
262					
263					
264					
265					
266					
267					
268					
269					
270					
271					
272					
273					
274					
275					
276					
277					
278					
279					
280					
281					
282					
283					
284					
285					
286					
287					
288					
289					
290					
291					
292					
293					
294					
295					
296					
297					
298					
299					
300					
301					
302					
303					
304					
305					
306					
307					
308					
309					
310					
311					
312					
313					
314					
315					
316					
317					
318					
319					
320					
321					
322					
323					
324					
325					
326					
327					
328					
329					
330					
331					
332					
333					
334					
335					
336					
337					
338					
339					
340					
341					
342					
343					
344					
345					
346					
347					
348					
349					
350					
351					
352					
353					
354					
355					
356					
357					
358					
359					
360					
361					
362					
363					
364					
365					
366					
367					
368					
369					
370					
371					
372					
373					
374					
375					
376					
377					
378					
379					
380					
381					
382					
383					
384					
385					
386					
387					
388					
389					
390					
391					
392					
393					
394					
395					
396					
397					
398					
399					
400					
401					
402					
403					
404					
405					
406					
407					
408					
409					
410					
411					
412					
413					
414					
415					
416					
417					
418					
419					