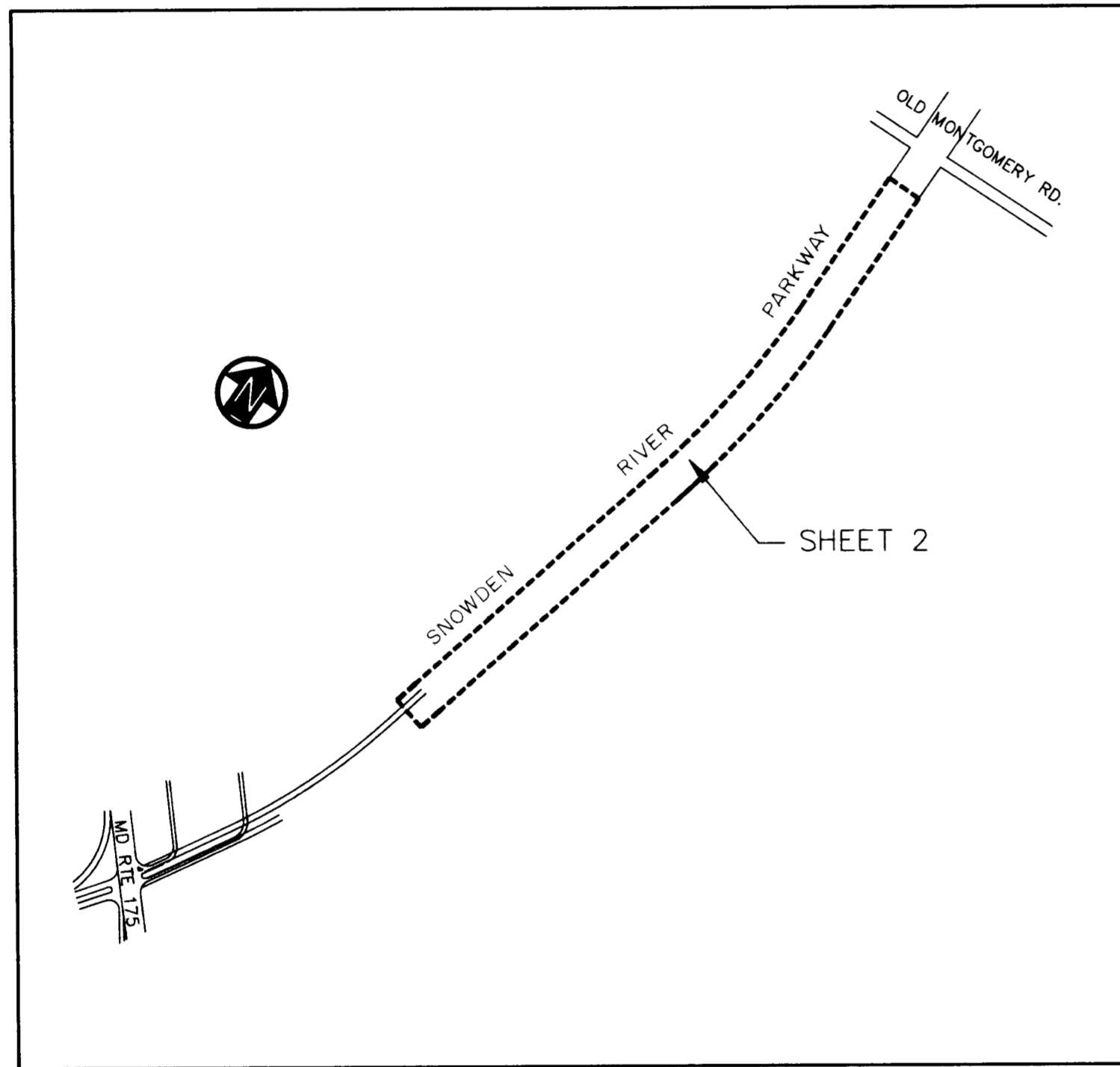
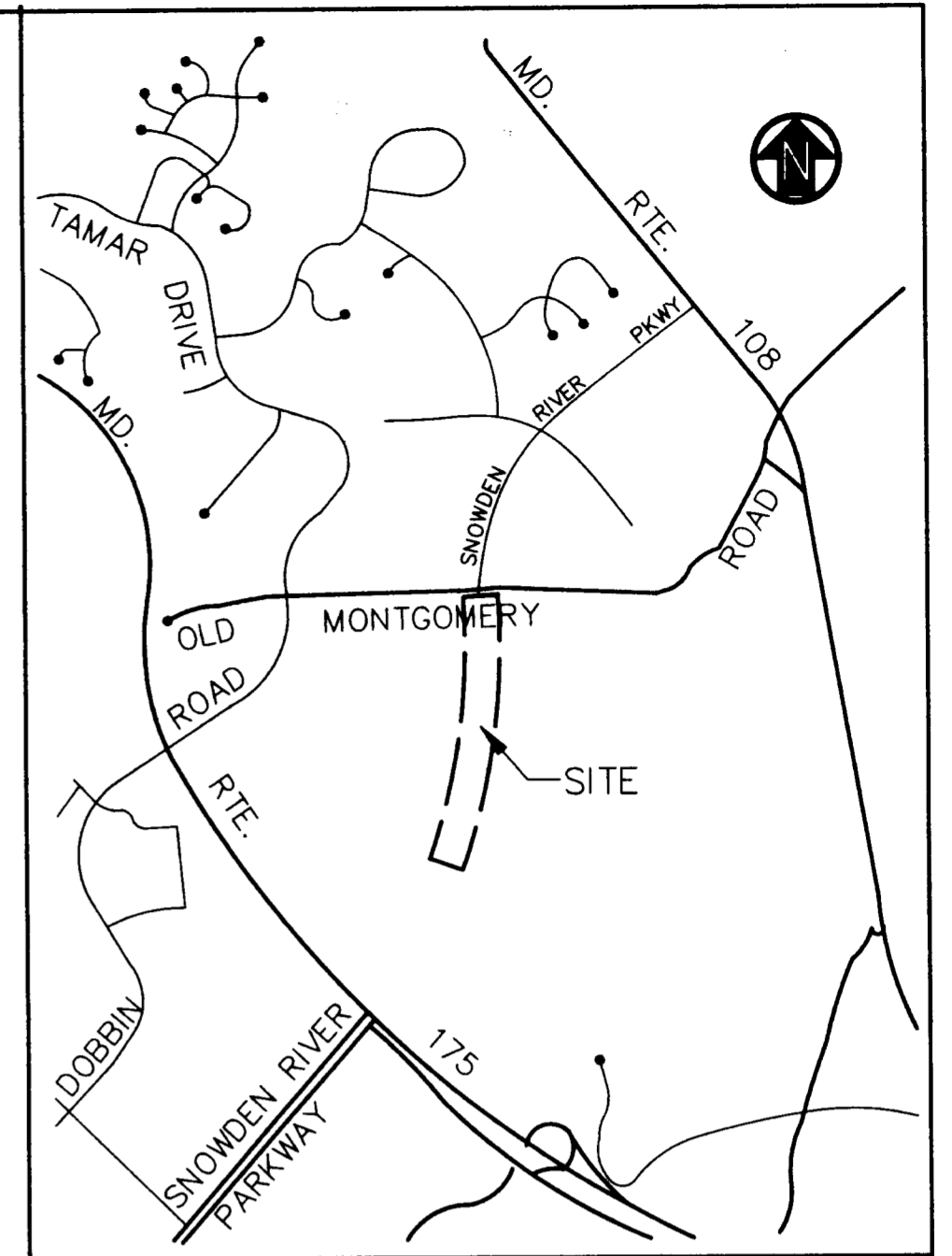


# VILLAGE OF LONGREACH SECTION 3-AREA 4 FINAL DEVELOPMENT PLANS



LOCATION MAP  
SCALE: 1" = 600'



VICINITY MAP  
SCALE: 1" = 2000'

LAND USE	ACRES
COMMERCIAL ROADWAY 10.404 AC.	10.404
<b>TOTAL FOR SECTION 3 AREA 4</b>	<b>10.404</b>

NOTE: All of the land within this Final Development Plan Phase shall be used as the right-of-way for a portion of Snowden River Parkway and may be used for roadway and utility easement purposes. For the purpose of land use allocations under the provisions of Section 122-A-8 of the Howard County Zoning Regulations, such land shall be classified as Employment Center Commercial use, as indicated on the maps contained in this Final Development Plan Phase.

# 89  
 12-29  
 FDP-197-3054A-1080

VILLAGE OF LONGREACH  
SECTION 3-AREA 4  
PETITIONER AND OWNER  
THE HOWARD RESEARCH AND DEVELOPMENT LAND CO.  
COLUMBIA, MARYLAND 21044

## COLUMBIA

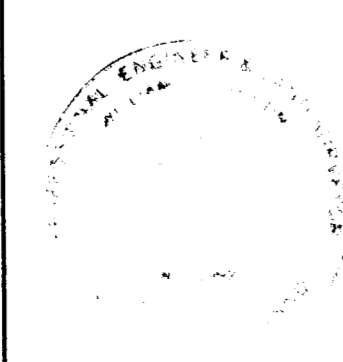
FINAL DEVELOPMENT PLAN  
PHASE 197 - PART III  
6th ELECTION DISTRICT HOWARD COUNTY, MD.

SCALE: AS SHOWN SHEET 1 OF 2

PLAT # 3054-A

FDP-197-3054A-1080

PREPARED IN ACCORDANCE WITH  
THE ZONING REGULATIONS OF  
HOWARD COUNTY ADOPTED  
AUGUST 2, 1985



*William D. Purdum*  
WILLIAM D. PURDUM, L.S.

BOARD OF COUNTY COMM. B.C.C. CASE 412 RESOLUTION APPROVED 8-10-65  
AMMENDED B.C.C. CASE 507 RESOLUTION APPROVED NOV. 4, 1968  
AMMENDED Z.B. CASE 606 RESOLUTION APPROVED NOV. 22, 1972  
AMMENDED Z.B. CASE 644 RESOLUTION APPROVED JAN. 7, 1974  
AMMENDED Z.B. CASE 693 RESOLUTION APPROVED DEC. 20, 1976  
AMMENDED Z.B. CASE 817 RESOLUTION APPROVED SEPT. 9, 1986

HOWARD COUNTY PLANNING BOARD

*Joseph S. Keister* 12/20/87 *Katherine Mann* 12/20/89  
H.C.P.B. EXEC. SECRETARY DATE M.C.P.B. CHAIRMAN DATE

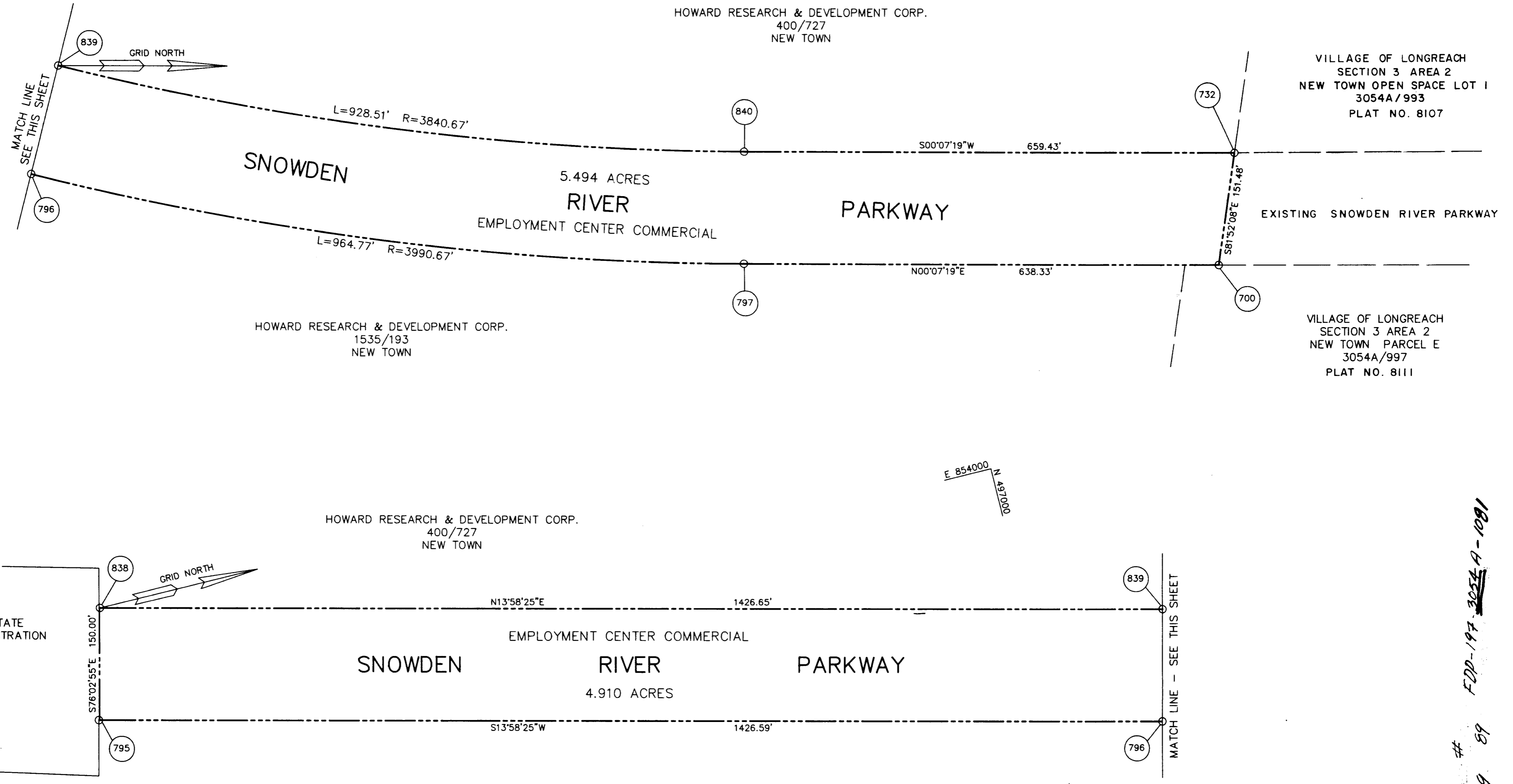
E 854000  
N 497000

E 854000  
N 498750

N 497000  
E 854500

E 854000  
N 497000

N 497000  
E 854500



POINT	NORTH	EAST
700	498736.1680	854503.9750
732	498757.5930	854354.0202
795	495758.3142	854040.0446
796	497142.6868	854384.5303
797	498097.8419	854502.6169

CURVE DATA							
838	839	840	796	797	795	796	797
495794.4788	497178.9081	498098.1610	495794.4788	497178.9081	498098.1610	495794.4788	497178.9081
853894.4695	854238.9693	854352.6172	853894.4695	854238.9693	854352.6172	853894.4695	854238.9693
CURVE	839 - 840	839 - 840	839 - 840	839 - 840	839 - 840	839 - 840	839 - 840
Δ	13°51'06"	13°51'06"	13°51'06"	13°51'06"	13°51'06"	13°51'06"	13°51'06"
RADIUS	3840.67'	3840.67'	3840.67'	3840.67'	3840.67'	3840.67'	3840.67'
TANGENT	466.53'	466.53'	466.53'	466.53'	466.53'	466.53'	466.53'
LENGTH	928.51'	928.51'	928.51'	928.51'	928.51'	928.51'	928.51'
CHD LENGTH	926.25'	926.25'	926.25'	926.25'	926.25'	926.25'	926.25'
CHD BEARING	N07°02'52"E	N07°02'52"E	N07°02'52"E	N07°02'52"E	N07°02'52"E	N07°02'52"E	N07°02'52"E

VILLAGE OF LONGREACH SECTION 3

PETITIONER AND OWNER  
THE HOWARD RESEARCH AND DEVELOPMENT LAND CO.  
COLUMBIA, MARYLAND 21044

COLUMBIA

FINAL DEVELOPMENT PLAN  
PHASE 197 - PART III  
6th ELECTION DISTRICT HOWARD COUNTY, MD.  
SCALE: 1" = 100' SHEET 2 OF 2

FDD-197 3054A-1001  
 12-29-89

PLAT # 3054A-FDD 197 3054A 1001