

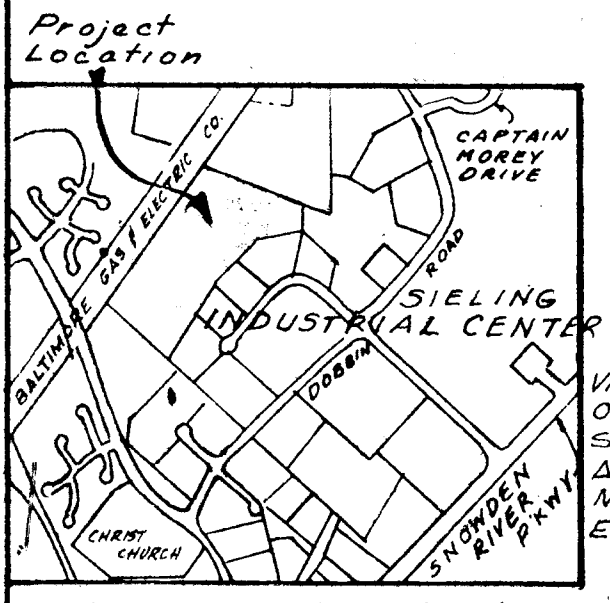
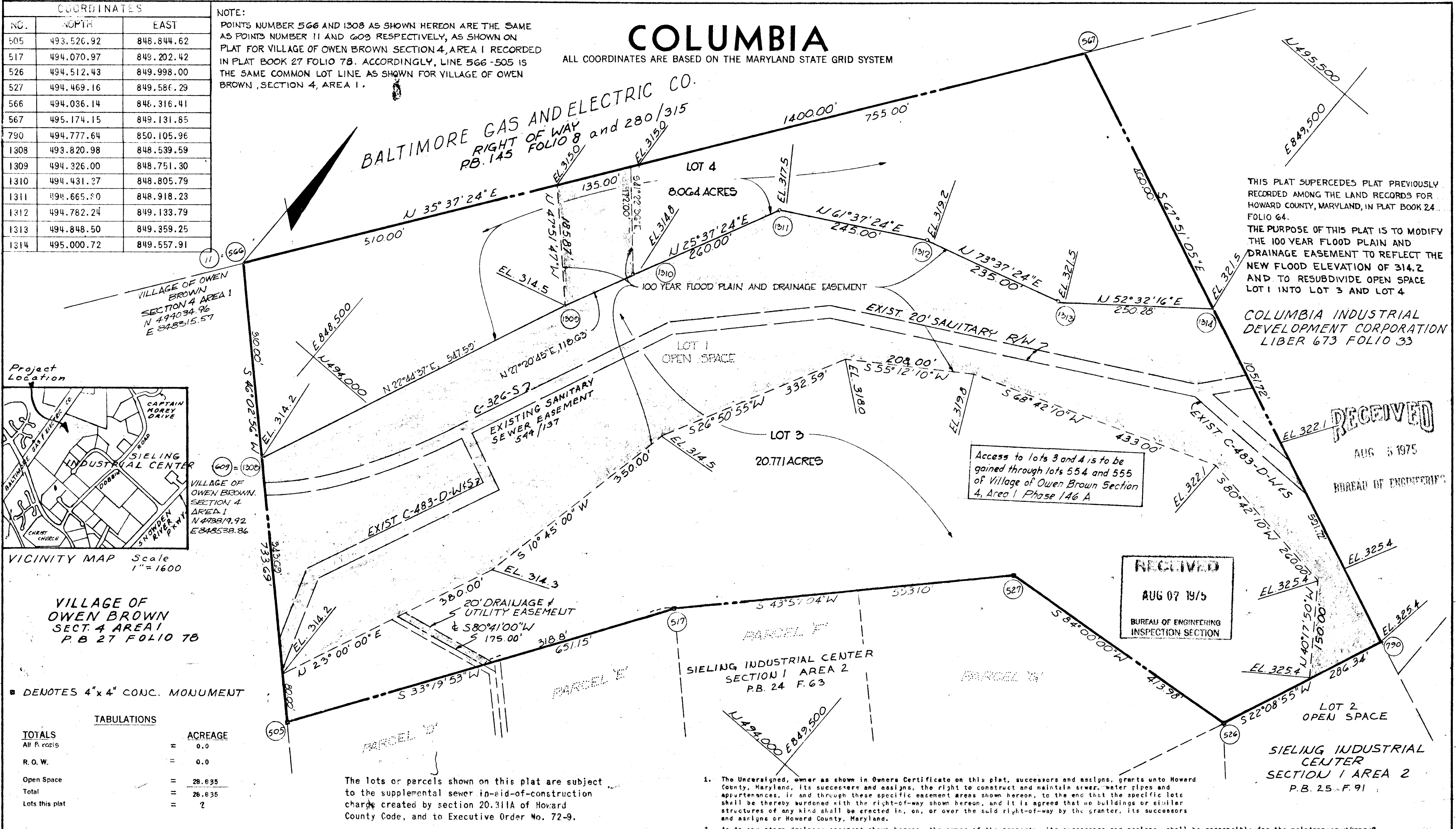
COORDINATES		
NO.	NORTH	EAST
505	493.526.92	848.844.62
517	494.070.97	849.202.42
526	494.512.43	849.998.00
527	494.469.16	849.586.29
566	494.036.14	846.316.41
567	495.174.15	849.131.85
790	494.777.64	850.105.96
1308	493.820.98	848.539.59
1309	494.326.00	848.751.30
1310	494.431.27	848.805.79
1311	494.665.50	848.918.23
1312	494.782.24	849.133.79
1313	494.848.50	849.359.25
1314	495.000.72	849.557.91

NOTE:  
POINTS NUMBER 566 AND 1308 AS SHOWN HEREON ARE THE SAME AS POINTS NUMBER 11 AND 609 RESPECTIVELY, AS SHOWN ON PLAT FOR VILLAGE OF OWEN BROWN SECTION 4, AREA 1 RECORDED IN PLAT BOOK 27 FOLIO 78. ACCORDINGLY, LINE 566-505 IS THE SAME COMMON LOT LINE AS SHOWN FOR VILLAGE OF OWEN BROWN, SECTION 4, AREA 1.

# COLUMBIA

ALL COORDINATES ARE BASED ON THE MARYLAND STATE GRID SYSTEM

BALTIMORE GAS AND ELECTRIC CO.  
RIGHT OF WAY  
PB. 145 FOLIO 8 and 280/315



VILLAGE OF OWEN BROWN SECT. 4 AREA 1 P.B. 27 FOLIO 78

■ DENOTES 4"x4" CONC. MONUMENT

TOTALS	ACREAGE
All Records	= 0.0
R.O.W.	= 0.0
Open Space	= 28.835
Total	= 28.835
Lots this plat	= 2

The lots or parcels shown on this plat are subject to the supplemental sewer in-aid-of-construction charge created by section 20.311A of Howard County Code, and to Executive Order No. 72-9.

- The undersigned, owner as shown in Owners Certificate on this plat, successors and assigns, grants unto Howard County, Maryland, its successors and assigns, the right to construct and maintain sewer, water pipes and appurtenances, in and through these specific easement areas shown hereon, to the end that the specific lots shall be thereby burdened with the right-of-way shown hereon, and it is agreed that no buildings or similar structures of any kind shall be erected in, on, or over the said right-of-way by the grantor, its successors and assigns or Howard County, Maryland.
- As to any storm drainage easement shown hereon, the owner of the property, its successors and assigns, shall be responsible for the maintenance thereof.

THIS PLAT SUPERCEDES PLAT PREVIOUSLY RECORDED AMONG THE LAND RECORDS FOR HOWARD COUNTY, MARYLAND, IN PLAT BOOK 24 FOLIO 64.  
THE PURPOSE OF THIS PLAT IS TO MODIFY THE 100 YEAR FLOOD PLAIN AND DRAINAGE EASEMENT TO REFLECT THE NEW FLOOD ELEVATION OF 314.2 AND TO RESUBDIVIDE OPEN SPACE LOT 1 INTO LOT 3 AND LOT 4  
COLUMBIA INDUSTRIAL DEVELOPMENT CORPORATION  
LIBER 673 FOLIO 33

RECEIVED  
AUG 5 1975  
BUREAU OF ENGINEERING

RECEIVED  
AUG 07 1975  
BUREAU OF ENGINEERING INSPECTION SECTION

APPROVED: FOR PUBLIC WATER AND PUBLIC SEWERAGE SYSTEMS, HOWARD COUNTY HEALTH DEPARTMENT.

COUNTY HEALTH OFFICER DATE

APPROVED: HOWARD COUNTY OFFICE OF PLANNING AND ZONING.  
PLANNING DIRECTOR DATE

APPROVED: FOR PUBLIC WATER AND PUBLIC SEWERAGE STORM DRAINAGE SYSTEMS AND PUBLIC ROADS - HOWARD COUNTY DEPARTMENT OF PUBLIC WORKS.  
DIRECTOR DATE

SURVEYOR'S, ENGINEER'S and OWNER'S CERTIFICATES

Surveyors Certificate: I hereby certify that the Final Plat shown hereon is correct; that it is a subdivision of part of the land conveyed by The Howard Research & Development Corporation to The Columbia Industrial Development Corporation by deed dated Feb. 7, 1974 and recorded in the land Records of Howard County, in Liber 673 of Folio 33, and that all monuments are in place as shown, in accordance with the Annotated Code of Maryland, as amended.  
Owner's Dedication Certificate: I, The Columbia Industrial Development Corporation, owner of the property shown and described hereon, hereby adopt this plan of subdivision, and in consideration of the approval of this plat by the Office of Planning and Zoning establish the minimum building restriction lines. All easements or rights-of-way affecting the property are included in this plan of subdivision. Witness our hand this 20th day of June, 1974.

The undersigned certify that the subdivision plan shown hereon is correct as complying with the requirements of Final Development Plan Phase 128 A recorded in Plat Book 28 Folios 85 to 86, each inclusive, with all Open Space shown thereon to be used for drainage easements, if necessary, and the requirements of Article 2, Section 3-108 of the annotated code of Maryland concerning the making of this Plat and setting of markers have been complied with. The land shown hereon is a part of the land which by Confirmatory Quit - Claim Deed dated February 7, 1974 and recorded among the Land Records of Howard County, Maryland in Liber 673, Folio 33 was granted and conveyed by Howard Research and Development Corporation to Columbia Industrial Development Corporation.

PROFESSIONAL ENGINEER (By) George Chagetas 29 GREEN ASSOCIATES, INC. Reg. No. TOWSON, MARYLAND 21204  
OWNER (By) Walter F. Woodford COLUMBIA INDUSTRIAL DEVELOPMENT CORP. Auth. Agent COLUMBIA, MARYLAND 21044

RECORDED IN PLAT BOOK 31 FOLIO 10 on July 30, 1975 among The Land Records of Howard County, Maryland.

COLUMBIA INDUSTRIAL CENTER SECTION 1 AREA 2 LOTS 3 AND 4 A RESUBDIVISION OF LOT 1  
SECTION 1  
AREA 2  
Sheet 1 of 1  
6th Election District of Howard County, Md.  
Scale: 1" = 100' Date: Dec. 4, 1974