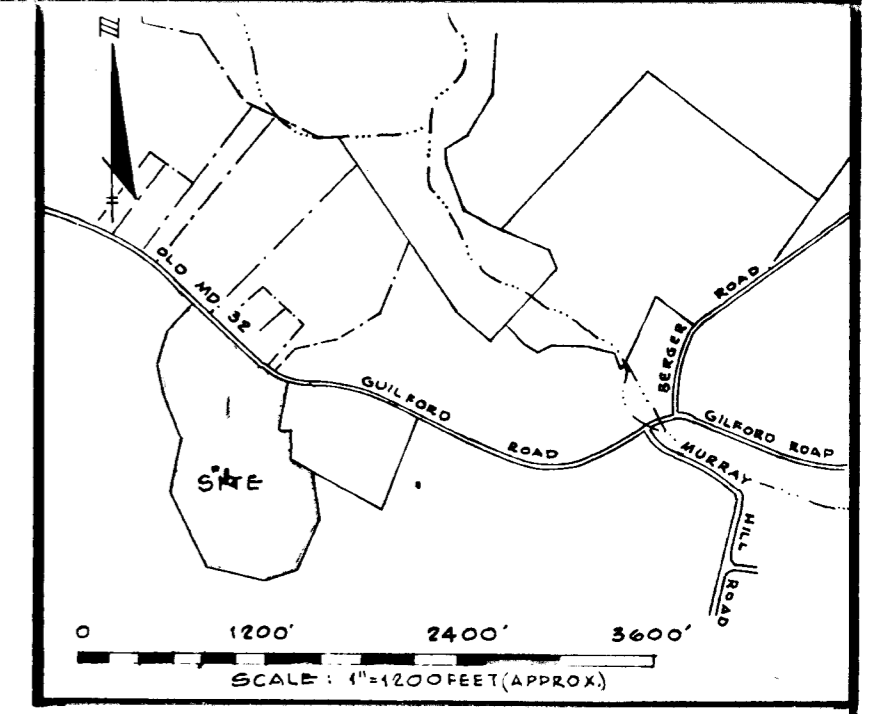


*THIS PROPERTY IS SUBJECT TO THE FOLLOWING EXCEPTIONS:

1. TERMS AND PROVISIONS OF AN AGREEMENT DATED APRIL 26, 1967 AND RECORDED IN LIBER W.H.H. 468, FOLIO 239, BETWEEN THE HOWARD RESEARCH & DEVELOPMENT CORPORATION AND THE BALTIMORE GAS & ELECTRIC COMPANY.
2. RIGHT OF WAY BY DEED DATED JULY 18, 1952 FROM ERNEST W. SMOOT AND FRANCES DUNN SMOOT, HIS WIFE, TO PAXTON A. MCKEEKIN AND CHARLIE T. MCKEEKIN, HIS WIFE, RECORDED AMONG THE LAND RECORDS OF HOWARD COUNTY IN LIBER 234, FOLIO 118. THIS RIGHT OF WAY BEING A PRIVATE ROADWAY 20' WIDE, 10 FEET OF WHICH LIES UPON SUBJECT PROPERTY IN COMMON WITH OTHERS.
3. RIGHT OF WAY AGREEMENT DATED MAY 9, 1942, FROM J. LOUIS SNYDER AND SARAH E. SNYDER, HIS WIFE, TO AMERICAN TELEPHONE AND TELEGRAPH COMPANY OF BALTIMORE CITY RECORDED AMONG THE LAND RECORDS

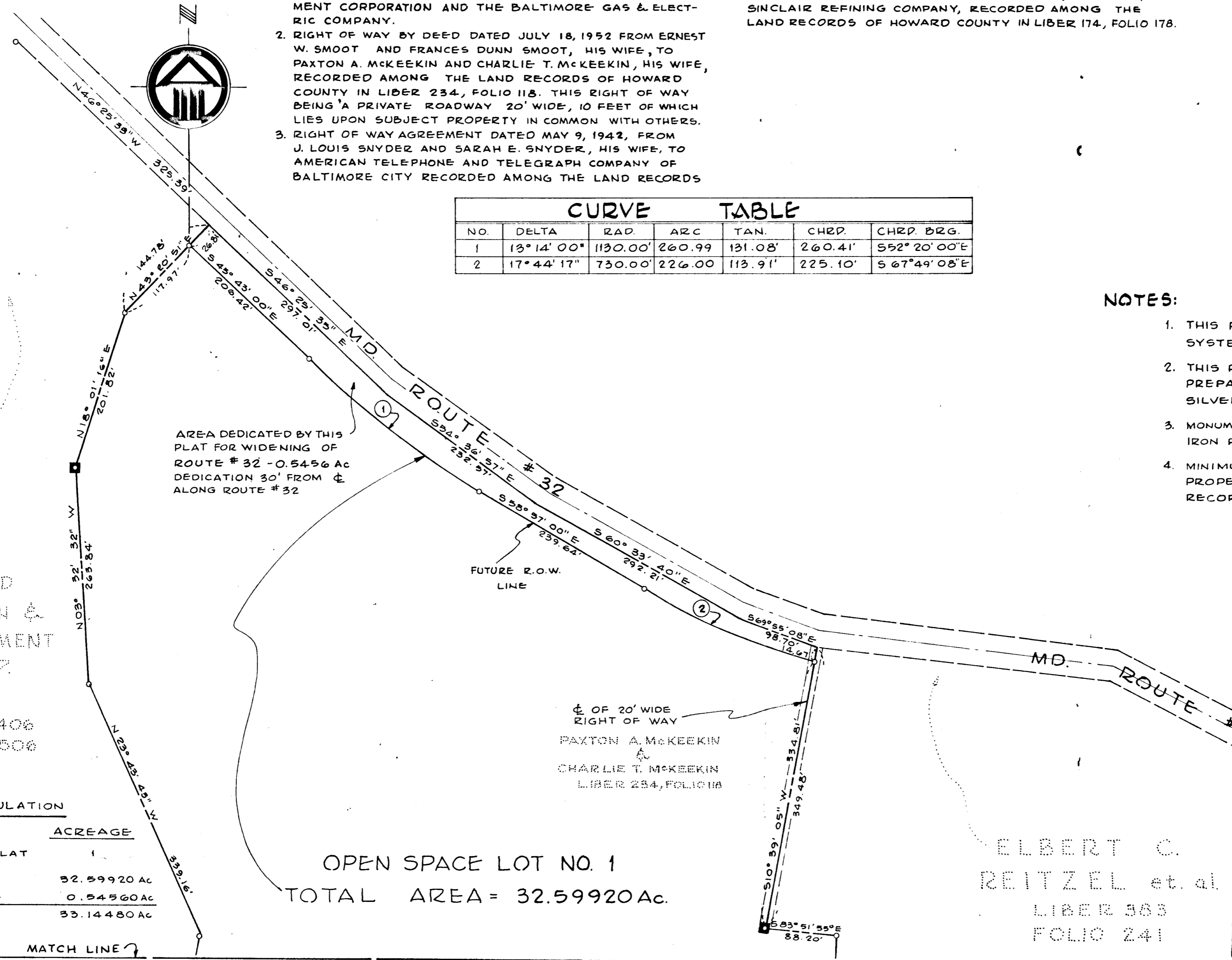
OF HOWARD COUNTY IN LIBER 167, FOLIO 56.
 4. RIGHT OF WAY AGREEMENT DATED MARCH 9, 1942 FROM J. LOUIS SNYDER AND SARAH ELLEN SNYDER, HIS WIFE, TO SINCLAIR REFINING COMPANY, RECORDED AMONG THE LAND RECORDS OF HOWARD COUNTY IN LIBER 174, FOLIO 178.



NO.	DELTA	RAD.	ARC	TAN.	CHRD.	CHRD. BRG.
1	13° 14' 00"	1130.00'	260.99	131.08'	260.41'	S 52° 20' 00" E
2	17° 44' 17"	730.00'	226.00	113.91'	225.10'	S 67° 49' 08" E

NOTES:

1. THIS PLAT IS BASED ON ASSUMED COORDINATE SYSTEM.
2. THIS PLAT IS BASED ON BOUNDARY SURVEY DATA PREPARED BY ASSOCIATED ENGINEERS, INC. SILVER SPRING, MD.
3. MONUMENTS INDICATED THUS \blacksquare IRON PIPES INDICATED THUS \circ
4. MINIMUM BUILDING SETBACK RESTRICTIONS FROM PROPERTY LINES TO BE IN ACCORDANCE WITH RECORDED FINAL DEVELOPMENT PLAN CRITERIA.



AREA DEDICATED BY THIS PLAT FOR WIDENING OF ROUTE # 32 - 0.5456 AC DEDICATION 30' FROM CL ALONG ROUTE # 32

FUTURE R.O.W. LINE

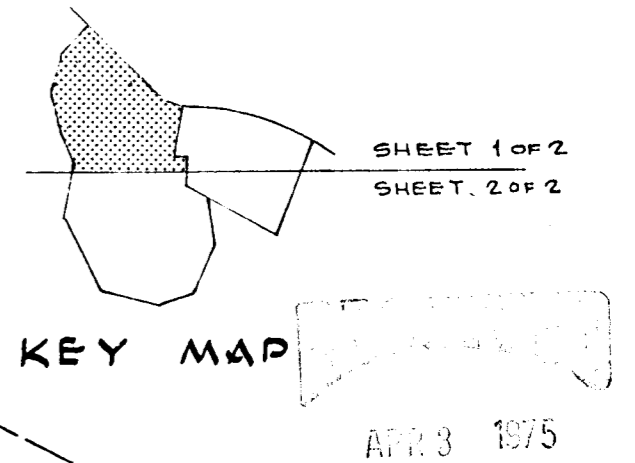
CL OF 20' WIDE RIGHT OF WAY
 PAXTON A. MCKEEKIN
 CHARLIE T. MCKEEKIN
 LIBER 234, FOLIO 118

OPEN SPACE LOT NO. 1
 TOTAL AREA = 32.59920 Ac.

HOWARD RESEARCH & DEVELOPMENT CORP.

LIBER 406
 FOLIO 506

TOTALS	ACREAGE
LOTS THIS PLAT	1
OPEN SPACE	32.59920 AC
R.O.W.	0.54560 AC
TOTAL	33.14480 AC



RECEIVED
 APR 4 1975
 BUREAU OF ENGINEERING INSPECTION SECTION

ELBERT C. REITZEL et al.
 LIBER 383
 FOLIO 241

APPROVED: FOR PUBLIC WATER AND PUBLIC SEWERAGE SYSTEMS. HOWARD COUNTY HEALTH DEPARTMENT.

COUNTY HEALTH OFFICER _____ DATE _____

APPROVED: HOWARD COUNTY OFFICE OF PLANNING AND ZONING.

DIRECTOR _____ DATE 2-27-75

APPROVED: FOR PUBLIC WATER AND PUBLIC SEWERAGE, STORM DRAINAGE SYSTEMS AND PUBLIC ROADS. HOWARD COUNTY DEPARTMENT OF PUBLIC WORKS.

DIRECTOR _____ DATE 2-20-75

SURVEYOR'S CERTIFICATE

I HEREBY CERTIFY THAT THE FINAL PLAT SHOWN HEREON IS CORRECT; THAT IT IS A SUBDIVISION OF PART OF THE LANDS CONVEYED BY HOWARD RESEARCH & DEVELOPMENT CORPORATION TO THE HOWARD COUNTY BOARD OF EDUCATION BY DEED DATED MARCH 4, 1974 AND RECORDED IN THE LAND RECORDS OF HOWARD COUNTY, IN LIBER 672, OF FOLIO 123 AND THAT ALL IRON PIPES AND MONUMENTS ARE IN PLACES SHOWN IN ACCORDANCE WITH THE ANNOTATED CODE OF MARYLAND, AS AMENDED.

PROFESSIONAL LAND SURVEYOR
 (BY) Eva Perendez 1974 REG. NO. 0330
 ASSOCIATED ENGINEERS, INC.
 8555 SIXTEENTH STREET SILVER SPRING, MD. 20910

OWNER'S CERTIFICATE

WE, THE HOWARD COUNTY BOARD OF EDUCATION, OWNERS OF THE PROPERTY SHOWN AND DESCRIBED HEREON, HEREBY ADOPT THIS PLAN OF SUBDIVISION; AND IN CONSIDERATION OF THE APPROVAL OF THIS PLAT BY THE OFFICE OF PLANNING AND ZONING ESTABLISH THE MINIMUM BUILDING RESTRICTION LINES AND DEDICATE 0.54560 AC TO PUBLIC USE. ALL EASEMENTS OR RIGHT-OF-WAYS AFFECTING THE PROPERTY ARE INCLUDED IN THIS PLAN OF SUBDIVISION.

(BY) Elbert C. Reitzel AUTH. AGENT
 BOARD OF EDUCATION, HOWARD COUNTY
 COLUMBIA, MD. 21029

RECORDED IN PLAT BOOK 31 FOLIO 12
 ON MARCH 5 1975, AMONG THE LAND RECORDS OF HOWARD COUNTY, MARYLAND

COLUMBIA VILLAGE OF KINGS CONTRIVANCE
 OPEN SPACE LOT NO. 1

SECTION 2
 AREA 1
 SHEET 1 OF 2
 6TH ELECTION DISTRICT OF HOWARD CTY. MD.
 SCALE: 1" = 100' DATE: NOVEMBER 11, 1974

#405

I-7000

MATCH LINE

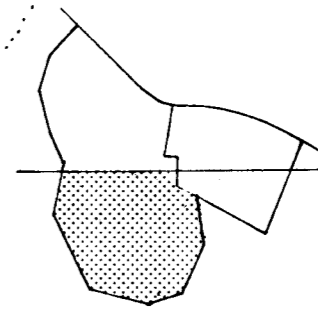
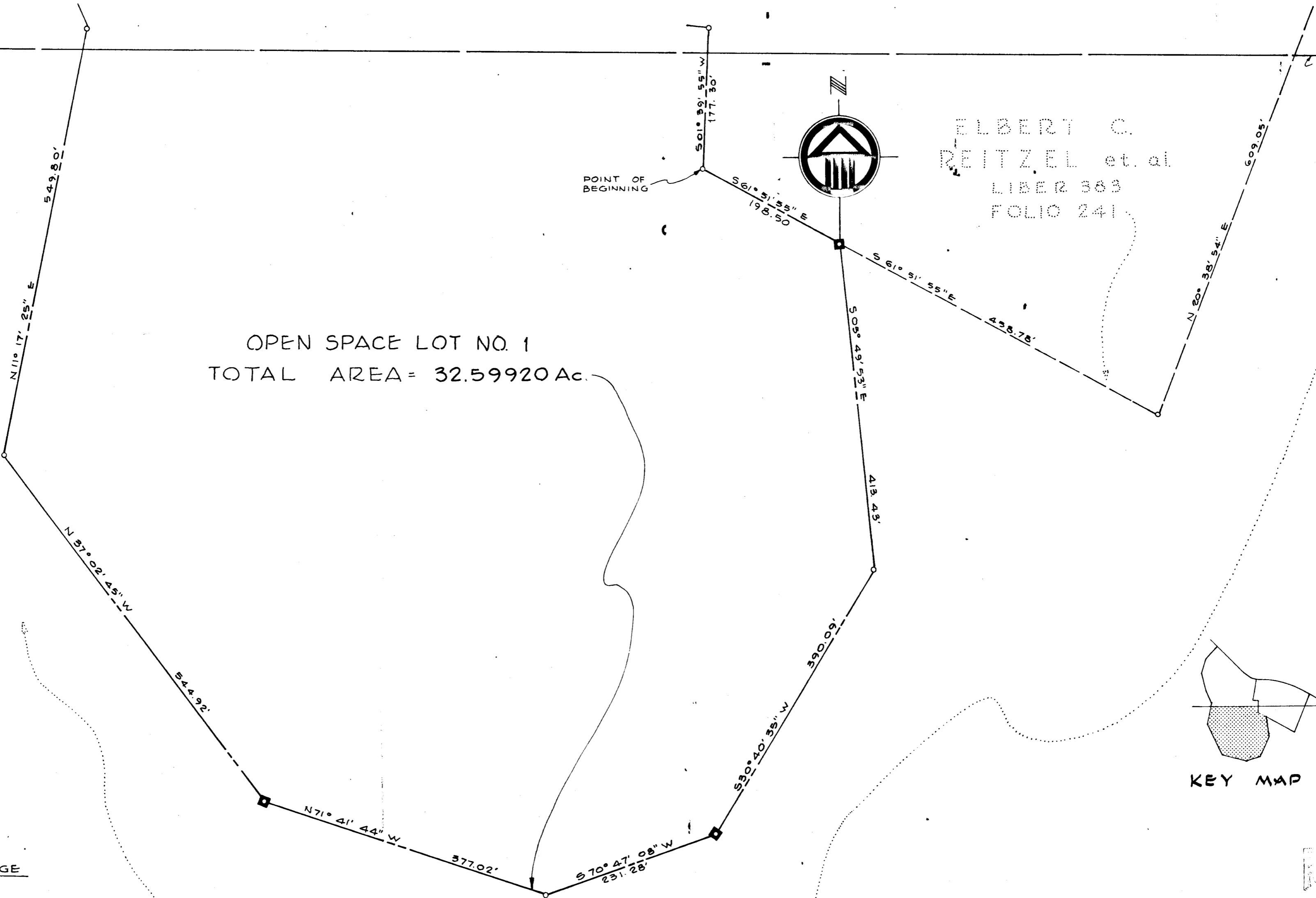
MATCH LINE

HOWARD RESEARCH & DEVELOPMENT CORP.

LIBER 406 FOLIO 506

ELBERT C. REITZEL et. al
LIBER 563 FOLIO 241

OPEN SPACE LOT NO. 1
TOTAL AREA = 32.59920 Ac.



SHEET 1 OF 2
SHEET 2 OF 2

KEY MAP



APR 3 1975

RECORDS DEPARTMENT

HOWARD RESEARCH & DEVELOPMENT CORP.
LIBER 406/506

TABULATION

TOTALS	ACREAGE
LOTS THIS PLAT	1
OPEN SPACE	32.59920 Ac
R.O.W.	0.54560 Ac
TOTAL	33.14480 Ac

APPROVED: FOR PUBLIC WATER AND PUBLIC SEWERAGE SYSTEMS. HOWARD COUNTY HEALTH DEPARTMENT.

COUNTY HEALTH OFFICER _____ DATE _____

APPROVED: HOWARD COUNTY OFFICE OF PLANNING AND ZONING.

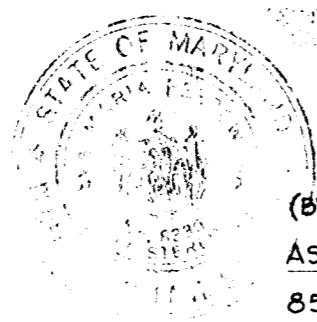
Thomas S. Starnigh 2-27-75
DIRECTOR DATE

APPROVED: FOR PUBLIC WATER AND PUBLIC SEWERAGE, STORM DRAINAGE SYSTEMS AND PUBLIC ROADS. HOWARD COUNTY DEPARTMENT OF PUBLIC WORKS.

[Signature] 2-20-75
DIRECTOR DATE

SURVEYOR'S CERTIFICATE

I HEREBY CERTIFY THAT THE FINAL PLAT SHOWN HEREON IS CORRECT; THAT IT IS A SUBDIVISION OF PART OF THE LANDS CONVEYED BY HOWARD RESEARCH & DEVELOPMENT CORPORATION TO THE HOWARD COUNTY BOARD OF EDUCATION BY DEED DATED MARCH 4, 1974 AND RECORDED IN THE LAND RECORDS OF HOWARD COUNTY, IN LIBER 672, OF FOLIO 123 AND THAT ALL IRON PIPES AND MONUMENTS ARE IN PLACES SHOWN IN ACCORDANCE WITH THE ANNOTATED CODE OF MARYLAND, AS AMENDED.



PROFESSIONAL LAND SURVEYOR
(BY) *Eric Perucha* 1974 REG. NO. 0330
ASSOCIATED ENGINEERS, INC.
8555 SIXTEENTH STREET SILVER SPRING, MD. 20910

OWNER'S CERTIFICATE

WE, THE HOWARD COUNTY BOARD OF EDUCATION, OWNERS OF THE PROPERTY SHOWN AND DESCRIBED HEREON, HEREBY ADOPT THIS PLAN OF SUBDIVISION; AND IN CONSIDERATION OF THE APPROVAL OF THIS PLAT BY THE OFFICE OF PLANNING AND ZONING ESTABLISH THE MINIMUM BUILDING RESTRICTION LINES AND DEDICATE 0.54560 AC. TO PUBLIC USE. ALL EASEMENTS OR RIGHT-OF-WAYS AFFECTING THE PROPERTY ARE INCLUDED IN THIS PLAN OF SUBDIVISION.

(BY) *Donald J. Roquemore*
BOARD OF EDUCATION, HOWARD COUNTY AUTH. AGENT
COLUMBIA, MD. 21029

RECORDED IN PLAT BOOK 51 FOLIO 66
ON MARCH 5 1975, AMONG THE
LAND RECORDS OF HOWARD COUNTY, MARYLAND

COLUMBIA
VILLAGE OF KINGS CONTRIVANCE
OPEN SPACE LOT NO. 1

SECTION 2
AREA 1
SHEET 2 OF 2
6TH ELECTION DISTRICT OF HOWARD CTY. MD.
SCALE: 1" = 100' DATE: NOVEMBER 11, 1974

415

E-75-46