

VICINITY MAP
Scale: 1" = 2000'

COORDINATES		
NO.	NORTH	EAST
446	494,578.90	845,459.04
452	494,373.88	845,682.58
501	494,173.85	845,442.78
502	494,125.19	845,495.84
503	494,003.84	845,384.54
504	494,052.50	845,331.48
505	494,062.71	845,326.07
506	494,115.77	845,374.73
507	494,185.50	845,298.71
508	494,132.44	845,250.04
509	494,142.58	845,238.99
510	494,195.64	845,287.66
511	494,265.37	845,211.63
512	494,212.31	845,162.96
513	494,206.33	845,142.70
514	494,327.68	845,254.00
515	494,376.34	845,200.94
516	494,255.00	845,089.64
541	494,602.50	845,408.36
542	494,526.48	845,338.63
543	494,477.81	845,391.70
544	494,553.84	845,461.42
545	494,631.96	845,507.71
546	494,520.66	845,679.06
547	494,467.60	845,580.39
548	494,460.84	845,587.76
549	494,513.90	845,636.42
550	494,426.94	845,731.24

TABULATIONS		
TOTALS	THIS SHEET ACREAGE	SHEETS 1&2 ACREAGE
All Lots	= 1.541	= 3.006
Total	= 1.541	= 3.006
Total Lots	= 45	= 88

LEGEND

- B-75 Lot Number
- ⊙ Coordinate Number
- ▨ Easement for Water and/or Sewer House Connection Extensions

NOTES:

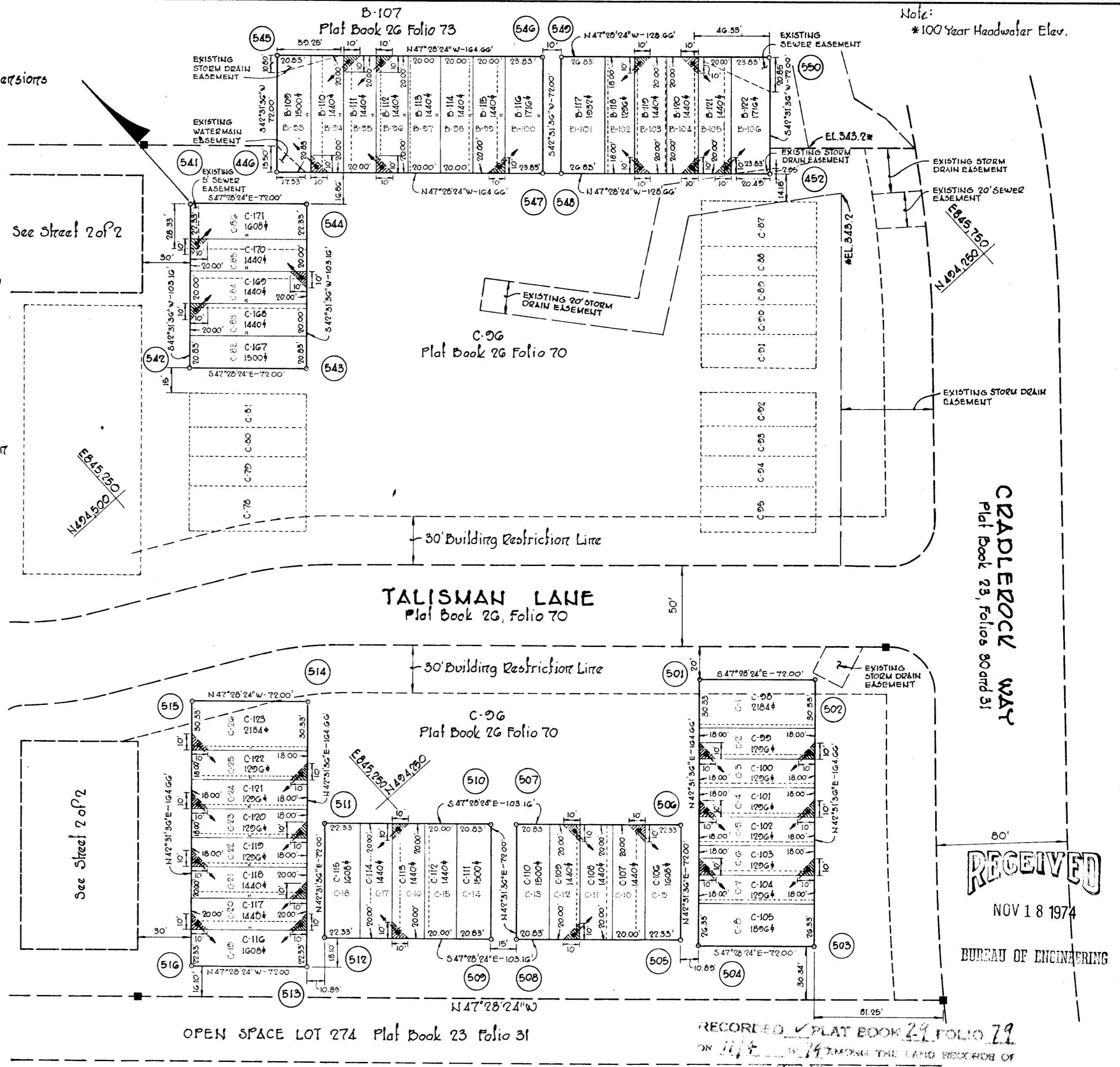
- This plat is intended to supercede portions of those plats recorded among the Land Records of Howard County on March 20, 1974 in Plat Book 26, Folios 70 and 73.
- All coordinates are based on the Maryland State Grid System.
- 4" x 4" x 3/8" Concrete monuments shown thus: ■
- The subdivision plat shown hereon is correct as complying with the requirements of Final Development Plat Phase 113 recorded in Plat Book 110 to 121 and Final Development Plat Phase 127 recorded in Plat Book 20 Folios 130 to 136.

LEGEND FOR WATER AND SEWER HOUSE CONNECTION EASEMENTS

All lots shown hereon contain either (a) no cross-tatched easement area, (b) cross-tatched easement area of only the front or rear thereof, or (c) cross-tatched easement area of both the front and rear thereof. Also, all lots containing a cross-tatched easement area hereon are either burdened, benefited or both, and further contain either the head, a portion of the shaft and/or the base of an arrow. In every instance, the servient lot for the hereinafter described easement rights contains the base of the arrow and the dominant lot for said purposes contains the head of the arrow.

Howard Homes Development Corp. signs this Legend to grant unto its successors and assigns as future property owners of improved lots as shown hereon, their personal representatives and assigns, the right to repair and maintain as required from time to time sewer and water pipes and lines within, on or under each of said lots in those areas as indicated in general hereon but as more definitively shown and located on the Utility Plans for this Plat as prepared by Whitman, Reardon and Associates, Registered Professional Engineers and approved by and filed with Howard County Department of Public Works.

By Howard Homes Development Corp.



APPROVED: FOR PUBLIC WATER AND PUBLIC SEWERAGE SYSTEMS, HOWARD COUNTY HEALTH DEPARTMENT.

COUNTY HEALTH OFFICER _____ DATE _____

APPROVED: HOWARD COUNTY OFFICE OF PLANNING AND ZONING.

Director _____ DATE 11-1-74

APPROVED: FOR PUBLIC WATER AND PUBLIC SEWERAGE, STORM DRAINAGE SYSTEMS AND PUBLIC ROADS, HOWARD COUNTY DEPARTMENT OF PUBLIC WORKS.

Director _____ DATE 10/29/74

OWNER'S CERTIFICATE

We, Howard Homes Development Corp. a Maryland Corporation by Lee D. Rosenberg, President, Seymour F. Raphael, Vice President, owners of the property shown and described hereon, hereby adopt this plat of subdivision, and in consideration of the approval of this Final Plat by the office of Planning and Zoning, establish the minimum building restriction lines, and dedicate the streets, alleys, walkways, and other easements, widening strips and floodplains, and open space where applicable, to public use. All easements, or rights of way affecting the property are included in this plat of subdivision.

Witness our hand this 24 day of September 1974.

By: _____ (President)
Attest: _____ (Vice President)

SURVEYOR'S CERTIFICATE

I hereby certify that the Final Plat shown hereon is correct; that it is a subdivision of a part of the lands conveyed by Howard Homes, Inc. to Howard Homes Development Corp. by deed dated April 17, 1974 and recorded in the Land Records of Howard County in Liber 677 of Folio 339, and that all monuments are in place as shown, in accordance with the Annotated Code of Maryland, as amended.

Date _____
Registered Land Surveyor, No. 1974
Whitman, Reardon and Associates
Engineers
Baltimore, Maryland 21202

COLUMBIA VILLAGE OF OWEN BROWN

LOTS C-98 THRU C-171
A RESUBDIVISION OF LOTS C-1 THRU C-99 AND C-82 THRU C-86 SECTION 1 AREA 1

LOTS B-109 THRU B-122
A RESUBDIVISION OF LOTS B-23 THRU B-106 SECTION 1 AREA 2

Street 1 of 2
Off Election District of Howard County, Md.
Scale: 1" = 50' Date: 10-21-74

#61

COORDINATES		
NO.	NORTH	EAST
517	494,284.42	845,075.92
518	494,379.24	845,162.89
519	494,427.91	845,109.82
520	494,333.09	845,022.86
521	494,331.36	845,007.71
522	494,386.64	845,058.40
523	494,510.10	844,923.79
524	494,454.83	844,873.10
525	494,532.57	844,914.09
526	494,483.91	844,967.15
527	494,591.99	845,066.28
528	494,640.66	845,013.22
529	494,646.03	845,019.28
530	494,599.36	845,073.04
531	494,707.44	845,172.17
532	494,756.11	845,119.11
533	494,779.01	845,131.54
534	494,832.07	845,180.20
535	494,739.36	845,281.28
536	494,686.30	845,232.62
537	494,673.46	845,246.62
538	494,726.52	845,295.29
539	494,633.81	845,396.37
540	494,580.75	845,347.70

LEGEND FOR WATER AND SEWER HOUSE CONNECTION EASEMENTS

All lots shown hereon contain either (a) no cross-traced easement area, (b) cross-traced easement area at only the front or rear thereof, or (c) cross-traced easement area at both the front and rear thereof. Also, all lots containing a cross-traced easement area hereon are either burdened, benefited or both, and further contain either the head, a portion of the shaft and/or the base of an arrow. In every instance, the servient lot for the hereinafter described easement rights contains the base of the arrow and the dominant lot for said purposes contains the head of the arrow.

Howard Homes Development Corp. signs this Legend to grant unto its successors and assigns, as future property owners of improved lots as shown hereon, their personal representatives and assigns, the right to repair and maintain as required from time to time sewer and water pipes and lines within, on or under each of said lots in those areas as indicated in general hereon but as more definitively shown and located on the Utility Plans for this Plat as prepared by Whitman, Reardon and Associates, Registered Professional Engineers and approved by and filed with Howard County Department of Public Works.

By Howard Homes Development Corp.

LEGEND

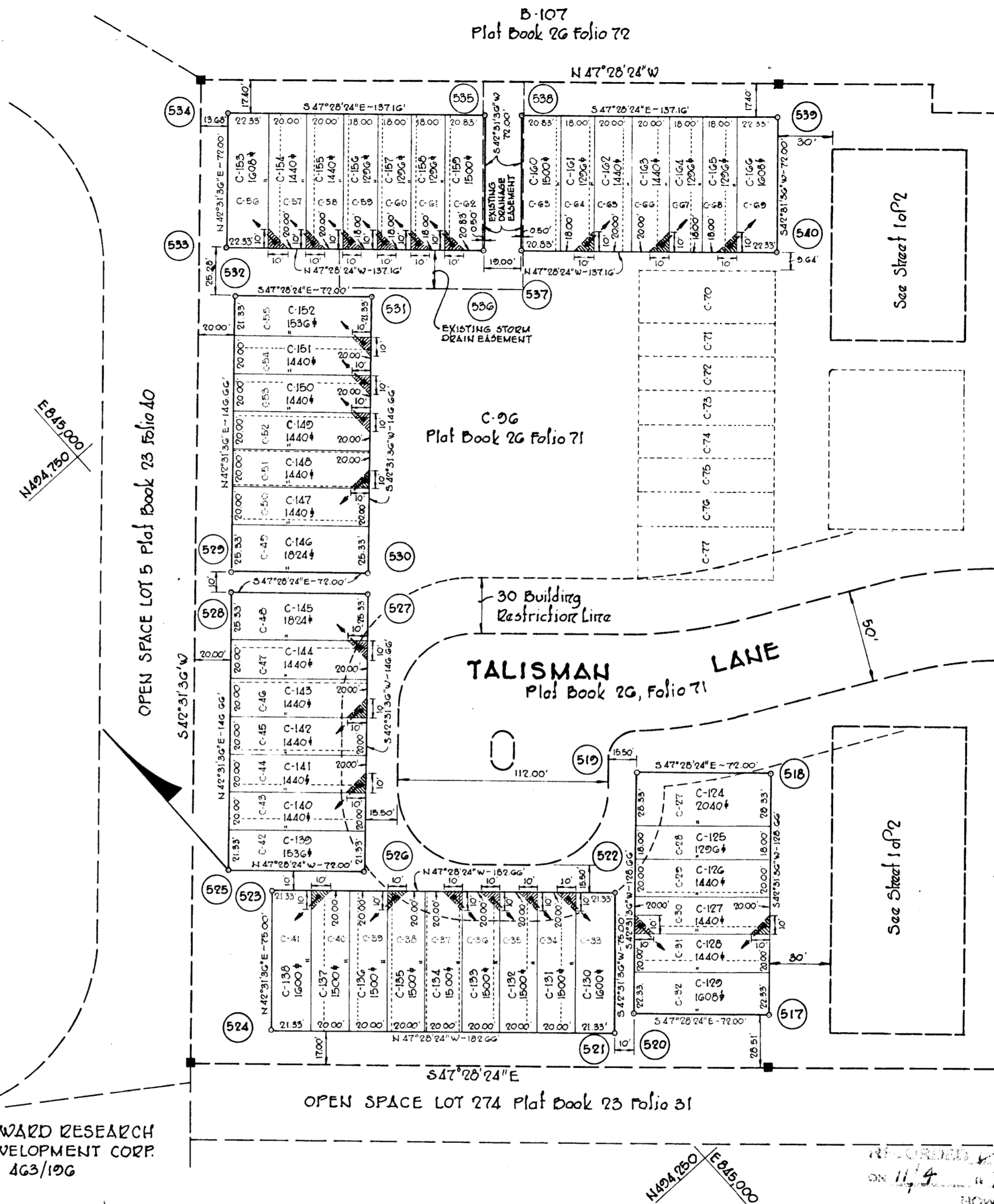
- B-75 Lot Number
- (10) Coordinate Number
- ▨ Easement for Water and/or Sewer House Connection Extensions.

NOTES:

1. This plat is intended to supersede a portion of that plat recorded among the Land Records of Howard County on March 20, 1974 in Plat Book 26 Folio 71.
2. All coordinates are based on the Maryland State Grid System.
3. 4" x 4" x 3/8" Concrete monuments shown thus: ■
4. The subdivision plat shown hereon is correct as complying with the requirements of Final Development Plat Phase 113 recorded in Plat Book 20 Folios 110 to 121 and Final Development Plat Phase 127 recorded in Plat Book 20 Folios 130 to 136.

TABULATIONS

TOTALS	ACREAGE
All Lots	= 1.465
Total	= 1.465
Lots This Plat	= .43



THE HOWARD RESEARCH AND DEVELOPMENT CORP. 463/196

RECEIVED
NOV 18 1974
BUREAU OF ENGINEERING

RECORDED IN PLAT BOOK 27 FOLIO 80 ON 11/9/74 AMONG THE LAND RECORDS OF HOWARD COUNTY, MD.

APPROVED: FOR PUBLIC WATER AND PUBLIC SEWERAGE SYSTEMS, HOWARD COUNTY HEALTH DEPARTMENT.

COUNTY HEALTH OFFICER _____ DATE _____

APPROVED: HOWARD COUNTY OFFICE OF PLANNING AND ZONING.

DIRECTOR _____ DATE 11-1-74

APPROVED: FOR PUBLIC WATER AND PUBLIC SEWERAGE, STORM DRAINAGE SYSTEMS AND PUBLIC ROADS. HOWARD COUNTY DEPARTMENT OF PUBLIC WORKS.

DIRECTOR _____ DATE _____

OWNER'S CERTIFICATE

We, Howard Homes Development Corp. a Maryland Corporation by Lee B. Rosenberg, President, Seymour F. Raphael, Vice President, owners of the property shown and described hereon, hereby adopt this plat of subdivision, and in consideration of the approval of this Final Plat by the office of Planning and Zoning, establish the minimum building restriction lines, and dedicate the streets, alleys, walkways, and other easements, widening strips and floodplains, and open space where applicable, to public use. All easements, or rights-of-way affecting the property are included in this plat of subdivision.

Witness our hand this 24 day of September 1974.

By _____ (President)

Attest: _____ (Vice President)

SURVEYOR'S CERTIFICATE

I hereby certify that the Final Plat shown hereon is correct, that it is a subdivision of a part of the lands conveyed by Howard Homes, Inc. to Howard Homes Development Corp. by deed dated April 17, 1974 and recorded in the Land Records of Howard County in Liber 677 of Folio 339, and that all monuments are in place as shown, in accordance with the Annotated Code of Maryland, as amended.

Date 9-29-74

Registered Land Surveyor, No. 1974
Whitman, Reardon and Associates
Engineers
Baltimore, Maryland 21202

COLUMBIA VILLAGE OF OWEN BROWN

LOTS C-98 THRU C-171
A RESUBDIVISION OF LOTS C-1 THRU C-69 AND C-82 THRU C-86 SECTION I AREA 1

LOTS B-109 THRU B-122
A RESUBDIVISION OF LOTS B-93 THRU B-106 SECTION I AREA 2

Street 2 of 2
City Election District of Howard County, Md.
Scale: 1" = 50' Date: 10-21-74