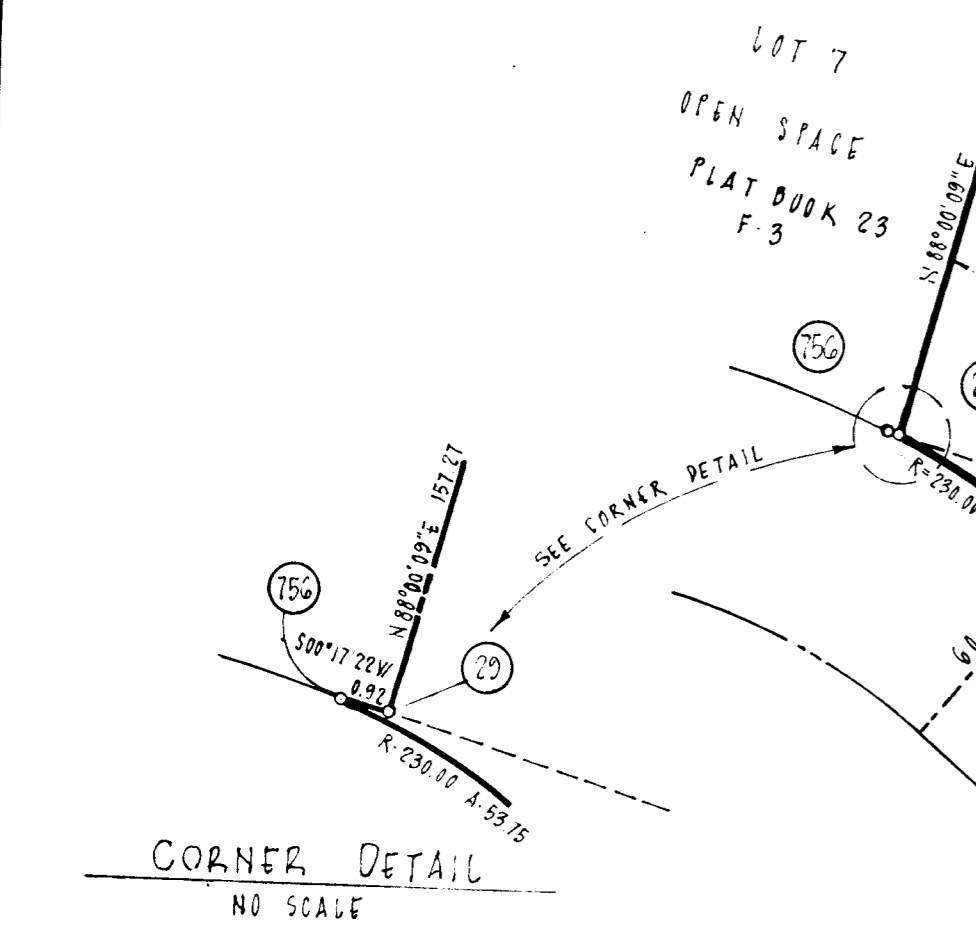


COLUMBIA

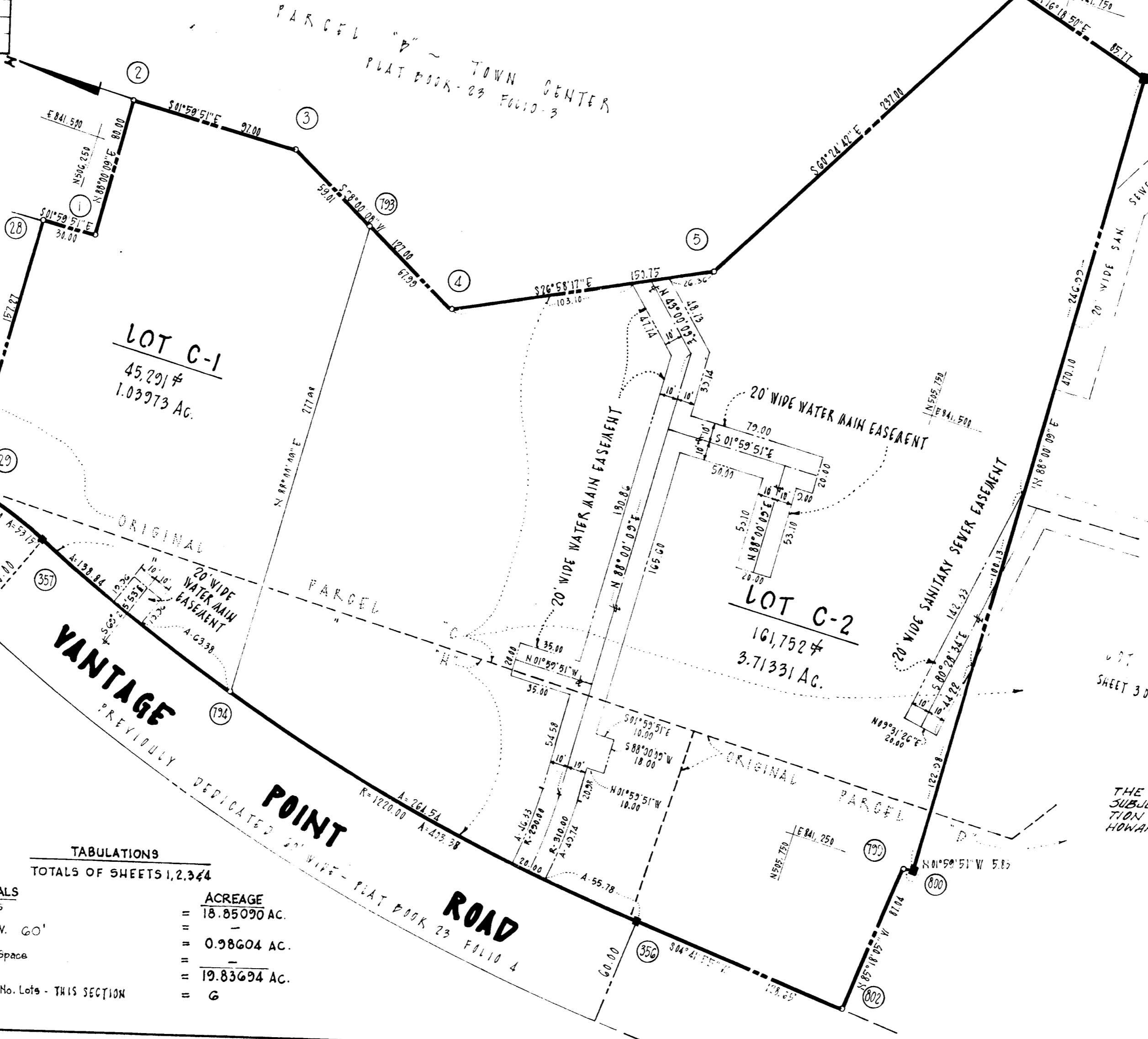
ALL COORDINATES ARE BASED ON THE MARYLAND STATE GRID SYSTEM

COORDINATES					
NO.	NORTH	EAST	NO.	NORTH	EAST
1	506,234.88	841,446.98	802	505,691.47	841,162.69
2	506,237.66	841,526.33	356	505,819.69	841,174.23
3	506,140.72	841,529.71	794	506,078.93	841,224.20
4	506,028.59	841,470.48	357	506,209.01	841,272.53
5	505,894.24	841,538.46	29	506,258.58	841,288.16
6	505,777.21	841,744.55	756	506,260.30	841,288.16
796	505,694.91	841,720.46	28	506,264.86	841,445.33
799	505,684.34	841,250.44			
800	505,678.51	841,250.64			

CURVE DATA						
NO.	RADIUS	Δ	ARC	TAN. CHORD	LCB	
357-29	230.00	13°23'18"	59.74	27.90	55.62	N 16°56'58" E
794-357	1220.00	6°31'15"	131.84	69.49	138.76	N 20°22'56" E
356-794	1220.00	12°25'25"	264.54	132.79	264.92	N 10°54'31" E



TABULATIONS	
TOTALS All lots	ACREAGE = 4.75304 AC.
R.O.W.	= -
Open Space	= -
Total	= 4.75304 AC.
Lots this plat (incl. open space)	= 2



TABULATIONS	
TOTALS All lots	ACREAGE = 18.85090 AC.
R.O.W. 60'	= -
Open Space	= 0.98604 AC.
Total	= 19.83694 AC.
Total No. Lots - THIS SECTION	= 6

HOWARD RESEARCH AND DEVELOPMENT CORPORATION
LIBER 403 FOLIO 196

RECEIVED
AUG 22 1974
BUREAU OF ENGINEERING
RECEIVED
AUG 19 1974
BUREAU OF ENGINEERING

THE PURPOSE OF THIS PLAT IS THE RESUBDIVISION OF PARCELS "C", "D", "E", "H", "A" AS ORIGINALLY SHOWN AND RECORDED IN PLAT BOOK 23 AT FOLIOS 3 & 5

APPROVED: FOR PUBLIC WATER AND PUBLIC SEWERAGE SYSTEMS, HOWARD COUNTY HEALTH DEPARTMENT.
COUNTY HEALTH OFFICER _____ DATE _____
APPROVED: HOWARD COUNTY OFFICE OF PLANNING AND ZONING.
DIRECTOR _____ DATE _____
APPROVED: FOR PUBLIC WATER AND PUBLIC SEWERAGE, STORM DRAINAGE SYSTEMS AND PUBLIC ROADS. HOWARD COUNTY DEPARTMENT OF PUBLIC WORKS.
DIRECTOR _____ DATE _____

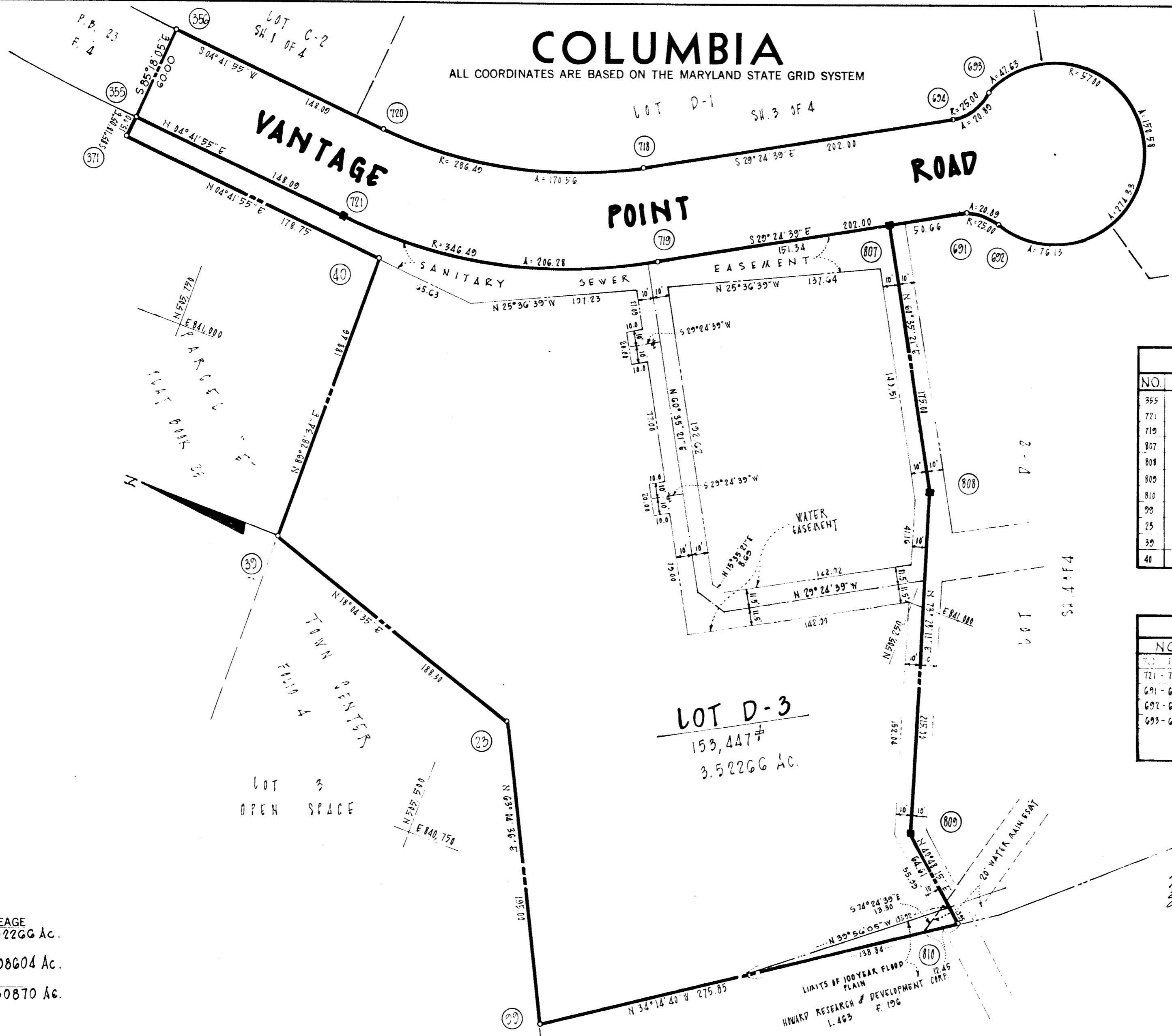
SURVEYOR'S, ENGINEER'S and OWNER'S CERTIFICATES
The undersigned, owner of the property shown on this Plat, grants unto, (1) Howard County, Maryland, its successors and assigns, the right to lay, construct and maintain water and sewer mains and laterals thereon in and under all road and street rights-of-way as shown hereon; (2) further it adopts this plan of subdivision and reserves the fee simple title to the beds of the streets and/or roads hereon, except however, for one dollar consideration, it herewith grants the right and option to Howard County, Maryland to acquire (within a period of five years commencing with the date of recording of this plat among the Land Records of Howard County) the fee simple title to the beds of the streets and/or roads shown hereon.
The undersigned certify that the subdivision plan shown hereon is correct as complying with the requirements of Article 21, Section 3-108 of the annotated code of Maryland concerning the making of this Plat and setting of markers have been complied with. The land shown hereon is a part of the land which by deed dated 1-2-73, 5-28-71 and 11-9-72 and recorded among the Land Records of Howard County, Maryland in Liber 20 Folio 322 was granted and conveyed by the Howard Research and Development Corporation to Columbia Oaks Corporation.
PROFESSIONAL LAND SURVEYOR (By) James M. Jones #4214 Reg. No. _____
Macris - Fowler Associates 27 W. Jefferson St., Rockville, Md.
PROFESSIONAL ENGINEER (By) John A. Macris #4849 Reg. No. _____
Macris - Fowler Associates 817 Silver Spring Ave., Silver Spring, Md.
OWNER (By) George L. Nolan Auth. Agent
COLUMBIA OAKS CORPORATION 1211 CONNECTICUT AVE. N.W., WASH. D.C. 20036

RECORDED IN PLAT BOOK 29 FOLIO 47
on Aug 13, 1974 among The Land Records of Howard County, Maryland.

COLUMBIA TOWN CENTER
LOTS C-1, C-2, C-3, D-1, D-2 & D-3
A RESUBDIVISION OF PARCELS C, D, E
SECTION 7
AREA 7
Sheet 1 of 4
5th Election District of Howard County, Md.
Scale: 1" = 50'
Date: November 20, 1973

COLUMBIA

ALL COORDINATES ARE BASED ON THE MARYLAND STATE GRID SYSTEM



RECEIVED

AUG 19 1974

BUREAU OF ENGINEERING

COORDINATES

NO.	NORTH	EAST	NO.	NORTH	EAST
355	505,824.60	841,114.43	371	505,825.83	841,099.48
721	505,677.00	841,102.30	356	505,819.60	841,174.23
719	505,478.47	841,145.79	720	505,672.09	841,162.10
807	505,346.64	841,220.10	718	505,507.93	841,198.06
808	505,260.70	841,067.66	694	505,331.07	841,297.25
809	505,199.53	840,861.54	693	505,319.86	841,313.53
810	505,150.62	840,819.32	692	505,282.31	841,246.92
399	505,378.65	840,664.10	691	505,302.51	841,244.98
25	505,646.95	840,837.06			
39	505,645.96	840,896.39			
40	505,647.68	841,084.84			

CURVE DATA

NO.	RADIUS	Δ	ARC	TAN.	CHORD	L.C.B.
719 - 718	286.40	34° 06' 34"	170.56	87.89	168.05	S 72° 41' 22" E
721 - 719	346.40	34° 06' 34"	206.28	106.30	209.24	N 12° 21' 22" W
691 - 692	25.00	47° 52' 35"	20.89	11.10	20.29	N 05° 20' 21" W
692 - 693	25.00	275° 45' 10"	274.33	-	76.46	S 60° 35' 21" Y
693 - 694	25.00	47° 52' 35"	20.89	11.10	20.29	S 53° 20' 56" E

NOTE:
4" x 4" x 36" CONCRETE MONUMENT SHOWN THUS ■

TABULATIONS

TOTALS	ACREAGE
All lots	= 3.52266 Ac.
R. O. W. Arterial	=
Local	= 0.98604 Ac.
Open Space	=
Total	= 4.50870 Ac.
Lots this plat (incl. open space)	= 1

THE LOTS OR PARCELS SHOWN ON THIS PLAN (FLAT) ARE SUBJECT TO THE SUPPLEMENTAL SEWER IN-AID-OF-CONSTRUCTION CHARGE CREATED BY SECTION 20.311A OF THE HOWARD COUNTY CODE AND TO EXECUTIVE ORDER NO. 72-9.

THE PURPOSE OF THIS PLAT IS THE RESUBDIVISION OF PARCELS "C", "D" & "H" AS ORIGINALLY SHOWN AND RECORDED IN PLAT BOOK 23 AT FOLIOS 3 & 5

APPROVED: FOR PUBLIC WATER AND PUBLIC SEWERAGE SYSTEMS, HOWARD COUNTY HEALTH DEPARTMENT.

COUNTY HEALTH OFFICER _____ DATE 8-13-74

APPROVED: HOWARD COUNTY OFFICE OF PLANNING AND ZONING.

DIRECTOR _____ DATE 8-13-74

APPROVED: FOR PUBLIC WATER AND PUBLIC SEWERAGE, STORM DRAINAGE SYSTEMS AND PUBLIC ROADS, HOWARD COUNTY DEPARTMENT OF PUBLIC WORKS.

DIRECTOR _____ DATE

SURVEYOR'S, ENGINEER'S and OWNER'S CERTIFICATES

The undersigned, owner of the property shown on this Plat, grants unto, (1) Howard County, Maryland, its successors and assigns, the right to lay, construct and maintain water and sewer mains and laterals therefor in and under all road and street rights-of-way as shown hereon; (2) further it adopts this plan of subdivision and reserves the fee simple title to the beds of the streets and/or roads hereon, except however, for one dollar consideration, it herewith grants the right and option to Howard County, Maryland to acquire (within a period of five years commencing with the date of recording of this plat among the Land Records of Howard County) the fee simple title to the beds of the streets and/or roads shown hereon.

The undersigned certify that the subdivision plan shown hereon is correct as complying with the requirements of Final Development Plan Phase 107-A recorded in Plat Book 20 Folios 63 to 66, each inclusive, with all Open Space shown thereon to be used for drainage easements, if necessary, and the requirements of Article 21, Section 3-108 of the annotated code of Maryland concerning the making of this Plat and setting of markers have been complied with. The land shown hereon is a part of the land which by deed dated January 2, 1973 and recorded among the Land Records of Howard County, Maryland in Liber 620 Folio 329 was granted and conveyed by The Howard Research and Development Corporation to Columbia Oaks Corporation.

PROFESSIONAL LAND SURVEYOR (By) James M. Fowler #4214 Reg. No. _____
 Macris + Fowler Associates 27 W. Jefferson St. Rockville, Md.

PROFESSIONAL ENGINEER (By) John A. Meier #2849 Reg. No. _____
 Macris + Fowler Associates 817 Silver Spring Ave. Silver Spring, Md.

OWNER (By) George T. Nolan _____
 Columbia Oaks Corporation 1211 Connecticut Ave. N.W. Wash. D.C. 20036
 Auth. Agent

RECORDED IN PLAT BOOK 29 FOLIO 49
 on Aug 13, 1974 among The
 Land Records of Howard County, Maryland.

COLUMBIA
 TOWN CENTER
 LOTS C-1, C-2, C-3, D-1, D-2 & D-3
 A RESUBDIVISION OF PARCELS C, D & H

SECTION 7
 AREA 7
 Sheet 2 of 4
 5th Election District of Howard County, Md.
 Scale: 1" = 50' Date: November 20, 1973

COLUMBIA

ALL COORDINATES ARE BASED ON THE MARYLAND STATE GRID SYSTEM

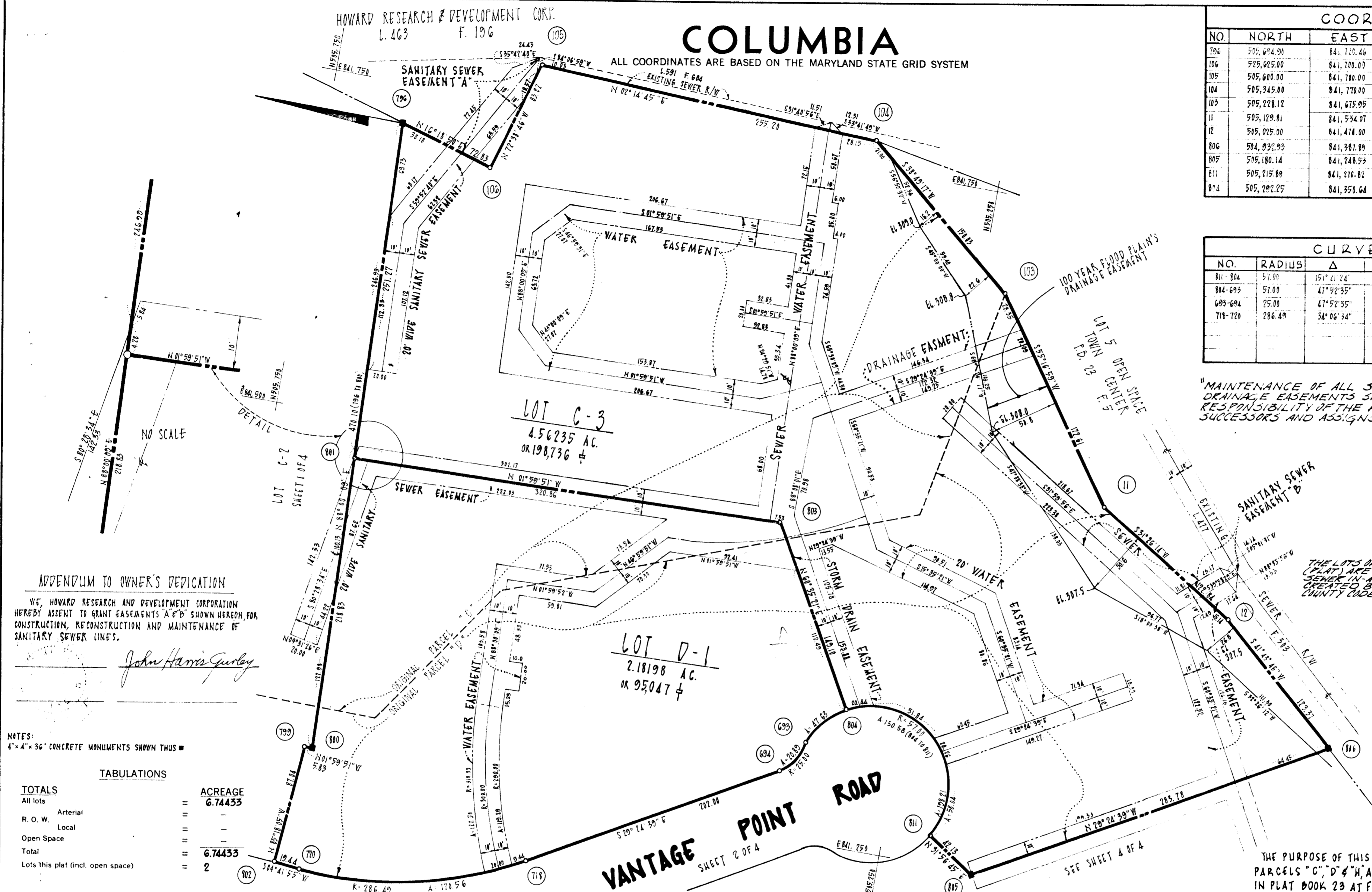
COORDINATES					
NO.	NORTH	EAST	NO.	NORTH	EAST
796	505,694.90	841,700.46	800	505,565.47	841,480.52
106	505,625.00	841,700.00	801	505,656.14	841,469.34
105	505,600.00	841,700.00	800	505,678.51	841,250.64
104	505,345.00	841,770.00	799	505,684.34	841,250.44
103	505,228.12	841,675.05	802	505,691.47	841,163.60
11	505,129.81	841,534.07	120	505,672.00	841,162.10
12	505,025.00	841,474.00	718	505,501.93	841,198.06
806	504,930.93	841,387.89	694	505,551.97	841,287.25
805	505,180.14	841,248.53	693	505,519.86	841,318.53
811	505,215.89	841,270.82			
814	505,282.25	841,350.64			

CURVE DATA						
NO.	RADIUS	Δ	ARC	TAN. CHORD	L.C.D.	
811-804	57.99	151° 21' 24"	159.58	223.27	110.46	N 40° 12' 03" E
804-693	57.00	47° 52' 35"	47.65	25.30	26.76	N 53° 20' 56" W
693-694	25.00	47° 52' 35"	20.89	11.10	20.29	N 53° 20' 56" W
718-720	286.49	34° 06' 34"	110.56	81.89	168.85	N 12° 21' 20" W

"MAINTENANCE OF ALL STORM DRAINS AND/OR DRAINAGE EASEMENTS SHOWN HEREON ARE THE RESPONSIBILITY OF THE PROPERTY OWNER, ITS SUCCESSORS AND ASSIGNS."

THE LOTS OR PARCELS SHOWN ON THIS PLAN ARE SUBJECT TO THE SUPPLEMENTAL DEED AND CONSTRUCTION CHARGE CREATED BY SECTION 23.5(A) OF THE HOWARD COUNTY CODE AND EXECUTIVE ORDER NO. 72-9.

RECEIVED
AUG 19 1974
BUREAU OF ENGINEERING



APPENDIUM TO OWNER'S DEDICATION

WE, HOWARD RESEARCH AND DEVELOPMENT CORPORATION HEREBY ASSENT TO GRANT EASEMENTS A, B, C, D, E, F, G, H, I, J, K, L, M, N, O, P, Q, R, S, T, U, V, W, X, Y, Z SHOWN HEREON FOR CONSTRUCTION, RECONSTRUCTION AND MAINTENANCE OF SANITARY SEWER LINES.

John Harris Gurley

NOTES:
4" x 4" x 36" CONCRETE MONUMENTS SHOWN THUS

TABULATIONS

TOTALS	ACREAGE
All lots	6.74433
R. O. W. Arterial	-
Local	-
Open Space	-
Total	6.74433
Lots this plat (incl. open space)	2

APPROVED: FOR PUBLIC WATER AND PUBLIC SEWERAGE SYSTEMS, HOWARD COUNTY HEALTH DEPARTMENT.

COUNTY HEALTH OFFICER _____ DATE _____

APPROVED: HOWARD COUNTY OFFICE OF PLANNING AND ZONING.

DIRECTOR *John Harris Gurley* 8-13-74 DATE _____

APPROVED: FOR PUBLIC WATER AND PUBLIC SEWERAGE, STORM DRAINAGE SYSTEMS AND PUBLIC ROADS. HOWARD COUNTY DEPARTMENT OF PUBLIC WORKS.

DIRECTOR _____ DATE _____

SURVEYOR'S, ENGINEER'S and OWNER'S CERTIFICATES

The undersigned, owner of the property shown on this Plat, grants unto, (1) Howard County, Maryland, its successors and assigns, the right to lay, construct and maintain water and sewer mains and laterals therefor in and under all road and street rights-of-way as shown hereon; (2) further it adopts this plan of subdivision and reserves the fee simple title to the beds of the streets and/or roads hereon, except however, for one dollar consideration, it herewith grants the right and option to Howard County, Maryland, to acquire (within a period of five years commencing with the date of recording of this plat among the Land Records of Howard County) the fee simple title to the beds of the streets and/or roads shown hereon.

The undersigned certify that the subdivision plan shown hereon is correct as complying with the requirements of Final Development Plan Phase 107-A recorded in Plat Book 20 Folios 69 to 66, each inclusive, with all Open Space shown thereon to be used for drainage easements, if necessary, and the requirements of Article 21, Section 3-108 of the annotated code of Maryland concerning the making of this Plat and setting of markers have been complied with. The land shown hereon is a part of the land which by deeds dated 5-28-71 and 1-2-73 and recorded among the Land Records of Howard County, Maryland in Liber 560 Folio 182 was granted and conveyed by The Howard Research and Development Corporation to Columbia Oaks Corporation.

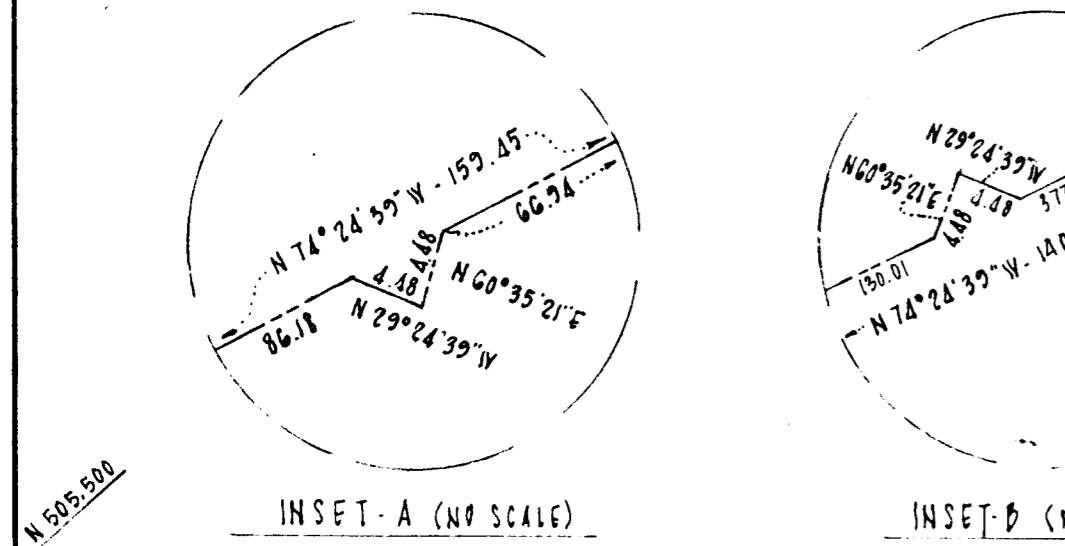
PROFESSIONAL LAND SURVEYOR (By) *James M. Fowler* 421A Reg. No. _____
 PROFESSIONAL ENGINEER (By) *John A. Morris* 4849 Reg. No. _____
 OWNER (By) *George L. Fisher* Auth. Agent
 Macris - Fowler Associates 27 W. Jefferson St., Rockville, Md.
 Macris - Fowler Associates 817 Silver Spring Ave., Silver Spring, Md.
 Columbia Oaks Corporation 1211 Connecticut Ave. N.W. Wash. D.C. 20036

RECORDED IN PLAT BOOK 29 FOLIO 49
 on Aug 13, 1974 among The
 Land Records of Howard County, Maryland.

COLUMBIA TOWN CENTER
 LOTS C-1, C-2, C-3, D-1, D-2 & D-3
 A RESUBDIVISION OF PARCELS C, D, H
 SECTION 7
 AREA 7
 Sheet 3 of 4
 5th Election District of Howard County, Md.
 Scale: 1" = 50' Date: November 20, 1973

COORDINATES					
NO.	NORTH	EAST	NO.	NORTH	EAST
807	505,546.64	841,223.19	72	504,987.15	840,961.08
809	505,502.51	841,244.98	100	505,128.70	840,934.25
802	505,282.31	841,246.92	810	505,150.62	840,919.32
811	505,215.89	841,270.92	809	505,199.53	840,861.54
805	505,180.14	841,248.53	808	505,260.70	841,067.66
806	504,932.93	841,337.89			
13	504,840.00	841,305.00			
14	504,812.17	841,117.86			

CURVE DATA						
NO.	RADIUS	Δ	ARC	TAN	CHORD	L.C.D.
691-692	25.00	47°52'35"	20.89	11.10	20.29	S 05°28'21" E
692-811	57.00	76°31'11"	76.19	44.95	70.59	S 19°47'39" E

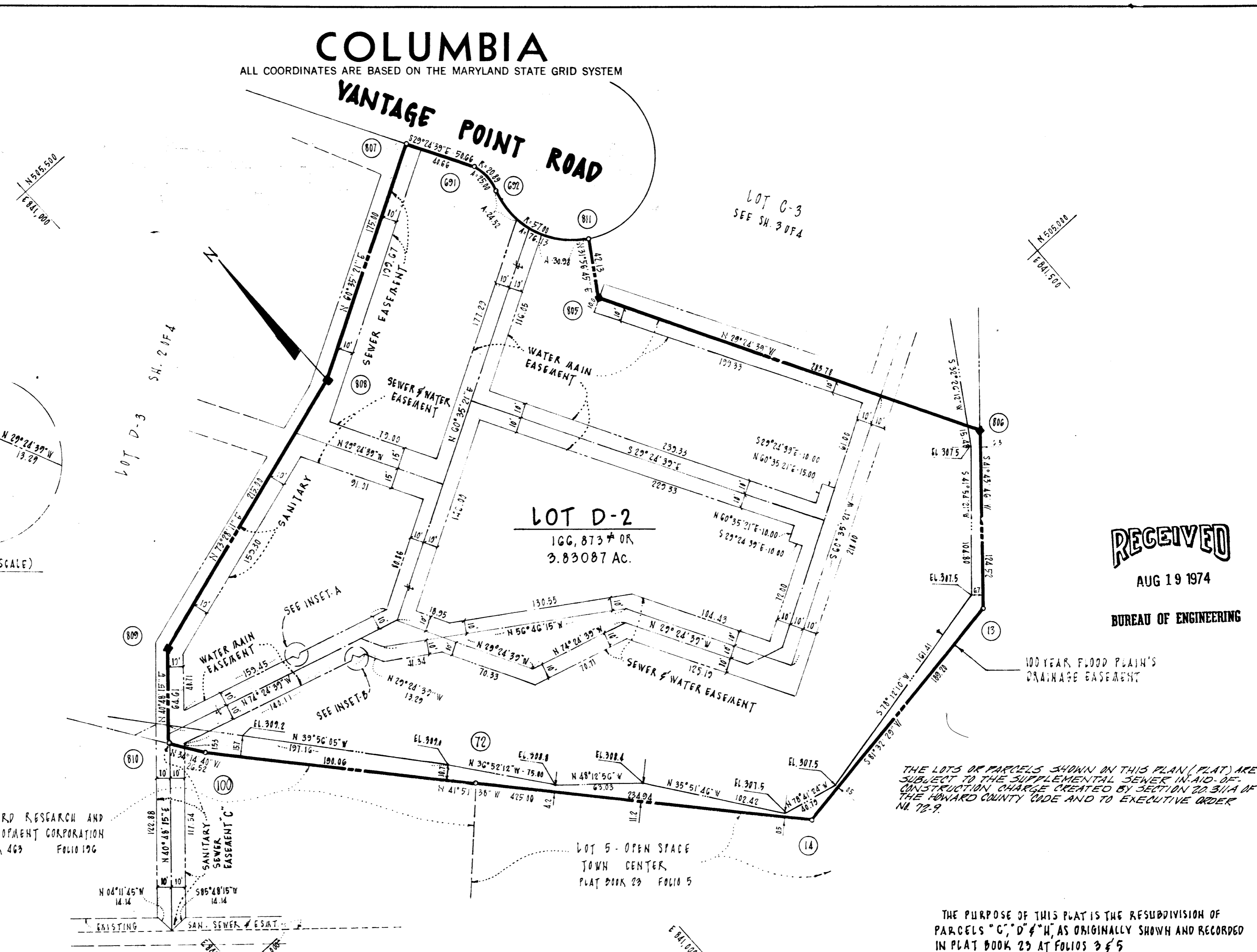


APPENDUM TO OWNER'S DEDICATION
 WE, HOWARD RESEARCH AND DEVELOPMENT CORPORATION, HEREBY ASSENT TO GRANT EASEMENT "C", SHOWN HEREON FOR THE CONSTRUCTION, RECONSTRUCTION AND MAINTENANCE OF SANITARY SEWER LINES.

John Harris Guley

NOTE:
 4" x 4" x 36" CONCRETE MONUMENTS SHOWN THIS ARE PLANTED WHERE INDICATED HEREON.

TABULATIONS		ACREAGE
TOTALS	All lots	3.83087 AC.
	R. O. W. Arterial	-
	Local	-
	Open Space	-
	Total	3.83087 AC.
	Lots this plat (incl. open space)	1



RECEIVED
 AUG 19 1974
 BUREAU OF ENGINEERING

THE LOTS OR PARCELS SHOWN ON THIS PLAN (PLAT) ARE SUBJECT TO THE SUPPLEMENTAL SEWER IN-AID-OF-CONSTRUCTION CHARGE CREATED BY SECTION 20.311A OF THE HOWARD COUNTY CODE AND TO EXECUTIVE ORDER NO. 72-9.

THE PURPOSE OF THIS PLAT IS THE RESUBDIVISION OF PARCELS "C", "D" & "H", AS ORIGINALLY SHOWN AND RECORDED IN PLAT BOOK 25 AT FOLIOS 3 & 5

APPROVED: FOR PUBLIC WATER AND PUBLIC SEWERAGE SYSTEMS, HOWARD COUNTY HEALTH DEPARTMENT.

[Signature] 8-13-74
 COUNTY HEALTH OFFICER DATE

APPROVED: HOWARD COUNTY OFFICE OF PLANNING AND ZONING.

[Signature] 8-13-74
 DIRECTOR DATE

APPROVED: FOR PUBLIC WATER AND PUBLIC SEWERAGE, STORM DRAINAGE SYSTEMS AND PUBLIC ROADS, HOWARD COUNTY DEPARTMENT OF PUBLIC WORKS.

 DIRECTOR DATE

SURVEYOR'S, ENGINEER'S and OWNER'S CERTIFICATES

The undersigned, owner of the property shown on this Plat, grants unto, (1) Howard County, Maryland, its successors and assigns, the right to lay, construct and maintain water and sewer mains and laterals therefor in and under all road and street rights-of-way as shown hereon; (2) further it adopts this plan of subdivision and reserves the fee simple title to the beds of the streets and/or roads hereon, except however, for one dollar consideration, it herewith grants the right and option to Howard County, Maryland to acquire (within a period of five years commencing with the date of recording of this plat among the Land Records of Howard County) the fee simple title to the beds of the streets and/or roads shown hereon.

The undersigned certify that the subdivision plan shown hereon is correct as complying with the requirements of Final Development Plan Phase 107-A recorded in Plat Book 20 Folios 63 to 66, each inclusive, with all Open Space shown thereon to be used for drainage easements, if necessary, and the requirements of Article 21, Section 3-10B of the annotated code of Maryland concerning the making of this Plat and setting of markers have been complied with. The land shown hereon is a part of the land which by deed dated January 2, 1973 and recorded among the Land Records of Howard County, Maryland in Liber 620 Folio 329 was granted and conveyed by The Howard Research and Development Corporation to Columbia Oaks Corporation.

PROFESSIONAL LAND SURVEYOR (By) *James M. Fowler* #214 Reg. No. 4214
 Macris - Fowler Associates
 27 W. Jefferson St., Rockville, Md.

PROFESSIONAL ENGINEER (By) *John A. Macris* #5819 Reg. No. 4214
 Macris - Fowler Associates
 817 Silver Spring Ave., Silver Spring, Md.

OWNER (By) *George L. Nolan*
 COLUMBIA OAKS CORPORATION
 1211 CONNECTICUT AVENUE N.W. WASH. D.C. 20036

RECORDED IN PLAT BOOK 29 FOLIO 50
 on Aug 13, 1974 among The
 Land Records of Howard County, Maryland.

COLUMBIA TOWN CENTER
 LOTS C-1, C-2, C-3, D-1, D-2 & D-3
 A RESUBDIVISION OF PARCELS C, D & H

SECTION 7
 AREA 7
 Sheet 4 of 4
 5th Election District of Howard County, Md.
 Scale: 1" = 50' Date: November, 20, 1973