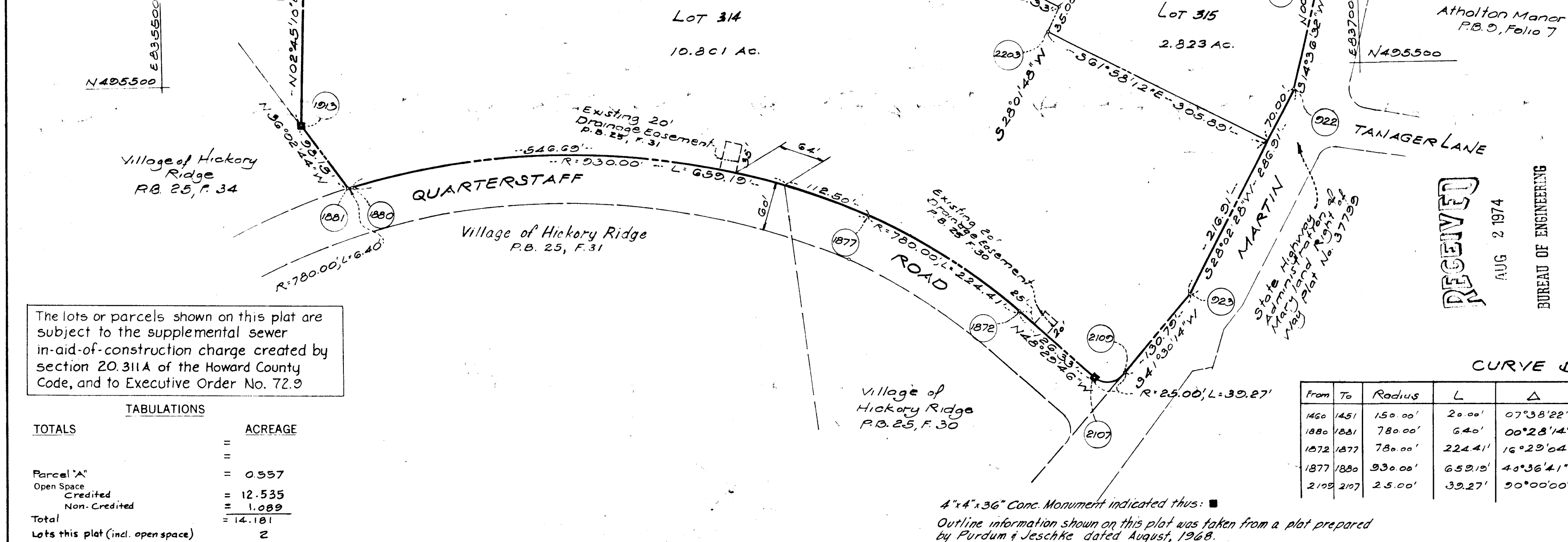
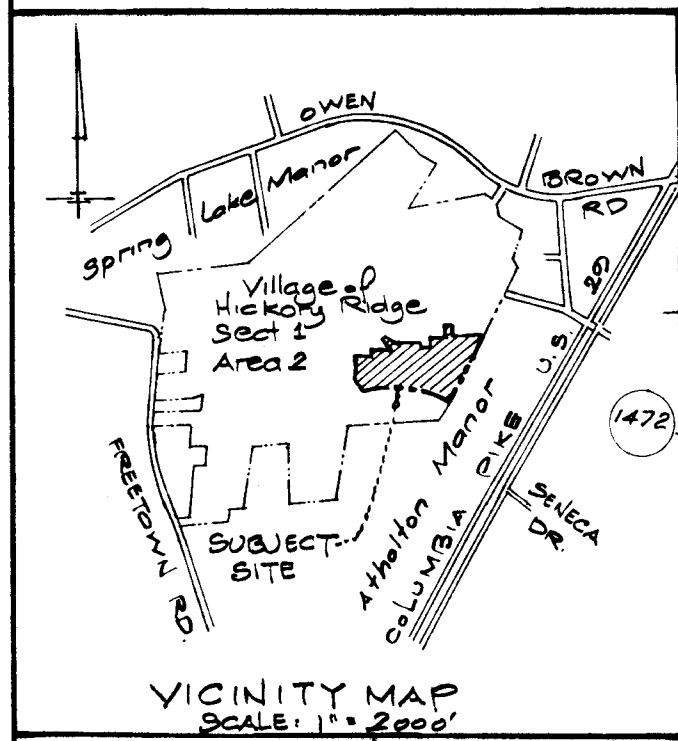


COLUMBIA

ALL COORDINATES ARE BASED ON THE MARYLAND STATE GRID SYSTEM

COORDINATES

Nº	NORTH	EAST
921	495661.02	836962.99
922	495470.06	836913.22
923	495216.83	836778.35
1200	495815.63	836971.95
1405	495814.81	836756.95
1406	495914.80	836756.57
1407	495914.68	836724.57
1408	495804.68	836724.99
1409	495804.41	836652.99
1410	495819.41	836652.93
1413	495819.10	836572.93
1414	495800.10	836573.01
1416	495799.49	836415.01
1417	495864.70	836414.76
1451	495951.60	836054.12
1452	495866.72	836162.09
1454	495844.96	836129.96
1455	495767.75	836129.35
1456	495768.52	836032.62
1457	495778.52	836032.70
1460	495936.74	836040.74
1463	495779.52	835907.71
1464	495764.52	835907.59
1472	495766.32	835822.60
1841	495785.64	836975.85
1847	495785.63	836972.06
1872	495800.44	836561.77
1880	495376.14	835731.48
1881	495374.40	835725.32
1913	495453.75	835667.57
2107	495116.72	836656.39
2109	495081.43	836658.54
1842	495784.81	836758.85
1843	495632.81	836759.43
1844	495633.35	836899.43
1845	495745.35	836899.00
2206	495683.17	836438.45
2203	495352.02	836610.31
2204	495582.92	836626.76



The lots or parcels shown on this plat are subject to the supplemental sewer in-aid-of-construction charge created by section 20.311A of the Howard County Code, and to Executive Order No. 72.9

TABULATIONS

TOTALS	ACREAGE
Parcel 'A'	= 0.557
Open Space	= 12.535
Credited	= 1.089
Non-Credited	= 14.181
Total	= 14.181
Lots this plat (incl. open space)	2

CURVE DATA

From	To	Radius	L	Δ	T	Chord
1460	1451	150.00'	20.00'	07°38'22"	9.97'	N 41°59'33"E - 19.99'
1880	1881	780.00'	64.00'	00°28'14"	3.20'	S 74°10'22"W - 64.00'
1872	1877	780.00'	224.41'	16°29'04"	112.99'	N 56°44'18"W - 223.64'
1877	1880	930.00'	659.19'	40°36'41"	344.12'	N 78°54'10"W - 645.47'
2109	2107	25.00'	39.27'	90°00'00"	25.00'	S 86°56'12"W - 35.36'

RECEIVED
AUG 2 1974
BUREAU OF ENGINEERING

4" x 4" x 3/8" Conc. Monument indicated thus: ■
Outline information shown on this plat was taken from a plat prepared by Purdum & Jeschke dated August, 1968.

APPROVED: FOR PUBLIC WATER AND PUBLIC SEWERAGE SYSTEMS, HOWARD COUNTY HEALTH DEPARTMENT.
 COUNTY HEALTH OFFICER _____ DATE _____
 APPROVED: HOWARD COUNTY OFFICE OF PLANNING AND ZONING.
 DIRECTOR _____ DATE 7-24-74
 APPROVED: FOR PUBLIC WATER AND PUBLIC SEWERAGE, STORM DRAINAGE SYSTEMS AND PUBLIC ROADS, HOWARD COUNTY DEPARTMENT OF PUBLIC WORKS.
 DIRECTOR _____ DATE _____

SURVEYOR'S, ENGINEER'S and OWNER'S CERTIFICATES

The undersigned, owner of the property shown on this Plat, grants unto, (1) Howard County, Maryland, its successors and assigns, the right to lay, construct and maintain water and sewer mains and laterals therefor in and under all road and street rights-of-way as shown hereon; (2) further it adopts this plan of subdivision and reserves the fee simple title to the beds of the streets and/or roads hereon, except however, for one dollar consideration, it herewith grants the right and option to Howard County, Maryland to acquire (within a period of five years commencing with the date of recording of this plat among the Land Records of Howard County) the fee simple title to the beds of the streets and/or roads shown hereon, together with such adjacent land, if any, as may be shown on this plat as areas designated for the installation of street lighting facilities.

The undersigned certify that the subdivision plan shown hereon is correct as complying with the requirements of Final Development Plan Phase I, recorded in Plat Book 20 Folios 286 to 287, each inclusive, with all Open Space shown thereon to be used for drainage easements, if necessary, and the requirements of Article 21, Section 10 of the annotated code of Maryland concerning the making of this Plat and setting of markers have been complied with. The land shown hereon is a part of the land which by deed dated December 13, 1966 and recorded among the Land Records of Howard County, Maryland in Liber 463 Folio 196, was granted and conveyed by C. Aileen Ames to The Howard Research and Development Corporation.

PROFESSIONAL LAND SURVEYOR (By) _____ Reg. No. _____
 MCA Engineering Corporation 3589
 1020 Cromwell Bridge Rd, Towson Md 21204

PROFESSIONAL ENGINEER (By) _____ Reg. No. _____
 MCA Engineering Corporation 4047
 1020 Cromwell Bridge Rd, Towson Md 21204

OWNER (By) _____ Auth. Agent
 Howard Research & Development Corp.
 Columbia, Md 21044

RECORDED IN PLAT BOOK 29 FOLIO 42
 on _____, 19 _____ among The
 Land Records of Howard County, Maryland.

COLUMBIA
VILLAGE OF HICKORY RIDGE
PARCEL A and LOTS 314 and 315

SECTION 1 VOID
 AREA 2 3/17/76
 Sheet 1 of 1 (DPZ Record Book)
 5th Election District of Howard County, Md.
 Scale: 1" = 100' Date: _____