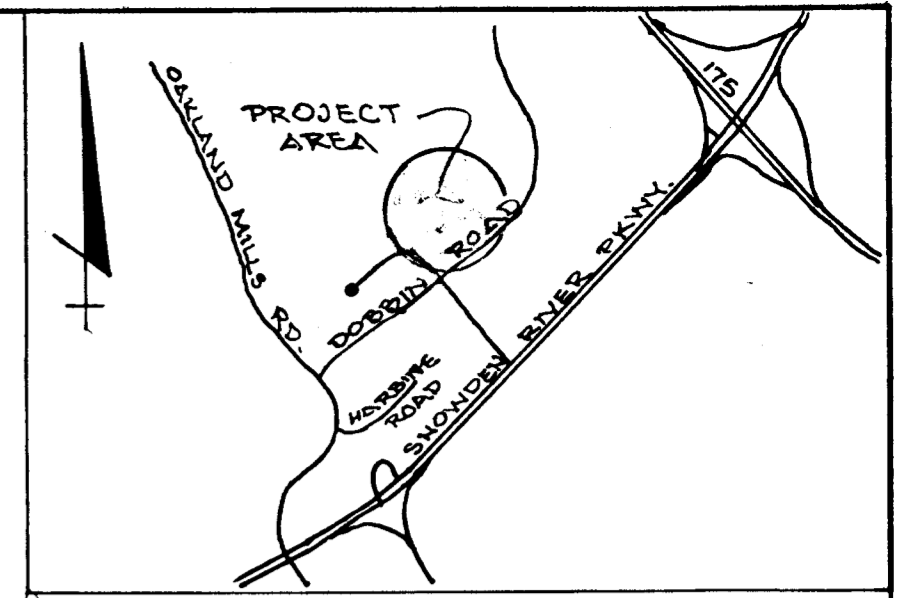


COLUMBIA

ALL COORDINATES ARE BASED ON THE MARYLAND STATE GRID SYSTEM

COORDINATES		
NO.	NORTH	EAST
78	494,263.86	850,884.83
206	493,803.23	850,416.67
519	494,024.55	850,143.88
520	494,267.69	850,251.88
522	493,802.46	850,374.25
526	494,512.43	849,998.00
551	493,999.10	850,605.49
552	494,207.31	850,389.51
553	494,423.29	850,597.73
554	494,215.08	850,813.71
556	494,604.33	850,709.79
557	494,450.37	851,001.67
560	494,859.78	850,725.10
561	494,660.32	850,603.65
563	494,622.15	850,487.95
590	494,777.64	850,105.96

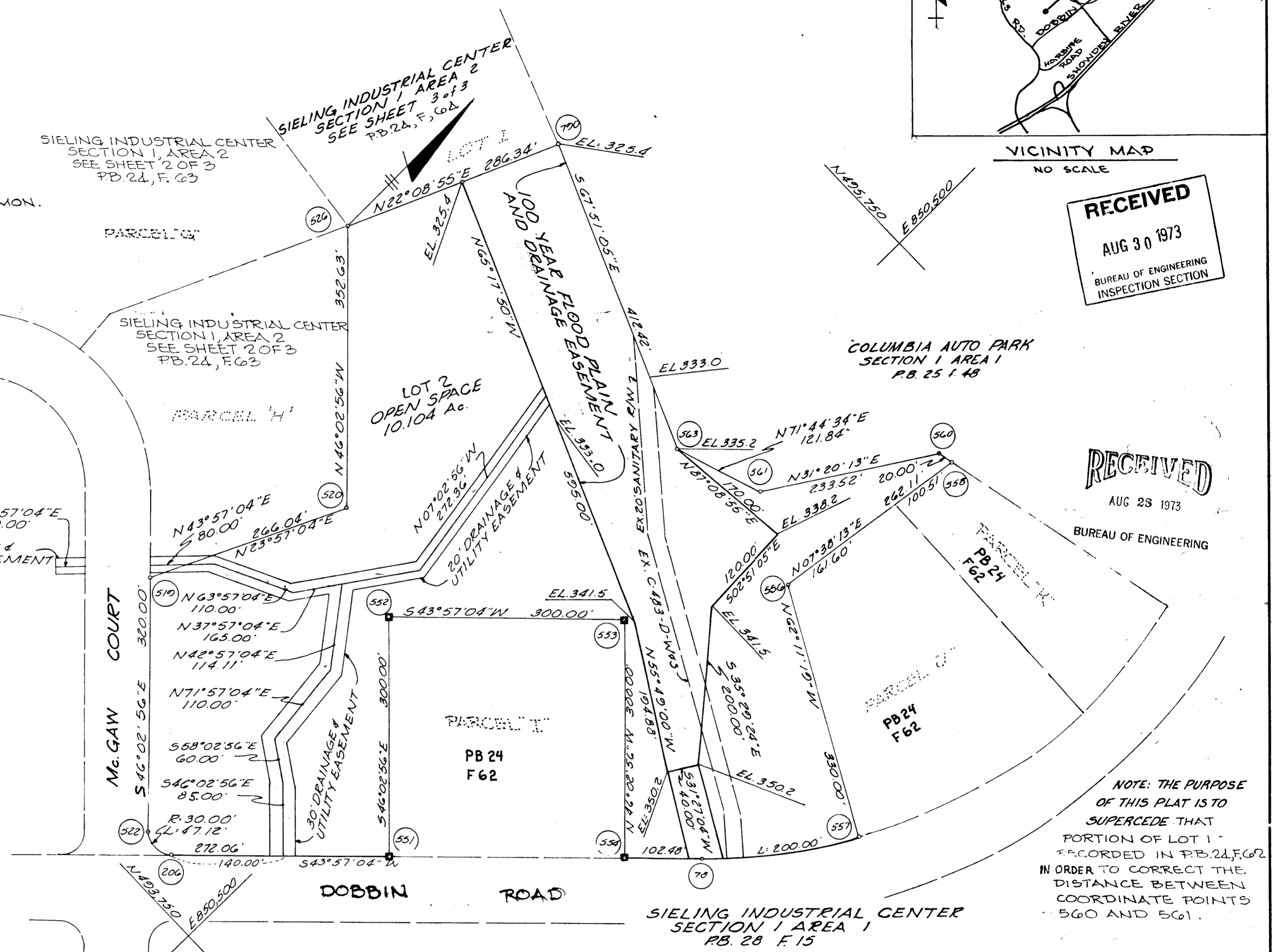
CURVE DATA						
NO.	RAD.	Δ	ARC.	TAN.	CHORD	L.C.B.
522-206	33.00	90°-00'-00"	47.12	30.00	42.43	S 88°-57'-04" W
78-559	710.00	56°-29'-19"	700.00	381.41	671.99	S 15°-42'-25" W



VICINITY MAP
NO SCALE

RECEIVED
AUG 30 1973
BUREAU OF ENGINEERING
INSPECTION SECTION

■ DENOTES 4" x 4" CONC. MON.



RECEIVED
AUG 23 1973
BUREAU OF ENGINEERING

NOTE:
THE LOTS OR PARCELS SHOWN ON THIS PLAT ARE SUBJECT TO THE SUPPLEMENTAL SEWER-IN-AID-OF-CONSTRUCTION CHANGE CREATED BY SECTION 20-311A OF THE HOWARD COUNTY CODE AND TO EXECUTIVE ORDER NO. 72-9.
MINIMUM BUILDING SETBACK RESTRICTIONS FROM PROPERTY LINES AND THE RIGHT-OF-WAY OF ANY PUBLIC ROAD OR STREET TO BE IN ACCORDANCE WITH THE RECORDED FINAL DEVELOPMENT PLAN CRITERIA.

PLAT TABULATIONS	
TOTALS	ACREAGE
All Parcels	= 0
R.O.W.	= 0
Open Space	= 10.104
Total	= 10.104
Lots this plat (incl. open space)	= 1

NOTE: THE PURPOSE OF THIS PLAT IS TO SUPERCEDE THAT PORTION OF LOT 1 RECORDED IN PB. 24, F. 62 IN ORDER TO CORRECT THE DISTANCE BETWEEN COORDINATE POINTS 560 AND 561.

APPROVED: FOR PUBLIC WATER AND PUBLIC SEWERAGE SYSTEMS, HOWARD COUNTY HEALTH DEPARTMENT.

COUNTY HEALTH OFFICER _____ DATE _____

APPROVED: HOWARD COUNTY OFFICE OF PLANNING AND ZONING.

DIRECTOR _____ DATE _____

APPROVED: FOR PUBLIC WATER AND PUBLIC SEWERAGE, STORM DRAINAGE SYSTEMS AND PUBLIC ROADS, HOWARD COUNTY DEPARTMENT OF PUBLIC WORKS.

DIRECTOR _____ DATE _____

SURVEYOR'S, ENGINEER'S and OWNER'S CERTIFICATES

The undersigned, owner of the property shown on this Plat, grants unto, (1) Howard County, Maryland, its successors and assigns, the right to lay, construct and maintain water and sewer mains and laterals therefor in and under all road and street rights-of-way as shown hereon; (2) further it adopts this plan of subdivision and reserves the fee simple title to the beds of the streets and/or roads hereon, except however, for one dollar consideration, it herewith grants the right and option to Howard County, Maryland to acquire (within a period of five years commencing with the date of recording of this plat among the Land Records of Howard County) the fee simple title to the beds of the streets and/or roads shown hereon, together with such adjacent land, if any, as may be shown on this plat as areas designated for the installation of street lighting facilities.

The undersigned certify that the subdivision plan shown hereon is correct as complying with the requirements of Final Development Plan Phase 128 recorded in Plat Book 20, Folios 174 to 177, each inclusive, with all Open Space shown thereon to be used for drainage easements, if necessary, and the requirements of Article 21, Sect. 3-10B of the annotated code of Maryland concerning the making of this Plat and setting of markers have been complied with. The land shown hereon is a part of the land which by deed dated December 13, 1966 and recorded among the Land Records of Howard County, Maryland in Liber 463 Folio 196, was granted and conveyed by C. Aileen Ames to The Howard Research and Development Corporation.

PROPERTY LINE SURVEYOR (By) George Chagitan 29
GREEN ASSOCIATES, INC.
TOWSON, MARYLAND 21204

PROFESSIONAL ENGINEER (By) _____ 5407
GREEN ASSOCIATES, INC.
TOWSON, MARYLAND 21204

OWNER (By) George P. Barber
THE HOWARD RESEARCH & DEVELOPMENT CORP. Auth. Agent
COLUMBIA, MARYLAND 21044

RECORDED IN PLAT BOOK 20 FOLIO 71
on AUG 23, 1973 among The Land Records of Howard County, Maryland.

COLUMBIA
SIELING INDUSTRIAL CENTER

SECTION 1
AREA 2
Sheet 1 of 1
6TH Election District of Howard County, Md.
Scale: 1" = 100' Date: 6-13-73

62

INSPECTION F-73-94c