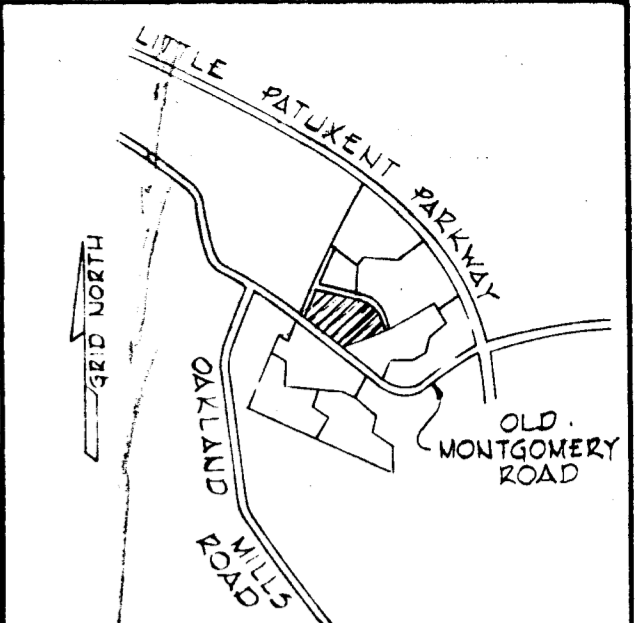


COLUMBIA

ALL COORDINATES ARE BASED ON THE MARYLAND STATE GRID SYSTEM

CURVE DATA						
NOS.	RADIUS	Z	ARC	TAN.	CHORD	L.C.B.
226 - 227	570.00'	10° 54' 24"	109.50'	54.42'	109.34'	109° 03' 15"
228 - 229	25.00'	89° 59' 58"	39.27'	25.00'	35.35'	186° 29' 35"
230 - 231	150.00'	14° 50' 06"	38.84'	19.53'	38.73'	148° 54' 40"
231 - 232	150.00'	14° 50' 05"	38.84'	19.53'	38.73'	148° 54' 44"
232 - 233	830.00'	25° 42' 35"	572.44'	189.41'	369.32'	154° 20' 57"
234 - 235	470.00'	61° 23' 59"	503.66'	279.06'	479.91'	36° 30' 15"
236 - 237	475.00'	51° 21' 19"	425.75'	228.37'	411.60'	70° 07' 34"

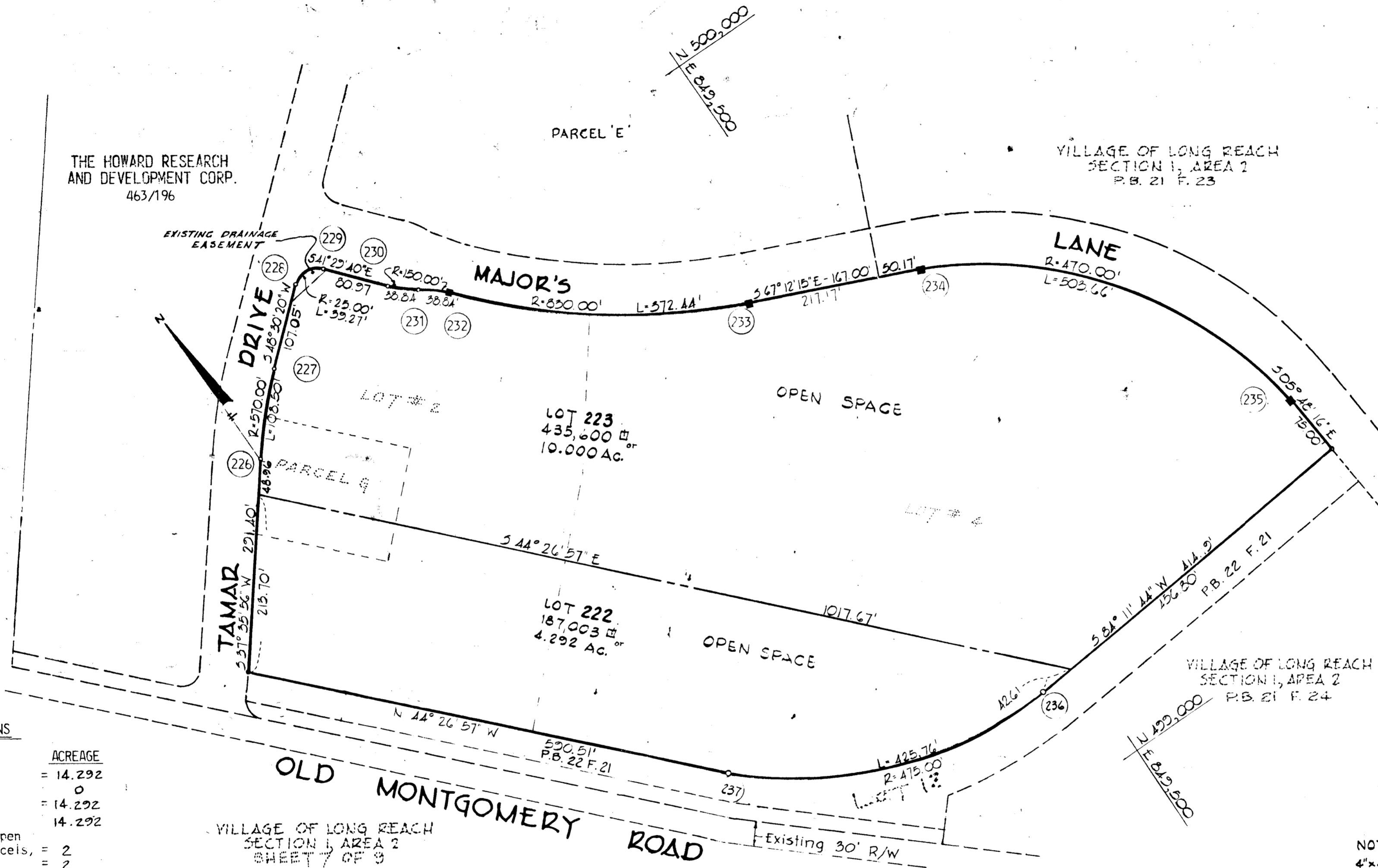


VICINITY MAP
Scale: 1" = 2000'

VILLAGE OF LONG REACH
SECTION 1, AREA 2
P.B. 21 F. 21

THE HOWARD RESEARCH
AND DEVELOPMENT CORP.
463/196

VILLAGE OF LONG REACH
SECTION 1, AREA 2
P.B. 21 F. 23



NOTE: Outlines shown hereon taken from Plat of Section 1 - Area 2 Sheet 3 of 9 - Village of Longreach recorded in Plat Book 21 at Folio 22 Prepared by Whitman Reardon and Associates.

NOTE: THE PURPOSE OF THIS RESUB-DIVISION IS TO DELETE PARCEL G AND CREATE NEW LOTS 222 & 223 FROM FORMER LOTS 2 AND 4, AND PARCEL G.

The undersigned, owner of the property shown on this Plat, grants unto Howard County, Maryland, its successors and assigns, the right to lay, construct and maintain sewers, drains, water pipes and other municipal utilities and services, in and through the specific easement area shown hereon, to the end that the specific lots shall be thereby burdened with the right of way shown hereon.

By John Harris Gurley
The Howard Research and Development Corp.

RECEIVED
JUN 21 1973

NOTE: 4"x4"x36" Concrete Monuments indicated thus: ■

TABULATIONS

TOTALS	ACREAGE
All lots and Parcels	= 14.292
R.O.W.	= 0
Open Space	= 14.292
Total	= 14.292
Lots this plat (incl. open space and Parcels)	= 2
Open Space Lots	= 2
Parcels	= 0

APPROVED: For public water and public sewerage systems, Howard County Health Department.

RECEIVED
JUN 25 1973
County Health Officer

APPROVED: Howard County Office of Planning and Zoning.
William J. Denton 6/13/73
Director

APPROVED: For public water and public sewerage, storm drainage systems and public roads. Howard County Department of Public Works.
William J. Denton 6/13/73
Director

SURVEYOR'S, ENGINEER'S and OWNER'S CERTIFICATES

The undersigned, owner of the property shown on this Plat, grants unto, (1) Howard County, Maryland, its successors and assigns, the right to lay, construct and maintain water and sewer mains and laterals therefor in and under all road and street rights-of-way as shown hereon; (2) further it adopts this plan of subdivision and reserves the fee simple title to the beds of the streets and/or roads hereon, except however, for one dollar consideration, it herewith grants the right and option to Howard County, Maryland to acquire (within a period of five years commencing with the date of recording of this plat among the Land Records of Howard County) the fee simple title to the beds of the streets and/or roads shown hereon, together with such adjacent land, if any, as may be shown on this plat as areas designated for the installation of street lighting facilities

The undersigned certify that the subdivision plan shown hereon is correct as complying with the requirements of Final Development Plan Phase 89-A recorded in Plat Book 20, Folios 146 to 148, each inclusive, with all Open Space shown thereon to be used for drainage easements, if necessary, and the requirements of Article 17, Section 60 of the annotated code of Maryland concerning the making of this Plat and setting of markers have been complied with. The land shown hereon is a part of the land which by deed dated December 13, 1966 and recorded among the Land Records of Howard County, Maryland in Liber 463 Folio 196, was granted and conveyed by C. Aileen Ames to The Howard Research and Development Corporation.

PROFESSIONAL LAND SURVEYOR: (By) Curt A.H. Jeschke, Reg. No. 2351, Purdum and Jeschke, Engineers, 1023 N. Calvert St., Balto., Md. 21202

PROFESSIONAL ENGINEER: (By) Curt A.H. Jeschke, Reg. No. 2351, Purdum and Jeschke, Engineers, 1023 N. Calvert St., Balto., Md. 21202

OWNER: (By) John Harris Gurley, Auth. Agent, The Howard Research and Development Corp., Columbia, Md. 21043

RECORDED IN PLAT BOOK 25 FOLIO 57
on June 20, 1973 among The Land Records of Howard County, Maryland.

COLUMBIA
VILLAGE OF LONGREACH
LOTS 222 & 223, A
RESUBDIVISION OF LOT 2, LOT 4 AND PARCEL G

SECTION 1
AREA 2
Sheet 1 of 1
6th Election District of Howard County, Maryland
Scale: 1" = 100' Date: 3-06-73

INSPECTION 73-27