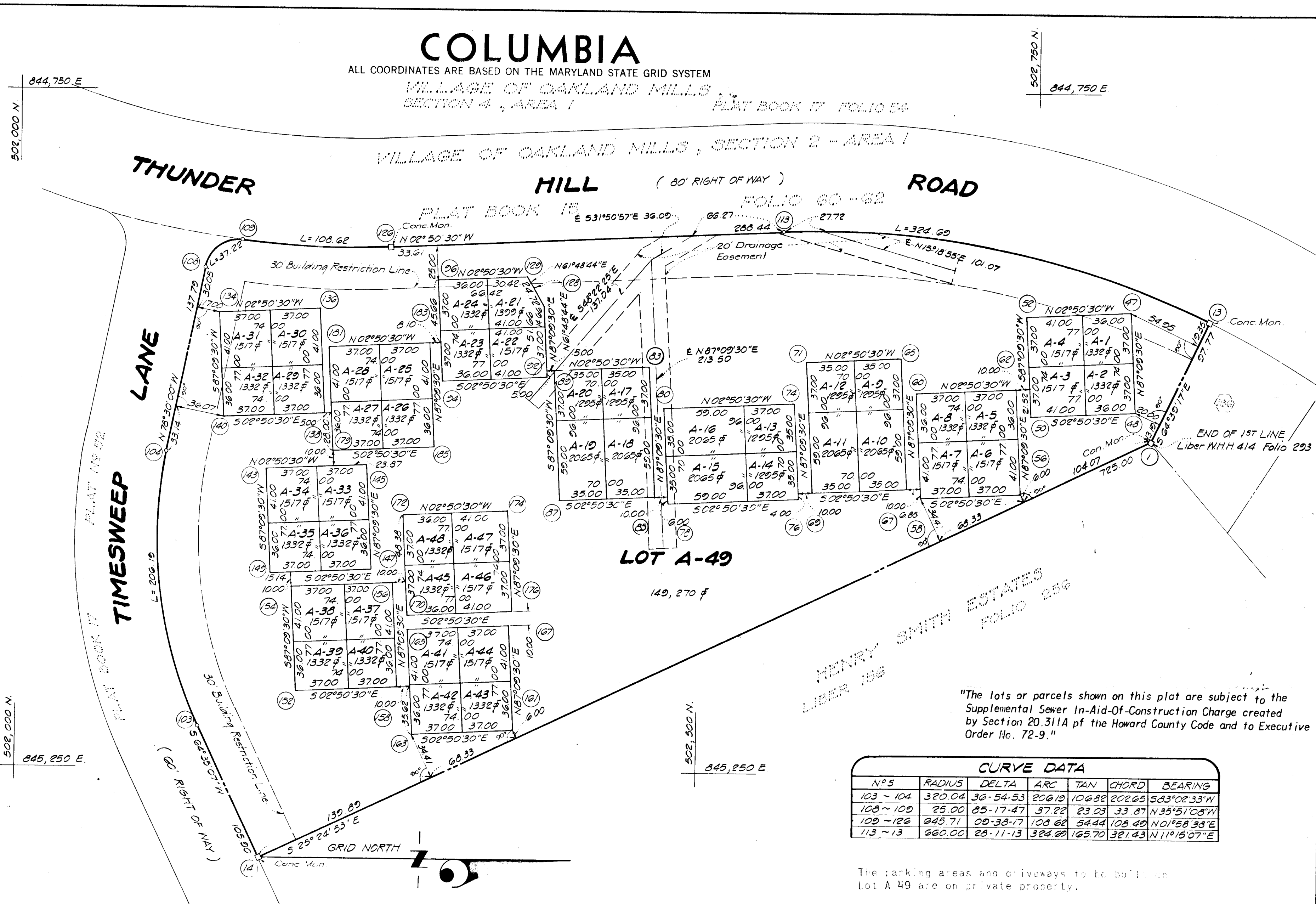


COORDINATES				
	NORTH		EAST	
14	502 179	903	845 315	417
103	502 134	454	845 219	766
104	502 109	907	845 018	609
108	502 137	377	844 883	587
109	502 164	834	844 863	748
126	502 273	260	844 867	421
113	502 561	345	844 853	192
15	502 876	594	844 913	910
1	502 834	740	845 004	270
47	502 818	645	844 909	875
48	502 822	314	844 983	784
50	502 745	408	844 987	601
52	502 741	740	844 913	692
56	502 738	171	845 043	513
58	502 664	262	845 047	181
60	502 660	445	844 970	277
62	502 734	354	844 966	608
65	502 649	176	844 944	951
67	502 653	935	845 040	832
69	502 584	020	845 044	302
71	502 579	261	844 948	421
74	502 570	761	844 978	879
76	502 574	231	845 048	793
78	502 478	349	845 053	552
80	502 474	879	844 983	639
83	502 463	305	844 952	174
85	502 468	064	845 048	055
87	502 398	150	845 051	526
89	502 393	391	844 955	644
92	502 388	645	844 980	886
94	502 311	740	844 964	703
96	502 308	071	844 890	794
128	502 386	084	844 909	294
129	502 374	405	844 887	501
179	502 232	154	845 017	375
181	502 228	337	844 940	470
183	502 302	846	844 936	802
185	502 306	083	845 013	707
134	502 148	046	844 916	421
136	502 221	955	844 912	752
138	502 225	772	844 989	658
140	502 151	863	844 993	326
143	502 182	579	845 029	848
145	502 256	489	845 026	179
147	502 260	306	845 103	085
149	502 186	397	845 106	753
152	502 205	829	845 192	896
154	502 202	011	845 115	990
156	502 275	920	845 112	322
158	502 279	738	845 189	227
161	502 365	400	845 220	637
163	502 297	491	845 224	306
165	502 287	674	845 147	401
167	502 361	583	845 143	732
170	502 287	178	845 137	413
172	502 283	510	845 063	503
174	502 360	415	845 059	687
176	502 364	084	845 133	595

COLUMBIA

ALL COORDINATES ARE BASED ON THE MARYLAND STATE GRID SYSTEM
VILLAGE OF OAKLAND MILLS
SECTION 4, AREA 1



TABULATIONS

TOTALS	ACREAGE
Residential Lots	= 1.6374 Acre
R.O.W.	= None
Community owned Lots	= 1
Residential Lots	= 48
Total Lots this plat (incl. Community owned Lots)	= 49

CURVE DATA

No	RADIUS	DELTA	ARC	TAN	CHORD	BEARING
103 ~ 104	320.04	36-54-53	206.19	106.88	202.25	S63°02'33"W
108 ~ 109	25.00	85-17-47	37.22	23.03	33.87	N35°51'08"W
109 ~ 126	645.71	09-38-17	103.62	54.44	108.49	N0°58'38"E
113 ~ 13	660.00	28-11-13	324.69	165.70	321.43	N11°15'07"E

The parking areas and driveways to be built on Lot A-49 are on private property.

APPROVED: FOR PUBLIC WATER AND PUBLIC SEWERAGE SYSTEMS, HOWARD COUNTY HEALTH DEPARTMENT.

Michael M. D. 12/12/72
COUNTY HEALTH OFFICER DATE

APPROVED: HOWARD COUNTY OFFICE OF PLANNING AND ZONING.

[Signature] 12-13-72
DIRECTOR DATE

APPROVED: FOR PUBLIC WATER AND PUBLIC SEWERAGE, STORM DRAINAGE SYSTEMS AND PUBLIC ROADS, HOWARD COUNTY DEPARTMENT OF PUBLIC WORKS.

[Signature] 12-13-72
DIRECTOR DATE

SURVEYOR'S, ENGINEER'S and OWNER'S CERTIFICATES

The undersigned, owner of the property shown on this Plat, grants unto, (1) Howard County, Maryland, its successors and assigns, the right to lay, construct and maintain water and sewer mains and laterals therefor in and under all road and street rights-of-way as shown hereon; (2) further it adopts this plan of *resubdivision* and reserves the fee simple title to the beds of the streets and/or roads hereon, except however, for one dollar consideration, it herewith grants the right and option to Howard County, Maryland to acquire (within a period of five years commencing with the date of recording of this plat among the Land Records of Howard County) the fee simple title to the beds of the streets and/or roads shown hereon, together with such adjacent land, if any, as may be shown on this plat as areas designated for the installation of street lighting facilities,

The undersigned certify that the subdivision plan shown hereon is correct as complying with the requirements of Final Development Plan Phase 51 recorded in Plat Book 16 Folios 126 to 130, each inclusive, with all Open Space shown thereon to be used for drainage easements, if necessary, and the requirements of Article 17, Section 60 of the annotated code of Maryland concerning the making of the plat and setting of markers have been complied with. The land shown hereon is a part of the land which by deed dated May 29, 1970 and recorded among the Land Records of Howard County, Maryland in Liber 535 Folio 20 was granted and conveyed by The Howard Research and Development Corporation (a Maryland Joint Venture Company), a Maryland Joint Venture Company.

PROFESSIONAL LAND SURVEYOR
(By) *[Signature]* 8011
MACKENZIE L. KELLY Reg. No.
GREENHORNE AND O'MARA, INC.
6715 KENILWORTH AVE.
RIVERDALE, MARYLAND 20840

PROFESSIONAL ENGINEER
(By) *[Signature]* 5097
RICHARD N. REED, JR. Reg. No.
GREENHORNE AND O'MARA, INC.
6715 KENILWORTH AVE.
RIVERDALE, MARYLAND 20840

OWNER
(By) *[Signature]*
HERMAN I. PORTEN, DIRECTOR
SALVATORE T. CALLERI, DIRECTOR
MODCOL-PAGE CO.
2411 BLUERIDGE AVE.
SILVER SPRING, MARYLAND 20902

RECORDED IN PLAT BOOK 26 FOLIO 21
on Dec. 13, 1972 among The
Land Records of Howard County, Maryland.

COLUMBIA
VILLAGE OF OAKLAND MILLS

SECTION 4 LOTS A-1 THRU A-49
AREA 1 RESUBDIVISION OF
Sheet 1 of 1 PARCEL A
GTH Election District of Howard County, Md.
Scale: 1" = 50' Date: MAR 24, 1972