

CURVE DATA						
NO.	RADIUS	LENGTH	CHD. BEARING	DISTANCE	Δ	TANGENT
Ⓜ	2934.79'	1307.35'	N17°-51'-56"W	1296.56'	25°28'46"	661.71'
Ⓛ	11,534.16'	391.79'	N04°-09'-10"W	391.75'	1°56'46"	195.90'
Ⓞ	2789.79'	1240.61'	N17°-51'-56"W	1230.50'	25°28'46"	627.95'
ⓐ	11,334.16'	386.69'	S04°-09'-10"E	386.66'	1°56'46"	193.36'

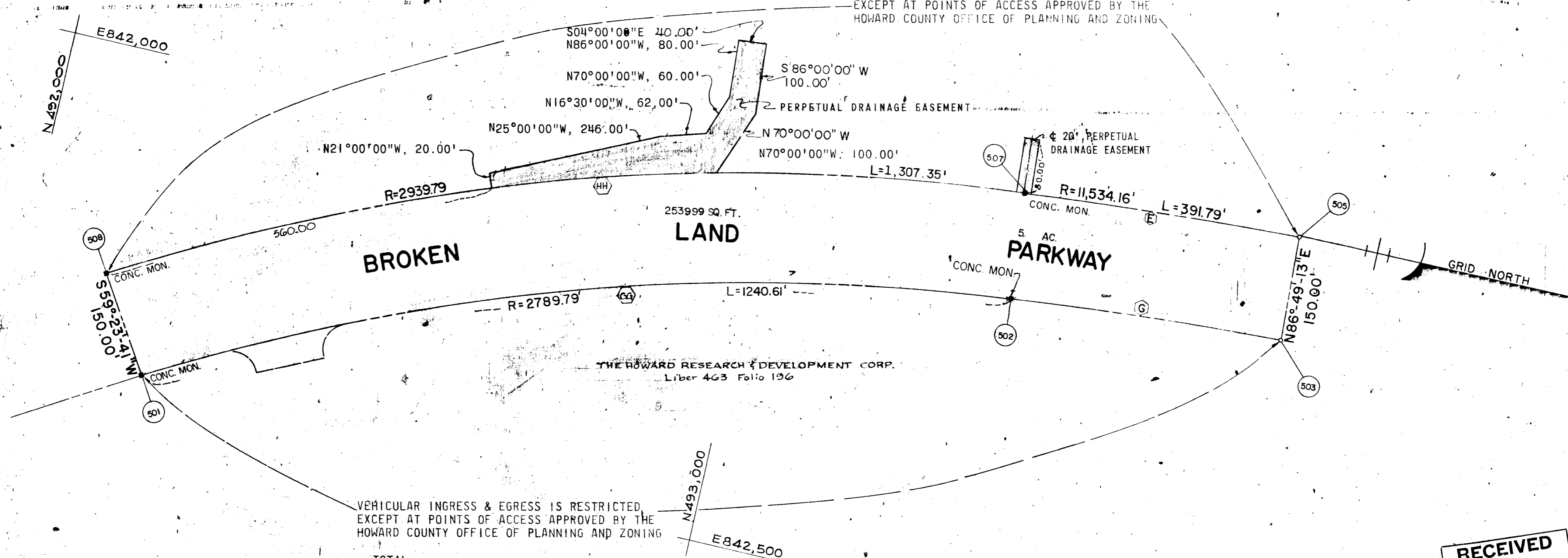
# COLUMBIA

ALL COORDINATES ARE BASED ON THE MARYLAND STATE GRID SYSTEM

COORDINATES		
NO.	NORTH	EAST
501	492,195.46	842,444.86
502	493,366.54	842,067.19
503	493,752.19	842,039.19
505	493,743.87	841,889.42
507	493,353.15	841,917.79
508	492,119.09	842,315.56

THE HOWARD RESEARCH AND DEVELOPMENT CORP.  
Liber 463 Folio 196

VEHICULAR INGRESS & EGRESS IS RESTRICTED  
EXCEPT AT POINTS OF ACCESS APPROVED BY THE  
HOWARD COUNTY OFFICE OF PLANNING AND ZONING



VEHICULAR INGRESS & EGRESS IS RESTRICTED  
EXCEPT AT POINTS OF ACCESS APPROVED BY THE  
HOWARD COUNTY OFFICE OF PLANNING AND ZONING

THE HOWARD RESEARCH & DEVELOPMENT CORP.  
Liber 463 Folio 196

TOTALS	TABULATIONS	ACREAGE	TOTALS	TABULATIONS	ACREAGE
R.O.W.		= 5,727	R.O.W.		= 18,788
Total		= 5,727	Total		= 18,788

**RECEIVED**  
JUN 05 1972  
BUREAU OF ENGINEERING  
INSPECTION SECTION

APPROVED: FOR PUBLIC WATER AND PUBLIC SEWERAGE SYSTEMS, HOWARD COUNTY HEALTH DEPARTMENT.

*George...*  
COUNTY HEALTH OFFICER DATE

APPROVED: HOWARD COUNTY OFFICE OF PLANNING AND ZONING.

*James...*  
DIRECTOR DATE

APPROVED: FOR PUBLIC WATER AND PUBLIC SEWERAGE, STORM DRAINAGE SYSTEMS AND PUBLIC ROADS, HOWARD COUNTY DEPARTMENT OF PUBLIC WORKS.

*William A. Allen*  
DIRECTOR DATE

SURVEYOR'S, ENGINEER'S and OWNER'S CERTIFICATES

The undersigned, owner of the property shown on this Plat, grants unto, (1) Howard County, Maryland, its successors and assigns, the right to lay, construct and maintain water and sewer mains and laterals therefor in and under all road and street rights-of-way as shown hereon; (2) further it adopts this plan of subdivision and reserves the fee simple title to the beds of the streets and/or roads hereon, except however, for one dollar consideration, it herewith grants the right and option to Howard County, Maryland to acquire (within a period of five years commencing with the date of recording of this plat among the Land Records of Howard County) the fee simple title to the beds of the streets and/or roads shown hereon, together with such adjacent land, if any, as may be shown on this plat as areas designated for the installation of street lighting facilities; (3) further it grants unto Howard County, Maryland the right to enter upon, maintain and construct storm drain facilities contained in the perpetual drainage easements shown hereon.

The undersigned certify that the subdivision plan shown hereon is correct as complying with the requirements of Final Development Plan Phase 114 recorded in Plat Book 20, Folios 137 to 140, each inclusive, with all Open Space shown thereon to be used for drainage easements, if necessary, and the requirements of Article 17, Section 60 of the annotated code of Maryland concerning the making of this Plat and setting of markers have been complied with. The land shown hereon is a part of the land which by deed dated December 13, 1966 and recorded among the Land Records of Howard County, Maryland in Liber 463 Folio 196, was granted and conveyed by C. Aileen Ames to The Howard Research and Development Corporation.

PROFESSIONAL LAND SURVEYOR  
(By) *Robert...*  
GREEN ASSOCIATES, INC.  
BALTIMORE, MARYLAND 21201

PROFESSIONAL ENGINEER  
(By) *Edward...*  
GREEN ASSOCIATES, INC.  
BALTIMORE, MARYLAND 21201

OWNER  
(By) *William...*  
THE HOWARD RESEARCH AND DEVELOPMENT CORP.  
BALTIMORE, MARYLAND

RECORDED IN PLAT BOOK 23 FOLIO 20  
on MAY 31, 1972 among The  
Land Records of Howard County, Maryland.

COLUMBIA  
BROKEN LAND PARKWAY

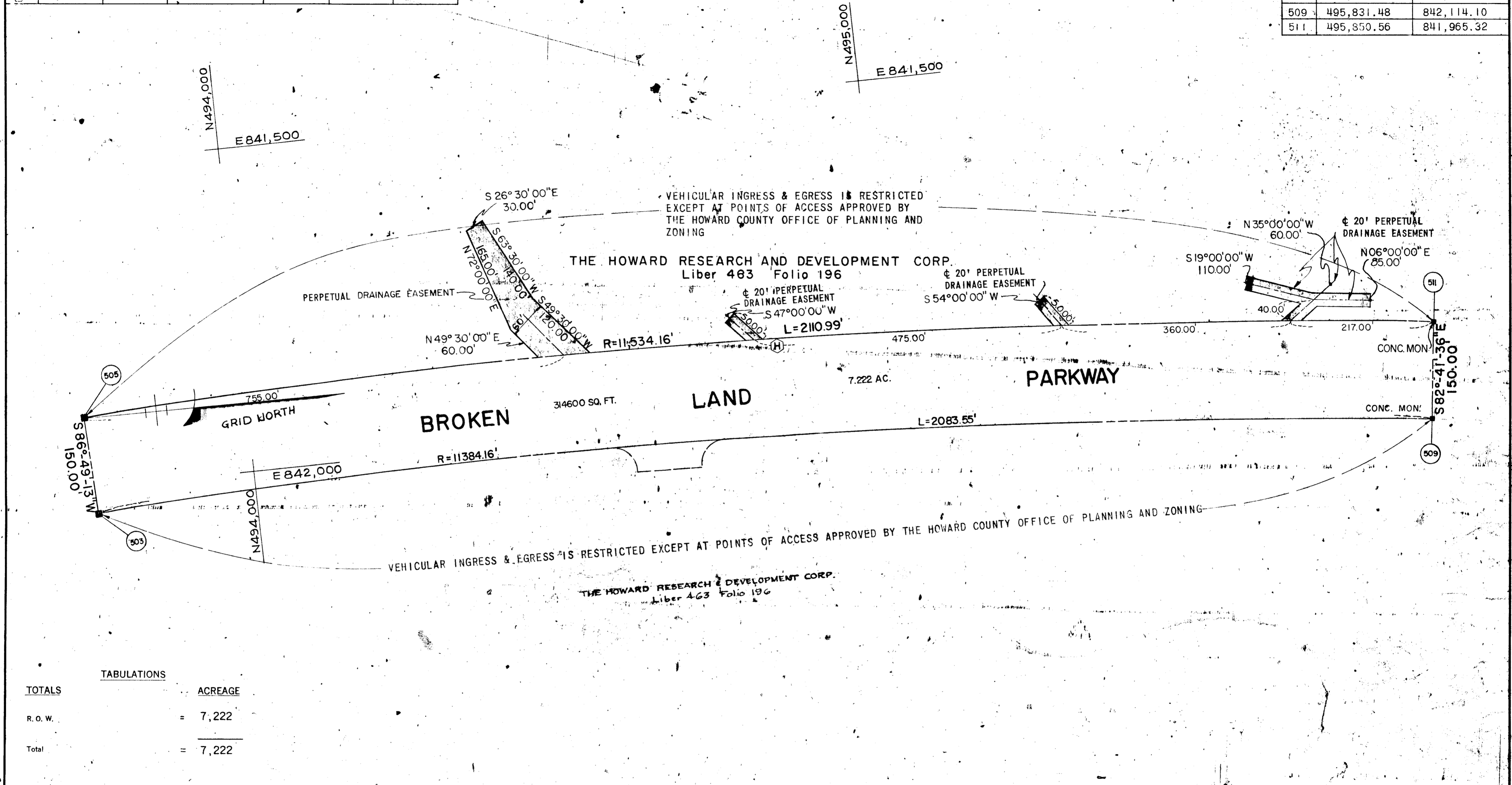
STEVEN'S FOREST ROAD  
TO A POINT 4839' FEET ± SOUTH  
Sheet 1 of 3  
6<sup>TH</sup> Election District of Howard County, Md.  
Scale: 1" = 100' Date: NOV. 1971

CURVE DATA						
NO.	RADIUS	LENGTH	CHD. BEARING	DISTANCE	Δ	TANGENT
(H)	11,534.16'	2110.99'	N02°-03'-48"E	2108.05'	10°29'11"	1,044.72'
(F)	11,384.16'	2083.55'	S02°-03'-48"E	2080.70'	10°29'11"	1,044.72'

# COLUMBIA

ALL COORDINATES ARE BASED ON THE MARYLAND STATE GRID SYSTEM

COORDINATES		
NO.	NORTH	EAST
503	493,752.19	842,039.19
505	493,743.87	841,889.42
509	495,831.48	842,114.10
511	495,850.56	841,965.32



TABULATIONS	
TOTALS	ACREAGE
R. O. W.	= 7.222
Total	= 7.222

APPROVED: FOR PUBLIC WATER AND PUBLIC SEWERAGE SYSTEMS, HOWARD COUNTY HEALTH DEPARTMENT.

*[Signature]* 5-27-77  
COUNTY HEALTH OFFICER DATE

APPROVED: HOWARD COUNTY OFFICE OF PLANNING AND ZONING.

*[Signature]* 5-31-77  
DIRECTOR DATE

APPROVED: FOR PUBLIC WATER AND PUBLIC SEWERAGE, STORM DRAINAGE SYSTEMS AND PUBLIC ROADS, HOWARD COUNTY DEPARTMENT OF PUBLIC WORKS.

*[Signature]* 5-31-77  
DIRECTOR DATE

**SURVEYOR'S, ENGINEER'S and OWNER'S CERTIFICATES**

The undersigned, owner of the property shown on this Plat, grants unto, (1) Howard County, Maryland, its successors and assigns, the right to lay, construct and maintain water and sewer mains and laterals therefor in and under all road and street rights-of-way as shown hereon; (2) further it adopts this plan of subdivision and reserves the fee simple title to the beds of the streets and/or roads hereon, except however, for one dollar consideration, it herewith grants the right and option to Howard County, Maryland to acquire (within a period of five years commencing with the date of recording of this plat among the Land Records of Howard County) the fee simple title to the beds of the streets and/or roads shown hereon, together with such adjacent land, if any, as may be shown on this plat as areas designated for the installation of street lighting facilities. (3) Further, it grants unto Howard County, Maryland the right to enter upon, maintain and construct storm drain facilities contained in the perpetual drainage easements shown hereon.

The undersigned certify that the subdivision plan shown hereon is correct as complying with the requirements of Final Development Plan Phase 114 recorded in Plat Book 201, Folios 137 to 140, each inclusive, with all Open Space shown thereon to be used for drainage easements, if necessary, and the requirements of Article 17, Section 60 of the annotated code of Maryland concerning the making of this Plat and setting of markers have been complied with. The land shown hereon is a part of the land which by deed dated December 13, 1966 and recorded among the Land Records of Howard County, Maryland in Liber 463 Folio 196, was granted and conveyed by C. Aileen Ames to The Howard Research and Development Corporation.

PROFESSIONAL LAND SURVEYOR (By) <i>[Signature]</i> GREEN ASSOCIATES, INC. BALTIMORE, MARYLAND 21201	PROFESSIONAL ENGINEER (By) <i>[Signature]</i> GREEN ASSOCIATES, INC. BALTIMORE, MARYLAND 21201	OWNER (By) <i>[Signature]</i> THE HOWARD RESEARCH AND DEVELOPMENT CORP. COLUMBIA, MARYLAND 21043
--	---	---

RECORDED IN PLAT BOOK 23 FOLIO 21  
on MAY 31, 1972 among The  
Land Records of Howard County, Maryland.

**COLUMBIA  
BROKEN LAND PARKWAY**

STEVEN'S FOREST ROAD  
TO A POINT 4839' FEET ± SOUTH

Sheet 2 of 3  
G.T.H. Election District of Howard County, Md.  
Scale: 1" = 100' Date: NOV. 1971

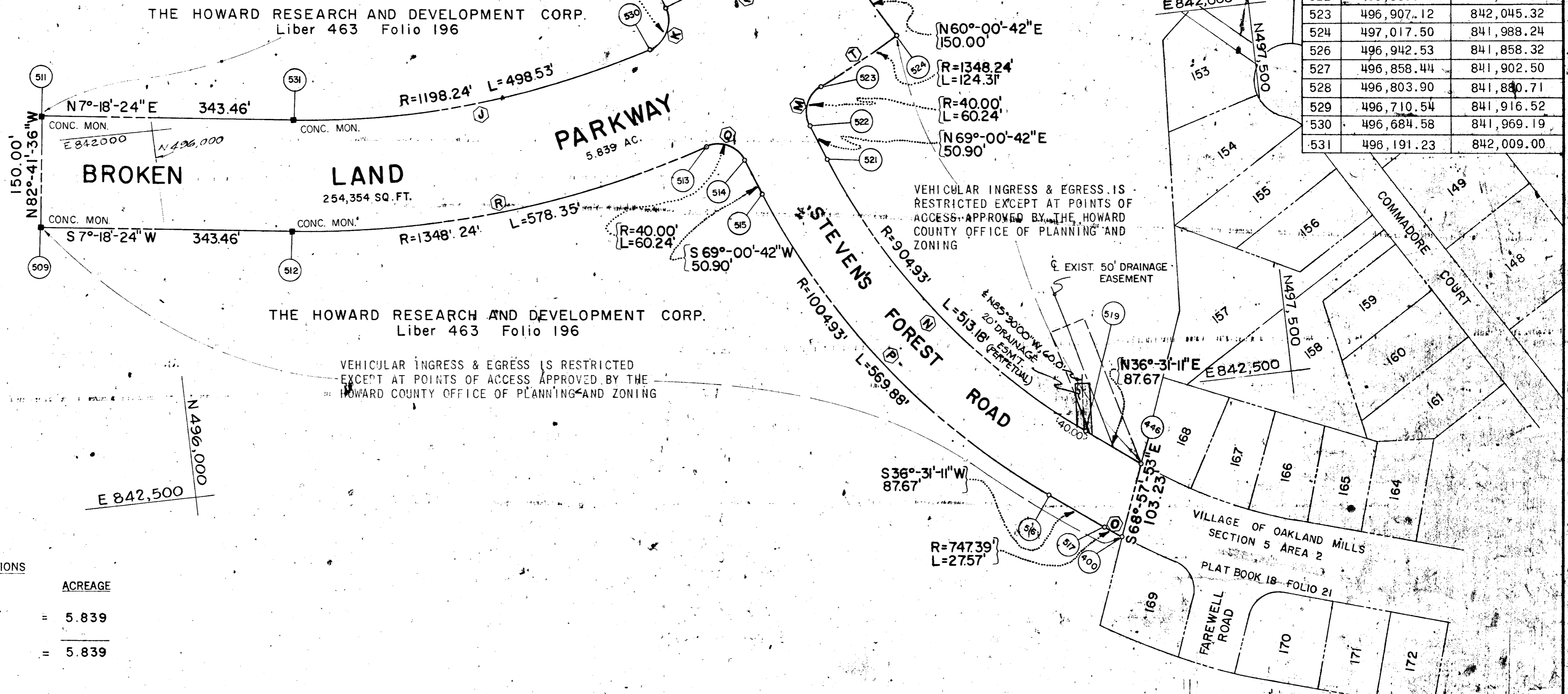
CURVE DATA						
NO.	RADIUS	LENGTH	CHD. BEARING	DISTANCE	Δ	TANGENT
1	1198.24'	498.53'	N04°-36'-45"W	494.95'	23°50'18"	252.93'
2	40.00'	65.94'	N63°-45'-36"W	58.73'	94°28'00"	43.25'
3	40.00'	65.94'	N21°-47'-00"E	58.73'	94°28'00"	43.25'
4	40.00'	60.24'	S67°-50'-49"W	54.70'	86°16'30"	37.48'
5	904.93'	513.18'	N52°-45'-57"E	506.32'	32°29'28"	263.69'
6	747.39'	27.57'	S35°-27'-47"W	27.57'	02°06'50"	13.79'
7	1004.93'	569.88'	S52°-45'-57"W	562.28'	32°29'30"	292.83'
8	40.00'	60.24'	S25°-52'-13"W	54.70'	86°16'30"	37.48'
9	1348.24'	578.35'	S04°-58'-56"E	573.92'	24°34'40"	293.69'
10	1198.24'	95.02'	N27°-43'-01"W	94.99'	04°32'36"	47.53'
11	1348.24'	124.31'	S27°-20'-40"E	124.27'	05°16'58"	62.20'

# COLUMBIA

ALL COORDINATES ARE BASED ON THE MARYLAND STATE GRID SYSTEM

VEHICULAR INGRESS & EGRESS IS RESTRICTED EXCEPT AT POINTS OF ACCESS APPROVED BY THE HOWARD COUNTY OFFICE OF PLANNING AND ZONING

COORDINATES		
NO.	NORTH	EAST
509	495,831.48	842,114.10
511	495,850.56	841,965.33
512	496,172.15	842,157.78
513	496,743.90	842,107.94
514	496,793.13	842,131.81
515	496,811.36	842,179.33
516	497,151.58	842,627.00
517	497,222.04	842,679.17
400	497,244.49	842,695.16
446	497,281.55	842,598.80
519	497,211.09	842,546.63
521	496,904.73	842,143.51
522	496,886.49	842,095.99
523	496,907.12	842,045.32
524	497,017.50	841,988.24
526	496,942.53	841,858.32
527	496,858.44	841,902.50
528	496,803.90	841,840.71
529	496,710.54	841,916.52
530	496,684.58	841,969.19
531	496,191.23	842,009.00



TABULATIONS	
TOTALS	ACREAGE
R.O.W.	= 5.839
Total	= 5.839

APPROVED: FOR PUBLIC WATER AND PUBLIC SEWERAGE SYSTEMS, HOWARD COUNTY HEALTH DEPARTMENT.  
 COUNTY HEALTH OFFICER: *[Signature]* DATE: 5-31-72  
 APPROVED: HOWARD COUNTY OFFICE OF PLANNING AND ZONING.  
 DIRECTOR: *[Signature]* DATE: 5-31-72  
 APPROVED: FOR PUBLIC WATER AND PUBLIC SEWERAGE, STORM DRAINAGE SYSTEMS AND PUBLIC SEWERS, HOWARD COUNTY DEPARTMENT OF PUBLIC WORKS.  
 DIRECTOR: *[Signature]* DATE: 5/30/72

**SURVEYOR'S, ENGINEER'S and OWNER'S CERTIFICATES**

The undersigned, owner of the property shown on this Plat, grants unto, (1) Howard County, Maryland, its successors and assigns, the right to lay, construct and maintain water and sewer mains and laterals therefor in and under all road and street rights-of-way as shown hereon; (2) further it adopts this plan of subdivision and reserves the fee simple title to the beds of the streets and/or roads hereon, except however, for one dollar consideration, it herewith grants the right and option to Howard County, Maryland to acquire (within a period of five years commencing with the date of recording of this plat among the Land Records of Howard County) the fee simple title to the beds of the streets and/or roads shown hereon, together with such adjacent land, if any, as may be shown on this plat as areas designated for the installation of street lighting facilities; (3) further it grants unto Howard County, Maryland the right to enter upon, maintain and construct storm drain facilities contained in the perpetual drainage easements shown hereon.

The undersigned certify that the subdivision plan shown hereon is correct as complying with the requirements of Final Development Plan Phase 114 recorded in Plat Book 20 Folios 137 to 140, each inclusive, with all Open Space shown thereon to be used for drainage easements, if necessary, and the requirements of Article 17, Section 60 of the annotated code of Maryland concerning the making of this Plat and setting of markers have been complied with. The land shown hereon is a part of the land which by deed dated December 13, 1966 and recorded among the Land Records of Howard County, Maryland in Liber 463 Folio 196, was granted and conveyed by C. Aileen Ames to The Howard Research and Development Corporation.

PROFESSIONAL LAND SURVEYOR (By) *[Signature]* GREEN ASSOCIATES, INC. BALTIMORE, MARYLAND 21201  
 PROFESSIONAL ENGINEER (By) *[Signature]* GREEN ASSOCIATES, INC. BALTIMORE, MARYLAND 21201  
 OWNER (By) *[Signature]* THE HOWARD RESEARCH AND DEVELOPMENT CORP. AUTH. AGENT COLUMBIA, MARYLAND 21043

RECORDED IN PLAT BOOK 23 FOLIO 22  
 on MAY 31, 1972 among The Land Records of Howard County, Maryland.

**COLUMBIA  
 BROKEN LAND PARKWAY**

STEVEN'S FOREST ROAD  
 TO A POINT 4839' FEET ± SOUTH

Sheet 3 of 5  
 G TH Election District of Howard County, Md.  
 Scale: 1" = 100' Date: NOV 1971