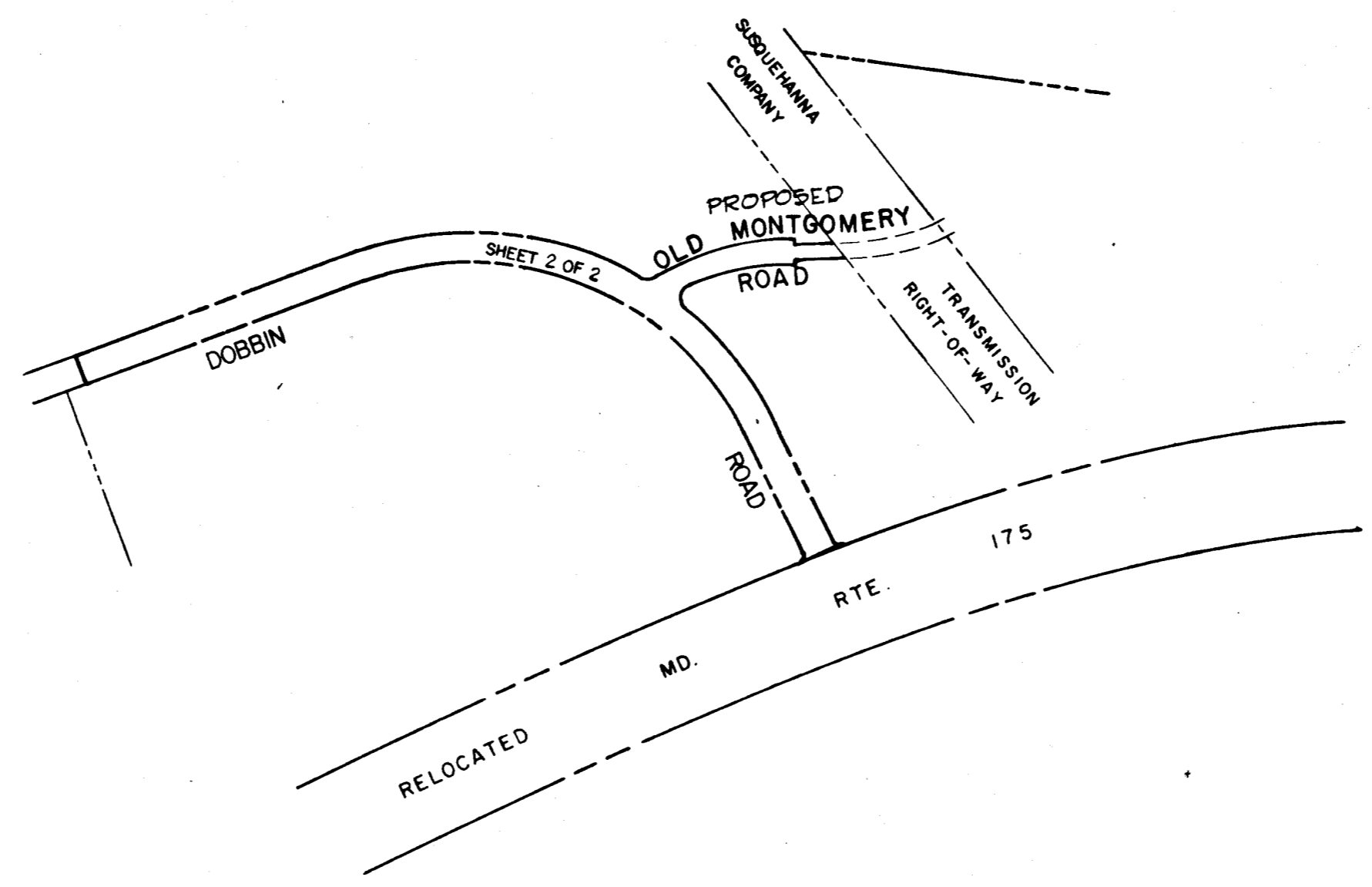


VICINITY MAP
SCALE - 1" = 2000'



RECEIVED
JUN 26 1973
BUREAU OF ENGINEERING

DOBBIN ROAD AND
RELOCATED OLD MONTGOMERY
ROAD

PETITIONER AND OWNER
THE HOWARD RESEARCH AND DEVELOPMENT CORPORATION
COLUMBIA, MARYLAND 21043

RECEIVED
JUN 22 1973
DIVISION OF LAND
DEVELOPMENT
OF HOWARD COUNTY

PLAT BOOK 20 227
MAY 18 1973

COLUMBIA

FINAL DEVELOPMENT PLAN PHASE 134
6TH ELECTION DISTRICT HOWARD COUNTY, MD.
SCALE 1" = 400' OCT. 31, 1972 SHEET 1 OF 2

PREPARED AS TO SHEETS 1 TO 2
IN ACCORDANCE WITH THE ZONING REGULATIONS
OF HOWARD COUNTY
ADOPTED MAY 16, 1961 AND AS
AMENDED MAY 27, 1965

George Chagotas 29
PROPERTY SURVEYOR

BOARD OF COUNTY COMM. B.C.C. CASE 412
RESOLUTION APPROVED AUGUST 10, 1965
AMENDED B.C.C. CASE 507 RESOLUTION APPROVED: 11-4-68
AMENDED B.C.C. CASE 606 RESOLUTION APPROVED: 11-22-72

HOWARD COUNTY PLANNING BOARD
Thomas J. Harris 5-18-73
H.C.P.B. EXEC. SECRETARY DATE H.C.P.B. CHAIRMAN DATE

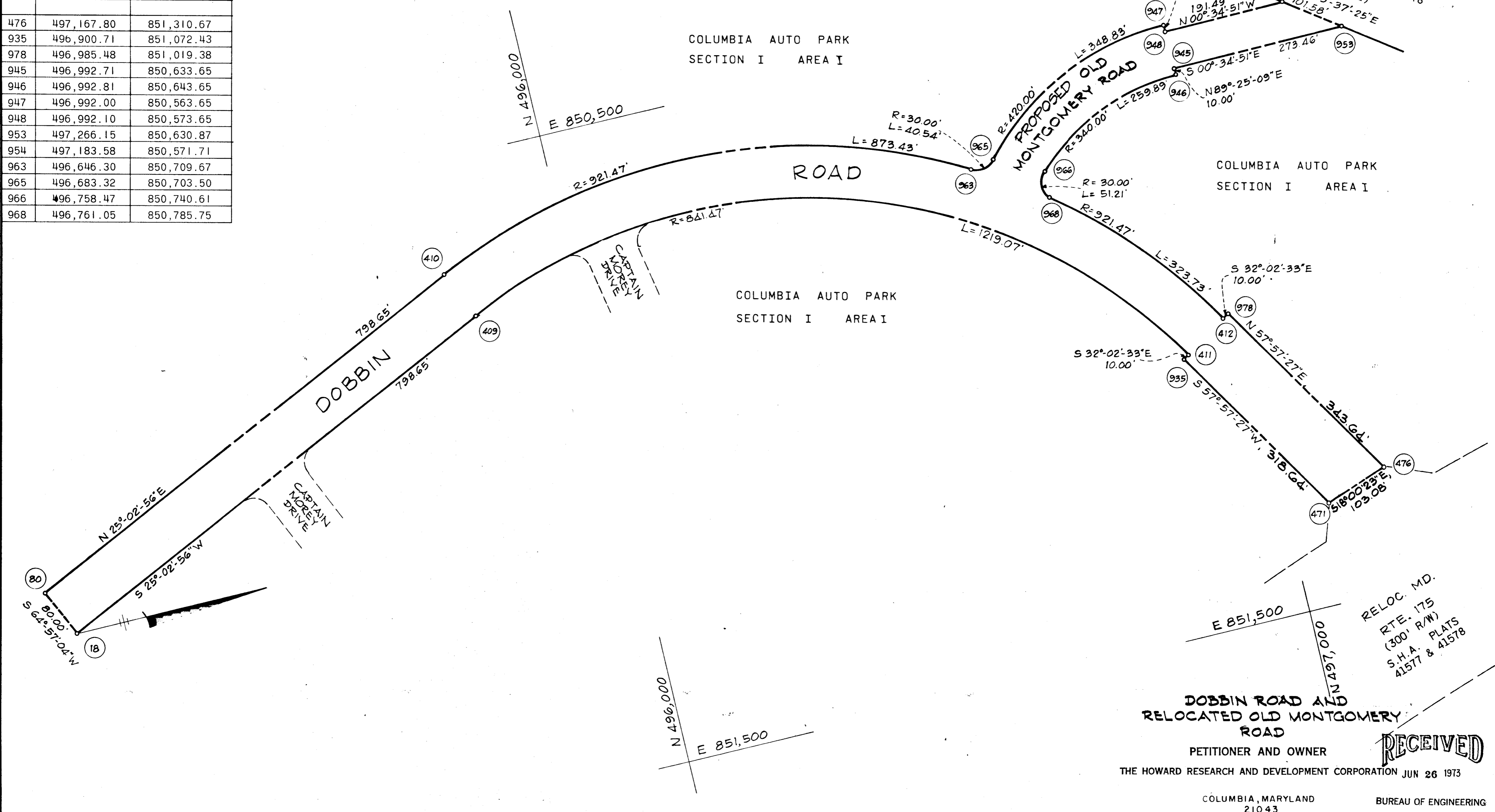
COORDINATES		
NO.	NORTH	EAST
18	495,116.11	851,089.38
80	495,082.24	851,016.90
409	495,839.64	850,751.24
410	495,805.77	850,678.76
411	496,909.19	851,067.13
412	496,977.00	851,024.68
471	497,069.77	851,342.53
476	497,167.80	851,310.67
935	496,900.71	851,072.43
978	496,985.48	851,019.38
945	496,992.71	850,633.65
946	496,992.81	850,643.65
947	496,992.00	850,563.65
948	496,992.10	850,573.65
953	497,266.15	850,630.87
954	497,183.58	850,571.71
963	496,646.30	850,709.67
965	496,683.32	850,703.50
966	496,758.47	850,740.61
968	496,761.05	850,785.75

RIGHT - OF - WAY AREAS

ALL OF THE LAND WITHIN THIS FINAL DEVELOPMENT PLAN PHASE SHALL BE USED AS THE RIGHT-OF-WAY FOR A PORTION OF DOBBIN ROAD AND OLD MONTGOMERY ROAD & MAY BE USED FOR ROADWAY AND UTILITY EASEMENT PURPOSES. FOR THE PURPOSE OF LAND USE ALLOCATIONS UNDER THE PROVISIONS OF SECTION 17 018 OF THE HOWARD COUNTY ZONING REGULATIONS, SUCH LAND SHALL BE CLASSIFIED AS INDUSTRIAL USE, AS INDICATED ON THE MAPS CONTAINED IN THIS FINAL DEVELOPMENT PLAN PHASE.

TABULATION OF LAND USE

LAND USE	ACRES
EMPLOYMENT CENTER INDUSTRIAL	5.513
TOTAL	5.513



RELOC. MD. RTE. 175 (300' R/W) S.H.A. PLATS A1577 & A1578

DOBBIN ROAD AND RELOCATED OLD MONTGOMERY ROAD

PETITIONER AND OWNER

THE HOWARD RESEARCH AND DEVELOPMENT CORPORATION JUN 26 1973

RECEIVED

COLUMBIA, MARYLAND 21043 BUREAU OF ENGINEERING

COLUMBIA

FINAL DEVELOPMENT PLAN PHASE 134
 6TH ELECTION DISTRICT HOWARD COUNTY, MD.
 SCALE 1"=100' MARCH 9, 1973 SHEET 2 OF 2

20 228
 MAY 18 73

DRWN. BY:
 CHKD. BY: