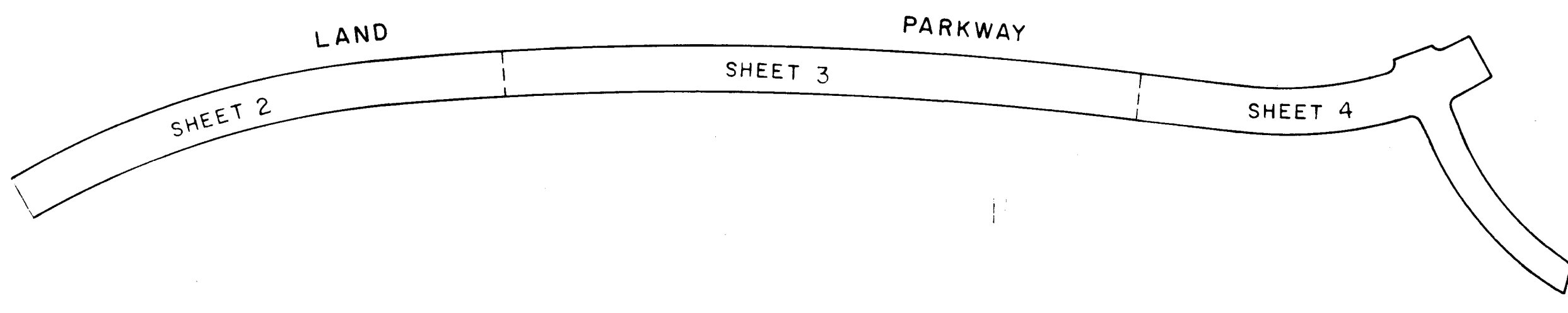


VICINITY MAP
SCALE: 3/4" = 1 MILE



RECEIVED
JUL 03 1972
BUREAU OF ENGINEERING
INSPECTION SECTION

BROKEN LAND PARKWAY

PETITIONER AND OWNER
THE HOWARD RESEARCH AND DEVELOPMENT CORPORATION
COLUMBIA, MARYLAND 21043

COLUMBIA

FINAL DEVELOPMENT PLAN PHASE 114
6TH ELECTION DISTRICT HOWARD COUNTY, MD.
SCALE 1" = 400' AUGUST, 1971 SHEET 1 OF 4

PREPARED AS TO SHEETS 1 TO 4
IN ACCORDANCE WITH THE ZONING REGULATIONS
OF HOWARD COUNTY
ADOPTED MAY 16, 1961 AND AS
AMENDED MAY 27, 1965

Robert Kanda
LAND SURVEYOR'S SIGNATURE

BOARD OF COUNTY COMM. B. C. C. CASE 412
RESOLUTION APPROVED AUGUST 10, 1965

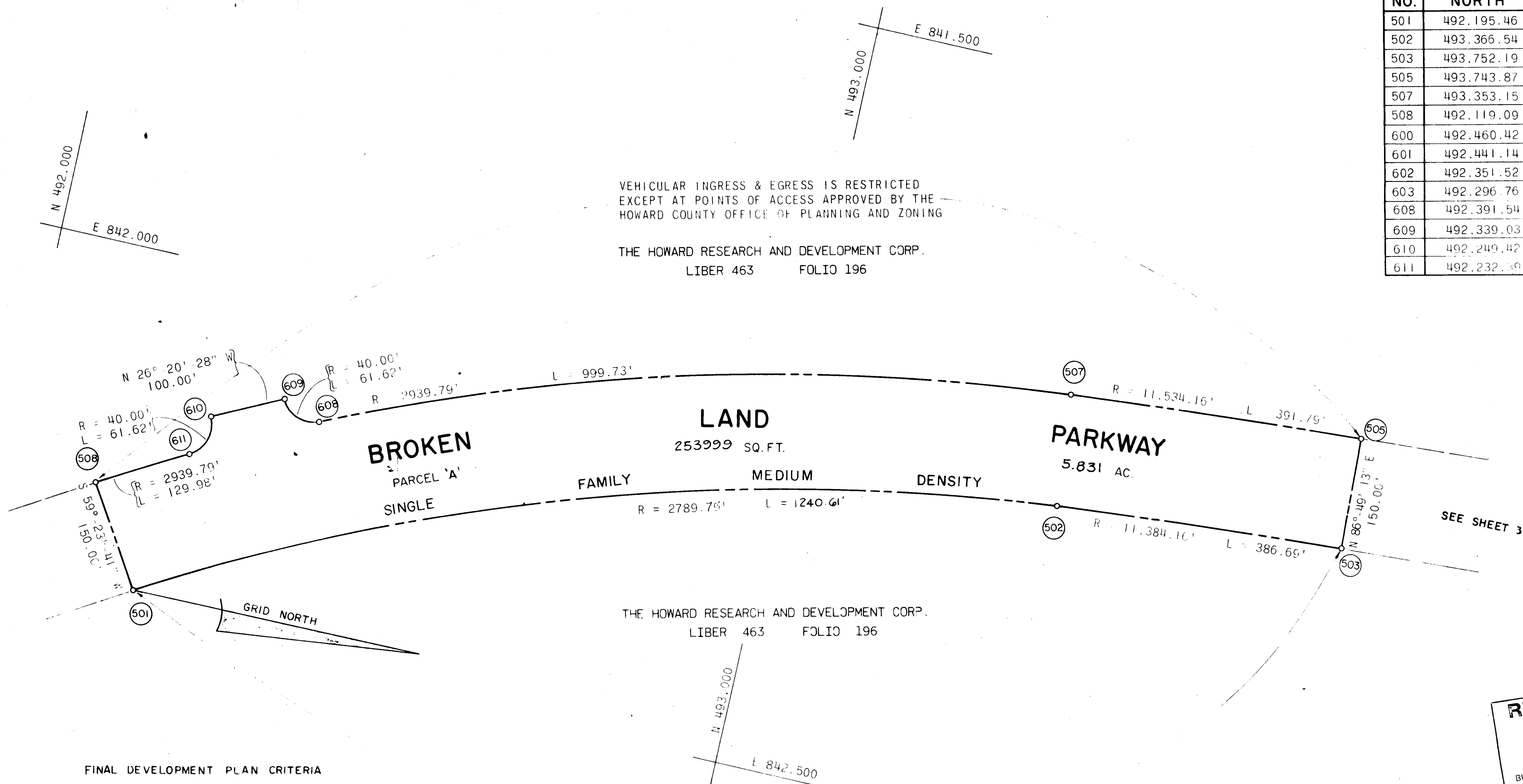
HOWARD COUNTY PLANNING BOARD

H. C. P. B. EXECUTIVE SEC. DATE H. C. P. B. CHAIRMAN DATE

PLAT BOOK 20 737
5-26-72
HOWARD COUNTY

S.P.
65

COORDINATES		
NO.	NORTH	EAST
501	492.195.46	842.444.66
502	493.366.54	842.067.19
503	493.752.19	842.039.19
505	493.743.87	841.889.42
507	493.353.15	841.917.79
508	492.119.09	842.315.56
600	492.460.42	842.306.53
601	492.441.14	842.360.68
602	492.351.52	842.405.05
603	492.296.76	842.387.56
608	492.391.54	842.172.08
609	492.339.03	842.154.46
610	492.249.42	842.198.83
611	492.232.39	842.251.88



VEHICULAR INGRESS & EGRESS IS RESTRICTED EXCEPT AT POINTS OF ACCESS APPROVED BY THE HOWARD COUNTY OFFICE OF PLANNING AND ZONING

THE HOWARD RESEARCH AND DEVELOPMENT CORP.
LIBER 463 FOLIO 196

THE HOWARD RESEARCH AND DEVELOPMENT CORP.
LIBER 463 FOLIO 196

VEHICULAR INGRESS & EGRESS IS RESTRICTED EXCEPT AT POINTS OF ACCESS APPROVED BY THE HOWARD COUNTY OFFICE OF PLANNING AND ZONING

RECEIVED
JUL 03 1972
BUREAU OF ENGINEERING
INSPECTION SECTION

FINAL DEVELOPMENT PLAN CRITERIA

The area included in this Final Development Plan Phase is applicable to Section I, Areal, of Broken Land Parkway

All of the land within this Final Development Plan Phase shall be used as the right of way for a portion of Broken Land Parkway, Snowden River Parkway, and Steven's Forest Road and may be used for roadway and utility easement purposes. For the purpose of land use allocations under the provisions of Section 17.01B of the Howard County Zoning Regulations, such land shall be classified as Single Family Medium Density use, as indicated on the maps contained in this Final Development Plan Phase.

Vehicular ingress and egress to Broken Land Parkway and Snowden River Parkway will be permitted only at points of access approved by the Howard County Planning Board.

TABULATION OF LAND USE IN ACRES

Land Use	Acres
S. F. M. D. Roadway	18.892
Total	18.892

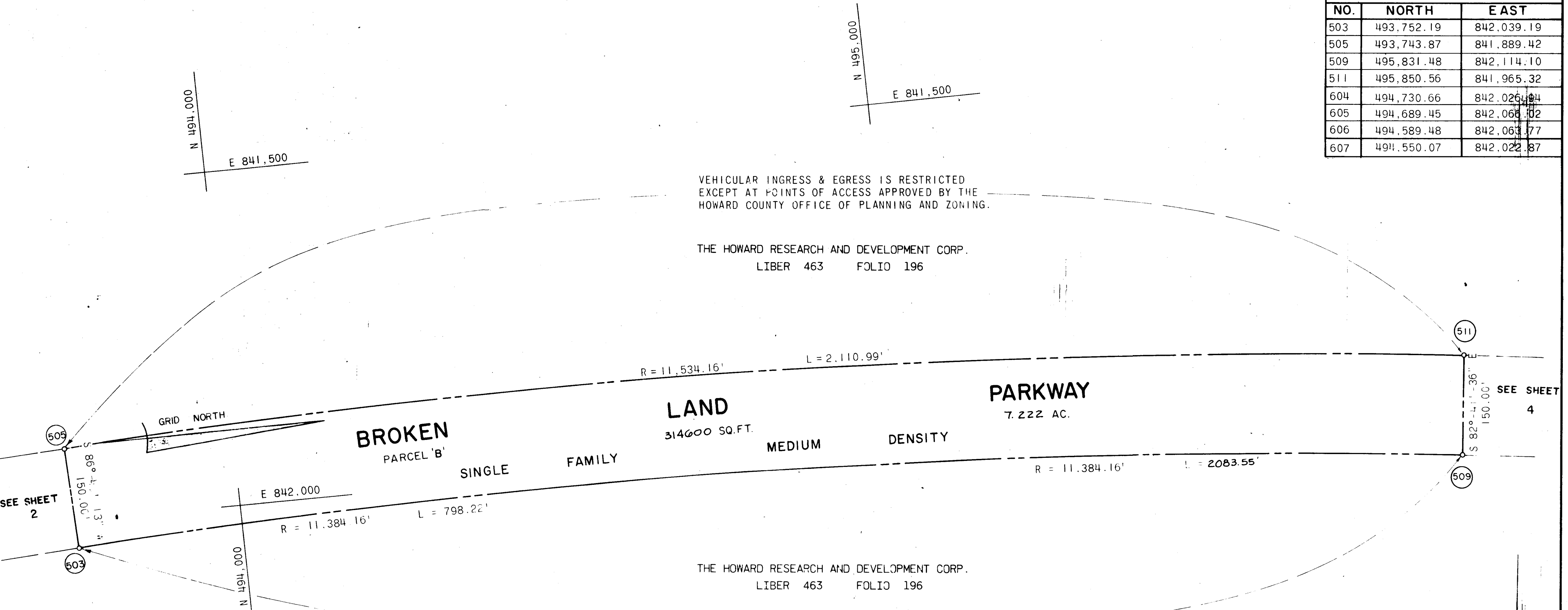
BROKEN LAND PARKWAY

PETITIONER AND OWNER
THE HOWARD RESEARCH AND DEVELOPMENT CORPORATION
COLUMBIA, MARYLAND 21043

COLUMBIA

FINAL DEVELOPMENT PLAN PHASE 114
6TH ELECTION DISTRICT HOWARD COUNTY, MD.
SCALE 1"=100' AUGUST, 1971 SHEET 2 OF 4

COORDINATES		
NO.	NORTH	EAST
503	493,752.19	842,039.19
505	493,743.87	841,889.42
509	495,831.48	842,114.10
511	495,850.56	841,965.32
604	494,730.66	842,026.94
605	494,689.45	842,063.02
606	494,589.48	842,063.77
607	494,550.07	842,022.87



VEHICULAR INGRESS & EGRESS IS RESTRICTED EXCEPT AT POINTS OF ACCESS APPROVED BY THE HOWARD COUNTY OFFICE OF PLANNING AND ZONING.

THE HOWARD RESEARCH AND DEVELOPMENT CORP.
LIBER 463 FOLIO 196

THE HOWARD RESEARCH AND DEVELOPMENT CORP.
LIBER 463 FOLIO 196

VEHICULAR INGRESS & EGRESS IS RESTRICTED EXCEPT AT POINTS OF ACCESS APPROVED BY THE HOWARD COUNTY OFFICE OF PLANNING AND ZONING.

BROKEN LAND PARKWAY
7.222 AC.
LAND
314600 SQ.FT.
SINGLE FAMILY MEDIUM DENSITY

RECEIVED
JUL 03 1972
BUREAU OF ENGINEERING
INSPECTION SECTION

BROKEN LAND PARKWAY

PETITIONER AND OWNER
THE HOWARD RESEARCH AND DEVELOPMENT CORPORATION
COLUMBIA, MARYLAND 21043

COLUMBIA

P B 20 F 139
5-26 72

FINAL DEVELOPMENT PLAN PHASE 114
6TH ELECTION DISTRICT HOWARD COUNTY, MD.
SCALE 1"=100' AUGUST, 1971 SHEET 3 OF 4

