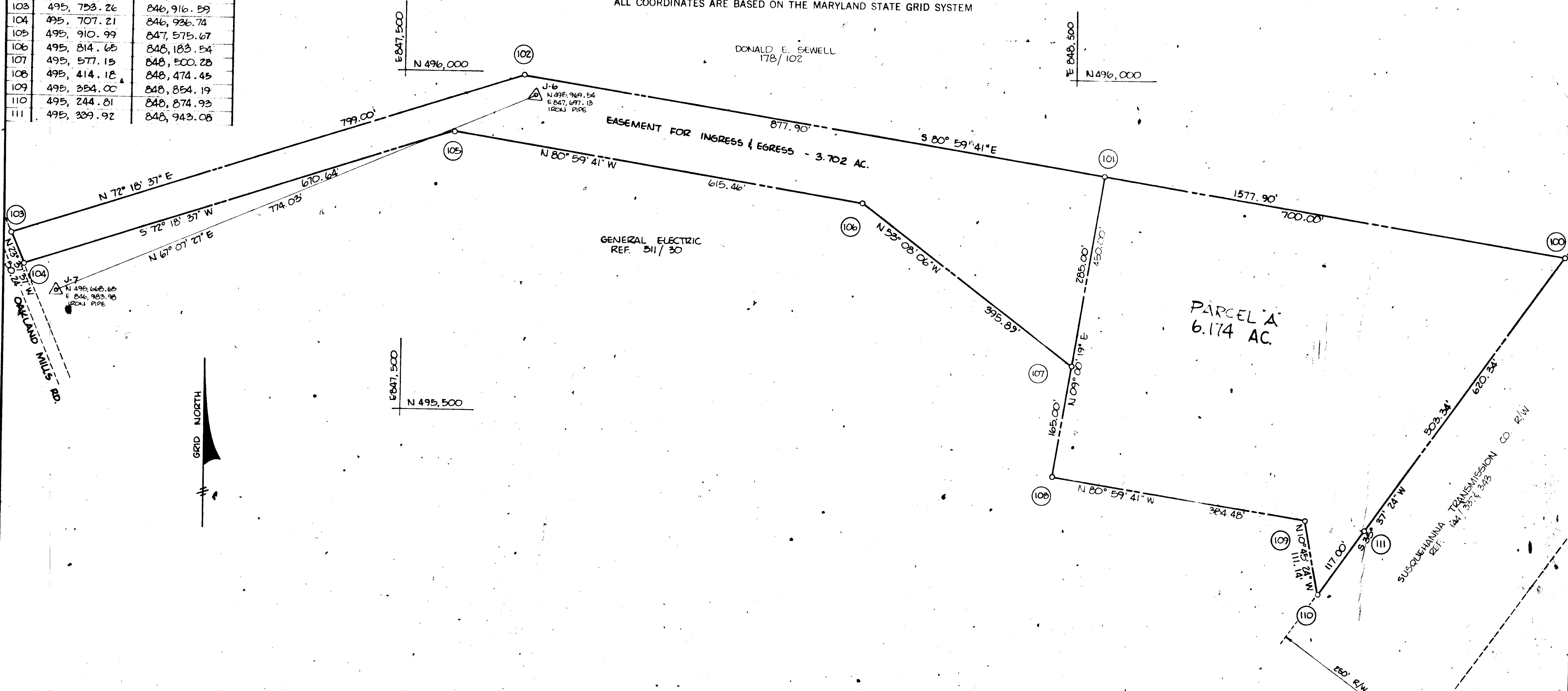


COORDINATES		
NO.	NORTH	EAST
100	495, 749.06	849, 236.25
101	495, 858.64	848, 544.89
102	495, 996.05	847, 677.81
103	495, 753.26	846, 916.59
104	495, 707.21	846, 936.74
105	495, 910.99	847, 575.67
106	495, 814.65	848, 183.54
107	495, 577.15	848, 500.28
108	495, 414.18	848, 474.45
109	495, 354.00	848, 854.19
110	495, 244.81	848, 874.93
111	495, 389.92	848, 943.08

COLUMBIA

ALL COORDINATES ARE BASED ON THE MARYLAND STATE GRID SYSTEM

DONALD E. SEWELL
178/102



PARCEL A
6.174 AC.

TABULATIONS

TOTALS	ACREAGE
All lots	= 6.174
R. O. W. - EASEMENT FOR INGRESS & EGRESS	= 3.702
Open Space	=
Total	= 9.876
Lots this plat (incl. open space)	= 1

RECEIVED
JUN 12 1970
BUREAU OF ENGINEERING

RECEIVED
JUN 11 1970
DIVISION OF LAND DEVELOPMENT
HOWARD COUNTY

APPROVED: FOR PUBLIC WATER AND PUBLIC SEWERAGE SYSTEMS, HOWARD COUNTY HEALTH DEPARTMENT.

George R. Brown 5-28-70
COUNTY HEALTH OFFICER DATE

APPROVED: HOWARD COUNTY OFFICE OF PLANNING AND ZONING.

Thomas L. Harris 5-28-70
DIRECTOR DATE

APPROVED: FOR PUBLIC WATER AND PUBLIC SEWERAGE, STORM DRAINAGE SYSTEMS AND PUBLIC ROADS, HOWARD COUNTY DEPARTMENT OF PUBLIC WORKS.

Herman S. O'Neill 5-28-70
DIRECTOR DATE

SURVEYOR'S, ENGINEER'S and OWNER'S CERTIFICATES

The undersigned, owner of the property shown on this Plat, grants unto, (1) Howard County, Maryland, its successors and assigns, the right to lay, construct and maintain water and sewer mains and laterals therefor in and under all road and street rights-of-way as shown hereon; (2) further it adopts this plan of subdivision and reserves the fee simple title to the beds of the streets and/or roads hereon, except however, for one dollar consideration, it herewith grants the right and option to Howard County, Maryland to acquire (within a period of five years commencing with the date of recording of this plat among the Land Records of Howard County) the fee simple title to the beds of the streets and/or roads shown hereon, together with such adjacent land, if any, as may be shown on this plat as areas designated for the installation of street lighting facilities, reserving, however, unto Grantor, its successors and assigns the right in perpetuity to lay, construct, enlarge, maintain and use cables and/or conduits for electrical transmission and other purposes beneath the surface of the lands subject to the rights granted herein to said Howard County. The undersigned certifies that the subdivision plan shown hereon is correct as complying with the requirements of Final Development Plan Phase 91 recorded in Plat Book 19 Folios 49 to 101, each inclusive, with all Open Space shown thereon to be used for drainage easements, if necessary, and the requirements of Article 17, Section 60 of the annotated code of Maryland concerning the making of this Plat and setting of markers have been complied with. The land shown hereon is a part of the land which by deed dated JUNE 4, 1969 and recorded among the Land Records of Howard County, Maryland in Liber 511 Folio 30, was granted and conveyed by THE HOWARD RESEARCH & DEVELOPMENT CORP. TO THE GENERAL ELECTRIC CO.

PROFESSIONAL LAND SURVEYOR
(By) *Robert J. Atkins* 5467
Reg. No. *Richard P. Brown Assoc.*
COLUMBIA MARYLAND

PROFESSIONAL ENGINEER
(By) *George Lambert* #6519
Reg. No. *George Lambert*
9052 OAKLAND BLDG.
COLUMBIA, MD 21043

OWNER
(By) *John A. Bruce*
Auth. Agent
SITING M&R
26 APPLIANCE PARK EAST
COLUMBIA, MD

RECORDED IN PLAT BOOK 16, FOLIO 74
on MAY 28, 1970 among The
Land Records of Howard County, Maryland.

**COLUMBIA
BALTO. GAS & ELECTRIC
SUB STATION
OAKLAND MILLS ROAD**

Sheet 1 of 1
6th Election District of Howard County, Md.
Scale: 1" = 100' Date: MARCH, 1970