

COLUMBIA

ALL COORDINATES ARE BASED ON THE MARYLAND STATE GRID SYSTEM

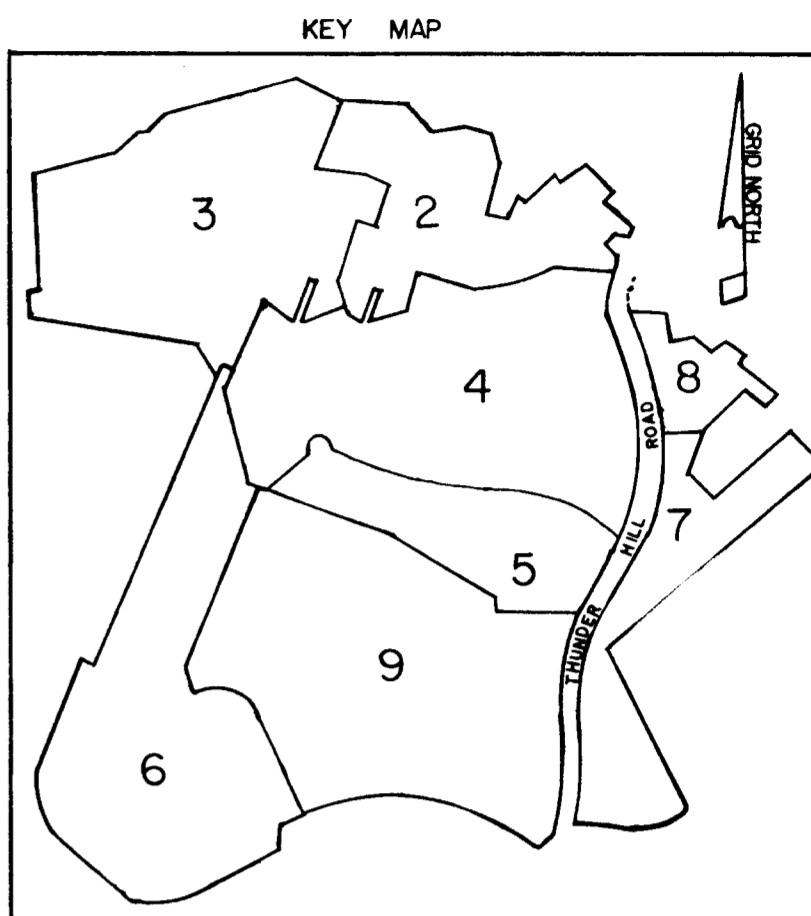
NO	NORTH	EAST
17	504 472.78	845 031.56
18	504 438.13	845 039.96
23	504 552.42	845 037.74
24	504 559.16	845 093.01
64	504 296.66	845 015.69
73	504 307.62	844 259.18
75	504 228.13	844 240.56
76	504 280.06	844 078.48
80	504 207.42	843 900.24
81	504 279.77	844 058.38
82	504 147.37	844 045.44
103	504 749.64	844 838.64
104	504 762.22	845 072.71
155	504 712.99	844 624.35
156	504 674.75	844 658.56
157	504 762.76	844 756.12
159	505 180.00	844 085.49
166	504 930.44	844 592.71
174	504 783.56	844 805.60
79	504 132.68	844 065.48
189	505 180.00	844 349.60
190	504 882.50	844 975.02
191	504 217.86	844 663.54
192	504 307.59	844 762.67
264	504 347.14	844 021.17
265	504 533.35	844 094.15
266	504 565.74	844 079.99
267	504 394.73	844 093.53
268	504 366.70	844 100.44
274	504 515.99	844 141.05
275	504 530.48	844 172.55
276	504 489.37	844 317.16
277	504 538.19	844 328.00
278	504 499.12	844 503.97
279	504 450.31	844 493.14
280	504 503.15	844 692.89
281	504 540.22	844 659.34
282	504 673.62	844 806.71
283	504 709.60	844 807.84
284	504 639.01	844 842.98
285	504 637.92	844 877.67
288	504 687.50	844 194.33
289	504 612.76	844 167.83
290	504 597.84	844 135.14
291	504 670.79	844 241.46
292	504 596.09	844 214.97
293	504 563.84	844 231.15
295	504 862.59	844 400.52
296	504 800.74	844 339.91
297	504 788.56	844 366.08
298	504 788.28	844 271.44
299	504 760.53	844 251.12
301	504 991.18	844 034.41
304	504 908.32	844 051.14
305	504 911.35	844 087.17
307	504 818.24	844 179.73
307	504 818.22	844 144.98
308	504 845.17	844 219.32
349	504 772.93	844 216.37
354	504 510.56	844 994.76

NO	NORTH	EAST
357	504 637.25	845 148.04
358	504 748.67	844 769.78
367	504 726.96	844 083.05
368	504 748.85	844 077.77
474	504 206.92	843 150.24
475	504 205.71	843 170.61
476	504 162.57	843 127.15
477	504 146.57	843 139.83
478	504 287.52	842 996.40
479	504 243.17	842 972.32
481	504 406.73	842 896.41
482	504 392.18	842 848.57
483	504 427.12	842 837.94
484	504 441.67	842 885.78
485	504 593.84	842 958.28
486	504 640.15	842 939.44
487	504 654.65	842 975.08
488	504 608.33	842 993.82
489	504 476.42	843 259.02
491	504 634.47	843 265.54
492	504 660.48	843 239.78
493	504 658.19	843 341.57
494	504 634.24	843 315.57
495	504 545.03	843 311.91
496	504 520.79	843 327.59
498	504 874.04	843 325.41
499	504 734.16	843 319.67
500	504 708.15	843 343.62
501	504 805.44	843 272.55
502	504 829.67	843 256.87
503	504 734.62	843 269.65
504	504 710.65	843 245.23
505	504 688.21	843 829.47
506	504 575.19	843 800.91
507	504 639.86	843 788.38
508	504 609.24	843 811.71
509	504 557.34	843 847.22
510	504 610.76	843 863.07
511	504 630.85	843 892.30
512	504 607.61	843 973.17
513	504 654.16	843 991.41
518	504 506.45	842 668.13
519	504 235.41	842 544.97
524	504 015.45	842 480.35
528	504 642.26	842 701.18
529	504 582.80	842 678.34
542	503 852.97	843 274.94
550	503 761.28	843 301.58
552	503 957.88	843 419.45
553	503 874.76	843 384.67
554	503 748.48	843 332.04
557	505 357.27	843 725.63
572	505 244.89	843 953.76
573	505 096.23	843 988.98
594	504 567.57	842 670.27
721	504 501.52	843 770.92
722	504 487.41	843 756.18
723	504 482.67	843 817.24
724	504 462.27	843 817.93
727	504 370.70	843 589.88

NO	NORTH	EAST
731	504 286.64	843 699.64
732	504 398.72	843 745.27
733	504 279.10	843 718.17
734	504 391.18	843 763.79
739	504 367.42	843 900.24
745	504 805.77	843 769.48
747	504 799.30	843 927.69
750	504 632.72	844 046.12
752	504 646.96	844 009.79
815	503 916.06	845 108.79
821	503 449.64	844 704.60
823	503 463.88	844 562.40
825	503 992.41	844 782.52
827	503 969.82	844 866.13
829	503 946.06	844 849.74
829	504 033.31	845 039.14
830	504 018.46	845 071.22
831	504 060.67	845 023.07
832	504 111.22	845 038.43
843	504 481.44	844 446.70
846	503 557.67	844 073.72
847	503 532.64	844 961.89
848	503 512.62	844 294.16
849	503 541.12	844 218.67
851	503 572.13	844 225.68
854	503 501.16	844 227.53
855	503 551.15	844 276.52
857	503 746.46	844 228.80
868	503 74.32	844 189.81
861	504 076.46	845 049.93
863	503 766.18	844 223.31
864	503 386.82	844 900.05
865	503 724.12	844 171.59
869	503 631.95	843 880.86
875	503 644.22	843 860.11
880	503 660.87	843 848.31
889	503 621.86	843 758.74
935	503 424.93	843 495.93
1022	503 346.84	843 603.42
1029	503 303.51	845 040.07
1030	503 313.88	845 075.10
1034	503 394.10	843 624.13
1225	503 399.89	844 699.62
1229	503 337.66	844 667.87
1230	503 377.50	844 672.26
1233	503 338.64	844 618.12
1235	502 969.09	844 874.45
1236	503 382.48	844 622.50
1237	503 409.85	844 600.12
1238	503 208.24	844 684.56
1239	503 200.02	844 687.70
1240	503 185.58	844 702.13
1241	503 190.42	844 637.85
1242	503 182.20	844 640.98
1244	503 432.46	844 436.69
1245	503 508.68	844 063.71
1261	503 342.72	844 874.71
1271	503 588.91	843 855.42
1274	502 904.64	844 840.71

NO	NORTH	EAST
1276	503 601.17	843 834.88
1278	503 603.48	843 814.39
1284	503 161.82	844 639.84
1424	503 267.64	844 083.54
1425	502 991.13	844 514.25
1426	502 948.04	844 514.25
1427	502 948.04	844 763.15
1431	503 259.54	845 016.20
1432	503 225.32	845 025.08
1433	503 268.42	845 050.42
1606	502 058.18	843 323.98
1607	501 923.07	843 017.31
1608	501 935.74	842 964.29
1609	502 007.44	842 901.09
1610	501 946.20	842 849.14
1624	502 111.26	842 671.15
1625	502 156.88	842 710.25
1634	502 466.02	843 591.94
1635	502 214.18	843 673.93
1636	502 163.76	843 648.28
1637	502 484.59	843 648.99
1638	502 232.75	843 730.98
1639	502 207.10	843 781.40
1640	502 688.44	843 324.14
1641	502 689.48	843 184.87
1642	502 610.03	843 192.96
1643	502 628.99	843 332.23
1644	502 688.28	843 089.46
1645	502 339.76	842 624.26
1646	502 796.70	842 845.54
1647	502 631.46	843 042.92
1648	502 313.22	842 678.08
1649	502 671.50	842 854.72
1650	502 694.24	842 921.67
1654	502 777.16	842 889.16
1726	502 674.88	843 224.50
1727	502 776.22	843 210.71
2014	502 834.74	845 004.27
2018	502 109.90	845 018.61
2019	502 137.38	844 883.59
2020	502 164.83	844 863.75
2021	502 051.11	845 006.66
2022	502 078.68	844 871.63
2023	502 061.00	844 842.64
2029	502 273.26	844 867.49
2034	502 928.54	844 943.42
2037	503 127.88	845 119.39
2040	503 534.81	845 330.03
2041	503 244.19	845 475.83
2044	503 433.63	845 450.38
2089	503 617.90	845 906.23
2091	503 750.97	845 776.59
2093	503 328.31	845 496.44
2094	503 325.44	845 467.72
2097	503 653.03	845 830.11
2098	503 616.71	845 828.60
2106	503 631.76	845 347.52
2119	502 080.26	845 245.52
2120	502 125.71	845 341.17

NO	NORTH	EAST
2130	503 786.56	845 224.84
2131	503 705.09	845 384.33
2409	504 081.88	845 133.16
2421	503 943.61	845 183.89
2481	503 860.24	845 234.16
2482	503 830.92	845 216.53
2483	503 917.97	845 217.84
2484	503 933.71	845 187.46
2497	504 088.79	845 268.63
2499	504 180.24	845 108.21
2500	504 199.75	845 241.80
2544	503 883.96	845 318.07
2545	503 941.70	845 301.74
2547	503 955.75	845 452.87
2548	504 001.52	845 414.08
2549	503 926.11	845 605.99
2551	503 977.28	845 514.26
2553	503 978.90	845 480.19
2558	503 847.15	845 678.26
2562	503 870.39	845 702.14
2563	504 013.68	845 562.56
2564	504 050.20	845 564.30
2565	504 025.97	845 525.51
2568	504 043.58	845 463.70
2569	504 129.53	845 379.96
2802	502 025.77	844 745.64
2803	502 006.77	844 687.97
2804	502 129.99	844 484.06
2805	502 209.77	843 789.61
2830	502 269.29	844 787.59
2831	502 557.38	844 773.29
1224	503 411.22	844 557.42
2032	502 516.34	844 853.19
934	503 714.52	843 317.77
2933	503 395.88	843 483.59
58	504 738.29	845 027.62
742	504 267.42	843 900.24
8	504 578.11	844 935.93
60	504 595.64	844 988.66
2117	502 134.45	845 219.77



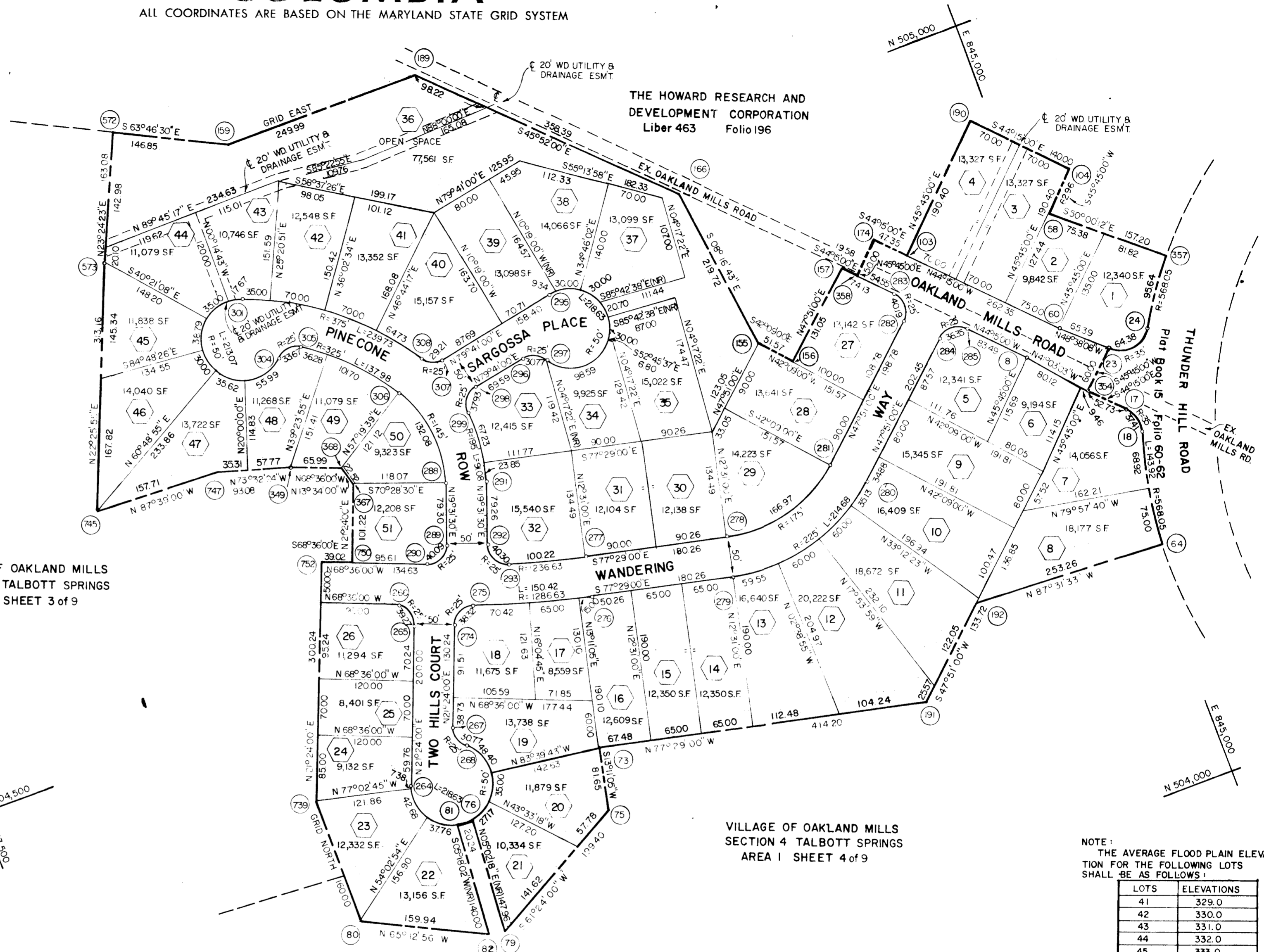
- S.F.M.D.
- OPEN SPACE
- APTS
- S.F.A.

RECEIVED
MAR 19 196

COLUMBIA

ALL COORDINATES ARE BASED ON THE MARYLAND STATE GRID SYSTEM

CURVE			DATA			
NOS.	RAD	Δ°	ARC	TAN	CH	L.C.B.
357-44	568.05	09°38'48"	95.64	47.93	95.53	S 35° 10' 24" W
24-23	35.00	105°24'00"	64.38	45.94	55.68	S 83° 03' 00" W
283-282	25.00	92°06'00"	40.19	25.93	36.00	S 01° 48' 00" W
281-278	175.00	54°40'00"	16.97	90.45	160.70	S 75° 11' 00" W
277-293	1236.63	04°38'36"	100.22	50.14	100.19	N 75° 09' 42" W
293-296	25.00	92°21'54"	40.30	26.05	36.08	N 26° 39' 27" W
291-299	19.500	26°45'45"	91.08	46.39	90.26	S 06° 08' 37" W
299-298	25.00	86°55'15"	37.93	23.69	34.39	N 36° 13' 22" W
296-297	25.00	70°31'44"	30.77	17.64	24.87	S 65° 33' 08" E
297-295	50.00	250°31'43"	0.64	0.64	0.64	S 31° 31' 52" W
307-308	25.00	66°56'41"	33.71	6.53	0.88	N 65° 50' 40" W
308-301	375.00	36°37'41"	232.73	124.12	115.67	S 51° 41' 10" E
301-304	50.00	244°09'31"	213.07	79.77	94.72	S 1° 06' 46" E
304-305	25.00	77°09'32"	33.67	9.94	31.18	N 84° 25' 20" E
305-306	3250.00	24°19'28"	1379.8	70.04	136.94	S 4° 05' 05" E
306-288	145.00	52°11'51"	132.09	71.03	127.98	S 36° 34' 26" E
289-290	25.00	91°52'30"	40.09	25.82	35.93	S 65° 27' 45" W
288-285	25.00	90°00'00"	39.27	25.00	35.36	S 23° 36' 00" E
284-288	5000.00	250°3'43"	218.67	0.00	91.65	S 76° 04' 09" W
8-76	5000.00	23°17'49"	20.34	0.6	20.10	S 29° 35' 45" W
68-267	25.00	70°31'44"	30.77	17.64	24.87	N 13° 51' 41" W
274-275	25.00	87°48'55"	28.33	4.06	24.68	N 3° 18' 28" E
275-276	1286.63	06°41'55"	50.44	73.30	50.34	S 74° 08' 02" E
273-280	225.00	74°00'00"	24.08	116.30	206.63	S 75° 11' 00" E
244-285	25.00	57°54'30"	18.35	24.10	31.30	S 80° 08' 41" E
7-18	30.00	51°14'27"	31.74	20.27	15.22	S 13° 37' 46" E
19-14	168.00	149°11'00"	143.22	74.33	143.22	S 11° 43' 55" W



VILLAGE OF OAKLAND MILLS
SECTION 4 TALBOTT SPRINGS
AREA I SHEET 3 of 9

VILLAGE OF OAKLAND MILLS
SECTION 4 TALBOTT SPRINGS
AREA I SHEET 4 of 9

NOTE:
THE AVERAGE FLOOD PLAIN ELEVATION FOR THE FOLLOWING LOTS SHALL BE AS FOLLOWS:

LOTS	ELEVATIONS
41	329.0
42	330.0
43	331.0
44	332.0
45	333.0

TOTALS

	ACREAGE
All lots	14.749
R.O.W. Arterial	
Local	2.906
Open Space	1.781
Total	19.436
Lots this plat (incl. open space)	51
Total Open Space lots	1

SURVEYOR'S, ENGINEER'S and OWNER'S CERTIFICATES

The undersigned, owner of the property shown on this Plat, grants unto, (1) the Howard County Metropolitan Commission, its successors and assigns, the right to lay, construct and maintain water and sewer mains and laterals therefor in and under all road and street rights-of-way as shown hereon; (2) further, it adopts this plan of subdivision and reserves the fee simple title to the beds of the streets and/or roads hereon, except however, for one dollar consideration, it herewith grants the right and option to the Board of County Commissioners of Howard County to acquire (within a period of five years commencing with the date of recording of this plat among the Land Records of Howard County) the fee simple title to the beds of the streets and/or roads shown hereon, together with such adjacent land, if any, as may be shown on this plat as areas designated for the installation of street lighting facilities, reserving, however, unto Grantor, its successors and assigns, the right in perpetuity to lay, construct, enlarge, maintain and use cables and/or conduits for electrical transmission and other purposes beneath the surface of the lands subject to the rights granted herein to said Board of County Commissioners. The undersigned certify that the subdivision plan shown hereon is correct as complying with the requirements of Final Development Plan Phase _____ recorded in Plat Book _____ folios _____ to _____, each inclusive, with all Open Space shown thereon to be used for drainage easements, if necessary, and the requirements of Article 17, Section 60 of the annotated code of Maryland concerning the making of this Plat and setting of markers have been complied with. The land shown hereon is a part of the land which by deed dated December 13, 1966 and recorded among the Land Records of Howard County, Maryland in Liber 463 folio 196 was granted and conveyed by C. Aileen Ames to the Howard Research and Development Corporation.

PROFESSIONAL LAND SURVEYOR
(By) Richard P. Browne 5467
RICHARD P. BROWNE ASSOCIATES Reg. No.
COLUMBIA, MARYLAND

PROFESSIONAL ENGINEER
(By) Richard P. Browne 5238
RICHARD P. BROWNE ASSOCIATES Reg. No.
COLUMBIA, MARYLAND

OWNER
(By) Howard Research and Development Corporation
THE HOWARD RESEARCH AND DEVELOPMENT CORPORATION Auth. Agent
VILLAGE OF CROSS KEYS, BALTIMORE, MARYLAND

APPROVED: FOR PUBLIC WATER & PUBLIC SEWERAGE SYSTEMS, HOWARD COUNTY HEALTH DEPT.

County Health Officer Date

APPROVED: HOWARD COUNTY PLANNING COMM.

Chairman Date

Director Date

APPROVED: HOWARD COUNTY ROADS DEPARTMENT

Roads Superintendent Date

APPROVED: HOWARD COUNTY METROPOLITAN COMM.

Chief Engineer Date

RECORDED IN PLAT BOOK 17 FOLIO 47
on _____, 19 _____ among The
Land Records of Howard County, Maryland.

COLUMBIA
VILLAGE OF OAKLAND MILLS
TALBOTT SPRINGS

SECTION 4
AREA 1
Sheet 2 of 9

6th Election District of Howard County, Md.
Scale: 1" = 100' Date: NOV 18, 1968

CURVE		DATA					
NOS.	RAD.	Δ	ARC.	TAN.	CH.	L.C.B.	
512-511	150.00	109°43'46"	84.27	42.26	84.15	N 73°57'53" W	
511-510	25.00	90°21'04"	39.42	25.15	35.46	S 65°29'42" W	
510-509	275.00	11°49'50"	56.78	28.49	56.68	S 6°14'03" W	
723-724	25.00	48°11'23"	21.03	11.18	20.41	S 61°05'42" E	
734-732	50.00	23°04'26"	20.14	10.21	20.00	N 67°00'57" W	
724-721	25.00	48°11'23"	21.03	11.18	20.41	N 46°04'42" E	
506-508	225.00	09°41'16"	35.75	17.91	35.72	N 7°35'42" E	
508-507	25.00	100°4'44"	43.94	30.16	39.50	N 77°08'08" E	
493-494	25.00	90°00'00"	39.27	25.00	35.36	S 47°21'00" E	
496-496	25.00	70°31'44"	30.77	17.68	28.87	N 32°54'53" W	
496-489	50.00	25°03'43"	21.863	—	81.65	S 8°05'07" W	
491-492	25.00	94°10'12"	41.09	26.89	36.62	N 4°44'00" W	
432-488	712.60	2°00'48"	252.54	27.66	251.32	S 78°01'24" W	
488-484	125.00	84°47'00"	184.97	14.11	168.55	S 25°28'31" W	
48-478	200.00	45°36'00"	153.12	84.04	154.95	S 33°42'30" E	
474-475	25.00	48°11'23"	21.03	11.18	20.41	S 46°05'44" E	

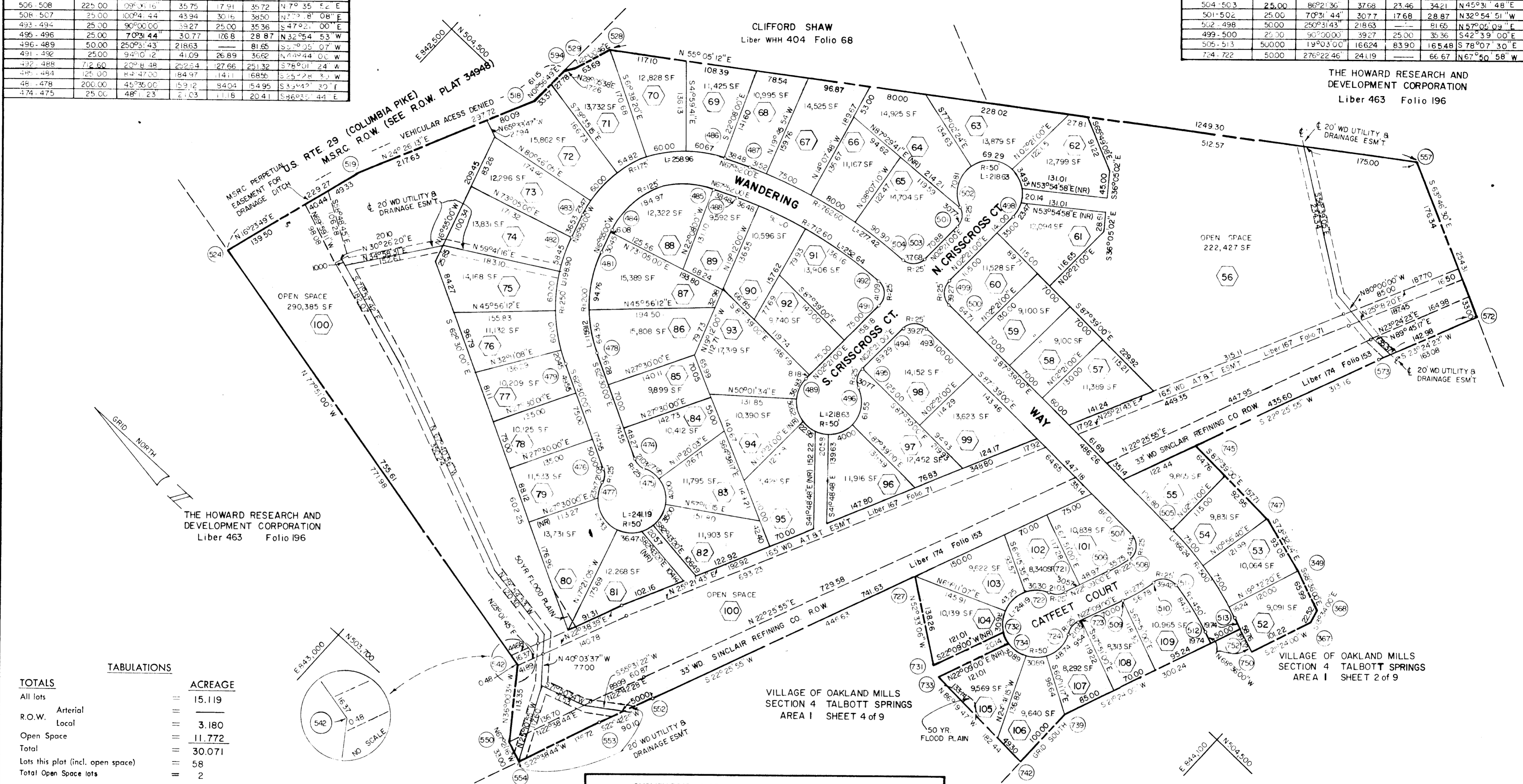
COLUMBIA

ALL COORDINATES ARE BASED ON THE MARYLAND STATE GRID SYSTEM

CURVE		DATA					
NOS.	RAD.	Δ	ARC.	TAN.	CH.	L.C.B.	
475-477	50.00	276°22'46"	241.19	—	66.67	S 27°29'57" W	
477-476	25.00	48°11'23"	21.03	11.18	20.41	N 38°24'18" W	
479-482	250.00	45°33'00"	198.90	105.05	193.69	N 39°42'30" W	
483-486	175.00	87°47'00"	258.96	59.75	235.97	N 25°28'30" E	
487-504	162.60	20°53'35"	277.42	140.26	275.87	N 78°17'18" E	
504-503	25.00	86°21'36"	37.68	23.46	34.21	N 45°31'48" E	
501-502	25.00	70°31'44"	30.77	17.68	28.87	N 32°54'51" W	
502-498	50.00	25°03'43"	21.863	—	81.65	N 57°00'09" E	
499-500	25.00	90°00'00"	39.27	25.00	35.36	S 42°39'00" E	
505-513	500.00	19°03'00"	166.24	83.90	165.48	S 78°07'30" E	
724-722	500.00	276°22'46"	241.19	—	66.67	N 67°50'58" W	

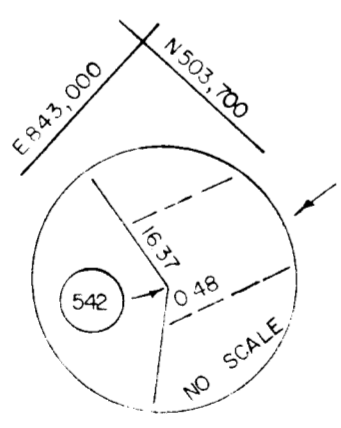
CLIFFORD SHAW
Liber WHH 404 Folio 68

THE HOWARD RESEARCH AND
DEVELOPMENT CORPORATION
Liber 463 Folio 196



TOTALS

	ACREAGE
All lots	15.119
R.O.W. Arterial	—
Local	3.180
Open Space	11.772
Total	30.071
Lots this plat (incl. open space)	58
Total Open Space lots	2



SURVEYOR'S, ENGINEER'S and OWNER'S CERTIFICATES

APPROVED: FOR PUBLIC WATER & PUBLIC SEWERAGE SYSTEMS, HOWARD COUNTY HEALTH DEPT.	_____ Date
County Health Officer	_____ Date
APPROVED: HOWARD COUNTY PLANNING COMM.	_____ Date
Chairman	_____ Date
Director	_____ Date
APPROVED: HOWARD COUNTY ROADS DEPARTMENT	_____ Date
Roads Superintendent	_____ Date
APPROVED: HOWARD COUNTY METROPOLITAN COMM.	_____ Date
Chief Engineer	_____ Date

The undersigned, owner of the property shown on this Plat, grants unto, (1) the Howard County Metropolitan Commission, its successors and assigns, the right to lay, construct and maintain water and sewer mains and laterals therefor in and under all road and street rights-of-way as shown hereon; (2) further, it adopts this plan of subdivision and reserves the fee simple title to the beds of the streets and/or roads hereon, except however, for one dollar consideration, it herewith grants the right and option to the Board of County Commissioners of Howard County to acquire (within a period of five years commencing with the date of recording of this plat among the Land Records of Howard County) the fee simple title to the beds of the streets and/or roads shown hereon, together with such adjacent land, if any, as may be shown on this plat as areas designated for the installation of street lighting facilities, reserving, however, unto Grantor, its successors and assigns, the right in perpetuity to lay, construct, enlarge, maintain and use cables and/or conduits for electrical transmission and other purposes beneath the surface of the lands subject to the rights granted herein to said Board of County Commissioners. The undersigned certify that the subdivision plan shown hereon is correct as complying with the requirements of Final Development Plan Phase _____ recorded in Plat Book _____ folios _____ to _____, each inclusive, with all Open Space shown thereon to be used for drainage easements, if necessary, and the requirements of Article 17, Section 60 of the annotated code of Maryland concerning the making of this Plat and setting of markers have been complied with. The land shown hereon is a part of the land which by deed dated December 13, 1966 and recorded among the Land Records of Howard County, Maryland in Liber 463 folio 196 was granted and conveyed by C. Aileen Ames to the Howard Research and Development Corporation.

PROFESSIONAL LAND SURVEYOR: (By) Richard P. Browne 5467
RICHARD P. BROWNE ASSOCIATES Reg. No. _____
COLUMBIA, MARYLAND

PROFESSIONAL ENGINEER: (By) Richard P. Browne 5238
RICHARD P. BROWNE ASSOCIATES Reg. No. _____
COLUMBIA, MARYLAND

OWNER: (By) David W. Warner
THE HOWARD RESEARCH AND DEVELOPMENT CORPORATION Auth. Agent
VILLAGE OF CROSS KEYS, BALTIMORE, MARYLAND

RECORDED IN PLAT BOOK 17 FOLIO 48
on _____, 19 _____ among The
Land Records of Howard County, Maryland.

COLUMBIA
VILLAGE OF OAKLAND MILLS
TALBOTT SPRINGS

SECTION 4
AREA 1
Sheet 3 of 9
6th Election District of Howard County, Md.
Scale: 1" = 100' Date: NOV 18, 1968

COLUMBIA

ALL COORDINATES ARE BASED ON THE MARYLAND STATE GRID SYSTEM

CURVE			DATA			
NOS.	RAD.	Δ	ARC.	TAN.	CH.	L.C.B.
64 - 832	568.05	189°55'47"	187.66	94.70	186.82	S 06°59'27" E
832 - 861	568.05	08°41'40"	36.63	18.32	36.62	S 18° 9' 10" E
84 - 861	568.05	22°31'22"	224.30	113.63	222.85	S 08°50'17" E
815 - 1030	760.79	13° 36'52"	620.14	91.05	180.81	S 19°43'44" W
1030 - 1029	25.00	93°53'44"	40.97	26.76	36.54	S 73°30'07" W
864 - 821	480.00	24°44'00"	207.21	105.24	205.60	N 71°55'00" W
823 - 843	1149.99	05°50'00"	117.08	59.59	117.03	N 81°22'00" W
848 - 849	25.00	90°00'00"	39.27	25.00	35.36	N 33°27'00" W
859 - 857	235.00	50°40'00"	207.81	111.25	201.11	N 13°47'00" W
857 - 863	25.00	48° 11'23"	21.03	11.18	20.41	N 15°01'15" W
863 - 865	50.00	27°22'46"	24.19	—	56.67	S 50°53'00" W
865 - 858	25.00	48°11'23"	21.03	11.18	20.41	S 63°12'41" E
858 - 854	185.00	50°40'00"	163.59	87.58	158.32	S 13°47'00" E
851 - 847	25.00	90°00'00"	39.27	25.00	35.36	S 66°33'00" E
846 - 869	625.00	19°02'00"	21.762	104.78	206.67	N 68°41'00" W
875 - 880	25.00	48°11'23"	21.03	11.18	20.41	N 36°19'19" W
880 - 939	50.00	20°43'37"	178.56	—	97.70	N 66°28'01" E
732 - 734	50.00	23°04'26"	20.14	10.21	20.00	S 6°50'57" E
81 - 76	50.00	23°11'49"	20.24	10.26	20.10	N 89°10'45" E
832 - 831	25.00	86°18'20"	37.66	23.44	34.20	S 26°41'50" W
825 - 828	50.00	25°03'43"	218.63	—	81.65	S 55°24'30" E
818 - 827	25.00	70°31'44"	20.77	17.68	28.87	N 34°33'10" E
829 - 830	25.00	90°00'00"	39.27	25.00	35.36	S 65°09'00" E

NOTE:
THE AVERAGE FLOOD PLAIN ELEVATION FOR THE FOLLOWING LOTS SHALL BE AS FOLLOWS:

LOTS	ELEVATIONS
118	360.0
129	364.0
131	362.5
132	361.5
133	361.0
136	359.0
137	357.5

VILLAGE OF OAKLAND MILLS SECTION 4 TALBOTT SPRINGS AREA I SHEET 3 of 9

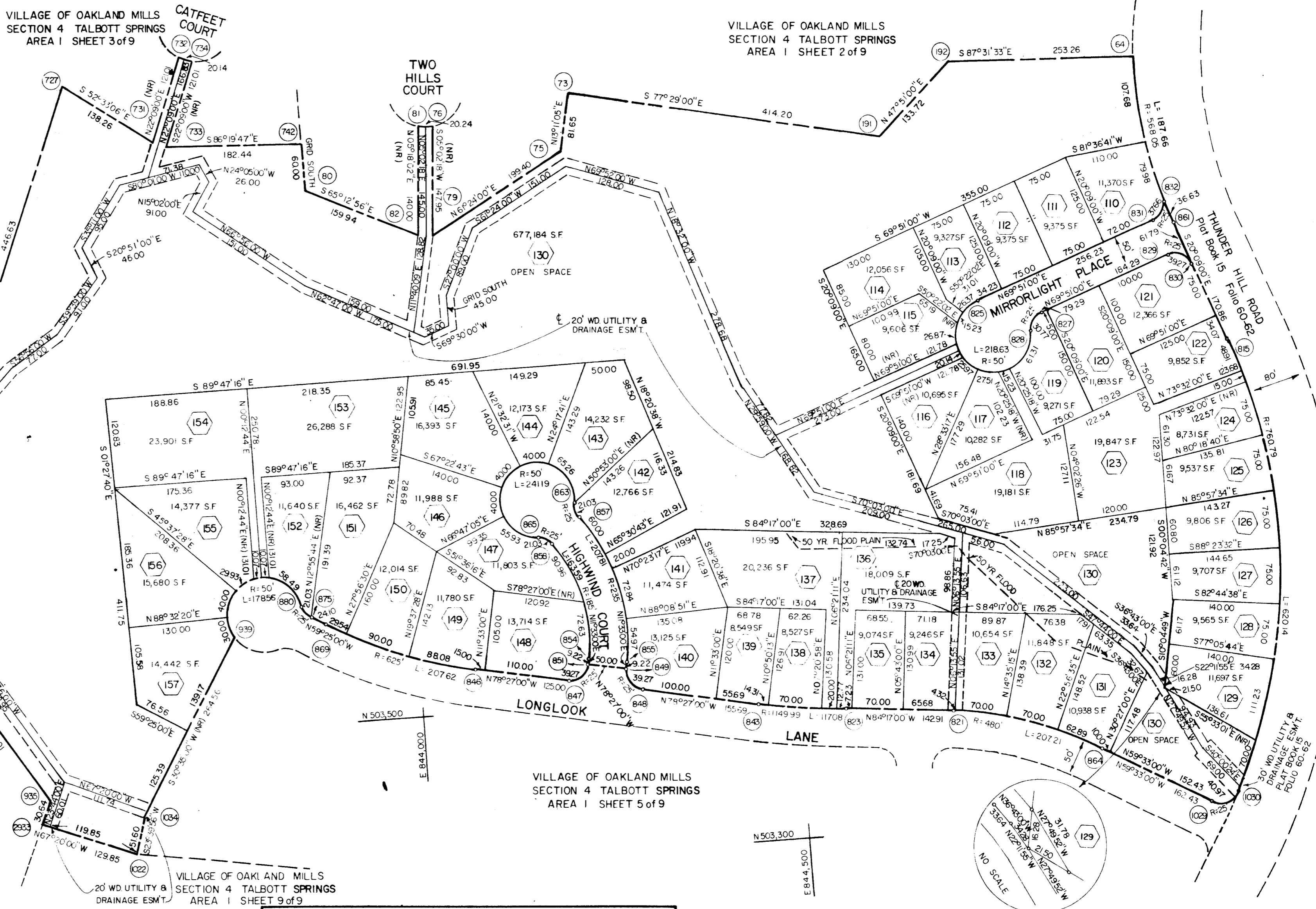
VILLAGE OF OAKLAND MILLS SECTION 4 TALBOTT SPRINGS AREA I SHEET 6 of 9

VILLAGE OF OAKLAND MILLS SECTION 4 TALBOTT SPRINGS AREA I SHEET 5 of 9

VILLAGE OF OAKLAND MILLS SECTION 4 TALBOTT SPRINGS AREA I SHEET 9 of 9

TABULATIONS

TOTALS	ACREAGE
All lots	= 13.656
R.O.W. Arterial	= 0.034
Local	= 0.845
Open Space	= 15.546
Total	= 30.081
Lots this plat (incl. open space)	= 48
Total Open Space lots	= 1



SURVEYOR'S, ENGINEER'S and OWNER'S CERTIFICATES

APPROVED: FOR PUBLIC WATER & PUBLIC SEWERAGE SYSTEMS, HOWARD COUNTY HEALTH DEPT.

County Health Officer _____ Date _____

APPROVED: HOWARD COUNTY PLANNING COMM.

Chairman _____ Date _____

Director _____ Date _____

APPROVED: HOWARD COUNTY ROADS DEPARTMENT

Roads Superintendent _____ Date _____

APPROVED: HOWARD COUNTY METROPOLITAN COMM.

Chief Engineer _____ Date _____

The undersigned, owner of the property shown on this Plat, grants unto, (1) the Howard County Metropolitan Commission, its successors and assigns, the right to lay, construct and maintain water and sewer mains and laterals therefor in and under all road and street rights-of-way as shown hereon; (2) further, it adopts this plan of subdivision and reserves the fee simple title to the beds of the streets and/or roads hereon, except however, for one dollar consideration, it herewith grants the right and option to the Board of County Commissioners of Howard County to acquire (within a period of five years commencing with the date of recording of this plat among the Land Records of Howard County) the fee simple title to the beds of the streets and/or roads shown hereon, together with such adjacent land, if any, as may be shown on this plat as areas designated for the installation of street lighting facilities, reserving, however, unto Grantor, its successors and assigns, the right in perpetuity to lay, construct, enlarge, maintain and use cables and/or conduits for electrical transmission and other purposes beneath the surface of the lands subject to the rights granted herein to said Board of County Commissioners. The undersigned certifies that the subdivision plan shown hereon is correct as complying with the requirements of Final Development Plan Phase _____ recorded in Plat Book _____ folios _____ to _____, each inclusive, with all Open Space shown thereon to be used for drainage easements, if necessary, and the requirements of Article 17, Section 60 of the annotated code of Maryland concerning the making of this Plat and setting of markers have been complied with. The land shown hereon is a part of the land which by deed dated December 13, 1966 and recorded among the Land Records of Howard County, Maryland in Liber 463 folio 196 was granted and conveyed by C. Aileen Ames to the Howard Research and Development Corporation.

PROFESSIONAL LAND SURVEYOR
(By) Richard P. Browne 54F7
RICHARD P. BROWNE ASSOCIATES Reg. No.
COLUMBIA, MARYLAND

PROFESSIONAL ENGINEER
(By) Richard P. Browne 523E
RICHARD P. BROWNE ASSOCIATES Reg. No.
COLUMBIA, MARYLAND

OWNER
(By) David H. Warner
THE HOWARD RESEARCH AND DEVELOPMENT CORPORATION Auth. Agent
VILLAGE OF CROSS KEYS, BALTIMORE, MARYLAND

RECORDED IN PLAT BOOK 17 FOLIO 49
on _____, 19 _____ among The
Land Records of Howard County, Maryland.

COLUMBIA
VILLAGE OF OAKLAND MILLS
TALBOTT SPRINGS

SECTION 4
AREA I
Sheet 4 of 9
6th Election District of Howard County, Md.
Scale: 1" = 100' Date: NOV 18, 1968

CURVE		DATA				
NOS	RAD.	Δ	ARC.	TAN	CH	L.C.B.
1030 - 1029	25.00	93°53'47"	40.97	26.76	36.54	N 73°30'07" E
864 - 821	480.00	24°44'00"	207.21	105.24	205.60	S 71°55'00" E
823 - 843	1149.99	05°50'00"	117.08	59.59	117.03	S 81°22'00" E
848 - 849	25.00	90°00'00"	39.27	25.00	35.36	S 33°27'00" E
851 - 847	25.00	90°00'00"	39.27	25.00	35.36	N 56°33'00" E
846 - 869	625.00	19°02'00"	207.62	104.78	206.67	S 68°56'00" E
875 - 880	25.00	48°11'23"	21.03	11.18	20.41	S 35°19'19" E
880 - 939	50.00	204°36'37"	178.56	—	97.70	N 65°28'01" E
939 - 1278	50.00	71°46'05"	62.63	36.17	58.61	S 71°43'20" E
880 - 1278	50.00	276°22'46"	241.19	—	66.67	S 30°35'01" W
1278 - 1276	25.00	48°11'23"	21.03	11.18	20.41	S 83°30'41" E
1271 - 1245	675.00	19°02'00"	224.23	113.16	223.20	S 68°56'00" E
1244 - 1224	1199.99	05°50'00"	122.17	61.14	122.12	S 81°22'00" E
1237 - 1236	25.00	90°00'00"	39.27	25.00	35.36	S 39°17'00" E
1233 - 1241	325.00	26°36'00"	150.88	76.83	149.53	S 07°35'00" E
1242 - 1284	25.00	48°11'23"	21.03	11.18	20.41	S 03°12'41" W
1284 - 1240	50.00	276°22'46"	241.19	—	66.67	N 69°07'02" E
1240 - 1239	25.00	48°11'23"	21.03	11.18	20.41	N 44°58'40" W
1238 - 1229	275.00	26°36'00"	127.67	65.01	126.53	N 07°36'00" W
1230 - 1225	25.00	90°00'00"	39.27	25.00	35.36	N 56°43'00" E
1225 - 1261	430.00	24°44'00"	185.62	94.28	184.18	S 71°55'00" E
1431 - 1432	25.00	90°00'00"	39.27	25.00	35.36	S 14°33'00" E
1030 - 1433	760.79	03°53'47"	4.72	25.87	51.73	S 28°30'07" E
1235 - 1274	740.00	05°36'04"	76.77	36.42	76.74	S 27°37'55" W

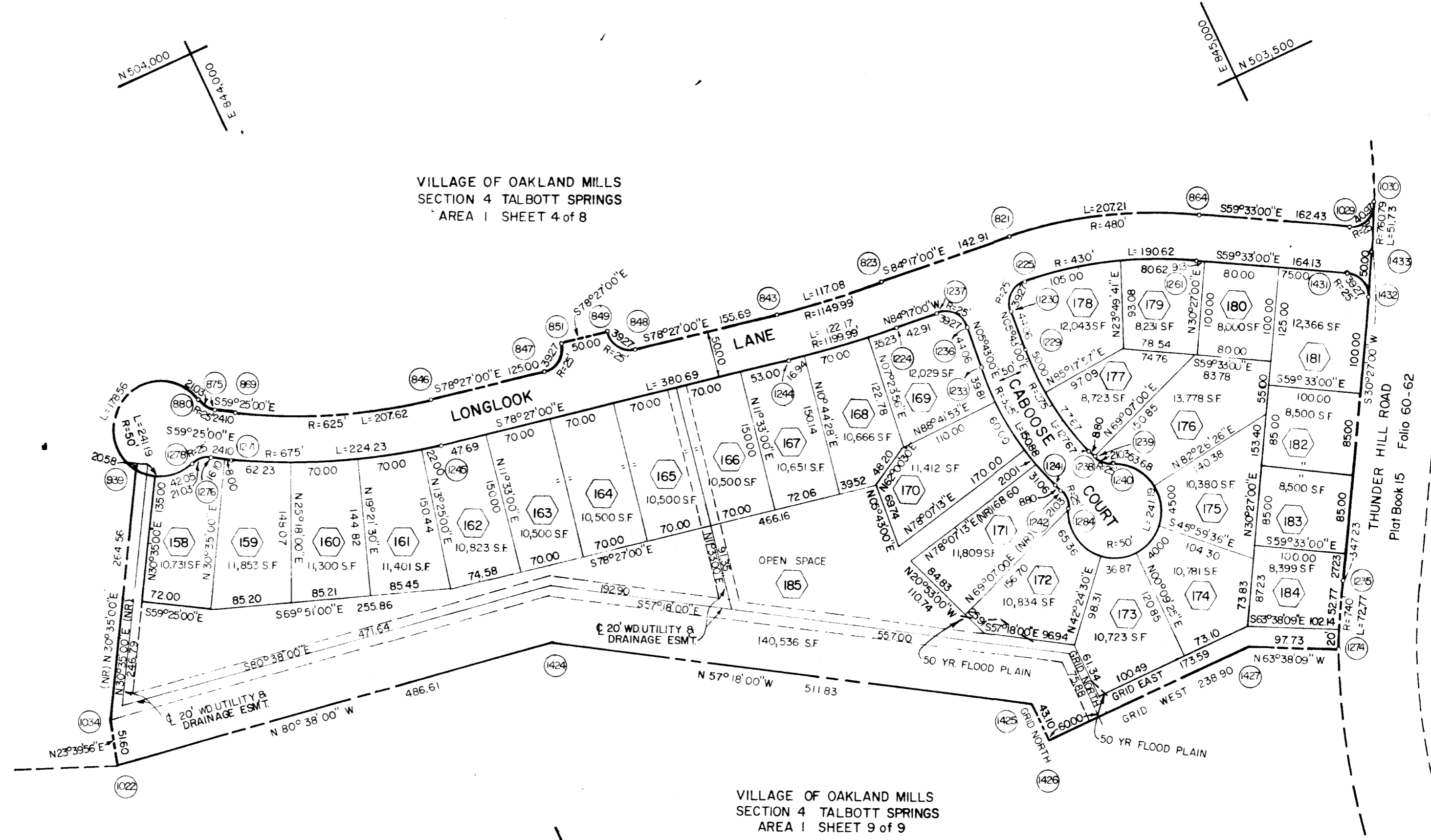
NOTE:
THE AVERAGE FLOOD PLAIN ELEVATION FOR THE FOLLOWING LOTS SHALL BE AS FOLLOWS:

LOTS	ELEVATIONS
161	340.0
162	341.0
163	342.0
164	343.0
172	352.0
173	353.0

COLUMBIA

ALL COORDINATES ARE BASED ON THE MARYLAND STATE GRID SYSTEM

VILLAGE OF OAKLAND MILLS
SECTION 4 TALBOTT SPRINGS
AREA 1 SHEET 4 of 8



VILLAGE OF OAKLAND MILLS
SECTION 4 TALBOTT SPRINGS
AREA 1 SHEET 9 of 9

TABULATIONS

TOTALS	ACREAGE
All lots	= 6.564
R.O.W. Arterial	= 0.036
Local	= 2.098
Open Space	= 3.226
Total	= 11.924
Lots this plat (incl. open space)	= 28
Total Open Space lots	= 1

SURVEYOR'S, ENGINEER'S and OWNER'S CERTIFICATES

APPROVED: FOR PUBLIC WATER & PUBLIC SEWERAGE SYSTEMS, HOWARD COUNTY HEALTH DEPT.	County Health Officer _____ Date _____
APPROVED: HOWARD COUNTY PLANNING COMM.	Chairman _____ Date _____
APPROVED: HOWARD COUNTY ROADS DEPARTMENT	Director _____ Date _____
APPROVED: HOWARD COUNTY METROPOLITAN COMM.	Roads Superintendent _____ Date _____
Chief Engineer _____ Date _____	

The undersigned, owner of the property shown on this Plat, grants unto, (1) the Howard County Metropolitan Commission, its successors and assigns, the right to lay, construct and maintain water and sewer mains and laterals therefor in and under all road and street rights-of-way as shown hereon; (2) further, it adopts this plan of subdivision and reserves the fee simple title to the beds of the streets and/or roads hereon, except however, for one dollar consideration, it herewith grants the right and option to the Board of County Commissioners of Howard County to acquire (within a period of five years commencing with the date of recording of this plat among the Land Records of Howard County) the fee simple title to the beds of the streets and/or roads shown hereon, together with such adjacent land, if any, as may be shown on this plat as areas designated for the installation of street lighting facilities, reserving, however, unto Grantor, its successors and assigns, the right in perpetuity to lay, construct, enlarge, maintain and use cables and/or conduits for electrical transmission and other purposes beneath the surface of the lands subject to the rights granted herein to said Board of County Commissioners. The undersigned certifies that the subdivision plan shown hereon is correct as complying with the requirements of Final Development Plan Phase _____ recorded in Plat Book _____ folios _____ to _____, each inclusive, with all Open Space shown thereon to be used for drainage easements, if necessary, and the requirements of Article 17, Section 60 of the annotated code of Maryland concerning the making of this Plat and setting of markers have been complied with. The land shown hereon is a part of the land which by deed dated December 13, 1966 and recorded among the Land Records of Howard County, Maryland in Liber 463 folio 196 was granted and conveyed by C. Aileen Ames to the Howard Research and Development Corporation.

PROFESSIONAL LAND SURVEYOR
(By) Richard F. Browne 5467
RICHARD F. BROWNE ASSOCIATES Reg. No.
COLUMBIA, MARYLAND

PROFESSIONAL ENGINEER
(By) Richard F. Browne 5238
RICHARD F. BROWNE ASSOCIATES Reg. No.
COLUMBIA, MARYLAND

OWNER
(By) Gayle B. Nason
THE HOWARD RESEARCH AND DEVELOPMENT CORPORATION Auth. Agent
VILLAGE OF CROSS KEYS, BALTIMORE, MARYLAND

RECORDED IN PLAT BOOK 17 FOLIO 50
on _____, 19 _____ among The
Land Records of Howard County, Maryland.

COLUMBIA
VILLAGE OF OAKLAND MILLS
TALBOTT SPRINGS

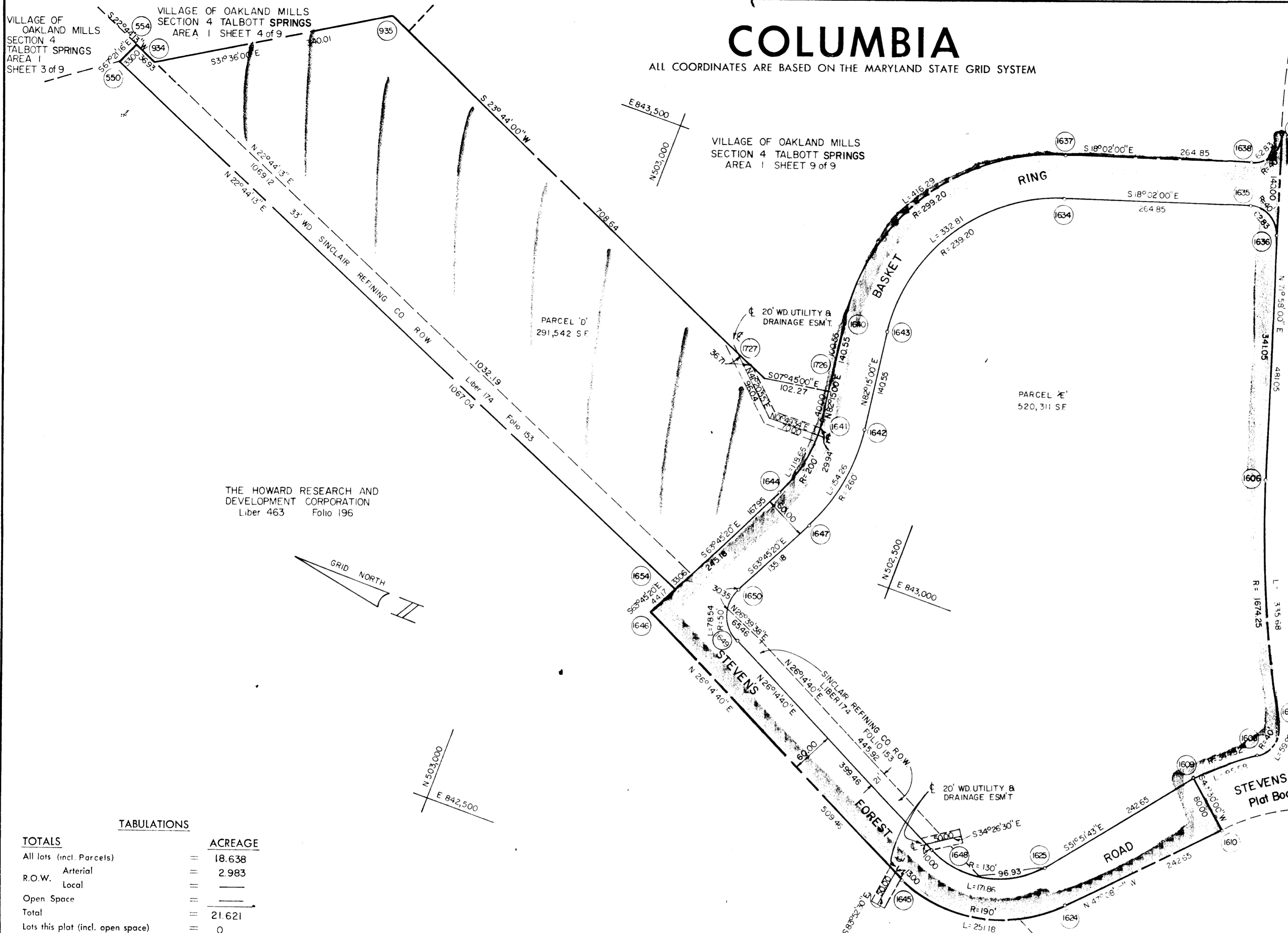
SECTION 4
AREA 1
Sheet 5 of 9
6th Election District of Howard County, Md.
Scale : 1" = 100' Date : NOV 18, 1968

COLUMBIA

ALL COORDINATES ARE BASED ON THE MARYLAND STATE GRID SYSTEM

VILLAGE OF OAKLAND MILLS
SECTION 4 TALBOTT SPRINGS
AREA 1 SHEET 9 of 9

NOS	CURVE					DATA
	RAD	Δ	ARC	TAN	CH	LCB
1624 - 1645	190.00	75°44'40"	251.18	147.76	233.28	N11°37'40" W
1640 - 1637	299.20	79°43'00"	416.29	249.80	383.51	S57°53'30" E
1638 - 1639	40.00	90°00'00"	62.83	40.00	56.57	N63°02'00" W
1606 - 1607	1674.25	11°29'15"	335.68	168.40	335.12	S66°13'22" W
1607 - 1608	40.00	85°54'38"	59.98	37.25	54.52	N76°33'46" W
1608 - 1609	344.52	15°53'43"	95.58	48.10	95.27	N41°33'08" W
1625 - 1648	130.00	75°44'40"	171.86	101.01	159.61	N11°37'40" W
1649 - 1650	50.00	90°00'00"	78.54	50.00	70.71	N71°14'40" W
1647 - 1642	260.00	32°59'40"	154.26	79.48	152.01	S80°45'10" E
1643 - 1634	239.20	79°43'00"	332.81	199.71	306.61	S57°53'30" E
1635 - 1636	40.00	90°00'00"	62.83	40.00	56.57	S26°58'00" W
1644 - 1641	200.00	33°59'40"	118.66	61.14	116.93	S80°45'10" E



TABULATIONS

TOTALS	ACREAGE
All lots (incl. Parcels)	= 18.638
R.O.W. Arterial	= 2.983
R.O.W. Local	=
Open Space	=
Total	= 21.621
Lots this plat (incl. open space)	= 0
Total Open Space lots	=
Parcels this sheet	= 2

SURVEYOR'S, ENGINEER'S and OWNER'S CERTIFICATES

APPROVED: FOR PUBLIC WATER & PUBLIC SEWERAGE SYSTEMS, HOWARD COUNTY HEALTH DEPT.

County Health Officer _____ Date _____

APPROVED: HOWARD COUNTY PLANNING COMM.

Chairman _____ Date _____

Director _____ Date _____

APPROVED: HOWARD COUNTY ROADS DEPARTMENT

Roads Superintendent _____ Date _____

APPROVED: HOWARD COUNTY METROPOLITAN COMM.

Chief Engineer _____ Date _____

The undersigned, owner of the property shown on this Plat, grants unto, (1) the Howard County Metropolitan Commission, its successors and assigns, the right to lay, construct and maintain water and sewer mains and laterals therefor in and under all road and street rights-of-way as shown hereon; (2) further, it adopts this plan of subdivision and reserves the fee simple title to the beds of the streets and/or roads hereon, except however, for one dollar consideration, it herewith grants the right and option to the Board of County Commissioners of Howard County to acquire (within a period of five years commencing with the date of recording of this plat among the Land Records of Howard County) the fee simple title to the beds of the streets and/or roads shown hereon, together with such adjacent land, if any, as may be shown on this plat as areas designated for the installation of street lighting facilities, reserving, however, unto Grantor, its successors and assigns, the right in perpetuity to lay, construct, enlarge, maintain and use cables and/or conduits for electrical transmission and other purposes beneath the surface of the lands subject to the rights granted herein to said Board of County Commissioners. The undersigned certify that the subdivision plan shown hereon is correct as complying with the requirements of Final Development Plan Phase _____ recorded in Plat Book _____ folios _____ to _____, each inclusive, with all Open Space shown thereon to be used for drainage easements, if necessary, and the requirements of Article 17, Section 60 of the annotated code of Maryland concerning the making of this Plat and setting of markers have been complied with. The land shown hereon is a part of the land which by deed dated December 13, 1966 and recorded among the Land Records of Howard County, Maryland in Liber 463 folio 196 was granted and conveyed by C. Aileen Ames to the Howard Research and Development Corporation.

PROFESSIONAL LAND SURVEYOR
(By) Richard P. Browne 5467
RICHARD P. BROWNE ASSOCIATES Reg. No.
COLUMBIA, MARYLAND

PROFESSIONAL ENGINEER
(By) Richard P. Browne 5238
RICHARD P. BROWNE ASSOCIATES Reg. No.
COLUMBIA, MARYLAND

OWNER
(By) David L. Warner
THE HOWARD RESEARCH AND DEVELOPMENT CORPORATION Auth. Agent
VILLAGE OF CROSS KEYS, BALTIMORE, MARYLAND

RECORDED IN PLAT BOOK 17 FOLIO 51
on _____, 19 _____ among The
Land Records of Howard County, Maryland.

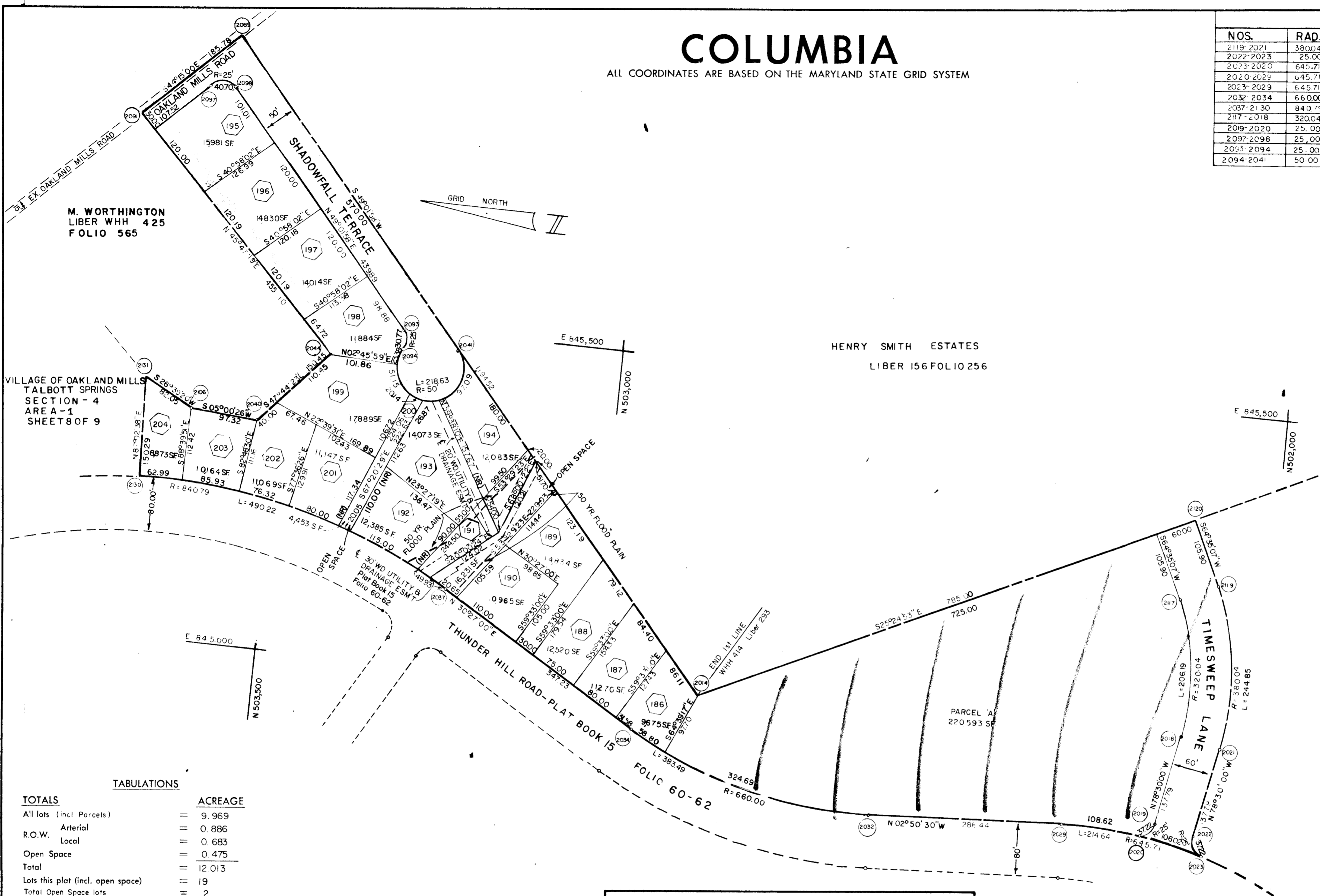
COLUMBIA
VILLAGE OF OAKLAND MILLS
TALBOTT SPRINGS

SECTION 4
AREA 1
Sheet 6 of 9
6th Election District of Howard County, Md.
Scale : 1" = 100' Date : NOV 18, 1968

COLUMBIA

ALL COORDINATES ARE BASED ON THE MARYLAND STATE GRID SYSTEM

CURVE DATA						
NOS.	RAD.	Δ	ARC.	TAN.	CH.	L.C.B.
2119-2021	380.04	36°54'53"	244.85	126.84	240.64	S 83°02'33"W
2022-2023	25.00	85°17'45"	3.722	23.03	3.387	S 58°51'05"W
2023-2020	645.71	09°24'26"	106.02	53.13	105.90	N 11°30'00"E
2020-2029	645.71	09°38'17"	108.62	54.44	108.49	N 01°58'38"E
2023-2029	645.71	19°02'43"	214.64	108.32	213.65	N 06°40'51"E
2032-2034	66.000	33°17'30"	383.49	197.33	378.12	N 13°48'15"E
2037-2130	84.079	33°24'22"	490.22	252.30	483.30	N 13°44'49"E
2117-2018	320.04	36°54'53"	206.19	106.82	202.65	S 83°02'33"W
2019-2020	25.00	85°17'47"	37.22	23.03	33.87	N 35°51'08"W
2097-2098	25.00	93°06'58"	40.70	26.47	36.35	S 02°23'29"W
2053-2094	25.00	70°31'44"	30.77	17.68	28.87	S 84°7'50"W
2094-2041	50.00	250°31'43"	2.863	—	8165	S 05°42'10"E



M. WORTHINGTON
LIBER WHH 425
FOLIO 565

VILLAGE OF OAKLAND MILLS
TALBOTT SPRINGS
SECTION - 4
AREA - 1
SHEET 8 OF 9

HENRY SMITH ESTATES
LIBER 156 FOLIO 256

THE HOWARD RESEARCH AND
DEVELOPMENT CORPORATION
LIBER 463 FOLIO 196

TABULATIONS

TOTALS	ACREAGE
All lots (incl. Parcels)	= 9.969
Arterial	= 0.886
R.O.W. Local	= 0.683
Open Space	= 0.475
Total	= 12.013
Lots this plat (incl. open space)	= 19
Total Open Space lots	= 2
Parcels this sheet	= 1

NOTE:
THE AVERAGE FLOOD PLAIN ELEVATION FOR
THE FOLLOWING LOTS SHALL BE AS FOLLOWS:

LOTS	ELEVATIONS
189	372.0
190	371.0
192-193	371.0
194	372.0

SURVEYOR'S, ENGINEER'S and OWNER'S CERTIFICATES

APPROVED: FOR PUBLIC WATER & PUBLIC SEWERAGE SYSTEMS, HOWARD COUNTY HEALTH DEPT.

County Health Officer _____ Date _____

APPROVED: HOWARD COUNTY PLANNING COMM.

Chairman _____ Date _____

Director _____ Date _____

APPROVED: HOWARD COUNTY ROADS DEPARTMENT

Roads Superintendent _____ Date _____

APPROVED: HOWARD COUNTY METROPOLITAN COMM.

Chief Engineer _____ Date _____

The undersigned, owner of the property shown on this Plat, grants unto, (1) the Howard County Metropolitan Commission, its successors and assigns, the right to lay, construct and maintain water and sewer mains and laterals therefor in and under all road and street rights-of-way as shown hereon; (2) further, it adopts this plan of subdivision and reserves the fee simple title to the beds of the streets and/or roads hereon, except however, for one dollar consideration, it herewith grants the right and option to the Board of County Commissioners of Howard County to acquire (within a period of five years commencing with the date of recording of this plat among the Land Records of Howard County) the fee simple title to the beds of the streets and/or roads shown hereon, together with such adjacent land, if any, as may be shown on this plat as areas designated for the installation of street lighting facilities, reserving, however, unto Grantor, its successors and assigns, the right in perpetuity to lay, construct, enlarge, maintain and use cables and/or conduits for electrical transmission and other purposes beneath the surface of the lands subject to the rights granted herein to said Board of County Commissioners. The undersigned certify that the subdivision plan shown hereon is correct as complying with the requirements of Final Development Plan Phase _____ recorded in Plat Book _____ folios _____ to _____, each inclusive, with all Open Space shown thereon to be used for drainage easements, if necessary, and the requirements of Article 17, Section 60 of the annotated code of Maryland concerning the making of this Plat and setting of markers have been complied with. The land shown hereon is a part of the land which by deed dated December 13, 1966 and recorded among the Land Records of Howard County, Maryland in Liber 463 folio 196 was granted and conveyed by C. Aileen Ames to the Howard Research and Development Corporation.

PROFESSIONAL LAND SURVEYOR
(By) Richard P. Browne 5467
RICHARD P. BROWNE ASSOCIATES
COLUMBIA, MD.

PROFESSIONAL ENGINEER
(By) Richard P. Browne 5238
RICHARD P. BROWNE ASSOCIATES
COLUMBIA, MD.

OWNER
(By) Howard Research and Development Corporation
THE HOWARD RESEARCH AND DEVELOPMENT CORPORATION
VILLAGE OF CROSS KEYS, BALTIMORE, MD.

RECORDED IN PLAT BOOK 17 FOLIO 52
on _____, 19 _____ among The
Land Records of Howard County, Maryland.

COLUMBIA
VILLAGE OF OAKLAND MILLS
TALBOTT SPRINGS

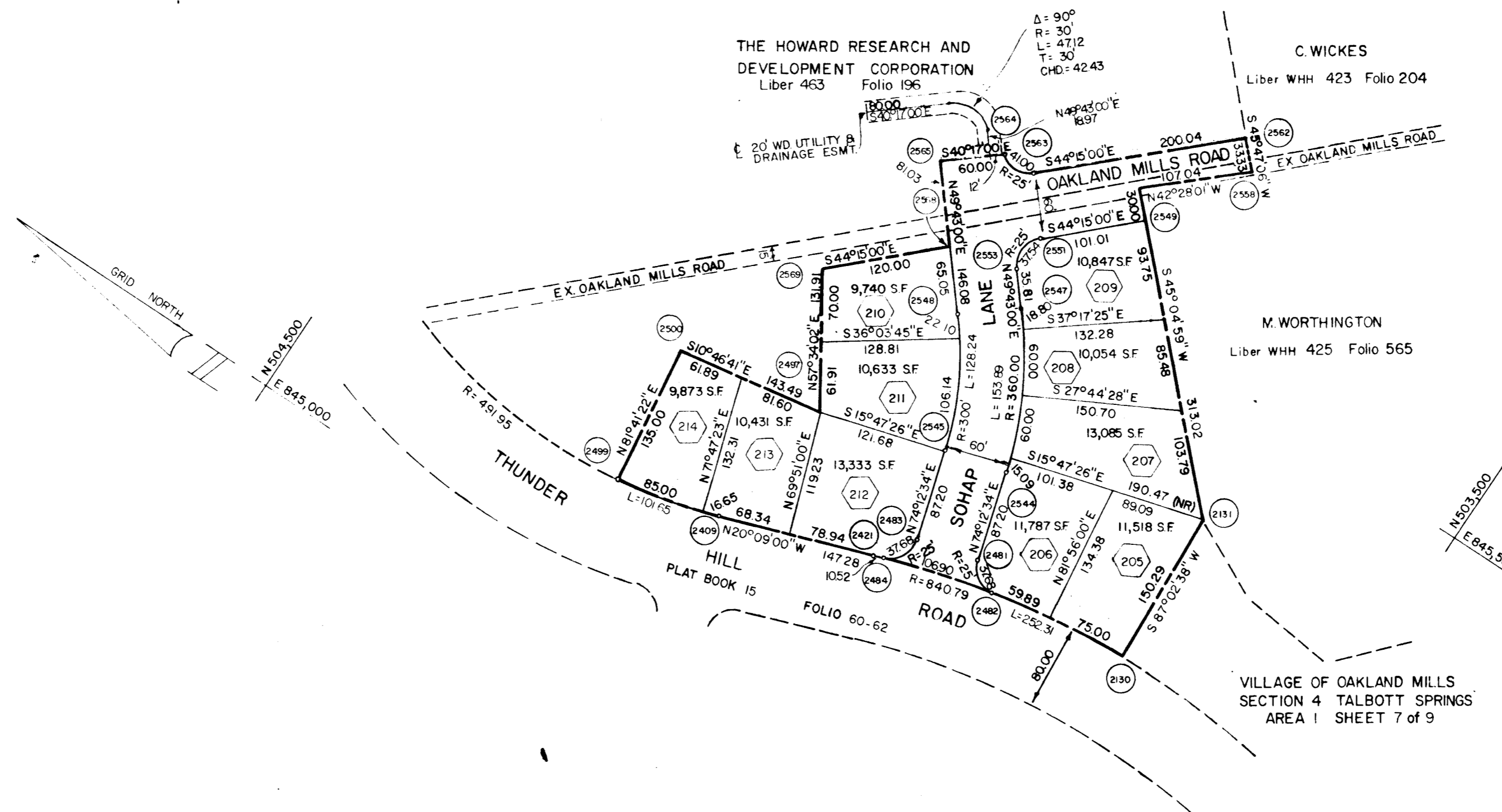
SECTION 4
AREA 1
Sheet 7 of 9
6th Election District of Howard County, Md.
Scale: 1" = 100' Date: NOV 18, 1968

CURVE		DATA				
NOS.	RAD.	Δ	ARC.	TAN.	CH.	L.C.B.
2130 - 2482	840.79	09°11'32"	134.89	67.59	134.75	N07°33'08" W
2482 - 2481	25.00	86°21'28"	37.68	23.46	34.21	N31°01'50" E
2481 - 2544	350.00	24°29'34"	153.89	78.14	152.72	N61°57'47" E
2544 - 2553	25.00	86°02'00"	37.54	23.33	34.11	S87°16'30" E
2553 - 2563	25.00	93°58'00"	41.00	26.79	36.56	N02°44'00" E
2563 - 2548	300.00	24°29'34"	128.24	65.12	127.27	S61°57'47" E
2482 - 2484	25.00	86°21'28"	37.68	23.46	34.21	N62°36'42" W
2484 - 2421	840.79	00°43'02"	10.52	5.26	10.52	N19°47'29" W
2409 - 2499	491.95	11°50'22"	101.65	51.01	101.47	N14°13'49" W
2482 - 2484	840.79	07°17'04"	106.90	53.52	106.82	N15°47'26" W
2130 - 2421	840.79	17°11'38"	252.31	127.11	251.37	N11°33'11" W

COLUMBIA

ALL COORDINATES ARE BASED ON THE MARYLAND STATE GRID SYSTEM

N 504,500
E 845,500



TABULATIONS

TOTALS	ACREAGE
All lots	= 2.555
R.O.W. Arterial	= 0.805
R.O.W. Local	=
Open Space	=
Total	= 3.360
Lots this plat (incl. open space)	= 10
Total Open Space lots	= 0

SURVEYOR'S, ENGINEER'S and OWNER'S CERTIFICATES

APPROVED: FOR PUBLIC WATER & PUBLIC SEWERAGE SYSTEMS, HOWARD COUNTY HEALTH DEPT.

County Health Officer _____ Date _____

APPROVED: HOWARD COUNTY PLANNING COMM.

Chairman _____ Date _____

Director _____ Date _____

APPROVED: HOWARD COUNTY ROADS DEPARTMENT

Roads Superintendent _____ Date _____

APPROVED: HOWARD COUNTY METROPOLITAN COMM.

Chief Engineer _____ Date _____

The undersigned, owner of the property shown on this Plat, grants unto, (1) the Howard County Metropolitan Commission, its successors and assigns, the right to lay, construct and maintain water and sewer mains and laterals therefor in and under all road and street rights-of-way as shown hereon; (2) further, it adopts this plan of subdivision and reserves the fee simple title to the beds of the streets and/or roads hereon, except however, for one dollar consideration, it herewith grants the right and option to the Board of County Commissioners of Howard County to acquire (within a period of five years commencing with the date of recording of this plat among the Land Records of Howard County) the fee simple title to the beds of the streets and/or roads shown hereon, together with such adjacent land, if any, as may be shown on this plat as areas designated for the installation of street lighting facilities, reserving, however, unto Grantor, its successors and assigns, the right in perpetuity to lay, construct, enlarge, maintain and use cables and/or conduits for electrical transmission and other purposes beneath the surface of the lands subject to the rights granted herein to said Board of County Commissioners. The undersigned certify that the subdivision plan shown hereon is correct as complying with the requirements of Final Development Plan Phase _____ recorded in Plat Book _____ folios _____ to _____, each inclusive, with all Open Space shown thereon to be used for drainage easements, if necessary, and the requirements of Article 17, Section 60 of the annotated code of Maryland concerning the making of this Plat and setting of markers have been complied with. The land shown hereon is a part of the land which by deed dated December 13, 1966 and recorded among the Land Records of Howard County, Maryland in Liber 463 folio 196 was granted and conveyed by C. Aileen Ames to the Howard Research and Development Corporation.

PROFESSIONAL LAND SURVEYOR

(By) Richard P. Browne 5467
RICHARD P. BROWNE ASSOCIATES Reg. No.
COLUMBIA, MARYLAND

PROFESSIONAL ENGINEER

(By) Richard P. Browne 5238
RICHARD P. BROWNE ASSOCIATES Reg. No.
COLUMBIA, MARYLAND

OWNER

(By) David W. Warner
THE HOWARD RESEARCH AND DEVELOPMENT CORPORATION Auth. Agent
VILLAGE OF CROSS KEYS, BALTIMORE, MARYLAND

RECORDED IN PLAT BOOK 17 FOLIO 53
on _____, 19 _____ among The
Land Records of Howard County, Maryland.

COLUMBIA
VILLAGE OF OAKLAND MILLS
TALBOTT SPRINGS

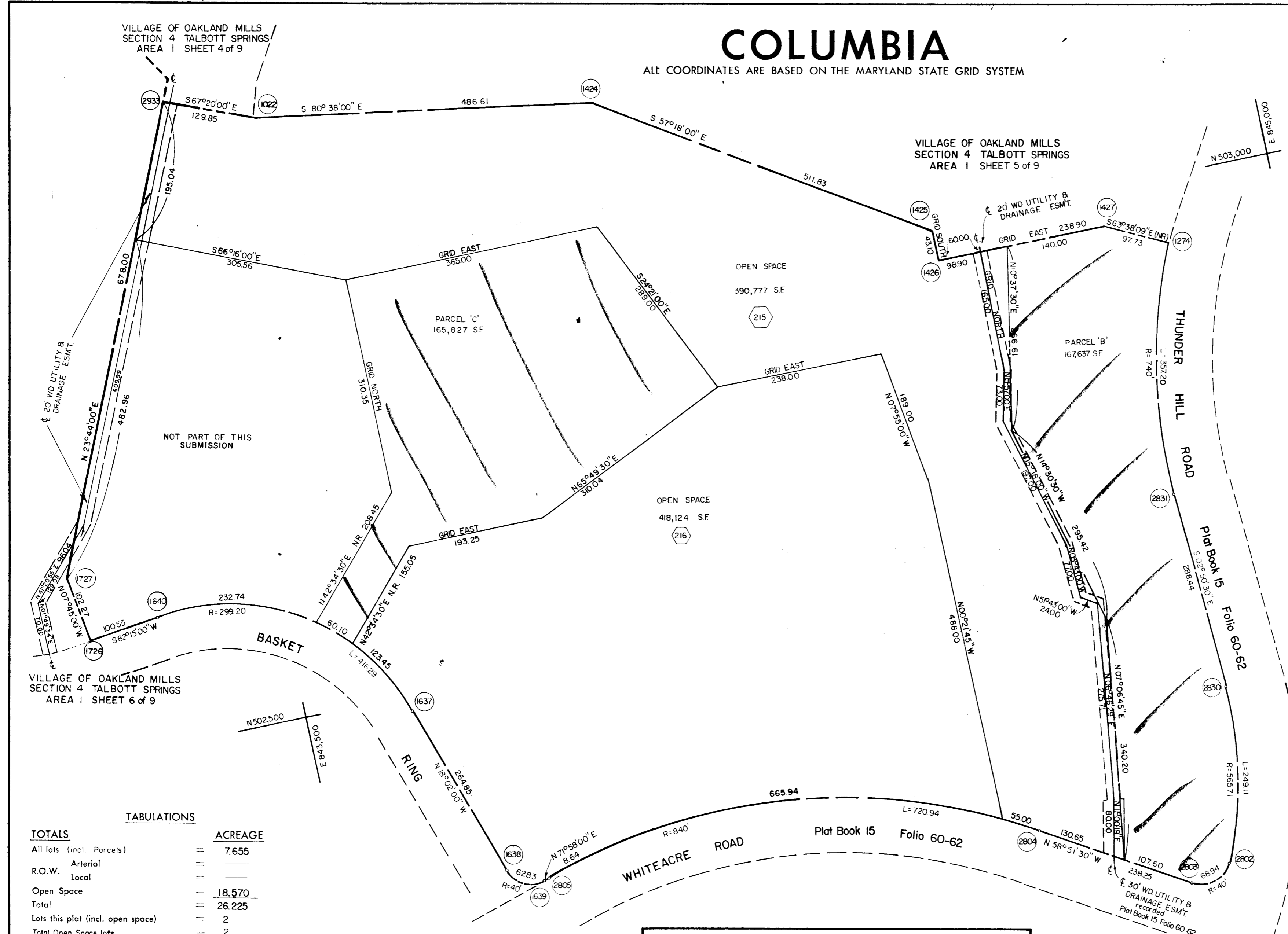
SECTION 4
AREA 1
Sheet 8 of 9

6th Election District of Howard County, Md.
Scale: 1" = 100' Date: NOV. 18, 1968

COLUMBIA

ALL COORDINATES ARE BASED ON THE MARYLAND STATE GRID SYSTEM

NOS.	CURVE			DATA		
	RAD	Δ	ARC.	TAN	CH	LCB.
1274 - 2831	740.00	27°33'25"	357.20	182.15	353.74	S10°55'12" W
2830 - 2802	565.71	25°13'50"	249.11	126.61	247.10	S09°46'25" W
2802 - 2803	40.00	98°45'10"	68.94	46.63	60.72	S71°45'55" W
2804 - 2805	840.00	49°10'30"	720.94	384.36	699.02	N83°26'45" W
1639 - 1638	40.00	90°00'00"	62.83	40.00	56.57	N63°02'00" W
1637 - 1640	299.20	79°43'00"	416.29	249.80	383.51	N57°53'30" W



TOTALS

	ACREAGE
All lots (incl. Parcels)	7.655
R.O.W. Arterial	
Local	
Open Space	18.570
Total	26.225
Lots this plat (incl. open space)	2
Total Open Space lots	2
Parcels this sheet	2

SURVEYOR'S, ENGINEER'S and OWNER'S CERTIFICATES

APPROVED: FOR PUBLIC WATER & PUBLIC SEWERAGE SYSTEMS, HOWARD COUNTY HEALTH DEPT.

County Health Officer _____ Date _____

APPROVED: HOWARD COUNTY PLANNING COMM.

Chairman _____ Date _____

Director _____ Date _____

APPROVED: HOWARD COUNTY ROADS DEPARTMENT

Roads Superintendent _____ Date _____

APPROVED: HOWARD COUNTY METROPOLITAN COMM.

Chief Engineer _____ Date _____

The undersigned, owner of the property shown on this Plat, grants unto, (1) the Howard County Metropolitan Commission, its successors and assigns, the right to lay, construct and maintain water and sewer mains and laterals therefor in and under all road and street rights-of-way as shown hereon; (2) further, it adopts this plan of subdivision and reserves the fee simple title to the beds of the streets and/or roads hereon, except however, for one dollar consideration, it herewith grants the right and option to the Board of County Commissioners of Howard County to acquire (within a period of five years commencing with the date of recording of this plat among the Land Records of Howard County) the fee simple title to the beds of the streets and/or roads shown hereon, together with such adjacent land, if any, as may be shown on this plat as areas designated for the installation of street lighting facilities, reserving, however, unto Grantor, its successors and assigns, the right in perpetuity to lay, construct, enlarge, maintain and use cables and/or conduits for electrical transmission and other purposes beneath the surface of the lands subject to the rights granted herein to said Board of County Commissioners. The undersigned certify that the subdivision plan shown hereon is correct as complying with the requirements of Final Development Plan Phase _____ recorded in Plat Book _____ folios _____ to _____, each inclusive, with all Open Space shown thereon to be used for drainage easements, if necessary, and the requirements of Article 17, Section 60 of the annotated code of Maryland concerning the making of this Plat and setting of markers have been complied with. The land shown hereon is a part of the land which by deed dated December 13, 1966 and recorded among the Land Records of Howard County, Maryland in Liber 463 folio 196 was granted and conveyed by C. Aileen Ames to the Howard Research and Development Corporation.

PROFESSIONAL LAND SURVEYOR

(By) *Richard P. Browne* 5467
RICHARD P. BROWNE ASSOCIATES Reg. No.
COLUMBIA, MARYLAND

PROFESSIONAL ENGINEER

(By) *Richard P. Browne* 5238
RICHARD P. BROWNE ASSOCIATES Reg. No.
COLUMBIA, MARYLAND

OWNER

(By) *Dawn W. Warr*
THE HOWARD RESEARCH AND DEVELOPMENT CORPORATION Auth. Agent
VILLAGE OF CROSS KEYS, BALTIMORE, MARYLAND

RECORDED IN PLAT BOOK 17 FOLIO 54
on _____, 19 _____ among The
Land Records of Howard County, Maryland.

COLUMBIA
VILLAGE OF OAKLAND MILLS
TALBOTT SPRINGS

SECTION 4
AREA 1
Sheet 9 of 9
6th Election District of Howard County, Md.
Scale: 1" = 100' Date: NOV 18, 1968