

COLUMBIA

ALL COORDINATES ARE BASED ON THE MARYLAND STATE GRID SYSTEM

NO.	NORTH	EAST
1	507 713.52	848 049.24
2	507 783.19	847 896.16
3	507 727.69	847 425.85
4	507 679.62	848 099.65
5	507 630.87	848 202.51
6	507 557.35	848 475.16
7	507 440.01	848 440.66
8	507 297.38	848 361.50
9	507 061.30	848 061.78
10	506 781.72	847 903.54
11	506 389.42	847 782.51
12	506 227.42	847 782.89
15	507 623.19	848 069.38
16	507 528.97	848 012.63
17	507 494.65	848 021.14
18	507 448.22	848 098.24
20	507 406.38	848 072.44
21	507 451.82	847 995.35
22	507 443.30	847 961.03
23	507 357.64	847 909.44
27	507 261.80	847 861.00
28	507 228.50	847 876.17
29	507 214.81	847 917.15
30	507 216.81	847 937.47
32	507 153.38	847 916.35
33	507 167.39	847 901.37
34	507 181.07	847 860.33
35	507 163.56	847 828.19
36	507 110.11	847 816.63
37	506 769.41	847 756.28
41	506 523.84	847 690.38
50	506 544.36	847 634.00
52	506 779.88	847 597.20
53	507 120.57	847 757.55
55	507 388.60	847 858.04
61	506 426.29	847 410.46
62	506 560.57	847 252.16
104	506 291.83	847 505.92
126	506 354.78	847 408.36
128	507 654.15	848 017.89
134	507 594.24	847 276.32
135	507 600.33	847 256.84
136	507 544.59	847 282.18
137	507 534.13	847 264.65
139	507 650.97	847 799.43
140	507 622.66	847 953.99
141	507 615.65	847 965.61
142	507 624.17	847 999.93
143	507 579.82	847 928.19
144	507 572.82	847 939.82
145	507 538.51	847 948.33
149	507 606.32	847 809.29
170	507 425.23	847 252.06
172	507 741.69	847 227.60
177	507 415.69	847 171.20
179	507 478.61	847 084.37
181	507 604.14	847 066.20
182	507 712.83	847 226.98
183	507 714.47	847 151.16
209	507 416.34	848 307.14

NO.	NORTH	EAST
210	507 398.22	848 271.48
213	507 450.81	848 234.66
214	507 430.48	848 215.74
276	507 688.67	848 103.85
277	506 830.22	847 265.10
278	506 758.60	847 259.97
279	506 767.16	847 140.28
281	506 752.58	847 136.99
282	506 709.03	847 248.81
283	506 282.31	847 606.47
413	506 191.61	847 78.56
417	504 971.57	847 220.61
418	506 014.65	847 262.37
419	505 189.31	847 036.37
423	504 923.94	847 420.35
425	504 866.15	847 404.70
426	505 064.76	847 124.50
428	505 023.66	847 253.08
430	505 337.96	847 015.19
431	505 378.40	846 968.08
432	505 413.65	846 965.39
436	506 347.99	847 333.61
437	505 356.33	847 247.44
438	505 382.50	847 259.64
439	505 273.27	847 102.03
440	506 279.92	847 069.66
442	506 171.28	847 507.06
446	506 975.17	847 447.37
447	506 014.25	847 401.84
449	506 191.81	847 506.68
452	505 250.83	847 128.54
453	505 196.79	847 119.19
459	505 956.26	847 134.62
460	506 164.12	847 384.49
476	505 743.37	847 365.87
477	505 737.56	847 386.39
478	505 705.43	847 333.76
479	505 686.97	847 341.97
480	505 747.18	847 284.62
481	505 744.49	847 249.37
482	505 820.37	847 314.50
483	505 785.12	847 317.18
492	505 367.43	846 837.44
493	505 405.12	846 837.15
499	505 277.26	846 963.08
499	505 317.81	846 915.84
500	505 315.54	846 880.95
572	506 224.50	846 782.12
573	505 128.94	846 854.70
576	505 052.37	846 891.62
579	504 921.26	846 905.51
587	504 837.42	847 114.75
588	504 809.57	847 143.47
589	504 751.00	847 072.07
590	504 795.56	847 157.92
591	504 732.82	847 081.53
654	505 480.49	846 726.25
664	505 297.39	846 744.73
671	505 450.27	846 659.71
752	505 438.66	846 874.84

NO.	NORTH	EAST
753	505 441.34	846 910.10
801	504 612.11	847 347.12
802	505 231.61	846 791.33
942	504 678.93	847 014.68
943	504 727.22	846 880.28
944	504 745.75	846 907.82
945	504 752.40	846 985.95
946	504 773.58	846 889.02
947	504 937.94	846 775.34
948	504 932.67	846 775.34
949	504 977.34	846 720.60
950	504 982.61	846 770.33
951	505 122.67	846 730.38
952	505 100.92	846 685.36
953	505 128.40	846 672.09
954	505 140.39	846 639.45
955	505 153.21	846 715.63
956	505 185.37	846 725.03
957	504 415.06	847 038.95
958	504 415.81	847 059.35
959	504 368.70	847 020.22
960	504 362.47	847 007.89
961	504 675.78	846 400.39
962	504 643.23	846 474.20
963	504 596.87	846 455.47
964	504 583.06	846 422.93
965	504 694.51	846 414.03
966	504 675.52	846 441.68
967	504 879.55	846 491.52
968	505 068.48	846 426.88
970	505 068.03	846 476.27
971	505 094.53	846 496.14
1114	504 394.36	846 346.69
1115	504 413.09	846 300.33
1116	504 338.27	846 454.17
1117	504 399.00	846 348.56
1118	504 353.80	846 460.44
1127	504 082.60	846 599.02
1130	504 212.31	846 723.32
1134	504 082.13	846 921.53
1135	504 177.73	846 905.28
1146	504 082.13	847 199.00
1211	505 183.21	846 110.19
1212	505 156.33	846 068.51
1214	505 367.21	846 336.68

NO.	NORTH	EAST
1215	505 411.35	846 262.17
1216	505 429.82	846 284.32
1217	505 356.32	846 202.12
1218	505 329.32	846 179.22
1219	505 189.84	846 190.51
1220	505 166.94	846 217.45
1221	505 181.86	846 401.85
1224	505 844.51	845 730.88
1225	505 517.05	845 916.65
1226	505 437.05	845 846.33
1227	505 436.06	846 061.43
1228	505 413.06	846 092.12
1229	505 478.50	846 167.12
1230	505 429.06	846 171.16
1231	505 400.16	846 198.09
1254	505 057.99	846 110.82
1255	505 081.38	846 399.95
1257	505 802.53	846 002.91
1258	505 938.81	845 942.68
1263	505 516.15	846 064.01
1264	505 544.95	846 078.88
1271	505 886.65	846 556.71
1272	505 872.61	846 570.92
1278	505 973.83	845 927.09
1279	505 998.24	845 981.90
1280	505 985.57	846 014.91
1283	505 720.90	846 105.38
1303	505 056.89	846 099.05
1322	506 028.27	846 110.83
1323	505 932.60	846 131.17
1324	505 939.89	846 035.25
1325	505 906.88	846 022.58
1378	505 589.17	846 290.26
1383	505 871.34	846 314.60
1384	505 557.93	846 316.08
1385	505 947.85	846 343.13
1386	506 005.10	846 223.41
1387	506 012.68	846 190.27
1388	506 033.27	846 264.72
1389	506 066.82	846 269.78
1424	506 116.39	846 324.88
1475	506 151.58	846 289.36
1604	507 033.81	845 340.34
1607	507 032.84	845 961.96
1608	507 059.84	846 077.68
1618	506 033.21	845 900.65
1619	506 057.62	845 955.46
1637	506 128.84	845 846.62
1652	506 191.39	846 026.92
1653	506 136.04	845 941.38
1654	506 103.10	845 933.00
1655	506 233.37	845 999.76
1656	506 178.02	845 914.22
1657	506 183.88	845 880.73
1658	506 329.67	846 056.56

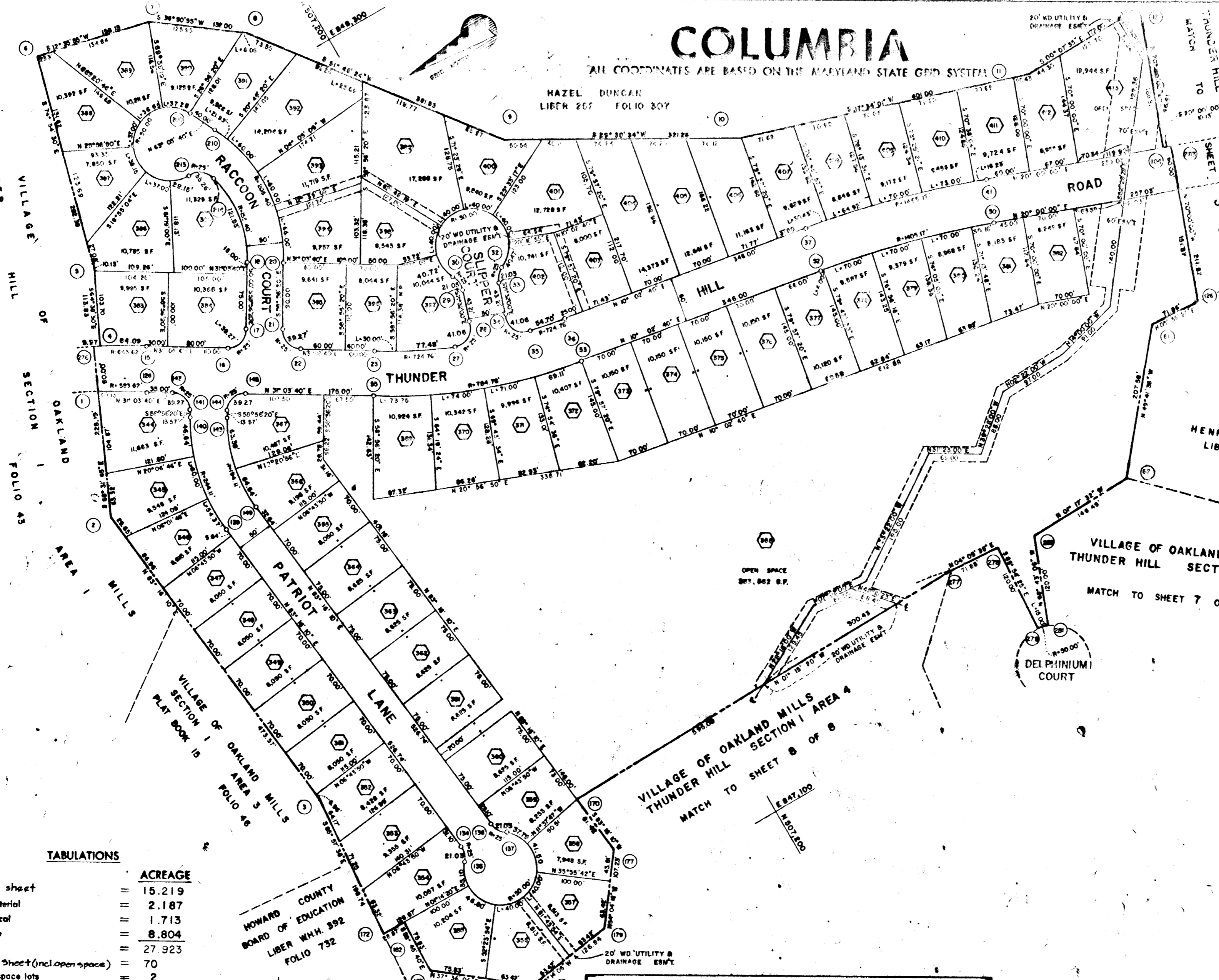
NO.	NORTH	EAST
1659	506 302.51	846 014.58
1663	506 349.34	846 043.83
1664	506 322.18	846 001.85
1667	506 611.93	846 024.10
1668	506 632.51	846 978.53
1669	506 687.19	846 003.23
1671	506 707.61	846 003.31
1672	506 666.61	846 048.80
1673	506 680.16	846 064.06
1675	506 302.97	845 904.84
1676	506 249.36	845 822.90
1679	506 386.20	845 850.99
1683	506 546.58	845 825.65
1694	506 947.08	846 010.89
1722	506 199.40	846 331.84
1727	506 168.22	846 370.90
1728	506 230.88	846 420.78
1729	506 284.62	846 347.80
1730	506 239.50	846 363.74
1731	506 274.74	846 360.21
1732	506 322.98	846 379.88
1733	506 302.15	846 345.22
1734	506 334.99	846 303.24
1735	506 406.76	846 246.81
1736	506 433.92	846 298.79
1772	506 605.20	846 291.76
1773	506 632.71	846 300.50
1830	506 312.28	846 392.66
1831	506 314.34	846 426.92
1843	506 359.94	846 473.22
1845	506 428.42	846 410.83
1847	506 445.27	846 436.87
1849	506 505.33	846 321.93
1850	506 606.03	846 378.32
1854	506 694.69	846 365.68
1855	506 775.21	846 416.10
1856	506 832.99	846 360.77
1857	506 684.08	846 382.65
1858	506 760.31	846 430.31
1861	506 556.06	846 485.24
1863	506 576.42	846 512.15
1864	506 614.91	846 512.15
1866	506 991.45	846 649.93
1871	506 207.42	845 790.59
1873	507 090.83	846 355.21
1874	506 322.98	846 306.20
2049	506 336.06	846 722.24
2050	506 352.27	846 802.64
2057	506 467.43	846 686.34
2058	506 499.15	846 683.17
2060	506 424.03	846 622.91
2072	506 647.58	846 845.48
2073	506 653.59	846 767.83
2074	506 633.79	846 741.43
2075	506 518.66	846 6

COLUMBIA

ALL COORDINATES ARE BASED ON THE MARYLAND STATE GRID SYSTEM

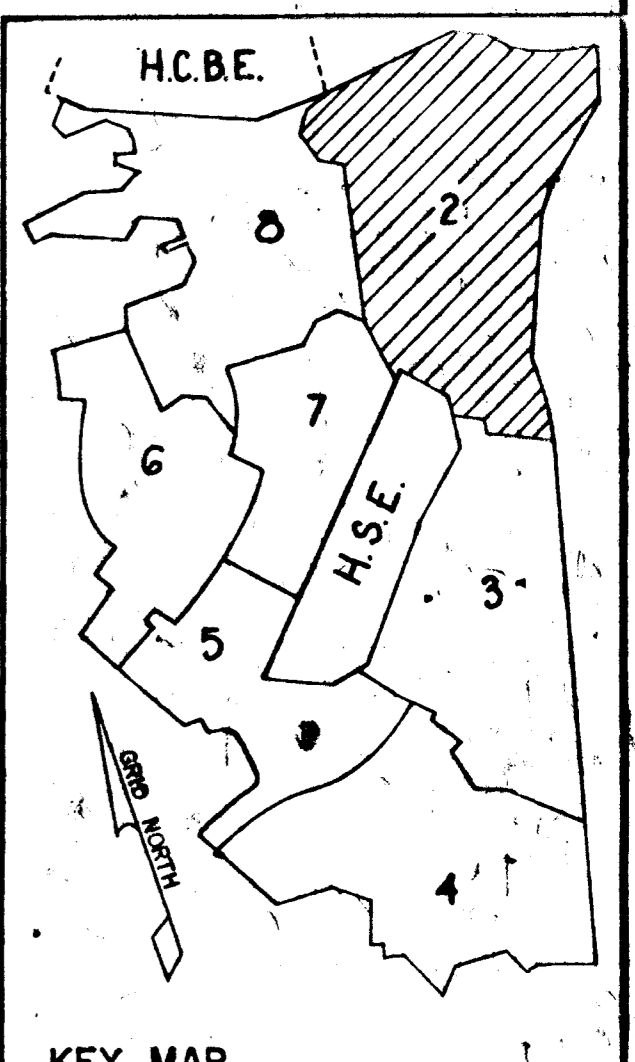
HAZEL DUNGAN
LIBER 257 FOLIO 307

NOS.	AREA	CURVE				L.C.F.
		A	ARC	TAN	CH	
1	1	04° 00' 00"	24.00	12.00	24.00	3.1831
2	2	04° 00' 00"	24.00	12.00	24.00	3.1831
3	3	04° 00' 00"	24.00	12.00	24.00	3.1831
4	4	04° 00' 00"	24.00	12.00	24.00	3.1831
5	5	04° 00' 00"	24.00	12.00	24.00	3.1831
6	6	04° 00' 00"	24.00	12.00	24.00	3.1831
7	7	04° 00' 00"	24.00	12.00	24.00	3.1831
8	8	04° 00' 00"	24.00	12.00	24.00	3.1831
9	9	04° 00' 00"	24.00	12.00	24.00	3.1831
10	10	04° 00' 00"	24.00	12.00	24.00	3.1831
11	11	04° 00' 00"	24.00	12.00	24.00	3.1831
12	12	04° 00' 00"	24.00	12.00	24.00	3.1831
13	13	04° 00' 00"	24.00	12.00	24.00	3.1831
14	14	04° 00' 00"	24.00	12.00	24.00	3.1831
15	15	04° 00' 00"	24.00	12.00	24.00	3.1831
16	16	04° 00' 00"	24.00	12.00	24.00	3.1831
17	17	04° 00' 00"	24.00	12.00	24.00	3.1831
18	18	04° 00' 00"	24.00	12.00	24.00	3.1831
19	19	04° 00' 00"	24.00	12.00	24.00	3.1831
20	20	04° 00' 00"	24.00	12.00	24.00	3.1831
21	21	04° 00' 00"	24.00	12.00	24.00	3.1831
22	22	04° 00' 00"	24.00	12.00	24.00	3.1831
23	23	04° 00' 00"	24.00	12.00	24.00	3.1831
24	24	04° 00' 00"	24.00	12.00	24.00	3.1831
25	25	04° 00' 00"	24.00	12.00	24.00	3.1831
26	26	04° 00' 00"	24.00	12.00	24.00	3.1831
27	27	04° 00' 00"	24.00	12.00	24.00	3.1831
28	28	04° 00' 00"	24.00	12.00	24.00	3.1831
29	29	04° 00' 00"	24.00	12.00	24.00	3.1831
30	30	04° 00' 00"	24.00	12.00	24.00	3.1831
31	31	04° 00' 00"	24.00	12.00	24.00	3.1831
32	32	04° 00' 00"	24.00	12.00	24.00	3.1831
33	33	04° 00' 00"	24.00	12.00	24.00	3.1831
34	34	04° 00' 00"	24.00	12.00	24.00	3.1831
35	35	04° 00' 00"	24.00	12.00	24.00	3.1831
36	36	04° 00' 00"	24.00	12.00	24.00	3.1831
37	37	04° 00' 00"	24.00	12.00	24.00	3.1831
38	38	04° 00' 00"	24.00	12.00	24.00	3.1831
39	39	04° 00' 00"	24.00	12.00	24.00	3.1831
40	40	04° 00' 00"	24.00	12.00	24.00	3.1831
41	41	04° 00' 00"	24.00	12.00	24.00	3.1831
42	42	04° 00' 00"	24.00	12.00	24.00	3.1831
43	43	04° 00' 00"	24.00	12.00	24.00	3.1831
44	44	04° 00' 00"	24.00	12.00	24.00	3.1831
45	45	04° 00' 00"	24.00	12.00	24.00	3.1831
46	46	04° 00' 00"	24.00	12.00	24.00	3.1831
47	47	04° 00' 00"	24.00	12.00	24.00	3.1831
48	48	04° 00' 00"	24.00	12.00	24.00	3.1831
49	49	04° 00' 00"	24.00	12.00	24.00	3.1831
50	50	04° 00' 00"	24.00	12.00	24.00	3.1831
51	51	04° 00' 00"	24.00	12.00	24.00	3.1831
52	52	04° 00' 00"	24.00	12.00	24.00	3.1831
53	53	04° 00' 00"	24.00	12.00	24.00	3.1831
54	54	04° 00' 00"	24.00	12.00	24.00	3.1831
55	55	04° 00' 00"	24.00	12.00	24.00	3.1831
56	56	04° 00' 00"	24.00	12.00	24.00	3.1831
57	57	04° 00' 00"	24.00	12.00	24.00	3.1831
58	58	04° 00' 00"	24.00	12.00	24.00	3.1831
59	59	04° 00' 00"	24.00	12.00	24.00	3.1831
60	60	04° 00' 00"	24.00	12.00	24.00	3.1831
61	61	04° 00' 00"	24.00	12.00	24.00	3.1831
62	62	04° 00' 00"	24.00	12.00	24.00	3.1831
63	63	04° 00' 00"	24.00	12.00	24.00	3.1831
64	64	04° 00' 00"	24.00	12.00	24.00	3.1831
65	65	04° 00' 00"	24.00	12.00	24.00	3.1831
66	66	04° 00' 00"	24.00	12.00	24.00	3.1831
67	67	04° 00' 00"	24.00	12.00	24.00	3.1831
68	68	04° 00' 00"	24.00	12.00	24.00	3.1831
69	69	04° 00' 00"	24.00	12.00	24.00	3.1831
70	70	04° 00' 00"	24.00	12.00	24.00	3.1831
71	71	04° 00' 00"	24.00	12.00	24.00	3.1831
72	72	04° 00' 00"	24.00	12.00	24.00	3.1831
73	73	04° 00' 00"	24.00	12.00	24.00	3.1831
74	74	04° 00' 00"	24.00	12.00	24.00	3.1831
75	75	04° 00' 00"	24.00	12.00	24.00	3.1831
76	76	04° 00' 00"	24.00	12.00	24.00	3.1831
77	77	04° 00' 00"	24.00	12.00	24.00	3.1831
78	78	04° 00' 00"	24.00	12.00	24.00	3.1831
79	79	04° 00' 00"	24.00	12.00	24.00	3.1831
80	80	04° 00' 00"	24.00	12.00	24.00	3.1831
81	81	04° 00' 00"	24.00	12.00	24.00	3.1831
82	82	04° 00' 00"	24.00	12.00	24.00	3.1831
83	83	04° 00' 00"	24.00	12.00	24.00	3.1831
84	84	04° 00' 00"	24.00	12.00	24.00	3.1831
85	85	04° 00' 00"	24.00	12.00	24.00	3.1831
86	86	04° 00' 00"	24.00	12.00	24.00	3.1831
87	87	04° 00' 00"	24.00	12.00	24.00	3.1831
88	88	04° 00' 00"	24.00	12.00	24.00	3.1831
89	89	04° 00' 00"	24.00	12.00	24.00	3.1831
90	90	04° 00' 00"	24.00	12.00	24.00	3.1831
91	91	04° 00' 00"	24.00	12.00	24.00	3.1831
92	92	04° 00' 00"	24.00	12.00	24.00	3.1831
93	93	04° 00' 00"	24.00	12.00	24.00	3.1831
94	94	04° 00' 00"	24.00	12.00	24.00	3.1831
95	95	04° 00' 00"	24.00	12.00	24.00	3.1831
96	96	04° 00' 00"	24.00	12.00	24.00	3.1831
97	97	04° 00' 00"	24.00	12.00	24.00	3.1831
98	98	04° 00' 00"	24.00	12.00	24.00	3.1831
99	99	04° 00' 00"	24.00	12.00	24.00	3.1831
100	100	04° 00' 00"	24.00	12.00	24.00	3.1831



TOTALS

Category	ACREAGE
Lots this sheet	15.219
Arterial	2.187
r.o.w. Local	1.713
Open Space	8.804
Total	27.923
Total Lots This Sheet (incl. open space)	70
Total open space lots	2



APPROVED: FOR PUBLIC WATER & PUBLIC SEWERAGE SYSTEMS, HOWARD COUNTY HEALTH DEPT.
 County Health Officer _____ Date _____
 APPROVED: HOWARD COUNTY PLANNING COMM.
 Chairman _____ Date 3-12-69
 Director _____ Date 3-13-69
 APPROVED: HOWARD COUNTY ROADS DEPARTMENT
 Roads Superintendent _____ Date _____
 APPROVED: HOWARD COUNTY METROPOLITAN COMM.
 Chief Engineer _____ Date _____

SURVEYOR'S, ENGINEER'S and OWNER'S CERTIFICATES

The undersigned, owner of the property shown on this Plat, grants unto, (1) the Howard County Metropolitan Commission, its successors and assigns, the right to lay, construct and maintain water and sewer mains and laterals therefor in and under all road and street rights-of-way as shown hereon; (2) further, it adopts this plan of subdivision and reserves the fee simple title to the beds of the streets and/or roads hereon, except however, for one dollar consideration, it herewith grants the right and option to the Board of County Commissioners of Howard County to acquire (within a period of five years commencing with the date of recording of this plat among the Land Records of Howard County) the fee simple title to the beds of the streets and/or roads shown hereon, together with such adjacent land, if any, as may be shown on this plat as areas designated for the installation of street lighting facilities, reserving, however, unto Grantor, its successors and assigns, the right in perpetuity to lay, construct, enlarge, maintain and use cables and/or conduits for electrical transmission and other purposes beneath the surface of the lands subject to the rights granted herein to said Board of County Commissioners. The undersigned certifies that the subdivision plan shown hereon is correct as complying with the requirements of Final Development Plan Phase 5B recorded in Plat Book 16 folios 20 to 26, each inclusive, with all Open Space shown thereon to be used for drainage easements, if necessary, and the requirements of Article 17, Section 60 of the annotated code of Maryland concerning the making of this Plat and setting of markers have been complied with. The land shown hereon is a part of the land which by deed dated December 13, 1966 and recorded among the Land Records of Howard County, Maryland in Liber 463 folio 196 was granted and conveyed by C. Aileen Ames to the Howard Research and Development Corporation.

PROFESSIONAL LAND SURVEYOR (By) Robert W. Thomas 5467
 PROFESSIONAL ENGINEER (By) Robert Williams 5238
 OWNER (By) David W. Thomas
 THE HOWARD RESEARCH AND DEVELOPMENT CORPORATION
 VILLAGE OF CROSS KEYS, ELLERSWOOD, MARYLAND

RECORDED IN PLAT BOOK 17 FOLIO 2
 on March 14, 1969 among The
 Land Records of Howard County, Maryland.

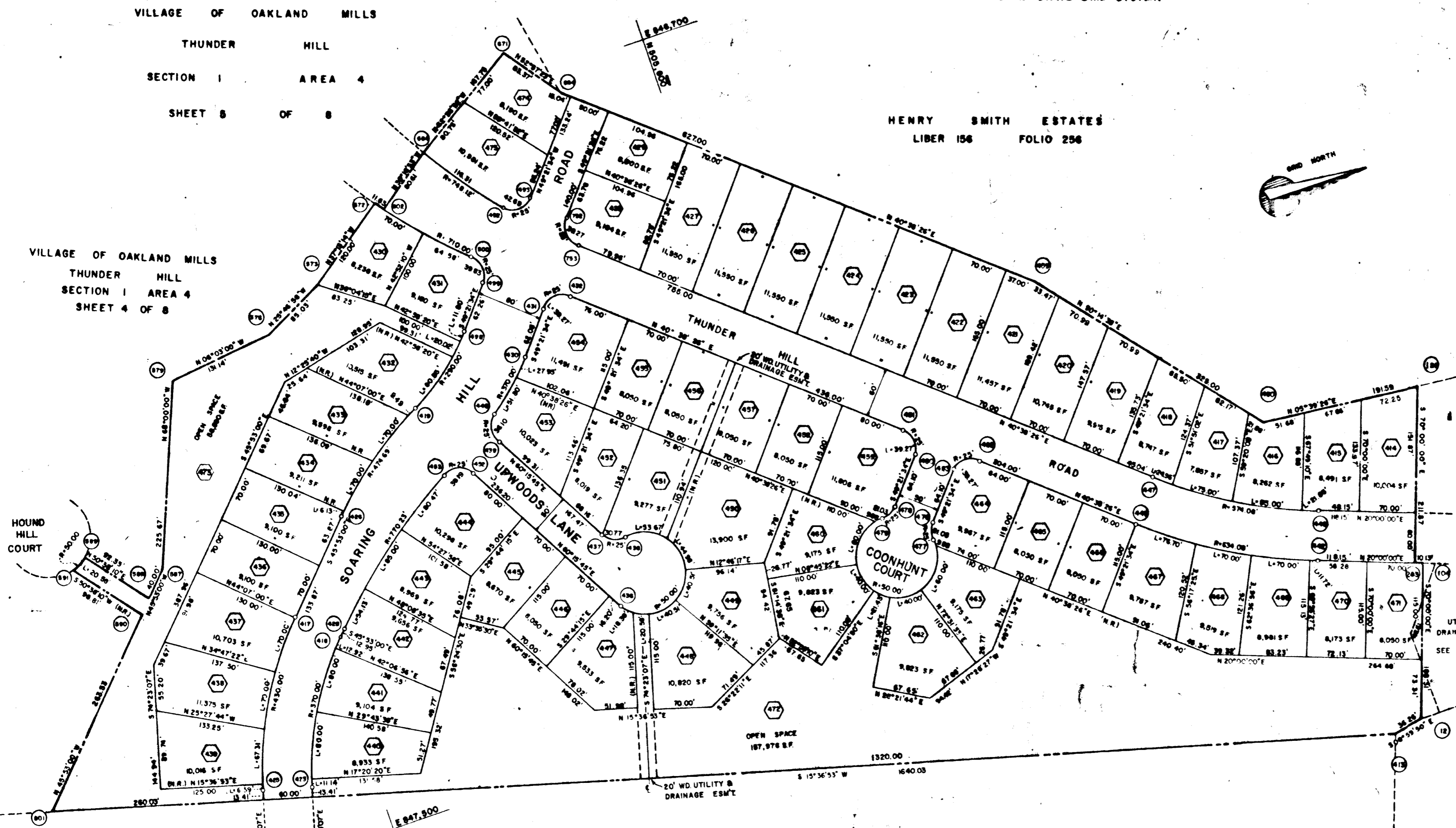
COLUMBIA
 VILLAGE OF OAKLAND MILLS
 THUNDER HILL

SECTION 1
 AREA 4
 Sheet 2 of 8
 6th Election District of Howard County, Md.
 Scale: 1" = 100' Date: 10 OCT. 1968

COLUMBIA

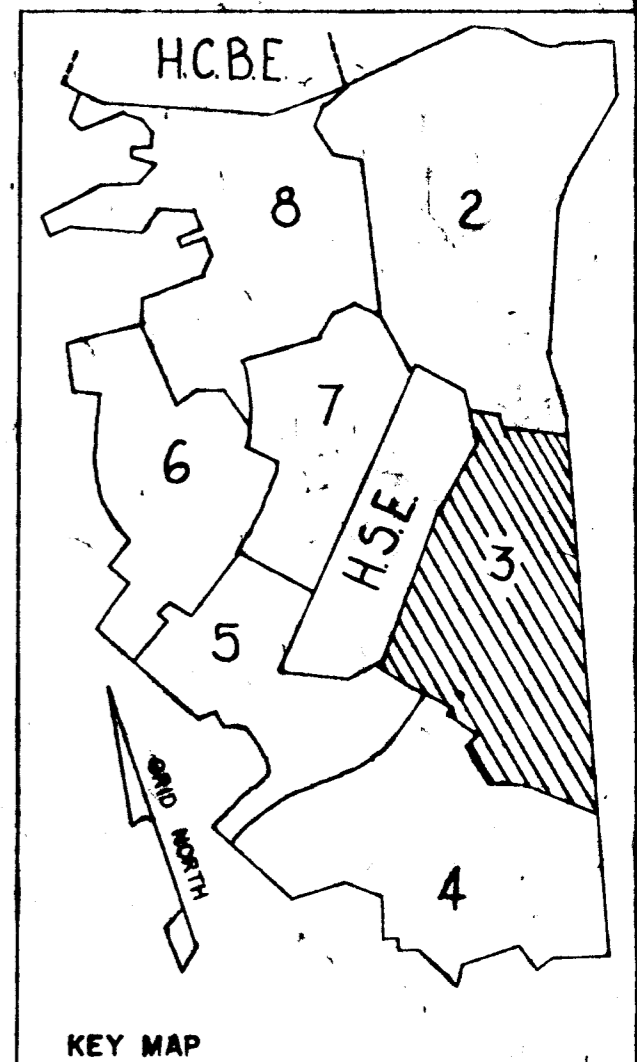
ALL COORDINATES ARE BASED ON THE MARYLAND STATE GRID SYSTEM

CURVE		DATA				
NOS.	RAD.	Δ	ARC	TAN CH	L.C.B.	
449-447	574.08	20° 38' 26"	206.81	104.54	205.69	S 57° 18' 15" W
442-446	634.08	20° 38' 26"	228.42	115.46	227.19	N 50° 18' 15" E
482-483	25.00	90° 00' 00"	39.27	25.00	35.35	N 04° 21' 34" W
480-481	25.00	90° 00' 00"	39.27	25.00	35.36	S 85° 38' 30" W
476-477	25.00	48° 11' 23"	21.03	11.18	20.41	S 73° 27' 15" E
478-479	25.00	48° 11' 23"	21.03	11.18	20.41	S 25° 15' 53" E
477-478	50.00	276° 27' 46"	241.19	—	66.67	S 40° 36' 25" W
436-438	50.00	250° 31' 43"	218.64	—	61.65	N 85° 00' 00" E
438-437	25.00	70° 31' 44"	30.77	17.68	28.87	S 24° 55' 57" W
439-440	25.00	82° 45' 40"	36.10	22.01	33.04	N 78° 27' 25" E
452-453	25.00	82° 45' 36"	39.19	24.92	35.30	S 10° 21' 22" W
431-432	25.00	90° 00' 00"	39.27	25.00	36.36	N 04° 21' 30" E
453-478	770.23	16° 20' 09"	219.00	110.57	218.90	S 37° 42' 57" E
418-423	370.00	28° 30' 07"	181.06	93.97	182.16	S 60° 08' 04" E
417-422	430.00	28° 30' 07"	213.90	109.21	211.70	S 60° 08' 04" E
419-424	474.68	18° 47' 00"	185.62	78.92	154.92	S 36° 25' 29" E
419-498	290.00	27° 15' 34"	112.67	57.05	111.96	N 55° 13' 45" W
499-500	25.00	91° 16' 42"	39.83	28.56	30.70	S 80° 16' 49" W
500-502	710.00	09° 55' 18"	122.90	61.63	122.79	S 40° 52' 47" W
572-577	710.00	00° 56' 18"	11.63	6.81	11.63	N 82° 18' 37" E
500-572	710.00	10° 51' 36"	134.58	67.49	134.37	S 47° 20' 58" W
589-591	50.00	23° 34' 42"	20.58	10.44	20.43	S 27° 34' 29" E
430-440	370.00	12° 20' 59"	79.78	40.03	79.59	S 43° 11' 08" E
444-498	748.12	08° 54' 28"	118.31	59.27	118.19	N 82° 05' 54" E
482-493	25.00	97° 50' 14"	42.89	28.68	37.69	N 00° 26' 27" W
782-783	25.00	90° 00' 00"	39.27	25.00	35.35	N 85° 38' 26" E



TOTALS

	ACREAGE
Lots this sheet	13.252
Arterial R.O.W.	3.105
Local R.O.W.	.830
Open Space	4.979
Total	22.166
Total Lots This Sheet (incl. open space)	62
Total Open Space lots	2



APPROVED: FOR PUBLIC WATER & PUBLIC SEWERAGE SYSTEMS, HOWARD COUNTY HEALTH DEPT.
 County Health Officer _____ Date _____
 APPROVED: HOWARD COUNTY PLANNING COMM.
 Chairman _____ 2-12-69 Date _____
 Director _____ 3-13-69 Date _____
 APPROVED: HOWARD COUNTY ROADS DEPARTMENT
 Roads Superintendent _____ Date _____
 APPROVED: HOWARD COUNTY METROPOLITAN COMM.
 Chief Engineer _____ 3-13-69 Date _____

SURVEYOR'S, ENGINEER'S and OWNER'S CERTIFICATES

The undersigned, owner of the property shown on this Plat, grants unto, (1) the Howard County Metropolitan Commission, its successors and assigns, the right to lay, construct and maintain water and sewer mains and laterals therefor in and under all road and street rights-of-way as shown hereon; (2) further, it adopts this plan of subdivision and reserves the fee simple title to the beds of the streets and/or roads hereon, except however, for one dollar consideration, it herewith grants the right and option to the Board of County Commissioners of Howard County to acquire (within a period of five years commencing with the date of recording of this plat among the Land Records of Howard County) the fee simple title to the beds of the streets and/or roads shown hereon, together with such adjacent land, if any, as may be shown on this plat as areas designated for the installation of street lighting facilities, reserving, however, unto Grantor, its successors and assigns, the right in perpetuity to lay, construct, enlarge, maintain and use cables and/or conduits for electrical transmission and other purposes beneath the surface of the lands subject to the rights granted herein to said Board of County Commissioners. The undersigned certifies that the subdivision plan shown hereon is correct as complying with the requirements of Final Development Plan Phase 5B recorded in Plat Book 16 folios 22 to 26, each inclusive, with all Open Space shown thereon to be used for drainage easements, if necessary, and the requirements of Article 17, Section 60 of the annotated code of Maryland concerning the making of this Plat and setting of markers have been complied with. The land shown hereon is a part of the land which by deed dated December 13, 1965 and recorded among the Land Records of Howard County, Maryland in Liber 463 folio 196 was granted and conveyed by C. Alton Ames to the Howard Research and Development Corporation.

PROFESSIONAL LAND SURVEYOR
 (By) Robert C. O'Brien 5457 Reg. No.
 COLUMBIA, MARYLAND

PROFESSIONAL ENGINEER
 (By) R. B. Williams 5388 Reg. No.
 FROME-PANDELO AND ASSOCIATES
 COLUMBIA, MARYLAND

OWNER
 (By) David W. Williams
 THE HOWARD RESEARCH AND DEVELOPMENT CORPORATION Auth. Agent
 VILLAGE OF OAKLAND MILLS, BALTIMORE, MARYLAND

RECORDED IN PLAT BOOK 17 FOLIO 3
 on March 14, 1969 among The
 Land Records of Howard County, Maryland.

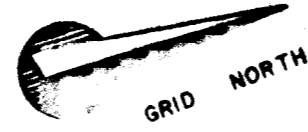
COLUMBIA
 VILLAGE of OAKLAND MILLS
 THUNDER HILL

SECTION 1
 AREA 4
 Sheet 3 of 8
 6th Election District of Howard County, Md.
 Scale: 1" = 100' Date: 10 OCT. 1968

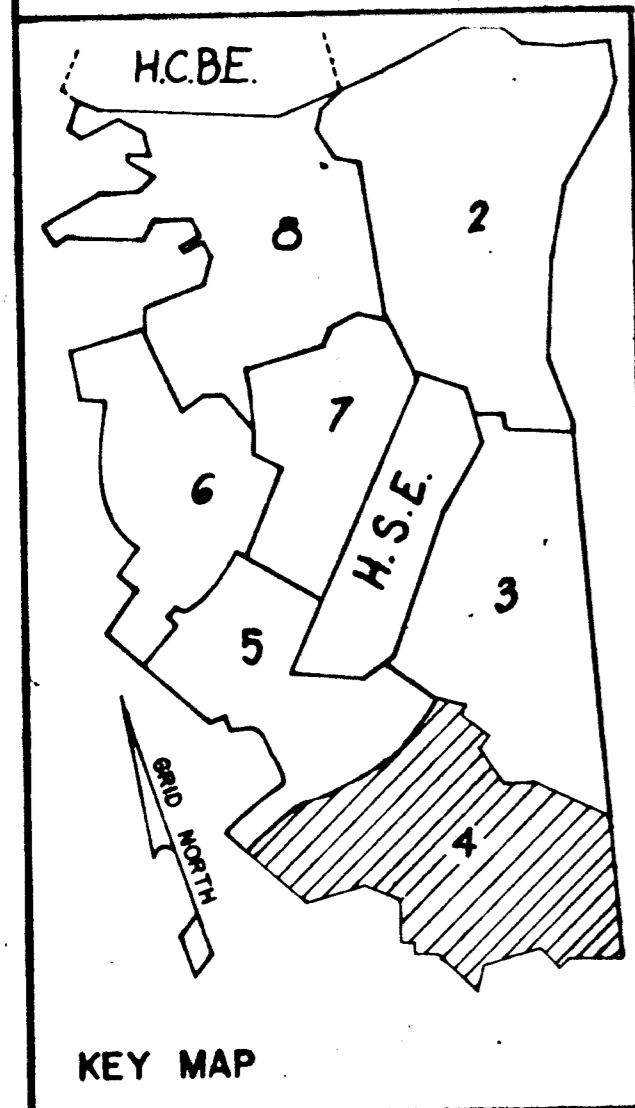
CURVE		DATA				
NOS.	RAD.	Δ	ARC	TAN	CH	L.C.B.
950	710.00	06°35'12"	69.23	34.64	69.20	S55°34'20"W
951	25.00	84°00'56"	36.72	22.57	33.51	S16°17'29"W
952	425.00	19°43'56"	146.37	73.92	145.65	S15°54'59"W
946	200.00	61°57'00"	216.25	120.06	205.87	S37°01'30"E
945	25.00	70°31'10"	30.77	17.67	28.86	N76°44'25"E
942	50.00	250°31'54"	218.63	---	81.65	S13°15'51"E
943-948	250.00	61°57'00"	270.31	150.07	257.33	N37°01'30"W
949-952	375.00	19°43'56"	129.15	65.22	128.51	S15°54'59"E
953-954	25.00	88°02'41"	38.42	24.16	34.75	N69°48'18"W
954-971	710.00	12°10'04"	150.78	75.68	150.50	S72°15'23"W
967-961	447.60	26°37'34"	206.01	105.92	206.14	S08°41'13"W
961-962	25.00	90°00'00"	39.27	25.00	35.36	S23°00'00"E
957-958	25.00	48°11'23"	21.03	11.18	20.43	N87°54'20"E
958-960	50.00	276°22'46"	241.18	---	66.67	S21°59'59"W
960-959	25.00	48°11'23"	21.03	11.18	20.41	N43°54'18"W
953-964	25.00	90°00'00"	39.27	25.00	35.36	N23°00'00"W
965-966	397.60	26°37'34"	184.77	94.08	183.11	N08°41'13"E
971-970	25.00	82°58'00"	36.20	22.11	33.12	S36°51'26"W
589-591	50.00	23°34'42"	20.58	10.42	20.43	S27°34'29"E

COLUMBIA

ALL COORDINATES ARE BASED ON THE MARYLAND STATE GRID SYSTEM



THE HOWARD RESEARCH AND DEVELOPMENT CORPORATION
LIBER 463 FOLIO 196

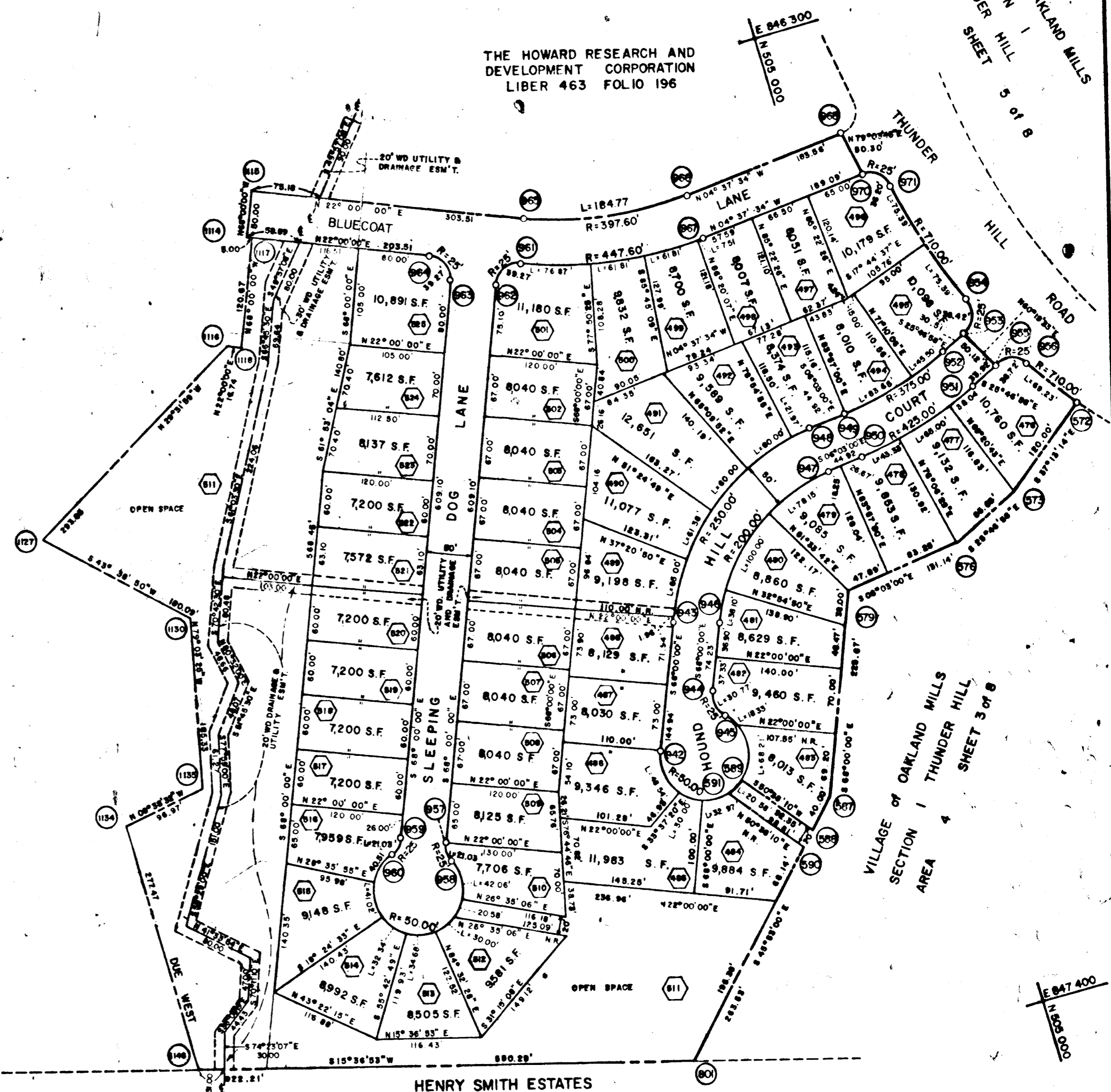


TABULATIONS

TOTALS	ACREAGE
Lots this sheet	= 9.932
R.O.W. Arterial	=
Local	= 2.541
Open Space	= 4.505
Total	= 16.978
Total Lots This Sheet (incl. open space)	= 50
Total open space lots	= 1

THE HOWARD RESEARCH AND DEVELOPMENT CORPORATION
LIBER 463 FOLIO 196

HENRY SMITH ESTATES
LIBER 156 FOLIO 256



HENRY SMITH ESTATES
LIBER 156 FOLIO 256

SURVEYOR'S, ENGINEER'S and OWNER'S CERTIFICATES

APPROVED: FOR PUBLIC WATER & PUBLIC SEWERAGE SYSTEMS, HOWARD COUNTY HEALTH DEPT.

[Signature] Date *3-13-69*
County Health Officer

APPROVED: HOWARD COUNTY PLANNING COMM.

[Signature] Date *2-12-69*
Chairman
[Signature] Date *3-13-69*
Director

APPROVED: HOWARD COUNTY ROADS DEPARTMENT

[Signature] Date *3-13-69*
Roads Superintendent

APPROVED: HOWARD COUNTY METROPOLITAN COMM.

[Signature] Date *3-13-69*
Chief Engineer

The undersigned, owner of the property shown on this Plat, grants unto, (1) the Howard County Metropolitan Commission, its successors and assigns, the right to lay, construct and maintain water and sewer mains and laterals therefor in and under all road and street rights-of-way as shown hereon; (2) further, it adopts this plan of subdivision and reserves the fee simple title to the beds of the streets and/or roads hereon, except however, for one dollar consideration, it herewith grants the right and option to the Board of County Commissioners of Howard County to acquire (within a period of five years commencing with the date of recording of this plat among the Land Records of Howard County) the fee simple title to the beds of the streets and/or roads shown hereon, together with such adjacent land, if any, as may be shown on this plat as areas designated for the installation of street lighting facilities, reserving, however, unto Grantor, its successors and assigns, the right in perpetuity to lay, construct, enlarge, maintain and use cables and/or conduits for electrical transmission and other purposes beneath the surface of the lands subject to the rights granted herein to said Board of County Commissioners. The undersigned certifies that the subdivision plan shown hereon is correct as complying with the requirements of Final Development Plan Phase 58 recorded in Plat Book 16 folios 22 to 26, each inclusive, with all Open Space shown thereon to be used for drainage easements, if necessary, and the requirements of Article 17, Section 60 of the annotated code of Maryland concerning the making of this Plat and setting of markers have been complied with. The land shown hereon is a part of the land which by deed dated December 13, 1966 and recorded among the Land Records of Howard County, Maryland in Liber 463 folio 196 was granted and conveyed by C. Aileen Ames to the Howard Research and Development Corporation.

PROFESSIONAL LAND SURVEYOR
(By) *[Signature]* 5487
BROOME-PANDULLO AND ASSOCIATES Reg. No.
COLUMBIA, MARYLAND

PROFESSIONAL ENGINEER
(By) *[Signature]* 5238
BROOME-PANDULLO AND ASSOCIATES Reg. No.
COLUMBIA, MARYLAND

OWNER
(By) *[Signature]*
THE HOWARD RESEARCH AND DEVELOPMENT CORPORATION Auth. Agent
VILLAGE OF CROSS KEYS, BALTIMORE, MARYLAND

RECORDED IN PLAT BOOK 17 FOLIO 4
on March 14, 1969 among The
Land Records of Howard County, Maryland.

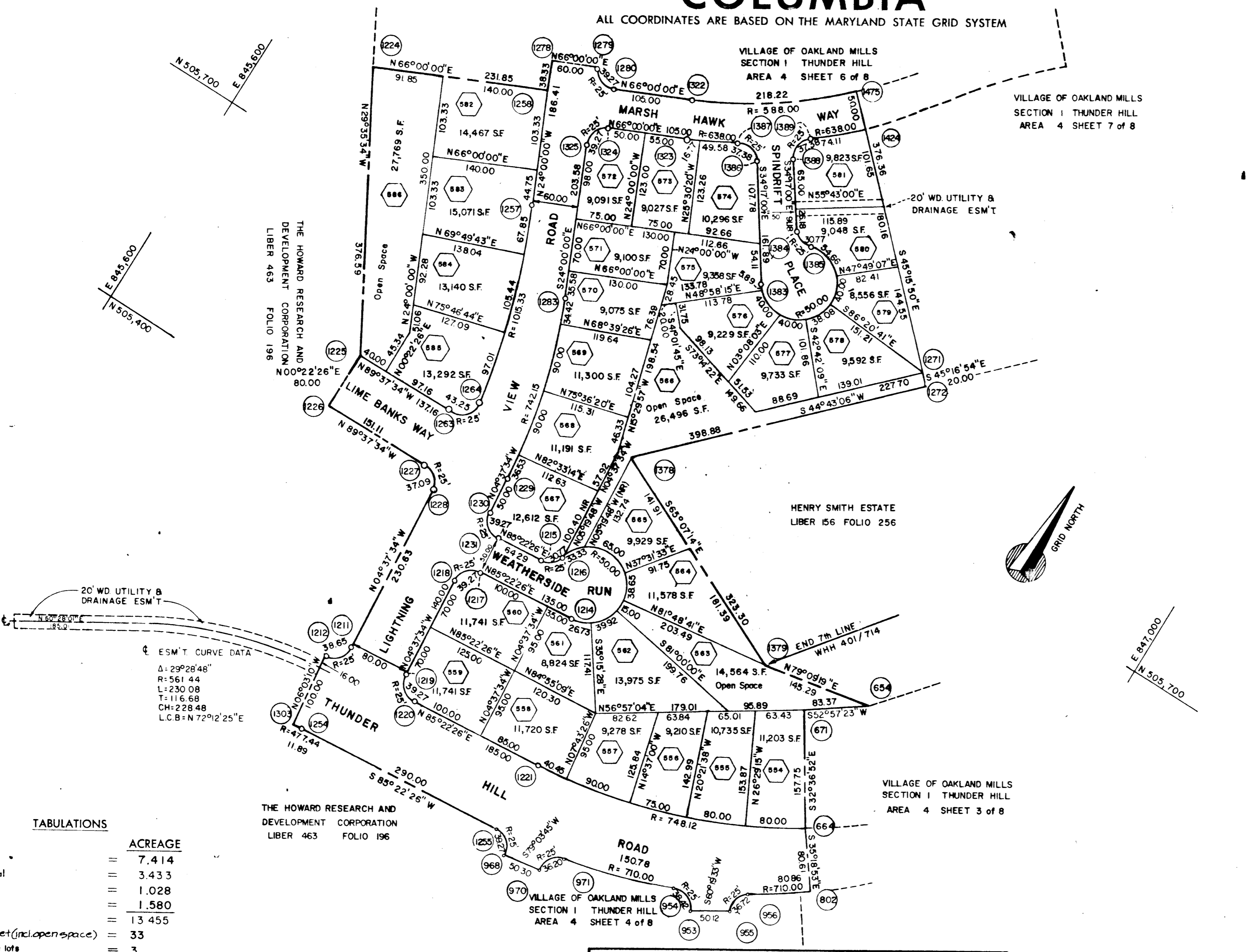
COLUMBIA
VILLAGE OF OAKLAND MILLS
THUNDER HILL

SECTION 1
AREA 4
Sheet 4 of 8
6th Election District of Howard County, Md.
Scale: 1" = 100' Date: 10 OCT. 1968

COLUMBIA

ALL COORDINATES ARE BASED ON THE MARYLAND STATE GRID SYSTEM

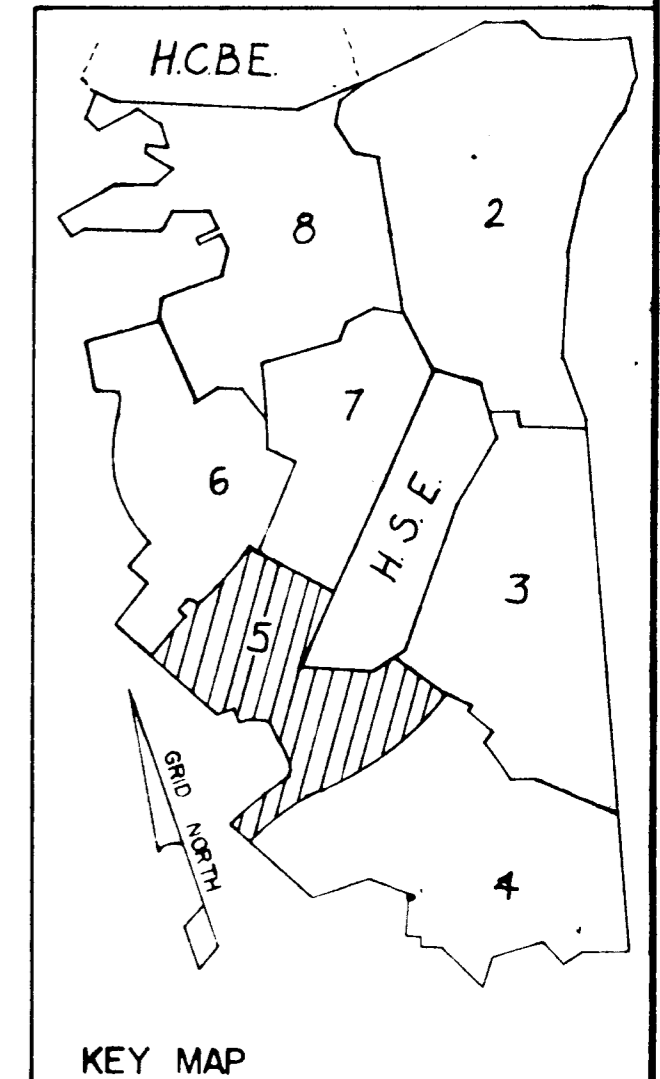
CURVE		DATA				
NOS.	RAD.	Δ	ARC	TAN	CH.	L.C.B.
1475 - 1322	588.00	21° 15' 50"	218.22	110.38	216.97	S 55° 22' 06" W
1280 - 1279	25.00	90° 00' 00"	39.27	25.00	35.36	N 69° 00' 00" W
1257 - 1264	1015.33	15° 15' 12"	270.30	135.96	269.51	S 16° 22' 24" E
1264 - 1263	25.00	99° 07' 14"	43.25	29.33	38.05	S 40° 48' 49" W
1227 - 1228	25.00	85° 00' 00"	37.09	22.91	33.78	S 47° 07' 34" E
1211 - 1212	25.00	88° 34' 24"	38.65	24.39	34.91	S 39° 39' 38" W
1303 - 1254	477.44	01° 25' 36"	11.89	5.94	11.89	S 84° 39' 38" W
1255 - 968	25.00	90° 00' 00"	39.27	25.00	35.36	S 49° 37' 34" E
970 - 971	25.00	82° 58' 00"	26.20	22.11	33.12	N 36° 51' 26" E
971 - 954	710.00	12° 10' 04"	150.78	75.68	150.50	N 72° 15' 23" E
954 - 953	25.00	88° 02' 41"	38.42	24.16	34.75	S 69° 48' 18" E
955 - 956	25.00	84° 08' 58"	26.72	22.57	33.51	N 16° 17' 29" E
956 - 802	710.00	06° 31' 34"	80.86	40.48	80.83	N 55° 06' 13" E
664 - 1221	748.12	27° 59' 18"	365.45	186.45	361.83	N 7° 22' 47" E
1220 - 1219	25.00	90° 00' 00"	39.27	25.00	35.35	N 49° 37' 34" W
1218 - 1217	25.00	90° 00' 00"	39.27	25.00	35.35	N 40° 22' 26" E
1214 - 1216	50.00	250° 31' 43"	218.63	—	81.65	N 39° 53' 27" W
1216 - 1215	25.00	70° 31' 44"	30.77	17.68	28.87	S 50° 06' 34" W
1231 - 1230	25.00	90° 00' 00"	39.27	25.00	35.35	N 49° 37' 34" W
1229 - 1243	742.15	19° 22' 26"	250.96	126.68	249.75	N 14° 18' 47" E
1325 - 1324	25.00	90° 00' 00"	39.27	25.00	35.36	N 21° 00' 00" E
1323 - 1387	638.00	05° 57' 30"	66.35	33.20	66.32	N 63° 01' 15" E
1387 - 1386	25.00	85° 40' 30"	37.38	23.18	34.00	S 77° 07' 15" E
1383 - 1385	50.00	250° 31' 43"	218.63	—	81.65	N 20° 27' 08" E
1385 - 1384	25.00	70° 31' 44"	30.77	17.68	28.87	N 69° 32' 52" W
1388 - 1389	25.00	85° 40' 26"	37.38	23.18	34.00	N 08° 33' 13" E
1389 - 1424	638.00	06° 39' 20"	74.11	37.10	74.07	N 48° 03' 52" E



ESM'T CURVE DATA
 Δ: 29°28'48"
 R: 561.44
 L: 230.08
 T: 116.68
 CH: 228.48
 L.C.B.: N 72°12'25" E

TABULATIONS

	ACREAGE
Lots this sheet	= 7.414
R.O.W. Arterial	= 3.433
R.O.W. Local	= 1.028
Open Space	= 1.580
Total	= 13.455
Total Lots This Sheet (incl. open space)	= 33
Total open space lots	= 3



APPROVED: FOR PUBLIC WATER & PUBLIC SEWERAGE SYSTEMS, HOWARD COUNTY HEALTH DEPT.
 County Health Officer: _____ Date: _____
 APPROVED: HOWARD COUNTY PLANNING COMM.
 Chairman: _____ Date: 2-12-69
 Director: _____ Date: 3-13-69
 APPROVED: HOWARD COUNTY ROADS DEPARTMENT
 Roads Superintendent: _____ Date: 3-12-69
 APPROVED: HOWARD COUNTY METROPOLITAN COMM.
 Chief Engineer: _____ Date: 3-13-69

SURVEYOR'S, ENGINEER'S and OWNER'S CERTIFICATES

The undersigned, owner of the property shown on this Plat, grants unto, (1) the Howard County Metropolitan Commission, its successors and assigns, the right to lay, construct and maintain water and sewer mains and laterals therefor in and under all road and street rights-of-way as shown hereon; (2) further, it adopts this plan of subdivision and reserves the fee simple title to the beds of the streets and/or roads hereon, except however, for one dollar consideration, it herewith grants the right and option to the Board of County Commissioners of Howard County to acquire (within a period of five years commencing with the date of recording of this plat among the Land Records of Howard County) the fee simple title to the beds of the streets and/or roads shown hereon, together with such adjacent land, if any, as may be shown on this plat as areas designated for the installation of street lighting facilities, reserving, however, unto Grantor, its successors and assigns, the right in perpetuity to lay, construct, enlarge, maintain and use cables and/or conduits for electrical transmission and other purposes beneath the surface of the lands subject to the rights granted herein to said Board of County Commissioners. The undersigned certifies that the subdivision plan shown hereon is correct as complying with the requirements of Final Development Plan Phase 5B recorded in Plat Book 16 folios 88 to 96, each inclusive, with all Open Space shown thereon to be used for drainage easements, if necessary, and the requirements of Article 17, Section 60 of the annotated code of Maryland concerning the making of this Plat and setting of markers have been complied with. The land shown hereon is a part of the land which by deed dated December 13, 1966 and recorded among the Land Records of Howard County, Maryland in Liber 463 folio 196 was granted and conveyed by C. Aileen Ames to the Howard Research and Development Corporation.

PROFESSIONAL LAND SURVEYOR (By) <u>Robert G. Williams</u> 5467 BROWNE-PANDULLO AND ASSOCIATES COLUMBIA, MARYLAND	PROFESSIONAL ENGINEER (By) <u>Paul J. Gorman</u> 5238 BROWNE-PANDULLO AND ASSOCIATES COLUMBIA, MARYLAND	OWNER (By) <u>C. Aileen Ames</u> THE HOWARD RESEARCH AND DEVELOPMENT CORPORATION VILLAGE OF CROSS KEYS, BALTIMORE, MARYLAND
--	---	---

RECORDED IN PLAT BOOK 17 FOLIO 5
 on March 14, 1969 among The
 Land Records of Howard County, Maryland.

COLUMBIA
 VILLAGE OF OAKLAND MILLS
 THUNDER HILL

SECTION 1
 AREA 4
 Sheet 5 of 8
 6th Election District of Howard County, Md.
 Scale: 1" = 100' Date: 10 OCT. 1968

COLUMBIA

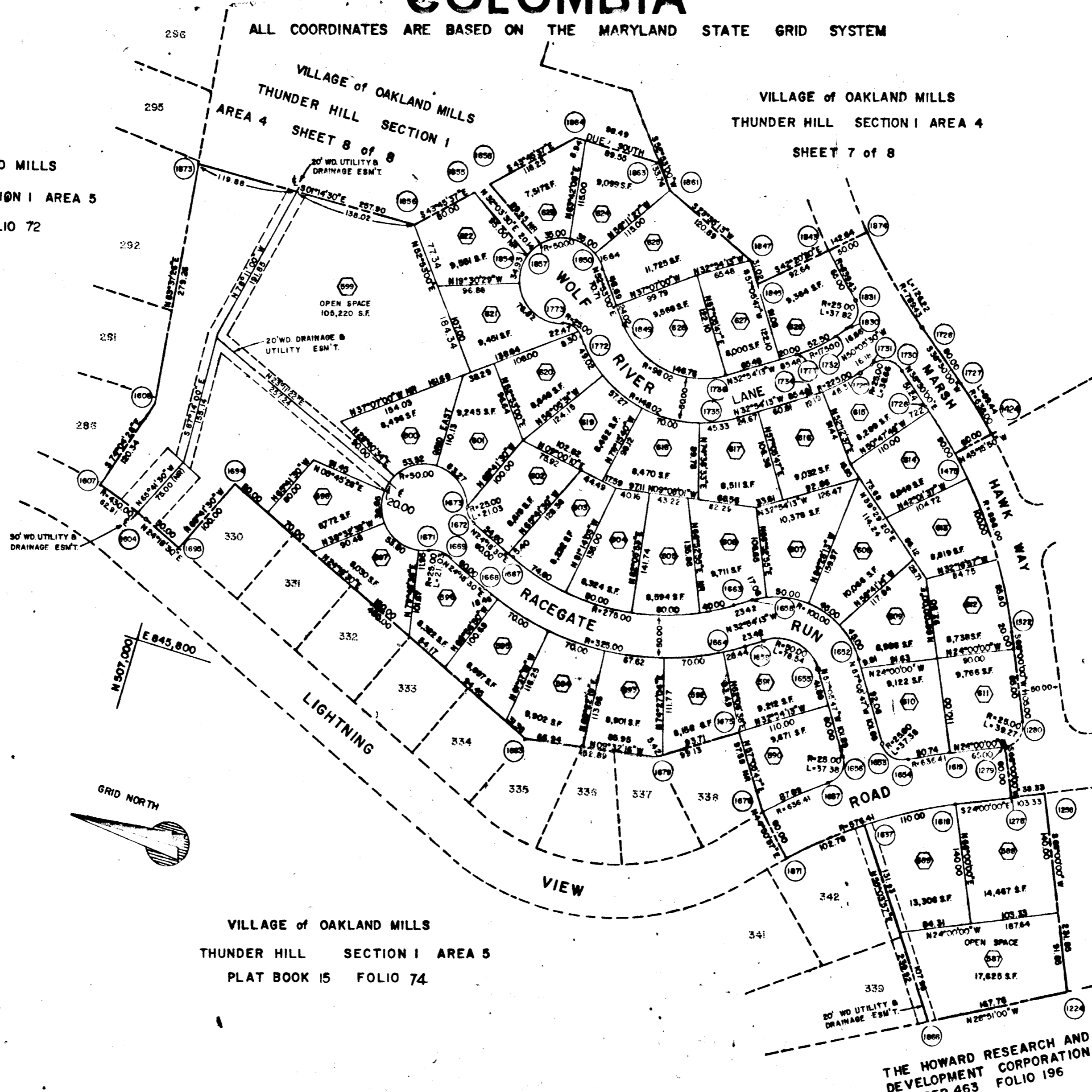
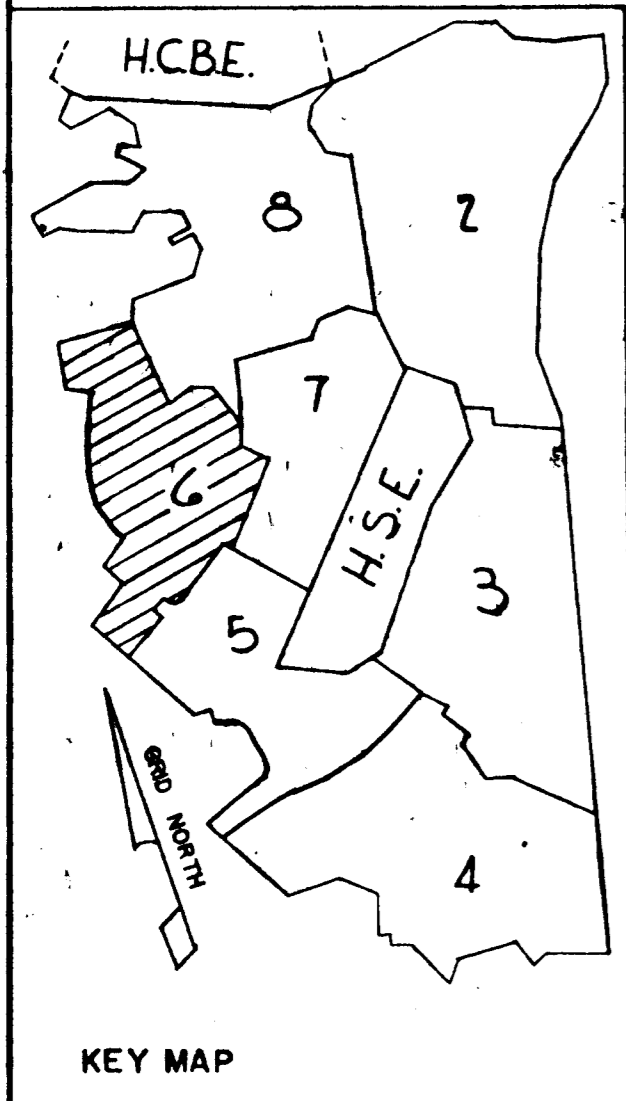
ALL COORDINATES ARE BASED ON THE MARYLAND STATE GRID SYSTEM

CURVE		DATA				
NOS	RAD.	Δ	ARC	TAN	CH	L C B
1871 - 1618	576.41	21°09'03"	212.78	107.62	211.58	S 34° 34' 31" E
1871 - 1637	576.41	10°13'00"	102.78	51.53	102.64	S 40° 03' 00" E
1637 - 1618	576.41	10°56'03"	110.00	55.17	109.83	S 29° 28' 02" E
1279 - 1280	25.00	90°00'00"	39.27	25.00	35.36	S 69° 00' 00" E
1322 - 1475	588.00	21°15'50"	218.22	110.38	216.97	N 55° 22' 00" E
1475 - 1726	588.00	06°14'10"	64.00	32.03	63.97	N 41° 37' 00" E
1822 - 1726	588.00	27°30'00"	282.22	143.88	279.77	N 52° 15' 00" E
1730 - 1731	25.00	86°35'30"	38.66	24.39	34.92	N 05° 47' 45" W
1729 - 1734	225.00	17° 11' 17"	67.50	34.00	67.24	N 41° 23' 52" W
1735 - 1772	148.02	85° 47' 13"	221.62	137.51	201.49	N 09° 53' 24" E
1772 - 1773	25.00	70° 31' 44"	30.77	17.68	28.87	S 17° 37' 06" W
1773 - 1850	50.00	250° 31' 43"	218.63	—	81.65	S 52° 54' 36" E
1849 - 1736	98.02	85° 47' 13"	146.76	91.06	133.43	S 09° 53' 24" W
1733 - 1732	175.00	17° 11' 17"	52.50	26.45	52.30	S 41° 23' 52" E
1830 - 1831	25.00	86° 41' 06"	37.82	23.99	34.32	N 86° 34' 00" E
1831 - 1843	639.43	04° 26' 13"	65.00	32.52	64.99	N 85° 26' 33" E
1874 - 1728	789.43	09° 09' 40"	126.22	63.26	126.08	S 43° 04' 50" W
1854 - 1887	50.00	23° 04' 21"	20.14	10.21	20.00	N 57° 06' 20" W
1727 - 1424	638.00	06° 14' 10"	69.44	34.75	69.41	S 41° 37' 00" W
1876 - 1657	636.41	07° 54' 47"	87.89	44.01	87.81	S 41° 11' 42" E
1857 - 1656	25.00	85° 39' 49"	37.38	23.18	33.99	S 80° 09' 19" E
1865 - 1659	50.00	90° 00' 00"	78.54	50.00	70.71	N 12° 05' 47" E
1664 - 1668	325.00	57° 12' 43"	324.52	177.24	311.21	N 04° 17' 52" W
1669 - 1671	25.00	48° 11' 23"	21.03	11.18	20.41	N 00° 12' 49" E
1671 - 1673	50.00	276° 22' 46"	241.19	—	66.67	S 69° 41' 30" E
1673 - 1672	25.00	48° 11' 23"	21.03	11.18	20.41	S 48° 24' 12" W
1667 - 1663	275.00	57° 12' 43"	274.60	149.97	263.33	S 04° 17' 52" E
1658 - 1652	100.00	90° 00' 00"	157.08	100.00	141.42	S 12° 05' 47" W
1653 - 1654	25.00	85° 39' 52"	37.38	23.18	33.99	S 14° 15' 51" E
1654 - 1619	636.41	04° 34' 06"	50.74	25.38	50.72	S 26° 17' 03" E
1604 - 1607	4300.00	08° 22' 58"	62.91	31.51	62.86	N 20° 07' 00" E

VILLAGE of OAKLAND MILLS
THUNDER HILL SECTION I AREA 5
PLAT BOOK 15 FOLIO 72

VILLAGE of OAKLAND MILLS
THUNDER HILL SECTION I AREA 4
SHEET 7 of 8

VILLAGE of OAKLAND MILLS
THUNDER HILL SECTION I AREA 4
SHEET 5 of 8



VILLAGE of OAKLAND MILLS
THUNDER HILL SECTION I AREA 5
PLAT BOOK 15 FOLIO 74

THE HOWARD RESEARCH AND
DEVELOPMENT CORPORATION
LIBER 463 FOLIO 196

TABULATIONS

TOTALS	ACREAGE
LOTS THIS SHEET	8.472
R.O.W. Arterial	.430
Local	1.849
Open Space	2.820
This Plat	13.571

Total Lots This Sheet (Incl. open space) = 42 Total open space lots = 2

SURVEYOR'S, ENGINEER'S and OWNER'S CERTIFICATES

APPROVED FOR PUBLIC WATER & PUBLIC SEWERAGE SYSTEMS, HOWARD COUNTY HEALTH DEPT.

County Health Officer *John J. [Signature]* Date *3-13-69*

APPROVED: HOWARD COUNTY PLANNING COMM.

Chairman *[Signature]* Date *3-13-69*

Director *[Signature]* Date *2-12-69*

APPROVED: HOWARD COUNTY ROADS DEPARTMENT

Roads Superintendent *[Signature]* Date *2-12-69*

APPROVED: HOWARD COUNTY METROPOLITAN COMM.

Chief Engineer *[Signature]* Date *2-13-69*

The undersigned, owner of the property shown on this Plat, grants unto (1) the Howard County Metropolitan Commission, its successors and assigns, the right to lay, construct and maintain water and sewer mains and laterals therefor in and under all road and street rights-of-way as shown hereon; (2) further, it adopts this plan of subdivision and reserves the fee simple title to the beds of the streets and/or roads hereon, except however, for one dollar consideration, it herewith grants the right and option to the Board of County Commissioners of Howard County to acquire (within a period of five years commencing with the date of recording of this plat among the Land Records of Howard County) the fee simple title to the beds of the streets and/or roads shown hereon, together with such adjacent land, if any, as may be shown on this plat as areas designated for the installation of street lighting facilities, reserving, however, unto Grantor, its successors and assigns, the right in perpetuity to lay, construct, enlarge, maintain and use cables and/or conduits for electrical transmission and other purposes beneath the surface of the lands subject to the rights granted herein to said Board of County Commissioners. The undersigned certify that the subdivision plan shown hereon is correct as complying with the requirements of Final Development Plan Phase 5B recorded in Plat Book 16, folios 20 to 26, each inclusive, with all Open Space shown thereon to be used for drainage easements, if necessary, and the requirements of Article 17, Section 60 of the annotated code of Maryland concerning the making of this Plat and setting of markers have been complied with. The land shown hereon is a part of the land which by deed dated December 13, 1966 and recorded among the Land Records of Howard County, Maryland in Liber 463 folio 196 was granted and conveyed by C. Aileen Ames to the Howard Research and Development Corporation.

PROFESSIONAL LAND SURVEYOR
(By) *[Signature]* 5457
BROWN - FANDULLO & ASSOCIATES, Inc. N^o
COLUMBIA, MARYLAND

PROFESSIONAL ENGINEER
(By) *[Signature]* 5238
BROWN - FANDULLO & ASSOCIATES, Inc. N^o
COLUMBIA, MARYLAND

OWNER
(By) *[Signature]*
THE HOWARD RESEARCH AND DEVELOPMENT CORPORATION
VILLAGE OF CROSS KEYS, BALTIMORE, MARYLAND
Auth. Agent

RECORDED IN PLAT BOOK 17 FOLIO 6
on March 14, 1969 among The
Land Records of Howard County, Maryland.

COLUMBIA
VILLAGE OF OAKLAND MILLS
THUNDER HILL

SECTION 1
AREA 4
Sheet 6 of 8
8th Election District of Howard County, Md.
Scale: 1" = 100' Date: 10 OCT. 1968

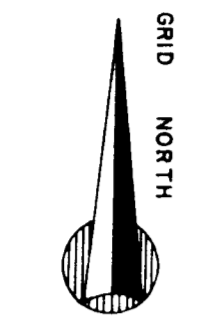
COLUMBIA

ALL COORDINATES ARE BASED ON THE MARYLAND STATE GRID SYSTEM

CURVE		DATA				
NOS.	RAD.	Δ	ARC.	TAN.	CH.	L.C.B.
2111 - 2112	25.00	84°05'00"	36.69	22.54	33.48	N43°32'30"W
2110 - 2113	190.00	47°50'00"	158.62	84.26	154.06	N70°30'00"E
2114 - 2142	50.00	250°31'43"	218.63	—	81.65	S08°09'09"E
2142 - 2141	25.00	70°31'44"	30.77	17.68	28.87	S81°50'52"W
2143 - 2072	240.00	47°50'00"	200.36	106.44	194.60	S70°30'00"W
2073 - 2074	25.00	82°35'17"	36.04	21.96	33.00	S53°07'21"W
2074 - 2075	362.59	19°40'17"	124.49	62.86	123.88	S21°39'51"W
2108 - 2119	312.59	33°00'00"	180.04	92.59	177.56	S15°00'00"W
2058 - 2057	25.00	79°08'13"	34.53	20.66	31.85	S05°42'48"E
2050 - 2049	50.00	250°31'43"	218.63	—	81.65	S79°58'58"W
2049 - 2081	25.00	70°31'44"	30.77	17.68	28.87	N10°01'02"W
2059 - 2060	25.00	91°04'48"	39.74	25.48	35.69	S89°10'44"W
1728 - 1874	789.44	09°09'40"	126.22	63.25	126.09	N43°04'50"W
279 - 281	50.00	17°11'19"	15.00	7.56	14.94	S04°05'36"W
2060 - 2076	564.55	08°51'40"	87.31	43.74	87.22	S48°04'10"W
2076 - 1874	789.44	04°50'20"	66.67	33.36	66.65	S50°04'50"W
2076 - 1728	789.44	14°00'00"	192.90	96.93	192.42	N45°04'50"E
1727 - 1424	638.00	06°14'10"	69.44	34.75	69.41	S41°37'05"W
1843 - 2120	839.44	04°50'20"	70.89	35.47	70.87	N50°04'50"E
2120 - 2119	514.55	21°00'00"	188.59	95.37	187.54	N42°00'00"E

VILLAGE OF OAKLAND MILLS
SECTION I THUNDER HILL
AREA 4 SHEET 8 of 8

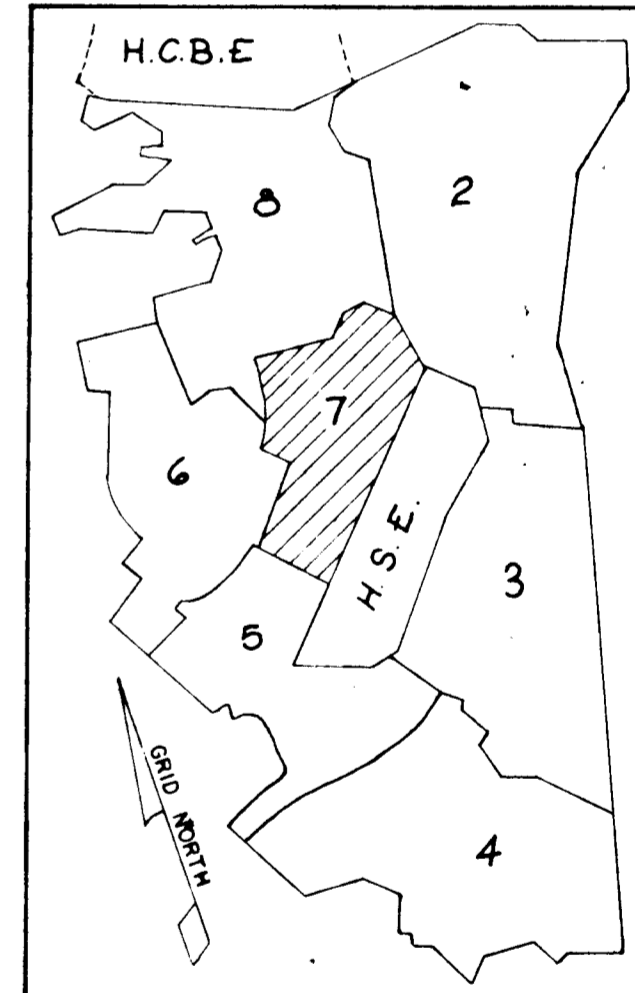
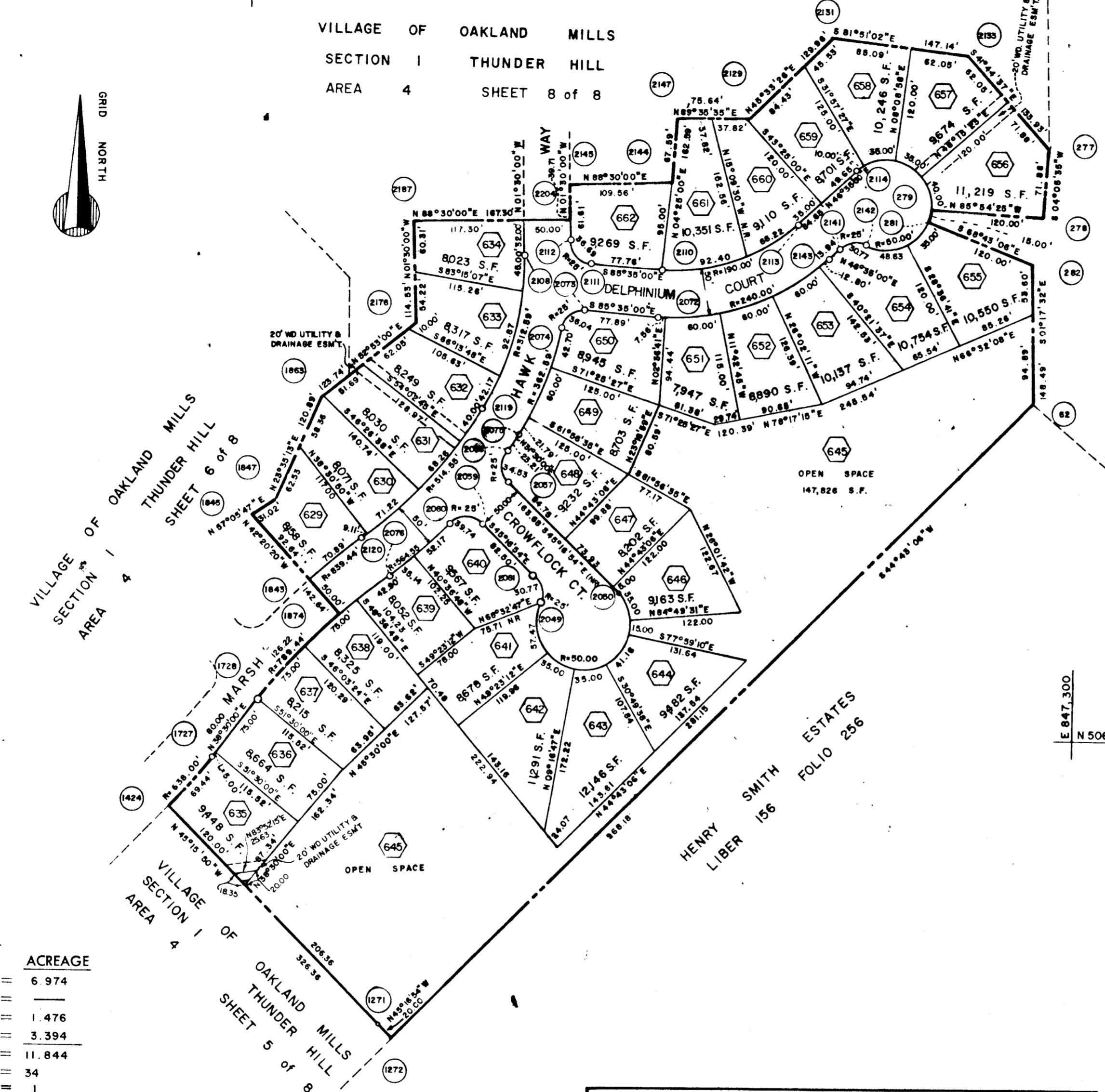
VILLAGE OF OAKLAND MILLS
SECTION I THUNDER HILL
AREA 4 SHEET 2 of 8



E 846,400
N 507,000

E 846,000
N 506,200

E 847,300
N 506,200



TOTALS

ACREAGE	
Lots this sheet	6.974
Arterial R.O.W.	—
Local R.O.W.	1.476
Open Space	3.394
Total	11.844
Total Lots This Sheet (incl. open space)	34
Total open space lots	1

APPROVED: FOR PUBLIC WATER & PUBLIC SEWERAGE SYSTEMS, HOWARD COUNTY HEALTH DEPT.

County Health Officer _____ Date _____

APPROVED: HOWARD COUNTY PLANNING COMM.

Chairman Thomas J. Davis 2-12-69 Date _____

Director _____ Date _____

APPROVED: HOWARD COUNTY ROADS DEPARTMENT

Roads Superintendent _____ Date 3-13-69

APPROVED: HOWARD COUNTY METROPOLITAN COMM.

Chief Engineer _____ Date 3-12-69

SURVEYOR'S, ENGINEER'S and OWNER'S CERTIFICATES

The undersigned, owner of the property shown on this Plat, grants unto, (1) the Howard County Metropolitan Commission, its successors and assigns, the right to lay, construct and maintain water and sewer mains and laterals therefor in and under all road and street rights-of-way as shown hereon; (2) further, it adopts this plan of subdivision and reserves the fee simple title to the beds of the streets and/or roads hereon, except however, for one dollar consideration, it herewith grants the right and option to the Board of County Commissioners of Howard County to acquire (within a period of five years commencing with the date of recording of this plat among the Land Records of Howard County) the fee simple title to the beds of the streets and/or roads shown hereon, together with such adjacent land, if any, as may be shown on this plat as areas designated for the installation of street lighting facilities, reserving, however, unto Grantor, its successors and assigns, the right in perpetuity to lay, construct, enlarge, maintain and use cables and/or conduits for electrical transmission and other purposes beneath the surface of the lands subject to the rights granted herein to said Board of County Commissioners. The undersigned certifies that the subdivision plan shown hereon is correct as complying with the requirements of Final Development Plan Phase 58 recorded in Plat Book 16 folios 88 to 96, each inclusive, with all Open Space shown thereon to be used for drainage easements, if necessary, and the requirements of Article 17, Section 60 of the annotated code of Maryland concerning the making of this Plat and setting of markers have been complied with. The land shown hereon is a part of the land which by deed dated December 13, 1966 and recorded among the Land Records of Howard County, Maryland in Liber 463 folio 196 was granted and conveyed by C. Aileen Ames to the Howard Research and Development Corporation.

PROFESSIONAL LAND SURVEYOR (By) Robert C. Liberman 5467 Reg. No. BROWNE - PANDULLO AND ASSOCIATES COLUMBIA, MARYLAND

PROFESSIONAL ENGINEER (By) Robert C. Liberman 8238 Reg. No. BROWNE - PANDULLO AND ASSOCIATES COLUMBIA, MARYLAND

OWNER (By) David B. Liberman THE HOWARD RESEARCH AND DEVELOPMENT CORPORATION VILLAGE OF CROSS KEYS, BALTIMORE, MARYLAND Auth. Agent

RECORDED IN PLAT BOOK 17 FOLIO 7
on March 14, 1969 among The
Land Records of Howard County, Maryland.

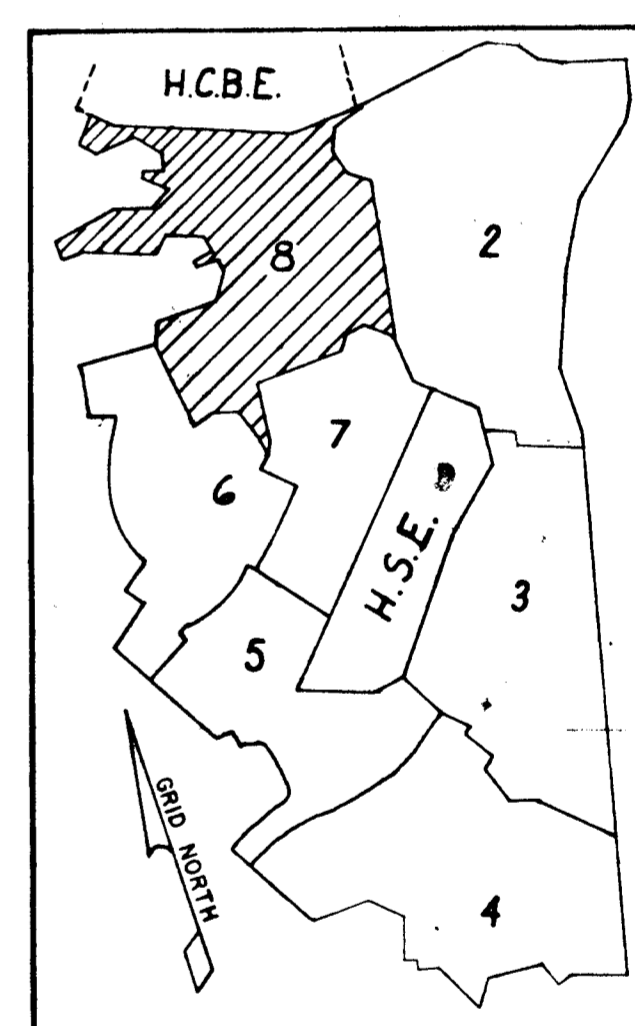
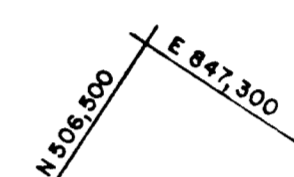
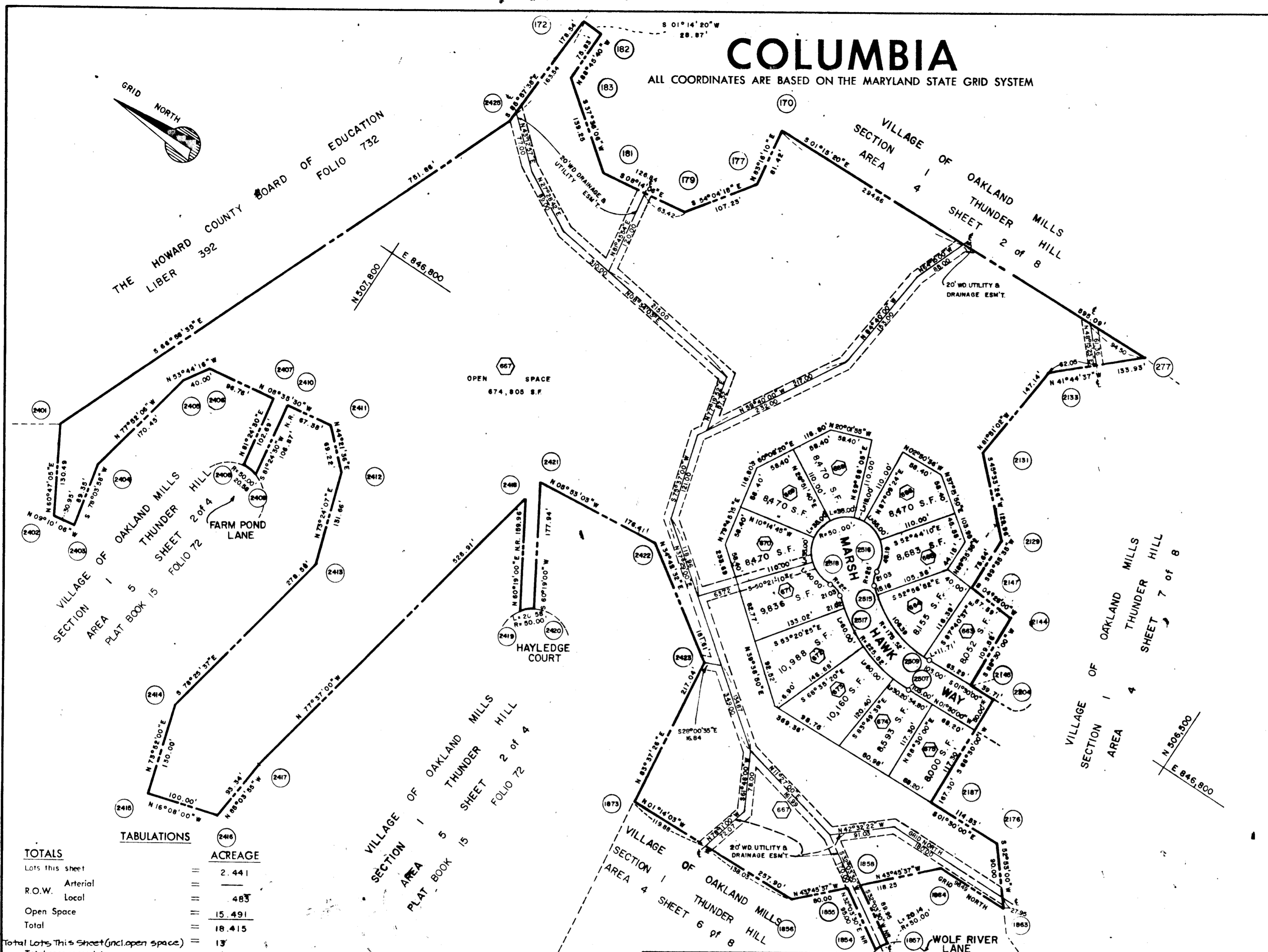
COLUMBIA
VILLAGE OF OAKLAND MILLS
THUNDER HILL

SECTION 1
AREA 4
Sheet 7 of 8
6 th. Election District of Howard County, Md.
Scale: 1" = 100' Date: 10 OCT. 1968

COLUMBIA

ALL COORDINATES ARE BASED ON THE MARYLAND STATE GRID SYSTEM

NOR.	CURVE				DATA	
	RAD.	Δ	ARC.	TAN	CH.	L.C.B.
2516 - 2518	50.00	276°22'46"	241.19	—	66.67	N 48°00'00" W
2515 - 2516	25.00	48°11'23"	21.03	11.18	20.41	N 66°05'41" W
2517 - 2518	25.00	48°11'23"	21.03	11.18	20.41	N 17°54'19" E
2507 - 2517	225.52	43°30'00"	171.22	89.97	167.14	N 20°15'00" E
2509 - 2515	175.52	43°30'00"	133.26	70.03	130.08	N 20°15'00" E
1857 - 1854	50.00	23°04'27"	20.14	10.21	20.00	N 57°56'26" W
2419 - 2420	50.00	23°34'43"	20.58	10.44	20.45	N 41°28'21" W
2409 - 2408	50.00	23°34'43"	20.58	10.44	20.45	N 03°11'51" E



TOTALS	ACREAGE
Lots this sheet	2.441
R.O.W. Arterial	—
Local	483
Open Space	15.491
Total	18.415
Total Lots This Sheet (incl. open space)	13
Total open space lots	1

APPROVED: FOR PUBLIC WATER & PUBLIC SEWERAGE SYSTEMS, HOWARD COUNTY HEALTH DEPT.

County Health Officer _____ Date _____

APPROVED: HOWARD COUNTY PLANNING COMM.

Chairman _____ Date _____

Director _____ Date 3-13-69

APPROVED: HOWARD COUNTY ROADS DEPARTMENT

Roads Superintendent _____ Date 3-13-69

APPROVED: HOWARD COUNTY METROPOLITAN COMM.

Chief Engineer _____ Date 3-13-69

The undersigned, owner of the property shown on this Plat, grants unto, (1) the Howard County Metropolitan Commission, its successors and assigns, the right to lay, construct and maintain water and sewer mains and laterals therefor in and under all road and street rights-of-way as shown, hereon; (2) further, it adopts this plan of subdivision and reserves the fee simple title to the beds of the streets and/or roads hereon, except however, for one dollar consideration, it herewith grants the right and option to the Board of County Commissioners of Howard County to acquire (within a period of five years commencing with the date of recording of this plat among the Land Records of Howard County) the fee simple title to the beds of the streets and/or roads shown hereon, together with such adjacent land, if any, as may be shown on this plat as areas designated for the installation of street lighting facilities, reserving, however, unto Grantor, its successors and assigns, the right in perpetuity to lay, construct, enlarge, maintain and use cables and/or conduits for electrical transmission and other purposes beneath the surface of the lands subject to the rights granted herein to said Board of County Commissioners. The undersigned certify that the subdivision plan shown hereon is correct as complying with the requirements of Final Development Plan Phase 5B recorded in Plat Book 16 folios 88 to 96, each inclusive, with all Open Space shown thereon to be used for drainage easements, if necessary, and the requirements of Article 17, Section 60 of the annotated code of Maryland concerning the making of this Plat and setting of markers have been complied with. The land shown hereon is a part of the land which by deed dated December 13, 1966 and recorded among the Land Records of Howard County, Maryland in Liber 463 folio 196 was granted and conveyed by C. Aileen Ames to the Howard Research and Development Corporation.

PROFESSIONAL LAND SURVEYOR (By) _____ 5467
BROWNE - PANDULO AND ASSOCIATES Reg. No. _____
COLUMBIA, MARYLAND

PROFESSIONAL ENGINEER (By) _____ 5238
BROWNE - PANDULO AND ASSOCIATES Reg. No. _____
COLUMBIA, MARYLAND

OWNER (By) _____
Auth. Agent
THE HOWARD RESEARCH AND DEVELOPMENT CORPORATION
VILLAGE OF CROSS KEYS, BALTIMORE, MARYLAND

RECORDED IN PLAT BOOK 17 FOLIO 8
on March 14, 1969 among The
Land Records of Howard County, Maryland.

COLUMBIA
VILLAGE OF OAKLAND MILLS
THUNDER HILL

SECTION 1
AREA 4
Sheet 8 of 8
6th. Election District of Howard County, Md.
Scale: 1" = 100' Date: 10 OCT 1968