

COLUMBIA

ALL COORDINATES ARE BASED ON THE MARYLAND STATE GRID SYSTEM

COORDINATE

SCHEDULE

NO.	NORTH	EAST
751	509 318.591	847 283.281
752	509 413.404	847 379.915
69	509 211 935	848 057 174
70	509 001.551	848 121 093
88	508 774 770	847 856.881

NO.	NORTH	EAST
1358	507 688 665	848 103 853
226	508 729 352	847 665 564
757	509 500 615	847 665 959
764	509 503 804	847 796 953
264	508 746 515	847 556 910

NO.	NORTH	EAST
224	508 479 704	847 757 603
225	508 497 932	847 727 309
229	508 485 867	847 678 786
230	508 455 574	847 660 558
239	508 418 170	847 510 138
505	508 108 800	848 081 113
511	508 081 179	847 979 811
515	508 075 019	847 885 680
525	508 028 455	847 722 636
527	507 903 100	847 646 940
646	508 555 284	847 713 048
648	508 575 378	847 716 638
649	508 559 291	847 651 942
651	508 543 219	847 664 525
359	509 452 793	847 806 322
945	508 990 289	847 946 841
313	508 369 648	847 522 204
355	509 659 327	847 973 432
357	509 449 854	847 869 923
362	509 007 731	848 004 250
363	508 850 500	848 022 539

NO.	NORTH	EAST
364	508 823 320	848 020 815
366	508 797 003	848 049 403
367	508 809 701	848 135 716
369	508 820 658	848 152 938
370	508 754 701	848 162 642
372	508 760 234	848 142 994
373	508 744 441	848 035 652
375	508 721 291	848 014 341
376	508 697 764	848 012 848
417	508 639 835	848 011 659
427	508 463 514	848 039 141
428	508 338 829	848 075 930
430	508 321 925	848 106 983
431	508 329 000	848 130 961
432	508 331 675	848 259 859
433	508 344 861	848 372 293
434	508 352 630	848 387 256
436	508 389 949	848 395 637
437	508 469 478	848 335 171
439	508 478 153	848 307 638
442	508 556 029	848 332 177
474	508 372 938	848 471 381
479	508 137 413	848 135 358
480	508 242 916	848 104 229
482	508 273 969	848 121 132
483	508 281 044	848 145 110
484	508 283 173	848 247 711
485	508 300 486	848 395 333
487	507 955 488	847 839 519
489	507 954 480	847 868 368
490	507 999 713	848 009 571
491	508 002 219	848 073 005
493	508 030 418	848 096 810
494	508 120 433	848 077 811

NO.	NORTH	EAST
495	507 873 888	847 836 666
496	507 912 671	847 895 792
497	507 949 752	848 011 544
498	507 952 258	848 074 979
500	507 926 025	848 100 935
504	507 713 519	848 049 243
516	507 783 189	847 896 159
518	507 765 001	847 742 044
529	507 834 636	848 150 262
531	507 805 813	848 168 309
532	507 758 695	848 343 038
534	507 761 889	848 363 199
546	507 710 419	848 330 020
547	507 757 537	848 155 291
549	507 741 695	848 125 199
552	507 697 522	848 345 842
558	507 557 351	848 475 160
563	507 630 874	848 202 513
564	507 679 624	848 099 653
569	508 313 914	848 421 195
571	508 301 737	848 455 623
572	508 184 579	848 468 881
573	508 175 300	848 518 012
575	508 013 166	848 487 393
590	507 973 313	848 428 983
591	507 977 952	848 404 417
593	508 076 215	848 422 974
596	508 096 142	848 452 179
621	508 903 021	847 659 815
622	508 982 964	847 922 939
624	509 014 152	847 939 591
625	509 138 538	847 901 800
627	509 155 191	847 870 612

NO.	NORTH	EAST
628	509 063 826	847 569 896
630	509 041 027	847 552 189
631	509 091 111	847 487 704
632	508 852 938	847 724 300
634	508 875 736	847 742 007
635	508 932 818	847 929 885
637	508 911 005	847 962 063
638	508 854 299	847 962 660
640	508 701 564	847 952 968
641	508 552 760	847 958 612
643	508 525 030	847 939 887
654	508 748 036	847 768 888
658	508 430 236	847 558 661
659	508 529 932	847 533 871
668	508 731 504	847 954 868
671	508 737 889	847 854 235
697	509 203 031	847 856 077
699	509 234 219	847 872 730
711	509 375 258	847 803 751
713	509 358 605	847 834 939
721	509 277 567	847 482 213
723	509 254 768	847 464 505
728	508 928 736	847 400 346
729	508 987 988	847 373 617
731	509 064 172	847 350 470
738	509 304 852	847 400 020
745	509 423 100	847 789 220
747	509 454 141	847 805 917

NO.	NORTH	EAST
750	509 190 235	847 280 239
767	508 475 573	847 948 190
769	508 457 997	847 978 312
812	508 752 709	847 505 155
813	508 838 040	847 409 221

NO.	NORTH	EAST
-----	-------	------

NO.	NORTH	EAST
1341	509 264 189	848 213 647
1342	508 780 123	848 394 702
1343	509 058 189	848 230 694
1344	508 325 925	848 646 937
1345	509 642 826	848 072 019
1346	509 672 134	848 007 671

NO.	NORTH	EAST
1360	508 700 478	848 426 572
1361	508 702 62	848 430 60
1362	509 067 65	848 325 01
1363	509 280 03	848 261 09
1364	509 605 36	848 086 03
1365	509 615 87	848 114 13
1366	509 653 33	848 100 12
1367	509 660 33	848 118 84
1368	508 668 13	848 440 52
1369	508 390 64	848 661 40
1370	508 561 08	848 517 77
1371	509 505 40	847 862 66

NO.	NORTH	EAST
-----	-------	------

SHEETS 1 THRU 3 TABULATIONS

TOTALS	ACREAGE
All lots	= 22.792
R.O.W. Arterial	= 1.763
Local	= 4.965
Open Space	= 3.941
Total	= 33.461
Lots this plat (incl. open space) = 146	

SURVEYOR'S, ENGINEER'S and OWNER'S CERTIFICATES

APPROVED FOR PUBLIC WATER & PUBLIC SEWERAGE SYSTEMS, HOWARD COUNTY HEALTH DEPT.

<i>[Signature]</i>	DATE
COUNTY HEALTH OFFICER	8-16-68
APPROVED HOWARD COUNTY PLANNING COMM.	
<i>[Signature]</i>	DATE
CHAIRMAN	8-28-68
<i>[Signature]</i>	DATE
DIRECTOR	8-30-68
APPROVED HOWARD COUNTY ROADS DEPARTMENT	
<i>[Signature]</i>	DATE
ROADS SUPERINTENDENT	8-21-68
APPROVED HOWARD COUNTY METROPOLITAN COMM.	
<i>[Signature]</i>	DATE
CHIEF ENGINEER	9-5-68

The undersigned, owner of the property shown on this Plat, grants unto (1) the Howard County Metropolitan Commission, its successors and assigns, the right to lay, construct and maintain water and sewer mains and laterals therefor in and under all road and street rights-of-way as shown hereon; (2) further, it adopts this plan of subdivision and reserves the fee simple title to the beds of the streets and/or roads hereon, except however, for one dollar consideration, it herewith grants the right and option to the Board of County Commissioners of Howard County to acquire (within a period of five years commencing with the date of recording of this plat among the Land Records of Howard County) the fee simple title to the beds of the streets and/or roads shown hereon, together with such adjacent land, if any, as may be shown on this plat as areas designated for the installation of street lighting facilities, reserving, however, unto Grantor, its successors and assigns, the right in perpetuity to lay, construct, enlarge, maintain and use cables and/or conduits for electrical transmission and other purposes beneath the surface of the lands subject to the rights granted herein to said Board of County Commissioners. The undersigned certifies that the subdivision plan shown hereon is correct as complying with the requirements of Final Development Plan Phase 44 recorded in Plat Book 16, folios 1 to 4, each inclusive, with all Open Space shown thereon to be used for drainage easements, if necessary, and the requirements of Article 17, Section 60 of the annotated code of Maryland concerning the making of this Plat and setting of markers have been complied with. The land shown hereon is a part of the land which by deed dated December 13, 1966 and recorded among the Land Records of Howard County, Maryland in Liber 463 folio 196, was granted and conveyed by C. Aileen Ames to the Howard Research and Development Corporation.

PROFESSIONAL LAND SURVEYOR
(By) *[Signature]* 3667
BROWNE PANDULLO & ASSOCIATES Reg. No.
COLUMBIA MARYLAND

PROFESSIONAL ENGINEER
(By) *[Signature]* 5228
BROWNE PANDULLO & ASSOCIATES Reg. No.
COLUMBIA MARYLAND

OWNER
(By) *[Signature]*
THE HOWARD RESEARCH AND DEVELOPMENT CORPORATION
VILLAGE OF CROSS KEYS, BALTIMORE, MARYLAND
Auth. Agent

RECORDED IN PLAT BOOK 15, FOLIO 43
on 9-25 1968 among The
Land Records of Howard County, Maryland

COLUMBIA
VILLAGE OF OAKLAND MILLS
THUNDER HILL

SECTION 1
AREA 1
Sheet 1 of 3
6TH Election District of Howard County, Md.
Scale: 1" = 100' Date: APRIL 18, 1968

DRWN BY F.S.
CHK'D BY H.W.E.

LOT AREAS		LOT AREAS		LOT AREAS	
LOT NO	SQUARE FEET	ACRES	LOT NO	SQUARE FEET	ACRES
23	6,958	0.160	123	7,332	0.168
22	8,500	0.193	122	7,374	0.166
21	2,784	0.133	121	6,879	0.158
20	6,013	0.138	120	6,273	0.144
19	7,843	0.180	119	5,400	0.124
18	6,741	0.152	118	5,400	0.124
17	7,529	0.173	117	5,400	0.124
16	8,603	0.195	116	5,400	0.124
15	6,549	0.149	115	6,616	0.151
14	7,767	0.179	114	6,616	0.151
13	7,224	0.164	113	5,400	0.124
12	7,150	0.164	112	5,400	0.124
11	7,150	0.164	111	5,400	0.124
10	7,150	0.164	110	5,400	0.124
9	7,150	0.164	109	6,350	0.144
8	7,150	0.164	108	6,350	0.144
7	7,150	0.164	107	7,968	0.182
6	7,150	0.164	106	6,994	0.160
5	7,150	0.164	105	6,994	0.160
4	12,745	0.292	104	7,936	0.182
			103	7,109	0.163
			102	7,887	0.181
			101	6,032	0.136
			100	6,035	0.136
			99	6,035	0.136
			98	6,035	0.136
			97	6,035	0.136
			96	6,035	0.136
			95	6,035	0.136
			94	6,035	0.136
			93	6,035	0.136
			92	6,035	0.136
			91	6,035	0.136
			90	6,035	0.136
			89	6,035	0.136
			88	6,035	0.136
			87	6,035	0.136
			86	6,035	0.136
			85	6,035	0.136
			84	6,035	0.136
			83	6,035	0.136
			82	6,035	0.136
			81	6,035	0.136
			80	6,035	0.136
			79	6,035	0.136
			78	6,035	0.136
			77	6,035	0.136
			76	6,035	0.136
			75	6,035	0.136
			74	6,035	0.136
			73	6,035	0.136
			72	6,035	0.136
			71	6,035	0.136
			70	6,035	0.136
			69	6,035	0.136
			68	6,035	0.136
			67	6,035	0.136

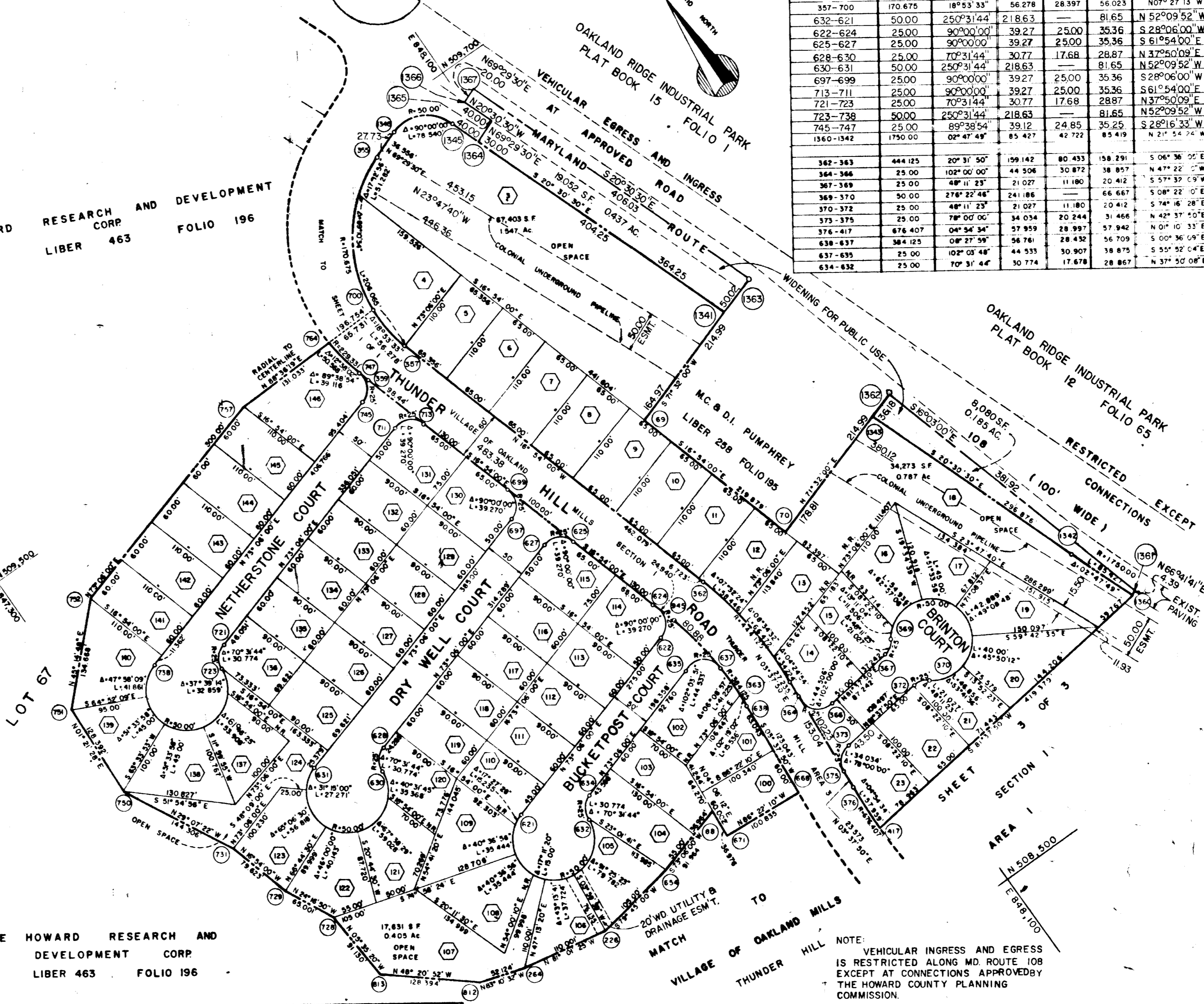
OAKLAND RIDGE INDUSTRIAL PARK
PLAT BOOK 15 FOLIO 1

COLUMBIA

ALL COORDINATES ARE BASED ON THE MARYLAND STATE GRID SYSTEM

SEE DRAINAGE EASEMENT THIS SHEET

THE HOWARD RESEARCH AND DEVELOPMENT CORP
LIBER 463 FOLIO 196



CURVE		DATA				
NOS	RAD	Δ	ARC	TAN	CH	L C B
747-764	229.331	12°36'02"	50.568	25.387	50.466	N 0°13'55" W
357-390	170.875	88°25'30"	257.347	160.251	255.652	N 65°17'45" E
1346-1345	50.00	90°00'00"	78.540	50.00	70.711	S 65°50'30" E
764-359	229.331	12°36'02"	51.976	26.000	51.864	N 10°24'26" W
945-638	384.125	80°31'50"	137.842	69.587	136.907	S 26°38'25" E
357-700	170.875	10°31'33"	56.278	28.397	56.023	N 07°27'15" W
632-621	50.00	250°31'44"	218.63	—	81.65	N 52°09'52" W
622-624	25.00	90°00'00"	39.27	25.00	35.36	S 25°06'00" W
625-627	25.00	90°00'00"	39.27	25.00	35.36	S 61°54'00" E
628-630	25.00	70°31'44"	30.77	17.68	28.87	N 37°50'09" E
630-631	50.00	250°31'44"	218.63	—	81.65	N 52°09'52" W
697-699	25.00	90°00'00"	39.27	25.00	35.36	S 28°06'00" W
713-711	25.00	90°00'00"	39.27	25.00	35.36	S 61°54'00" E
721-723	25.00	70°31'44"	30.77	17.68	28.87	N 37°50'09" E
723-738	50.00	250°31'44"	218.63	—	81.65	N 52°09'52" W
745-747	25.00	89°38'54"	39.12	24.85	35.25	S 28°16'33" W
1360-1342	1750.00	02°47'49"	85.427	42.722	85.419	N 21°34'24" W
362-363	444.125	20°31'50"	106.142	80.433	106.291	S 04°36'00" E
364-366	25.00	100°00'00"	44.506	30.872	38.857	N 47°22'00" W
367-369	25.00	48°11'23"	21.027	11.180	20.412	S 57°37'09" W
369-370	50.00	274°22'46"	241.186	—	66.667	S 08°22'00" E
370-372	25.00	48°11'23"	21.027	11.180	20.412	S 74°16'28" E
373-375	25.00	78°00'00"	34.034	20.244	31.466	N 42°37'50" E
376-417	676.407	04°34'34"	57.559	28.937	57.942	N 01°10'33" E
638-637	384.125	08°27'59"	56.761	28.432	56.709	S 00°36'09" E
637-635	25.00	102°03'48"	44.535	30.907	38.875	S 55°52'04" E
634-632	25.00	70°31'44"	30.774	17.678	28.867	N 37°50'08" E

TABULATIONS

TOTALS	ACREAGE
All lots	= 9.929
R.O.W. Arterial	= 0.768
Local	= 1.933
Open Space	= 3.001
Total	= 15.631
Lots this plat (incl. open space)	= 68

Minimum building setback restrictions from property lines and the right-of-way of any public road or street to be in accordance with the recorded Final Development Plan criteria.

THE HOWARD RESEARCH AND DEVELOPMENT CORP
LIBER 463 FOLIO 196

SURVEYOR'S, ENGINEER'S and OWNER'S CERTIFICATES

APPROVED FOR PUBLIC WATER & PUBLIC SEWERAGE SYSTEMS, HOWARD COUNTY HEALTH DEPT.

County Health Officer Date
APPROVED: HOWARD COUNTY PLANNING COMM.
Chairman Date
Director Date

APPROVED: HOWARD COUNTY ROADS DEPARTMENT
Roads Superintendent Date

APPROVED: HOWARD COUNTY METROPOLITAN COMM.
Chief Engineer Date

The undersigned, owner of the property shown on this Plat, grants unto (1) the Howard County Metropolitan Commission, its successors and assigns, the right to lay, construct and maintain water and sewer mains and laterals therefor in and under all road and street rights-of-way as shown hereon; (2) further, it adopts this plan of subdivision and reserves the fee simple title to the beds of the streets and/or roads hereon, except however, for one dollar consideration, it herewith grants the right and option to the Board of County Commissioners of Howard County to acquire (within a period of five years commencing with the date of recording of this plat among the Land Records of Howard County) the fee simple title to the beds of the streets and/or roads shown hereon, together with such adjacent land, if any, as may be shown on this plat as areas designated for the installation of street lighting facilities, reserving, however, unto Grantor, its successors and assigns, the right in perpetuity to lay, construct, enlarge, maintain and use cables and/or conduits for electrical transmission and other purposes beneath the surface of the lands subject to the rights granted herein to said Board of County Commissioners. The undersigned certifies that the subdivision plan shown hereon is correct as complying with the requirements of Final Development Plan Phase 44 recorded in Plat Book 16 folios 1 to 4, each inclusive, with all Open Space shown thereon to be used for drainage easements, if necessary, and the requirements of Article 17, Section 60 of the annotated code of Maryland concerning the making of this Plat and setting of markers have been complied with. The land shown hereon is a part of the land which by deed dated December 13, 1966 and recorded among the Land Records of Howard County, Maryland in Liber 463 folio 196 was granted and conveyed by C. Aileen Ames to the Howard Research and Development Corporation.

PROFESSIONAL LAND SURVEYOR
(By) Richard S. Browne 5467
BROWNE - PANDULLO AND ASSOCIATES
COLUMBIA, MARYLAND

PROFESSIONAL ENGINEER
(By) Richard S. Browne 5278
BROWNE - PANDULLO AND ASSOCIATES
COLUMBIA, MARYLAND

OWNER
(By) Richard S. Browne Treasurer
THE HOWARD RESEARCH AND DEVELOPMENT CORPORATION
VILLAGE OF CROSS KEYS, BALTIMORE, MARYLAND

RECORDED IN PLAT BOOK 15 FOLIO 44
on 9-25, 1968 among The
Land Records of Howard County, Maryland.

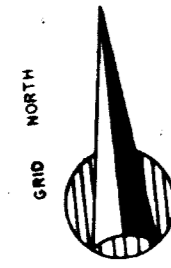
COLUMBIA
VILLAGE of OAKLAND MILLS
THUNDER HILL

SECTION 1
AREA 1
Sheet 2 of 3
6th Election District of Howard County, Md.
Scale: 1" = 100'
Date: APRIL 18, 1968

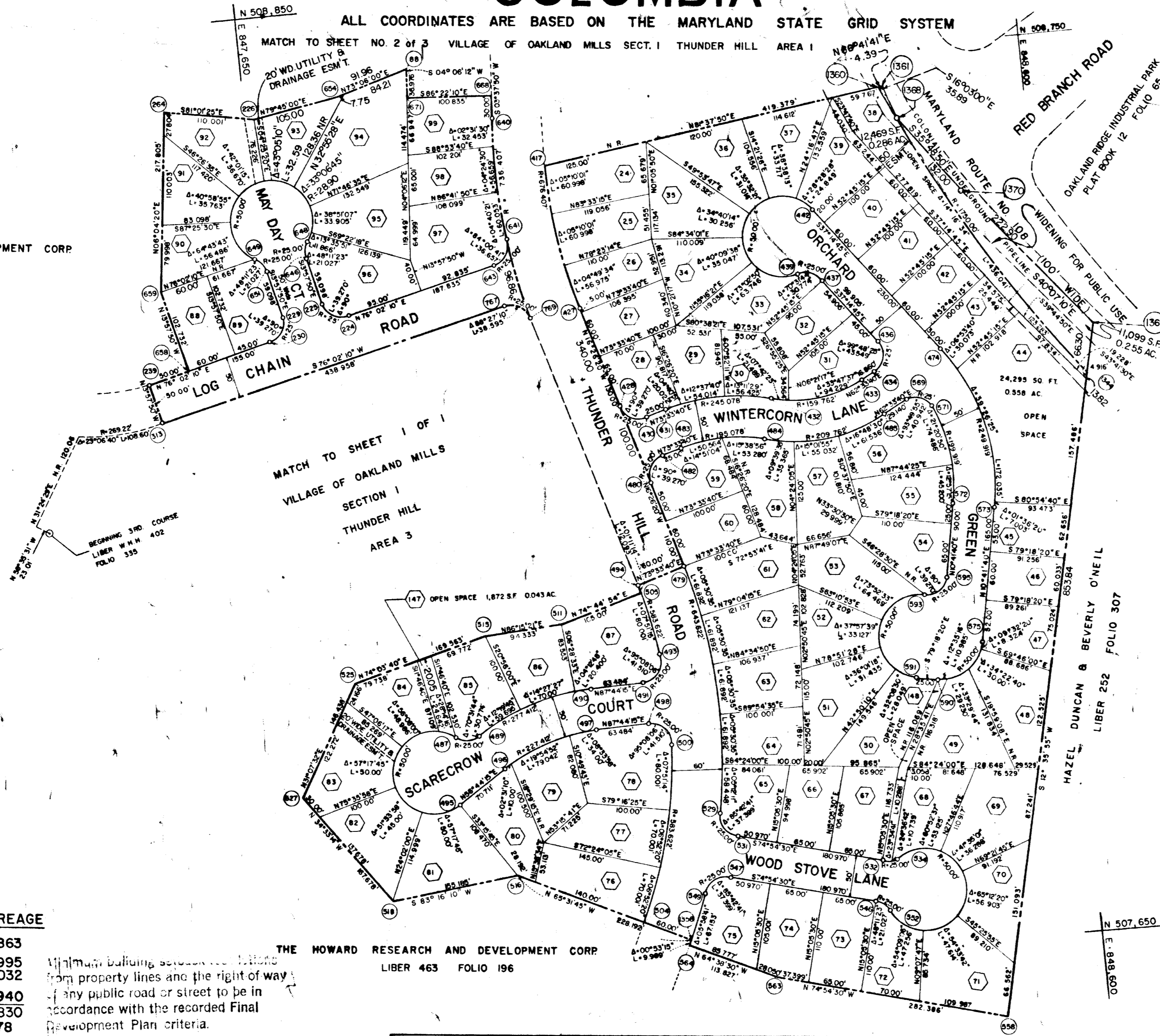
DRWN BY: J.V.M.
CHK'D BY: H.W.E.

COLUMBIA

ALL COORDINATES ARE BASED ON THE MARYLAND STATE GRID SYSTEM



THE HOWARD RESEARCH AND DEVELOPMENT CORP
LIBER 463 FOLIO 196



CURVE					DATA	
NOS	RAD	Δ	ARC	TAN	CH	L.C.B
549-547	25.00	85°42'41"	37.399	23.195	34.008	N62°14'09"E
546-542	25.00	48°11'23"	21.027	11.180	20.412	S50°48'49"E
552-534	50.00	276°22'46"	241.186	—	66.667	S15°05'30"W
534-532	25.00	48°11'23"	21.027	11.180	20.412	S80°59'49"W
531-529	25.00	85°42'41"	37.399	23.195	34.008	N32°03'10"E
529-479	643.622	27°14'31"	306.066	155.958	303.143	S02°49'05"E
480-482	25.00	90°00'00"	39.270	25.000	35.355	N28°33'40"E
483-484	195.078	30°30'00"	103.844	53.184	102.623	N88°48'40"E
484-485	209.762	41°30'00"	151.933	79.472	148.633	S83°18'40"E
569-571	25.00	93°49'55"	40.942	26.731	36.518	S70°31'22"E
571-572	199.919	34°18'05"	119.686	61.697	117.907	S06°27'22"E
595-593	25.00	90°00'00"	39.270	25.000	35.355	S55°41'40"W
593-591	50.00	80°00'00"	157.080	—	100.000	N10°41'40"E
590-575	50.00	90°00'00"	78.540	50.000	70.711	S55°41'40"W
573-474	249.919	47°56'25"	209.111	111.115	203.064	S13°16'32"E
442-439	50.00	250°31'44"	218.627	—	81.650	N17°29'23"E
439-437	25.00	70°31'44"	30.774	17.678	28.868	S72°30'37"E
436-434	25.00	99°48'25"	43.549	29.692	36.248	S12°39'28"W
433-432	159.762	44°30'00"	115.717	60.528	113.204	S83°18'40"W
432-431	245.078	30°30'00"	130.461	66.816	128.926	N88°48'40"E
430-428	25.00	90°00'00"	39.270	25.000	35.355	N86°26'20"W
427-417	676.407	15°09'36"	178.971	90.011	178.450	N08°51'32"E
640-641	736.407	11°36'21"	149.165	74.839	148.911	N02°10'20"W
641-643	25.00	84°00'47"	36.657	22.515	33.460	S34°01'50"W
224-225	25.00	90°00'00"	39.270	25.000	35.355	N58°57'50"W
646-648	25.00	48°11'23"	21.027	11.180	20.412	N10°07'52"E
648-649	50.00	276°22'46"	241.186	—	66.667	N76°02'10"E
649-651	25.00	48°11'23"	21.027	11.180	20.412	S38°03'31"E
229-230	25.00	90°00'00"	39.270	25.000	35.355	S31°02'10"W
767-769	25.00	88°27'10"	36.595	24.334	34.875	S59°44'15"E
640-769	736.41	19°09'31"	246.03	124.17	244.89	S05°56'26"E
494-493	583.622	09°02'29"	92.094	46.143	91.998	S11°55'06"E
493-491	25.00	95°08'06"	41.510	27.347	36.904	S40°10'12"W
490-489	277.412	31°00'00"	150.090	76.933	148.270	N72°14'05"E
489-487	25.00	70°31'44"	30.774	17.678	28.868	N87°59'53"W
487-495	50.00	250°31'44"	218.627	—	81.650	N02°00'07"E
496-497	227.412	31°00'00"	123.042	63.067	121.546	N72°14'15"E
498-500	25.00	95°08'06"	41.510	27.346	36.903	S44°41'45"E
500-504	583.622	2°35'54"	220.003	111.323	218.703	S13°40'18"W
1358-519	643.622	05°05'26"	57.184	28.611	57.165	S21°55'32"E
494-505	583.622	0°11'14"	12.093	6.047	12.093	S15°50'43"E
1358-564	643.622	00°53'15"	9.970	4.985	9.969	S24°54'52"W
1344-1360	1750.00	14°16'34"	436.041	219.156	434.914	N30°26'36"W

LOT AREAS					
LOT NO	SQUARE FEET	ACRES	LOT NO	SQUARE FEET	ACRES
148	2,329	0.053	63	6,877	0.158
87	10,191	0.234	62	7,038	0.161
76	7,427	0.171	61	8,507	0.195
85	8,303	0.191	60	6,000	0.138
84	6,420	0.147	59	7,236	0.167
83	8,958	0.206	58	7,950	0.182
82	8,568	0.197	57	8,586	0.197
81	9,151	0.211	56	8,115	0.186
80	7,659	0.176	55	6,712	0.154
79	6,758	0.156	54	7,639	0.175
78	9,638	0.224	53	8,128	0.187
77	7,736	0.178	52	6,792	0.156
76	8,766	0.202	51	8,325	0.191
75	7,565	0.174	50	8,450	0.193
74	7,081	0.162	49	8,745	0.201
73	7,050	0.161	48	9,108	0.209
72	6,882	0.158	47	8,869	0.203
71	10,164	0.233	46	5,415	0.124
70	7,499	0.172	45	6,658	0.152
69	9,846	0.228	44	6,992	0.161
68	7,221	0.166	43	6,000	0.138
67	7,234	0.166	42	6,000	0.138
66	6,528	0.150	41	6,000	0.138
65	6,778	0.156	39	7,680	0.176
64	6,629	0.152	37	7,968	0.183

TABULATIONS

TOTALS	ACREAGE
All lots	= 12.863
R.O.W. Arterial	= 0.995
Local	= 3.032
Open Space	= 0.940
Total	= 17.830
Lots this plat (incl. open space)	= 78

THE HOWARD RESEARCH AND DEVELOPMENT CORP
LIBER 463 FOLIO 196

SURVEYOR'S, ENGINEER'S and OWNER'S CERTIFICATES

The undersigned, owner of the property shown on this Plat, grants unto (1) the Howard County Metropolitan Commission, its successors and assigns, the right to lay, construct and maintain water and sewer mains and laterals therefor in and under all road and street rights-of-way as shown hereon; (2) further, it adopts this plan of subdivision and reserves the fee simple title to the beds of the streets and/or roads hereon, except however, for one dollar consideration, it herewith grants the right and option to the Board of County Commissioners of Howard County to acquire (within a period of five years commencing with the date of recording of this plat among the Land Records of Howard County) the fee simple title to the beds of the streets and/or roads shown hereon, together with such adjacent land, if any, as may be shown on this plat as areas designated for the installation of street lighting facilities, reserving, however, unto Grantor, its successors and assigns, the right in perpetuity to lay, construct, enlarge, maintain and use cables and/or conduits for electrical transmission and other purposes beneath the surface of the lands subject to the rights granted herein to said Board of County Commissioners. The undersigned certify that the subdivision plan shown hereon is correct as complying with the requirements of Final Development Plan Phase 44 recorded in Plat Book 16 folios 1 to 4, each inclusive, with all Open Space shown thereon to be used for drainage easements, if necessary, and the requirements of Article 17, Section 60 of the annotated code of Maryland concerning the making of this Plat and setting of markers have been complied with. The land shown hereon is a part of the land which by deed dated December 13, 1966 and recorded among the Land Records of Howard County, Maryland in Liber 463 folio 196 was granted and conveyed by C. Aileen Ames to the Howard Research and Development Corporation.

NOTE:
VEHICULAR INGRESS AND EGRESS IS RESTRICTED ALONG MD. ROUTE 108 EXCEPT AT CONNECTIONS APPROVED BY THE HOWARD COUNTY PLANNING COMMISSION.

RECORDED IN PLAT BOOK 15 FOLIO 45
on 9-26, 1968 among The
Land Records of Howard County, Maryland.

COLUMBIA
VILLAGE OF OAKLAND MILLS
THUNDER HILL

SECTION 1
AREA 1
Sheet 3 of 3
5th Election District of Howard County, Md.
Scale: 1" = 100'
Date: APRIL 18, 1968

APPROVED FOR PUBLIC WATER & PUBLIC SEWERAGE SYSTEMS, HOWARD COUNTY HEALTH DEPT.
[Signature] Date 4/18/68
County Health Officer

APPROVED: HOWARD COUNTY PLANNING COMM.
[Signature] Date 8-28-68
Chairman

[Signature] Date 8-30-68
Director

APPROVED: HOWARD COUNTY ROADS DEPARTMENT
[Signature] Date 8-25-68
Roads Superintendent

APPROVED: HOWARD COUNTY METROPOLITAN COMM.
[Signature] Date 9-5-68
Chief Engineer

PROFESSIONAL LAND SURVEYOR
(By) *[Signature]* 5467
BROWNE - PANDULLO AND ASSOCIATES
Reg. No.
COLUMBIA, MARYLAND

PROFESSIONAL ENGINEER
(By) *[Signature]* 5238
BROWNE - PANDULLO AND ASSOCIATES
Reg. No.
COLUMBIA, MARYLAND

OWNER
(By) *[Signature]*
THE HOWARD RESEARCH AND DEVELOPMENT CORPORATION
VILLAGE OF CROSS KEYS, BALTIMORE, MARYLAND
Auth. Agent

DRWN. BY: J.D.L.
CHK'D BY: H.W.E.