

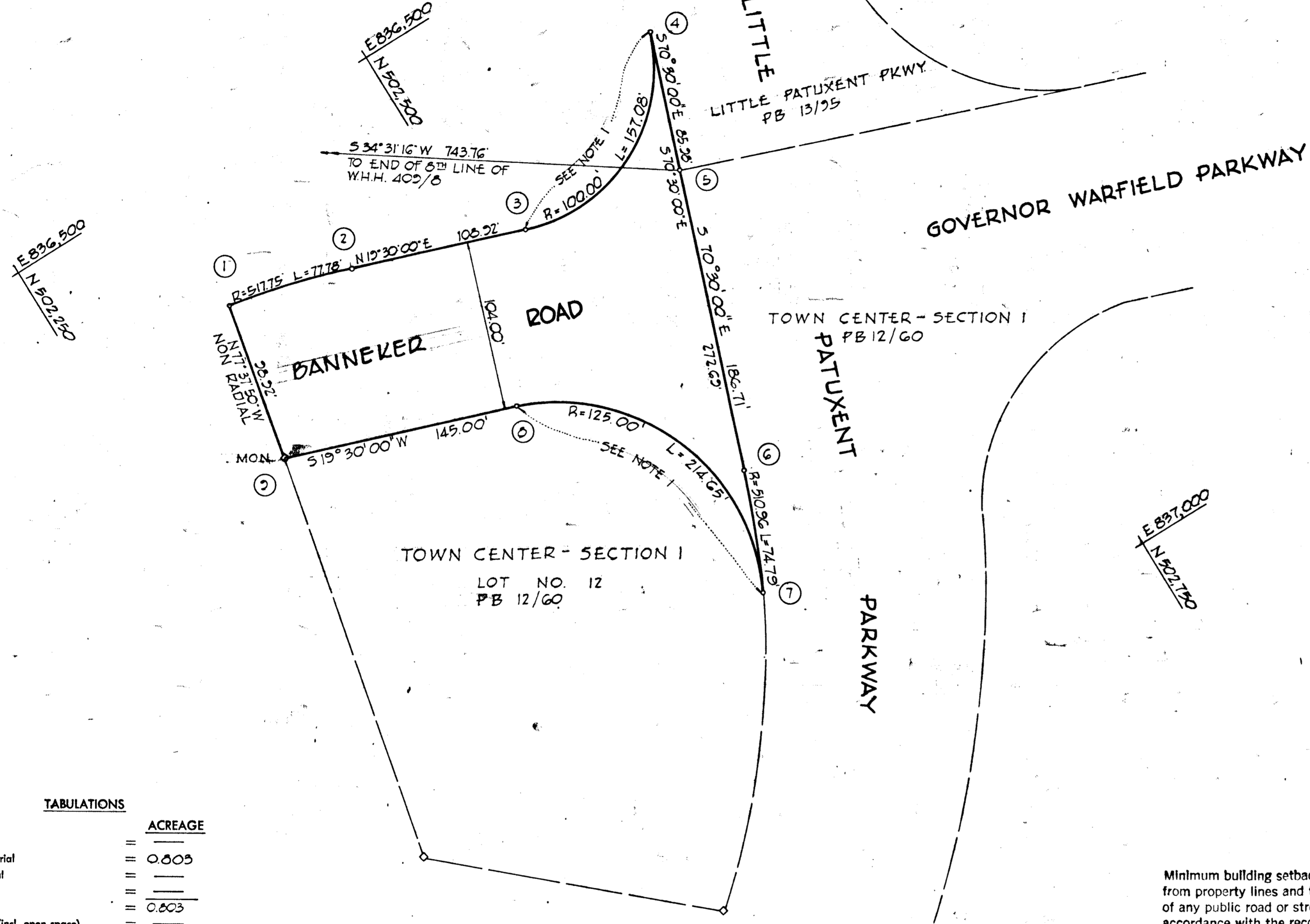
NOTE 1: VEHICULAR INGRESS & EGRESS IS RESTRICTED BETWEEN THESE LIMITS EXCEPT AT POINTS OF ACCESS APPROVED BY THE HOWARD COUNTY PLANNING COMMISSION.

COLUMBIA

ALL COORDINATES ARE BASED ON THE MARYLAND STATE GRID SYSTEM

THE HOWARD RESEARCH & DEVELOPMENT CORP.
LIBER 463 FOLIO 196

CURVE		TABLE				
FROM	TO	Δ	RADIUS	LENGTH	TANGENT	CHORD
					BEARING	DIST
1	2	00°36'25"	517.75'	77.78'	36.96'	N15°11'48"E 77.70'
3	4	30°00'00"	100.00'	157.08'	100.00'	N25°30'00"W 141.42'
6	7	00°23'12"	510.96'	74.73'	37.45'	S66°18'24"E 74.72'
7	8	20°23'12"	125.00'	214.65'	144.78'	S60°41'36"W 189.23'



TOTALS	TABULATIONS	ACREAGE
All lots	=	0.803
R.O.W. Arterial	=	
Local	=	
Open Space	=	
Total	=	0.803
Lots this plat (incl. open space)	=	
Residential lots this plat	=	

Minimum building setback restrictions from property lines and the right-of-way of any public road or street to be in accordance with the recorded Final Development Plan criteria.

RECEIVED
SEP 6 1968
HOWARD COUNTY
PLANNING COMMISSION

F-68-42

COORDINATE TABLE					
NO	NORTH	EAST	NO	NORTH	EAST
1	502,360.60	836,582.64	6	502,565.07	836,835.74
2	502,425.78	836,603.21	7	502,535.04	836,904.17
3	502,528.46	836,639.57	8	502,466.28	836,727.87
4	502,656.10	836,578.68	9	502,329.60	836,679.47
5	502,627.39	836,659.74			

APPROVED: FOR PUBLIC WATER & PUBLIC SEWERAGE SYSTEMS, HOWARD COUNTY HEALTH DEPT.
 County Health Officer *[Signature]* Date 8/28/68
 APPROVED: HOWARD COUNTY PLANNING COMM.
 Chairman *[Signature]* Date 8-30-68
 Director *[Signature]* Date
 APPROVED: HOWARD COUNTY ROADS DEPARTMENT
 Roads Superintendent *[Signature]* Date 8-30-68
 APPROVED: HOWARD COUNTY METROPOLITAN COMM.
 Chief Engineer *[Signature]* Date 8-30-68

SURVEYOR'S, ENGINEER'S and OWNER'S CERTIFICATES

The undersigned, owner of the property shown on this Plat, grants unto, (1) the Howard County Metropolitan Commission, its successors and assigns, the right to lay, construct and maintain water and sewer mains and laterals therefor in and under all road and street rights-of-way as shown hereon; (2) further, it adopts this plan of subdivision and reserves the fee simple title to the beds of the streets and/or roads hereon, except however, for one dollar consideration, it herewith grants the right and option to the Board of County Commissioners of Howard County to acquire (within a period of five years commencing with the date of recording of this plat among the Land Records of Howard County) the fee simple title to the beds of the streets and/or roads shown hereon, together with such adjacent land, if any, as may be shown on this plat as areas designated for the installation of street lighting facilities, reserving, however, unto Grantor, its successors and assigns, the right in perpetuity to lay, construct, enlarge, maintain and use cables and/or conduits for electrical transmission and other purposes beneath the surface of the lands subject to the rights granted herein to said Board of County Commissioners. The undersigned certifies that the subdivision plan shown hereon is correct as complying with the requirements of Final Development Plan Phase 64 recorded in Plat Book 16 folios 47 to 49, each inclusive, with all Open Space shown thereon to be used for drainage easements, if necessary, and the requirements of Article 17, Section 60 of the annotated code of Maryland concerning the making of this Plat and setting of markers have been complied with. The land shown hereon is a part of the land which by Deed dated December 13, 1966 and recorded among the Land Records of Howard County, Maryland in Liber 463 folio 196 was granted and conveyed by C. Aileen Ames to the Howard Research and Development Corporation.

PROFESSIONAL LAND SURVEYOR (By) *[Signature]* 1023 N. CALVERT ST. BALTIMORE, MD. 21202
 PROFESSIONAL ENGINEER (By) *[Signature]* 1023 N. CALVERT ST. BALTIMORE, MD. 21202
 OWNER (By) *[Signature]* THE HOWARD RESEARCH & DEVEL CORP. VILLAGE OF CROSSKEYS, BALTO. MD. 21210

RECORDED IN PLAT BOOK 15 FOLIO 34
 on Sept. 4, 1968 among The
 Land Records of Howard County, Maryland.

COLUMBIA
TOWN CENTER

SECTION 3
 AREA 1
 Sheet 1 of 1
 5TH Election District of Howard County, Md.
 Scale: 1" = 50' Date: JULY 9, 1968

#55

2 Lines