

COORDINATES		
NO	NORTH	EAST
19	509,697.38	838,502.57
134	510,910.95	837,801.15
522	509,358.68	839,040.01
524	509,333.28	838,963.83
527	509,288.16	839,126.06
600	509,253.98	838,726.33
635	509,114.78	838,860.92
750	509,373.14	839,221.67
752	509,470.48	839,299.41
754	509,547.61	839,298.96
843	509,296.25	838,749.17
845	509,387.73	838,951.49
848	509,407.13	839,027.67
850	510,445.80	838,643.06
853	510,531.94	838,685.87
856	510,672.69	838,505.93
859	510,530.25	838,387.21
863	510,560.66	838,318.05
868	510,748.62	838,318.77
871	510,849.61	838,317.66
874	510,607.71	838,703.86
877	510,741.79	838,843.30
880	510,990.52	838,654.28
883	511,078.11	838,704.32
885	510,816.85	838,874.46
888	510,810.11	838,880.67
891	510,929.52	839,100.10
894	511,022.28	839,082.52
898	510,969.24	839,189.16
902	509,543.53	839,052.05
133	510,866.90	837,874.81
135	511,382.01	838,719.26
523	509,338.17	839,070.91
525	509,297.44	838,856.31
599	509,285.72	839,076.11
634	509,227.33	838,656.97
749	509,345.52	839,120.36
751	509,445.66	839,202.54
753	509,542.32	839,279.67
755	509,541.00	839,436.84
844	509,341.49	838,832.65
847	509,439.92	839,044.99
849	509,689.21	838,854.25
852	510,565.33	838,677.32
855	510,664.77	838,471.47
858	510,499.55	838,378.07
862	510,588.77	838,364.87
865	510,725.77	838,421.18
867	510,749.33	838,383.57
873	510,614.59	838,737.64
876	510,776.25	838,843.88
878	510,782.99	838,837.67
881	510,959.77	838,709.91
884	511,005.74	838,741.95
887	510,807.83	838,915.06
890	510,962.01	839,111.63
893	511,062.04	839,028.33
896	511,147.28	839,083.75
899	510,982.37	839,157.29
903	509,576.51	839,059.71

COORDINATES		
NO	NORTH	EAST
904	509,582.87	839,069.03
907	509,643.88	839,227.77
911	509,875.13	839,142.51
914	509,617.81	839,031.52
916	509,730.08	838,883.06
919	510,327.75	838,656.21
921	510,319.45	838,767.03
924	510,156.36	838,938.52
928	510,148.96	839,017.86
930	510,205.09	838,969.93
933	510,393.15	838,704.33
963	510,533.39	838,744.52
970	510,783.79	839,250.44
975	510,529.36	838,920.54
977	510,464.39	838,859.10
980	510,297.85	839,107.93
984	509,949.29	839,142.85
986	509,843.79	839,318.26
990	509,620.94	839,449.78
1027	510,445.74	838,697.90
1065	511,306.64	839,191.58
1070	511,240.10	838,825.48
1092	510,253.34	838,204.32
1113	510,401.90	838,466.27
866	510,691.31	838,429.10
906	509,639.82	839,191.64
910	509,717.31	839,181.25
912	509,624.17	839,040.85
915	509,622.69	838,998.03
917	509,630.93	839,168.16
920	510,345.73	838,688.47
922	510,182.56	838,925.29
925	510,110.66	838,941.98
929	510,178.88	838,983.15
931	510,366.86	838,782.90
934	510,426.90	838,689.37
969	510,918.91	839,196.42
972	510,700.36	839,104.41
976	510,493.73	838,886.84
978	510,442.45	838,959.80
982	510,114.54	839,200.45
985	509,896.16	839,188.43
988	509,786.39	839,488.86
1026	510,466.85	838,652.57
1062	510,975.11	839,264.84
1066	511,439.33	839,160.37
1079	510,840.47	837,889.00
1111	510,235.22	838,401.95
1115	510,522.88	838,532.24

CURVE DATA					
NO	Δ	RAD	LENGTH	TAN	CHORD
522-523	95°44'21"	25.00'	41.77'	27.64'	556°25'05"E 37.08'
523-599	05°45'15"	525.00'	52.73'	26.38'	505°40'18"E 52.70'
524-525	13°52'02"	475.00'	115.65'	58.11'	N68°44'12"E 113.37'
844-845	13°57'02"	525.00'	127.83'	64.22'	N68°44'12"E 127.51'
847-849	95°44'21"	25.00'	41.77'	27.64'	S27°50'34"W 37.08'
847-849	34°47'18"	525.00'	318.76'	164.47'	S37°25'16"E 313.89'
849-850	78°26'18"	621.16'	850.36'	506.95'	N15°35'46"W 785.51'
850-853	05°36'00"	784.61'	96.23'	48.16'	N26°25'23"E 96.20'
853-852	87°09'41"	25.00'	38.03'	23.79'	S14°21'27"E 34.47'
855-856	90°00'00"	25.00'	39.27'	28.00'	N77°03'42"E 35.36'
858-859	30°58'00"	60.00'	32.43'	16.62'	N16°34'38"E 32.04'
858-863	266°58'01"	60.00'	279.57'		N45°25'26"W 87.07'
863-862	55°59'53"	60.00'	58.64'	31.90'	S60°09'39"W 56.34'
865-866	90°00'00"	25.00'	39.27'	25.00'	S12°56'18"E 35.36'
869-868	65°22'32"	60.00'	68.46'	38.50'	N89°22'20"E 64.81'
868-871	245°22'33"	60.00'	256.96'		N00°37'34"W 101.00'
874-873	87°09'41"	25.00'	38.03'	23.79'	S78°28'52"W 34.47'
873-877	09°38'02"	984.61'	165.56'	82.97'	N39°43'02"E 165.36'
877-876	87°09'41"	25.00'	38.03'	23.79'	S00°57'13"W 34.47'
878-881	13°32'30"	925.00'	218.62'	109.82'	N35°51'23"W 218.11'
881-880	63°58'08"	60.00'	66.99'	37.47'	S61°04'12"E 63.56'
880-883	245°34'48"	60.00'	257.17'		N79°44'08"E 100.88'
884-885	15°09'10"	875.00'	231.41'	116.38'	N35°03'03"W 230.73'
888-887	87°09'40"	25.00'	38.03'	23.79'	N86°17'28"W 34.47'

CURVE DATA					
NO	Δ	RAD	LENGTH	TAN	CHORD
887-891	12°54'53"	984.61'	221.93'	111.44'	N56°40'08"E 221.66'
891-890	87°09'41"	25.00'	38.03'	23.79'	S19°32'44"W 34.47'
894-893	05°22'32"	60.00'	68.46'	38.50'	S56°43'22"E 64.81'
893-896	245°22'32"	60.00'	256.96'		N33°16'37"E 101.00'
897-902	26°44'08"	575.00'	268.31'	136.64'	S16°09'44"E 265.88'
902-903	85°13'11"	25.00'	37.18'	23.00'	N13°04'47"E 33.85'
904-917	16°53'32"	375.00'	110.56'	55.68'	N64°08'09"E 110.16'
906-907	35°16'48"	60.00'	36.95'	19.08'	N83°35'01"E 36.36'
907-910	267°09'54"	60.00'	279.77'		S32°21'31"E 86.93'
910-911	57°00'29"	60.00'	59.70'	32.58'	S44°33'47"W 57.27'
911-912	15°22'38"	425.00'	114.06'	57.38'	N63°22'42"E 113.72'
914-915	85°13'12"	25.00'	37.18'	23.00'	N81°42'01"W 33.85'
915-916	15°43'29"	575.00'	157.81'	79.40'	S44°57'04"E 157.31'
916-919	48°03'37"	571.16'	678.47'	385.69'	N20°47'07"W 639.28'
919-920	95°15'09"	25.00'	41.56'	27.40'	N68°52'17"E 36.74'
921-922	44°43'18"	275.00'	214.65'	113.13'	S49°08'30"E 209.24'
924-925	44°54'02"	60.00'	47.02'	24.79'	S04°19'50"E 45.83'
925-928	269°48'04"	60.00'	282.53'		S63°13'09"W 85.00'
928-929	44°54'02"	60.00'	47.02'	24.79'	N49°13'52"W 45.83'
930-931	44°43'18"	325.00'	253.68'	133.70'	S49°08'30"E 247.28'
933-934	95°12'07"	25.00'	41.54'	27.38'	N23°54'05"W 36.92'
934-969	44°23'04"	934.61'	724.00'	381.26'	N45°53'30"E 706.03'
899-898	87°09'40"	25.00'	38.03'	23.79'	N67°36'57"W 34.47'
898-1062	04°39'19"	984.61'	80.00'	40.02'	N71°07'55"E 79.98'
817-906	06°38'18"	216.80'	25.12'	12.57'	N63°15'46"E 23.10'

NOTE:

THE COORDINATES SHOWN HEREON ARE BASED ON THE MARYLAND STATE GRID SYSTEM.

ALL REQUIREMENTS TO BE IN ACCORDANCE WITH THE APPROVED FINAL DEVELOPMENT CRITERIA FOR PHASE 16, VILLAGE OF WILDE LAKE AS RECORDED IN THE LAND RECORDS OF HOWARD COUNTY IN PLAT BOOK // FOLIO 97 TO 99.

ALL UTILITY AND DRAINAGE EASEMENTS SHOWN HEREON MAY BE USED FOR THE INSTALLATION AND MAINTENANCE OF SEWER DRAINAGE AND OTHER UNDERGROUND UTILITY SERVICES AS REQUIRED BY AUTHORIZED AGENCIES OF HOWARD COUNTY.

OPEN SPACE IS AVAILABLE FOR USE OF DRAINAGE EASEMENTS IN ACCORDANCE WITH THE APPROVED FINAL DEVELOPMENT CRITERIA FOR PHASE 16 VILLAGE OF WILDE LAKE AS RECORDED IN THE LAND RECORDS OF HOWARD COUNTY IN PLAT BOOK // FOLIO 97 TO 99.

GRANT OF EASEMENTS FOR WATER AND SEWER

WE THE HOWARD RESEARCH AND DEVELOPMENT CORPORATION OWNER OF THE PROPERTY SHOWN AND DESCRIBED HEREON DO HEREBY GRANT UNTO THE HOWARD COUNTY METROPOLITAN COMMISSION ITS SUCCESSORS AND ASSIGNS THE RIGHT TO LAY, CONSTRUCT AND MAINTAIN WATER AND SEWER MAINS AND SERVICE PIPES IN CONNECTION THEREWITH IN AND UNDER THE RIGHT-OF-WAY OF THE ROADS AND STREETS AS SHOWN HEREON.

THE HOWARD RESEARCH AND DEVELOPMENT CORPORATION

by David P. Warner
AUTHORIZED AGENT

Arterial ROW 2.580Ac.
Local ROW 6.953Ac.

TOTAL LOT AREA - AREA 2 = 34.926Ac.
TOTAL OPEN SPACE - AREA 2 = 0.270Ac.
TOTAL AREA - AREA 2 = 41.729 Ac.
TOTAL ROW AREA - AREA 2 = 9.533Ac.
TOTAL NO. OF LOTS - AREA 2 = 94 LOTS (Incl. 0.s.)
NO. OF RESIDENTIAL LOTS = 91 LOTS

RECORDED PLAT BOOK 15 FOLIO 22
N. 12/21 1967 AMONG THE LAND RECORDS OF
HOWARD COUNTY, MD.

COLUMBIA
THE VILLAGE OF WILDE LAKE
SECTION 9 - RUNNING BROOK
AREA - 2
HOWARD CO MD. ELECTION DIST. 5
SCALE 1"=100 JUNE 20, 1967
OWNER & DEVELOPER
HOWARD RESEARCH & DEVELOPMENT CORP.
THE VILLAGE OF CROSS KEYS
BALTIMORE MARYLAND
CONSOER TOWNSEND & ASSOCIATES
CONSULTING ENGINEERS
COLUMBIA MARYLAND

SHEET 1 OF 3

APPROVED: FOR PUBLIC WATER AND PUBLIC SEWERAGE SYSTEMS, HOWARD COUNTY HEALTH DEPARTMENT	
County Health Officer	Date
APPROVED: HOWARD COUNTY PLANNING COMM.	
Chairman	11-22-67 Date
Director	12-21-67 Date
APPROVED: HOWARD COUNTY ROADS DEPARTMENT	
Roads Superintendent	11-21-67 Date
APPROVED: HOWARD COUNTY METROPOLITAN COMM.	
Chief Engineer	12-15-67 Date

OWNERS CERTIFICATE:

We, the "Howard Research & Development Corporation" owners of the property shown and described hereon adopt this plan of subdivision, and reserve the fee simple title to the beds of the streets and/or roads shown hereon, and in consideration of the approval of the plat by The Planning Commission of Howard County, Maryland, we ourselves, our heirs, or assigns do hereby grant unto The Board of County Commissioners of Howard County, the right and option to acquire for the consideration of one dollar, the fee simple title to the beds of the streets and/or roads shown hereon within the period of five years from the date of the recording of this plat among the land records of Howard County, Maryland.

Witness our hand and seal this 3rd day of July, 1967

THE HOWARD RESEARCH AND DEVELOPMENT CORPORATION

by David P. Warner
AUTHORIZED AGENT

SURVEYORS CERTIFICATE

I, CARL H. RITZEL, hereby certify that the plan shown hereon is correct, that it is a subdivision of part of the land which by deed dated DECEMBER 13, 1966 and recorded among the land records of Howard County, Maryland in Liber 463 at Folio 196 was granted and conveyed by C. AILEEN AMES to Howard Research and Development Corporation, and that stones and monuments marked thus ■ are in place as shown.

I further certify that the requirements of section 60, article 17, of the annotated code of Maryland (As Amended) as far as they relate to the making of this plat have been complied with.

by Carl H. Ritzel June 20, 1967
DATE
5361
Reg. No.

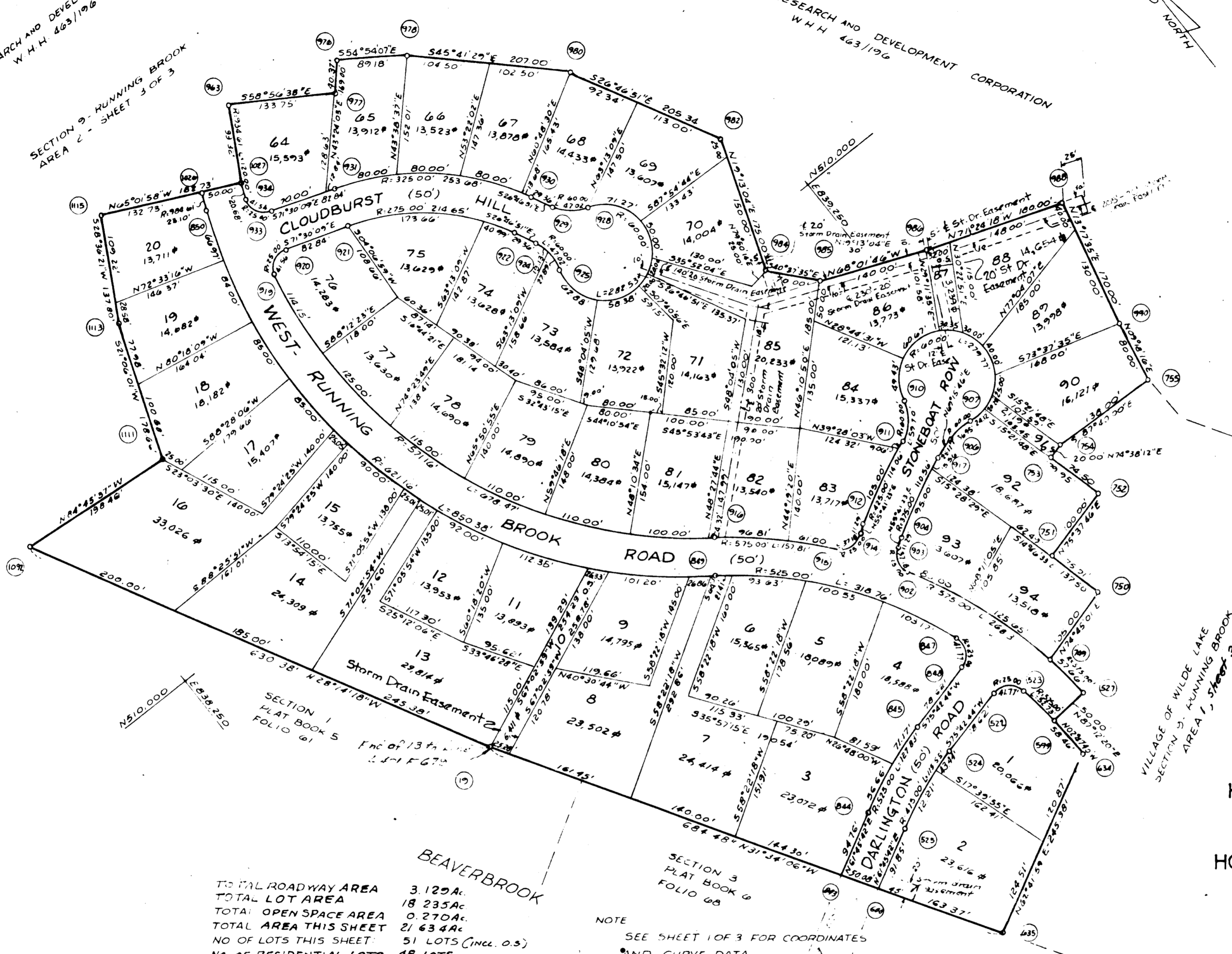
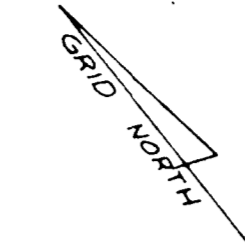
CONSOER TOWNSEND & ASSOCIATES

CONSULTING ENGINEERS

COLUMBIA MARYLAND

HOWARD RESEARCH AND DEVELOPMENT CORPORATION
W. H. H. 463/1966

HOWARD RESEARCH AND DEVELOPMENT CORPORATION
W. H. H. 463/1966



TOTAL ROADWAY AREA 3.129 Ac.
TOTAL LOT AREA 18.235 Ac.
TOTAL OPEN SPACE AREA 0.270 Ac.
TOTAL AREA THIS SHEET 21.634 Ac.
NO. OF LOTS THIS SHEET 51 LOTS (INCL. O.S.)
NO. OF RESIDENTIAL LOTS 48 LOTS

NOTE
SEE SHEET 1 OF 3 FOR COORDINATES
AND CURVE DATA

RECORDED PLAT BOOK 13 FOLIO 23
ON 12/21 1967 AMONG THE LAND RECORDS OF
HOWARD COUNTY, MD.

COLUMBIA
THE VILLAGE OF WILDE LAKE
SECTION 9 - RUNNING BROOK
AREA - 2
HOWARD CO. MD. ELECTION DIST. 5
SCALE: 1"=100' JUNE 20, 1967
OWNER & DEVELOPER
HOWARD RESEARCH & DEVELOPMENT CORP.
THE VILLAGE OF CROSS KEYS
BALTIMORE MARYLAND
CONSOER TOWNSEND & ASSOCIATES
CONSULTING ENGINEERS
COLUMBIA MARYLAND

SHEET 2 OF 3

APPROVED: FOR PUBLIC WATER AND PUBLIC SEWERAGE SYSTEMS, HOWARD COUNTY HEALTH DEPARTMENT

County Health Officer _____ Date _____

APPROVED: HOWARD COUNTY PLANNING COMM.

Chairman _____ Date 11-21-67

Director _____ Date 12-21-67

APPROVED: HOWARD COUNTY ROADS DEPARTMENT

Roads Superintendent _____ Date 11-21-67

APPROVED: HOWARD COUNTY METROPOLITAN COMM.

Chief Engineer _____ Date _____

OWNERS CERTIFICATE:

We, the "Howard Research & Development Corporation" owners of the property shown and described hereon adopt this plan of subdivision, and reserve the fee simple title to the beds of the streets and/or roads shown hereon, and in consideration of the approval of the plat by the Planning Commission of Howard County, Maryland, we ourselves, our heirs, or assigns do hereby grant unto The Board of County Commissioners of Howard County, the right and option to acquire for the consideration of one dollar, the fee simple title to the beds of the streets and/or roads shown hereon within the period of five years from the date of the recording of this plat among the land records of Howard County, Maryland.

Witness our hand and seal this 3rd day of July, 1967

THE HOWARD RESEARCH AND DEVELOPMENT CORPORATION
ATTEST _____
BY _____
AGENT

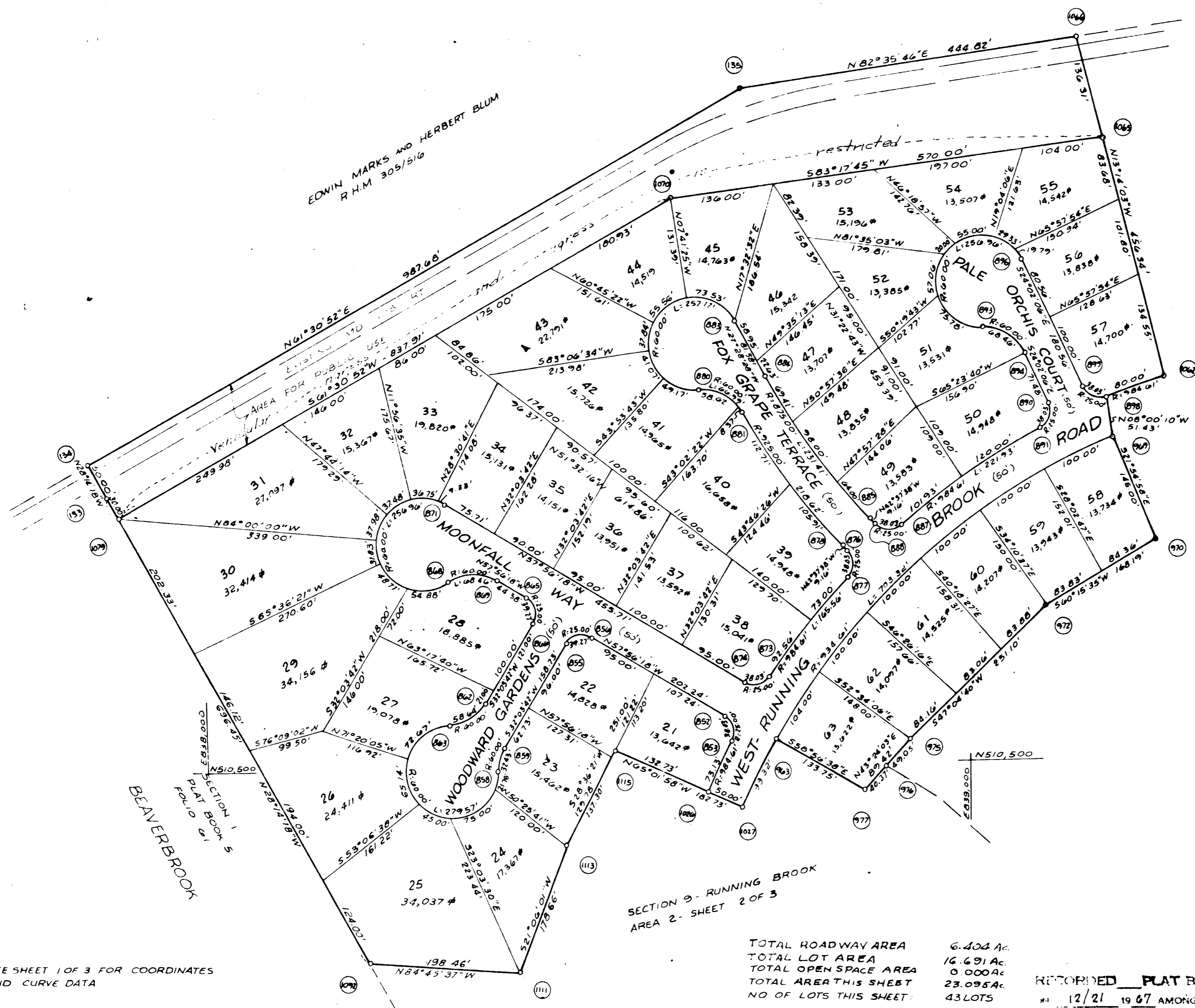
SURVEYORS CERTIFICATE

I, CARL H. RITZEL, hereby certify that the plan shown hereon is correct, that it is a subdivision of part of the land which by deed dated DECEMBER 13, 1966 and recorded among the land records of Howard County, Maryland in Liber 463 at Folio 196 was granted and conveyed by C. AILEEN AMES to Howard Research and Development Corporation, and that stones and monuments marked thus ■ are in place as shown.

I further certify that the requirements of section 60, article 17, of the annotated code of Maryland (As Amended) as far as they relate to the making of this plat have been complied with.

Carl H. Ritzel June 20, 1967 5361
DATE Reg. No.

CONSOER TOWNSEND & ASSOCIATES
CONSULTING ENGINEERS
COLUMBIA, MARYLAND



EDWIN MARKS AND HERBERT BLUM
R.H.M. 305/516

HOWARD RESEARCH AND DEVELOPMENT CORPORATION
W.H.H. 463/196

COLUMBIA
THE VILLAGE OF WILDE LAKE
SECTION 9 - RUNNING BROOK
AREA-2

HOWARD CO. MD. ELECTION DIST. 5
SCALE: 1"=100' JUNE 20, 1967
OWNER & DEVELOPER
HOWARD RESEARCH & DEVELOPMENT CORP.
THE VILLAGE OF CROSS KEYS
BALTIMORE MARYLAND
CONSIGNED BY
CONSOER TOWNSEND & ASSOCIATES
CONSULTING ENGINEERS
COLUMBIA MARYLAND

NOTE
SEE SHEET 1 OF 3 FOR COORDINATES
AND CURVE DATA

TOTAL ROADWAY AREA 6.404 Ac.
TOTAL LOT AREA 16.691 Ac.
TOTAL OPEN SPACE AREA 0.000 Ac.
TOTAL AREA THIS SHEET 23.095 Ac.
NO OF LOTS THIS SHEET 43 LOTS

RECORDED PLAT BOOK 13 FOLIO 77
ON 12/21 1967 AMONG THE LAND RECORDS OF
HOWARD COUNTY, MD.

SHEET 3 OF 3

APPROVED: FOR PUBLIC WATER AND PUBLIC SEWERAGE SYSTEMS, HOWARD COUNTY HEALTH DEPARTMENT	
County Health Officer	Date
APPROVED: HOWARD COUNTY PLANNING COMM.	
Chairman	Date
Director	Date
APPROVED: HOWARD COUNTY ROADS DEPARTMENT	
Roads Superintendent	Date
APPROVED: HOWARD COUNTY METROPOLITAN COMM.	
Chief Engineer	Date

OWNERS CERTIFICATE:
We, the "Howard Research & Development Corporation" owners of the property shown and described hereon adopt this plan of subdivision, and reserve the fee simple title to the beds of the streets and/or roads shown hereon, and in consideration of the approval of the plat by The Planning Commission of Howard County, Maryland, we ourselves, our heirs, or assigns do hereby grant unto The Board of County Commissioners of Howard County, the right and option to acquire for the consideration of one dollar, the fee simple title to the beds of the streets and/or roads shown hereon within the period of five years from the date of the recording of this plat among the land records of Howard County, Maryland.
Witness our hand and seal this 20th day of June, 1967
THE HOWARD RESEARCH AND DEVELOPMENT CORPORATION
ATTEST: _____
by Norman W. Schell AUTHORIZED AGENT

SURVEYORS CERTIFICATE
I, CARL H. RITZEL, hereby certify that the plan shown hereon is correct, that it is a subdivision of part of the land which by deed dated DECEMBER 13, 1966 and recorded among the land records of Howard County, Maryland in Liber 463 at Folio 196 was granted and conveyed by C AILEEN AMES to Howard Research and Development Corporation, and that stones and monuments marked thus ■ are in place as shown.
I further certify that the requirements of section 60, article 17, of the annotated code of Maryland (As Amended) as far as they relate to the making of this plat have been complied with.
Carl H. Ritzel June 20, 1967 5361
DATE Reg. No.

CONSOER TOWNSEND & ASSOCIATES
CONSULTING ENGINEERS
COLUMBIA, MARYLAND