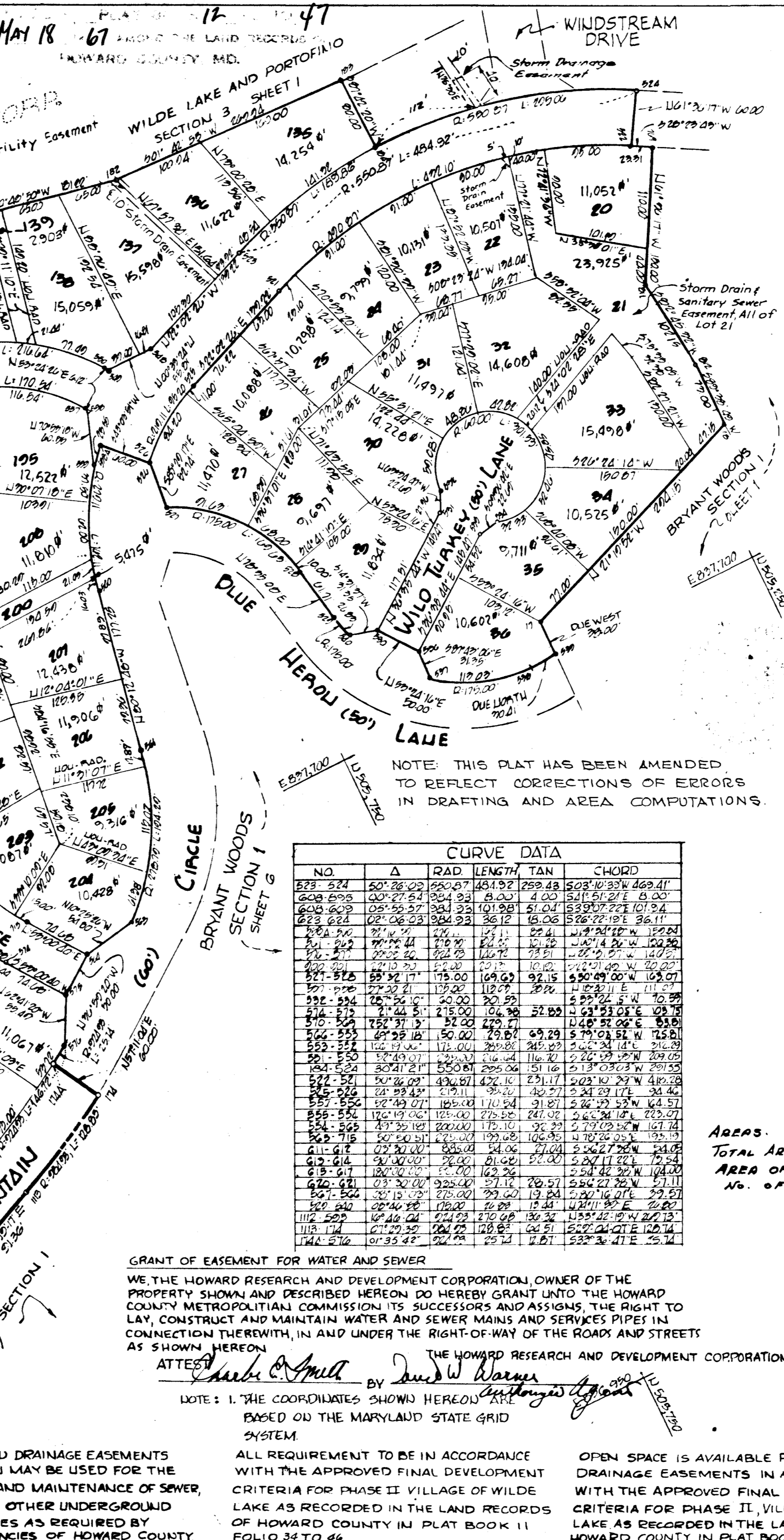




NO	NORTH	EAST	NO	NORTH	EAST
101	800283.00	827244.00	101	800283.00	827244.00
102	800283.00	827244.00	102	800283.00	827244.00
103	800283.00	827244.00	103	800283.00	827244.00
104	800283.00	827244.00	104	800283.00	827244.00
105	800283.00	827244.00	105	800283.00	827244.00
106	800283.00	827244.00	106	800283.00	827244.00
107	800283.00	827244.00	107	800283.00	827244.00
108	800283.00	827244.00	108	800283.00	827244.00
109	800283.00	827244.00	109	800283.00	827244.00
110	800283.00	827244.00	110	800283.00	827244.00
111	800283.00	827244.00	111	800283.00	827244.00
112	800283.00	827244.00	112	800283.00	827244.00
113	800283.00	827244.00	113	800283.00	827244.00
114	800283.00	827244.00	114	800283.00	827244.00
115	800283.00	827244.00	115	800283.00	827244.00
116	800283.00	827244.00	116	800283.00	827244.00
117	800283.00	827244.00	117	800283.00	827244.00
118	800283.00	827244.00	118	800283.00	827244.00
119	800283.00	827244.00	119	800283.00	827244.00
120	800283.00	827244.00	120	800283.00	827244.00
121	800283.00	827244.00	121	800283.00	827244.00
122	800283.00	827244.00	122	800283.00	827244.00
123	800283.00	827244.00	123	800283.00	827244.00
124	800283.00	827244.00	124	800283.00	827244.00
125	800283.00	827244.00	125	800283.00	827244.00
126	800283.00	827244.00	126	800283.00	827244.00
127	800283.00	827244.00	127	800283.00	827244.00
128	800283.00	827244.00	128	800283.00	827244.00
129	800283.00	827244.00	129	800283.00	827244.00
130	800283.00	827244.00	130	800283.00	827244.00
131	800283.00	827244.00	131	800283.00	827244.00
132	800283.00	827244.00	132	800283.00	827244.00
133	800283.00	827244.00	133	800283.00	827244.00
134	800283.00	827244.00	134	800283.00	827244.00
135	800283.00	827244.00	135	800283.00	827244.00
136	800283.00	827244.00	136	800283.00	827244.00
137	800283.00	827244.00	137	800283.00	827244.00
138	800283.00	827244.00	138	800283.00	827244.00
139	800283.00	827244.00	139	800283.00	827244.00
140	800283.00	827244.00	140	800283.00	827244.00
141	800283.00	827244.00	141	800283.00	827244.00
142	800283.00	827244.00	142	800283.00	827244.00
143	800283.00	827244.00	143	800283.00	827244.00
144	800283.00	827244.00	144	800283.00	827244.00
145	800283.00	827244.00	145	800283.00	827244.00
146	800283.00	827244.00	146	800283.00	827244.00
147	800283.00	827244.00	147	800283.00	827244.00
148	800283.00	827244.00	148	800283.00	827244.00
149	800283.00	827244.00	149	800283.00	827244.00
150	800283.00	827244.00	150	800283.00	827244.00
151	800283.00	827244.00	151	800283.00	827244.00
152	800283.00	827244.00	152	800283.00	827244.00
153	800283.00	827244.00	153	800283.00	827244.00
154	800283.00	827244.00	154	800283.00	827244.00
155	800283.00	827244.00	155	800283.00	827244.00
156	800283.00	827244.00	156	800283.00	827244.00
157	800283.00	827244.00	157	800283.00	827244.00
158	800283.00	827244.00	158	800283.00	827244.00
159	800283.00	827244.00	159	800283.00	827244.00
160	800283.00	827244.00	160	800283.00	827244.00
161	800283.00	827244.00	161	800283.00	827244.00
162	800283.00	827244.00	162	800283.00	827244.00
163	800283.00	827244.00	163	800283.00	827244.00
164	800283.00	827244.00	164	800283.00	827244.00
165	800283.00	827244.00	165	800283.00	827244.00
166	800283.00	827244.00	166	800283.00	827244.00
167	800283.00	827244.00	167	800283.00	827244.00
168	800283.00	827244.00	168	800283.00	827244.00
169	800283.00	827244.00	169	800283.00	827244.00
170	800283.00	827244.00	170	800283.00	827244.00
171	800283.00	827244.00	171	800283.00	827244.00
172	800283.00	827244.00	172	800283.00	827244.00
173	800283.00	827244.00	173	800283.00	827244.00
174	800283.00	827244.00	174	800283.00	827244.00
175	800283.00	827244.00	175	800283.00	827244.00
176	800283.00	827244.00	176	800283.00	827244.00
177	800283.00	827244.00	177	800283.00	827244.00
178	800283.00	827244.00	178	800283.00	827244.00
179	800283.00	827244.00	179	800283.00	827244.00
180	800283.00	827244.00	180	800283.00	827244.00
181	800283.00	827244.00	181	800283.00	827244.00
182	800283.00	827244.00	182	800283.00	827244.00
183	800283.00	827244.00	183	800283.00	827244.00
184	800283.00	827244.00	184	800283.00	827244.00
185	800283.00	827244.00	185	800283.00	827244.00
186	800283.00	827244.00	186	800283.00	827244.00
187	800283.00	827244.00	187	800283.00	827244.00
188	800283.00	827244.00	188	800283.00	827244.00
189	800283.00	827244.00	189	800283.00	827244.00
190	800283.00	827244.00	190	800283.00	827244.00
191	800283.00	827244.00	191	800283.00	827244.00
192	800283.00	827244.00	192	800283.00	827244.00
193	800283.00	827244.00	193	800283.00	827244.00
194	800283.00	827244.00	194	800283.00	827244.00
195	800283.00	827244.00	195	800283.00	827244.00
196	800283.00	827244.00	196	800283.00	827244.00
197	800283.00	827244.00	197	800283.00	827244.00
198	800283.00	827244.00	198	800283.00	827244.00
199	800283.00	827244.00	199	800283.00	827244.00
200	800283.00	827244.00	200	800283.00	827244.00
201	800283.00	827244.00	201	800283.00	827244.00
202	800283.00	827244.00	202	800283.00	827244.00
203	800283.00	827244.00	203	800283.00	827244.00
204	800283.00	827244.00	204	800283.00	827244.00
205	800283.00	827244.00	205	800283.00	827244.00
206	800283.00	827244.00	206	800283.00	827244.00
207	800283.00	827244.00	207	800283.00	827244.00
208	800283.00	827244.00	208	800283.00	827244.00
209	800283.00	827244.00	209	800283.00	827244.00
210	800283.00	827244.00	210	800283.00	827244.00
211	800283.00	827244.00	211	800283.00	827244.00
212	800283.00	827244.00	212	800283.00	827244.00
213	800283.00	827244.00	213	800283.00	827244.00
214	800283.00	827244.00	214	800283.00	827244.00
215	800283.00	827244.00	215	800283.00	827244.00
216	800283.00	827244.00	216	800283.00	827244.00
217	800283.00	827244.00	217	800283.00	827244.00
218	800283.00	827244.00	218	800283.00	827244.00
219	800283.00	827244.00	219	800283.00	827244.00
220	800283.00	827244.00	220	800283.00	827244.00

NOTE: THIS FINAL RECORD PLAT SUPERSEDES THE FINAL RECORD PLAT PREVIOUSLY RECORDED ON FEB. 27, 1967 IN LIBER 12 AT FOLIO 16, OF THE LAND RECORDS OF HOWARD COUNTY, SAID PLAT IS HEREBY DECLARED NULL AND VOID OF NO FURTHER EFFECT.



NO.	Δ	RAD.	LENGTH	TAN	CHORD
132-133	20° 26' 22"	550.87	484.92	259.48	508.10
133-134	100° 22' 54"	184.82	81.03	4.00	84.18
134-135	02° 55' 57"	324.32	101.98	51.04	109.77
135-136	02° 02' 23"	324.23	36.12	13.08	37.72
136-137	21° 14' 51"	224.11	151.11	82.41	184.22
137-138	77° 19' 44"	210.90	101.39	101.39	101.39
138-139	22° 25' 26"	324.09	146.72	78.51	164.25
139-140	11° 15' 33"	550.87	102.10	102.10	102.10
140-141	55° 32' 17"	175.00	169.69	92.15	190.49
141-142	102° 22' 41"	184.82	112.59	58.28	148.34
142-143	25° 58' 40"	210.90	102.59	102.59	102.59
143-144	71° 44' 51"	215.00	104.36	52.82	113.53
144-145	25° 37' 13"	324.09	279.77	146.52	352.06
145-146	48° 29' 12"	50.00	29.84	6.92	31.98
146-147	104° 19' 41"	175.00	249.88	249.88	249.88
147-148	30° 49' 07"	324.09	116.30	57.28	129.09
148-149	30° 41' 21"	550.87	295.04	151.10	313.03
149-150	32° 22' 02"	490.87	432.10	181.17	482.39
150-151	74° 23' 43"	210.90	102.59	102.59	102.59
151-152	67° 49' 07"	184.82	110.84	91.87	124.57
152-153	12° 19' 06"	125.00	275.38	241.02	266.24
153-154	43° 29' 18"	220.00	175.10	96.29	199.02
154-155	50° 20' 51"	220.00	199.88	106.85	218.35
155-156	07° 30' 00"	825.00	54.06	71.04	55.27
156-157	30° 30' 00"	200.00	81.06	81.06	81.06
157-158	128° 10' 29"	55.00	123.26	5.84	129.10
158-159	03° 13' 02"	925.00	27.18	29.57	54.23
159-160	23° 13' 02"	275.00	29.00	19.84	30.16
160-161	20° 14' 51"	184.82	101.39	101.39	101.39
161-162	18° 46' 04"	244.92	270.08	136.32	335.42
162-163	01° 35' 42"	224.09	128.82	66.51	135.24
163-164	01° 35' 42"	224.09	25.24	10.81	26.34



COORDINATED				CURVE DATA			
NO.	LENGTH	EAST	NO.	LENGTH	EAST	NO.	ANGLE
1	504867.11	037126.49	217	200999.06	000200.01	1	20°09'30"
2	524784.34	037004.31	220	200907.00	000199.06	2	20°10'00"
3	545111.75	036882.17	223	200815.00	000198.02	3	20°10'30"
4	504510.73	036760.04	226	200723.00	000197.00	4	20°11'00"
5	504510.73	036637.91	229	200631.00	000196.00	5	20°11'30"
6	504510.73	036515.78	232	200539.00	000195.00	6	20°12'00"
7	504510.73	036393.65	235	200447.00	000194.00	7	20°12'30"
8	504510.73	036271.52	238	200355.00	000193.00	8	20°13'00"
9	504510.73	036149.39	241	200263.00	000192.00	9	20°13'30"
10	504510.73	036027.26	244	200171.00	000191.00	10	20°14'00"
11	504510.73	035905.13	247	200079.00	000190.00	11	20°14'30"
12	504510.73	035783.00	250	200000.00	000190.00	12	20°15'00"
13	504510.73	035660.87	253	199921.00	000190.00	13	20°15'30"
14	504510.73	035538.74	256	199842.00	000190.00	14	20°16'00"
15	504510.73	035416.61	259	199763.00	000190.00	15	20°16'30"
16	504510.73	035294.48	262	199684.00	000190.00	16	20°17'00"
17	504510.73	035172.35	265	199605.00	000190.00	17	20°17'30"
18	504510.73	035050.22	268	199526.00	000190.00	18	20°18'00"
19	504510.73	034928.09	271	199447.00	000190.00	19	20°18'30"
20	504510.73	034805.96	274	199368.00	000190.00	20	20°19'00"
21	504510.73	034683.83	277	199289.00	000190.00	21	20°19'30"
22	504510.73	034561.70	280	199210.00	000190.00	22	20°20'00"
23	504510.73	034439.57	283	199131.00	000190.00	23	20°20'30"
24	504510.73	034317.44	286	199052.00	000190.00	24	20°21'00"
25	504510.73	034195.31	289	198973.00	000190.00	25	20°21'30"
26	504510.73	034073.18	292	198894.00	000190.00	26	20°22'00"
27	504510.73	033951.05	295	198815.00	000190.00	27	20°22'30"
28	504510.73	033828.92	298	198736.00	000190.00	28	20°23'00"
29	504510.73	033706.79	301	198657.00	000190.00	29	20°23'30"
30	504510.73	033584.66	304	198578.00	000190.00	30	20°24'00"
31	504510.73	033462.53	307	198499.00	000190.00	31	20°24'30"
32	504510.73	033340.40	310	198420.00	000190.00	32	20°25'00"
33	504510.73	033218.27	313	198341.00	000190.00	33	20°25'30"
34	504510.73	033096.14	316	198262.00	000190.00	34	20°26'00"
35	504510.73	032974.01	319	198183.00	000190.00	35	20°26'30"
36	504510.73	032851.88	322	198104.00	000190.00	36	20°27'00"
37	504510.73	032729.75	325	198025.00	000190.00	37	20°27'30"
38	504510.73	032607.62	328	197946.00	000190.00	38	20°28'00"
39	504510.73	032485.49	331	197867.00	000190.00	39	20°28'30"
40	504510.73	032363.36	334	197788.00	000190.00	40	20°29'00"
41	504510.73	032241.23	337	197709.00	000190.00	41	20°29'30"
42	504510.73	032119.10	340	197630.00	000190.00	42	20°30'00"
43	504510.73	032000.00	343	197551.00	000190.00	43	20°30'30"
44	504510.73	031880.90	346	197472.00	000190.00	44	20°31'00"
45	504510.73	031761.80	349	197393.00	000190.00	45	20°31'30"
46	504510.73	031642.70	352	197314.00	000190.00	46	20°32'00"
47	504510.73	031523.60	355	197235.00	000190.00	47	20°32'30"
48	504510.73	031404.50	358	197156.00	000190.00	48	20°33'00"
49	504510.73	031285.40	361	197077.00	000190.00	49	20°33'30"
50	504510.73	031166.30	364	197000.00	000190.00	50	20°34'00"
51	504510.73	031047.20	367	196921.00	000190.00	51	20°34'30"
52	504510.73	030928.10	370	196842.00	000190.00	52	20°35'00"
53	504510.73	030809.00	373	196763.00	000190.00	53	20°35'30"
54	504510.73	030690.00	376	196684.00	000190.00	54	20°36'00"
55	504510.73	030571.00	379	196605.00	000190.00	55	20°36'30"
56	504510.73	030452.00	382	196526.00	000190.00	56	20°37'00"
57	504510.73	030333.00	385	196447.00	000190.00	57	20°37'30"
58	504510.73	030214.00	388	196368.00	000190.00	58	20°38'00"
59	504510.73	030095.00	391	196289.00	000190.00	59	20°38'30"
60	504510.73	030000.00	394	196210.00	000190.00	60	20°39'00"

**GRANT OF EASEMENT FOR WATER AND SEWER**  
 WE, THE HOWARD RESEARCH AND DEVELOPMENT CORPORATION, OWNER OF THE PROPERTY SHOWN AND DESCRIBED HEREON DO HEREBY GRANT UNTO THE HOWARD COUNTY METROPOLITAN COMMISSION, ITS SUCCESSORS AND ASSIGNS, THE RIGHT TO LAY, CONSTRUCT AND MAINTAIN WATER AND SEWER MAINS AND SERVICES PIPES IN CONNECTION THEREWITH, IN AND UNDER THE RIGHT-OF-WAY OF THE ROADS AND STREETS AS SHOWN HEREON.

ATTEST:  
 THE HOWARD RESEARCH AND DEVELOPMENT CORPORATION  
*Charles E. Smith* BY *Dwight Warner*  
 Secretary of Corp.

**OWNERS CERTIFICATE:**  
 WE, THE HOWARD RESEARCH AND DEVELOPMENT CORP. OWNERS OF THE PROPERTY SHOWN AND DESCRIBED HEREON, ADOPT THIS PLAN OF SUBDIVISION AND RESERVE THE FEE SIMPLE TITLE TO THE DEEPS OF THE STREETS AND/OR ROADS SHOWN HEREON AND IN CONSIDERATION OF THE APPROVAL OF THIS PLAN BY THE PLANNING COMMISSION OF HOWARD COUNTY, MARYLAND WE FOR OURSELVES OUR HEIRS OR ASSIGNS, DO HEREBY GIVE AND GRANT UNTO THE BOARD OF COUNTY COMMISSIONERS THE RIGHT AND OPTION TO ACQUIRE FOR THE CONSIDERATION OF ONE DOLLAR, THE FEE SIMPLE TITLE TO THE DEEPS OF THE STREETS AND/OR ROADS SHOWN HEREON WITHIN THE PERIOD OF FIVE YEARS FROM THE RECORDING OF THIS PLAN ALONG THE LAND RECORDS OF HOWARD COUNTY, MARYLAND. WITNESS OUR HANDS AND SEALS THIS 13 DAY OF April 1967

BY: *Dwight Warner*  
 Authorized Agent  
 ATTEST: *Charles E. Smith*

**SURVEYORS CERTIFICATE:**  
 I, RUSSELL E. LOWMAN HEREBY CERTIFY THAT THE PLAN SHOWN HEREON IS CORRECT AND IS A SUBDIVISION OF PART OF THE LAND WHICH BY DEED DATED OCTOBER 14, 1955 AND RECORDED ALONG THE LAND RECORDS OF HOWARD COUNTY, MARYLAND, IN LIBER WITH. 000 FOLIO 0 WAS GRANTED AND CONVEYED BY G. E. S. ELLERPRIDES TO THE HOWARD RESEARCH AND DEVELOPMENT CORP. AND ALSO PART OF THE LAND WHICH BY DEED DATED JULY 7, 1955 AND RECORDED ALONG THE LAND RECORDS OF HOWARD COUNTY, MARYLAND IN LIBER WITH. 801 FOLIO 250 WAS GRANTED AND CONVEYED BY TOWN AND COUNCIL HOMER INC. TO THE HOWARD RESEARCH AND DEVELOPMENT CORP. AND THAT STAKES AND/OR MONUMENTS MARKED THIS DATE IN PLACE AS SHOWN.

I FURTHER CERTIFY THAT THE REQUIREMENTS OF SECTION 60, ARTICLE 17 OF THE ANNOTATED CODE OF MARYLAND (AS AMENDED) AS FAR AS THEY RELATE TO THE MAKING OF THIS PLAN, HAVE BEEN COMPLIED WITH.  
*Russell E. Lowman* 3-23-67  
 RUSSELL E. LOWMAN REG. L.S. 05 9017 DATE

APPROVED: HOWARD COUNTY HEALTH DEPT. FOR PUBLIC WATER AND PUBLIC SEWER SYSTEM  
*Thomas L. Harris, Jr.* 4-27-67  
 COUNTY HEALTH OFFICER DATE

APPROVED: HOWARD COUNTY PLANNING COMMISSION  
*Thomas L. Harris, Jr.* 4-29-67  
 CHAIRMAN DATE

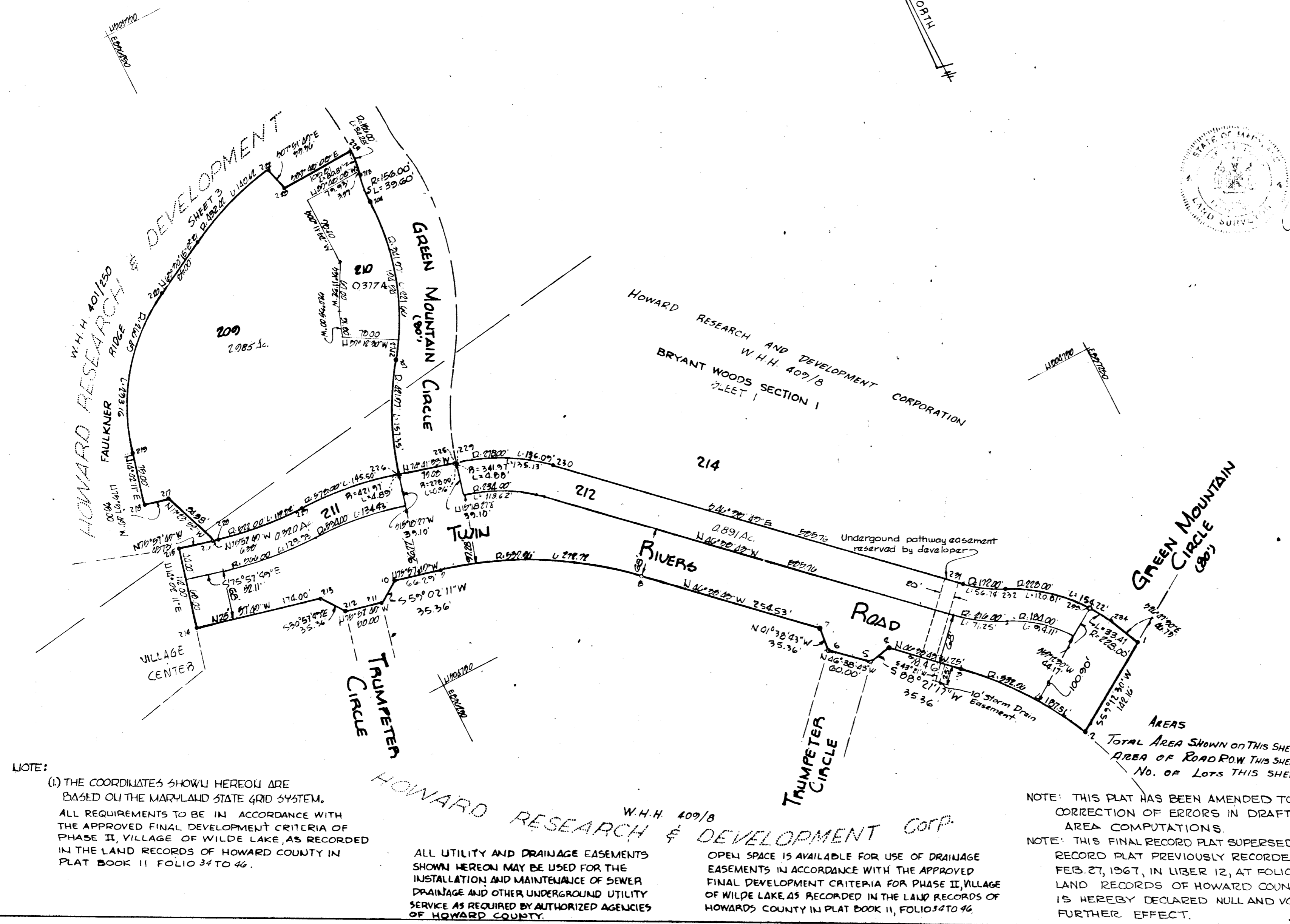
APPROVED: HOWARD COUNTY PRODDS DEPARTMENT  
*Herman S. O'Neill* 4-28-67  
 ROADS SUPERINTENDENT DATE

APPROVED: HOWARD COUNTY METROPOLITAN COMMISSION  
*W. O. Gilbert* 4-28-67  
 CHIEF ENGINEER DATE

RECORDED PLAT BOOK 12 FOLIO 49  
 MAY 18 1967 AMONG THE LAND RECORDS OF HOWARD COUNTY, MD.

AMENDED PLAT  
**COLUMBIA**  
 VILLAGE OF WILDE LAKE SUBDIVISION SECTION I BRYANT WOODS

FIFTH ELECTION DIST HOWARD COUNTY, MD  
 SCALE 1"=100' MAY 7, 1967  
 THE HOWARD RESEARCH & DEVELOPMENT CORP.  
 THE VILLAGE OF CROSS KEYS BALTIMORE, MD.  
 C. D. MESSICK JR., AND ASSOCIATES INC.  
 CONSULTING ENGINEERS AND LAND SURVEYORS  
 21 WEST STREET ANNAPOLIS, MARYLAND



**NOTE:**  
 (1) THE COORDINATES SHOWN HEREON ARE BASED ON THE MARYLAND STATE GRID SYSTEM, ALL REQUIREMENTS TO BE IN ACCORDANCE WITH THE APPROVED FINAL DEVELOPMENT CRITERIA OF PHASE II, VILLAGE OF WILDE LAKE, AS RECORDED IN THE LAND RECORDS OF HOWARD COUNTY IN PLAT BOOK 11 FOLIO 34 TO 46.

ALL UTILITY AND DRAINAGE EASEMENTS SHOWN HEREON MAY BE USED FOR THE INSTALLATION AND MAINTENANCE OF SEWER DRAINAGE AND OTHER UNDERGROUND UTILITY SERVICE AS REQUIRED BY AUTHORIZED AGENCIES OF HOWARD COUNTY.

OPEN SPACE IS AVAILABLE FOR USE OF DRAINAGE EASEMENTS IN ACCORDANCE WITH THE APPROVED FINAL DEVELOPMENT CRITERIA FOR PHASE II, VILLAGE OF WILDE LAKE AS RECORDED IN THE LAND RECORDS OF HOWARD COUNTY IN PLAT BOOK 11, FOLIOS 34 TO 46.

**NOTE:** THIS PLAT HAS BEEN AMENDED TO REFLECT CORRECTION OF ERRORS IN DRAFTING AND AREA COMPUTATIONS.  
**NOTE:** THIS FINAL RECORD PLAT SUPERSEDES THE FINAL RECORD PLAT PREVIOUSLY RECORDED ON FEB. 27, 1967, IN LIBER 12, AT FOLIO 18, OF THE LAND RECORDS OF HOWARD COUNTY, SAID PLAT IS HEREBY DECLARED NULL AND VOID AND OF NO FURTHER EFFECT.

COORDINATES					
NO	NORTH	EAST	NO	NORTH	EAST
1	807034.77	827134.95	10	807112.32	827092.72
2	807048.05	827152.02	11	807112.32	827092.72
3	807061.33	827169.09	12	807112.32	827092.72
4	807074.61	827186.16	13	807112.32	827092.72
5	807087.89	827203.23	14	807112.32	827092.72
6	807101.17	827220.30	15	807112.32	827092.72
7	807114.45	827237.37	16	807112.32	827092.72
8	807127.73	827254.44	17	807112.32	827092.72
9	807141.01	827271.51	18	807112.32	827092.72
10	807154.29	827288.58	19	807112.32	827092.72
11	807167.57	827305.65	20	807112.32	827092.72
12	807180.85	827322.72	21	807112.32	827092.72
13	807194.13	827339.79	22	807112.32	827092.72
14	807207.41	827356.86	23	807112.32	827092.72
15	807220.69	827373.93	24	807112.32	827092.72
16	807233.97	827391.00	25	807112.32	827092.72
17	807247.25	827408.07	26	807112.32	827092.72
18	807260.53	827425.14	27	807112.32	827092.72
19	807273.81	827442.21	28	807112.32	827092.72
20	807287.09	827459.28	29	807112.32	827092.72
21	807300.37	827476.35	30	807112.32	827092.72
22	807313.65	827493.42	31	807112.32	827092.72
23	807326.93	827510.49	32	807112.32	827092.72
24	807340.21	827527.56	33	807112.32	827092.72
25	807353.49	827544.63	34	807112.32	827092.72
26	807366.77	827561.70	35	807112.32	827092.72
27	807380.05	827578.77	36	807112.32	827092.72
28	807393.33	827595.84	37	807112.32	827092.72
29	807406.61	827612.91	38	807112.32	827092.72
30	807419.89	827630.00	39	807112.32	827092.72
31	807433.17	827647.07	40	807112.32	827092.72
32	807446.45	827664.14	41	807112.32	827092.72
33	807459.73	827681.21	42	807112.32	827092.72
34	807473.01	827698.28	43	807112.32	827092.72
35	807486.29	827715.35	44	807112.32	827092.72
36	807499.57	827732.42	45	807112.32	827092.72
37	807512.85	827749.49	46	807112.32	827092.72
38	807526.13	827766.56	47	807112.32	827092.72
39	807539.41	827783.63	48	807112.32	827092.72
40	807552.69	827800.70	49	807112.32	827092.72
41	807565.97	827817.77	50	807112.32	827092.72
42	807579.25	827834.84	51	807112.32	827092.72
43	807592.53	827851.91	52	807112.32	827092.72
44	807605.81	827868.98	53	807112.32	827092.72
45	807619.09	827886.05	54	807112.32	827092.72
46	807632.37	827903.12	55	807112.32	827092.72
47	807645.65	827920.19	56	807112.32	827092.72
48	807658.93	827937.26	57	807112.32	827092.72
49	807672.21	827954.33	58	807112.32	827092.72
50	807685.49	827971.40	59	807112.32	827092.72
51	807698.77	827988.47	60	807112.32	827092.72
52	807712.05	828005.54	61	807112.32	827092.72
53	807725.33	828022.61	62	807112.32	827092.72
54	807738.61	828039.68	63	807112.32	827092.72
55	807751.89	828056.75	64	807112.32	827092.72
56	807765.17	828073.82	65	807112.32	827092.72
57	807778.45	828090.89	66	807112.32	827092.72
58	807791.73	828107.96	67	807112.32	827092.72
59	807805.01	828125.03	68	807112.32	827092.72
60	807818.29	828142.10	69	807112.32	827092.72
61	807831.57	828159.17	70	807112.32	827092.72
62	807844.85	828176.24	71	807112.32	827092.72
63	807858.13	828193.31	72	807112.32	827092.72
64	807871.41	828210.38	73	807112.32	827092.72
65	807884.69	828227.45	74	807112.32	827092.72
66	807897.97	828244.52	75	807112.32	827092.72
67	807911.25	828261.59	76	807112.32	827092.72
68	807924.53	828278.66	77	807112.32	827092.72
69	807937.81	828295.73	78	807112.32	827092.72
70	807951.09	828312.80	79	807112.32	827092.72
71	807964.37	828329.87	80	807112.32	827092.72
72	807977.65	828346.94	81	807112.32	827092.72
73	807990.93	828364.01	82	807112.32	827092.72
74	808004.21	828381.08	83	807112.32	827092.72
75	808017.49	828398.15	84	807112.32	827092.72
76	808030.77	828415.22	85	807112.32	827092.72
77	808044.05	828432.29	86	807112.32	827092.72
78	808057.33	828449.36	87	807112.32	827092.72
79	808070.61	828466.43	88	807112.32	827092.72
80	808083.89	828483.50	89	807112.32	827092.72
81	808097.17	828500.57	90	807112.32	827092.72
82	808110.45	828517.64	91	807112.32	827092.72
83	808123.73	828534.71	92	807112.32	827092.72
84	808137.01	828551.78	93	807112.32	827092.72
85	808150.29	828568.85	94	807112.32	827092.72
86	808163.57	828585.92	95	807112.32	827092.72
87	808176.85	828602.99	96	807112.32	827092.72
88	808190.13	828620.06	97	807112.32	827092.72
89	808203.41	828637.13	98	807112.32	827092.72
90	808216.69	828654.20	99	807112.32	827092.72
91	808230.00	828671.27	100	807112.32	827092.72

**GRANT OF EASEMENT FOR WATER AND SEWER**

WE, THE HOWARD RESEARCH AND DEVELOPMENT CORPORATION, OWNER OF THE PROPERTY SHOWN AND DESCRIBED HEREON DO HEREBY GRANT UNTO THE HOWARD COUNTY METROPOLITAN COMMISSION, ITS SUCCESSORS AND ASSIGNS, THE RIGHT TO LAY, CONSTRUCT AND MAINTAIN WATER AND SEWER MAINS AND SERVICES PIPES IN CONNECTION THEREWITH, IN AND UNDER THE RIGHT-OF-WAY OF THE ROADS AND STREETS AS SHOWN HEREON.

**NOTE:** THIS PLAT HAS BEEN AMENDED TO REFLECT CORRECTIONS OF ERRORS IN DRAFTING AND AREA COMPUTATIONS.

**NOTE:** THIS FINAL RECORD PLAT SUPERSEDES THE FINAL RECORD PLAT PREVIOUSLY RECORDED ON, FEB 27, 1967, IN LIBER 12, AT FOLIO 19 OF LAND RECORDS OF HOWARD COUNTY, SAID PLAT IS HEREBY DECLARED NULL AND VOID AND OF NO FURTHER EFFECT.

THE HOWARD COUNTY RESEARCH AND DEVELOPMENT CORPORATION

ATTEST: *Charles E. Smith* BY *Daniel W. Warner*  
*Authorizing Agent*

**OWNERS CERTIFICATE:**

WE, THE HOWARD RESEARCH AND DEVELOPMENT CORP. OWNERS OF THE PROPERTY SHOWN AND DESCRIBED HEREON, ADOPT THIS PLAN OF SUBDIVISION AND RESERVE THE FEE SIMPLE TITLE TO THE BEDS OF THE STREETS AND/OR ROADS SHOWN HEREON AND IN CONSIDERATION OF THE APPROVAL OF THIS PLAT BY THE PLANNING COMMISSION OF HOWARD COUNTY, MARYLAND WE FOR OURSELVES OUR HEIRS OR ASSIGNS, DO HEREBY GIVE AND GRANT UNTO THE BOARD OF COUNTY COMMISSIONERS THE RIGHT AND OPTION TO ACQUIRE FOR THE CONSIDERATION OF ONE DOLLAR, THE FEE SIMPLE TITLE TO THE BEDS OF THE STREETS AND/OR ROADS SHOWN HEREON WITHIN THE PERIOD OF FIVE YEARS FROM THE RECORDING OF THIS PLAT ALONG THE LAND RECORDS OF HOWARD COUNTY, MARYLAND, WITNESS OUR HANDS AND SEALS THIS 13 DAY OF April 1967

BY: *Daniel W. Warner*  
*Authorizing Agent*

ATTEST: *Charles E. Smith*

**SURVEYORS CERTIFICATE:**

I, RUSSELL E. LOWMEYER HEREBY CERTIFY THAT THE PLAN SHOWN HEREON IS CORRECT AND IS A SUBDIVISION OF PART OF THE LAND WHICH BY DEED DATED JUNE 7, 1963 AND RECORDED AMONG THE LAND RECORDS OF HOWARD COUNTY, MARYLAND, IN LIBER WILLIAM 201 FOLIO 250 WAS GRANTED AND CONVEYED BY TOWN AND PLANNING HOUSES, INC. TO THE HOWARD RESEARCH AND DEVELOPMENT CORP. AND PART OF PARCEL 2, SCHEDULE A THE LAND WHICH BY DEED DATED MAY 31, 1963 AND RECORDED AMONG THE LAND RECORDS OF HOWARD COUNTY, MARYLAND, IN LIBER WILLIAM 400 FOLIO 715 WAS GRANTED AND CONVEYED BY FARMVILLE DALE INC. TO THE HOWARD RESEARCH AND DEVELOPMENT CORP. AND THAT STAKES AND/OR MONUMENTS MARKED THIS ARE IN PLACE AS SHOWN.

I FURTHER CERTIFY THAT THE REQUIREMENTS OF SECTION 60, ARTICLE 17, OF THE ANNOTATED CODE OF MARYLAND (AS AMENDED) AS FAR AS THEY RELATE TO THE MAKING OF THIS PLAT, HAVE BEEN COMPLIED WITH.

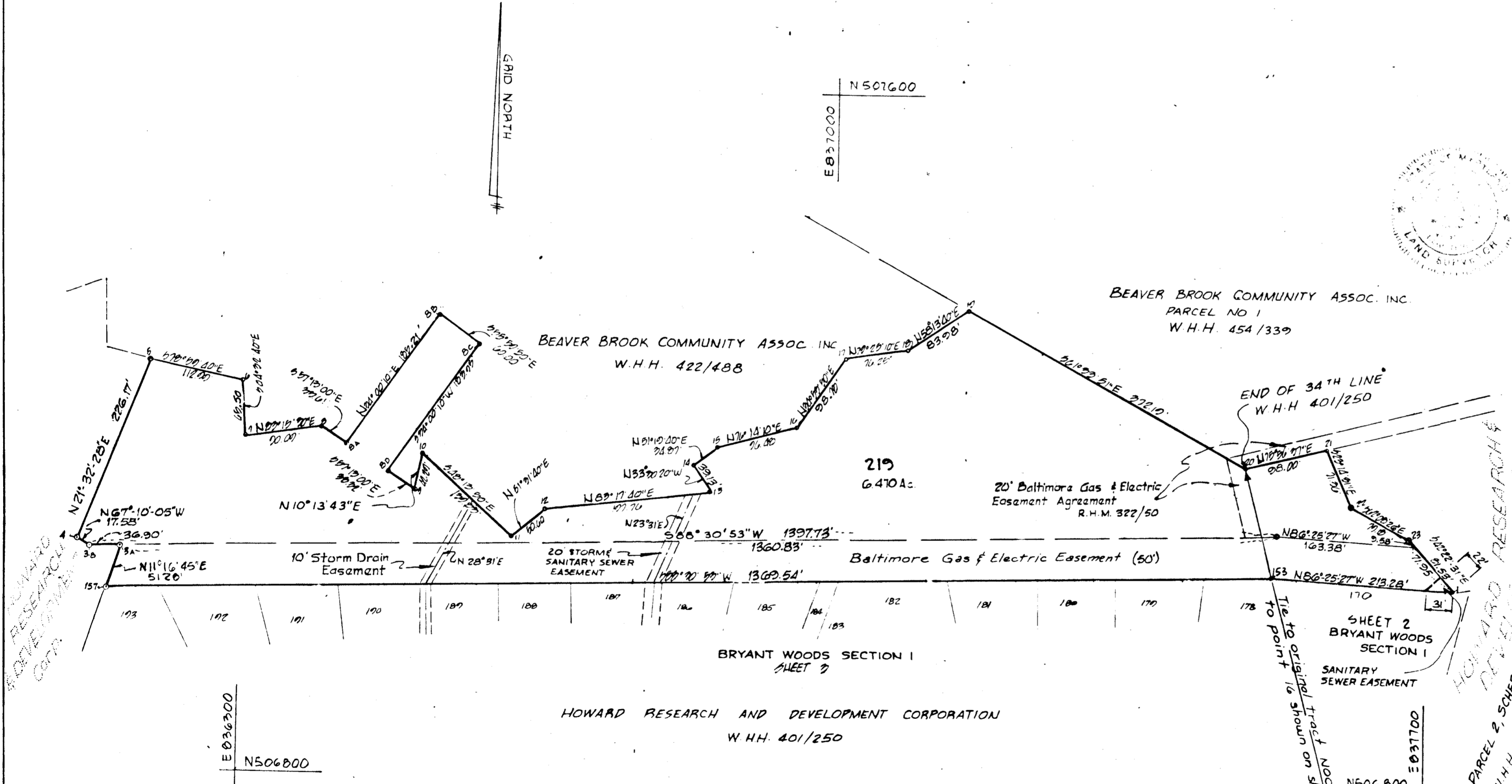
*Russell E. Lowmeyer* 3-23-67  
 RUSSELL E. LOWMEYER REG. L.S. 1967 DATE

APPROVED: HOWARD COUNTY HEALTH DEPT. FOR PUBLIC WATER AND PUBLIC SEWER SYSTEM  
*Theodore R. Jones* 4-27-67  
 COUNTY HEALTH OFFICER DATE

APPROVED: HOWARD COUNTY PLANNING COMMISSION  
*Raymond B. Jones* 4-29-67  
 CHAIRMAN DATE  
*Thomas J. Harris* 5-1-67  
 DIRECTOR DATE

APPROVED: HOWARD COUNTY ROADS DEPARTMENT  
*Therman S. Hall* 4-29-67  
 ROADS SUPERINTENDENT DATE

APPROVED: HOWARD COUNTY METROPOLITAN COMMISSION  
*W. O. Lambert* 4-28-67  
 CHIEF ENGINEER DATE



**NOTE:**

(1) THE COORDINATES SHOWN HEREON ARE BASED ON THE MARYLAND STATE GRID SYSTEM.

ALL REQUIREMENTS TO BE IN ACCORDANCE WITH THE APPROVED FINAL DEVELOPMENT CRITERIA FOR PHASE II VILLAGE OF WILDE LAKE AS RECORDED IN THE LAND RECORDS OF HOWARD COUNTY IN PLAT BOOK 11 FOLIO 34 TO 46.

ALL UTILITY AND DRAINAGE EASEMENTS SHOWN HEREON MAY BE USED FOR THE INSTALLATION AND MAINTENANCE OF SEWER, DRAINAGE AND OTHER UNDERGROUND UTILITY SERVICES AS REQUIRED BY AUTHORIZED AGENCIES OF HOWARD COUNTY.

OPEN SPACE IS AVAILABLE FOR USE OF DRAINAGE EASEMENTS IN ACCORDANCE WITH THE APPROVED FINAL DEVELOPMENT CRITERIA FOR PHASE II, VILLAGE OF WILDE LAKE, AS RECORDED IN THE LAND RECORDS OF HOWARD COUNTY IN PLAT BOOK 11, FOLIO 34 TO 46.

**AREAS**

TOTAL AREA SHOWN ON THIS SHEET: 6.470 AC.

No. OF LOTS THIS SHEET: 1

MAY 18 67  
 12 50  
 HOWARD COUNTY, MD.

AMENDED PLAT

**COLUMBIA**

VILLAGE OF WILDE LAKE SUBDIVISION SECTION I BRYANT WOODS

FIFTH ELECTION DIST. HOWARD COUNTY MD.  
 SCALE: 1"=100' MAY 1, 1967.

THE HOWARD RESEARCH AND DEVELOPMENT CORP.  
 THE VILLAGE OF CROSS KEYS BALTIMORE, MARYLAND 21210

CD MESSICK, JR. AND ASSOCIATES, INC.  
 CONSULTING ENGINEERS & LAND SURVEYORS  
 21 WEST STREET ANNAPOLIS, MARYLAND

AMENDED SHEET 6 OF 7



**SURVEYOR'S CERTIFICATE:**

I, RUSSELL E. LOUIAH HEREBY CERTIFY THAT THE PLAN SHOWN HEREOF IS CORRECT AND IS A SUBDIVISION OF PART OF THE LAND WHICH BY DEED DATED OCTOBER 14, 1963 AND RECORDED AMONG THE LAND RECORDS OF HOWARD COUNTY, MARYLAND IN LIBER W.H.H. 409 FOLIO 5 WAS GRANTED AND CONVEYED BY G.E.S. ENTERPRISES, INC. TO THE HOWARD RESEARCH AND DEVELOPMENT CORP. AND THAT STAKES AND/OR MONUMENTS MARKED THEREON ARE IN PLACE AS SHOWN.

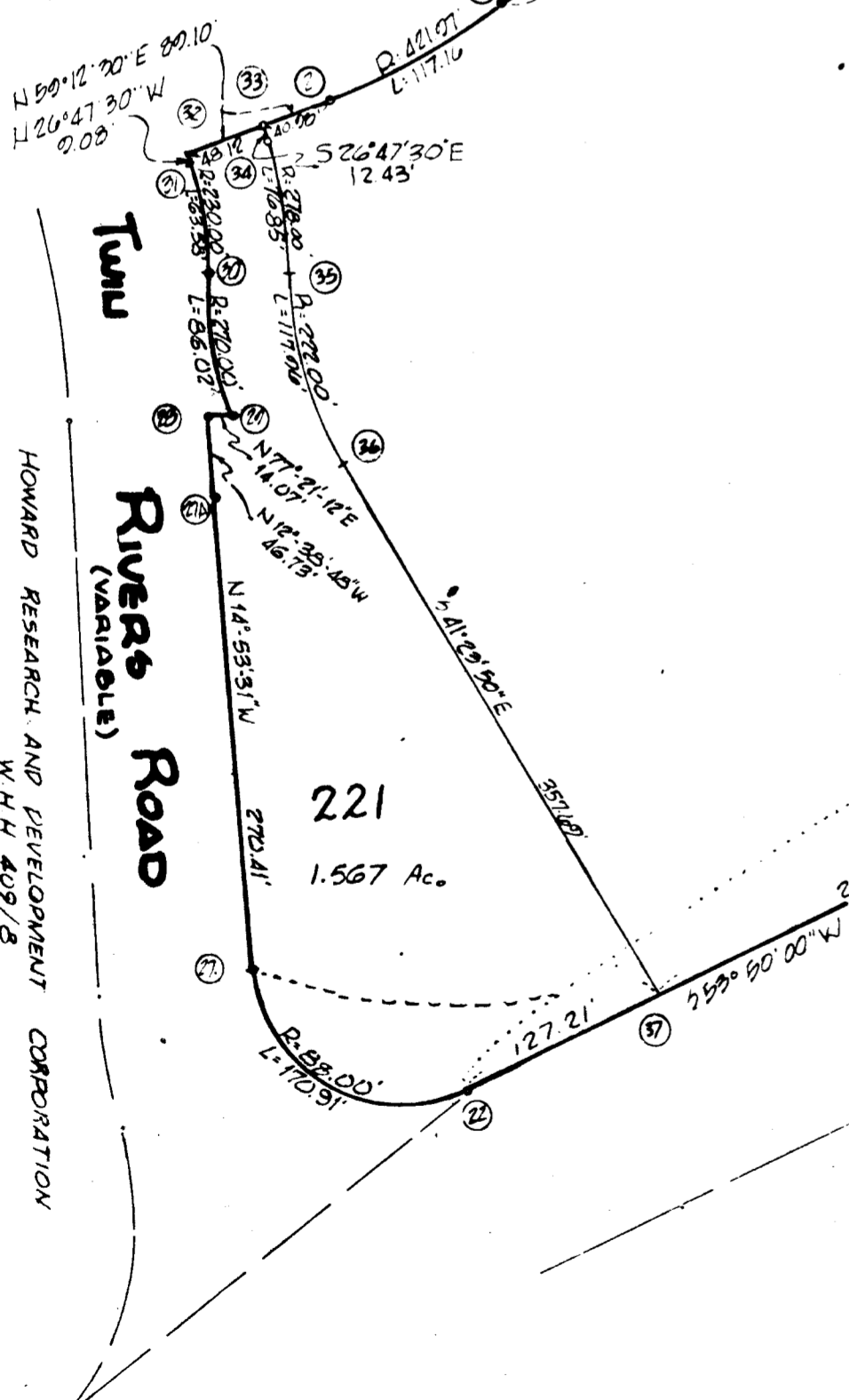
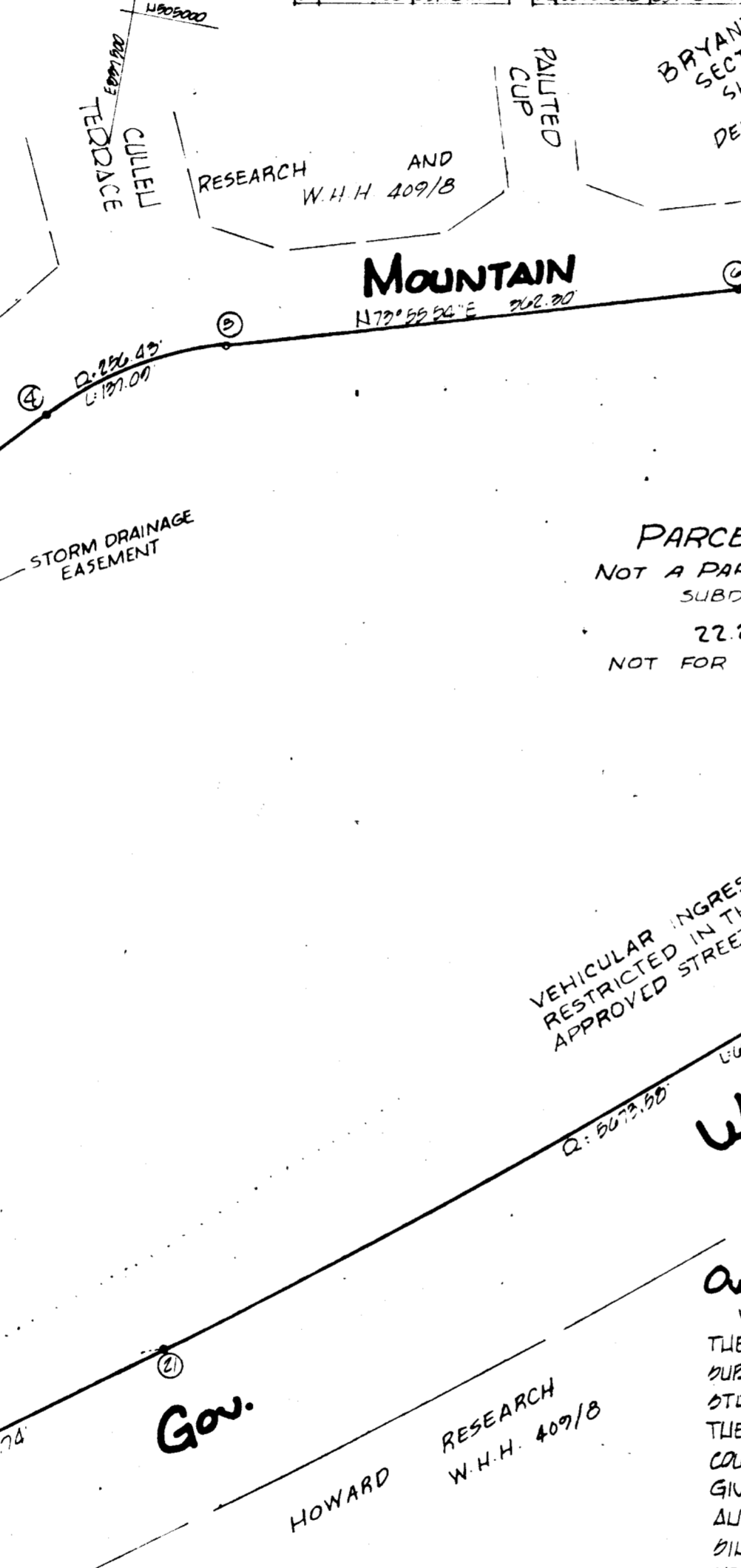
I FURTHER CERTIFY THAT THE REQUIREMENTS OF SECTION 60 ARTICLE 17, OF THE ANNOTATED CODE OF MARYLAND (AS AMENDED) AS FAR AS THEY RELATE TO THE MAKING OF THIS PLAT HAVE BEEN COMPLIED WITH.

*Russell E. Louiah*  
RUSSELL E. LOUIAH REG. L.S. L.S. 9027  
DATE: 5-23-67

GRANT OF EASEMENT FOR WATER AND SEWER  
WE, THE HOWARD RESEARCH AND DEVELOPMENT CORPORATION, OWNER OF THE PROPERTY SHOWN AND DESCRIBED HEREON DO HEREBY GRANT UNTO THE HOWARD COUNTY METROPOLITAN COMMISSION, ITS SUCCESSORS AND ASSIGNS THE RIGHT TO LAY, CONSTRUCT AND MAINTAIN WATER AND SEWER MAINS AND SERVICES PIPES IN CONNECTION THEREWITH IN AND UNDER THE RIGHT-OF-WAY OF THE ROADS AND STREETS AS SHOWN HEREON.

THE HOWARD RESEARCH AND DEVELOPMENT CORPORATION  
BY *Charles E. Smith* AUTHORIZED AGENT

COORDINATES		COORDINATES		COORDINATES	
No.	NORTH	EAST	No.	NORTH	EAST
33	504367.11	837126.43	1	504411.10	837127.71
34	504356.02	837132.03	2	504401.01	837133.02
35	504283.53	837156.02	3	504391.92	837143.93
36	504178.91	837206.25	4	504381.83	837193.84
37	503910.59	837444.78	5	504371.74	837243.75
			6	504361.65	837293.66
			7	504351.56	837343.57
			8	504341.47	837393.48
			9	504331.38	837443.39
			10	504321.29	837493.30
			11	504311.20	837543.21
			12	504301.11	837593.12
			13	504291.02	837643.03
			14	504280.93	837692.94
			15	504270.84	837742.85
			16	504260.75	837792.76
			17	504250.66	837842.67
			18	504240.57	837892.58
			19	504230.48	837942.49
			20	504220.39	837992.40
			21	504210.30	838042.31
			22	504200.21	838092.22
			23	504190.12	838142.13
			24	504180.03	838192.04
			25	504170.94	838241.95
			26	504160.85	838291.86
			27	504150.76	838341.77
			28	504140.67	838391.68
			29	504130.58	838441.59
			30	504120.49	838491.50
			31	504110.40	838541.41
			32	504100.31	838591.32
			33	504090.22	838641.23
			34	504080.13	838691.14
			35	504070.04	838741.05
			36	504060.95	838790.96
			37	504050.86	838840.87
			38	504040.77	838890.78
			39	504030.68	838940.69
			40	504020.59	838990.60
			41	504010.50	839040.51
			42	504000.41	839090.42
			43	503990.32	839140.33
			44	503980.23	839190.24
			45	503970.14	839240.15
			46	503960.05	839290.06
			47	503950.96	839340.97
			48	503940.87	839390.88
			49	503930.78	839440.79
			50	503920.69	839490.70
			51	503910.60	839540.61
			52	503900.51	839590.52
			53	503890.42	839640.43
			54	503880.33	839690.34
			55	503870.24	839740.25
			56	503860.15	839790.16
			57	503850.06	839840.07
			58	503840.97	839890.98
			59	503830.88	839940.89
			60	503820.79	839990.80
			61	503810.70	840040.71
			62	503800.61	840090.62
			63	503790.52	840140.53
			64	503780.43	840190.44
			65	503770.34	840240.35
			66	503760.25	840290.26
			67	503750.16	840340.17
			68	503740.07	840390.08
			69	503730.98	840440.99
			70	503720.89	840490.90
			71	503710.80	840540.81
			72	503700.71	840590.72
			73	503690.62	840640.63
			74	503680.53	840690.54
			75	503670.44	840740.45
			76	503660.35	840790.36
			77	503650.26	840840.27
			78	503640.17	840890.18
			79	503630.08	840940.09
			80	503620.99	840990.00
			81	503610.90	841040.91
			82	503600.81	841090.82
			83	503590.72	841140.73
			84	503580.63	841190.64
			85	503570.54	841240.55
			86	503560.45	841290.46
			87	503550.36	841340.37
			88	503540.27	841390.28
			89	503530.18	841440.19
			90	503520.09	841490.10
			91	503510.00	841540.01
			92	503500.91	841590.92
			93	503490.82	841640.83
			94	503480.73	841690.74
			95	503470.64	841740.65
			96	503460.55	841790.56
			97	503450.46	841840.47
			98	503440.37	841890.38
			99	503430.28	841940.29
			100	503420.19	841990.20



NOTES:  
1. THE COORDINATES SHOWN HEREON ARE BASED ON THE MARYLAND STATE GRID SYSTEM.  
2. ALL REQUIREMENTS TO BE IN ACCORDANCE WITH THE APPROVED FINAL DEVELOPMENT CRITERIA OF PHASE II, VILLAGE OF WILDE LAKE, AS RECORDED IN THE LAND RECORDS OF HOWARD COUNTY IN PLAT BOOK 11 FOLIO 34 TO 46.

NO.	Δ	CHORD	BEARING	TANG.	CHORD BEARING
1	15°24'30"	421.07	117°25'	25.70	N21°15'10"E 118.70
2	82°27'00"	326.30	197°20'	73.10	N29°24'30"E 124.41
3	89°22'11"	292.71	240°00'	142.50	N81°07'30"E 142.50
4	0°05'56"	292.07	066°02'	33.45	N74°55'18"E 66.30
5	2°10'07"	411.07	102°22'	60.55	N77°17'00"W 102.53
6	124°10'53"	321.07	270°00'	212.29	N89°01'00"W 102.51
7	124°10'00"	121.07	300°00'	257.70	N89°00'00"W 102.51
8	07°00'00"	307.00	178°05'	347.01	N89°00'00"W 102.51
9	111°16'29"	25.00	170°01'	126.70	S70°31'46"E 145.21
10	118°15'16"	270.00	186°02'	42.38	N20°04'41"W 102.64
11	118°50'2"	230.00	163°28'	32.00	N108°22'46"W 123.28
12	15°15'00"	278.00	178°05'	38.07	N103°21'00"W 78.01
13	30°20'41"	222.00	117°06'	60.41	N26°10'29"W 116.58

**OWNER'S CERTIFICATE:**  
WE, THE HOWARD RESEARCH AND DEVELOPMENT CORP. OWNERS OF THE PROPERTY SHOWN AND DESCRIBED HEREOF, ADOPT THIS PLAN OF SUBDIVISION AND RESERVE THE FEE SIMPLE TITLE TO THE BEDS OF THE STREETS AND/OR ROADS SHOWN HEREOF, AND IN CONSIDERATION OF THE APPROVAL OF THIS PLAT BY THE PLANNING COMMISSION OF HOWARD COUNTY, MARYLAND, WE OURSELVES OUR HEIRS OR ASSIGNS DO HEREBY GIVE AND GRANT UNTO THE BOARD OF COUNTY COMMISSIONERS THE RIGHT AND OPTION TO ACQUIRE FOR THE CONSIDERATION OF ONE DOLLAR, THE FEE SIMPLE TITLE TO THE BEDS OF THE STREETS AND/OR ROADS SHOWN HEREOF WITHIN THE PERIOD OF FIVE YEARS FROM THE RECORDING OF THIS PLAT ALONG THE LAND RECORDS OF HOWARD COUNTY MARYLAND, WITNESS OUR HANDS AND SEALS THIS 13 DAY OF April 1967

BY: *Dante W. Warner* AUTHORIZED AGENT  
ATTEST: *Charles E. Smith*

ALL UTILITY AND DRAINAGE EASEMENTS SHOWN MAY BE USED FOR THE INSTALLATION AND MAINTENANCE OF SEWER, DRAINAGE AND OTHER UNDERGROUND UTILITY SERVICES AS REQUIRED BY AUTHORIZED AGENCIES OF HOWARD COUNTY.

OPEN SPACE IS AVAILABLE FOR USE OF DRAINAGE EASEMENTS IN ACCORDANCE WITH THE APPROVED FINAL DEVELOPMENT CRITERIA FOR PHASE II, VILLAGE OF WILDE LAKE, AS RECORDED IN THE LAND RECORDS OF HOWARD COUNTY IN PLAT BOOK 11 FOLIO 34 TO 46.

NOTE: THIS PLAT HAS BEEN AMENDED TO REFLECT CORRECTION OF ERRORS IN DRAFTING AND AREA COMPUTATIONS.

APPROVED: HOWARD COUNTY HEALTH DEPT. FOR PUBLIC WATER AND PUBLIC SEWER SYSTEM  
*Theodore...* COUNTY HEALTH OFFICER 4-27-67 DATE  
APPROVED: HOWARD COUNTY PLANNING COMMISSION  
*Carl B....* CHAIRMAN 4-29-67 DATE  
*Thomas L. Harris, Jr.* DIRECTOR 5-1-67 DATE  
APPROVED: HOWARD COUNTY ROADS DEPARTMENT  
*Norman S. Meill* ROADS SUPERINTENDENT 4-28-67 DATE  
APPROVED: HOWARD COUNTY METROPOLITAN COMMISSION  
*W. O. Pickett* CHIEF ENGINEER 4-28-67 DATE

AREAS  
TOTAL AREA SHOWN ON THIS SHEET: 1.907 Ac.  
AREA OF ROAD ROW THIS SHEET: 0.00 Ac.  
NO. OF LOTS THIS SHEET: 1

NOTE: THIS FINAL RECORD PLAT SUPERSEDES THE FINAL RECORD PLAT PREVIOUSLY RECORDED ON FEB. 27, 1967, IN LIBER 12 AT FOLIO 21, OF THE LAND RECORDS OF HOWARD COUNTY. SAID PLAT IS HEREBY DECLARED NULL AND VOID AND OF NO FURTHER EFFECT.

AMENDED PLAT  
**COLUMBIA**  
VILLAGE OF WILDE LAKE SUBDIVISION SECTION 1  
BRYANT WOODS  
5TH ELECTION DIST. HOWARD COUNTY, MD.  
SCALE: 1"=100' MAY 1, 1967.  
THE HOWARD RESEARCH AND DEVELOPMENT CORP.  
THE VILLAGE OF COLUMBIA KEYS BALTIMORE, MARYLAND  
C. D. WESSICK JR. AND ASSOCIATES INC.  
CONSULTING ENGINEERS AND LAND SURVEYORS  
81 WEST STREET ALLIAPOLIS, MD.  
AMENDED SHEET 7 OF 7