

COORDINATES				CURVE DATA			
NO.	WORTH	EAST	SOUTH	NO.	A	RADIUS	CHORD BEARING
1	504367.24	837126.64	110.00	1	73°09'30"	897.00	1075.1
2	504294.44	837100.31	110.00	2	8°9'	897.00	1075.1
3	504221.64	836826.98	110.00	3	20°10'28"	897.00	1075.1
4	504148.84	836553.65	110.00	4	32°11'16"	897.00	1075.1
5	504076.04	836280.32	110.00	5	44°12'04"	897.00	1075.1
6	504003.24	836006.99	110.00	6	56°12'52"	897.00	1075.1
7	503930.44	835733.66	110.00	7	68°13'40"	897.00	1075.1
8	503857.64	835460.33	110.00	8	80°14'28"	897.00	1075.1
9	503784.84	835186.99	110.00	9	92°15'16"	897.00	1075.1
10	503712.04	834913.66	110.00	10	104°16'04"	897.00	1075.1
11	503639.24	834640.33	110.00	11	116°16'52"	897.00	1075.1
12	503566.44	834366.99	110.00	12	128°17'40"	897.00	1075.1
13	503493.64	834093.66	110.00	13	140°18'28"	897.00	1075.1
14	503420.84	833820.33	110.00	14	152°19'16"	897.00	1075.1
15	503348.04	833546.99	110.00	15	164°20'04"	897.00	1075.1
16	503275.24	833273.66	110.00	16	176°20'52"	897.00	1075.1
17	503202.44	833000.33	110.00	17	188°21'40"	897.00	1075.1
18	503129.64	832726.99	110.00	18	200°22'28"	897.00	1075.1
19	503056.84	832453.66	110.00	19	212°23'16"	897.00	1075.1
20	502984.04	832180.33	110.00	20	224°24'04"	897.00	1075.1
21	502911.24	831906.99	110.00	21	236°24'52"	897.00	1075.1
22	502838.44	831633.66	110.00	22	248°25'40"	897.00	1075.1
23	502765.64	831360.33	110.00	23	260°26'28"	897.00	1075.1
24	502692.84	831086.99	110.00	24	272°27'16"	897.00	1075.1
25	502620.04	830813.66	110.00	25	284°28'04"	897.00	1075.1
26	502547.24	830540.33	110.00	26	296°28'52"	897.00	1075.1
27	502474.44	830266.99	110.00	27	308°29'40"	897.00	1075.1
28	502401.64	829993.66	110.00	28	320°30'28"	897.00	1075.1
29	502328.84	829720.33	110.00	29	332°31'16"	897.00	1075.1
30	502256.04	829446.99	110.00	30	344°32'04"	897.00	1075.1
31	502183.24	829173.66	110.00	31	356°32'52"	897.00	1075.1
32	502110.44	828900.33	110.00	32	368°33'40"	897.00	1075.1
33	502037.64	828626.99	110.00	33	380°34'28"	897.00	1075.1
34	501964.84	828353.66	110.00	34	392°35'16"	897.00	1075.1
35	501892.04	828080.33	110.00	35	404°36'04"	897.00	1075.1
36	501819.24	827806.99	110.00	36	416°36'52"	897.00	1075.1
37	501746.44	827533.66	110.00	37	428°37'40"	897.00	1075.1
38	501673.64	827260.33	110.00	38	440°38'28"	897.00	1075.1
39	501600.84	826986.99	110.00	39	452°39'16"	897.00	1075.1
40	501528.04	826713.66	110.00	40	464°40'04"	897.00	1075.1
41	501455.24	826440.33	110.00	41	476°40'52"	897.00	1075.1
42	501382.44	826166.99	110.00	42	488°41'40"	897.00	1075.1
43	501309.64	825893.66	110.00	43	500°42'28"	897.00	1075.1
44	501236.84	825620.33	110.00	44	512°43'16"	897.00	1075.1
45	501164.04	825346.99	110.00	45	524°44'04"	897.00	1075.1
46	501091.24	825073.66	110.00	46	536°44'52"	897.00	1075.1
47	501018.44	824800.33	110.00	47	548°45'40"	897.00	1075.1
48	500945.64	824526.99	110.00	48	560°46'28"	897.00	1075.1
49	500872.84	824253.66	110.00	49	572°47'16"	897.00	1075.1
50	500800.04	823980.33	110.00	50	584°48'04"	897.00	1075.1

GRANT OF EASEMENT FOR WATER AND SEWER
 WE, THE HOWARD RESEARCH AND DEVELOPMENT CORPORATION, OWNER OF THE PROPERTY SHOWN AND DESCRIBED HEREON DO HEREBY GRANT UNTO THE HOWARD COUNTY METROPOLITAN COMMISSION, ITS SUCCESSORS AND ASSIGNS, THE RIGHT TO LAY, CONSTRUCT AND MAINTAIN WATER AND SEWER MAINS AND SERVICES PIPES IN CONNECTION THEREWITH, IN AND UNDER THE RIGHT-OF-WAY OF THE ROADS AND STREETS AS SHOWN HEREON.

ATTEST:
 Charles E. Smith BY Paul Williams
 THE HOWARD RESEARCH AND DEVELOPMENT CORPORATION
 Paul Williams
 Surveyor

OWNERS CERTIFICATE:
 WE, THE HOWARD RESEARCH AND DEVELOPMENT CORP., OWNERS OF THE PROPERTY SHOWN AND DESCRIBED HEREON, ADOPT THIS PLAN OF SUBDIVISION AND RESERVE THE FEE SIMPLE TITLE TO THE BEDS OF THE STREETS AND/OR ROADS SHOWN HEREON, AND IN CONSIDERATION OF THE APPROVAL OF THIS PLAN BY THE PLANNING COMMISSION OF HOWARD COUNTY, MARYLAND, WE FOR OURSELVES OR HEIRS OR ASSIGNS DO HEREBY GIVE AND GRANT UNTO THE BOARD OF COUNTY COMMISSIONERS THE RIGHT AND OPTION TO ACQUIRE FOR THE CONVEYANCE OF ONE COLLAR, THE FEE SIMPLE TITLE TO THE BEDS OF THE STREETS AND/OR ROADS SHOWN HEREON WITHIN THE PERIOD OF FIVE YEARS FROM THE RECORDING OF THIS PLAN ALONG THE LAND RECORDS OF HOWARD COUNTY, MARYLAND, WITNESS OUR HANDS AND SEALS THIS 16TH DAY OF FEB. 1967.

BY: Paul Williams
 Surveyor
 ATTEST: Charles E. Smith

SURVEYORS CERTIFICATE:
 I, RUSSELL E. LOWLAND HEREBY CERTIFY THAT THE PLAN SHOWN HEREON IS CORRECT AND IS A SUBDIVISION OF PART OF THE LAND WHICH BY DEED DATED OCTOBER 14, 1963 AND RECORDED AMONG THE LAND RECORDS OF HOWARD COUNTY, MARYLAND, IN LIBER WITH 000 FOLIO 0 WAS GRANTED AND CONVEYED BY R. E. GILBERT, TRUSTEE TO THE HOWARD RESEARCH AND DEVELOPMENT CORP. AND PART OF THE LAND WHICH BY DEED DATED JUNE 1963 AND RECORDED AMONG THE LAND RECORDS OF HOWARD COUNTY, MARYLAND IN LIBER WITH 201 FOLIO 201 WAS GRANTED AND CONVEYED BY TOWN AND COUNTRY HOMES, INC. TO THE HOWARD RESEARCH AND DEVELOPMENT CORP. AND THAT STAKES AND/OR MONUMENTS MARKED THEREON ARE IN PLACE AS SHOWN.
 I FURTHER CERTIFY THAT THE REQUIREMENTS OF SECTION 202, ARTICLE 17, OF THE ANNOTATED CODE OF MARYLAND (AS AMENDED) AS FAR AS THEY RELATE TO THE MAKING OF THIS PLAN, HAVE BEEN COMPLIED WITH.

Russell E. Lowland 8-22-66
 RUSSELL E. LOWLAND REG. L.S. 12 9987 DATE

APPROVED: HOWARD COUNTY HEALTH DEPT. FOR PUBLIC WATER AND PUBLIC SEWER SYSTEM
Theodore J. Shroy 7-17-67
 COUNTY HEALTH OFFICER DATE

APPROVED: HOWARD COUNTY PLANNING COMMISSION
Raymond A. Greene 2-18-67
 CHAIRMAN DATE
Thomas J. Harris, Jr. 2-17-67
 DIRECTOR DATE

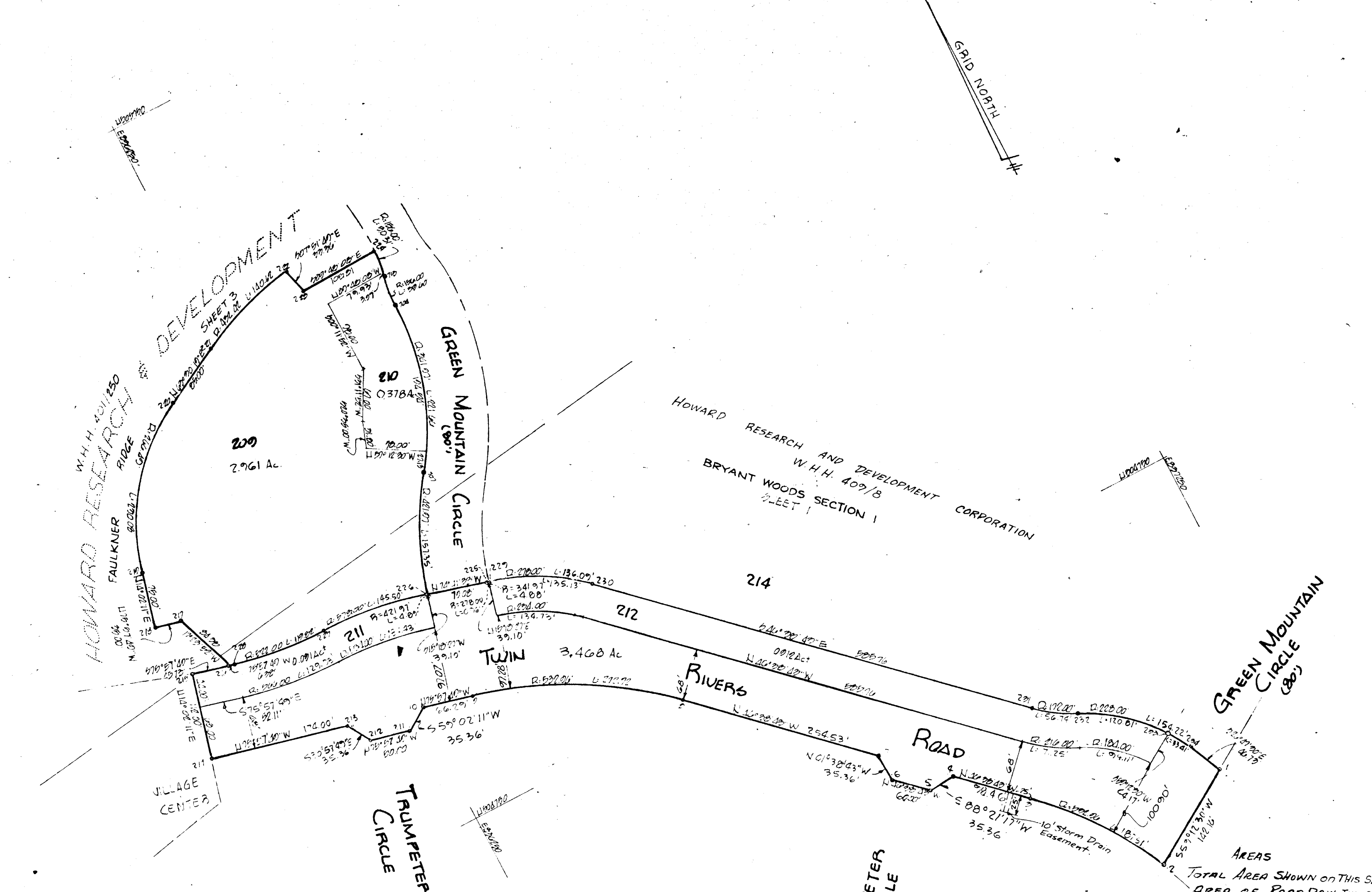
APPROVED: HOWARD COUNTY ROADS DEPARTMENT
Herman S. O'Neill 2-2-67
 ROADS SUPERINTENDENT DATE

APPROVED: HOWARD COUNTY METROPOLITAN COMMISSION
W. C. Colwell 2-7-67
 CHIEF ENGINEER DATE

RECORDED IN PLAT BOOK 12 FOLIO 76
 ON FEB. 27, 1967 AMONG THE LAND RECORDS OF HOWARD COUNTY, MD.

COLUMBIA
 VILLAGE OF WILDE LAKE SUBDIVISION
 SECTION I
 BRYANT WOODS

FIFTH ELECTION DIST HOWARD COUNTY, MD
 SCALE 1"=100' AUGUST 19, 1966
 THE HOWARD RESEARCH AND DEVELOPMENT CORP.
 THE VILLAGE OF CROSS KEYS BALTIMORE, MD.
 C.D. MESSICK JR. AND ASSOCIATES INC.
 CONSULTING ENGINEERS AND LAND SURVEYORS
 21 WEST STREET ANNAPOLIS, MARYLAND



NOTE:
 (1) THE COORDINATES SHOWN HEREON ARE BASED ON THE MARYLAND STATE GRID SYSTEM. ALL REQUIREMENTS TO BE IN ACCORDANCE WITH THE APPROVED FINAL DEVELOPMENT CRITERIA OF PHASE II, VILLAGE OF WILDE LAKE, AS RECORDED IN THE LAND RECORDS OF HOWARD COUNTY IN PLAT BOOK 11 FOLIO 7 TO 19.

ALL UTILITY AND DRAINAGE EASEMENTS SHOWN HEREON MAY BE USED FOR THE INSTALLATION AND MAINTENANCE OF SEWER DRAINAGE AND OTHER UNDERGROUND UTILITY SERVICE AS REQUIRED BY AUTHORIZED AGENCIES OF HOWARD COUNTY.
 OPEN SPACE IS AVAILABLE FOR USE OF DRAINAGE EASEMENTS IN ACCORDANCE WITH THE APPROVED FINAL DEVELOPMENT CRITERIA FOR PHASE II, VILLAGE OF WILDE LAKE, AS RECORDED IN THE LAND RECORDS OF HOWARD COUNTY IN PLAT BOOK 11, FOLIO 7 TO 19.

W.H.H. 409/8
 HOWARD RESEARCH & DEVELOPMENT CORP.

COORDINATES					
NO.	NORTH	EAST	NO.	NORTH	EAST
1	807234.26	827734.93	14	807163.32	827805.77
2	807234.26	827734.93	15	807163.32	827805.77
3	807068.20	826609.99	16	807211.26	826609.99
4	807234.26	827734.93	17	807202.30	827734.93
5	807234.26	827734.93	18	807202.30	827734.93
6	807234.26	827734.93	19	807202.30	827734.93
7	807234.26	827734.93	20	807202.30	827734.93
8	807234.26	827734.93	21	807202.30	827734.93
9	807234.26	827734.93	22	807202.30	827734.93
10	807234.26	827734.93	23	807202.30	827734.93
11	807234.26	827734.93	24	807202.30	827734.93
12	807234.26	827734.93	25	807202.30	827734.93
13	807234.26	827734.93	26	807202.30	827734.93
14	807234.26	827734.93	27	807202.30	827734.93
15	807234.26	827734.93	28	807202.30	827734.93
16	807234.26	827734.93	29	807202.30	827734.93
17	807234.26	827734.93	30	807202.30	827734.93
18	807234.26	827734.93	31	807202.30	827734.93
19	807234.26	827734.93	32	807202.30	827734.93
20	807234.26	827734.93	33	807202.30	827734.93
21	807234.26	827734.93	34	807202.30	827734.93
22	807234.26	827734.93	35	807202.30	827734.93
23	807234.26	827734.93	36	807202.30	827734.93
24	807234.26	827734.93	37	807202.30	827734.93
25	807234.26	827734.93	38	807202.30	827734.93
26	807234.26	827734.93	39	807202.30	827734.93
27	807234.26	827734.93	40	807202.30	827734.93

GRANT OF EASEMENT FOR WATER AND SEWER

WE, THE HOWARD RESEARCH AND DEVELOPMENT CORPORATION, OWNER OF THE PROPERTY SHOWN AND DESCRIBED HEREON DO HEREBY GRANT UNTO THE HOWARD COUNTY METROPOLITAN COMMISSION, ITS SUCCESSORS AND ASSIGNS, THE RIGHT TO LAY, CONSTRUCT AND MAINTAIN WATER AND SEWER MAINS AND SERVICES PIPES IN CONNECTION THEREWITH, IN AND UNDER THE RIGHT-OF-WAY OF THE ROADS AND STREETS AS SHOWN HEREON.

ATTEST
 THE HOWARD COUNTY RESEARCH AND DEVELOPMENT CORPORATION
Charles E. Smith BY *Darrell W. Harris*
 Authorized Agent

OWNERS CERTIFICATE:

WE, THE HOWARD RESEARCH AND DEVELOPMENT CORP. OWNERS OF THE PROPERTY SHOWN AND DESCRIBED HEREON, ADOPT THIS PLAN OF SUBDIVISION AND RESERVE THE FEE SIMPLE TITLE TO THE DEEDS OF THE STREETS AND/OR ROADS SHOWN HEREON, AND IN CONSIDERATION OF THE APPROVAL OF THIS PLAN BY THE PLANNING COMMISSION OF HOWARD COUNTY, MARYLAND WE FOR OURSELVES OUR HEIRS OR ASSIGNS DO HEREBY GIVE AND GRANT UNTO THE BOARD OF COUNTY COMMISSIONERS THE RIGHT AND OPTION TO ACQUIRE FOR THE CONSIDERATION OF ONE DOLLAR, THE FEE SIMPLE TITLE TO THE DEEDS OF THE STREETS AND/OR ROADS SHOWN HEREON WITHIN THE PERIOD OF FIVE YEARS FROM THE RECORDING OF THIS PLAN ALONG THE LAND RECORDS OF HOWARD COUNTY, MARYLAND.

WITNESS OUR HANDS AND SEALS THIS 14TH DAY OF FEB. 1967.

BY: *Darrell W. Harris*
 Authorized Agent

ATTEST: *Charles E. Smith*

SURVEYORS CERTIFICATE:

I, RUSSELL E. LOWMAN HEREBY CERTIFY THAT THE PLAN SHOWN HEREON IS CORRECT AND IS A SUBDIVISION OF PART OF THE LAND WHICH BY DEED DATED JULY 7, 1963 AND RECORDED AMONG THE LAND RECORDS OF HOWARD COUNTY, MARYLAND, IN LIBER VOLUME 201 FOLIO 250 WAS GRANTED AND CONVEYED BY TOWN AND RANCH HOUSE, INC. TO THE HOWARD RESEARCH AND DEVELOPMENT CORP. AND PART OF PARCEL 2, SCHEDULE A THE LAND WHICH BY DEED DATED MAY 31, 1963 AND RECORDED AMONG THE LAND RECORDS OF HOWARD COUNTY, MARYLAND, IN LIBER VOLUME 200 FOLIO 715 WAS GRANTED AND CONVEYED BY FARMINGTON, INC. TO THE HOWARD RESEARCH AND DEVELOPMENT CORP. AND THAT STAKES AND/OR MONUMENTS MARKED THEREON ARE IN PLACE AS SHOWN.

I FURTHER CERTIFY THAT THE REQUIREMENTS OF SECTION 722, ARTICLE 17, OF THE ANNOTATED CODE OF MARYLAND (AS AMENDED) AS FAR AS THEY RELATE TO THE MAKING OF THIS PLAN, HAVE BEEN COMPLIED WITH.

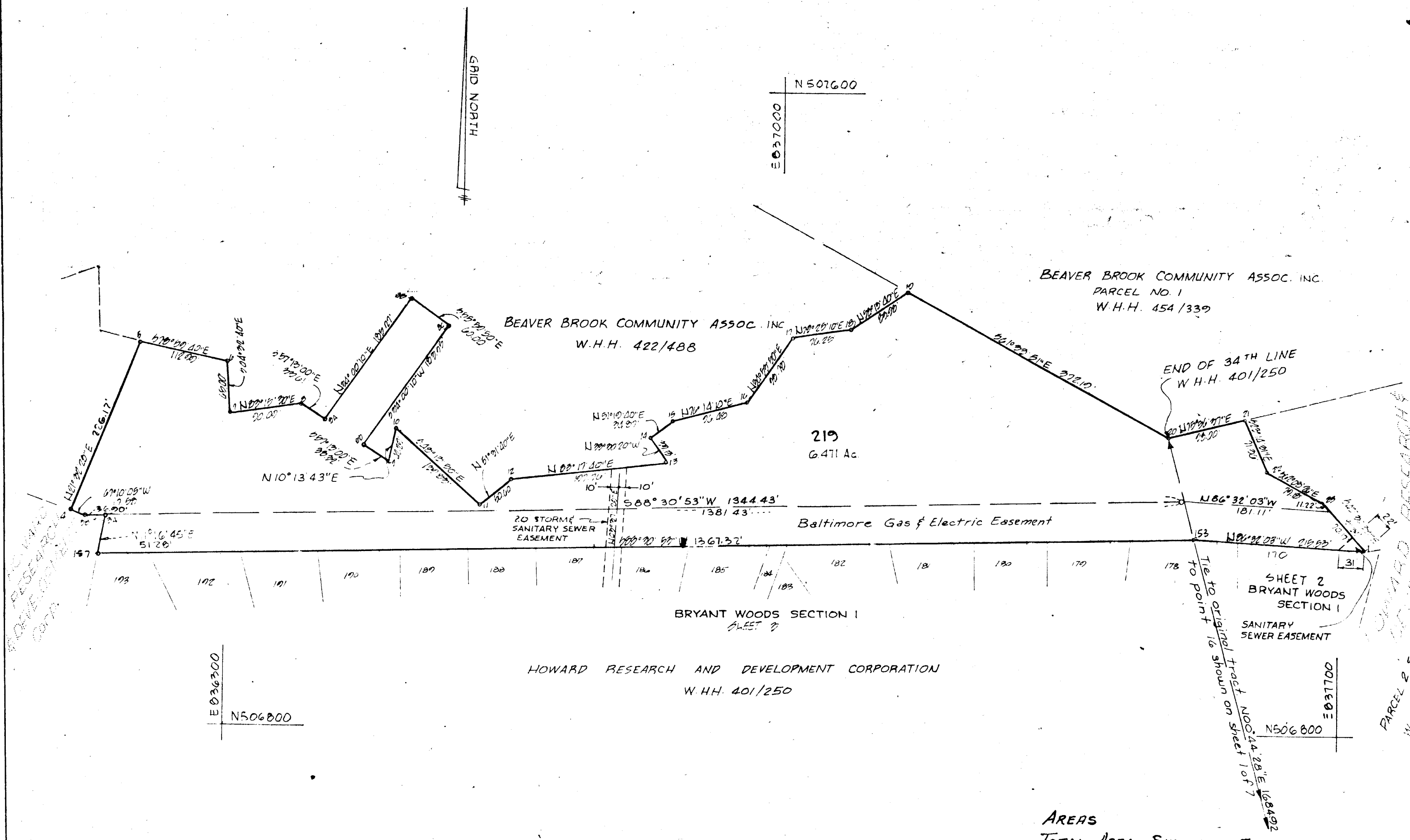
Russell E. Lowman 8-22-67
 RUSSELL E. LOWMAN REG. L.S. NO. 0007 DATE

APPROVED: HOWARD COUNTY HEALTH DEPT. FOR PUBLIC WATER AND PUBLIC SEWER SYSTEM
Heorh... 2-17-67
 COUNTY HEALTH OFFICER DATE

APPROVED: HOWARD COUNTY PLANNING COMMISSION
Robert B. Greene 2-15-67
 CLERK DATE

APPROVED: HOWARD COUNTY ROADS DEPARTMENT
Thomas A. Harris, Jr. 2-17-67
 DIRECTOR DATE

APPROVED: HOWARD COUNTY METROPOLITAN COMMISSION
Herman S. Chell 2-2-67
 CHIEF ENGINEER DATE



NOTE:
 (1) THE COORDINATES SHOWN HEREON ARE BASED ON THE MARYLAND STATE GRID SYSTEM.
 ALL REQUIREMENTS TO BE IN ACCORDANCE WITH THE APPROVED FINAL DEVELOPMENT CRITERIA FOR PHASE II VILLAGE OF WILDE LAKE AS RECORDED IN THE LAND RECORDS OF HOWARD COUNTY IN PLAT BOOK 11, FOLIO 7 TO 19.

ALL UTILITY AND DRAINAGE EASEMENTS SHOWN HEREON MAY BE USED FOR THE INSTALLATION AND MAINTENANCE OF SEWER, DRAINAGE AND OTHER UNDERGROUND UTILITY SERVICES AS REQUIRED BY AUTHORIZED AGENCIES OF HOWARD COUNTY.
 OPEN SPACE IS AVAILABLE FOR USE OF DRAINAGE EASEMENTS IN ACCORDANCE WITH THE APPROVED FINAL DEVELOPMENT CRITERIA FOR PHASE II, VILLAGE OF WILDE LAKE, AS RECORDED IN THE LAND RECORDS OF HOWARD COUNTY IN PLAT BOOK 11, FOLIO 7 TO 19.

AREAS
 TOTAL AREA SHOWN ON THIS SHEET: 6.471 Ac.
 NO. OF LOTS THIS SHEET: 1

RECORDED PLAT BOOK 12, FOLIO 19
 ON FEB 27, 1967 AMONG THE LAND RECORDS OF HOWARD COUNTY, MD.

COLUMBIA
 VILLAGE OF WILDE LAKE SUBDIVISION
 SECTION I
 BRYANT WOODS

FIFTH ELECTION DIST. HOWARD COUNTY MD.
 SCALE: 1"=100' AUGUST 12, 1966.

THE HOWARD RESEARCH AND DEVELOPMENT CORP.
 THE VILLAGE OF CROSS KEYS BALTIMORE, MARYLAND 21210

C.D. MESSICK, JR. AND ASSOCIATES, INC.
 CONSULTING ENGINEERS & LAND SURVEYORS
 21 WEST STREET ANNAPOLIS, MARYLAND

SURVEYOR'S CERTIFICATE:

I, RUSSELL E. LOWMAN, CERTIFY THAT THE PLAN SHOWN HEREON IS CORRECT AND IS A SUBDIVISION OF PART OF THE LAND WHICH BY DEED DATED OCTOBER 14, 1963 AND RECORDED AMONG THE LAND RECORDS OF HOWARD COUNTY MARYLAND IN LIBER 1111 L. 209 FOLIO 21 WAS GRANTED AND CONVEYED BY G. E. S. ENTERPRISES, INC. TO THE HOWARD RESEARCH AND DEVELOPMENT CORP. AND THAT STAKES AND/OR MONUMENTS MARKED THEREON ARE IN PLACE AS SHOWN.

I FURTHER CERTIFY THAT THE REQUIREMENTS OF SECTION 703 ARTICLE 17 OF THE ANNOTATED CODE OF MARYLAND (AS AMENDED) AS FAR AS THEY RELATE TO THE MAKING OF THIS PLAT HAVE BEEN COMPLIED WITH.

Russell E. Lowman 9-4-66
 RUSSELL E. LOWMAN REG. L.S. No. 2027 DATE

COORDINATES		COORDINATES		COORDINATES	
No.	NORTH	EAST	No.	NORTH	EAST
33	504367.11	837126.43	1	504367.11	837126.43
34	504356.02	837132.03	2	504356.02	837132.03
35	504283.53	837156.82	3	504283.53	837156.82
36	504178.91	837208.25	4	504178.91	837208.25
37	503910.59	837444.78	5	503910.59	837444.78
6	504367.11	837126.43	11	504367.11	837126.43
7	504356.02	837132.03	12	504356.02	837132.03
8	504283.53	837156.82	13	504283.53	837156.82
9	504178.91	837208.25	14	504178.91	837208.25
10	503910.59	837444.78	15	503910.59	837444.78
11	504367.11	837126.43	20	504367.11	837126.43
12	504356.02	837132.03	21	504356.02	837132.03
13	504283.53	837156.82	22	504283.53	837156.82
14	504178.91	837208.25	23	504178.91	837208.25
15	503910.59	837444.78	24	503910.59	837444.78
16	504367.11	837126.43	25	504367.11	837126.43
17	504356.02	837132.03	26	504356.02	837132.03
18	504283.53	837156.82	27	504283.53	837156.82
19	504178.91	837208.25	28	504178.91	837208.25
20	503910.59	837444.78	29	503910.59	837444.78
21	504367.11	837126.43	30	504367.11	837126.43
22	504356.02	837132.03	31	504356.02	837132.03
23	504283.53	837156.82	32	504283.53	837156.82
24	504178.91	837208.25	33	504178.91	837208.25
25	503910.59	837444.78	34	503910.59	837444.78
26	504367.11	837126.43	35	504367.11	837126.43
27	504356.02	837132.03	36	504356.02	837132.03
28	504283.53	837156.82	37	504283.53	837156.82
29	504178.91	837208.25	38	504178.91	837208.25
30	503910.59	837444.78	39	503910.59	837444.78
31	504367.11	837126.43	40	504367.11	837126.43
32	504356.02	837132.03	41	504356.02	837132.03
33	504283.53	837156.82	42	504283.53	837156.82
34	504178.91	837208.25	43	504178.91	837208.25
35	503910.59	837444.78	44	503910.59	837444.78
36	504367.11	837126.43	45	504367.11	837126.43
37	504356.02	837132.03	46	504356.02	837132.03
38	504283.53	837156.82	47	504283.53	837156.82
39	504178.91	837208.25	48	504178.91	837208.25
40	503910.59	837444.78	49	503910.59	837444.78
41	504367.11	837126.43	50	504367.11	837126.43
42	504356.02	837132.03	51	504356.02	837132.03
43	504283.53	837156.82	52	504283.53	837156.82
44	504178.91	837208.25	53	504178.91	837208.25
45	503910.59	837444.78	54	503910.59	837444.78
46	504367.11	837126.43	55	504367.11	837126.43
47	504356.02	837132.03	56	504356.02	837132.03
48	504283.53	837156.82	57	504283.53	837156.82
49	504178.91	837208.25	58	504178.91	837208.25
50	503910.59	837444.78	59	503910.59	837444.78
51	504367.11	837126.43	60	504367.11	837126.43
52	504356.02	837132.03	61	504356.02	837132.03
53	504283.53	837156.82	62	504283.53	837156.82
54	504178.91	837208.25	63	504178.91	837208.25
55	503910.59	837444.78	64	503910.59	837444.78
56	504367.11	837126.43	65	504367.11	837126.43
57	504356.02	837132.03	66	504356.02	837132.03
58	504283.53	837156.82	67	504283.53	837156.82
59	504178.91	837208.25	68	504178.91	837208.25
60	503910.59	837444.78	69	503910.59	837444.78
61	504367.11	837126.43	70	504367.11	837126.43
62	504356.02	837132.03	71	504356.02	837132.03
63	504283.53	837156.82	72	504283.53	837156.82
64	504178.91	837208.25	73	504178.91	837208.25
65	503910.59	837444.78	74	503910.59	837444.78
66	504367.11	837126.43	75	504367.11	837126.43
67	504356.02	837132.03	76	504356.02	837132.03
68	504283.53	837156.82	77	504283.53	837156.82
69	504178.91	837208.25	78	504178.91	837208.25
70	503910.59	837444.78	79	503910.59	837444.78
71	504367.11	837126.43	80	504367.11	837126.43
72	504356.02	837132.03	81	504356.02	837132.03
73	504283.53	837156.82	82	504283.53	837156.82
74	504178.91	837208.25	83	504178.91	837208.25
75	503910.59	837444.78	84	503910.59	837444.78
76	504367.11	837126.43	85	504367.11	837126.43
77	504356.02	837132.03	86	504356.02	837132.03
78	504283.53	837156.82	87	504283.53	837156.82
79	504178.91	837208.25	88	504178.91	837208.25
80	503910.59	837444.78	89	503910.59	837444.78
81	504367.11	837126.43	90	504367.11	837126.43
82	504356.02	837132.03	91	504356.02	837132.03
83	504283.53	837156.82	92	504283.53	837156.82
84	504178.91	837208.25	93	504178.91	837208.25
85	503910.59	837444.78	94	503910.59	837444.78
86	504367.11	837126.43	95	504367.11	837126.43
87	504356.02	837132.03	96	504356.02	837132.03
88	504283.53	837156.82	97	504283.53	837156.82
89	504178.91	837208.25	98	504178.91	837208.25
90	503910.59	837444.78	99	503910.59	837444.78
91	504367.11	837126.43	100	504367.11	837126.43

GRANT OF EASEMENT FOR WATER AND SEWER

WE THE HOWARD RESEARCH AND DEVELOPMENT CORPORATION, OWNER OF THE PROPERTY SHOWN AND DESCRIBED HEREON DO HEREBY GRANT UNTO THE HOWARD COUNTY METROPOLITAN COMMISSION, ITS SUCCESSORS AND ASSIGNS THE RIGHT TO LAY, CONSTRUCT AND MAINTAIN WATER AND SEWER MAINS AND SERVICES PIPES IN CONNECTION THEREWITH IN AND UNDER THE RIGHT-OF-WAY OF THE ROADS AND STREETS AS SHOWN HEREON.

ATTEST:
Charles E. Smith by *Dart W. Warner*
 Notary Public

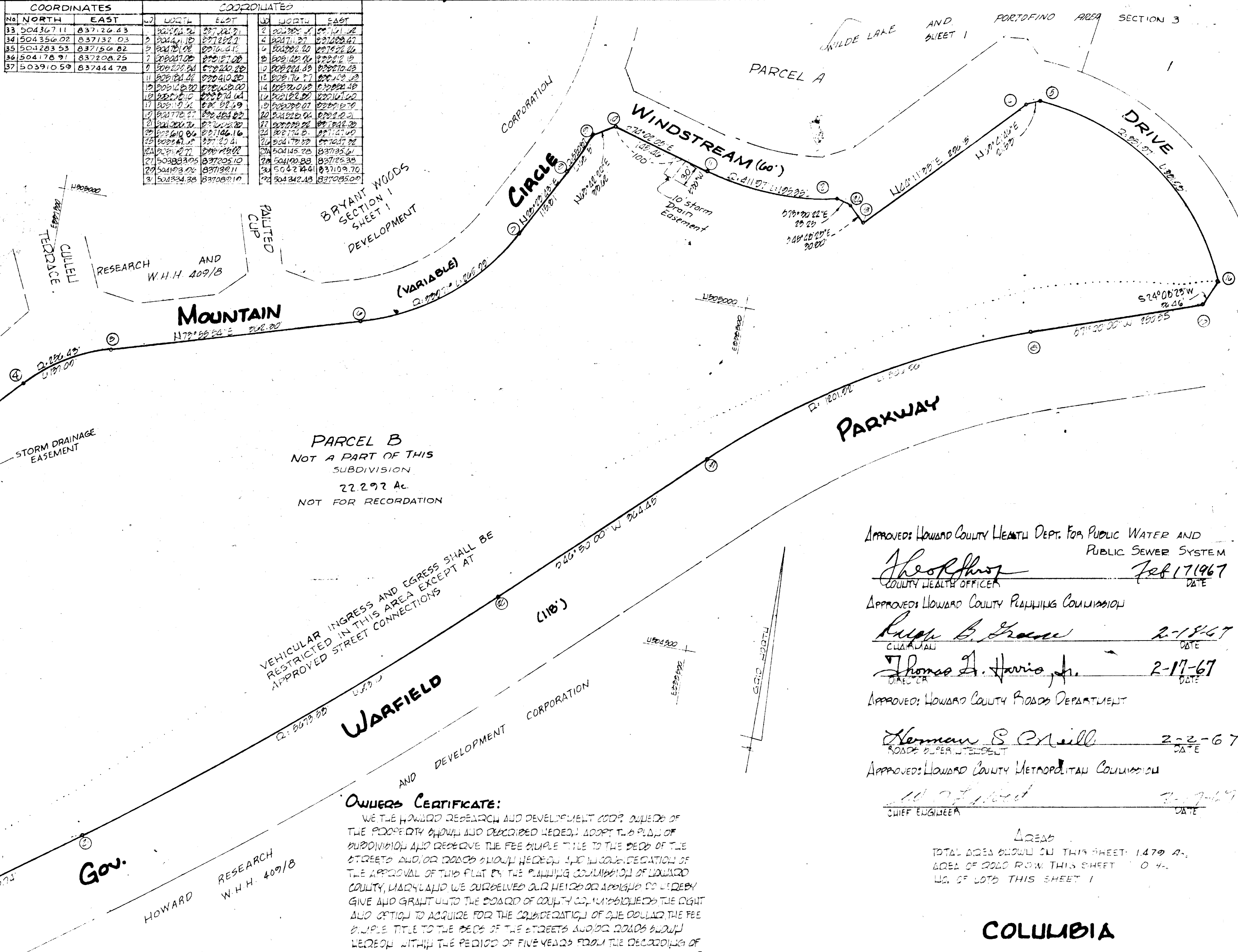
NOTES:

1. THE COORDINATES SHOWN HEREON ARE BASED ON THE MARYLAND STATE GRID SYSTEM.

ALL REQUIREMENTS TO BE IN ACCORDANCE WITH THE APPROVED FINAL DEVELOPMENT CRITERIA OF PHASE II, VILLAGE OF WILDE LAKE, AS RECORDED IN THE LAND RECORDS OF HOWARD COUNTY IN PLAT BOOK 11 FOLIO 7 TO 19.

CURVE DATA

NO.	Δ	QAR	LEW	TAN.	CHORD BEARING
1	18°52'30"	421.07	17.2	35.25	S 81°07'30" E 12.20
2	22°31'00"	220.00	197.00	70.00	S 67°28'56" E 22.27
3	28°22'11"	220.00	200.00	142.00	S 52°37'58" E 32.94
4	0°55'58"	220.00	200.00	33.45	N 24°55'16" E 66.17
5	1°11'31"	211.07	100.00	62.22	S 87°02'08" W 53.53
6	12°10'53"	220.00	200.00	62.22	S 88°02'00" W 20.00
7	12°10'53"	220.00	200.00	62.22	S 88°02'00" W 20.00
8	17°00'00"	200.00	200.00	24.10	S 88°02'00" W 20.00
9	11°16'20"	220.00	170.00	120.70	S 70°31'42" E 145.28
10	11°16'20"	220.00	170.00	120.70	S 70°31'42" E 145.28
11	5°55'40"	160.00	170.00	93.58	N 00°32'10" E 164.05
12	11°16'20"	220.00	170.00	120.70	S 70°31'42" E 145.28
13	11°16'20"	220.00	170.00	120.70	S 70°31'42" E 145.28
14	15°20'21"	220.00	170.00	120.70	S 70°31'42" E 145.28
15	30°26'41"	222.00	117.96	60.41	N 26°10'29" W 116.58



OWNERS CERTIFICATE:

WE THE HOWARD RESEARCH AND DEVELOPMENT CORP. OWNERS OF THE PROPERTY SHOWN AND DESCRIBED HEREON, ADOPT THE PLAN OF SUBDIVISION AND RESERVE THE FEE SIMPLE TITLE TO THE BEDS OF THE STREETS AND/OR ROADS SHOWN HEREON, AND IN CONSIDERATION OF THE APPROVAL OF THIS PLAT BY THE PLANNING COMMISSION OF HOWARD COUNTY, MARYLAND WE OURSELVES OUR HEIRS OR ASSIGNS DO HEREBY GIVE AND GRANT UNTO THE BOARD OF COUNTY COMMISSIONERS THE RIGHT AND OPTION TO ACQUIRE FOR THE CONSIDERATION OF ONE DOLLAR THE FEE SIMPLE TITLE TO THE BEDS OF THE STREETS AND/OR ROADS SHOWN HEREON WITHIN THE PERIOD OF FIVE YEARS FROM THE RECORDING OF THIS PLAT AND/OR THE LAND RECORDS OF HOWARD COUNTY MARYLAND WITHIN OUR HANDS AND BEARS THE DATE OF Feb. 1967.

ATTEST:
Dart W. Warner
Notary Public
Charles E. Smith

APPROVED: HOWARD COUNTY HEALTH DEPT. FOR PUBLIC WATER AND PUBLIC SEWER SYSTEM
George R. Hines Feb 17 1967
 COUNTY HEALTH OFFICER DATE

APPROVED: HOWARD COUNTY PLANNING COMMISSION
Ralph B. Green 2-17-67
 CLERK DATE

APPROVED: HOWARD COUNTY ROADS DEPARTMENT
Herman S. O'Neill 2-2-67
 ROADS SUPER INTENDENT DATE

APPROVED: HOWARD COUNTY METROPOLITAN COMMISSION
W. J. Reed 2-7-67
 CHIEF ENGINEER DATE

AREAS

TOTAL AREA SHOWN ON THIS SHEET: 1479 A.
 AREA OF ROAD ROW THIS SHEET: 0 A.
 NO. OF LOTS THIS SHEET: 1

COLUMBIA

VILLAGE OF WILDE LAKE SUBDIVISION SECTION 1

BRYANT WOODS
 THE HOWARD RESEARCH AND DEVELOPMENT CORPORATION
 THE VILLAGE OF WILDE LAKE BALTIMORE MARYLAND
 C. D. MAESSICK JR. AND ASSOCIATES INC.
 CONSULTING ENGINEERS AND LAND SURVEYORS
 21 WEST STREET BALTIMORE, MD.

RECORDED IN PLAT BOOK 12 FOLIO 21
 ON FEB. 27 1967 AMONG THE LAND RECORDS OF HOWARD COUNTY, MD.

REGISTERED PROFESSIONAL ENGINEER
 AUGUST 19 1966

SHEET 7 OF 7