

North boundary line of North Laurel Subdivision, being the fifth line (N83°-12'W 2377.1') as described in the deed recorded in Liber J.H.O. 50, Folio 642, and also in Liber J.H.O. 57, Folio 562 among the Land Records of Howard County. The bearing of this line is now determined as 386°-55'-30"W 2977.1'

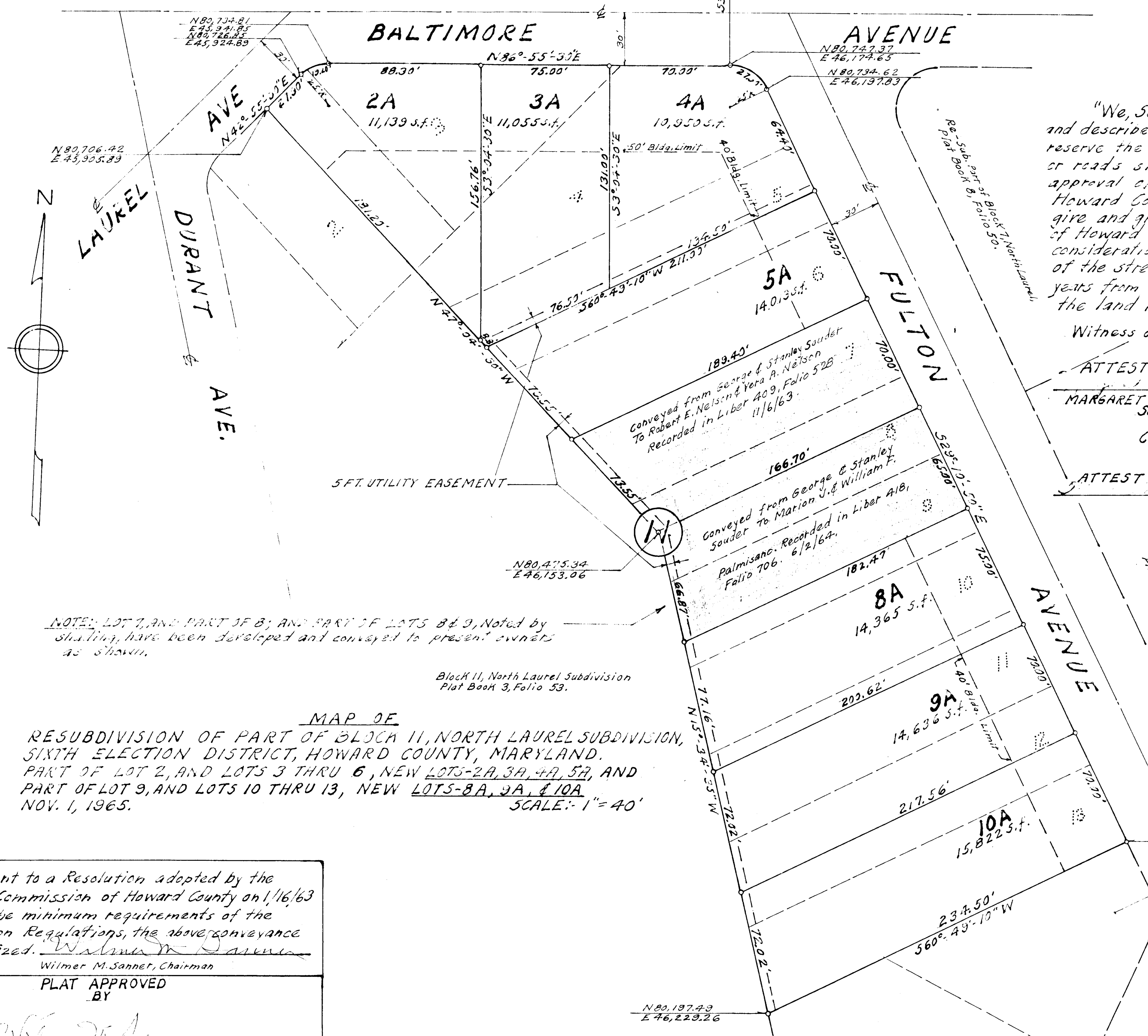
N.E. Cor. Subdivision

N87,957.22
E 46,163.52

386°-55'-30"W 1548.23'

N81,243.53
E 47,703.63

Coordinate System: Same as the Washington Suburban Sanitary Commission's, originating at the Capitol Dome in Wash., D.C.



OWNERS DEDICATION

"We, Southern Properties, owners of the property, and described hereon, adopt this plan of subdivision and reserve the fee simple title to the beds of the street or roads shown hereon, and in consideration of the approval of this plat by the Planning Commission of Howard County, we, ourselves, our heirs or assigns, do hereby give and grant unto the Board of County Commissioners of Howard County the right and option to acquire for the consideration of One Dollar, the fee simple title to the beds of the streets or roads shown hereon, within the period of five years from the date of the recording of this plat among the land records of Howard County."

Witness our hands and Seal this 2nd day of November, 1965.

ATTEST
MARGARET R. ANDERSON
Secretary
By: ROLAND L. NICHOLS, JR.
President.

Consent to the Aforegoing
LOYOLA FEDERAL SAVINGS AND LOAN ASSOCIATION
ATTEST
By: [Signature]
Vice President

NOTE: LOT 7, AND PART OF 8; AND PART OF LOTS 8 & 9, Noted by shading, have been developed and conveyed to present owners as shown.

Block 11, North Laurel Subdivision
Plat Book 3, Folio 53.

MAP OF
RESUBDIVISION OF PART OF BLOCK 11, NORTH LAUREL SUBDIVISION,
SIXTH ELECTION DISTRICT, HOWARD COUNTY, MARYLAND.
PART OF LOT 2, AND LOTS 3 THRU 6, NEW LOTS-2A, 3A, 4A, 5A, AND
PART OF LOT 9, AND LOTS 10 THRU 13, NEW LOTS-8A, 9A, & 10A
NOV. 1, 1965.
SCALE: 1" = 40'

RECORDED PLAT BOOK 10 FOLIO 56
ON 11/24/1965 AMONG THE LAND RECORDS OF
HOWARD COUNTY, MD.

ENGINEERS CERTIFICATE

I, hereby certify that the plan shown hereon is correct, that it is a resubdivision of part of Block 11, of North Laurel Subdivision, recorded in 1893, among the Land Records of Howard County in Liber No. J.H.O. 60, Folio 642, being the same land now owned by Southern Properties, Inc. I further certify that the requirements of Section 72A to 72D of the Annotated Code of Maryland (Title Clerk of Court - Subtitle Clerk of Circuit Court) as far as they relate to the marking of this plat and setting of monuments have been complied with. Toti

Marius C. Jeppesen
Marius C. Jeppesen - Registered Surveyor
TOWNSEND & JEPPESEN, ENGINEERS, 90

Pursuant to a Resolution adopted by the Planning Commission of Howard County on 1/16/63 relaxing the minimum requirements of the Subdivision Regulations, the above conveyance is authorized.	
11-27-65 Date	Wilmer M. Sanner, Chairman
PLAT APPROVED BY	
11-28-65 Date	Wilmer M. Sanner, Chairman of Planning Commission.
Approved for Public Water and Sewer.	
11-24-65 Date	Thomas G. Harris, Jr., Planning Director.
Approved for Public Water and Sewer.	
11-23-65 Date	William O. Filbert, Chief Engineer of the Metropolitan Comm.
Approved for Public Water and Sewer.	
3-65 Date	Herman O'Neill, County Roads Supervisor.

Approved for Public Water and Sewer.	
11-24-65 Date	Dr. Theodore Shrop, County Health Officer.
Approved for Public Water and Sewer.	
11-23-65 Date	William O. Filbert, Chief Engineer of the Metropolitan Comm.
Approved for Public Water and Sewer.	
3-65 Date	Herman O'Neill, County Roads Supervisor.