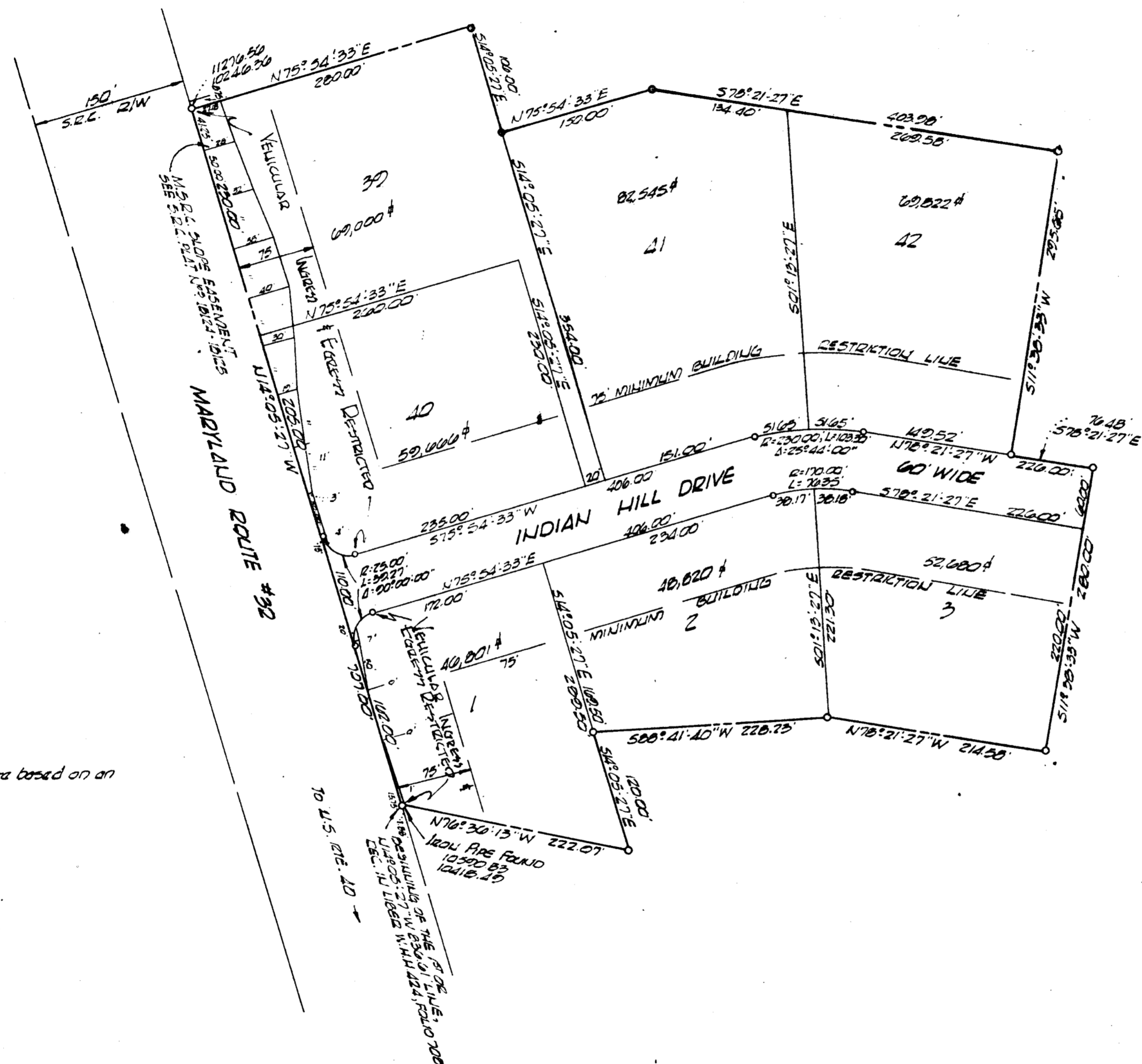


20-20-10



NOTE:

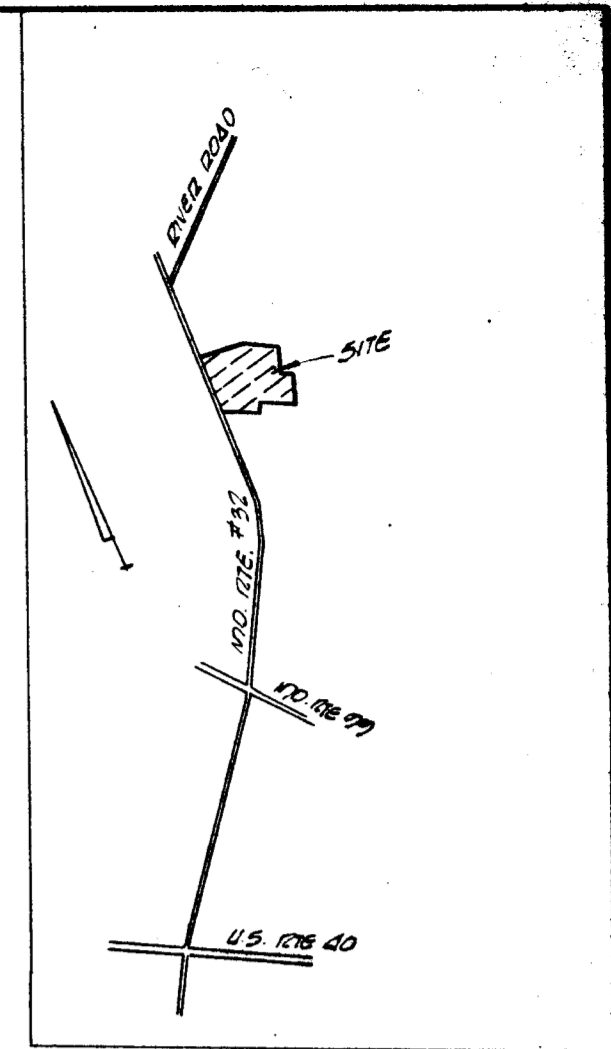
Coordinates shown hereon are based on an assumed meridian.

AREA:

AREA IN LOTS = 2.057 AC.  
AREA IN ROADS = 1.035 AC.

TOTAL AREA IN SEC. #1 = 10.092 AC.

119



VICINITY MAP  
SCALE: 1"=2000'

I, Robert E. Kanada, President of Country Homes, LTD, a body corporate of the State of Maryland, owner of the property shown and described hereon adopt this plan of subdivision and reserve the fee simple title to the beds of the streets and/or roads shown hereon, and in consideration of the approval of this plat by the planning commission of Howard County, I, or assigns do hereby give and grant unto the Board of County Commissioners of Howard County the right and option to acquire for the consideration of one dollar the fee simple title of the beds of the streets and/or roads shown hereon, within the period of five years from the date of the recording of this plat among the Land Records of Howard County.

Witness my hand and seal this 9th day of SEPT. 1965

Robert E. Kanada  
Robert E. Kanada, Pres. Country Homes, LTD.

I hereby certify that this plat represents a subdivision of land made by me, that all markers shown hereon actually exist, that their location, size, and material are correctly shown in accordance with sections 600A to 602 of Article 17 of the Annotated Code of Maryland 1957, as amended 1959.

Gerald J. Collier 9/7/65  
Gerald J. Collier, Registered Land Surveyor #2905 Date

**APPROVED**  
PLANNING COMMISSION  
OF HOWARD COUNTY

RECORDED PLAT BOOK 10 FOLIO 52  
ON 9-24 1965 AMONG THE LAND RECORDS OF  
HOWARD COUNTY, MD.

FINAL SUBDIVISION PLAT  
SECTION 1

EXTENSION OF INDIAN HILL

3RD ELECTION DISTRICT  
SCALE: 1"=100'

HOWARD COUNTY, MD.  
SEPTEMBER, 1965

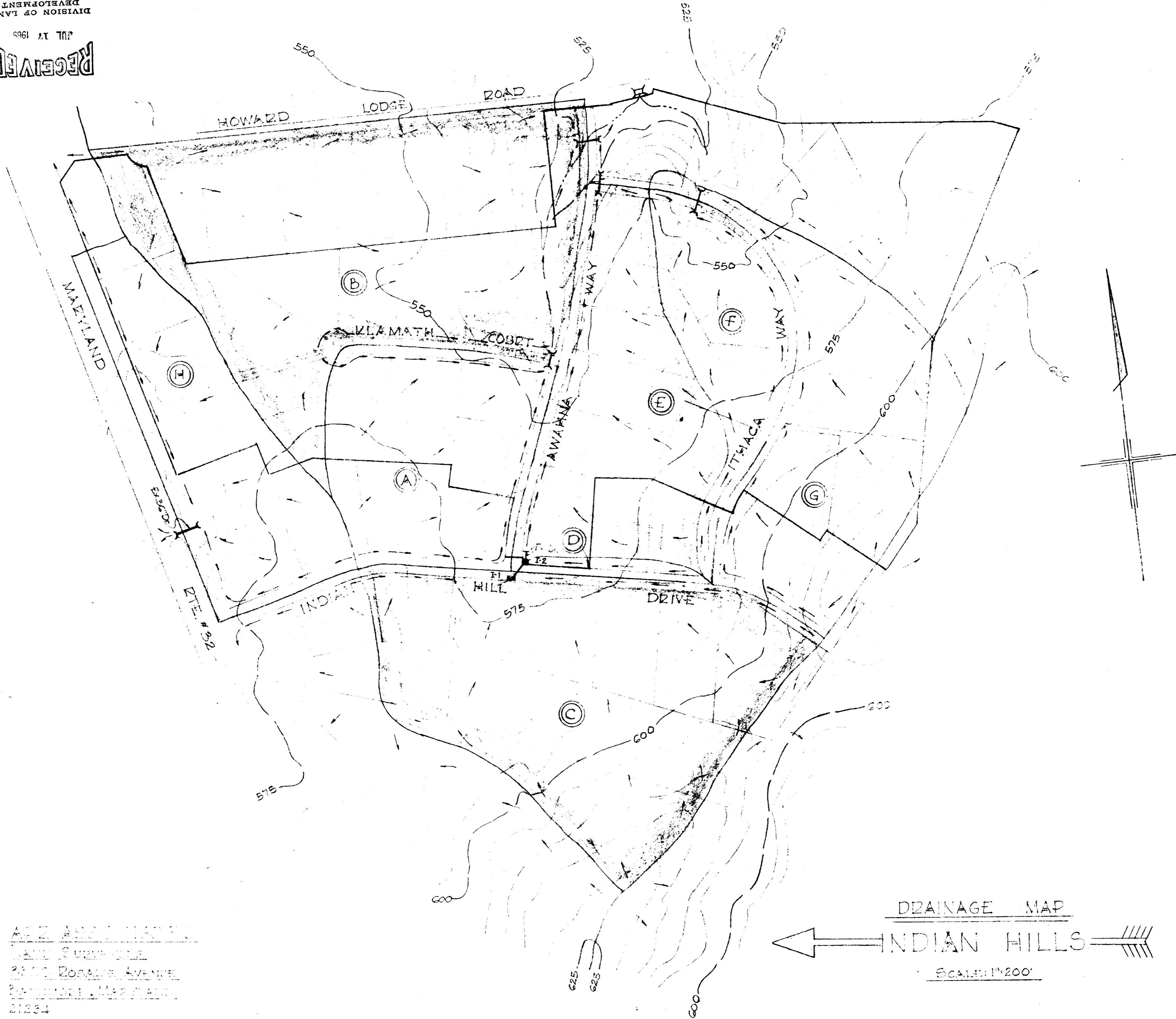
Wilmer M. Lawrence 9-24-65 Herman S. O'Neill 9-23-65  
CHAIRMAN, PLANNING COMMISSION DATE COUNTY ROADS SUPERINTENDENT DATE

Thomas J. Harris 9-24-65 W O Lubet 9-24-65 Theodore J. Sept 9-23-1965  
DIRECTOR, PLANNING COMMISSION DATE CHIEF ENGINEER, METROPOLITAN COMM. DATE COUNTY HEALTH OFFICER DATE

DIVISION OF LAND  
DEVELOPMENT  
OF HOWARD COUNTY

JUL 17 1966

RECEIVED



APR ASSOCIATES  
LAND SURVEYORS  
2410 ROSALIE AVENUE  
BETHESDA, MARYLAND  
20814

DRAINAGE MAP

INDIAN HILLS

SCALE: 1"=200'