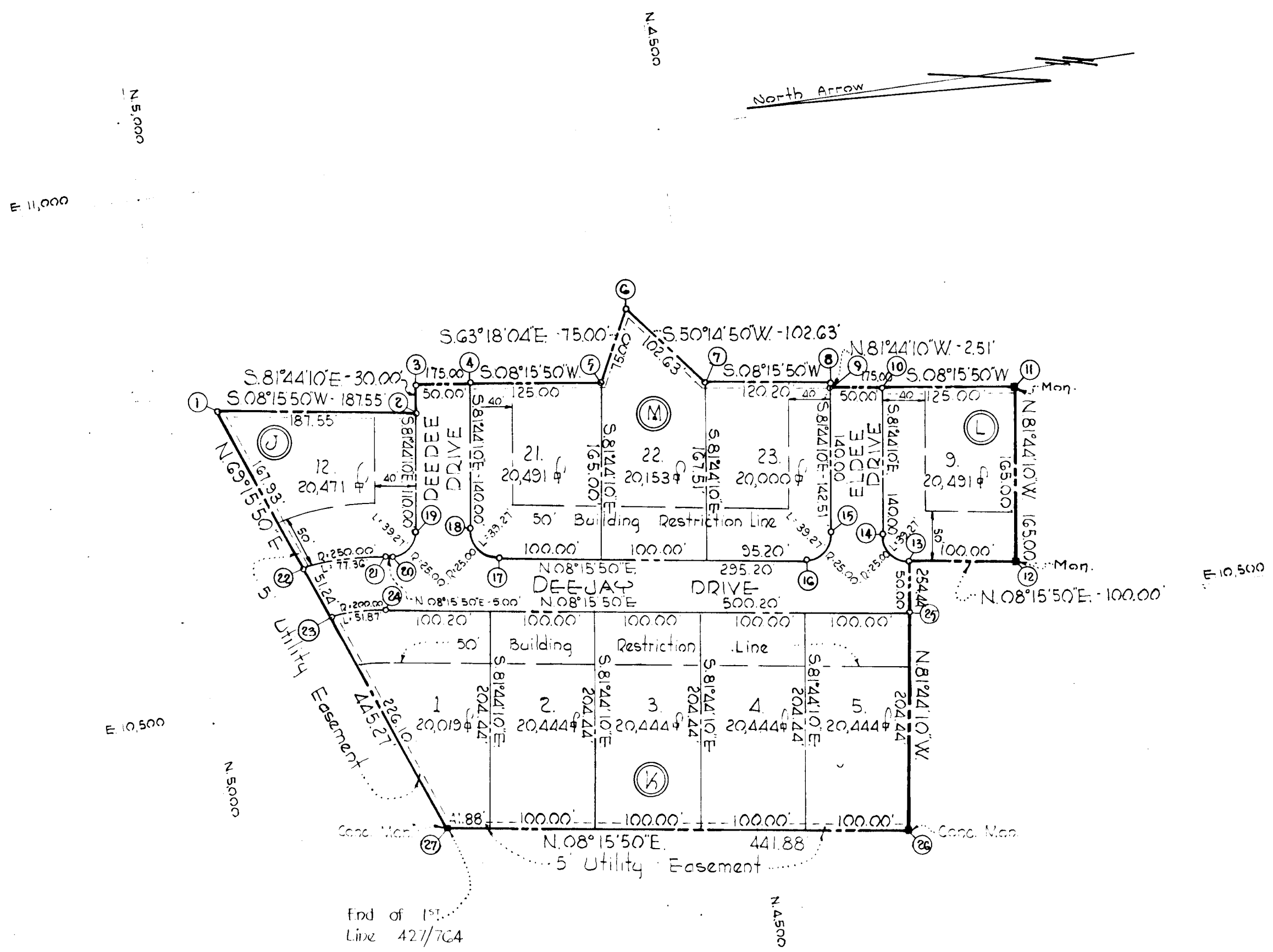


TABLE OF CURVE DATA						
N ^o TO N ^o	RADIUS	LENGTH	TANGENT	DELTA	CHORD BEARING	DISTANCE
13-14	25.00'	39.27'	25.00'	90° 00' 00"	N 53 15 50 E	35.36'
15-16	25.00'	39.27'	25.00'	90° 00' 00"	N 36 44 10 W	35.36'
17-18	25.00'	39.27'	25.00'	90° 00' 00"	N 53 15 50 E	35.36'
19-20	25.00'	39.27'	25.00'	90° 00' 00"	N 36 44 10 W	35.36'
21-22	250.00'	77.36'	38.99'	17° 43' 50"	N 00 36 05 W	70.06'
23-24	200.00'	51.87'	26.08'	14° 51' 38"	N 01 10 01 E	51.73'

TABLE OF COORDINATES					
N ^o	NORTH	EAST	N ^o	NORTH	EAST
1	4950.63	10788.95	15	4389.75	10596.33
2	4765.03	10761.99	16	4418.08	10575.18
3	4760.72	10791.68	17	4710.22	10617.61
4	4711.24	10784.49	18	4731.36	10645.95
5	4587.54	10766.53	19	4780.84	10653.13
6	4553.84	10833.53	20	4809.18	10631.99
7	4488.21	10754.63	21	4814.12	10632.70
8	4369.26	10737.35	22	4891.17	10631.90
9	4369.62	10734.87	23	4873.03	10583.97
10	4320.14	10727.69	24	4821.31	10583.23
11	4196.44	10709.72	25	4326.30	10511.33
12	4220.15	10546.43	26	4355.69	10309.01
13	4319.12	10560.81	27	4792.98	10372.52
14	4340.27	10589.14			

THE ORIGIN OF THE COORDINATES SHOWN HEREON IS ASSUMED

TOTAL AREA SHOWN 5.709 ACRES ±



RECORDED PLAT BOOK 10 FOLIO 13
ON JAN 20 1965 AMONG THE LAND RECORDS OF
HOWARD COUNTY, M.D.

SECTION FIVE "GWYNN ACRES"

SECOND ELECTION DISTRICT - HOWARD COUNTY, MD.
October 15, 1964
Scale: 1"=100'

OWNER & DEVELOPER
THE DEVELOPMENT & INVESTMENT CORP. OF MD.
6405 FREDERICK ROAD
BALTIMORE 28, MARYLAND

APPROVED HOWARD COUNTY PLANNING COMM. <i>Walter M. J. ...</i> 1-18-65 Chairman <i>Thomas J. Harriopp</i> 1-7-65 Director	OWNER'S CERTIFICATE We, THE DEVELOPMENT AND INVESTMENT CORP. OF MARYLAND, owner of the property shown and described hereon, do adopt this plan of subdivision and reserve the fee simple title to the beds of the streets and/or roads shown hereon and in consideration of the approval of this plat by the Planning Commission of Howard County, we for ourselves, our heirs assigns do hereby give and grant unto the Board of County Commissioners the right and option to acquire for the consideration of One Dollar the fee simple title to the beds of streets and/or roads shown hereon within the period of five years from the date of the recording of this plat among the Land Records of Howard County, Maryland Witness our hands and seals this 22 day of Dec., 1964 <i>Edward ...</i>	ENGINEER'S CERTIFICATE I, Curt A.H. Jeschke hereby certify that the plan shown hereon is correct, that it is a subdivision of a part of the land which by deed dated Nov 14 and recorded among the Land Records of Howard County, Maryland in Liber 427 at Folio 764 was granted and conveyed to Frank Gwynn, Jr. & Wife to the Development & Investment Corp. of Md. and that stakes or concrete monuments marked thereon are in place as shown. I further certify that the requirements of Section 12B Article 17 of the Annotated Code of Maryland (as amended) as far as they relate to the making of this plat have been complied with. <i>Curt A.H. Jeschke</i> 22/12/64 REG. NO. 2351	PURDUM & JESCHKE ENGINEERS 24 PARK AVENUE ELLICOTT CITY, MD	
APPROVED HOWARD COUNTY HIGHWAY DEPT. <i>Herman S. O'Neil</i> 1-7-65 Roads Engineer				
APPROVED HOWARD CO. METROPOLITAN COMM. <i>W.D. ...</i> 1-8-65 Chief Engineer				