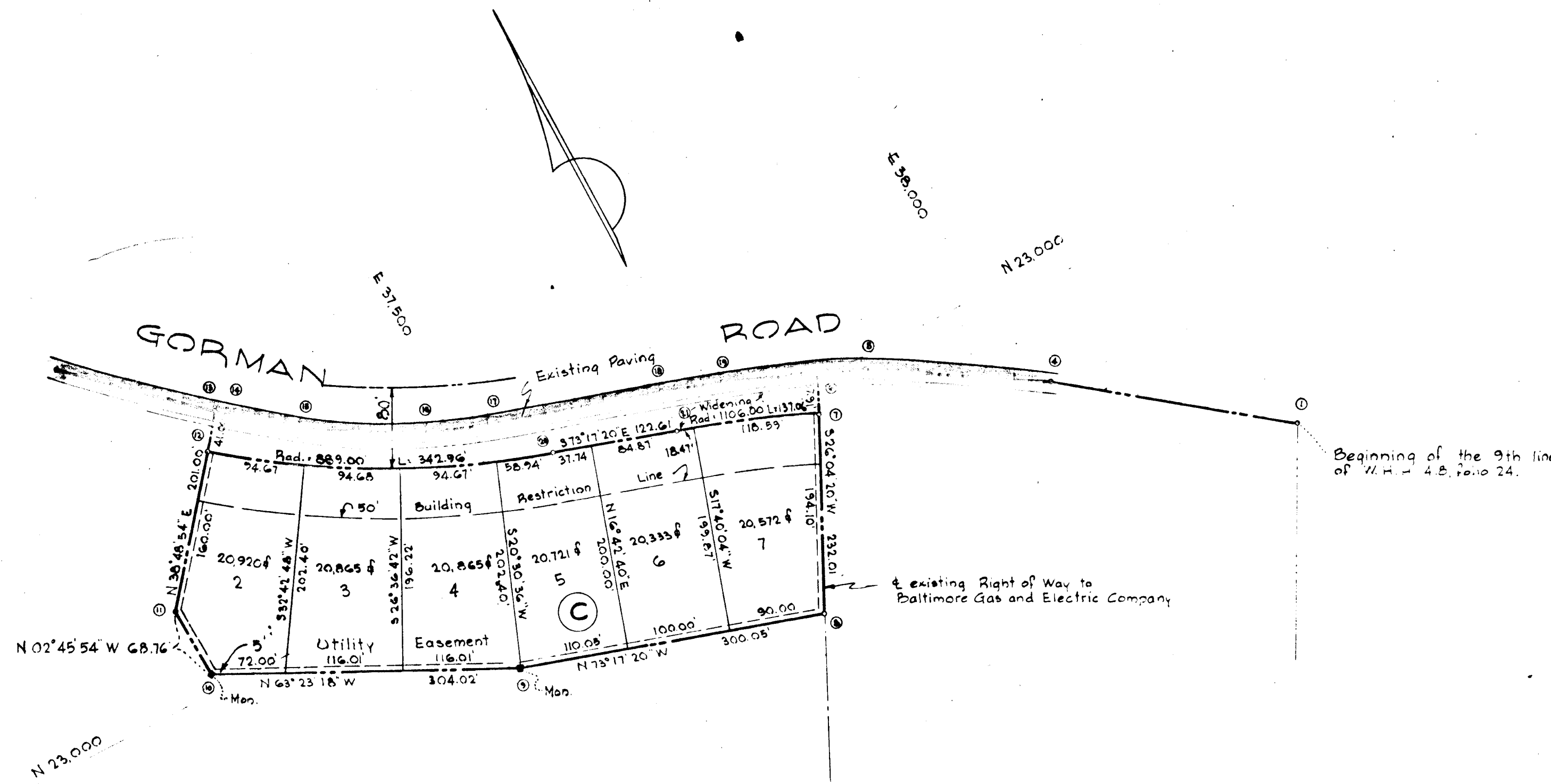


NO. IN	RADIUS	LENGTH	TANGENT	DELTA	CHORD BEARING	CHORD DIST.
12-20	889.00	342.96	173.64	22°06'14"	S62°44'35"E	340.84
21-7	1106.00	137.06	68.61	07°06'00"	S67°44'20"E	136.97

TABLE OF COORDINATES					
NO.	NORTH	EAST	NO.	NORTH	EAST
1	22747.62	38239.27	11	23087.45	37178.60
2			12	23212.12	37278.89
3			13	23244.07	37304.59
4	22892.38	38044.98	14	23232.91	37316.65
5	22984.79	37891.55	15	23191.29	37369.52
6	23004.72	37843.08	16	23127.31	37479.09
7	22970.66	37826.42	17	23105.86	37544.69
8	22796.31	37741.11	18	23058.73	37701.68
9	22882.59	37453.73	19	23038.61	37760.61
10	23018.77	37181.92	20	23053.35	37580.35
			21	23018.09	37697.95



RECORDED PLAT BOOK 9 FOLIO 82
 ON May 25 1964 AMONG THE LAND RECORDS OF
 HOWARD COUNTY, MD.

FROM	BEARING	DISTANCE
13-14	S 47° 14' 29" E	16.43
14-15	S 51° 47' 15" E	67.28
15-16	S 59° 43' 00" E	126.89
16-17	S 71° 53' 56" E	69.01
17-18	S 73° 17' 20" E	163.92
18-19	S 71° 08' 57" E	62.27
19-6	S 67° 39' 19" E	89.15
6-5	S 67° 39' 19" E	52.40
5-4	S 58° 56' 20" E	179.12
4-1	S 53° 18' 40" E	242.30

SECTION ONE HAMMOND VILLAGE

6th ELECTION DISTRICT - HOWARD COUNTY, MARYLAND
 MAY 18, 1964
 SCALE: 1"=100'

OWNER AND DEVELOPER
 THE ALADDIN CONSTRUCTION CORP
 R.F.D. #1 MONTGOMERY RD. ELLICOTT CITY, MD.

NOTE:
 The origin of the coordinates shown hereon is assumed.

125 TOTAL AREA: 3.378 ACRES ±

PB 9 F82

APPROVED: HOWARD COUNTY PLANNING COMMISSION <i>William H. Lanner</i> 5-20-64 CHAIRMAN <i>Thomas L. Harris</i> 5-22-64 DIRECTOR APPROVED: HOWARD COUNTY HIGHWAYS DEPARTMENT <i>Thomas S. O'Neill</i> 5-22-64 ROADS ENGINEER APPROVED: HOWARD COUNTY METROPOLITAN COMMISSION <i>Edward R. Peyton</i> 5-22-64 CHIEF ENGINEER	OWNER'S CERTIFICATE We, ALADDIN CONSTRUCTION CORP, owners of the property shown and described hereon, adopt this plan of subdivision and reserve the fee simple title to the beds of the streets and/or roads shown hereon and in consideration of the plat by the Planning Commission of Howard County, we for ourselves, our heirs or assigns, do hereby give and grant unto the Board of County Commissioners the right and option to acquire for the consideration of One Dollar, the fee simple title to the beds of the streets and/or roads shown hereon within the period of five (5) years from the date of the recording of this plat among the Land Records of Howard County, Maryland. Witness our hands and seals this 18 th day of May, 1964. <i>May 18, 1964</i> The Aladdin Const. Corp. <i>Joseph Martelloni Pres.</i>	ENGINEER'S CERTIFICATE I, Curt A.H. Jeschke, hereby certify that the plan shown hereon is correct, that it is a subdivision of a part of that land which by deed dated April 10, 1964 and recorded among the Land Records of Howard County, Maryland, in Liber W.H.H. 418 at folio 24, was granted and conveyed by Melvin J. Berlan, ETAL, to Aladdin Construction Corporation, and that concrete monuments marked thus "a" are in place as shown. I further certify that the requirements of Section 72 B, Article 17 of the Annotated Code of Maryland (as amended) as far as they relate to the making of this plat have been complied with. <i>May 18, 1964</i> <i>Curt A.H. Jeschke</i> REG. NO. 235	PURDUM & JESCHKE -ENGINEERS- 24 PARK AVENUE ELLICOTT CITY, MARYLAND	
---	--	---	---	--