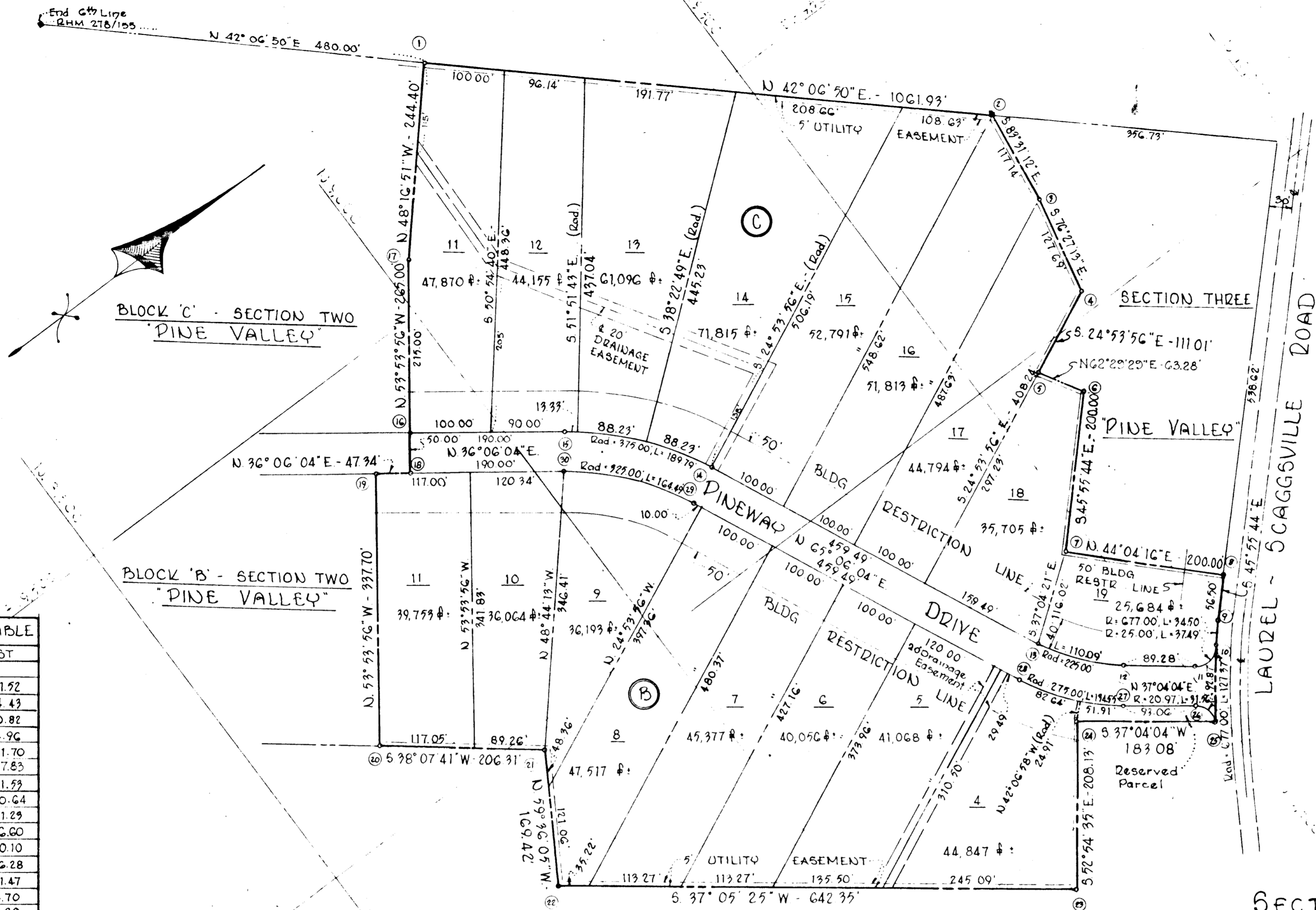


TOTAL AREA SHOWN: 18.775 ACRES ±



COORDINATE TABLE

N ^o	NORTH	EAST
1	9195.97	9261.92
2	9719.09	9734.43
3	9705.87	9850.82
4	9677.96	9974.96
5	9577.27	10021.70
6	9604.50	10077.83
7	9465.99	10221.53
8	9609.09	10360.64
9	9569.79	10401.23
10	9546.42	10426.60
11	9512.53	10430.10
12	9441.29	10376.28
13	9372.82	10291.47
14	9179.37	9874.70
15	9060.17	9729.60
16	8906.65	9617.66
17	9033.33	9443.94
18	8877.19	9658.06
19	8838.94	9630.17
20	8639.96	9903.02
21	8802.25	10090.40

CURVE DATA

N ^o to N ^o	RADIUS	LENGTH	TANGENT	DELTA	CHORD BEING	CH. DIST.
22	8716.52	10176.53	17.25'	02° 55' 10"	S. 47° 20' 59" E.	34.49'
23	9228.91	10569.90	34.90'	23.28'	S. 05° 53' 47" E.	34.07'
24	9374.43	10397.88	92.87'	46.51'	S. 52° 47' 22" E.	46.51'
25	9490.29	10500.52	110.11'	56.17'	N. 51° 04' 59" E.	133.22'
26	9485.40	10472.28	189.79'	96.98'	N. 50° 35' 54" E.	187.79'
27	9411.15	10416.18	20.97'	19.63'	S. 80° 10' 34" W.	28.26'
28	9327.47	10312.52	27.28'	27.50'	N. 51° 04' 59" E.	109.00'
29	9134.02	9895.75	134.58'	68.65'	N. 51° 04' 59" E.	109.00'
30	9030.71	9770.01	164.49'	84.05'	N. 50° 35' 54" E.	162.75'

NOTE:
The origin of the coordinates shown hereon is assumed.

RECORDED PLAT BOOK 7 FOLIO 74
ON 4 15 1964 AMONG THE LAND RECORDS OF
HOWARD COUNTY, MD.

"PINE VALLEY"

6 TH. ELECTION DISTRICT · HOWARD COUNTY · MD.
DECEMBER 18, 1963 SCALE: 1"=100'

OWNED & DEVELOPED
S. & C. CONSTRUCTION CORP.
N^o 111 9TH STREET · LAUREL, MARYLAND

Approved: Howard County Planning Commission
William H. Davis 4-2-64
 Chairman Date
Thomas A. Harris, Jr. 4-2-64
 Director Date
 Approved: Howard County Highways Department
Thomas S. Stull 4-9-64
 Roads Engineer Date
 Approved: Howard County Metropolitan Comm.
Charles W. Byron 4-9-64
 Acting Chief Engineer Date

OWNERS CERTIFICATE:
 We, S. & C. Construction Corporation, owner of the property shown and described hereon, adopt this plan of subdivision and reserve the fee simple title to the beds of the streets and/or roads shown hereon and in consideration of the plat by the Planning Commission of Howard County, we for ourselves, our heirs or assigns do hereby give and grant unto the Board of County Commissioners of Howard County, the right and option to acquire for the consideration of One Dollar, the fee simple title to the beds of the streets and/or roads shown hereon within the period of five years from the date of the recording of this plat among the Land Records of Howard County, Maryland. Witness our hands and seals this 2nd day of November, 1963.

ENGINEERS CERTIFICATE:
 I, Curt H.H. Jeschke, hereby certify that the plan shown hereon is correct, that it, a subdivision of a part of the land which by deed dated Nov 13, 1963 and recorded among the Land Records of Howard County in Liber 409 at Folio 797 was granted and conveyed by the Laurel Investment Company to the S. & C. Construction Corporation, and that concrete monuments marked thus are in place as shown. I, further certify that the requirements of Section 72b, Article 17 of the Annotated Code of Maryland (as amended) as far as they relate to the making of this plat have been complied with.
 OCTOBER 25, 1963 *Curt H.H. Jeschke*
 Eng. No. 7481

PURDUM & JESCHKE
 ENGINEERS
 24 Park Avenue
 Ellicott City, Maryland